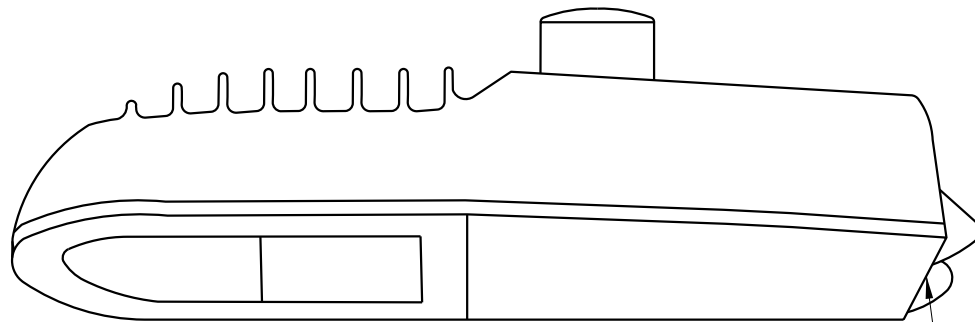



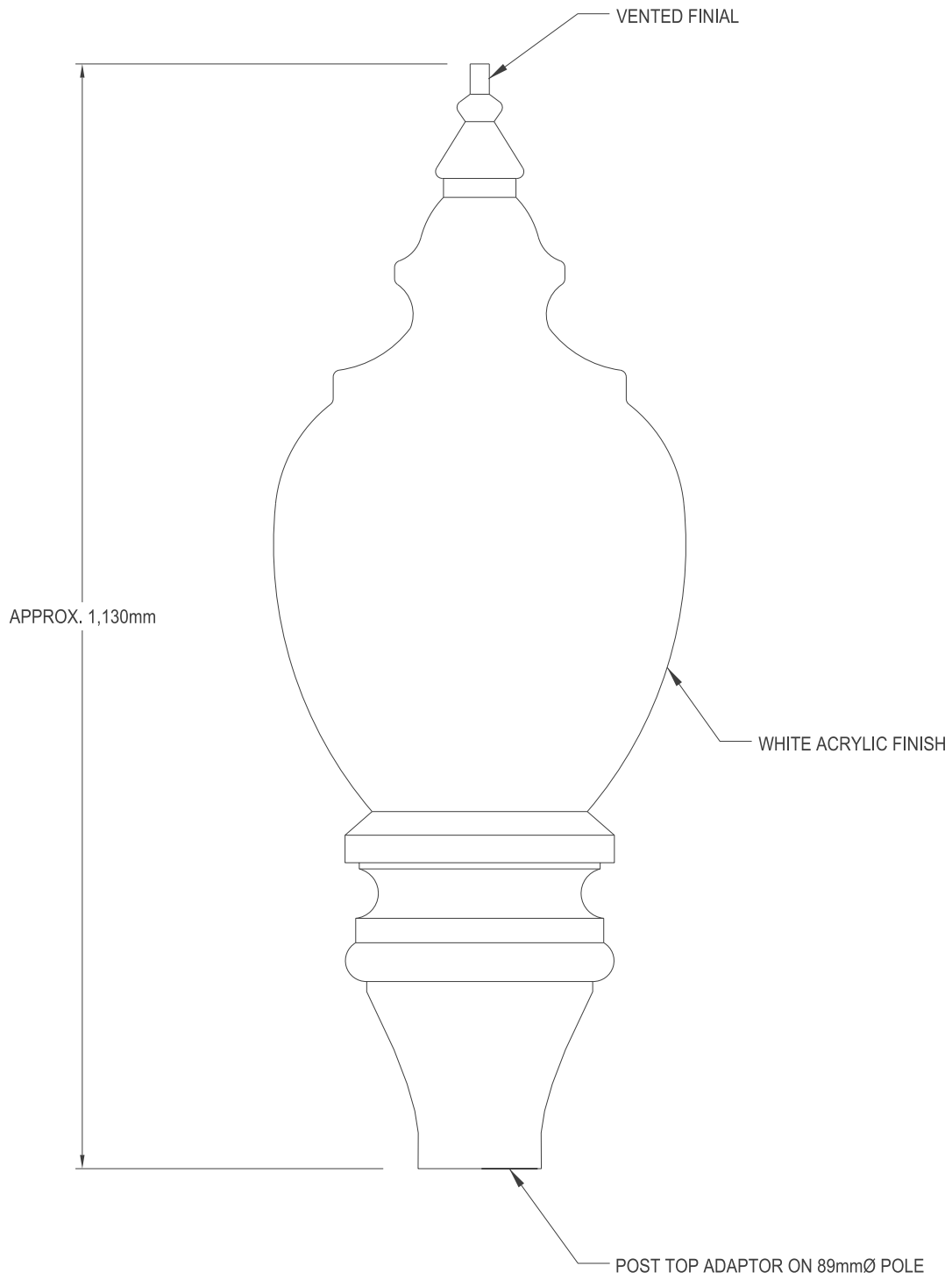
# Street Lighting Material Catalogue



60.3mmØ x 203mm  
TENON

WEIGHT (kg)	EPA(m <sup>2</sup> )
15	0.1

-	--	-	<b>LED COBRAHEAD</b>			
Issue	Revision	Issue Date				
 <b>THE CITY OF CALGARY</b> ROADS			DES: DB	SCALE:	DRAWING No.	SHEET
			DWN: JA (2015-08-07)	NOT TO SCALE	<b>454.0L73.32</b>	<b>1</b>



WEIGHT (kg)	EPA (m <sup>2</sup> )
20.9	0.15

1	REVISED POST TOP ADAPTOR DIAMETER FROM 127 TO 89mm	2015-08-25
Issue	Revision	Issue Date

## KING ACORN LUMINAIRE



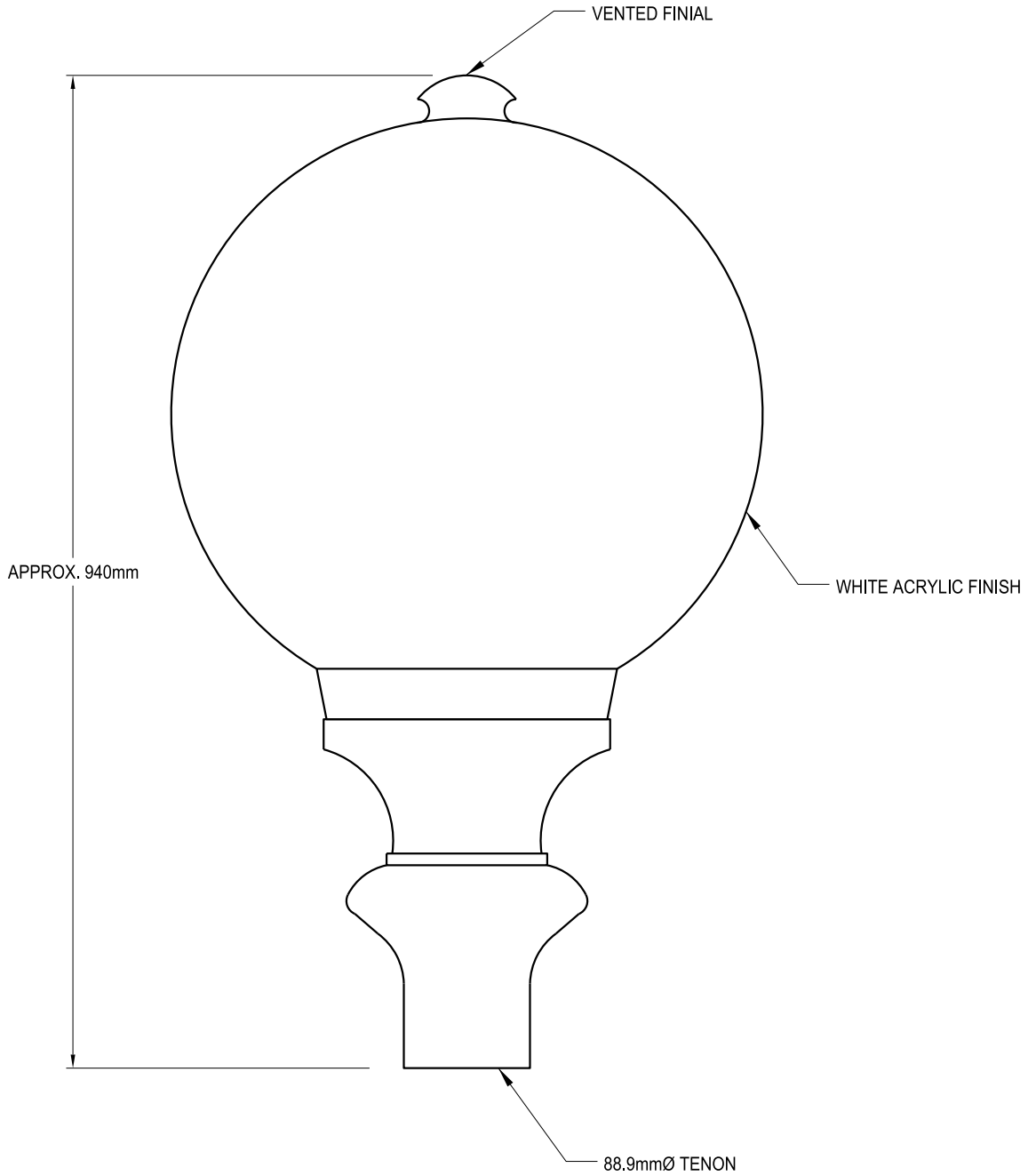
THE CITY OF  
**CALGARY**  
ROADS

DES: DB
DWN: JA (2015-03-26)

SCALE:  
NOT TO SCALE

DRAWING No.  
**454.0L73.031**

SHEET  
**1**



WEIGHT (kg)	EPA (m <sup>2</sup> )
16.3	0.16

Issue	Revision	Issue Date
-	-	-

## KING GLOBE LUMINAIRE



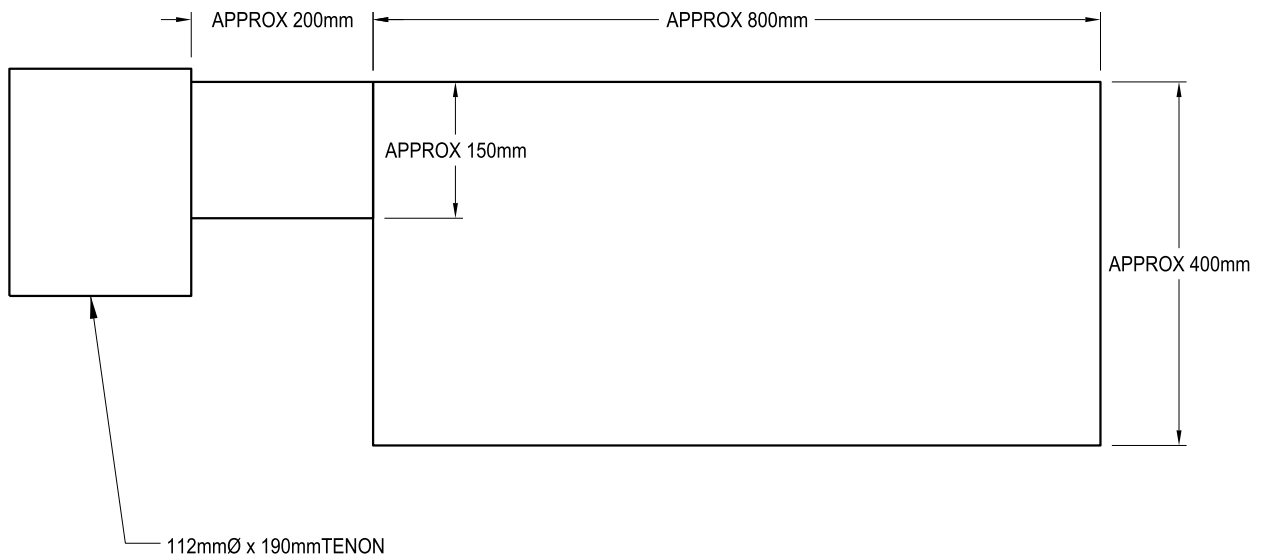
THE CITY OF  
**CALGARY**  
ROADS

DES: DB  
DWN: JA (2014-10-17)

SCALE:  
NOT TO SCALE

DRAWING No.  
**454.0L73.013**

SHEET  
**1**



WEIGHT (kg)	EPA (m <sup>2</sup> )
34	0.177

Issue	Revision	Issue Date
-	-	-

## ROUND PACK LUMINAIRE



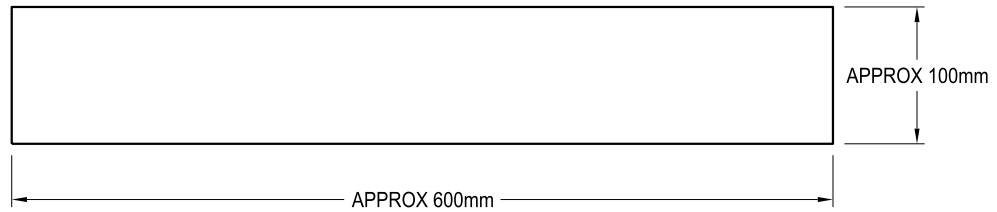
THE CITY OF  
**CALGARY**  
ROADS

DES: DB  
DWN: JA (2014-10-21)

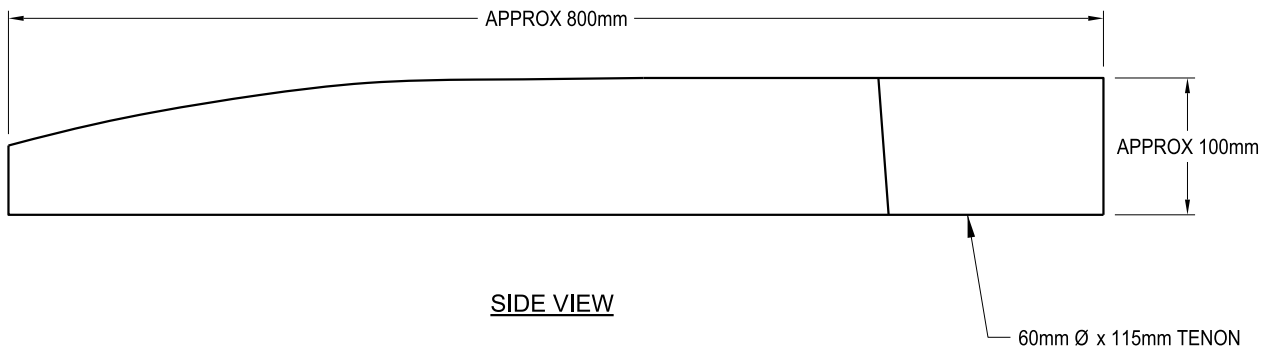
SCALE:  
NOT TO SCALE

DRAWING No.  
**454.0L73.012**

SHEET  
**1**



FRONT VIEW



SIDE VIEW

SHOEBOX SQUARE PACK LUMINAIRE

Issue	Revision	Issue Date
-	-	-



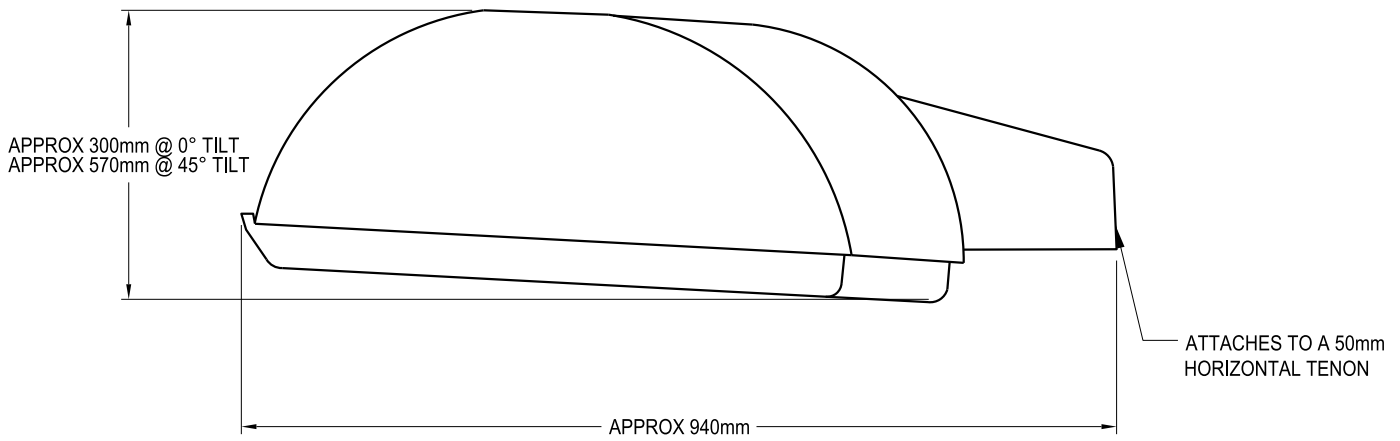
THE CITY OF  
**CALGARY**  
 ROADS

DES: DB  
 DWN: JA (2014-10-21)

SCALE:  
 NOT TO SCALE

DRAWING No.  
**454.0L73.017**

SHEET  
**1**



WEIGHT (kg)	EPA (m <sup>2</sup> )
23	0.19

-	-	--
Issue	Revision	Issue Date

## MONGOOSE STYLE LUMINAIRE



THE CITY OF  
**CALGARY**  
ROADS

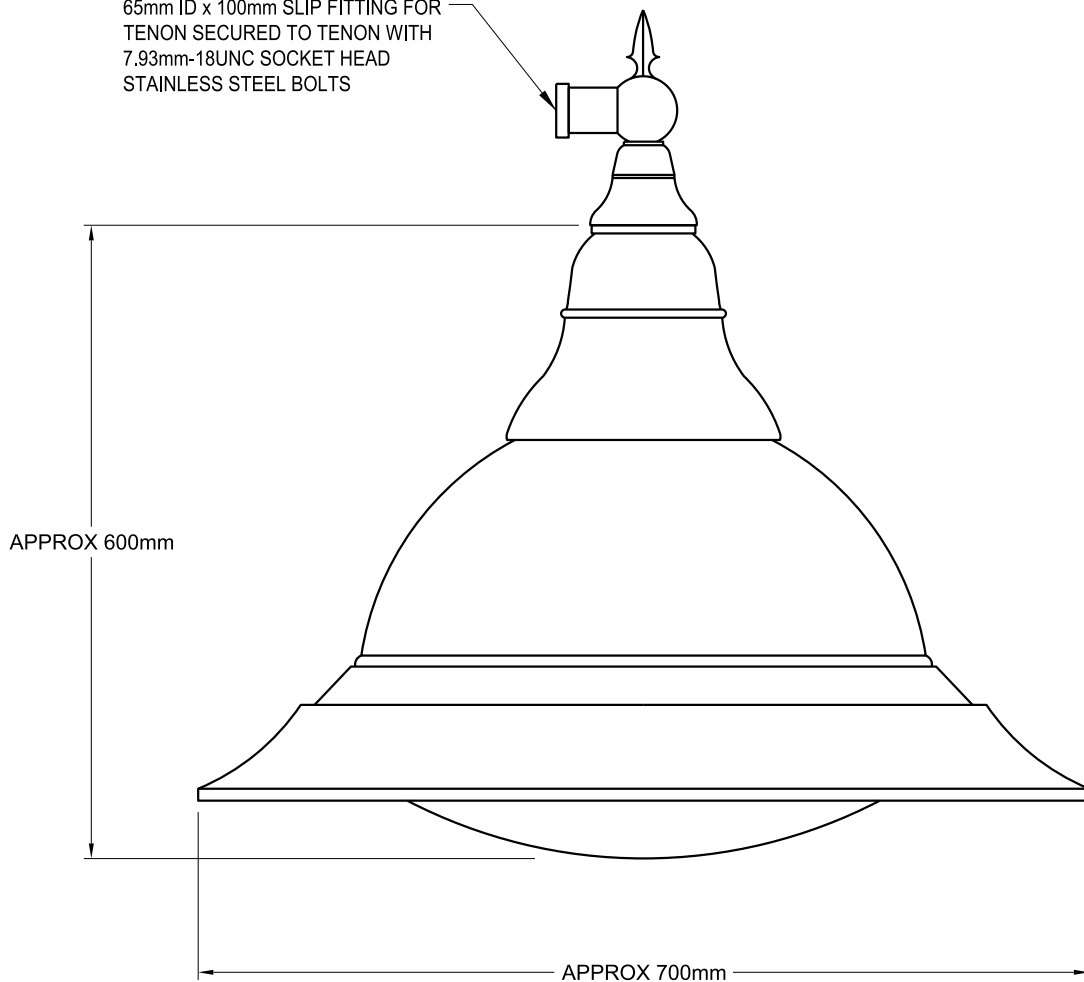
DES: DB  
DWN: JA (2015-02-10)

SCALE:  
NOT TO SCALE

DRAWING No.  
**454.0L73.030**

SHEET  
**1**

65mm ID x 100mm SLIP FITTING FOR  
TENON SECURED TO TENON WITH  
7.93mm-18UNC SOCKET HEAD  
STAINLESS STEEL BOLTS



WEIGHT (kg)	EPA (m <sup>2</sup> )
19	0.18

**NOTE**

1. THIS IS THE PREFERRED DESIGN BUT OTHER ALTERNATIVES MAY BE CONSIDERED.
2. BIDDER TO PROVIDE DIMENSIONS
3. MUST BE COMPATIBLE WITH McKENZIE TOWNE STYLE POLE AND SWEEP SHAFT ARM OR TRADITIONAL STYLE ARM

1	ADDED TABLE AND NOTES-REVISED LUMINAIRE	2014-10-16
Issue	Revision	Issue Date

**McKENZIE STYLE LUMINAIRE**



THE CITY OF  
**CALGARY**  
ROADS

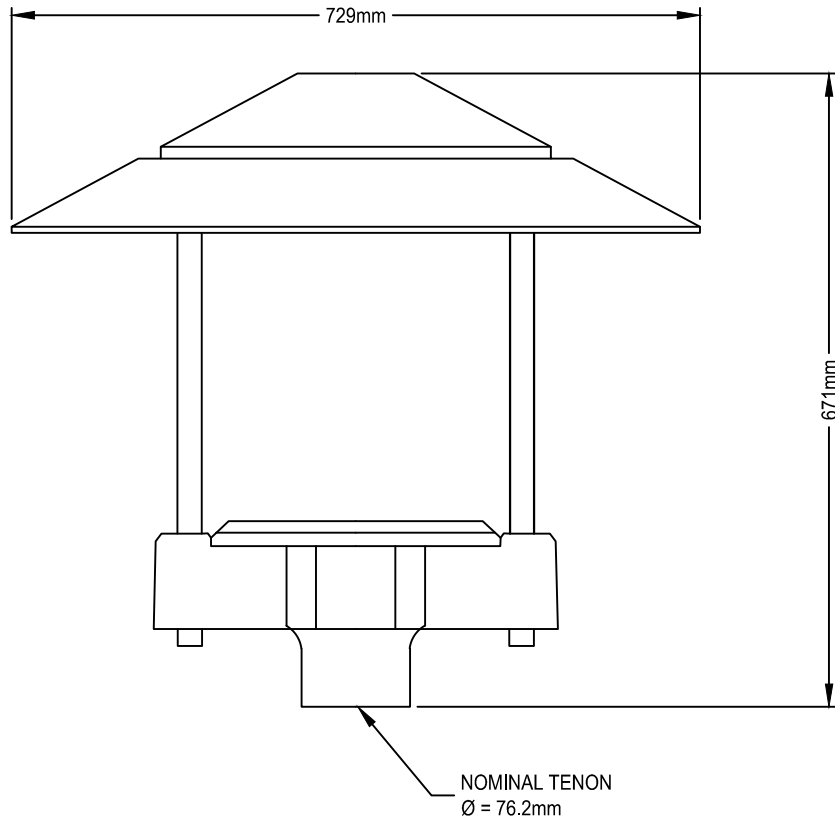
DES: DB  
DWN: JA (2014-09-26)

SCALE:  
NOT TO SCALE

DRAWING No.  
**454.0L73.024**

SHEET  
**1**





WEIGHT (kg)	EPA (m <sup>2</sup> )
<14.51	0.10

FOR INFORMATION  
ONLY

Issue	Revision	Issue Date

### LED WALKWAY LUMINAIRE



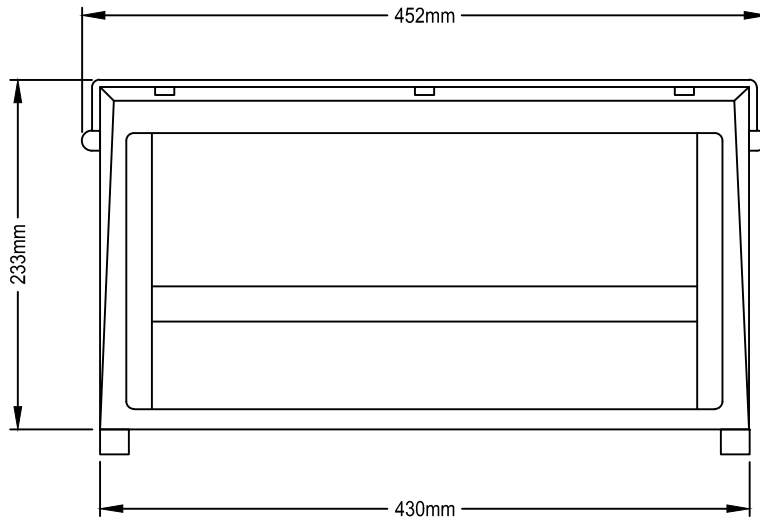
THE CITY OF  
**CALGARY**  
ROADS

DES: DB (2016-03-02)  
DWN: JA (2016-03-02)

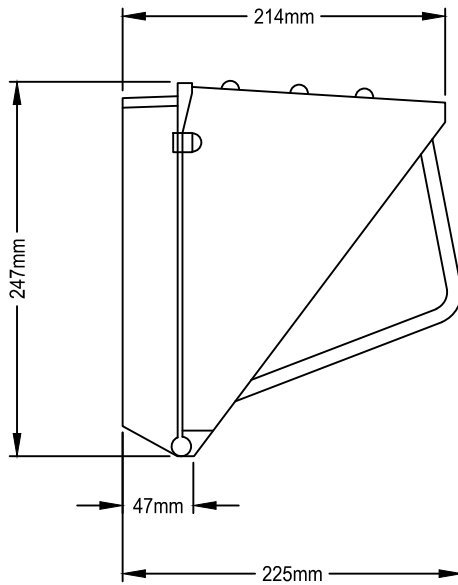
SCALE:  
NOT TO SCALE

DRAWING No.  
-

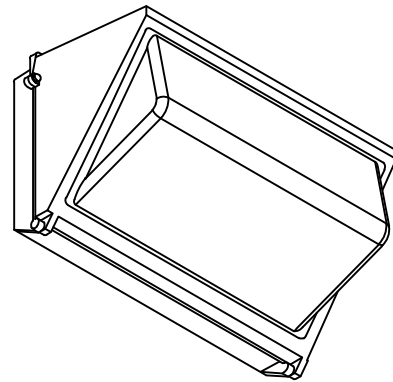
SHEET  
-



FRONT VIEW



SIDE VIEW



ISOMETRIC VIEW

WEIGHT (kg)	EPA (m <sup>2</sup> )
7.2 Kg	-

FOR INFORMATION ONLY

Issue	Revision	Issue Date

LED WALLPACK LUMINAIRE



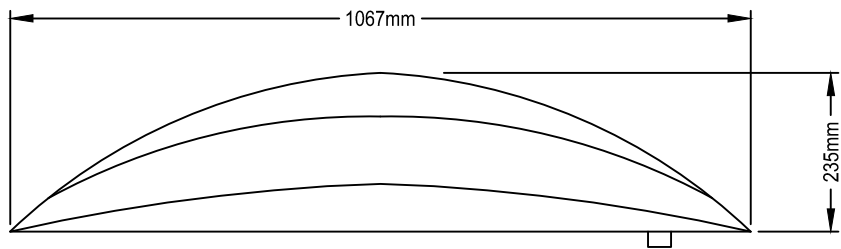
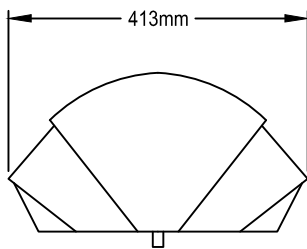
THE CITY OF  
**CALGARY**  
ROADS

DES: DB (2016-02-12)  
DWN: JA (2016-03-30)

SCALE:  
NOT TO SCALE

DRAWING No.  
-

SHEET  
-



WEIGHT (kg)	EPA (m <sup>2</sup> )
25	0.08

FOR INFORMATION  
ONLY

Issue	Revision	Issue Date

LED VOLUNTEER WAY LUMINAIRE  
ROADWAY



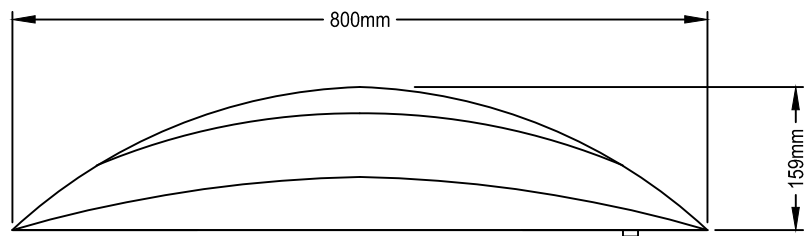
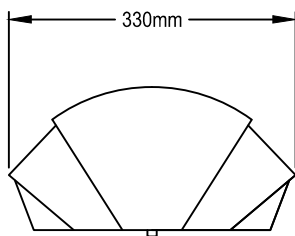
THE CITY OF  
**CALGARY**  
ROADS

DES: DB (2016-03-02)  
DWN: JA (2016-03-02)

SCALE:  
NOT TO SCALE

DRAWING No.  
-

SHEET  
-



WEIGHT (kg)	EPA (m <sup>2</sup> )
13.6	0.04

FOR INFORMATION  
ONLY

Issue	Revision	Issue Date

LED VOLUNTEER WAY LUMINAIRE  
WALKWAY



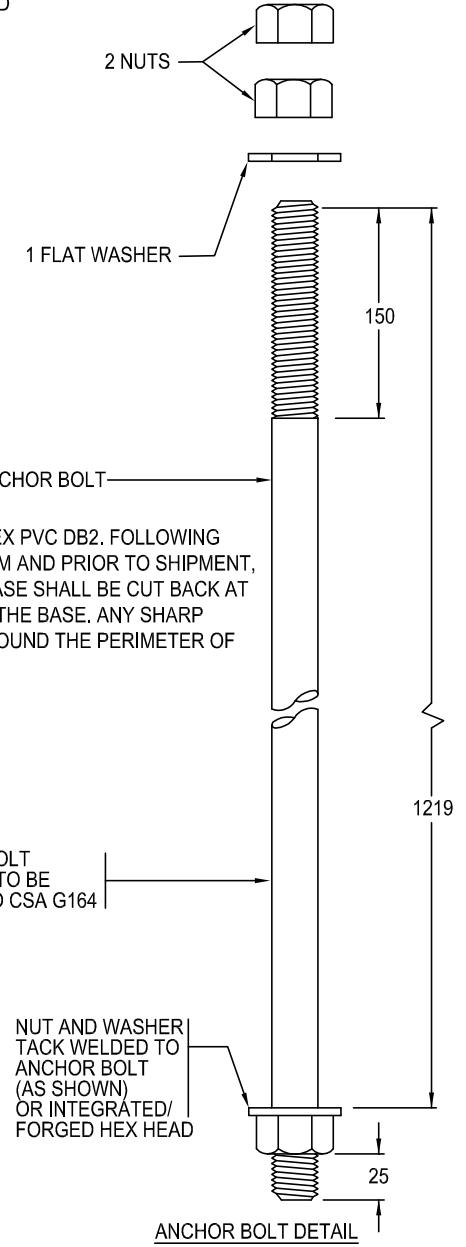
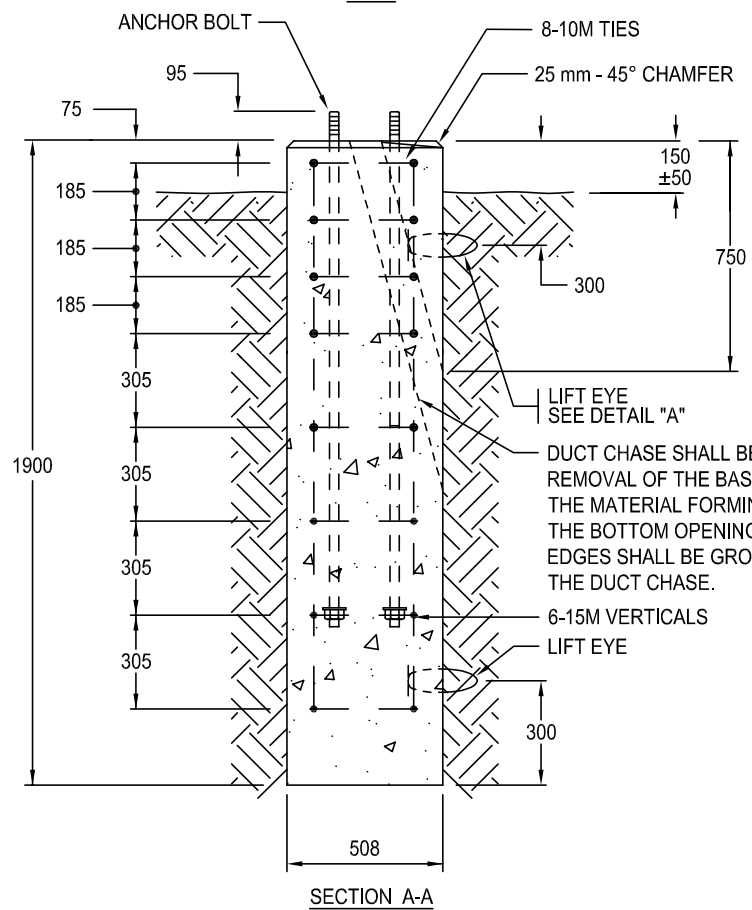
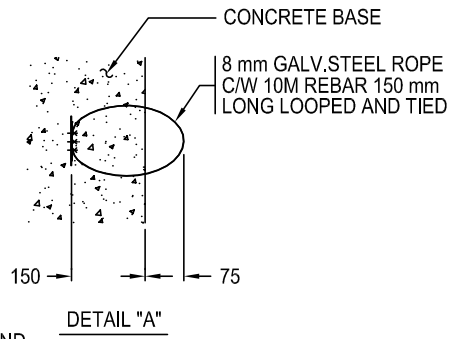
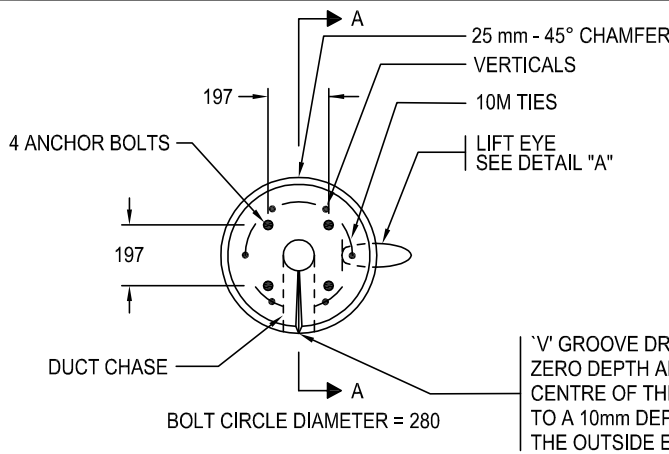
THE CITY OF  
**CALGARY**  
ROADS

DES: DB (2016-03-02)  
DWN: JA (2016-03-02)

SCALE:  
NOT TO SCALE

DRAWING No.  
-

SHEET  
-



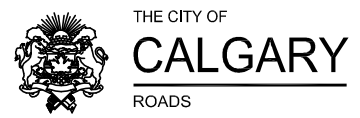
ALL ANCHOR BOLT COMPONENTS TO BE GALVANIZED TO CSA G164

**NOTES**

- DESIGNED TO THE REQUIREMENTS OF THE CAN/CSA/S6-06 (CANADIAN HIGHWAY BRIDGE DESIGN CODE) AND THE CITY OF CALGARY - DESIGN GUIDELINES FOR BRIDGES AND STRUCTURES, FOURTH EDITION 2013 (APPENDIX A1)
- TOP OF CONCRETE BASE TO BE SMOOTH AND LEVEL
- REINFORCING STEEL TO CSA STANDARD G30.12, GRADE 400W. VERTICAL BARS SHALL BE EQUALLY SPACED AROUND PERIMETER OF CAGE.
- TIES SHALL BE TIED OR TACK WELDED IN ACCORDANCE WITH CSA STANDARD W186-M1990
- MINIMUM CONCRETE COVER TO VERTICAL REINFORCING STEEL SHALL BE 70mm UNLESS OTHERWISE NOTED
- CONCRETE SHALL HAVE A MINIMUM 28 DAY COMPRESSIVE STRENGTH OF 35 MPa AND MEET SPECIFICATION REQUIREMENTS
- ANCHOR BOLTS SHALL CONFORM TO ASTM A325 OR AISI 4140 (GRADE 141) AND BE PROVIDED COMPLETE WITH NUTS AND WASHERS AS INDICATED

STOCK NUMBER 139575  
REFERENCE SPECIFICATION 355-3F74-001

DIMENSIONS ARE MILLIMETRES UNLESS OTHERWISE NOTED METRIC

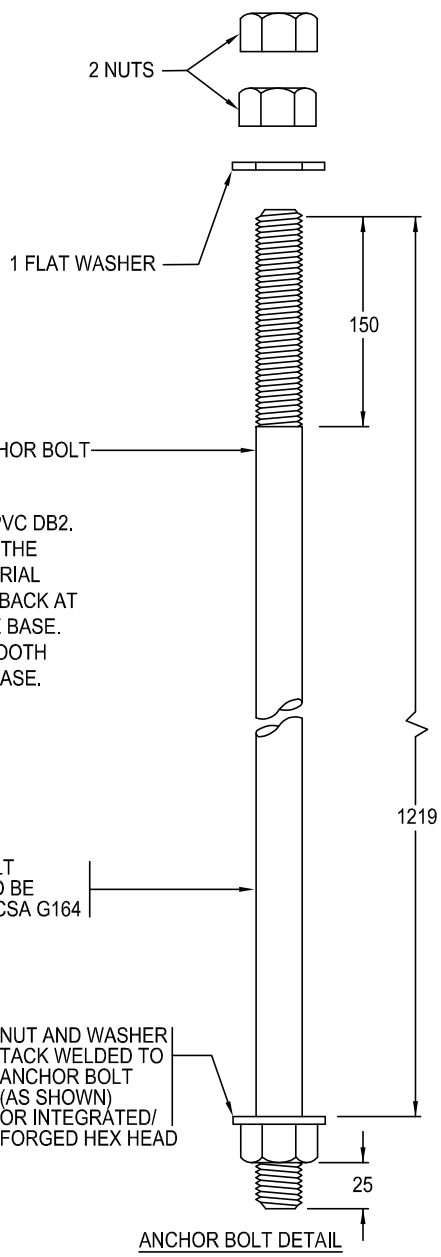
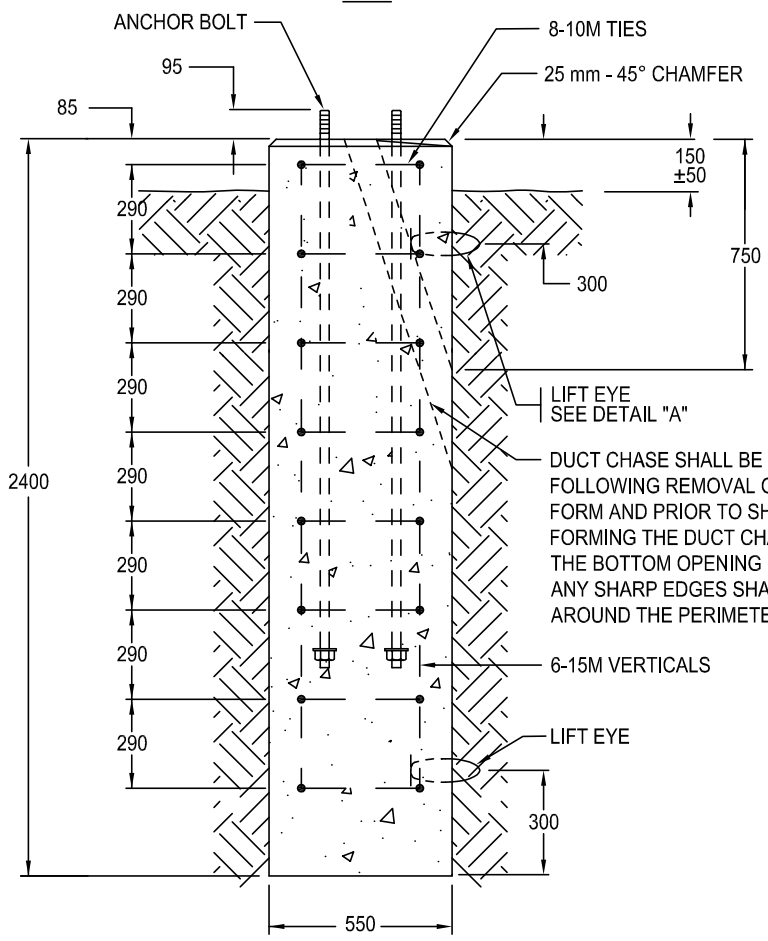
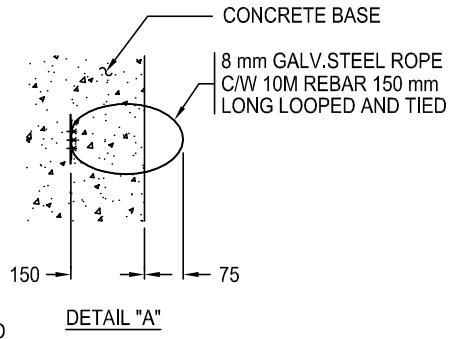
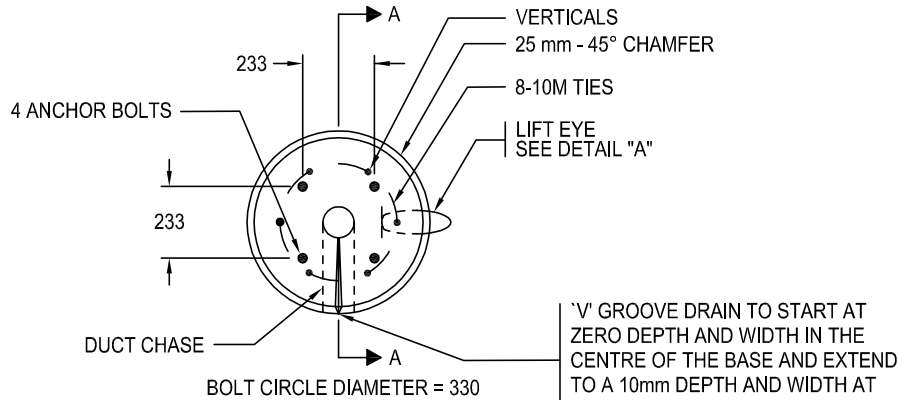


**TYPE 'B' ROUND PRECAST CONCRETE BASE**

4	2013 ISSUE UPDATE (INFORMATION ONLY)	2013-11-22
3	2009 ISSUE UPDATE (INFORMATION ONLY)	2009-10-28
Issue	Revision	Issue Date

Date \_\_\_\_\_ Approved By \_\_\_\_\_  
For General Manager Calgary Roads

DES: ARA	SCALE: NOT TO SCALE	DRAWING No. 454.2001.003	ISSUE 4	SHEET 3
DWN: ARA				



DUCT CHASE SHALL BE 1-100 mm OD IPEX PVC DB2. FOLLOWING REMOVAL OF THE BASE FROM THE FORM AND PRIOR TO SHIPMENT, THE MATERIAL FORMING THE DUCT CHASE SHALL BE CUT BACK AT THE BOTTOM OPENING IN THE SIDE OF THE BASE. ANY SHARP EDGES SHALL BE GROUND SMOOTH AROUND THE PERIMETER OF THE DUCT CHASE.

**NOTES**

- DESIGNED TO THE REQUIREMENTS OF THE CAN/CSA/S6-06 (CANADIAN HIGHWAY BRIDGE DESIGN CODE) AND THE CITY OF CALGARY - DESIGN GUIDELINES FOR BRIDGES AND STRUCTURES, FOURTH EDITION 2013 (APPENDIX A1)
- TOP OF CONCRETE BASE TO BE SMOOTH AND LEVEL
- REINFORCING STEEL TO CSA STANDARD G30.12, GRADE 400W. VERTICAL BARS SHALL BE EQUALLY SPACED AROUND PERIMETER OF CAGE
- TIES SHALL BE TIED OR TACK WELDED IN ACCORDANCE WITH CSA STANDARD W186-M1990
- MINIMUM CONCRETE COVER TO VERTICAL REINFORCING STEEL SHALL BE 70mm UNLESS OTHERWISE NOTED
- CONCRETE SHALL HAVE A MINIMUM 28 DAY COMPRESSIVE STRENGTH OF 35 MPa AND MEET SPECIFICATION REQUIREMENTS
- ANCHOR BOLTS SHALL CONFORM TO ASTM A325 OR AISI 4140 (GRADE 141) AND BE PROVIDED COMPLETE WITH NUTS AND WASHERS AS INDICATED

STOCK NUMBER 139576  
 REFERENCE SPECIFICATION 355-3F74-001

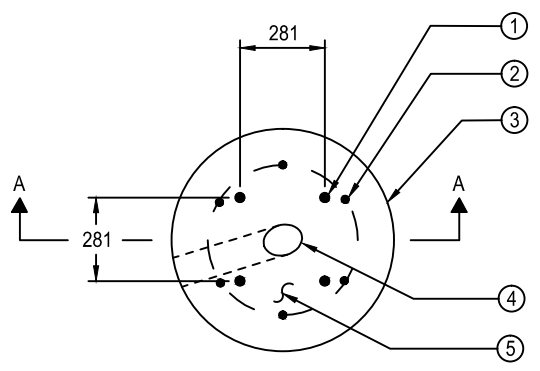
DIMENSIONS ARE MILLIMETRES UNLESS OTHERWISE NOTED



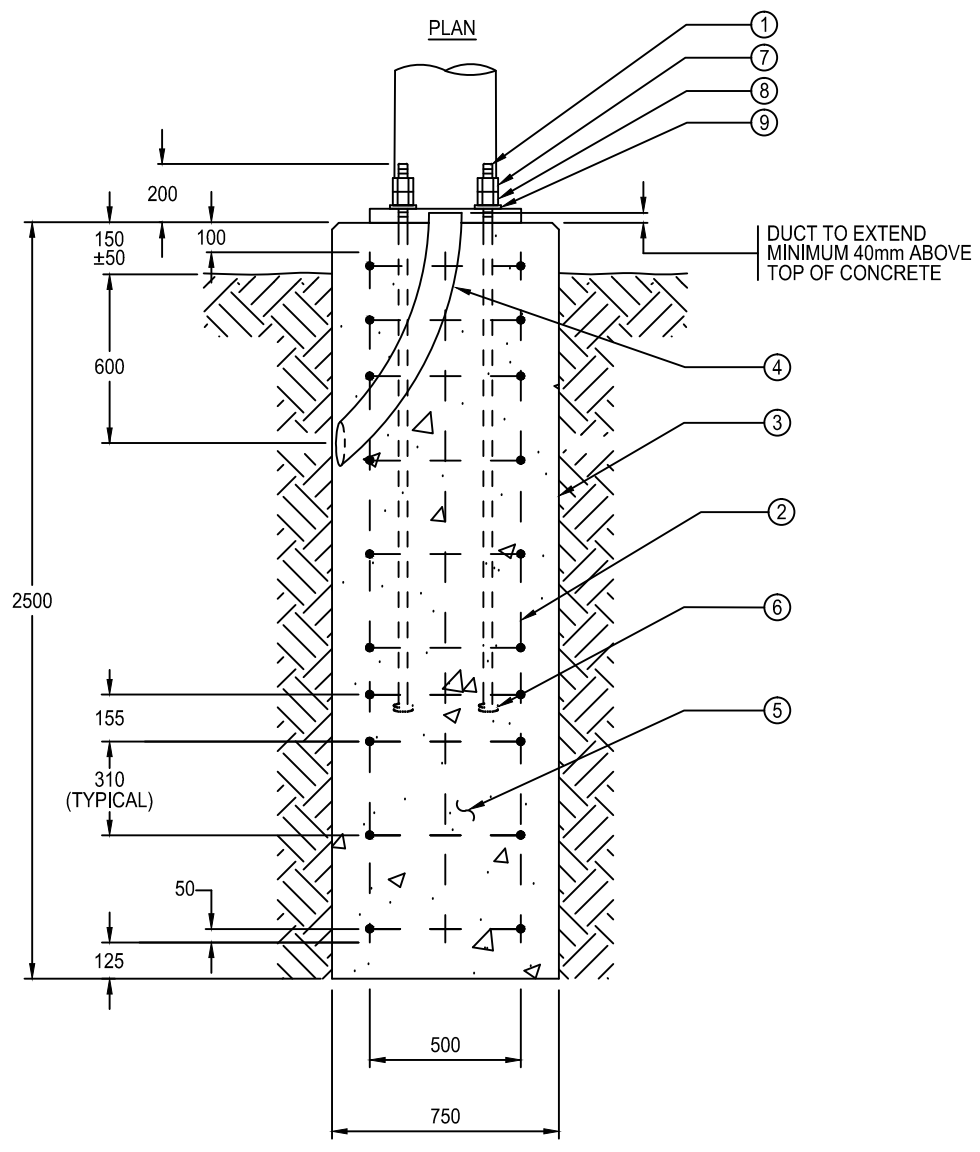
4	2013 ISSUE UPDATE (INFORMATION ONLY)	2013-11-22
3	2009 ISSUE UPDATE (INFORMATION ONLY)	2009-10-28
Issue	Revision	Issue Date

**TYPE 'C' ROUND PRECAST CONCRETE BASE**

Date	Approved By	DES: ARA	SCALE:	DRAWING No.	ISSUE	SHEET
		DWN: ARA	NOT TO SCALE	454.2001.006	4	6
For General Manager Calgary Roads						



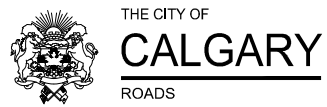
BOLT CIRCLE DIAMETER:  
396mmØ  
BOLT SQUARE DIMENSION:  
281mm



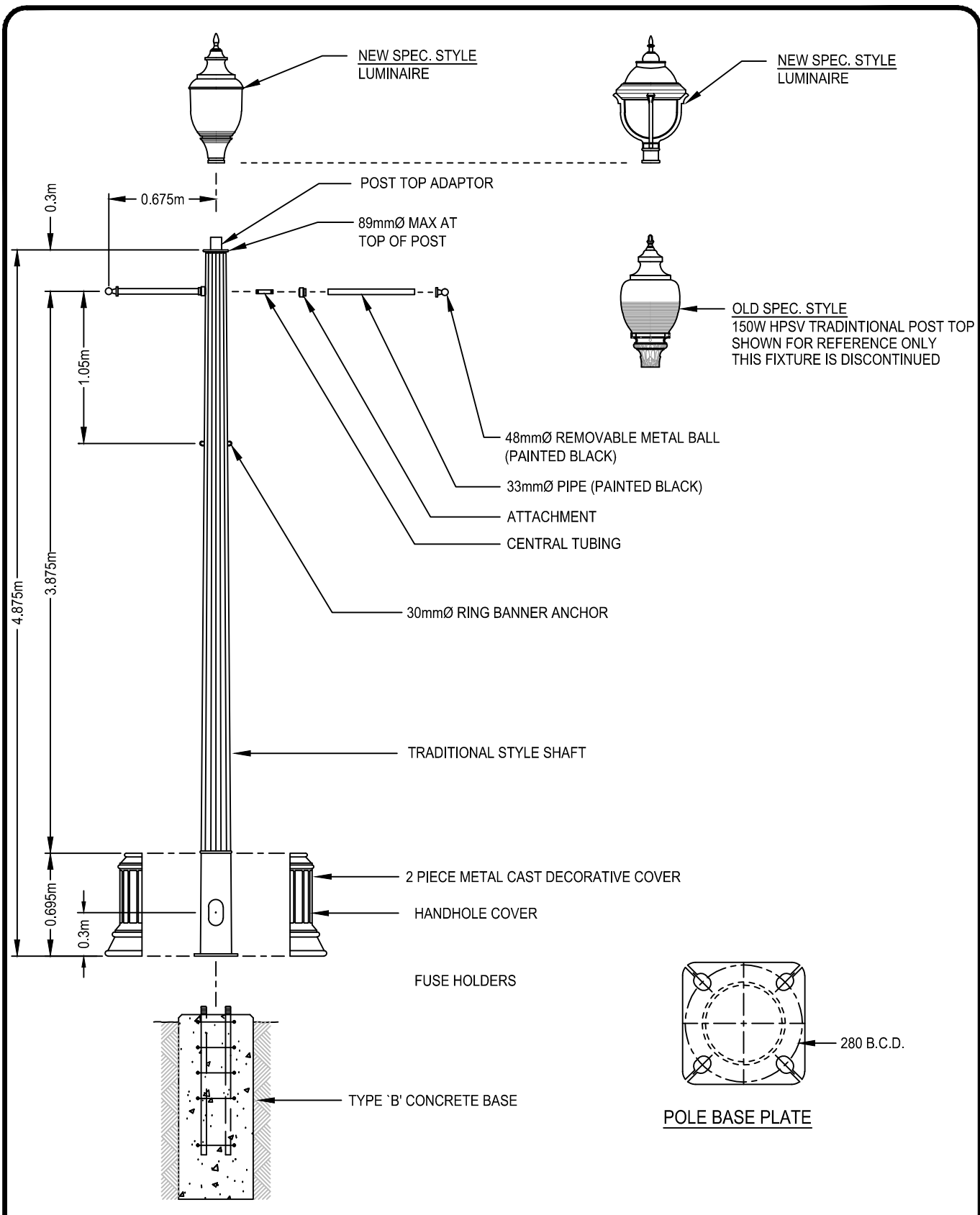
SECTION A-A

3	2015 ISSUE UPDATE (INFORMATION ONLY)	2015-07-14
2	2005 ISSUE UPDATE (INFORMATION ONLY)	2005-06-01
1	2004 ISSUE UPDATE (INFORMATION ONLY)	2004-02-13
Issue	Revision	Issue Date

## TYPE 'D' BASE DETAIL FOR 20 METRE STEEL DAVIT POLE

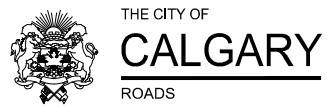


DES: HC (2015-07-14)	SCALE:	DRAWING No.	SHEET
DWN: JA (2015-07-14)	NOT TO SCALE	454.2002.001	-



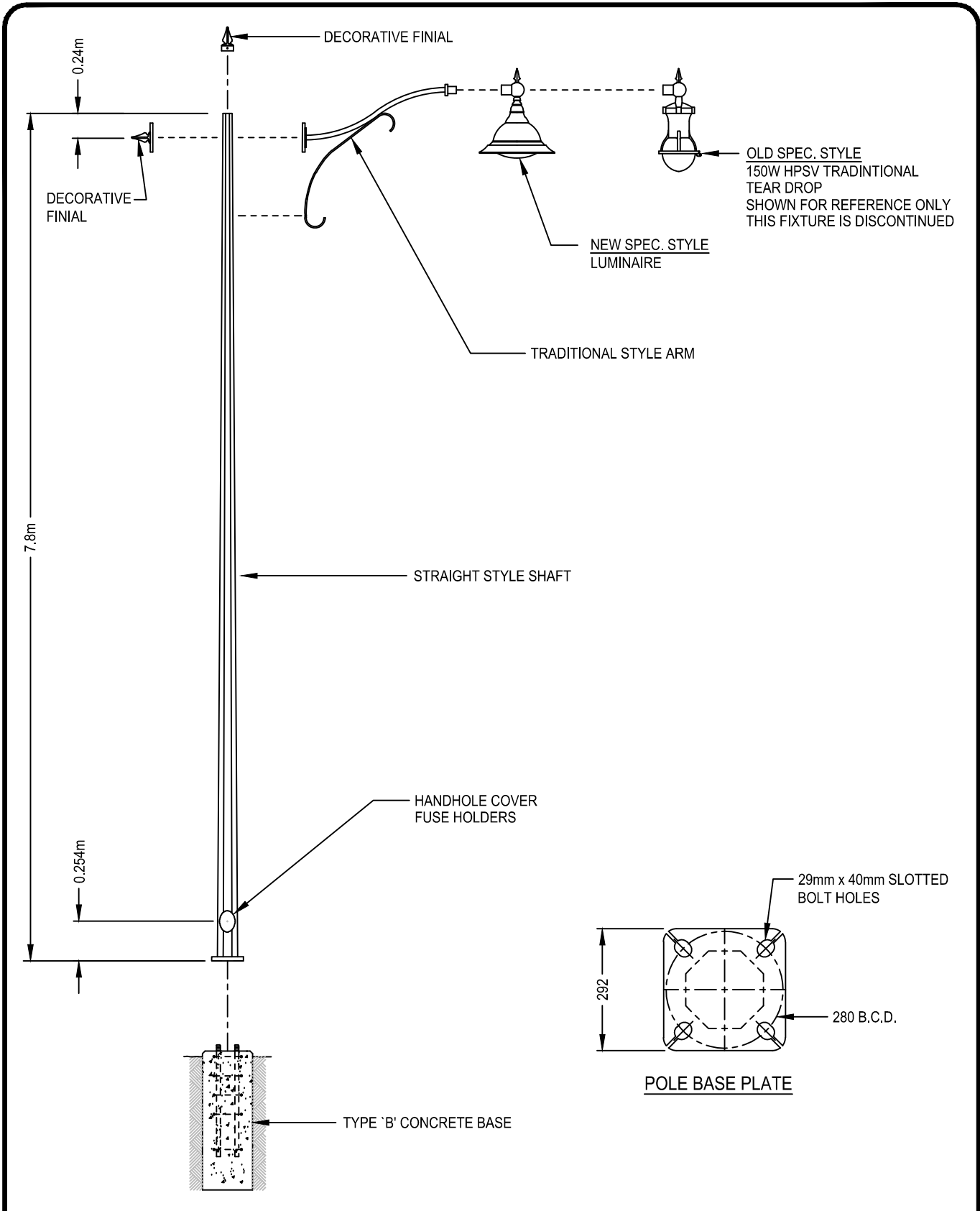
3	2015 ISSUE UPDATE (INFORMATION ONLY)	2015-08-25
2	2005 ISSUE UPDATE (INFORMATION ONLY)	2005-06-01
1	2004 ISSUE UPDATE (INFORMATION ONLY)	2004-02-13
Issue	Revision	Issue Date

## 5 METRE TRADITIONAL (17th AVE.) POLE INSTALLATION DETAILS



DES: HC (2015-07-14)	SCALE:	DRAWING No.	SHEET
DWN: JA (2015-07-14)	NOT TO SCALE	454.2031.001	-





3	2015 ISSUE UPDATE (INFORMATION ONLY)	2015-07-14
2	2005 ISSUE UPDATE (INFORMATION ONLY)	2005-06-01
1	2004 ISSUE UPDATE (INFORMATION ONLY)	2004-02-13
Issue	Revision	Issue Date

## 7.8 METRE McKENZIE TOWNE STYLE POLE INSTALLATION DETAILS



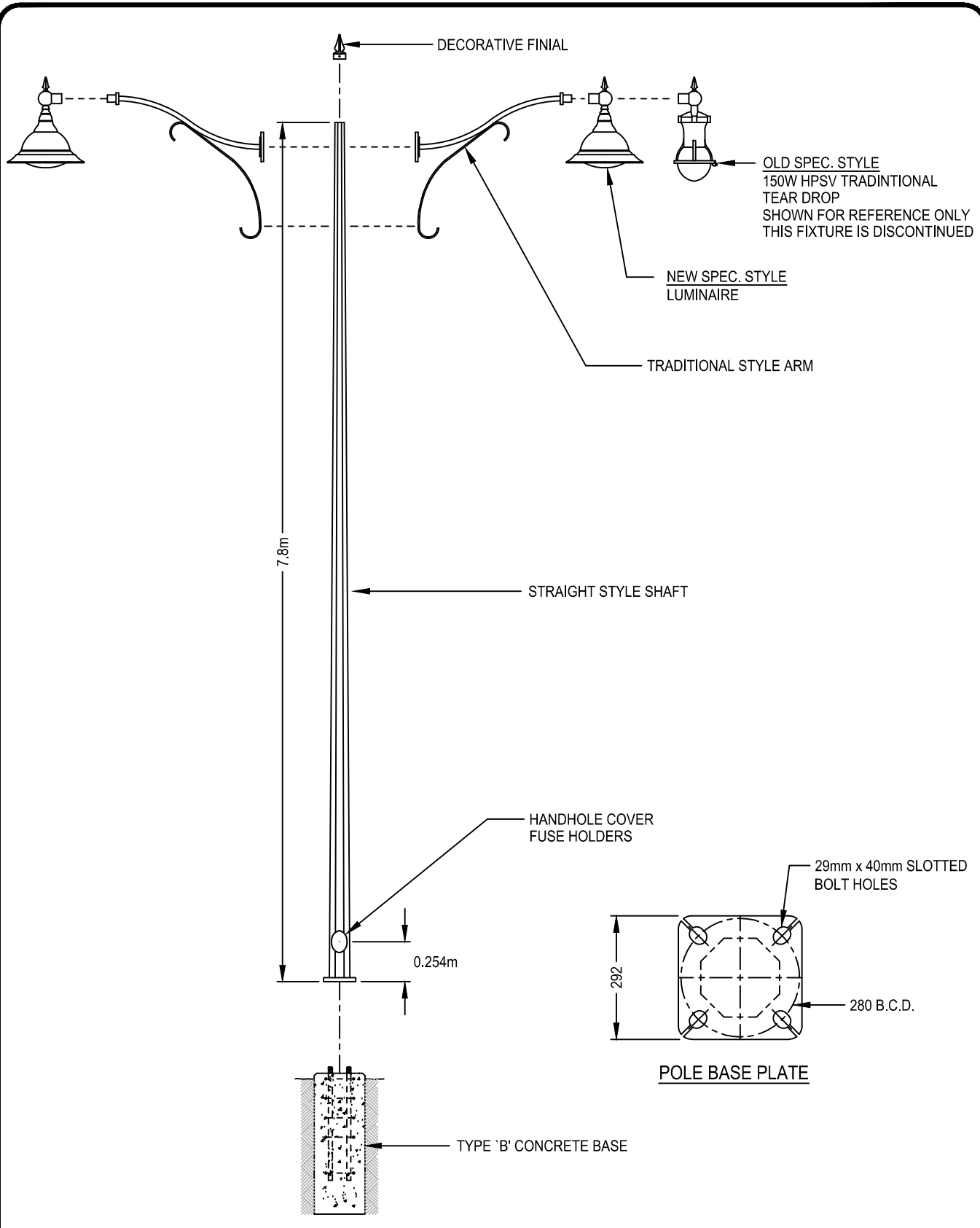
THE CITY OF  
**CALGARY**  
ROADS

DES: HC (2015-07-14)  
DWN: JA (2015-07-14)

SCALE:  
NOT TO SCALE

DRAWING No.  
**454.2047.001**

SHEET  
-



7.8m DOUBLE DAVIT MCKENZIE TOWNE STYLE POLE  
INSTALLATION DETAILS

Issue	Revision	Issue Date



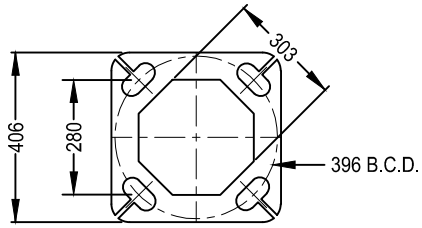
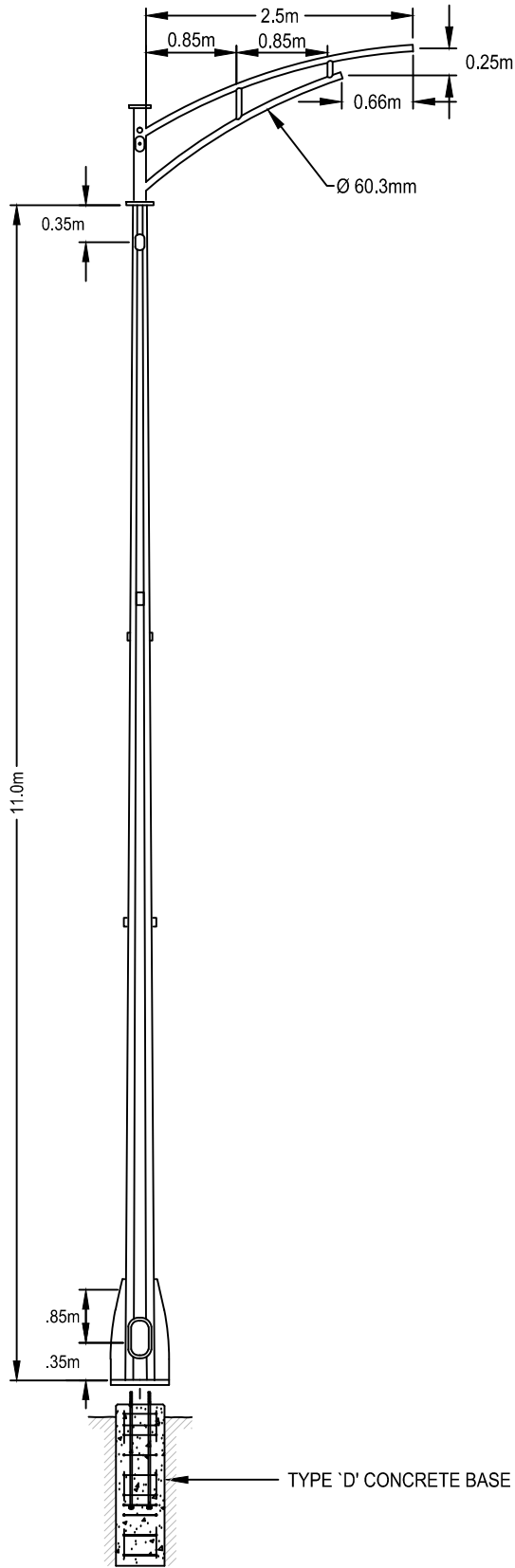
THE CITY OF  
**CALGARY**  
ROADS

DES: HC (2015-07-27)  
DWN: JA (2015-07-30)

SCALE:  
NOT TO SCALE

DRAWING No.  
**454.2047.002**

SHEET  
-

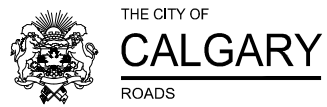


POLE BASE PLATE

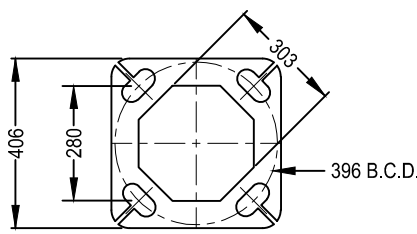
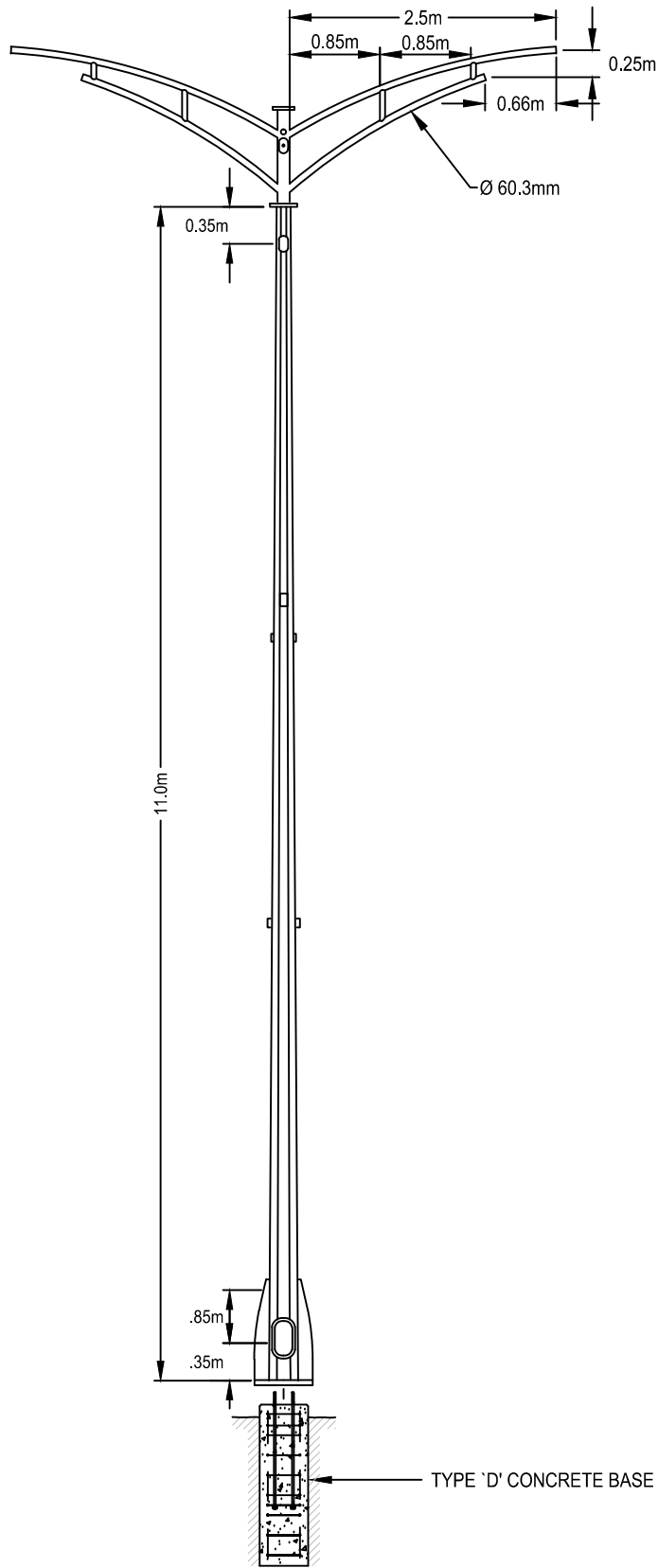
FOR INFORMATION ONLY

Issue	Revision	Issue Date

## 16 AVENUE SINGLE TRUSS POLE INSTALLATION DETAILS



DES: HC (2015-08-13)	SCALE:	DRAWING No.	SHEET
DWN: JA (2015-08-25)	NOT TO SCALE	454.2038.001	-



**POLE BASE PLATE**

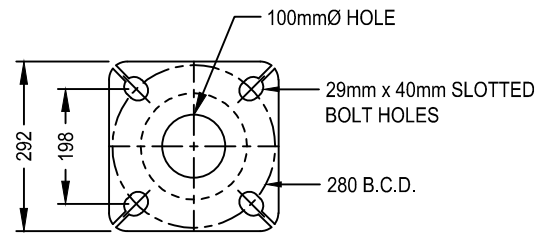
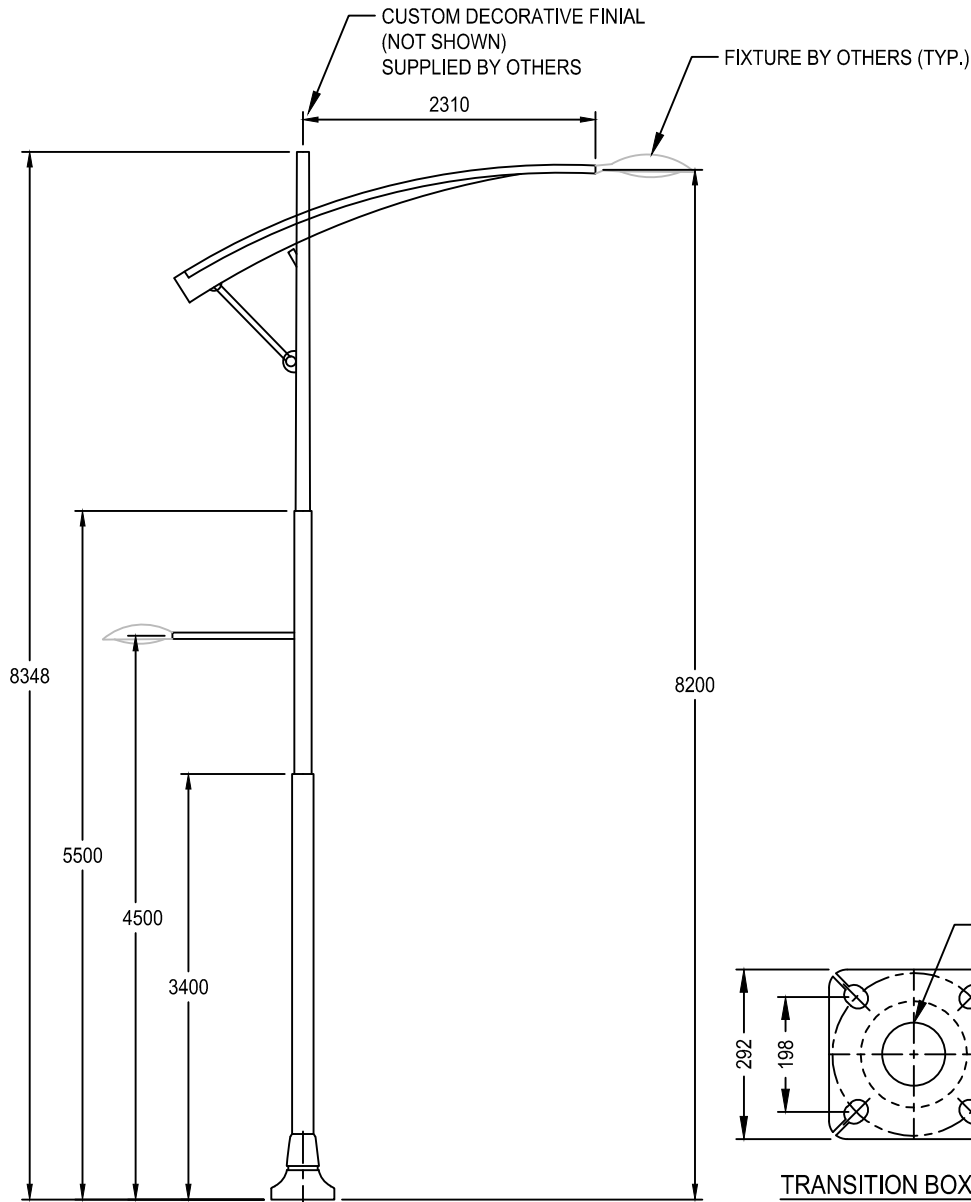
**FOR INFORMATION ONLY**

Issue	Revision	Issue Date

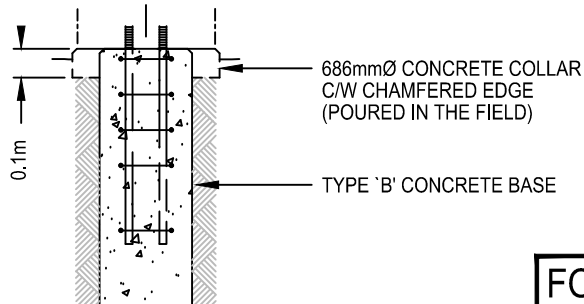
## 16 AVENUE DOUBLE TRUSS POLE INSTALLATION DETAILS



DES: HC (2015-08-13)	SCALE:	DRAWING No.	SHEET
DWN: JA (2015-08-25)	NOT TO SCALE	<b>454.2038.002</b>	-



TRANSITION BOX PLATE



FOR INFORMATION ONLY

VOLUNTEER WAY POLE

Issue	Revision	Issue Date



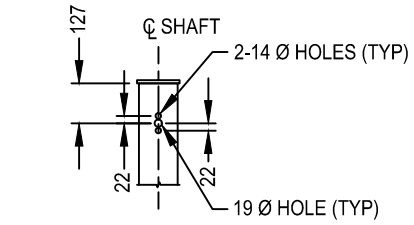
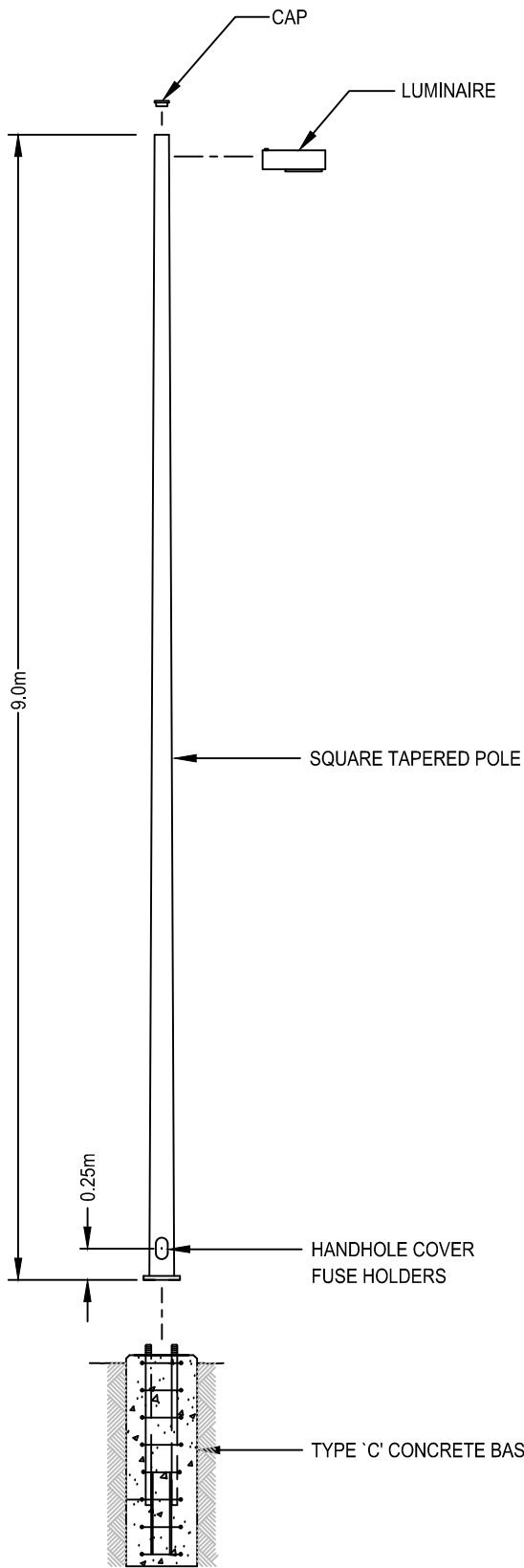
THE CITY OF  
**CALGARY**  
ROADS

DES: HC (2015-07-22)  
DWN: JA (2015-07-22)

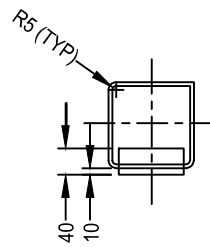
SCALE:  
NOT TO SCALE

DRAWING No.  
**454.2001.005**

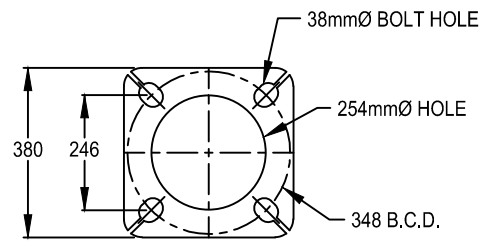
SHEET  
-



LUMINAIRE MOUNTING DETAIL



PLAN



POLE BASE PLATE

FOR INFORMATION  
ONLY

Issue	Revision	Issue Date
5	2015 ISSUE UPDATE	2015-07-22
4	2005 ISSUE UPDATE	2005-06-01
3	2004 ISSUE UPDATE	2004-02-13

## 9 METRE SQUARE STEEL POLE INSTALLATION DETAILS



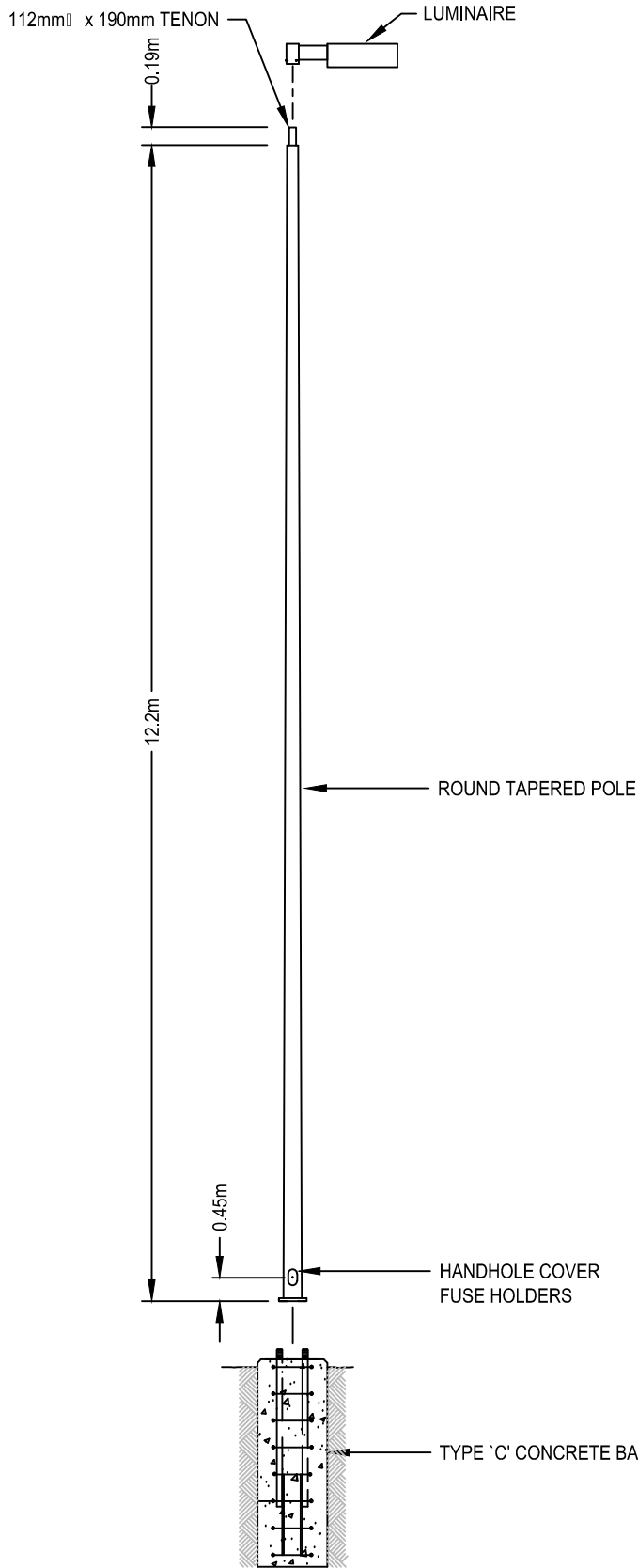
THE CITY OF  
**CALGARY**  
ROADS

DES: HC (2015-07-22)  
DWN: JA (2015-07-22)

SCALE:  
NOT TO SCALE

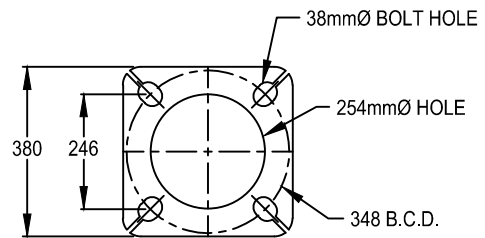
DRAWING No.  
**454.2052.001**

SHEET  
-



**NOTE:**

1. ONLY NEW ORDER 12m ROUND STEEL POLES (2003 OR LATER) WILL MOUNT ON TYPE C BASES.
2. FOR POLES SUPPLIED 2002 AND EARLIER A SPECIAL BASE IS REQUIRED.



**POLE BASE PLATE**

3	2015 ISSUE UPDATE (INFORMATION ONLY)	2015-07-14
2	2005 ISSUE UPDATE (INFORMATION ONLY)	2005-08-01
1	2004 ISSUE UPDATE (INFORMATION ONLY)	2004-02-13
Issue	Revision	Issue Date

## 12 METRE ROUND TAPERED STEEL POLE INSTALLATION DETAILS



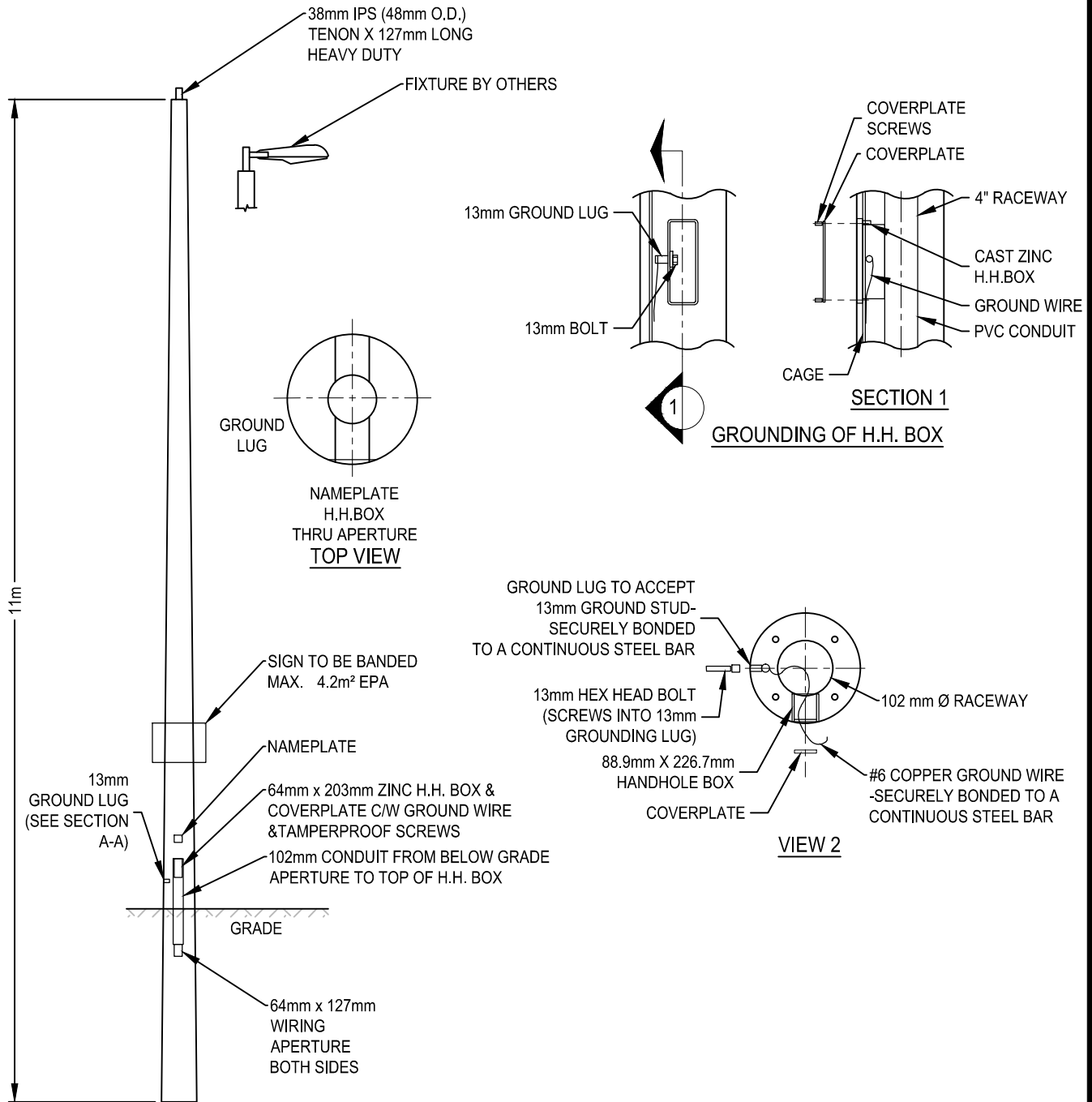
THE CITY OF  
**CALGARY**  
ROADS

DES: HC (2015-07-14)  
DWN: JA (2015-07-14)

SCALE:  
NOT TO SCALE

DRAWING No.  
**454.2053.001**

SHEET  
-



FOR INFORMATION ONLY

## 11m CONCRETE POLE

Issue	Revision	Issue Date



THE CITY OF  
**CALGARY**  
ROADS

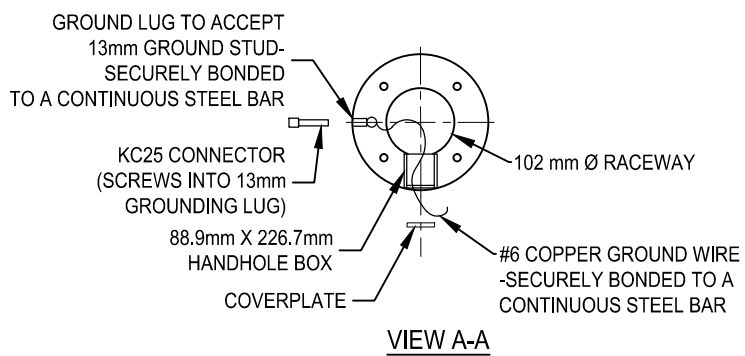
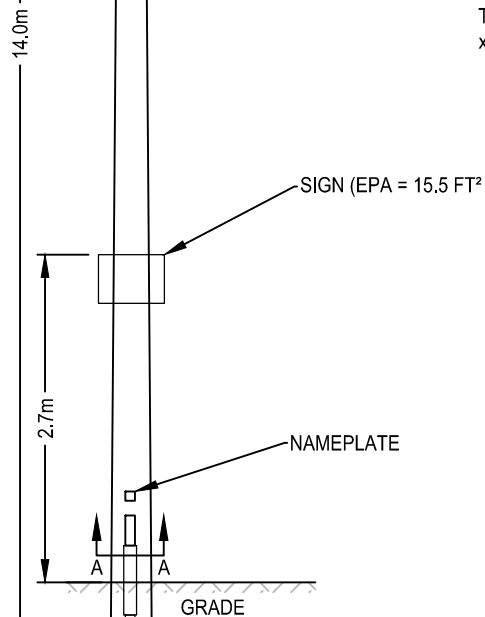
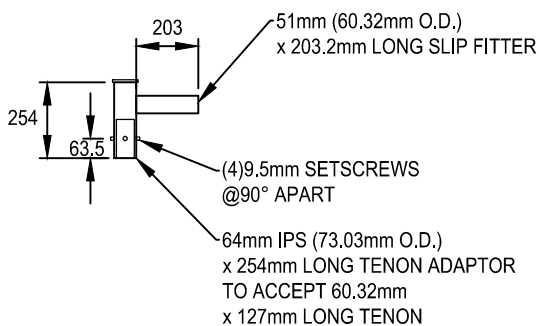
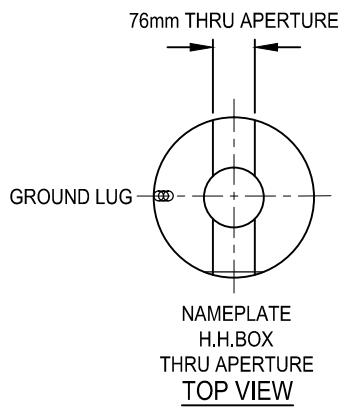
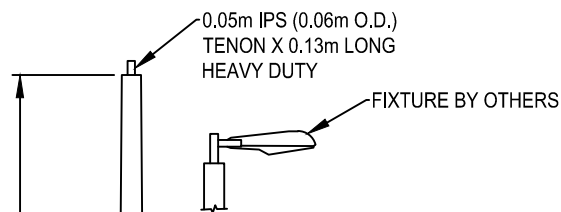
DES: HC (2015-10-21)  
DWN: JA (2015-17-04)

SCALE:  
NOT TO SCALE

DRAWING No.  
**454.2030.001**

SHEET  
-





FOR INFORMATION  
ONLY

14m CONCRETE POLE

Issue	Revision	Issue Date



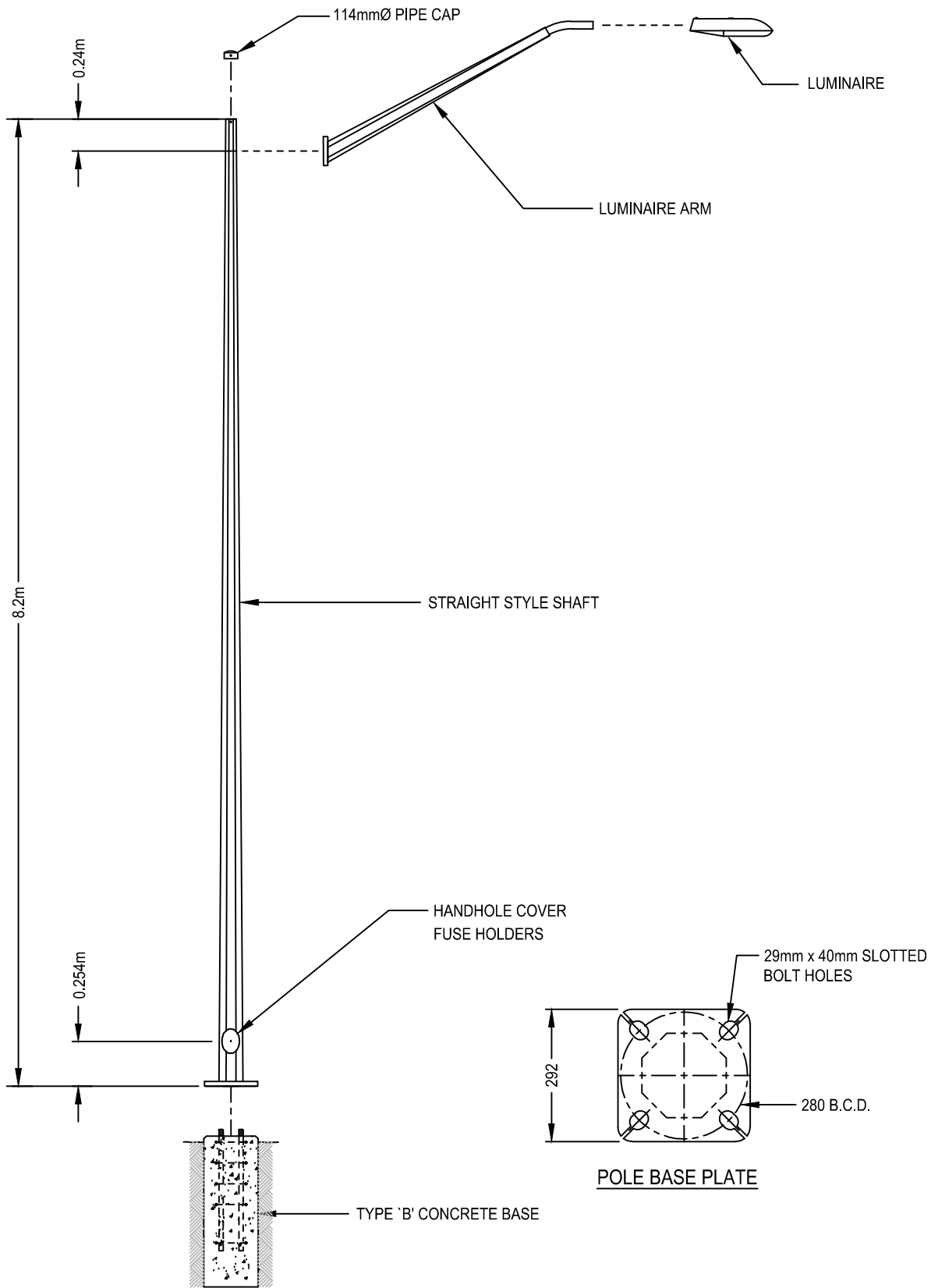
THE CITY OF  
**CALGARY**  
ROADS

DES: HC (2015-07-22)  
DWN: JA (2015-11-17)

SCALE:  
NOT TO SCALE

DRAWING No.  
**454.2030.002**

SHEET  
-



3	2015 ISSUE UPDATE (INFORMATION ONLY)	2015-07-14
2	2006 ISSUE UPDATE - WCE	2006-05-23
1	2004 ISSUE UPDATE (INFORMATION ONLY)	2004-02-13
Issue	Revision	Issue Date

## 8.2 METRE STRAIGHT STEEL POLE INSTALLATION DETAILS



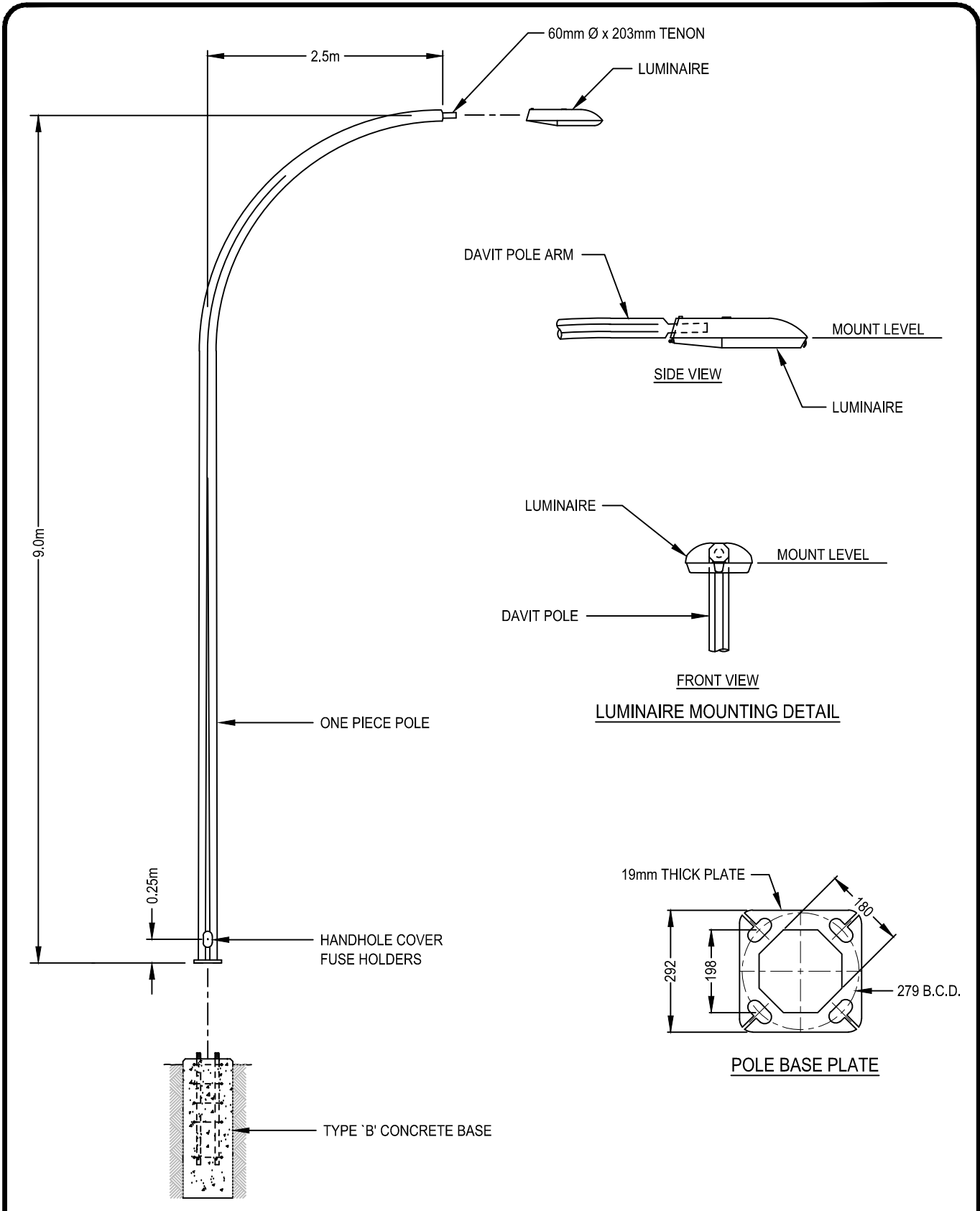
THE CITY OF  
**CALGARY**  
ROADS

DES: HC (2015-07-14)  
DWN: JA (2015-07-14)

SCALE:  
NOT TO SCALE

DRAWING No.  
**454.2048.001**

SHEET  
-



5	2015 ISSUE UPDATE	2015-07-30
4	2006 ISSUE UPDATE - WCE	2006-05-15
3	2004 ISSUE UPDATE	2004-02-13
Issue	Revision	Issue Date

## 9m/2.5m SINGLE DAVIT POLE INSTALLATION DETAILS



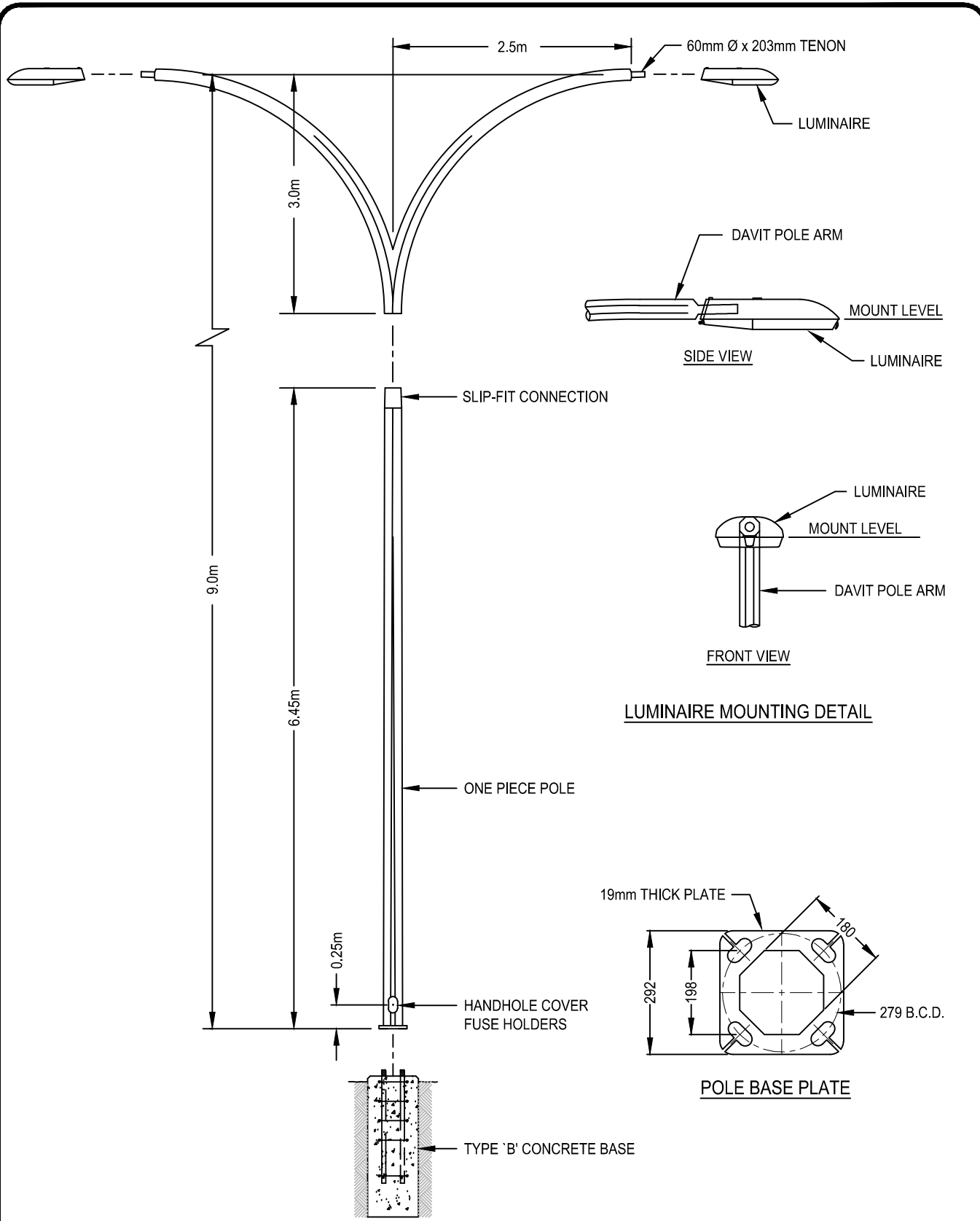
THE CITY OF  
**CALGARY**  
ROADS

DES: HC (2015-07-27)  
DWN: JA (2015-07-30)

SCALE:  
NOT TO SCALE

DRAWING No.  
**454.2050.003**

SHEET  
-



3	2015 ISSUE UPDATE	2015-07-30
4	2006 ISSUE UPDATE - WCE	2006-05-15
3	2004 ISSUE UPDATE	2004-02-13
Issue	Revision	Issue Date

## 9m/ 2.5m DOUBLE DAVIT POLE INSTALLATION DETAILS



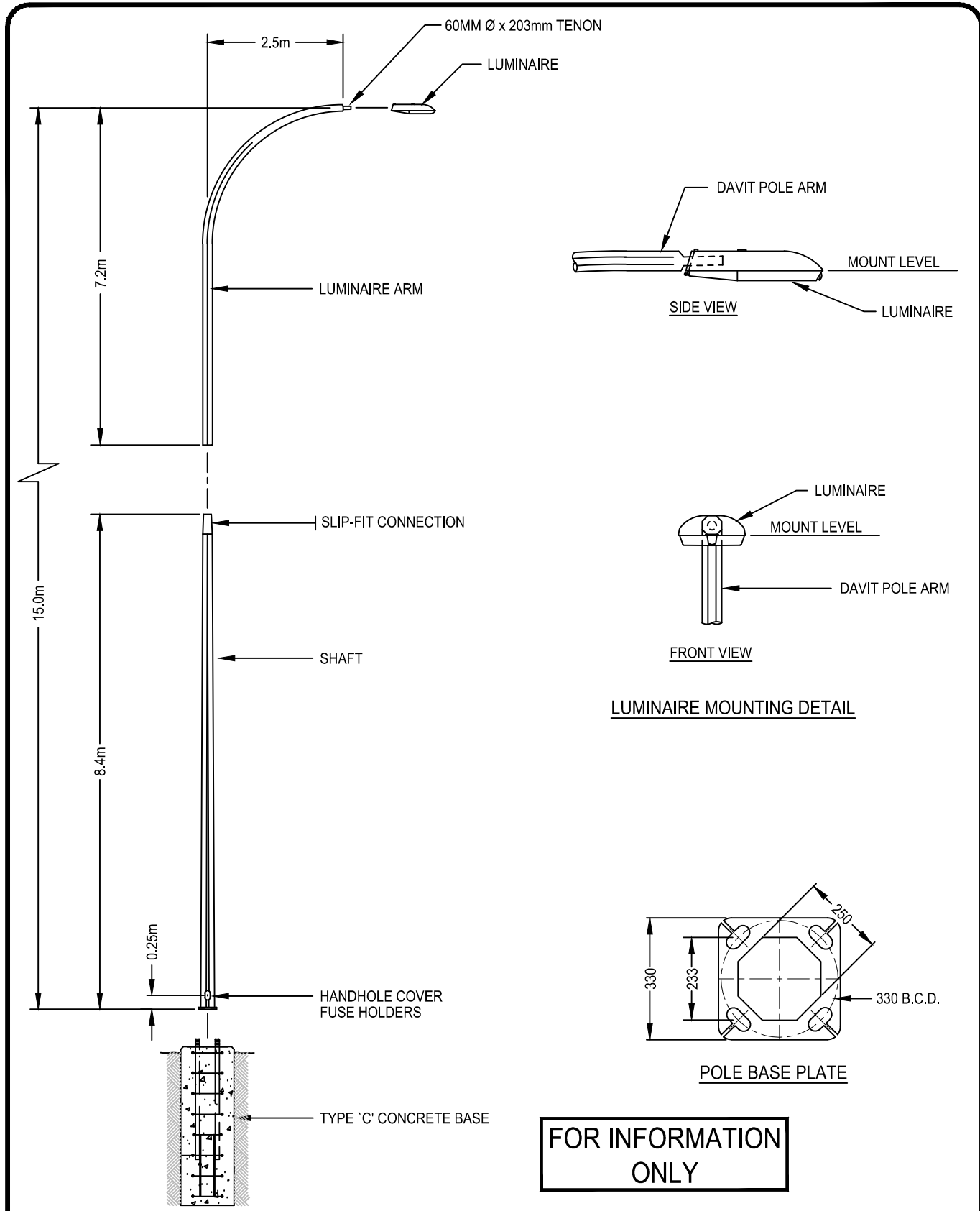
THE CITY OF  
**CALGARY**  
ROADS

DES: HC (2015-07-27)  
DWN: JA (2015-07-30)

SCALE:  
NOT TO SCALE

DRAWING No.  
**454.2051.003**

SHEET  
-



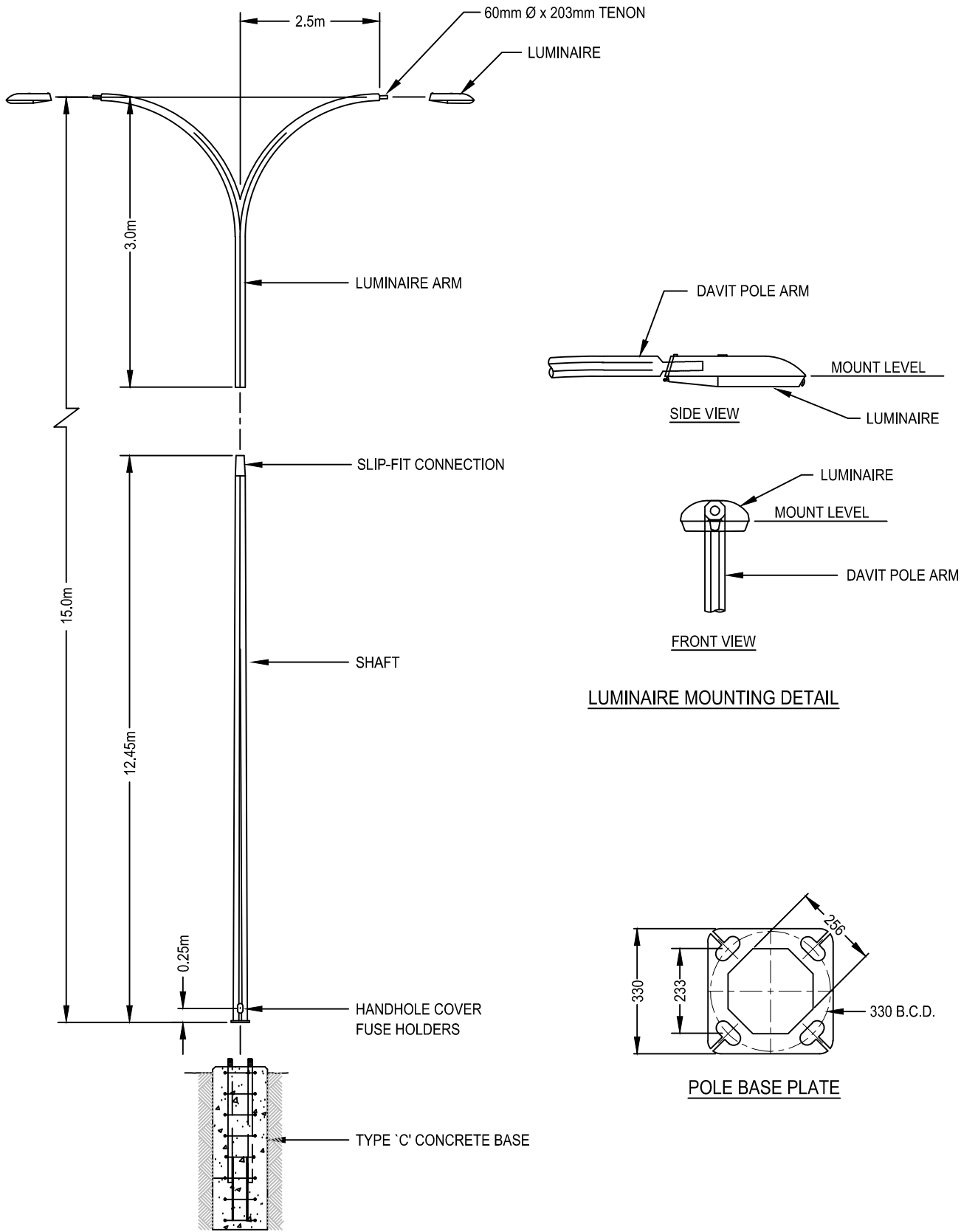
FOR INFORMATION ONLY

3	2015 ISSUE UPDATE (INFORMATION ONLY)	2015-07-27
2	2006 ISSUE UPDATE (INFORMATION ONLY)	2006-05-15
1	2004 ISSUE UPDATE (INFORMATION ONLY)	2004-02-13
Issue	Revision	Issue Date

## 15m/2.5m SINGLE DAVIT POLE INSTALLATION DETAILS



DES: HC (2015-07-27)	SCALE: NOT TO SCALE	DRAWING No. 454.2054.003	SHEET -
DWN: JA (2015-07-31)			



5	2015 ISSUE UPDATE (INFORMATION ONLY)	2015-07-27
4	2006 ISSUE UPDATE - WCE	2005-08-01
3	2004 ISSUE UPDATE (INFORMATION ONLY)	2004-02-13
Issue	Revision	Issue Date

## 15m/2.5m DOUBLE DAVIT POLE INSTALLATION DETAILS



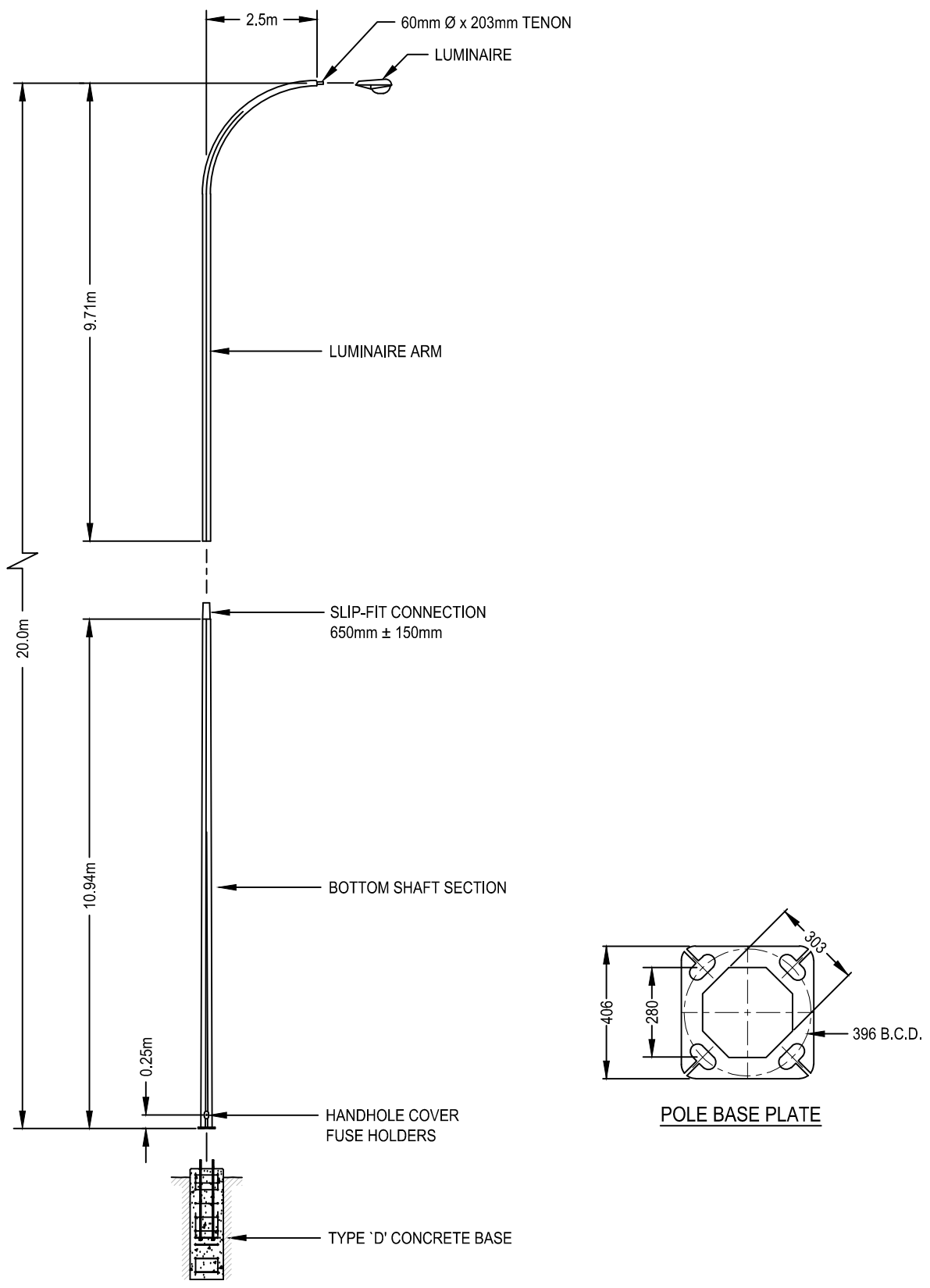
THE CITY OF  
**CALGARY**  
ROADS

DES: HC (2015-07-27)  
DWN: JA (2015-07-31)

SCALE:  
NOT TO SCALE

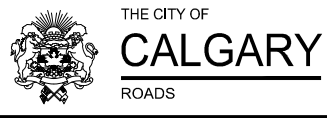
DRAWING No.  
**454.2055.003**

SHEET  
-

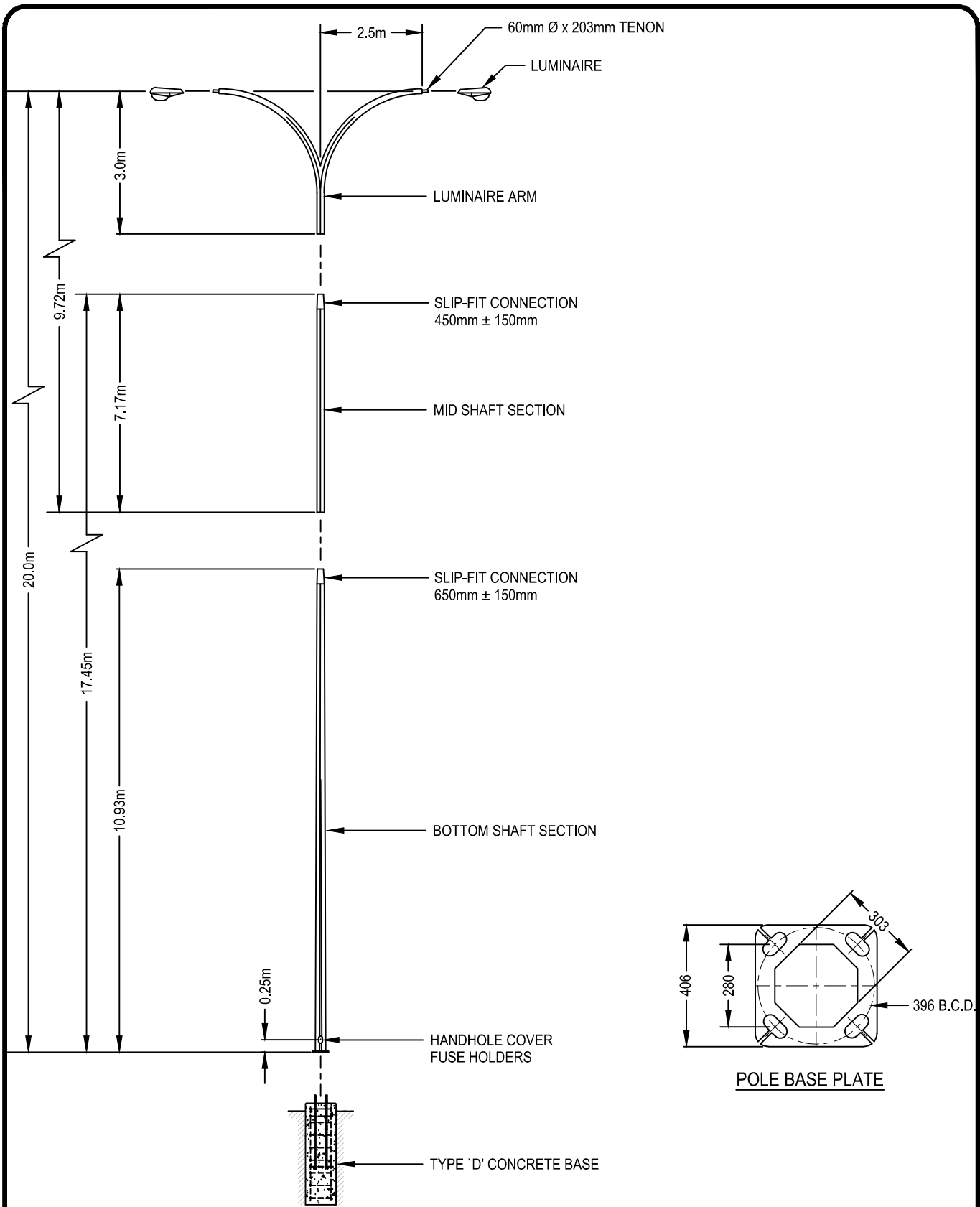


3	2015 ISSUE UPDATE (INFORMATION ONLY)	2015-07-27
2	2006 ISSUE UPDATE (INFORMATION ONLY)	2006-05-15
1	2004 ISSUE UPDATE (INFORMATION ONLY)	2004-02-13
Issue	Revision	Issue Date

## 20m/2.5m SINGLE DAVIT POLE INSTALLATION DETAILS



DES: HC (2015-07-27)	SCALE:	DRAWING No.	SHEET
DWN: JA (2015-07-31)	NOT TO SCALE	454.2056.003	-



5	2015 ISSUE UPDATE (INFORMATION ONLY)	2015-07-27
4	2006 ISSUE UPDATE (INFORMATION ONLY)	2006-05-15
3	2004 ISSUE UPDATE (INFORMATION ONLY)	2004-02-13
Issue	Revision	Issue Date

## 20m/2.5m DOUBLE DAVIT POLE INSTALLATION DETAILS



THE CITY OF  
**CALGARY**  
ROADS

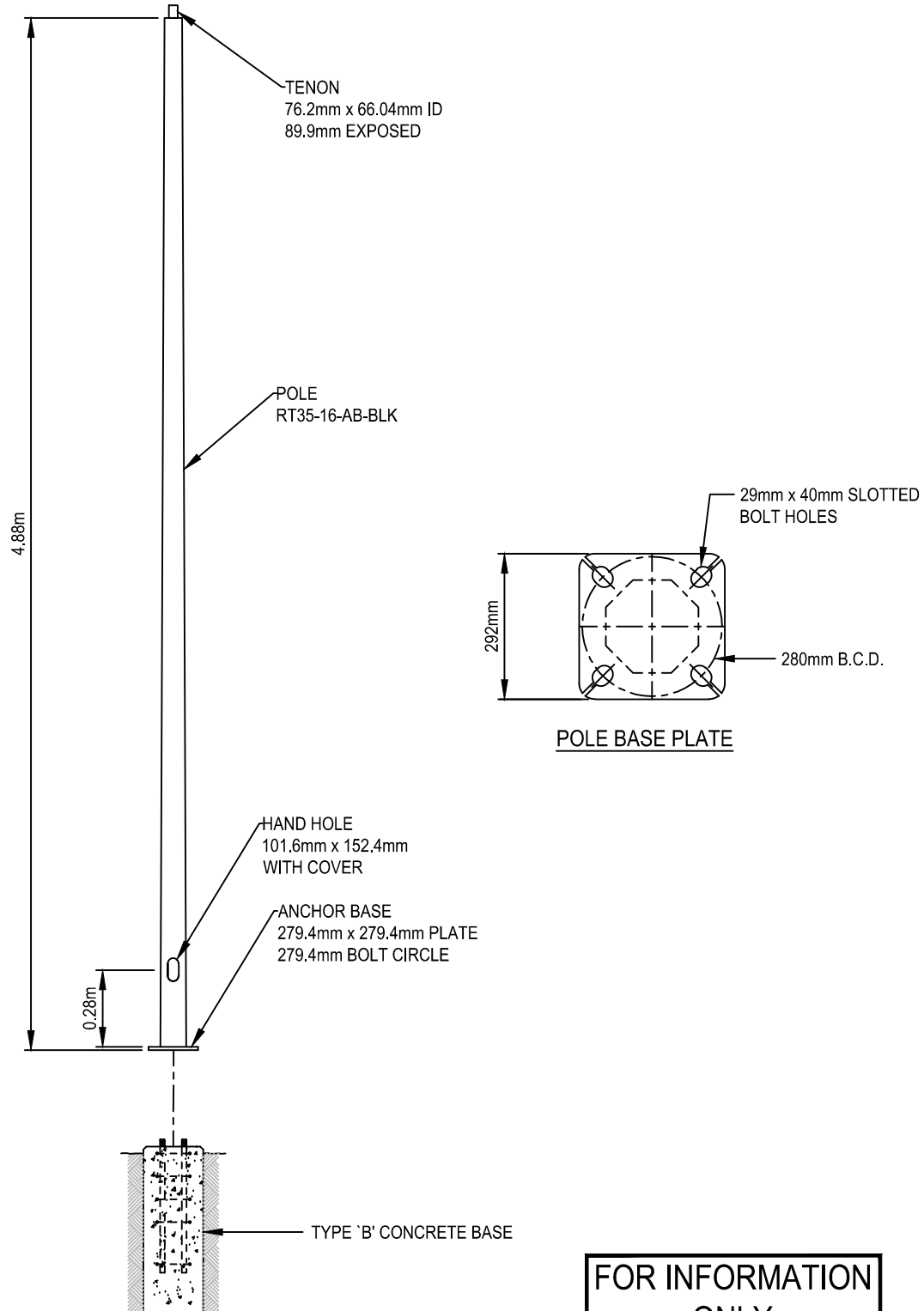
DES: HC (2015-07-27)  
DWN: JA (2015-07-31)

SCALE:  
NOT TO SCALE

DRAWING No.  
**454.2057.003**

SHEET  
-





FOR INFORMATION  
ONLY

Issue	Revision	Issue Date



THE CITY OF  
**CALGARY**  
ROADS

## 5m FIBREGLASS WALKWAY POLE INSTALLATION DETAILS

DES: HC (2015-08-13)

SCALE:

DRAWING No.

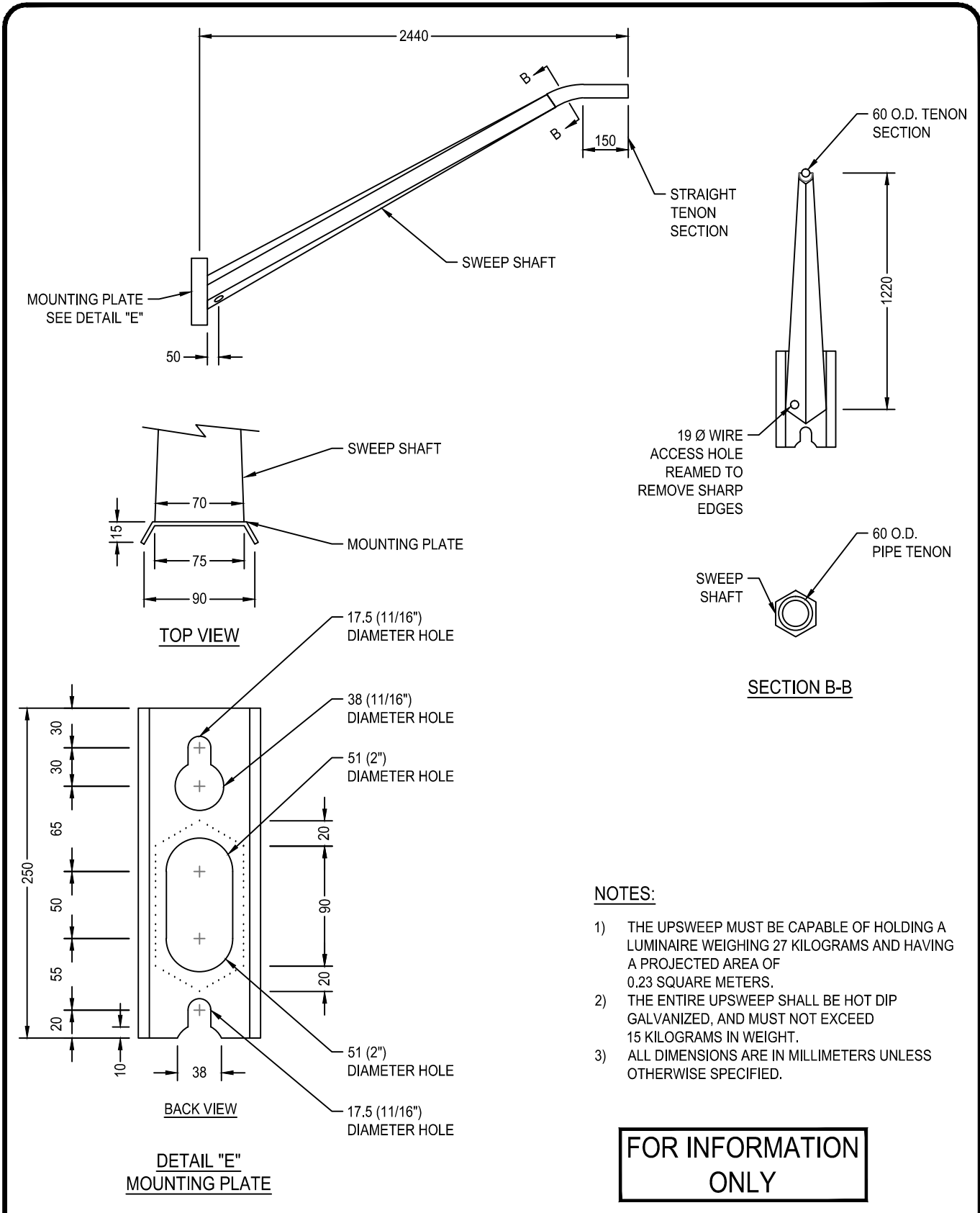
SHEET

DWN: LG (2015-08-13)

NOT TO SCALE

**454.2037.001**

-



FOR INFORMATION ONLY

Issue	Revision	Issue Date



THE CITY OF  
**CALGARY**  
ROADS

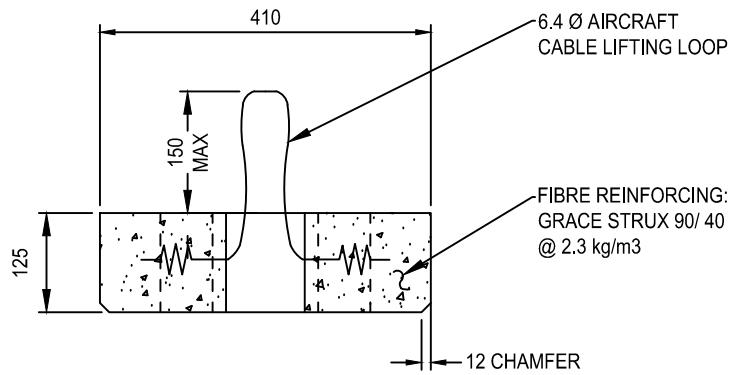
## 2.4 METRE UPSWEEP INSTALLATION DETAILS

DES: HC (2015-08-13)  
DWN: LG (2015-08-13)

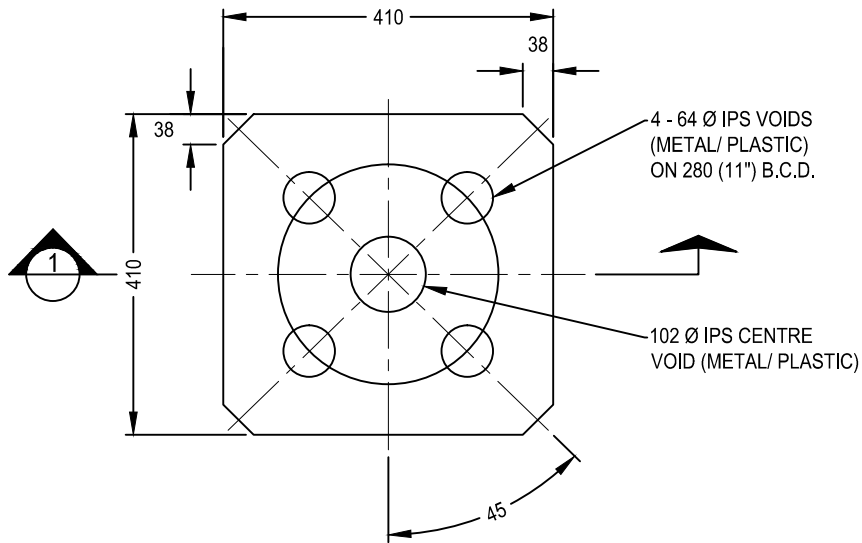
SCALE:  
NOT TO SCALE

DRAWING No.  
**454.2039.001**

SHEET  
-



1 PLINTH SECTION



PLAN OF PLINTH

FOR INFORMATION ONLY

PRECAST PLINTH  
TYPE 1 - 11" B.C.D.

Issue	Revision	Issue Date



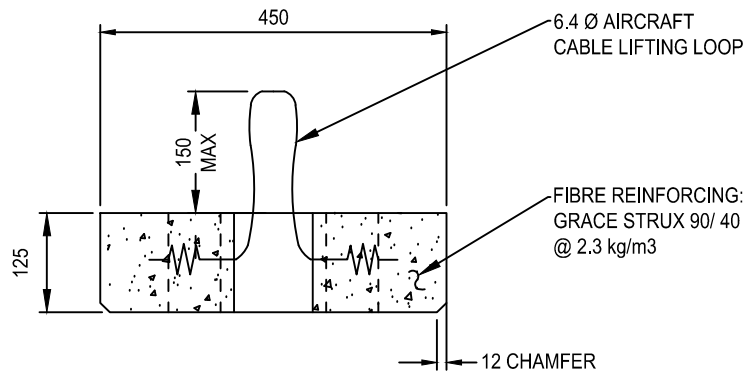
THE CITY OF  
**CALGARY**  
ROADS

DES: HC (2015-10-21)  
DWN: JA (2015-10-21)

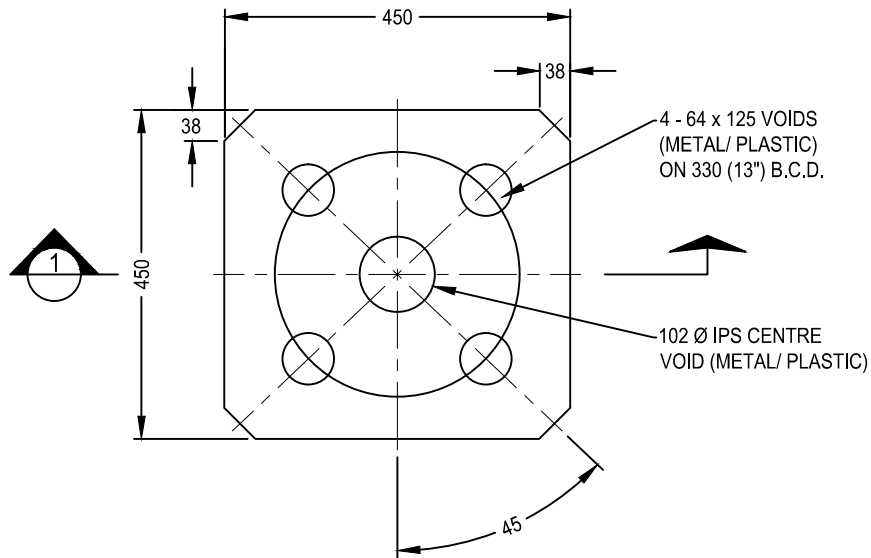
SCALE:  
NOT TO SCALE

DRAWING No.  
**454.2001.007**

SHEET  
-



1 PLINTH SECTION



PLAN OF PLINTH

FOR INFORMATION ONLY

PRECAST PLINTH  
TYPE 2 - 13" B.C.D.

Issue	Revision	Issue Date



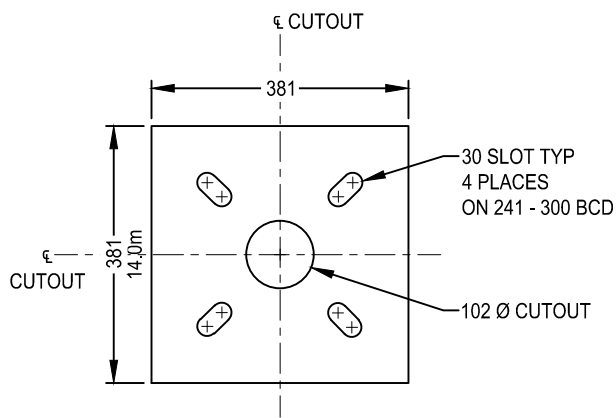
THE CITY OF  
**CALGARY**  
ROADS

DES: HC (2015-11-04)  
DWN: JA (2015-11-04)

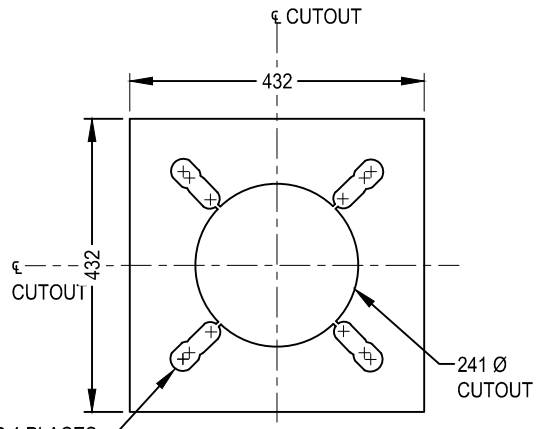
SCALE:  
NOT TO SCALE

DRAWING No.  
**454.2001.008**

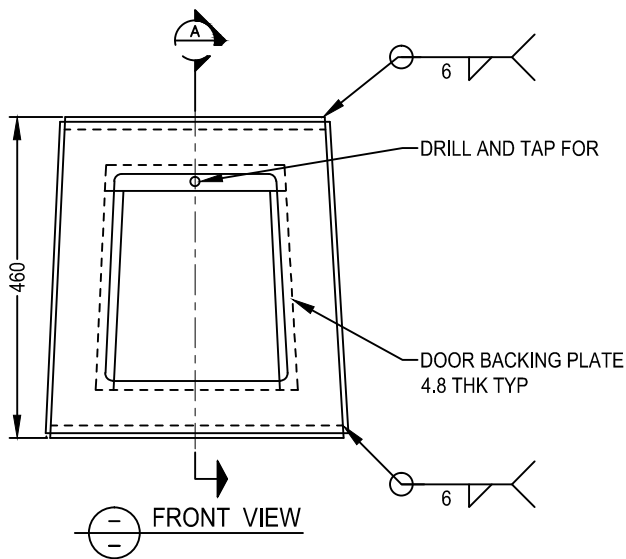
SHEET  
-



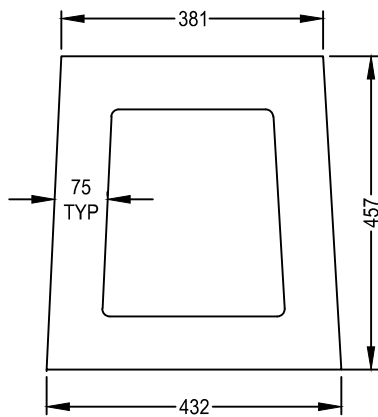
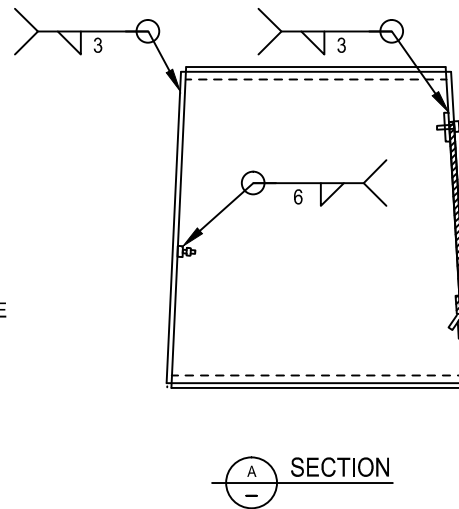
TOP PLATE



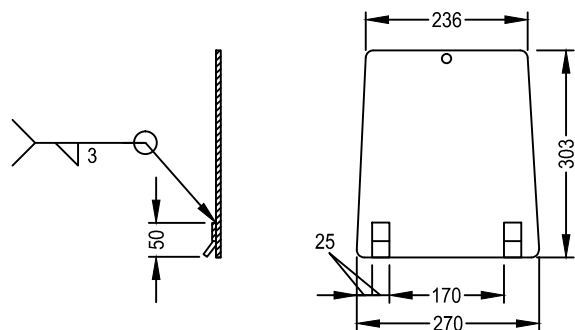
BOTTOM PLATE



FRONT VIEW



DOOR SIDE PANEL VIEW  
DOOR CUT OUT DETAIL ONLY



DOOR DETAIL

FOR INFORMATION ONLY

TRAFFIC SIGNAL  
ADAPTOR (TSA)

Issue	Revision	Issue Date



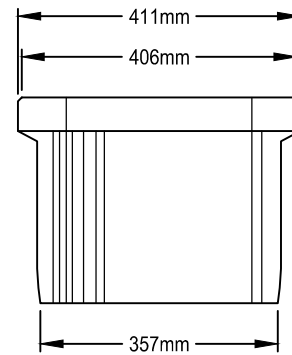
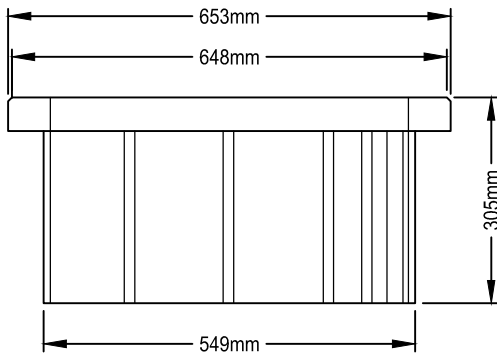
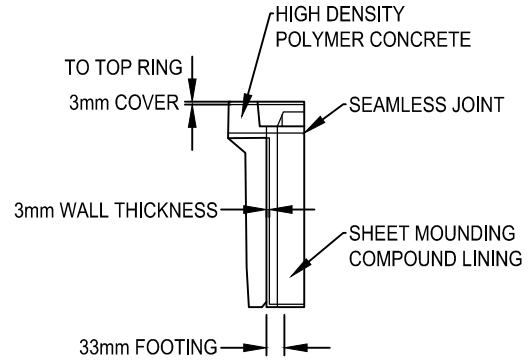
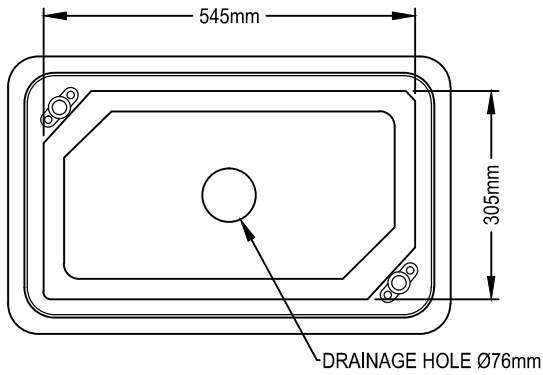
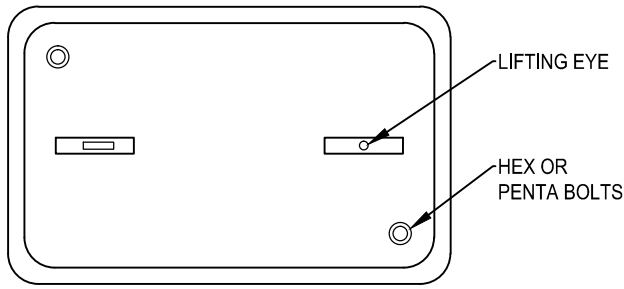
THE CITY OF  
**CALGARY**  
ROADS

DES: HC (2015-08-13)  
DWN: LG (2015-11-20)

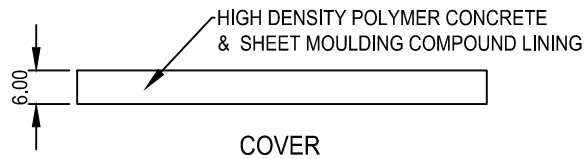
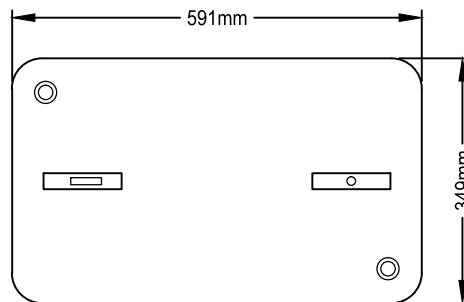
SCALE:  
NOT TO SCALE

DRAWING No.  
**454.2001.009**

SHEET  
-



**JUNCTION BOX**



**FOR INFORMATION ONLY**

Issue	Revision	Issue Date



THE CITY OF  
**CALGARY**  
ROADS

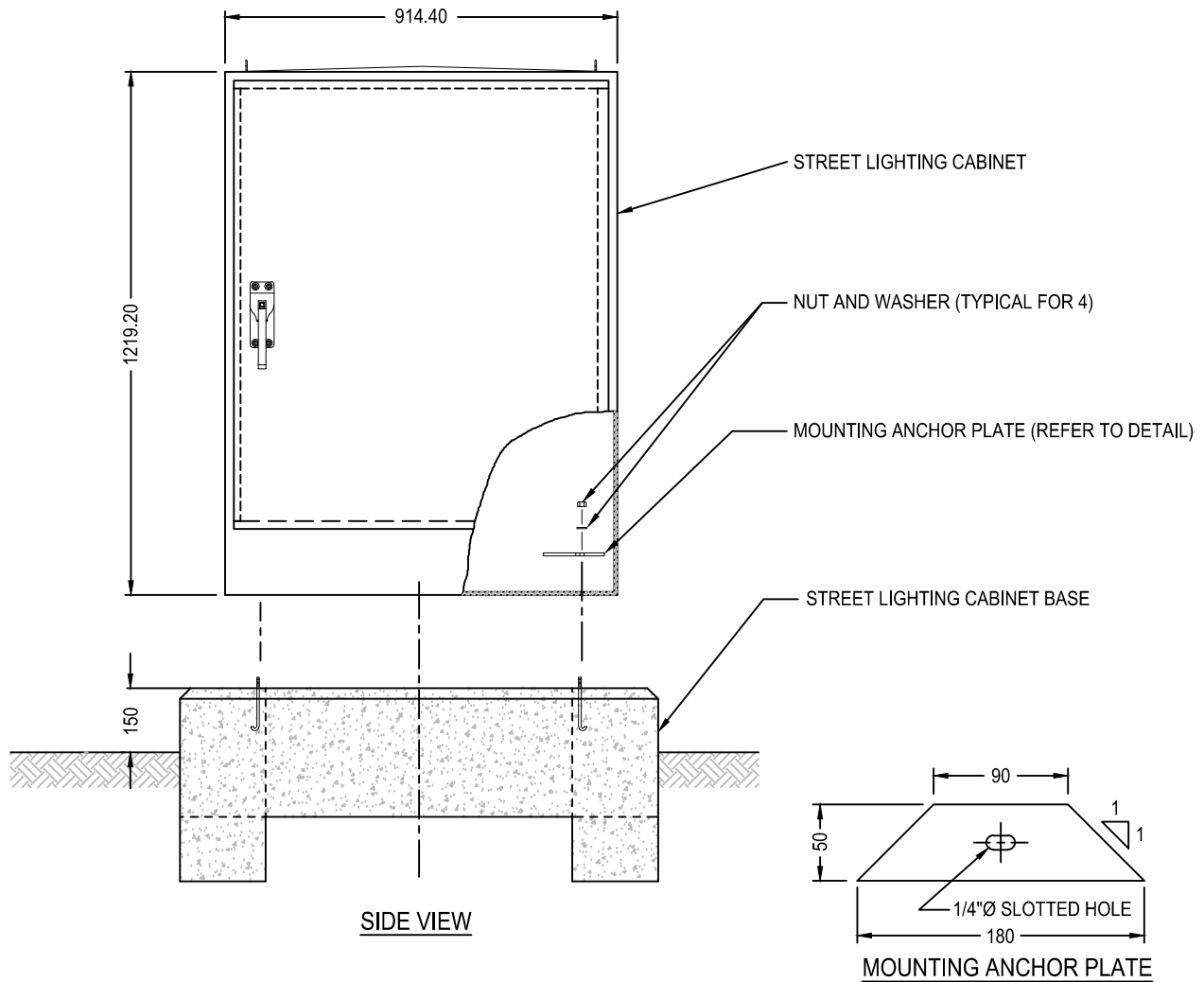
**TYPICAL JUNCTION BOX  
330X610X305 mm DETAIL**

DES: HC (2015-07-22)  
DWN: JA (2015-11-18)

SCALE:  
NOT TO SCALE

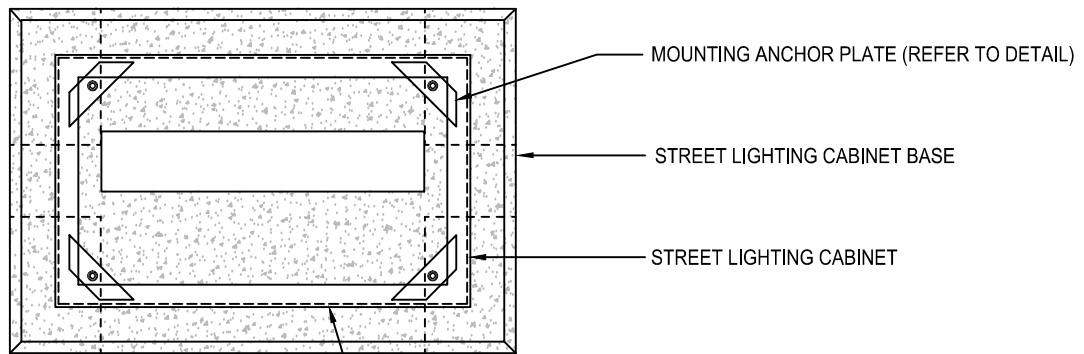
DRAWING No.  
**454.2001.004**

SHEET  
-



SIDE VIEW

MOUNTING ANCHOR PLATE



TOP VIEW

ENSURE WATERTIGHT SEAL  
AROUND BASE OF CABINET

**FOR INFORMATION  
ONLY**

5	2015 ISSUE UPDATE	2015-11-18
4	2005 ISSUE UPDATE	2005-06-01
3	2004 ISSUE UPDATE	2004-02-13
Issue	Revision	Issue Date

## 100A STREETLIGHT SERVICE CABINET INSTALLATION DETAILS



THE CITY OF  
**CALGARY**  
ROADS

DES: PMS  
DWN: DH

SCALE:  
NOT TO SCALE

DRAWING No.  
**454.2001.002**

SHEET  
-