



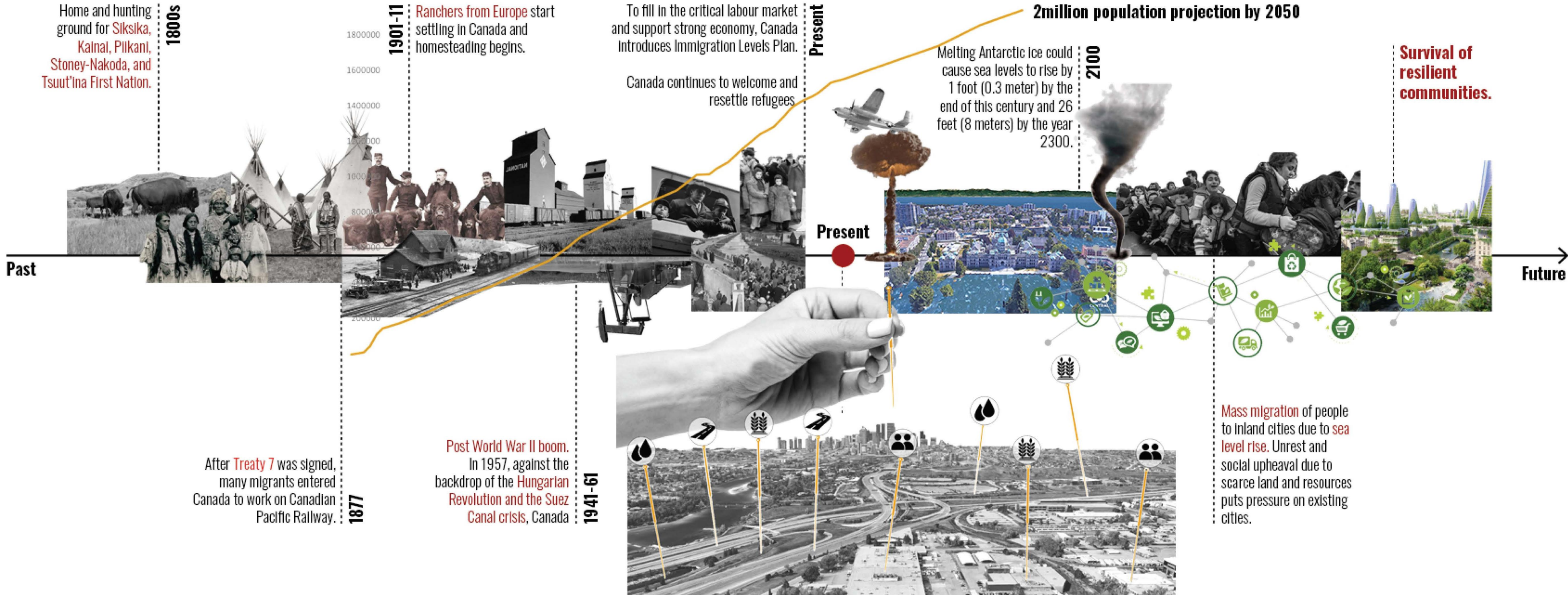
# **URBAN ACUPUNCTURE | BAUKULTUR**

The area around Max Bell/ Barlow LRT station is characteristic by high intensity traffic, fragmentation due to auto-mobile oriented infrastructure, and remnants of urban sprawl.

The project redefines a traditionally car-centric area in Calgary into a high dense, unique, pedestrian-focused area that connect Calgarians to the past, celebrates the present, and builds the foundations for a socially, ecologically, and economically flourishing future.



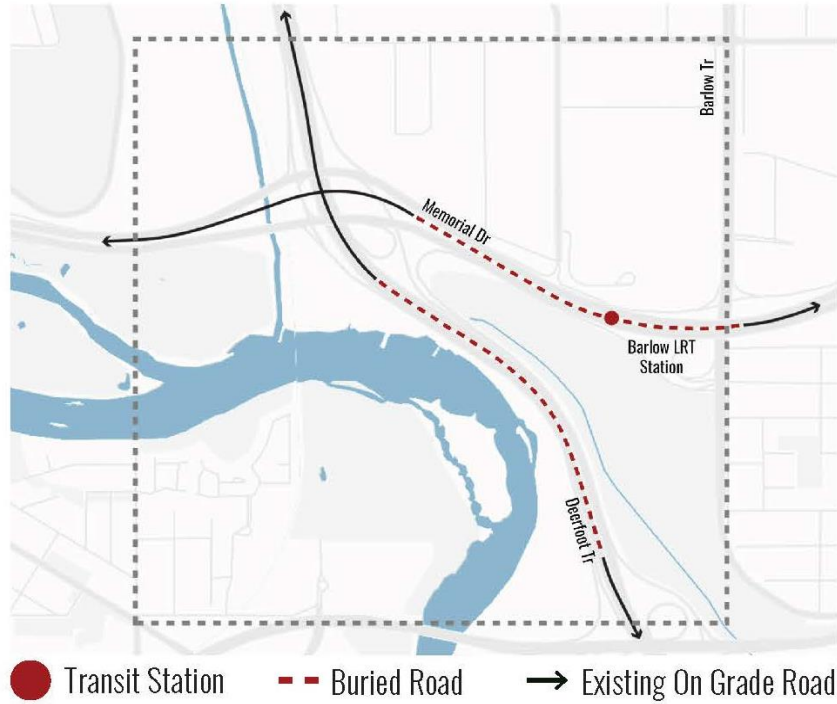
# TRACING OUR JOURNEY



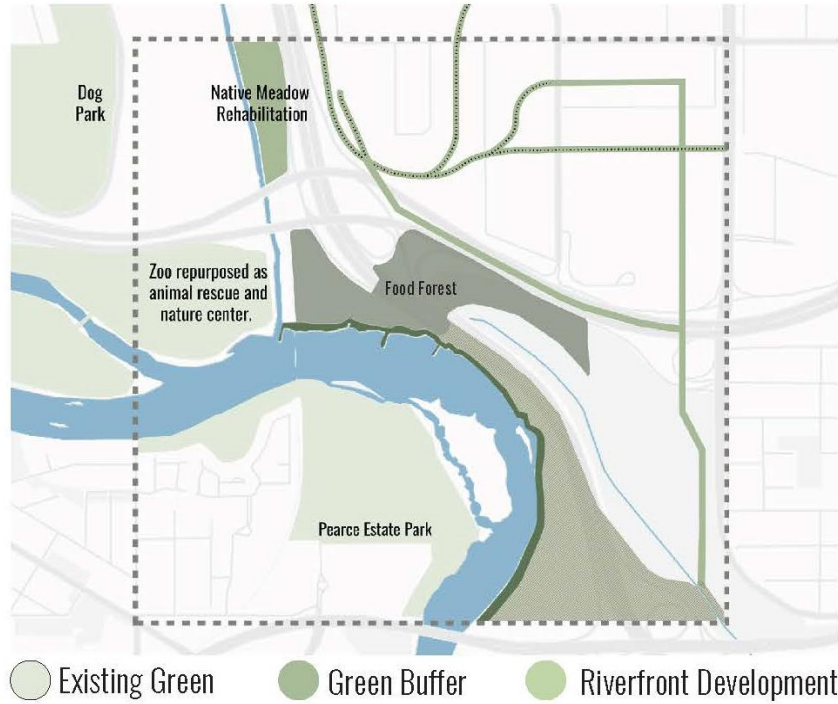


# VISION | PUNCTURES OF SOCIAL CHANGE

## 01 OPEN ROAD SURGERY



## 02 AGRI/ECO PUNCTURE



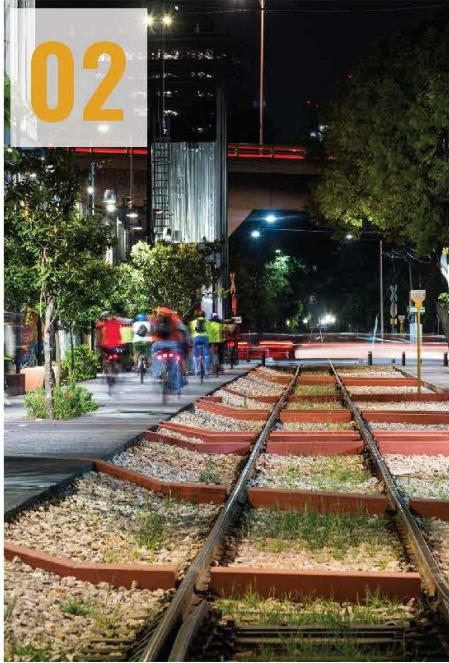
## 03 SOCIO-HISTORIC PUNCTURE



## 04 AQUA PUNCTURE



Madrid Rin



Spur Line Green Corridor



Michigan Urban Farm



AllezUp, Montreal



Birmingham, UK



# DESIGN STRATEGY PLAN

## THE THREE HUBS

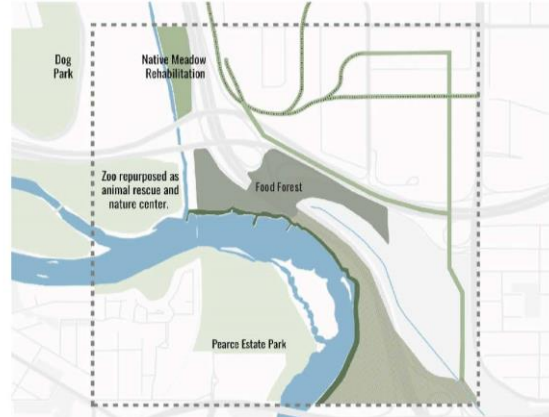
- Cultural hub
- Food hub
- Sports and recreation hub

### 01 OPEN ROAD SURGERY



● Transit Station    - - Buried Road    → Existing On Grade Road

### 02 AGRI/ECO PUNCTURE



○ Existing Green    ● Green Buffer    ● Riverfront Development

### 03 SOCIO-HISTORIC PUNCTURE



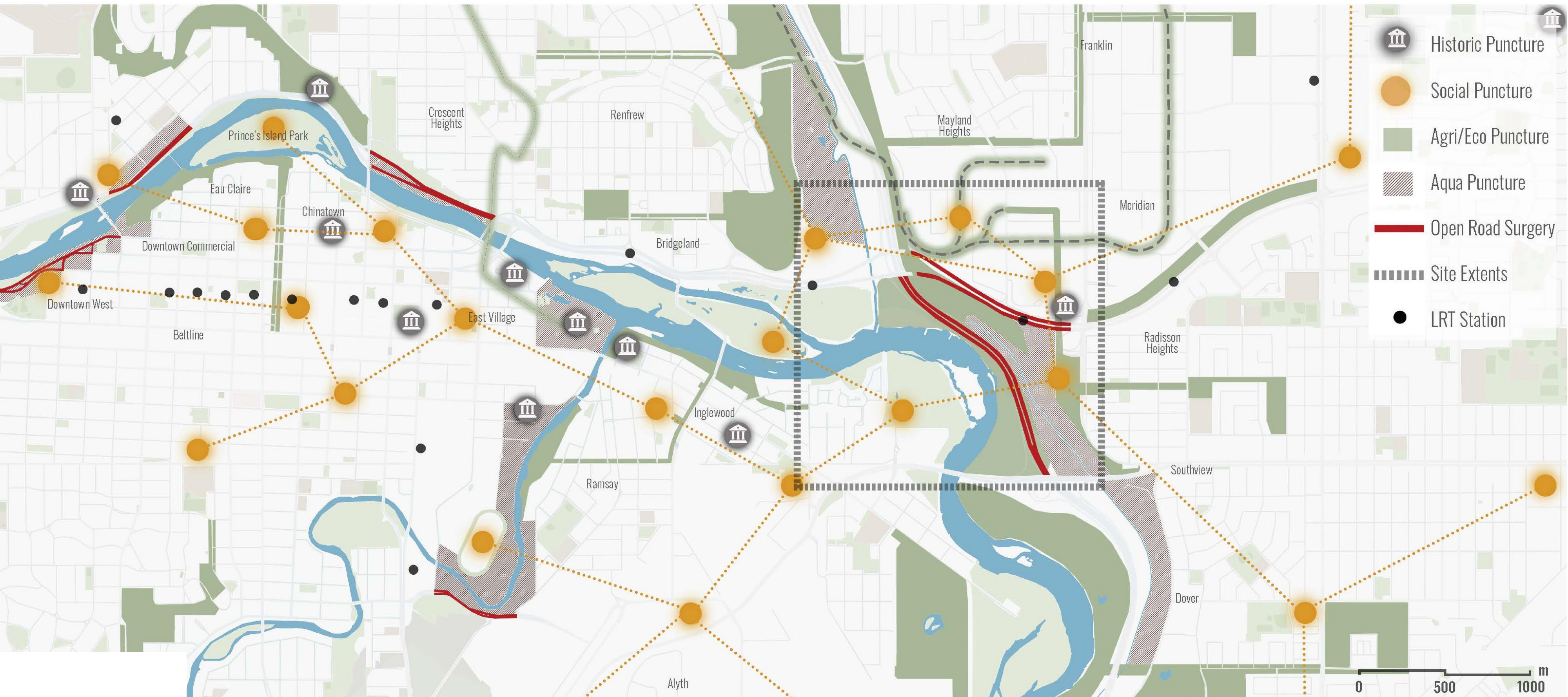
### 04 AQUA PUNCTURE



Proposed New Development Areas



# CONTEXT PLAN





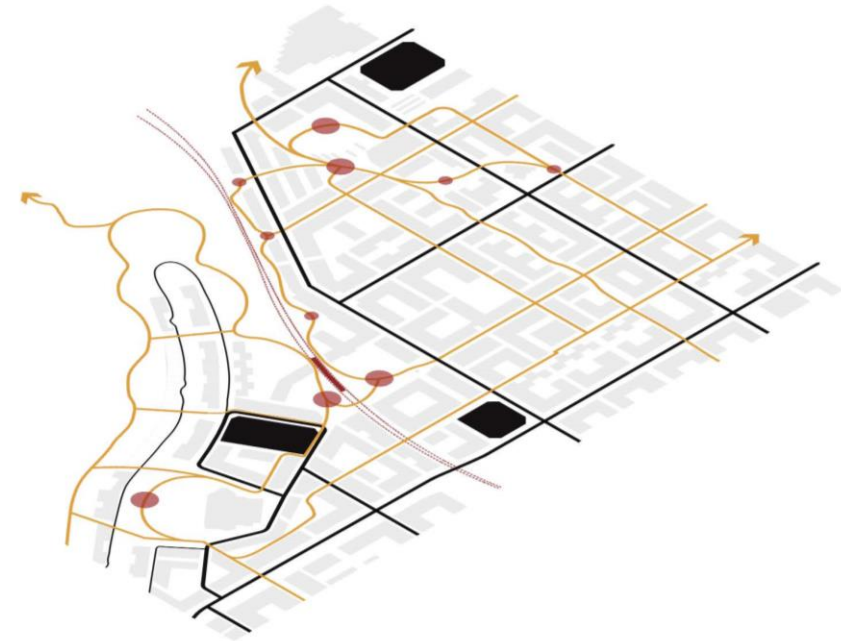
# MASTER PLAN



- Pedestrian Paths
- Public Plazas
- ▨ Major Landmarks

## MOBILITY

- LRT Line
- Bike & Pedestrian
- Main Streets
- Secondary Streets
- Public Plazas
- LRT Station
- Parking



## URBAN MORPHOLOGY

- Social Hubs
- Built Environment



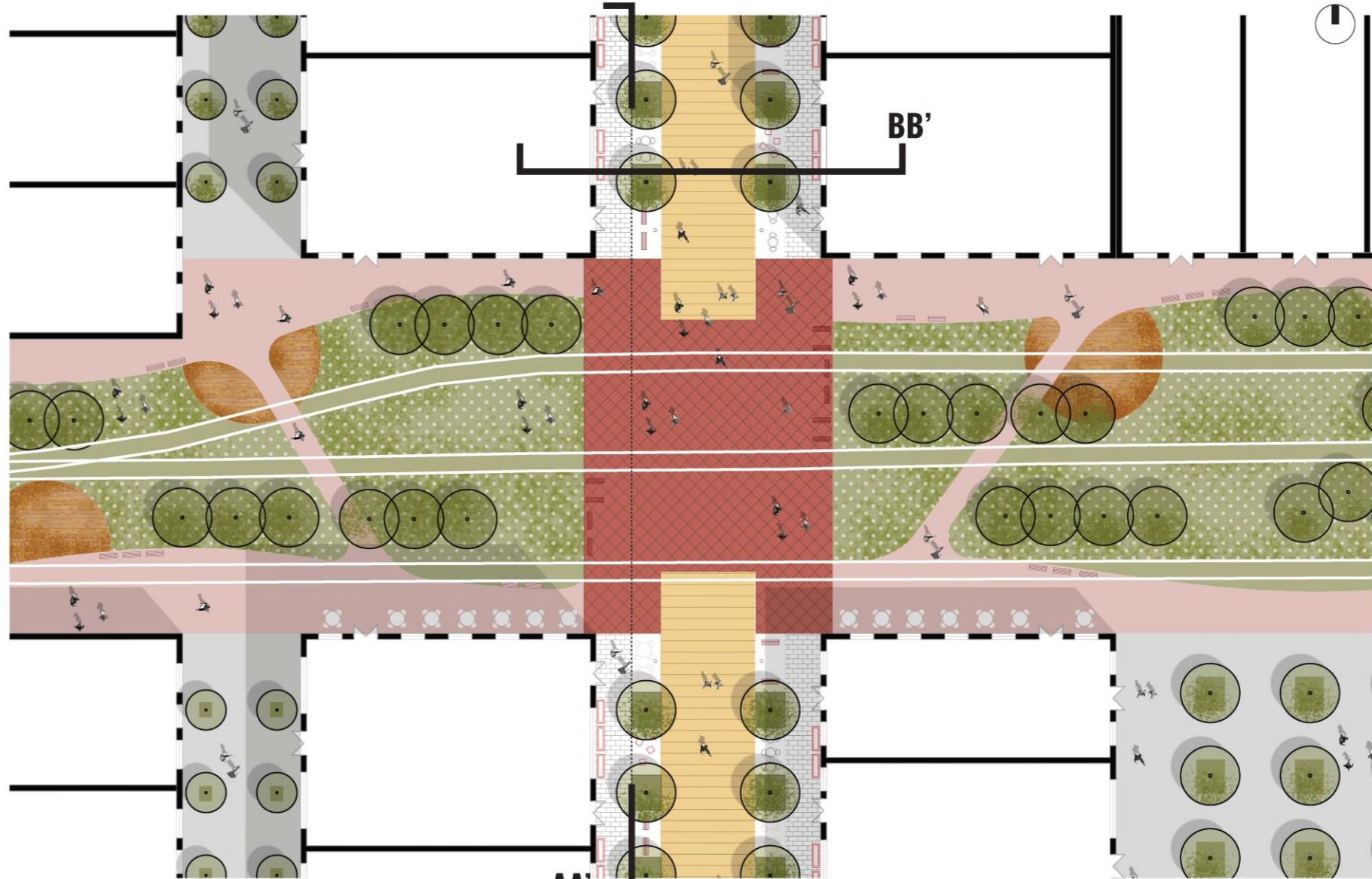
## OPEN SPACE

- Public green space
- Semi-private green space
- Public Plazas





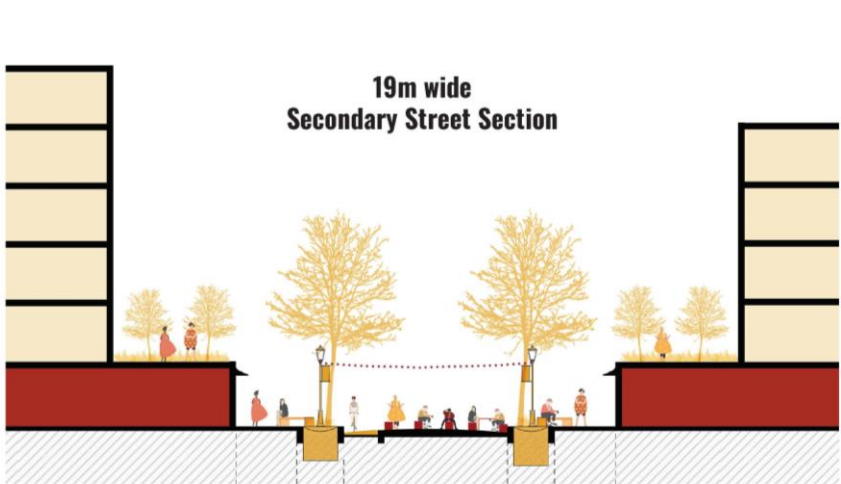
# DETAIL AREA 01 | ECO-PUNCTURE



**DETAIL 01** STREET PLAN | 1:250



Mixed Use Block  
Green Corridor  
31m  
Mixed Use Block  
**STREET ELEVATION AA' | 1:250**



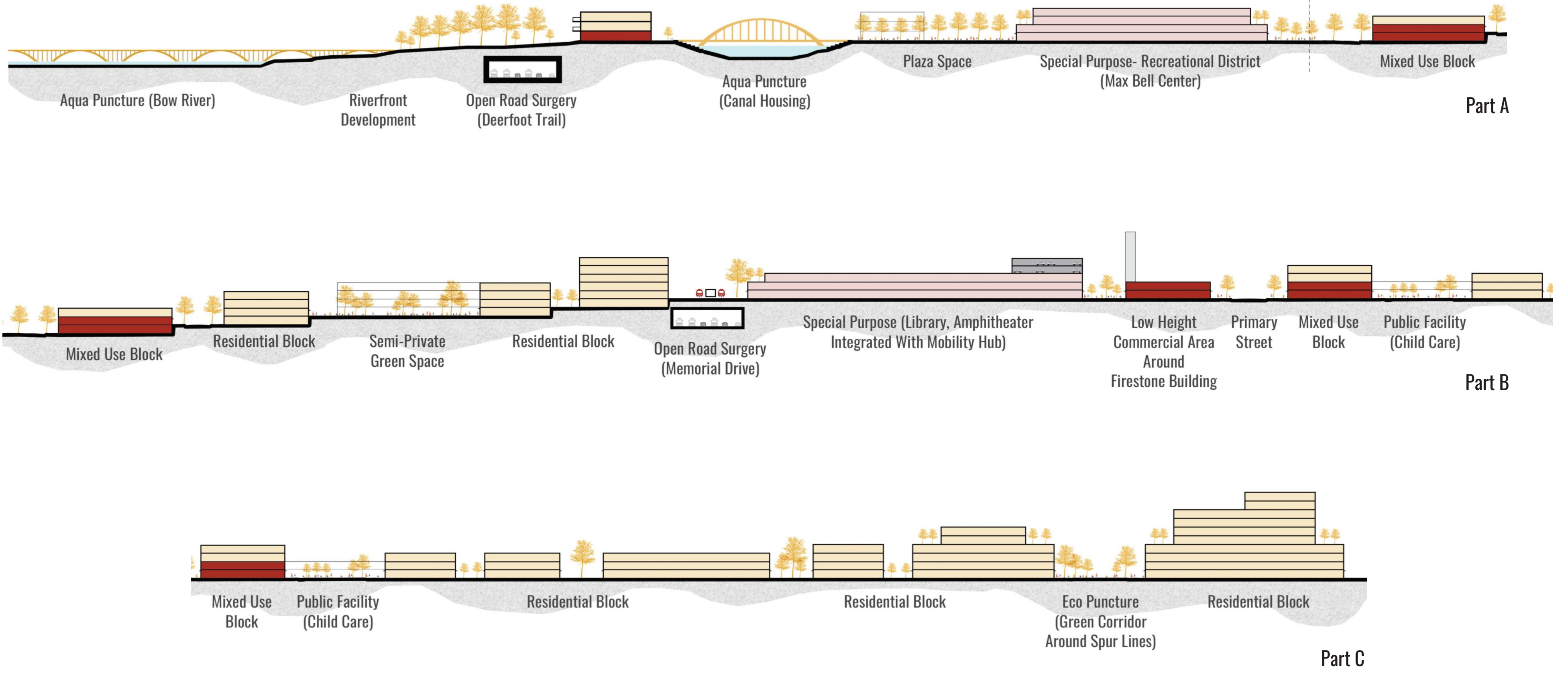
19m wide  
Secondary Street Section  
Mixed Use Block Walk 3m Green 2.5m Street 8m Green 2.5m Walk 3m Mixed Use Block  
**STREET SECTION BB'**



27m wide  
Primary Street Section  
Mixed Use Block Walk 3m Cycle 2m Carriageway 12m Cycle 2m Walk 3m Mixed Use Block  
**STREET SECTION CC'**



# SITE SECTION DD'

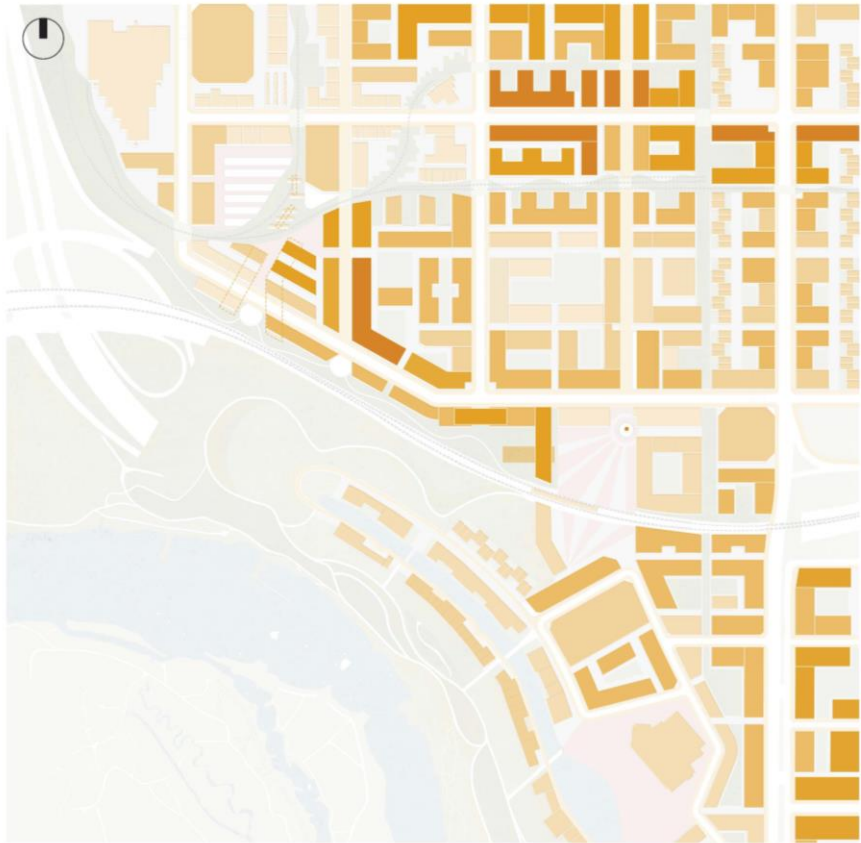




# LAND USE & BUILDING CALCULATIONS

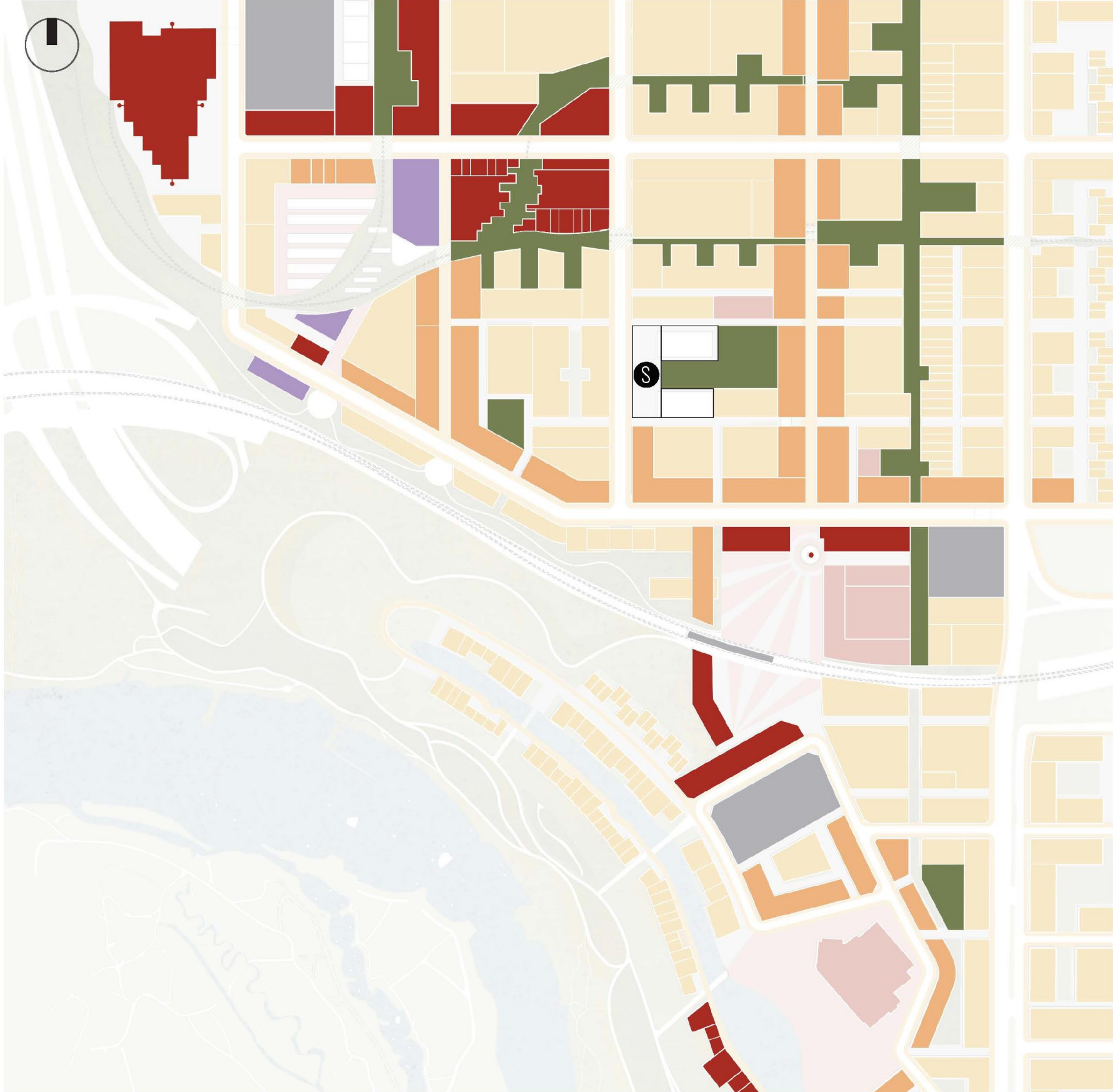
## BUILDING HEIGHTS

- 1-2 Floors
- 3-4 Floors
- 5-6 Floors
- 7-8 Floors
- 9-10 Floors



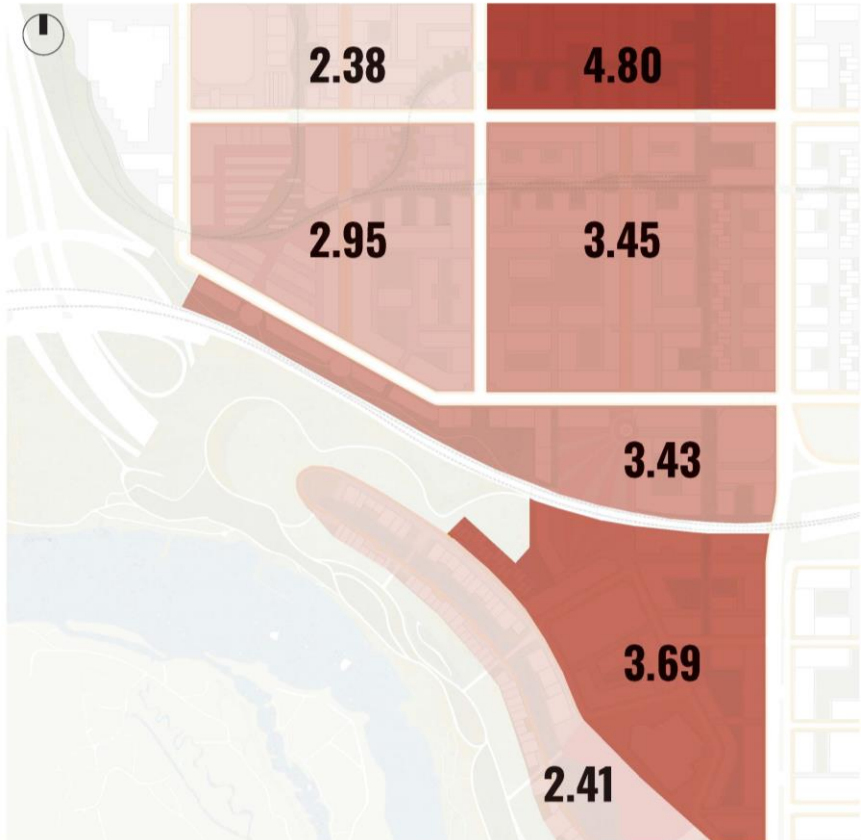
## LANDUSE & PARCELS

- School
- Residential
- Commercial
- Mixed-Use
- Activity Center
- Industrial
- Transport



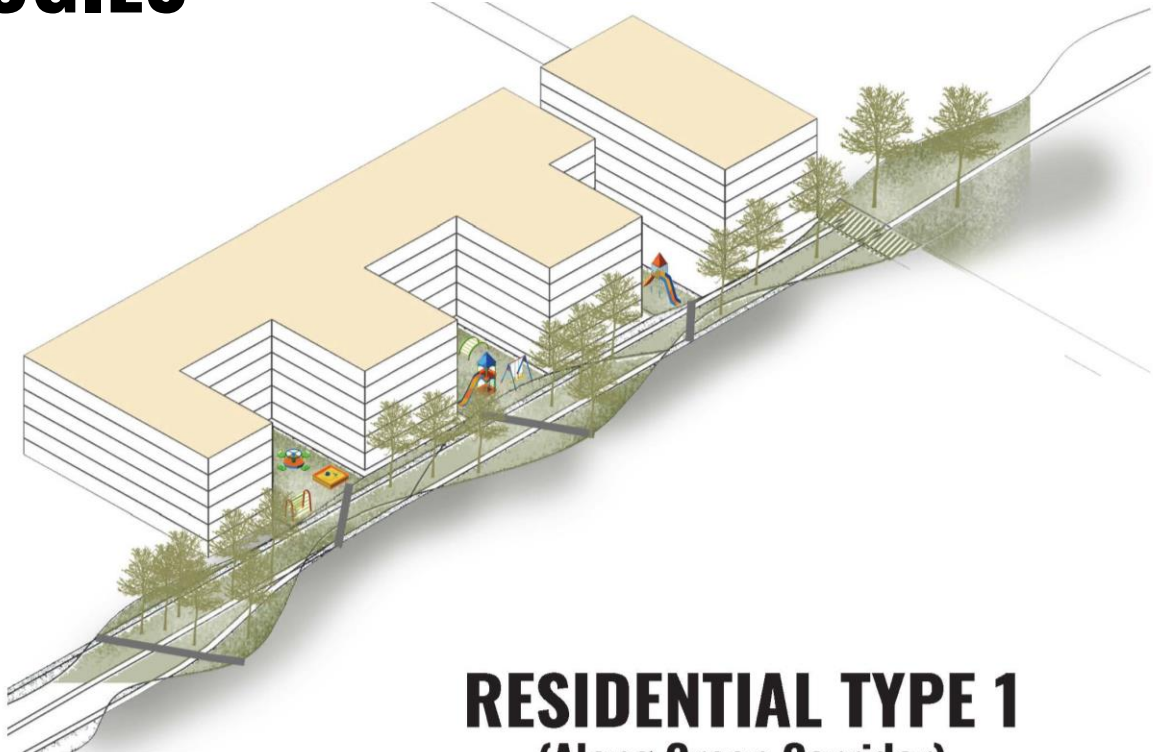
## FAR CALCULATION

**AVERAGE FAR = 3.3**

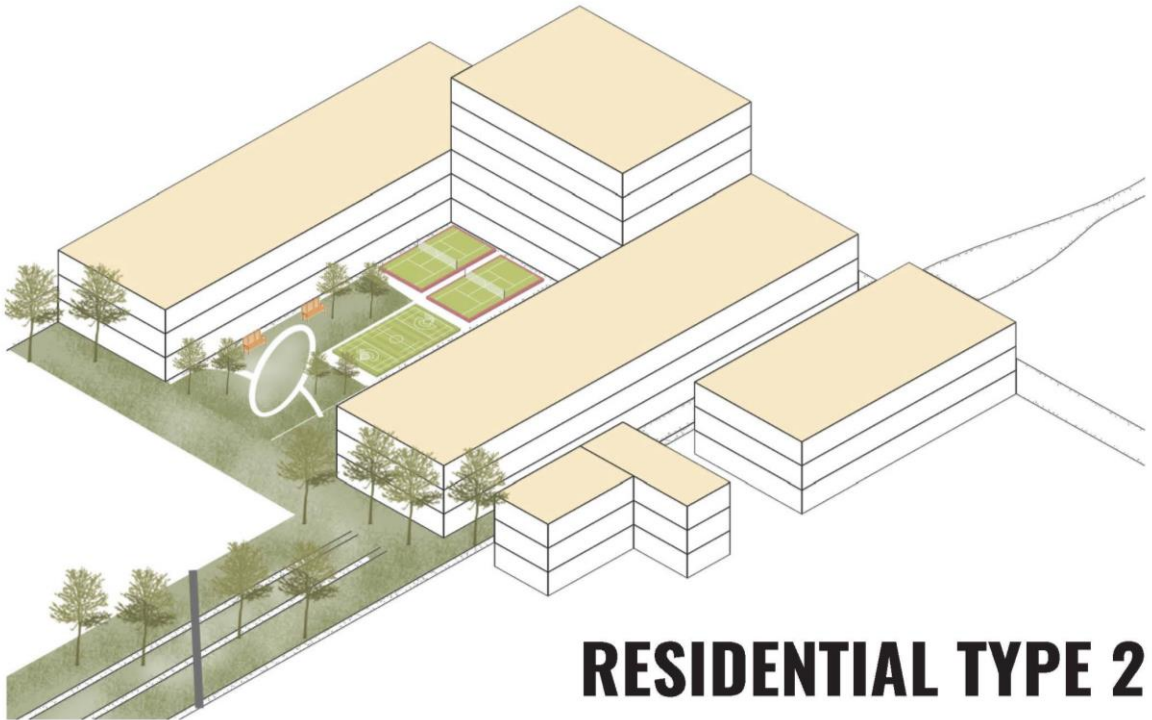




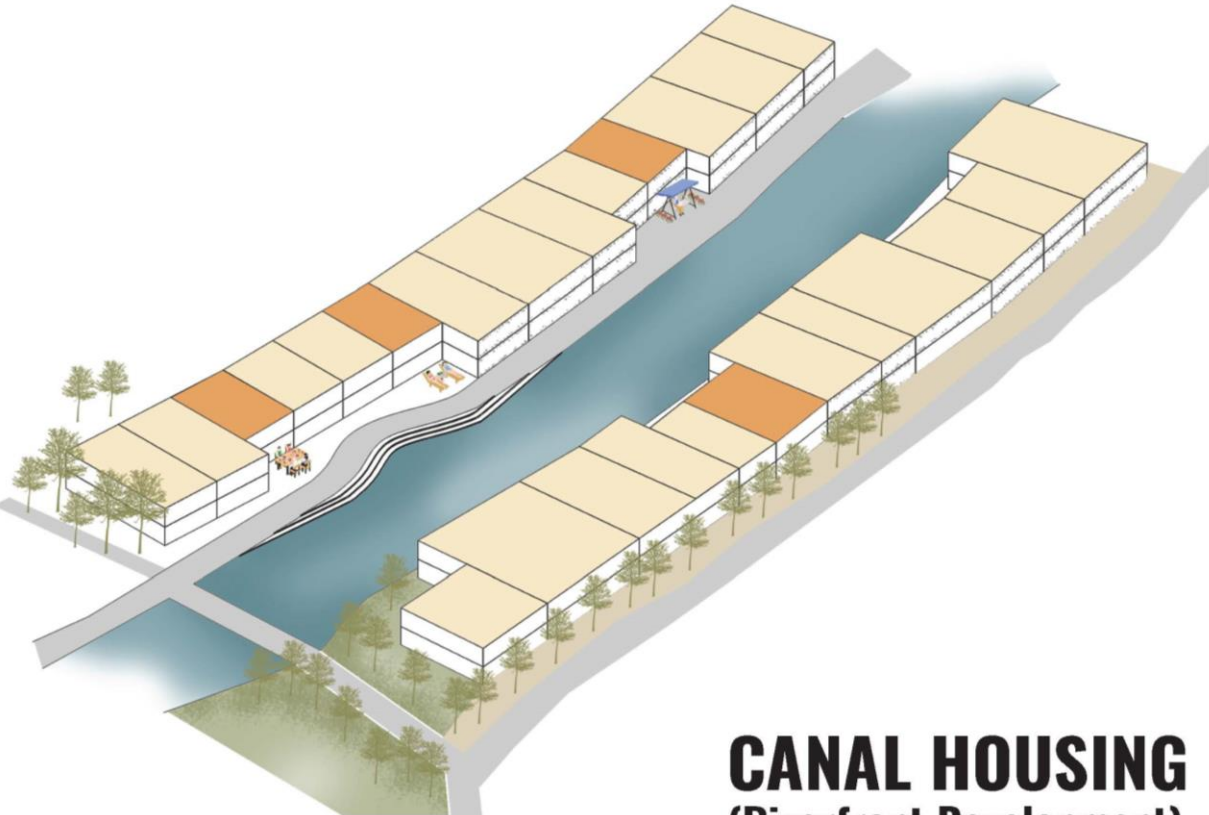
# BUILDING TYPOLOGIES



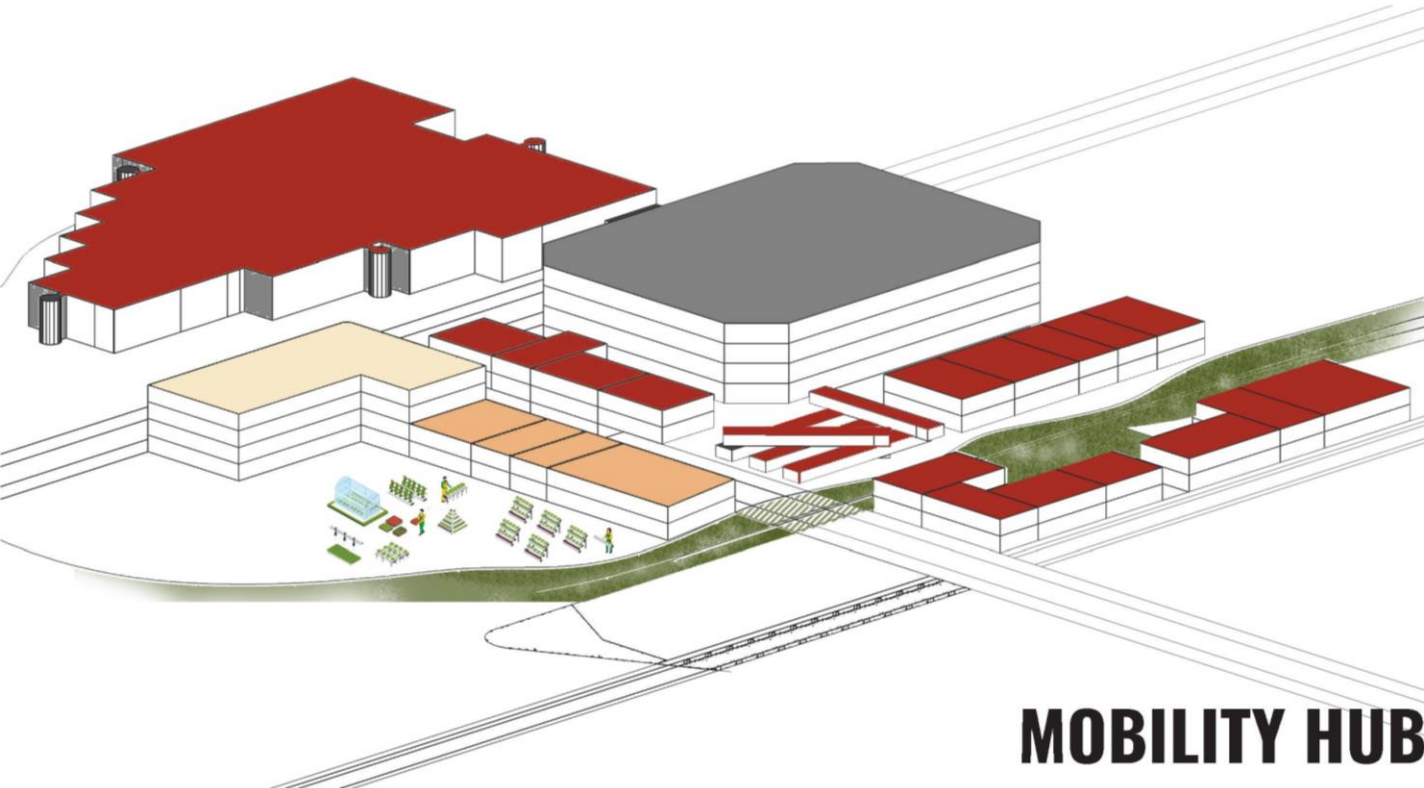
**RESIDENTIAL TYPE 1**  
(Along Green Corridor)



**RESIDENTIAL TYPE 2**



**CANAL HOUSING**  
(Riverfront Development)



**MOBILITY HUB**



# Riverfront Development (Aqua Puncture)





# Food Hub (Socio & Eco Puncture)





# Cultural Hub Around Firestone Building (Socio-Historic Puncture)





# TACTICAL URBANISM | PLACEMAKING ON SITE

‘PUNCTURES OF SOCIAL CHANGE’

**LET'S PARK YYC** aimed to convert underutilized parking lots to temporary installations with uses that engage people of all ages. The exercise showed how spaces can be activated in sustainable and cost-effective ways with materials sourced from the site. The design of the lots is modular, and can be arranged in different ways using the same elements, making it easy to adjust in a variety of spaces. The intervention took place over a period of two days and covered two parking lots, one attached to a gelato place and cafe, and the other an LRT station parking lot. The elements includes giant Jenga, tire seating, tire planters, pinwheels, see-saw, mini foosball table and ring toss. The project redefined a traditionally car-centric area in Calgary into a high dense, unique, pedestrian-focused area.



## MODULARITY

All elements can be arranged for a diverse suite of activities

5<sup>th</sup> and 6<sup>th</sup> June 2022  
10:00 am onwards

# LET'S PARK

 [letspark\\_ycy](https://www.instagram.com/letspark_ycy)

RIGHT FOCUS  
SPOLUMBO'S  
19 St SE  
Barlow Trail SE  
Firestone  
Memorial Drive

 UNIVERSITY OF CALGARY  
 SCHOOL OF ARCHITECTURE PLANNING + LANDSCAPE



## RECYCLED MATERIALS

In the spirit of tactical urbanism, we upcycled common waste materials to give them new life



## OUR PROCESS

Photographs of the process and the fun experience working as a group



## THE OUTREACH

We had multiple visitors that participated and engaged in the activities

