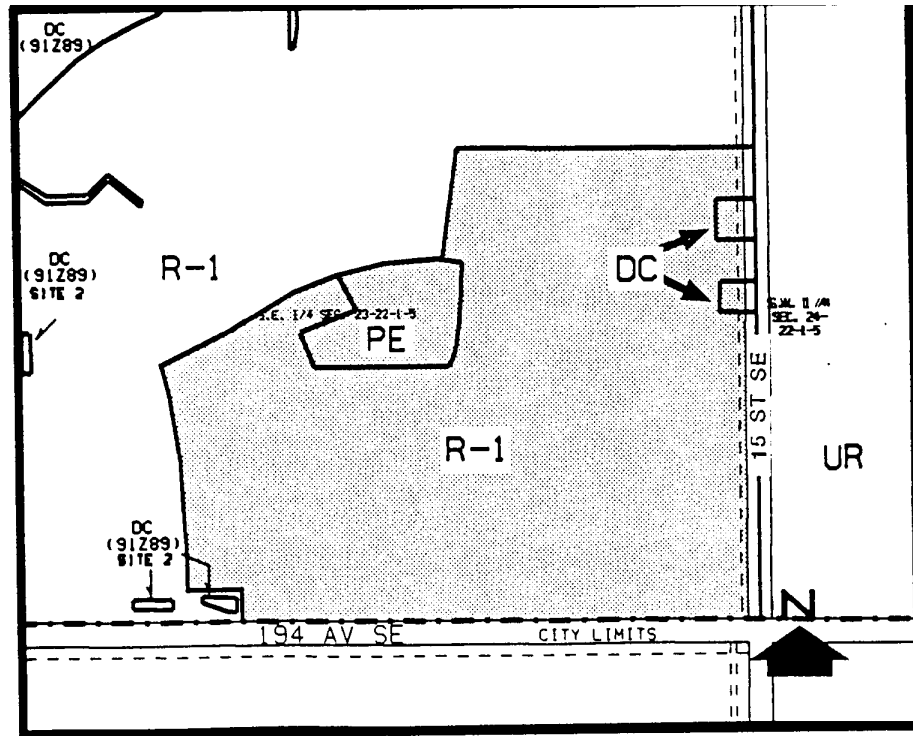


Amendment No. 90/097
Bylaw No. 39Z92
Council Approval: 11 May 1992

SCHEDULE B



1. Land Use

The land use shall be privately owned and maintained ornamental entrance parcels and associated community signage only.

2. Development Guidelines

a. Lot Width

Minimum lot width shall be 6 metres.

b. Development Approvals

The ornamental entrance parcels and associated community identification signage shall be developed to the satisfaction of the Approving Authority in conjunction with the Director of Parks/Recreation.

c. Development Plans

Approval of this application does not constitute approval of a Development Permit. Comprehensive plans, including building design, site layout, exterior finishes and colour, landscaping, parking and accesses shall subsequently be submitted to the Approving Authority as part of a Development Permit Application.