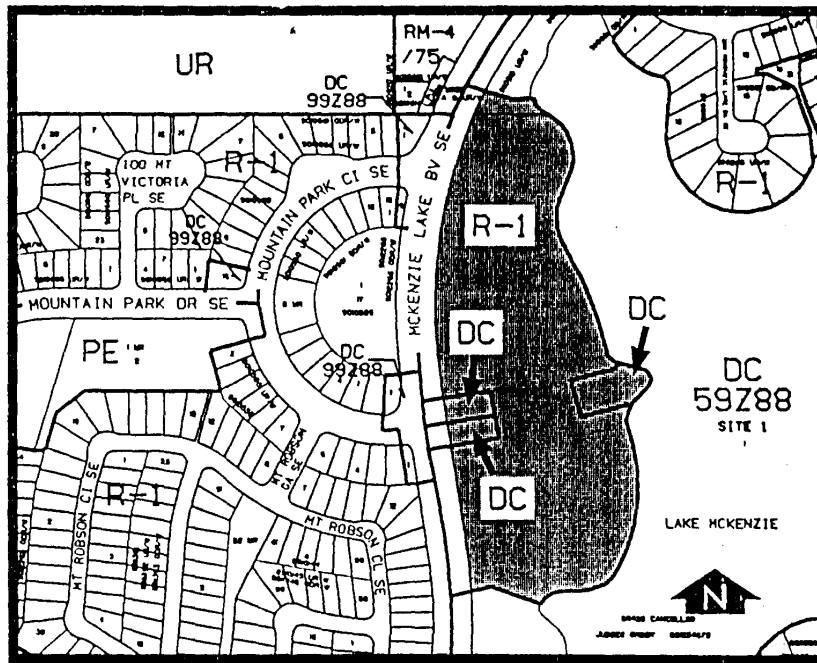


**Amendment No. 94/028**  
**Bylaw No. 76Z94**  
**Council Approval: 18 July 1994**

**SCHEDULE B**



- 1) Land Use  
The land use shall be for privately-owned and maintained ornamental entrance parks and associated community identification signage only.
- 2) Development Guidelines
  - a) The ornamental entrance parks and associated community identification signage shall be developed to the satisfaction of the Approving Authority in consultation with the Director of Parks and Recreation.
  - b) Approval of this application does not constitute approval of a Development Permit. Comprehensive plans, including the site layout, landscaping and signage shall subsequently be submitted to the Approving Authority as part of a Development Permit application.