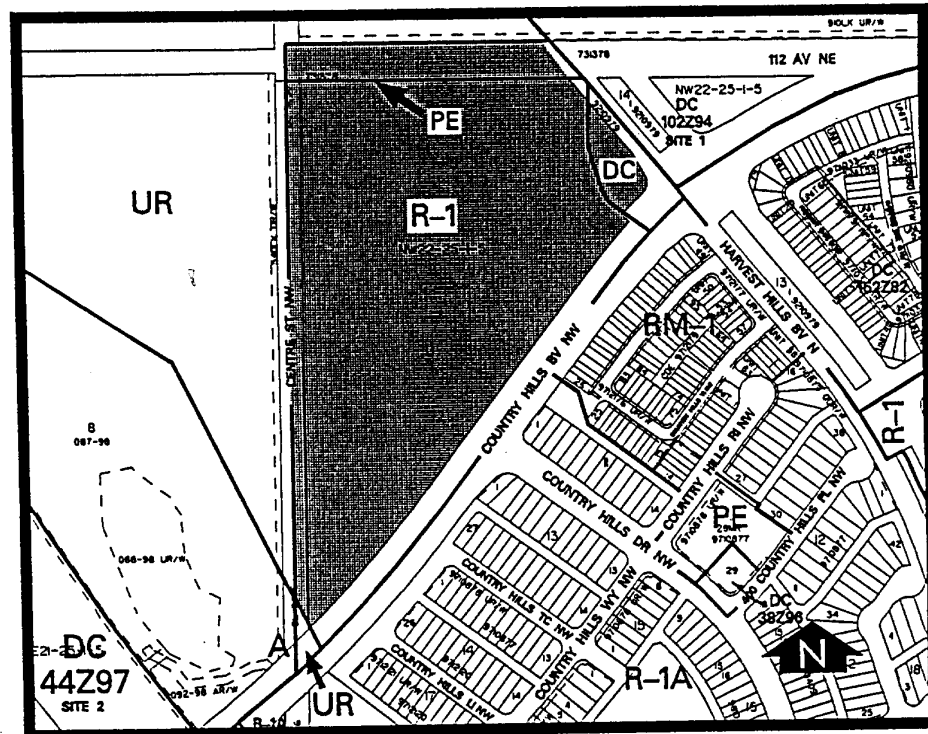


Amendment No. 98/042
Bylaw No. 72Z98
Council Approval: 21 July 1998

SCHEDULE B



1. Land Use

The land use shall be a non-commercial, privately-owned, landscaped entrance feature and community signage only.

2. Development Guidelines

The General Rules for Special Districts contained in Section 48 of Bylaw 2P80 and the Permitted and Discretionary Use Rules of the A Agricultural and Open Space District contained in Section 49 shall apply unless otherwise noted below:

a. Development Plans

Approval of this application does not constitute approval of a site layout, exterior finishes and colour, landscaping, parking and access shall be submitted to the Approving Authority as part of a development permit application.