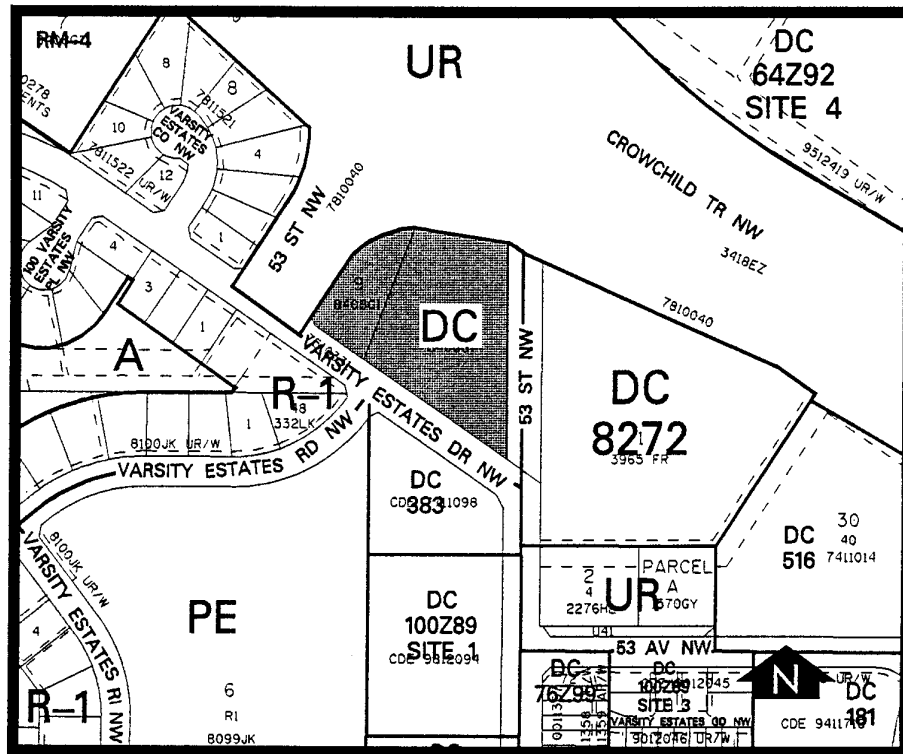


**Amendment No. 2000/068**  
**Bylaw No. 116Z2000**  
**Council Approval: 11 October 2000**

**SCHEDULE B**



1. Land Use

The land use shall be for a neighbourhood shopping centre with the Permitted and Discretionary Uses of the C-1A Local Commercial District of Bylaw 2P80 being the Permitted and Discretionary Uses respectively, excluding the following: automotive services (not containing a grocery store), automotive services (containing a grocery store), billiard parlours, liquor stores, and video stores.

2. Development Guidelines

The General Rules for Commercial Districts contained in Section 33 of Bylaw 2P80 and the Permitted and Discretionary Use Rules of the C-1A Local Commercial District shall apply unless otherwise noted below:

a) Parking

No use shall be approved that creates a parking requirement for the overall site greater than previously approved by the Development Authority.

b) Medical Clinics

There shall be a maximum of two medical clinics with a combined total gross floor area of 150 square metres (1,615 square feet).

c) Development Plans

Approval of this application does not constitute approval of a development permit. Comprehensive plans shall be submitted to the Development Authority as part of a development permit application.