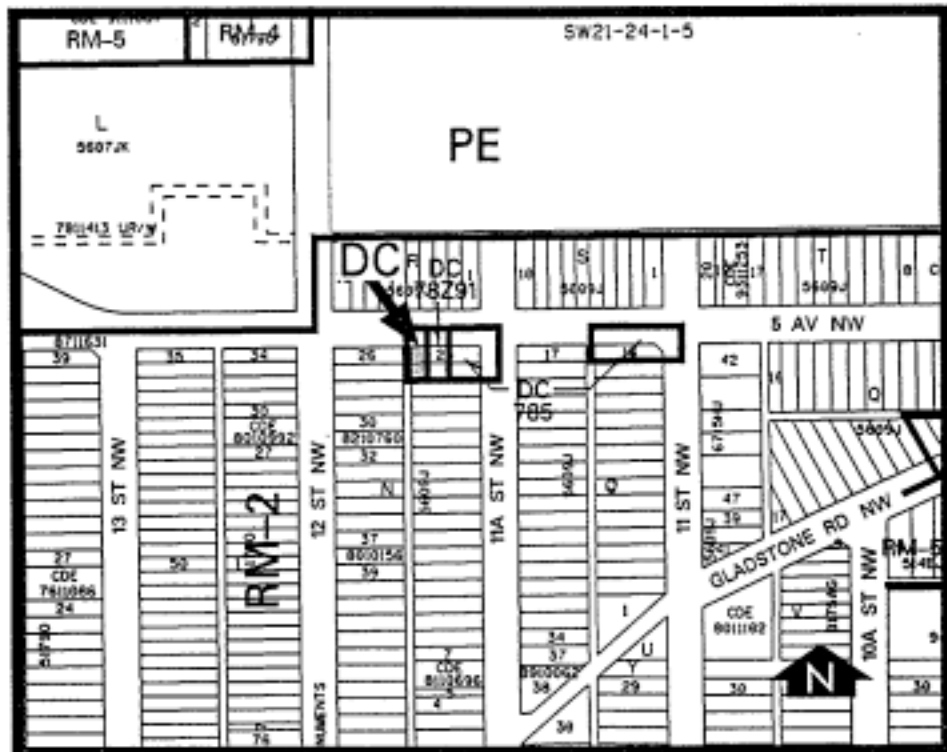


Amendment No. 2000/072
Bylaw No. 137Z2000
Council Approval: 04 December 2000

SCHEDULE B



1. Land Use
 - (a) Permitted Uses
 - Home occupations - Class 1
 - Utilities
 - (b) Discretionary Uses
 - Dwelling units
 - Grocery stores
 - Home occupations - Class 2 (N.P.)
 - Offices
 - Personal service businesses
 - Retail stores
2. Development Guidelines

The General Rules for Commercial Districts contained in Section 33 of Bylaw 2P80 and the Permitted and Discretionary Use Rules of the C-1 Local Commercial District shall apply unless otherwise noted below:

(a) Commercial Development

Only those uses which, in the opinion of the Development Authority, are oriented to local area needs and have a low impact on parking or traffic shall be allowed in this district.

(b) Parking

Parking requirements shall be at the discretion of the Development Authority.

(c) Outside Storage

No outside storage of material, equipment or commercial vehicles shall be allowed on the site.

(d) Development Plans

Approval of this application does not constitute approval of a Development Permit. Comprehensive plans shall be subsequently submitted to the Development Authority as part of a development permit application.