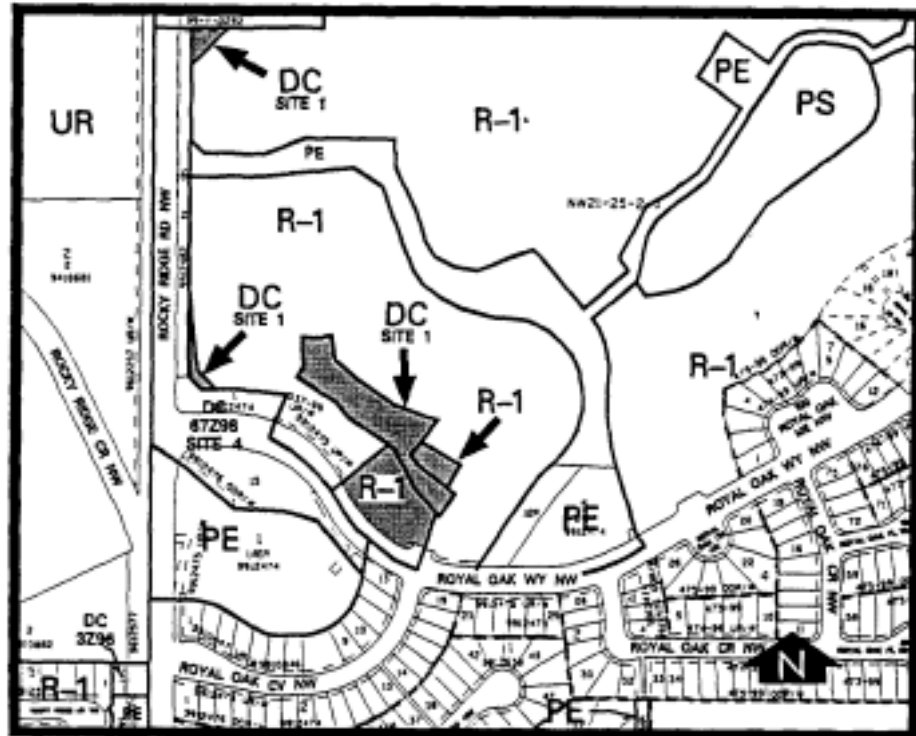


**Amendment No. 99/127**  
**Bylaw No. 37Z2000**  
**Council Approval: 13 March 2000**

**SCHEDULE B**



**Site 1 0.48 ha± (1.19 ac±)**

1. Land Use

The land use shall be non-commercial, privately-owned, landscaped entrance features, linear open spaces and pathways and associated community and related signage only.

2. Development Guidelines

The General Rules for Special Districts contained in Section 48 of Bylaw 2P80, and the Permitted and Discretionary Use Rules of the A Agricultural and Open Space District contained in Section 49 shall apply unless otherwise noted below:

(a) Development Plans

Approval of this application does not constitute approval of a development permit. Comprehensive plans shall subsequently be submitted to the Approving Authority as part of a development permit application.

