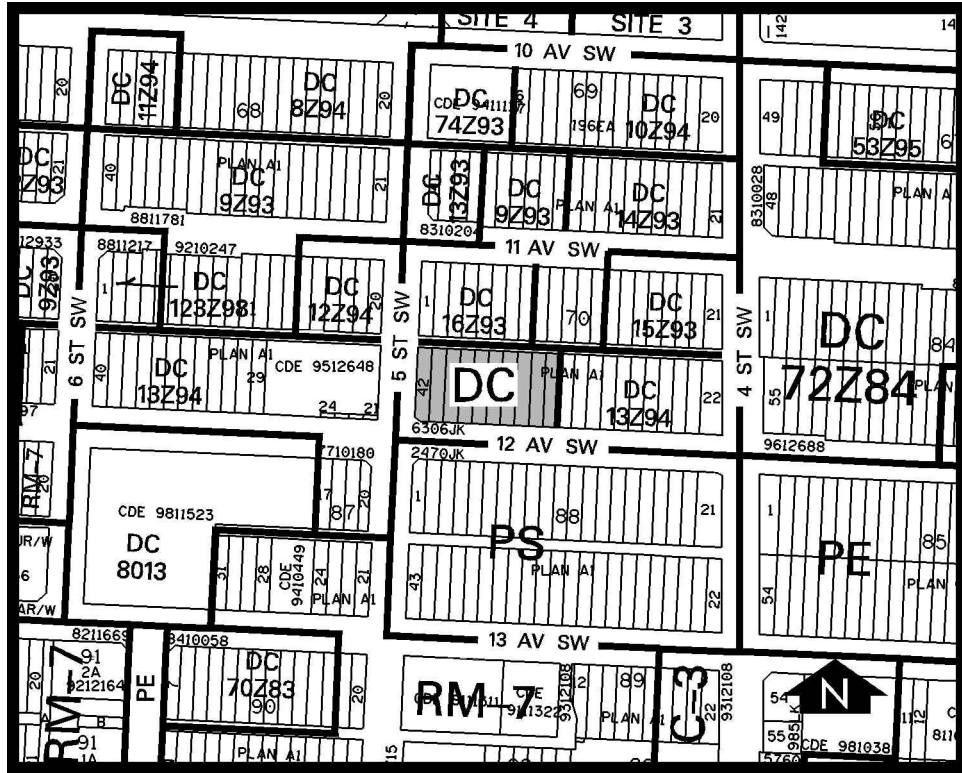


Amendment # 2001/048
Bylaw # 50Z2001
Council Approval: 2001 June 11

SCHEDULE B



DC DIRECT CONTROL DISTRICT

1. Land Use

The Permitted and Discretionary Uses of the CM-2 Downtown Business District of Bylaw 2P80 shall be the Permitted and Discretionary Uses respectively.

2. Development Guidelines

The General Rules for Commercial Districts contained in Section 33 of Bylaw 2P80 shall apply in addition to the following:

- (a) Yards
No minimum requirement.
- (b) Building Height
A maximum of 19 storeys not exceeding 65 metres (213 feet) at any eaveline (not including mechanical penthouse).
- (c) Gross Floor Area
A maximum floor area ratio (F.A.R.) of 8.5:1.
- (d) Landscaped Area
All areas not covered by a building, parking or drive aisles shall be landscaped to the satisfaction of the Development Authority.
- (e) Parking and Loading Regulations
See Section 18 of Bylaw 2P80.
- (f) Right-of-Way Setbacks
See Section 17 of Bylaw 2P80.
- (g) Signs
See Sign Appendix of Bylaw 2P80.
- (h) Outside Storage
No outside storage shall be allowed.