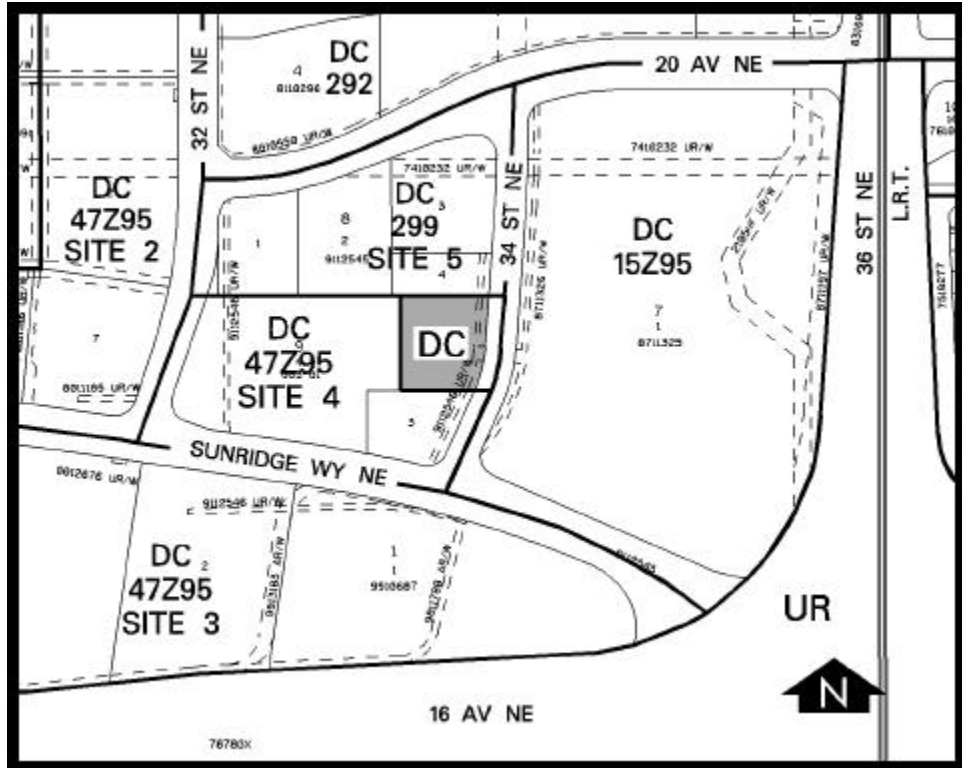


Amendment # 2001/100
Bylaw # 3Z2002
Council Approved: 2002 February 11

SCHEDULE B



DC DIRECT CONTROL DISTRICT

1. Land Use

The Permitted and Discretionary Uses of the C-2(12) General Commercial District shall be the Permitted and Discretionary Uses respectively.

2. Development Guidelines

The General Rules for Commercial Districts contained in Section 33 of Bylaw 2P80 and the Permitted and Discretionary Use Rules of the C-2(12) General Commercial District shall apply unless otherwise noted below.

3. Gross Floor Area

A maximum of 0.677 times the site area.