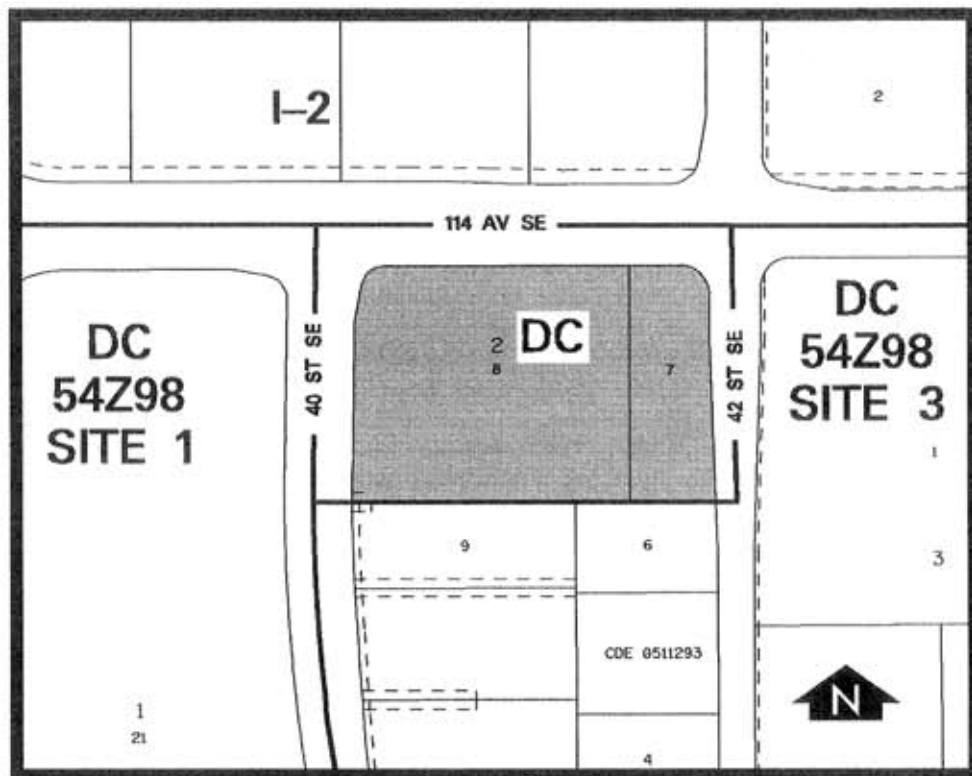


Amendment LOC2005-0092
Bylaw 8Z2006
Council Approved: 2006 January 23

SCHEDULE B



DC DIRECT CONTROL DISTRICT

1. Land Use

The Permitted and Discretionary Uses of the I-2 General Light Industrial District shall be the Permitted and Discretionary Uses respectively, excluding the following uses: child care facilities and private schools, and including the following uses as Discretionary Uses: medical clinics, personal service businesses, retail food stores, retail stores and shopping centres, neighbourhood.

Amendment LOC2005-0092 Bylaw 8Z2006

SCHEDULE B

CONTINUED

2. Development Guidelines

The General Rules for Industrial Districts contained in Section 43 of Bylaw 2P80 shall apply to all uses and the Permitted Use Rules of the I-2 General Light Industrial District shall apply to Permitted Uses and the Discretionary Use Rules of the I-2 General Light Industrial District shall apply to Discretionary Uses.