

**BYLAW NUMBER 281D2016**

**BEING A BYLAW OF THE CITY OF CALGARY  
TO AMEND THE LAND USE BYLAW 1P2007  
(LAND USE AMENDMENT LOC2016-0154)**

\*\*\*\*\*

**WHEREAS** it is desirable to amend the Land Use Bylaw Number 1P2007 to change the land use designation of certain lands within the City of Calgary;

**AND WHEREAS** Council has held a public hearing as required by Section 692 of the *Municipal Government Act*, R.S.A. 2000, c.M-26 as amended;

**NOW, THEREFORE, THE COUNCIL OF THE CITY OF CALGARY ENACTS AS FOLLOWS:**

1. The Land Use Bylaw, being Bylaw 1P2007 of the City of Calgary, is hereby amended by deleting that portion of the Land Use District Map shown as shaded on Schedule "A" to this Bylaw and substituting therefor that portion of the Land Use District Map shown as shaded on Schedule "B" to this Bylaw, including any land use designation, or specific land uses and development guidelines contained in the said Schedule "B".
2. This Bylaw comes into force on the date it is passed.

READ A FIRST TIME THIS 7<sup>TH</sup> DAY OF NOVEMBER, 2016.

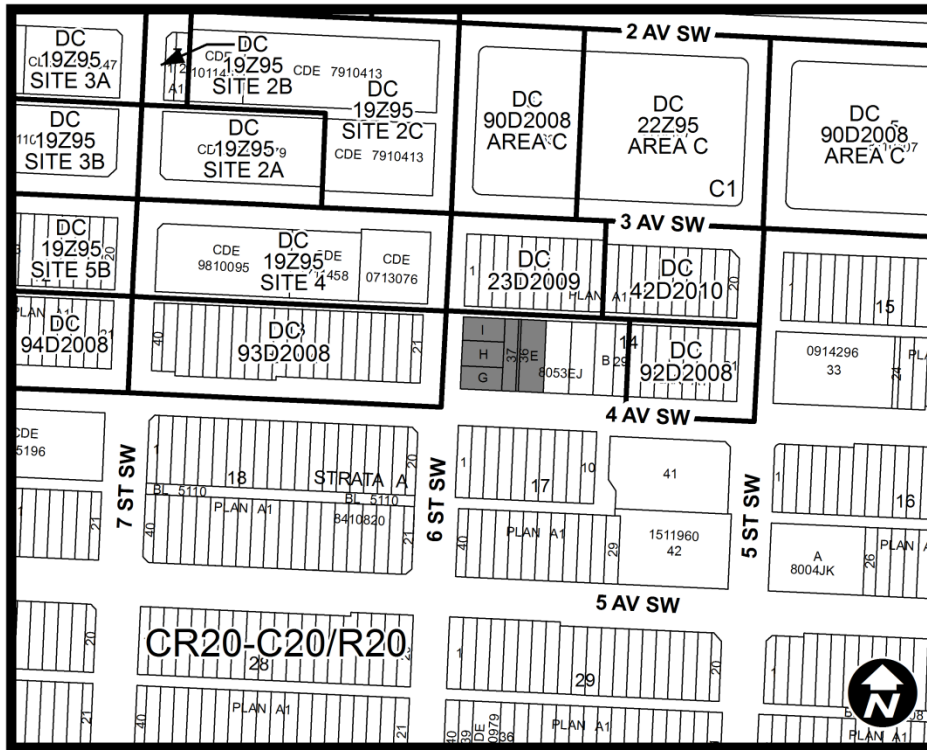
READ A SECOND TIME THIS 7<sup>TH</sup> DAY OF NOVEMBER, 2016.

READ A THIRD TIME THIS 7<sup>TH</sup> DAY OF NOVEMBER, 2016.

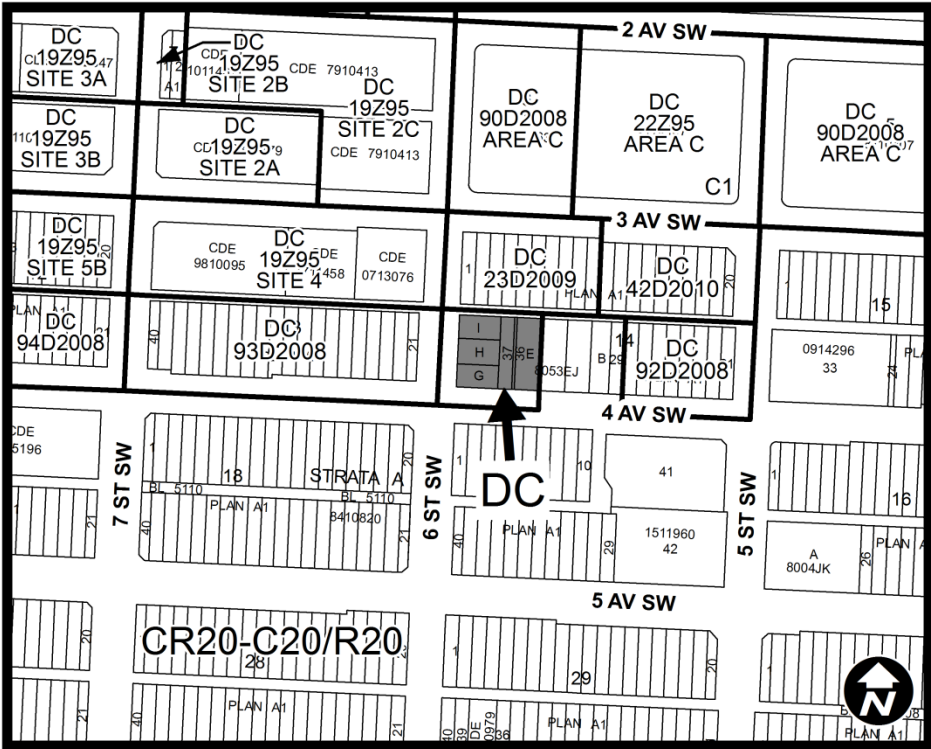
\_\_\_\_\_  
MAYOR  
SIGNED THIS 7<sup>TH</sup> DAY OF NOVEMBER, 2016.

\_\_\_\_\_  
ACTING CITY CLERK  
SIGNED THIS 7<sup>TH</sup> DAY OF NOVEMBER, 2016.

**SCHEDULE A**



**SCHEDULE B**



**DC DIRECT CONTROL DISTRICT**

**Purpose**

- 1 This Direct Control District is intended to:
  - (a) provide for the continuation of the **Parking Lot - Grade (temporary) use** existing on the lands which are the subject of this Direct Control District.

**Compliance with Bylaw 1P2007**

- 2 Unless otherwise specified, the rules and provisions of Parts 1, 2, 3, and 4 of Bylaw 1P2007 apply to this Direct Control District.

**Reference to Bylaw 1P2007**

- 3 Within this Direct Control District, a reference to a section of Bylaw 1P2007 is deemed to be a reference to the section as amended from time to time.

**Permitted Uses**

- 4 The ***permitted uses*** of the Commercial Residential District (CR20-C20/R20) of Bylaw 1P2007 are the ***permitted uses*** in this Direct Control District.

**Discretionary Uses**

- 5 The ***discretionary uses*** of the Commercial Residential District (CR20-C20/R20) of Bylaw 1P2007 are the ***discretionary uses*** in this Direct Control District with the addition of:

- (a) **Parking Lot - Grade (temporary).**

**Bylaw 1P2007 District Rules**

- 6 Unless otherwise specified below, the rules of Commercial Residential District (CR20-C20/R20) of Bylaw 1P2007 apply in this Direct Control District.

**Rules for Parking Lot - Grade (temporary)**

- 7 A ***development permit*** for **Parking Lot - Grade (temporary)** may be issued more than once on a ***parcel***.