

**BYLAW NUMBER 212D2017**

**BEING A BYLAW OF THE CITY OF CALGARY  
TO AMEND THE LAND USE BYLAW 1P2007  
(LAND USE AMENDMENT LOC2017-0006)  
\*\*\*\*\***

**WHEREAS** it is desirable to amend the Land Use Bylaw Number 1P2007 to change the land use designation of certain lands within the City of Calgary;

**AND WHEREAS** Council has held a public hearing as required by Section 692 of the Municipal Government Act, R.S.A. 2000, c.M-26 as amended;

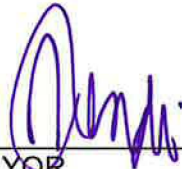
**NOW, THEREFORE, THE COUNCIL OF THE CITY OF CALGARY ENACTS AS FOLLOWS:**

1. The Land Use Bylaw, being Bylaw 1P2007 of the City of Calgary, is hereby amended by deleting that portion of the Land Use District Map shown as shaded on Schedule "A" to this Bylaw and substituting therefor that portion of the Land Use District Map shown as shaded on Schedule "B" to this Bylaw, including any land use designation, or specific land uses and development guidelines contained in the said Schedule "B".
2. This Bylaw comes into force on the date it is passed.

READ A FIRST TIME THIS 3<sup>RD</sup> DAY OF JULY, 2017.

READ A SECOND TIME THIS 3<sup>RD</sup> DAY OF JULY, 2017.

READ A THIRD TIME THIS 3<sup>RD</sup> DAY OF JULY, 2017.



\_\_\_\_\_  
MAYOR

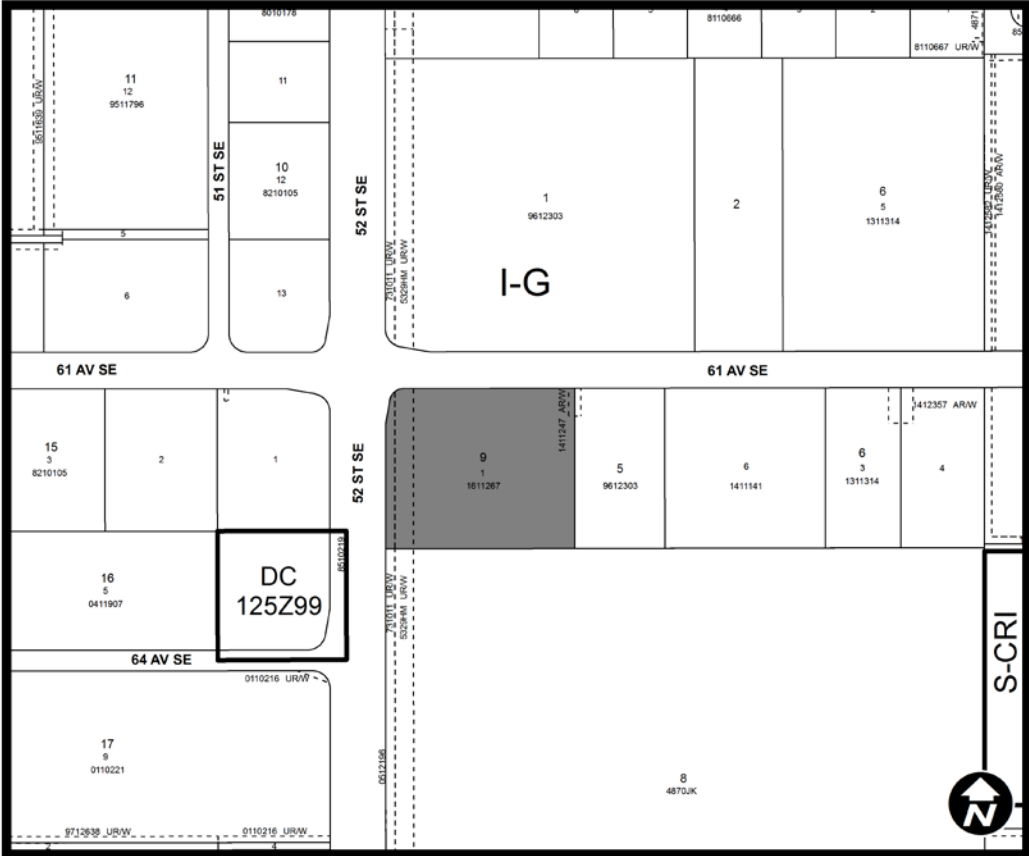
SIGNED THIS 3<sup>RD</sup> DAY OF JULY, 2017.



\_\_\_\_\_  
ACTING CITY CLERK

SIGNED THIS 3<sup>RD</sup> DAY OF JULY, 2017.

**SCHEDULE A**



**SCHEDULE B**



**DC DIRECT CONTROL DISTRICT**

**Purpose**

- 1 This Direct Control District is intended to accommodate:
  - (a) light industrial **uses** that are unlimited in size;
  - (b) small scale commercial **uses** that are compatible with and complement light industrial **uses**;
  - (c) small scale commercial and light industrial **uses** that are located on the perimeter of industrial areas, along **major streets** or **expressways** and that support local industrial employees;

(d) setbacks, screening, landscaping and building design that addresses aesthetic concerns associated with highly visible locations; and

(e) the existing **Storage Yard**.

**Compliance with Bylaw 1P2007**

2 Unless otherwise specified, the rules and provisions of Parts 1, 2, 3 and 4 of Bylaw 1P2007 apply to this Direct Control District.

**Reference to Bylaw 1P2007**

3 Within this Direct Control District, a reference to a section of Bylaw 1P2007 is deemed to be a reference to the section as amended from time to time.

**Permitted Uses**

4 The *permitted uses* of the Industrial – Commercial (I-C) District of Bylaw 1P2007 are the *permitted uses* in this Direct Control District.

**Discretionary Uses**

5 The *discretionary uses* of the Industrial – Commercial (I-C) District of Bylaw 1P2007 are the *discretionary uses* in this Direct Control District with the addition of:

(a) **Storage Yard**.

**Bylaw 1P2007 District Rules**

6 Unless otherwise specified, the rules of the Industrial – Commercial (I-C) District of Bylaw 1P2007 apply in this Direct Control District.