

The data represented in this map are 2-way volumes collected from spring to fall between 2007 & 2012.

The data came from a variety of sources including:

- 6 hour bike turning movements
- 6 hour traffic counts
- 16 hour screenlines

6 hour counts were factored to 16 hours using screenline data

Only segments, within the flow map boundary, where data was available are depicted on this map.

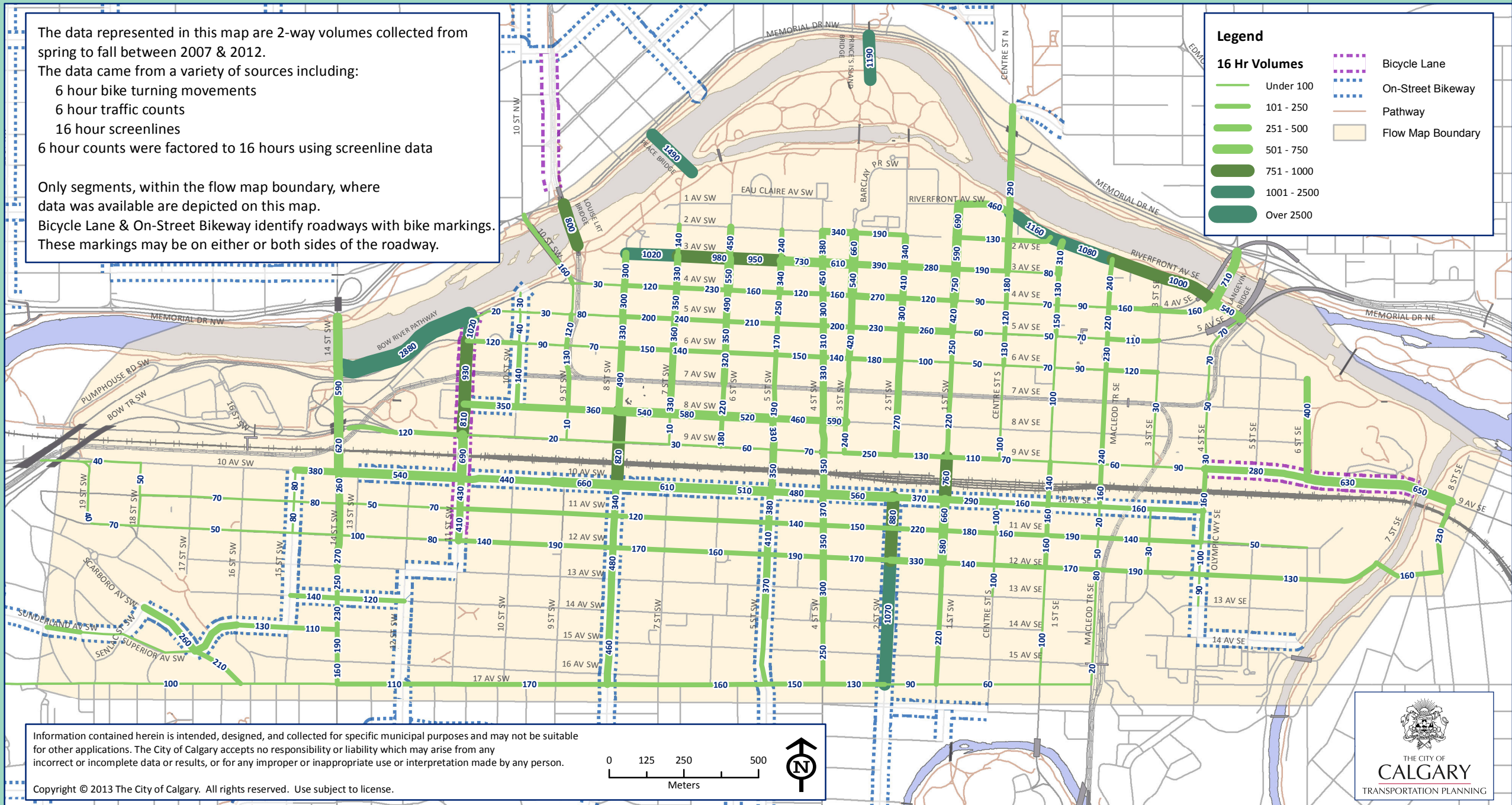
Bicycle Lane & On-Street Bikeway identify roadways with bike markings. These markings may be on either or both sides of the roadway.

Legend

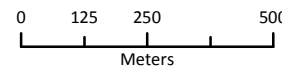
16 Hr Volumes

- Under 100
- 101 - 250
- 251 - 500
- 501 - 750
- 751 - 1000
- 1001 - 2500
- Over 2500

- Bicycle Lane
- On-Street Bikeway
- Pathway
- Flow Map Boundary



Information contained herein is intended, designed, and collected for specific municipal purposes and may not be suitable for other applications. The City of Calgary accepts no responsibility or liability which may arise from any incorrect or incomplete data or results, or for any improper or inappropriate use or interpretation made by any person.



Copyright © 2013 The City of Calgary. All rights reserved. Use subject to license.