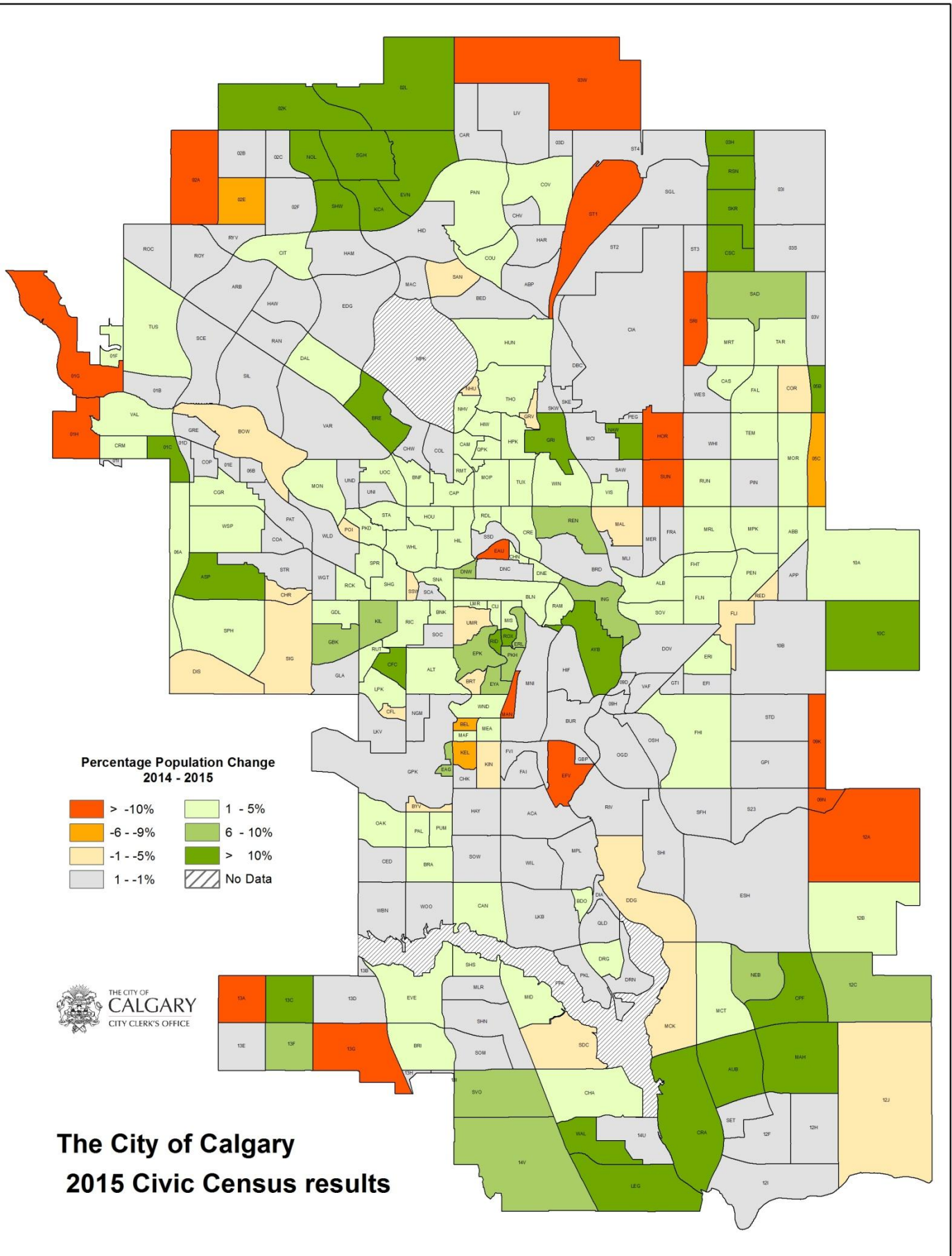


## City Wide Results

### 2015 Civic Census Summary

|                         | April 2015 | April 2014 | Difference |
|-------------------------|------------|------------|------------|
| <b>Population</b>       |            |            |            |
| Total Population        | 1,230,915  | 1,195,194  | 35,721     |
| Natural Increase        | 10,812     | 10,491     | 321        |
| Annexation <sup>i</sup> | 0          | 0          | 0          |
| Net Migration           | 24,909     | 28,017     | -3,108     |
| <b>Housing</b>          |            |            |            |
| Total Units             | 492,623    | 478,223    | 14,400     |
| Occupied                | 462,461    | 453,626    | 8,835      |
| Vacant                  | 12,526     | 9,315      | 3,211      |
| Inactive Unit           | 1,501      | 2,463      | -962       |
| Vacant Renovation       | 1,855      | 2,105      | -250       |
| Under Construction      | 12,998     | 8,873      | 4,125      |
| Non-residential Use     | 1,282      | 1,841      | -559       |
| Vacancy Rate            | 2.64%      | 2.01 %     | -0.63      |
| Owner-occupied Units    | 319,793    | 303,782    | 16,011     |
| Owner-occupancy Rate    | 69.15%     | 68.73 %    | 0.42%      |

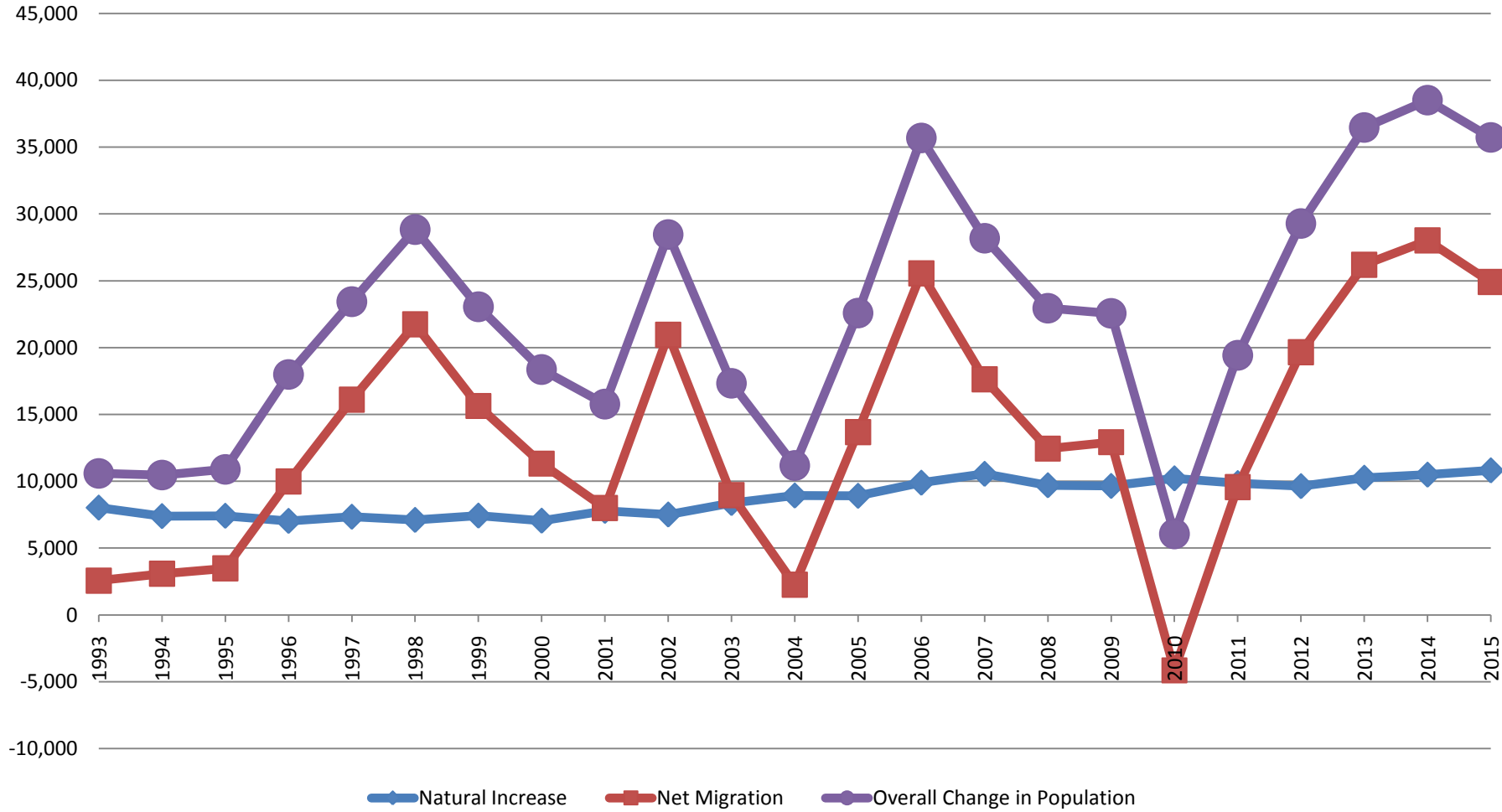


## Components of Population Change 1993-2015

| Year | Natural Increase | Net Migration | Annexation | Overall Change in Population |
|------|------------------|---------------|------------|------------------------------|
| 1993 | 8,022            | 2,564         |            | 10,586                       |
| 1994 | 7,387            | 3,078         |            | 10,465                       |
| 1995 | 7,412            | 3,477         |            | 10,889                       |
| 1996 | 7,028            | 9,979         | 979        | 17,986                       |
| 1997 | 7,339            | 16,100        |            | 23,439                       |
| 1998 | 7,101            | 21,735        |            | 28,836                       |
| 1999 | 7,425            | 15,629        |            | 23,054                       |
| 2000 | 7,044            | 11,317        |            | 18,361                       |
| 2001 | 7,779            | 7,991         |            | 15,770                       |
| 2002 | 7,506            | 20,962        |            | 28,468                       |
| 2003 | 8,363            | 8,965         |            | 17,328                       |
| 2004 | 8,927            | 2,253         |            | 11,180                       |
| 2005 | 8,906            | 13,677        |            | 22,583                       |
| 2006 | 9,887            | 25,557        | 237        | 35,681                       |
| 2007 | 10,552           | 17,631        |            | 28,183                       |
| 2008 | 9,695            | 12,441        | 814        | 22,950                       |
| 2009 | 9,643            | 12,920        |            | 22,563                       |
| 2010 | 10,214           | - 4,154       |            | 6,060                        |
| 2011 | 9,858            | 9,563         | *          | 19,421                       |
| 2012 | 9,631            | 19,658        |            | 29,289                       |
| 2013 | 10,260           | 26,201        |            | 36,461                       |
| 2014 | 10,491           | 28,017        |            | 38,508                       |
| 2015 | 10,812           | 24,909        |            | 35,721                       |

\* Although an annexation occurred in 2011, the annexed lands were not included in the 2011 Census.

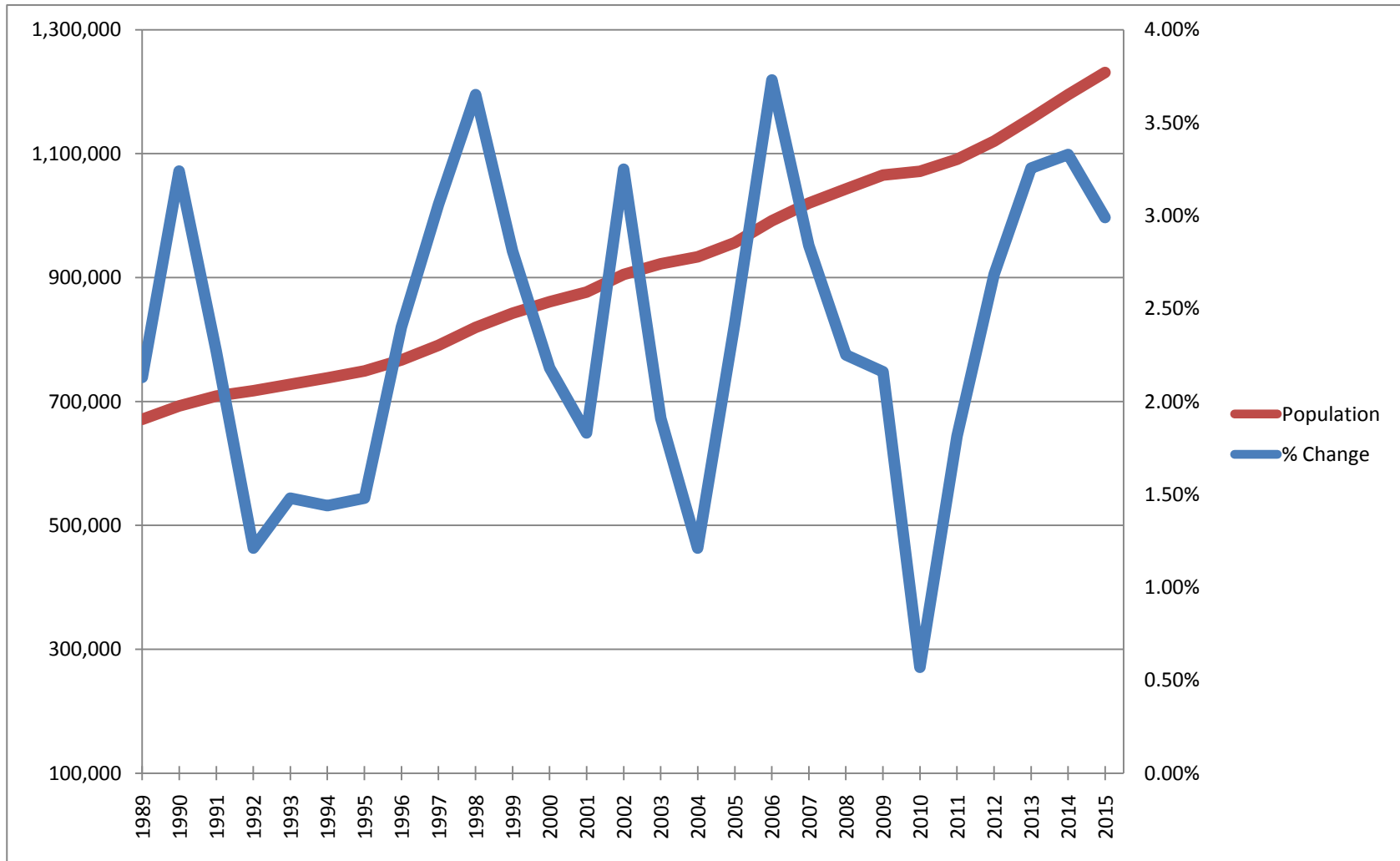
### Components of Population Change 1993 to 2015



## Historical Population Statistics 1989 to 2015

| Year | Population | Difference | % Change |
|------|------------|------------|----------|
| 1989 | 671,138    | 14,020     | 2.13%    |
| 1990 | 692,885    | 21,747     | 3.24%    |
| 1991 | 708,593    | 15,708     | 2.27%    |
| 1992 | 717,133    | 8,540      | 1.21%    |
| 1993 | 727,719    | 10,586     | 1.48%    |
| 1994 | 738,184    | 10,465     | 1.44%    |
| 1995 | 749,073    | 10,889     | 1.48%    |
| 1996 | 767,059    | 17,986     | 2.40%    |
| 1997 | 790,498    | 23,439     | 3.06%    |
| 1998 | 819,334    | 28,836     | 3.65%    |
| 1999 | 842,388    | 23,054     | 2.81%    |
| 2000 | 860,749    | 18,361     | 2.18%    |
| 2001 | 876,519    | 15,770     | 1.83%    |
| 2002 | 904,987    | 28,468     | 3.25%    |
| 2003 | 922,315    | 17,328     | 1.91%    |
| 2004 | 933,495    | 11,180     | 1.21%    |
| 2005 | 956,078    | 22,583     | 2.42%    |
| 2006 | 991,759    | 35,681     | 3.73%    |
| 2007 | 1,019,942  | 28,183     | 2.84%    |
| 2008 | 1,042,892  | 22,950     | 2.25%    |
| 2009 | 1,065,455  | 22,563     | 2.16%    |
| 2010 | 1,071,515  | 6,060      | 0.57%    |
| 2011 | 1,090,936  | 19,421     | 1.81%    |
| 2012 | 1,120,225  | 29,289     | 2.68%    |
| 2013 | 1,156,686  | 36,461     | 3.25%    |
| 2014 | 1,195,194  | 38,508     | 3.33%    |
| 2015 | 1,230,915  | 35,721     | 2.99%    |

## Population and Percent Change 1989 – 2015



## Historical Dwelling Statistics 1999 to 2015

| Year | Dwelling Count | Difference | % Change |
|------|----------------|------------|----------|
| 1999 | 331,159        | 10,252     | 3.19%    |
| 2000 | 340,257        | 9,098      | 2.75%    |
| 2001 | 348,902        | 8,645      | 2.54%    |
| 2002 | 360,129        | 11,227     | 3.22%    |
| 2003 | 371,756        | 11,627     | 3.23%    |
| 2004 | 383,701        | 11,945     | 3.21%    |
| 2005 | 395,779        | 12,078     | 3.15%    |
| 2006 | 408,543        | 12,764     | 3.23%    |
| 2007 | 420,311        | 11,768     | 2.88%    |
| 2008 | 432,997        | 12,686     | 3.02%    |
| 2009 | 438,663        | 5,666      | 1.31%    |
| 2010 | 445,455        | 6,792      | 1.57%    |
| 2011 | 450,952        | 5,497      | 1.25%    |
| 2012 | 459,339        | 8,387      | 1.88%    |
| 2013 | 468,358        | 9,019      | 1.96%    |
| 2014 | 478,223        | 9,865      | 2.06%    |
| 2015 | 492,623        | 14,400     | 2.92%    |

## Dwelling Counts and Percent Change 2000 to 2015

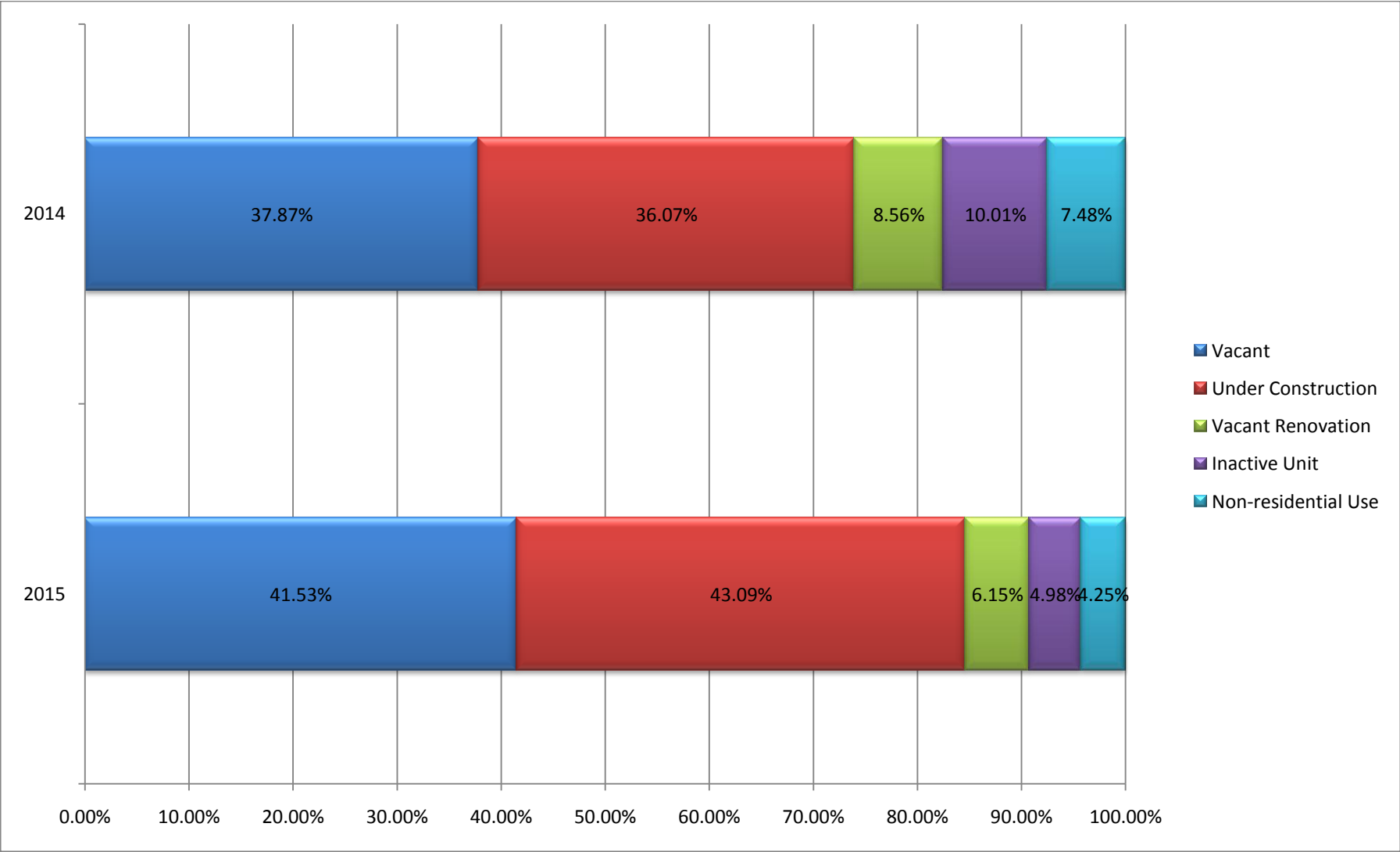




## Dwelling and Population Percent Change 2000 to 2015



### Percentage of Unoccupied Units by Type



### 5 Year Population Increase Breakdown

| Year | Total Increase | Natural Increase | Net Migration |
|------|----------------|------------------|---------------|
| 2011 | 19,421         | 9,858            | 9,563         |
| 2012 | 29,289         | 9,631            | 19,658        |
| 2013 | 36,461         | 10,260           | 26,201        |
| 2014 | 38,508         | 10,491           | 28,017        |
| 2015 | 35,721         | 10,812           | 24,909        |

### 5 Year Population Comparison

| Year | Resident Count | Difference | % Change |
|------|----------------|------------|----------|
| 2011 | 1,090,936      | 19,421     | 1.81%    |
| 2012 | 1,120,225      | 29,289     | 2.68%    |
| 2013 | 1,156,686      | 36,461     | 3.25%    |
| 2014 | 1,195,194      | 38,508     | 3.33%    |
| 2015 | 1,230,915      | 35,721     | 2.99%    |

## Dwellings Summary

|                                    | <b>2015</b> | <b>2014</b> | <b>Difference</b> |
|------------------------------------|-------------|-------------|-------------------|
| Number of Dwellings                | 492,623     | 478,223     | 14,400            |
| Increase/(Decrease)                | 14,400      | 9,865       | 4,535             |
| Number of Vacant Dwellings         | 12,526      | 9,315       | 3,211             |
| Vacancy Rate                       | 2.64%       | 2.01%       | -0.63             |
| Number Under Construction          | 12,998      | 8,873       | 4,125             |
| Number of Owner Occupied Dwellings | 319,793     | 303,782     | 16,011            |
| % Owner Occupied Dwellings         | 69.15%      | 68.73%      | 0.42%             |

## Comparative Community Results

### 20 Largest Communities by Population

| Position in 2015 | Community Name   | Ward | Population | Position in 2014 |
|------------------|------------------|------|------------|------------------|
| 1                | PANORAMA HILLS   | 3    | 25,993     | 1                |
| 2                | BELTLINE         | 8    | 21,939     | 3                |
| 3                | EVERGREEN        | 13   | 21,700     | 2                |
| 4                | TUSCANY          | 1    | 19,737     | 4                |
| 5                | TARADALE         | 3    | 19,223     | 5                |
| 6                | SADDLE RIDGE     | 3    | 18,994     | 6                |
| 7                | MCKENZIE TOWNE   | 12   | 18,029     | 7                |
| 8                | COVENTRY HILLS   | 3    | 17,546     | 8                |
| 9                | CRANSTON         | 12   | 17,185     | 10               |
| 10               | EDGEMONT         | 4    | 15,986     | 9                |
| 11               | MARTINDALE       | 5    | 15,055     | 11               |
| 12               | MCKENZIE LAKE    | 12   | 14,008     | 12               |
| 13               | HUNTINGTON HILLS | 4    | 13,781     | 14               |
| 14               | SIGNAL HILL      | 6    | 13,613     | 13               |
| 15               | AUBURN BAY       | 12   | 13,191     | 26               |
| 16               | BRIDLEWOOD       | 13   | 13,045     | 16               |
| 17               | CHAPARRAL        | 12   | 13,000     | 18               |
| 18               | EVANSTON         | 2    | 12,883     | 37               |
| 19               | DOUGLASDALE/GLEN | 12   | 12,714     | 15               |
| 20               | VARSITY          | 1    | 12,669     | 17               |