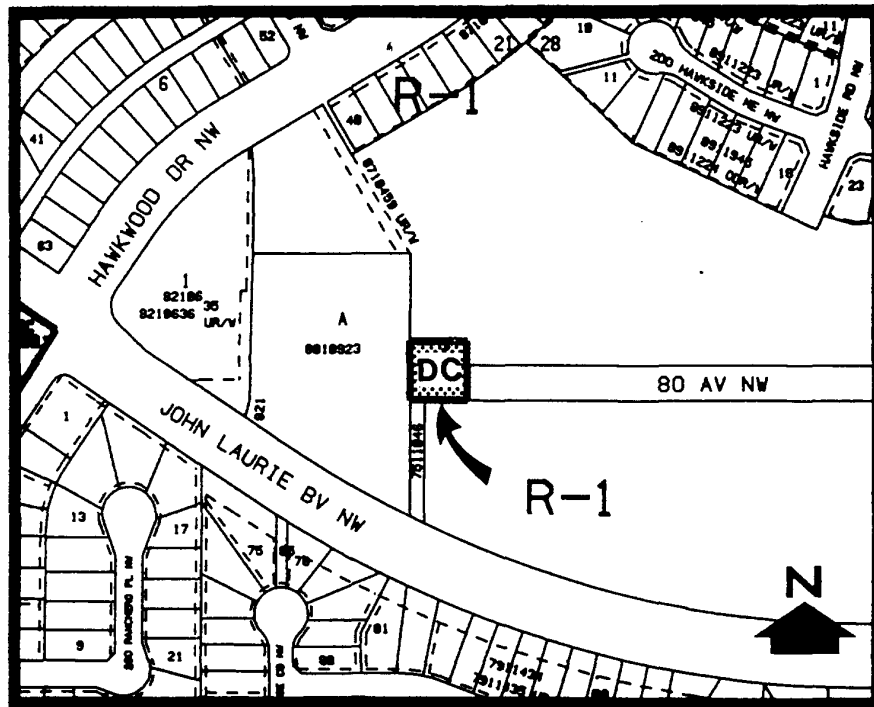


Amendment No. 90/062
Bylaw No. 69Z90
Council Approval: 16 July 1990

SCHEDULE B



1. Land Use

The land use shall be for a private recreational vehicle storage lot.

2. Development Guidelines

The General Rules for Residential Districts contained in Section 20 of By-law 2P80 and the Permitted and Discretionary Use Rules of the R-1 (Residential Single-Detached District) shall apply unless otherwise noted below.

a) Fencing

The site will be screened by a uniform fence of high quality material requiring minimum maintenance.

b) **Ground Surface**
The site will be covered with a hard surface to reduce dust, to the satisfaction of the Development Officer.

c) **Landscaping**

That the landscaping be provided to the satisfaction of the Approving Authority on the residential interface.