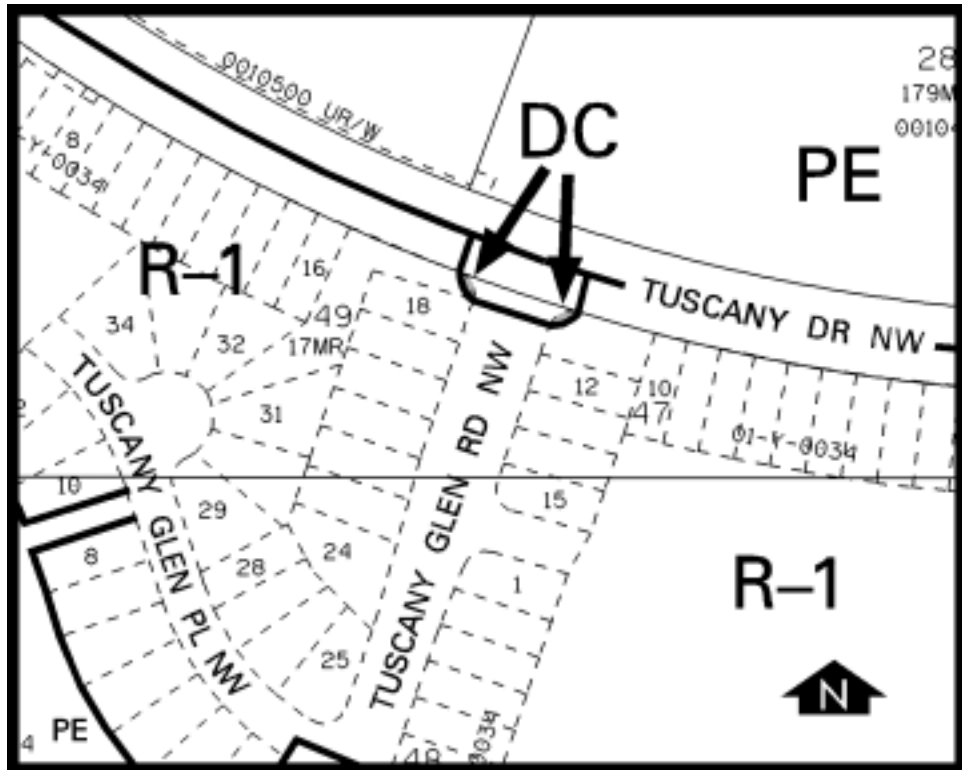


Amendment # 2001/069
Bylaw # 104Z2001
Council Approval: 2001 October 01

SCHEDULE B



DC DIRECT CONTROL DISTRICT

1. Land Use

The land use shall be for ornamental entrance parks and community identification signage as Discretionary Uses.

2. Development Guidelines

The General Rules for Special Districts contained in Section 48 of Bylaw 2P80 and the Permitted and Discretionary Use Rules of the A Agricultural and Open Space District shall apply.