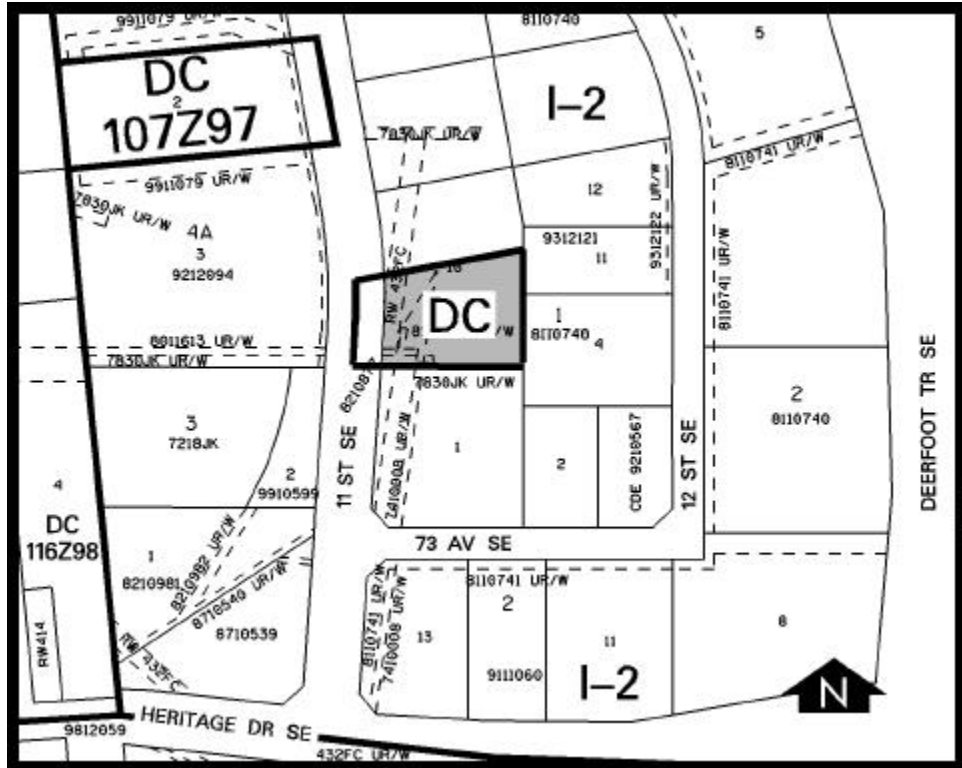


Amendment # 2001/073
Bylaw # 86Z2001
Council Approval: 2001 September 10

SCHEDULE B



DC DIRECT CONTROL DISTRICT

1. Land Use

The Permitted and Discretionary Uses of the I-2 General Light Industrial District of Bylaw 2P80 shall be the Permitted and Discretionary Uses respectively with the additional Discretionary Use of retail stores.

2. Development Guidelines

The General Rules for Industrial Districts contained in Section 43 of Bylaw 2P80 and the Permitted and Discretionary Use Rules of the I-2 General Light Industrial District shall apply.