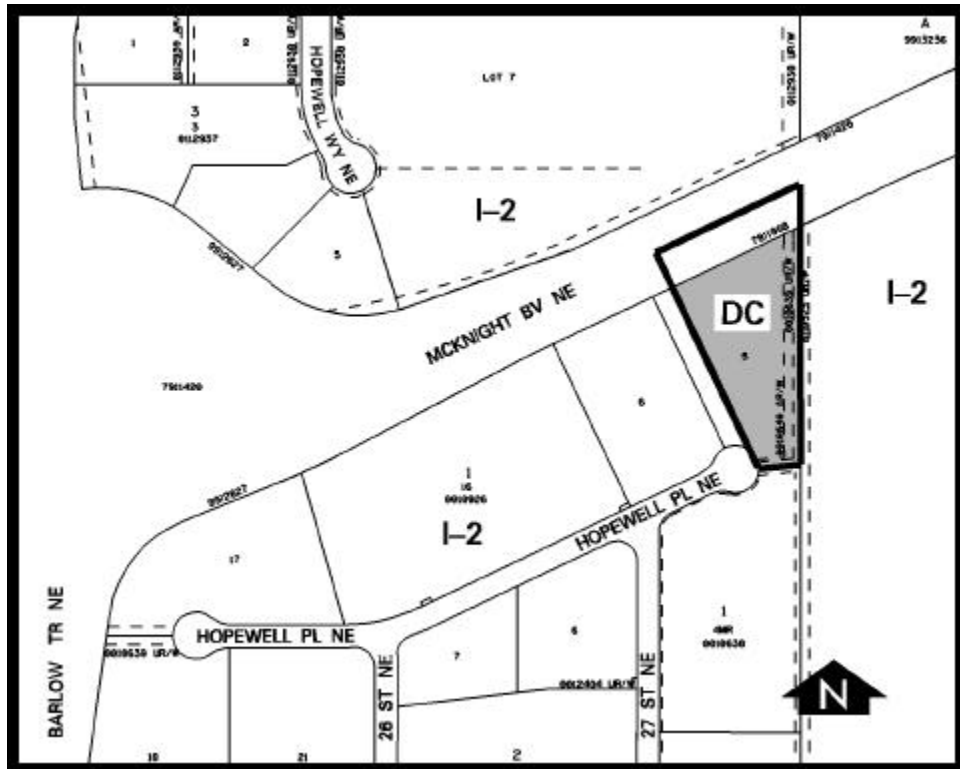


Amendment # LOC2002-0068
Bylaw # 7Z2003
Council Approval: January 20 2003

SCHEDULE B



DC DIRECT CONTROL DISTRICT

1. Land Use

The land use shall be the Permitted and Discretionary Uses of the I-2 General Light Industrial District respectively, with the additional Discretionary Use of industrial/farm retail store.

For the purpose of this Bylaw, "industrial/farm retail store" means the use of a building or a portion thereof for the sale of a range of industrial, automotive and farm goods which are not limited to, but shall include, all of the following: farm, automotive, industrial, hydraulic and electrical parts, tools, equipment and accessories.

2. Development Guidelines

The General Rules for Industrial Districts contained in Section 43 of Bylaw 2P80 and the Permitted and Discretionary Use Rules of the I-2 General Light Industrial District shall apply unless otherwise noted below:

- (i) A maximum of one industrial/farm retail store shall be allowed on the site.