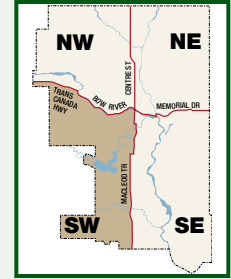
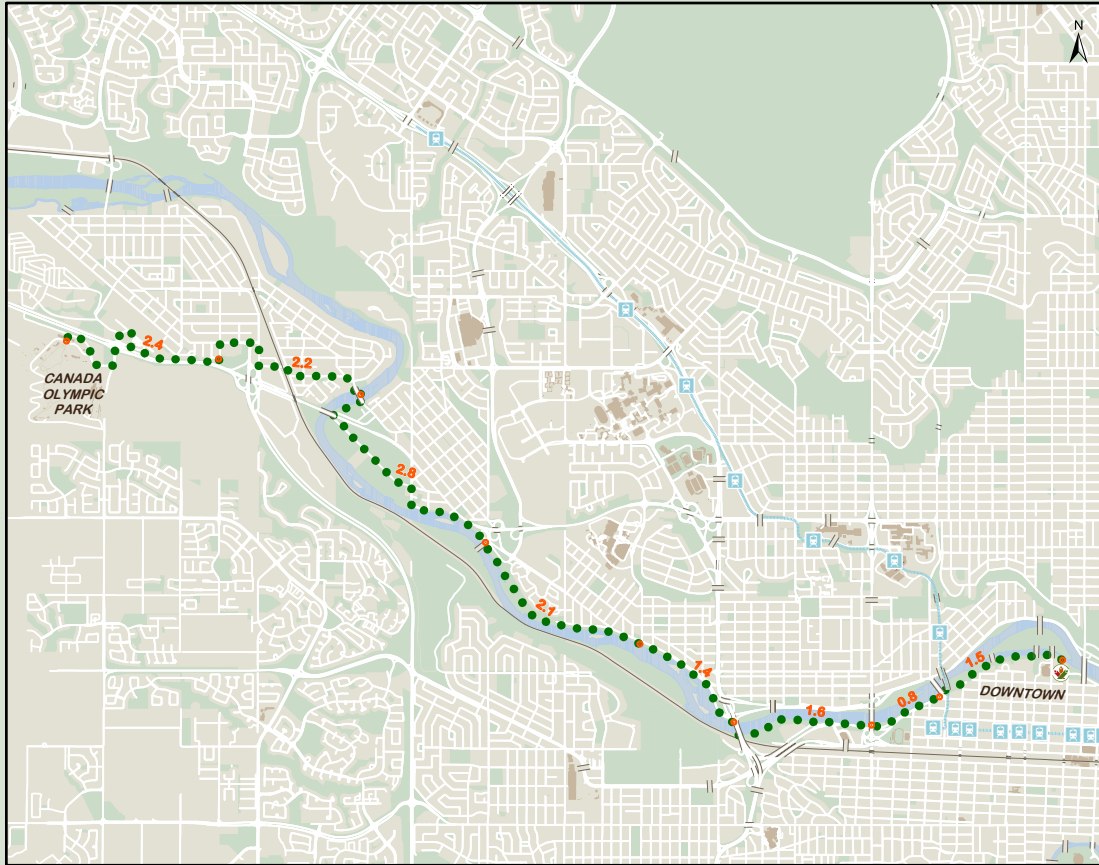


Canada Olympic Park (COP)

88 Canada Olympic Road N.W.



Details:

88 Canada Olympic Road S.W.
Phone: 1-403-247-5452
www.canadaolympicpark.ca

Recommended mode: cycling.

Distance:

•15.5 km from
downtown – one way.

Features/amenities:

- Canadian Olympic Hall of Fame.
- Downhill and cross-country cycling, repair and rental facilities.
- Mini-golf.
- Climbing wall.
- Beach volleyball.
- Lounge, fine dining and souvenir shops.
- Eurobungee trampoline.
- Bobsled and luge tracks.

Alternative access via transit:

If you wish to do part of your trip by transit, you can reach Canada Olympic Park by Calgary Transit bus route 408 leaving from the Brentwood CTrain station. (Note: bicycles may only be taken on buses equipped with proper transportation racks and are restricted on CTrains during peak hours. Contact Calgary Transit for availability details.)

Fees:

Grounds Admission:
• Lift passes and bike rental prices vary – call for details.

Hours: call for more information.

Nearby attractions/facilities:

- Bowness Park.
- Shouldice Park.
- KOA Calgary West Campground.



Day Lodge at C.O.P.

Canada's centre of sports excellence



Front slope and quad chair

Description:

Calgary's winter playground has summer fun too. Canada Olympic Park (COP) may have been developed in 1988 for the Olympic Winter Games but it also features a variety of exciting summer sporting facilities including downhill, cross country, freeride and dirt jump cycling facilities.

Worth noting:

Canada Olympic Park played host to the International Cycling Union's 2004 World Cup downhill competition.

Directions:

Start at the Eau Claire Trans Canada Trail Pavilion. Cycle west on the Bow River pathway (with the river on your right). Cross the river on the pedestrian bridge under Crowchild Trail.

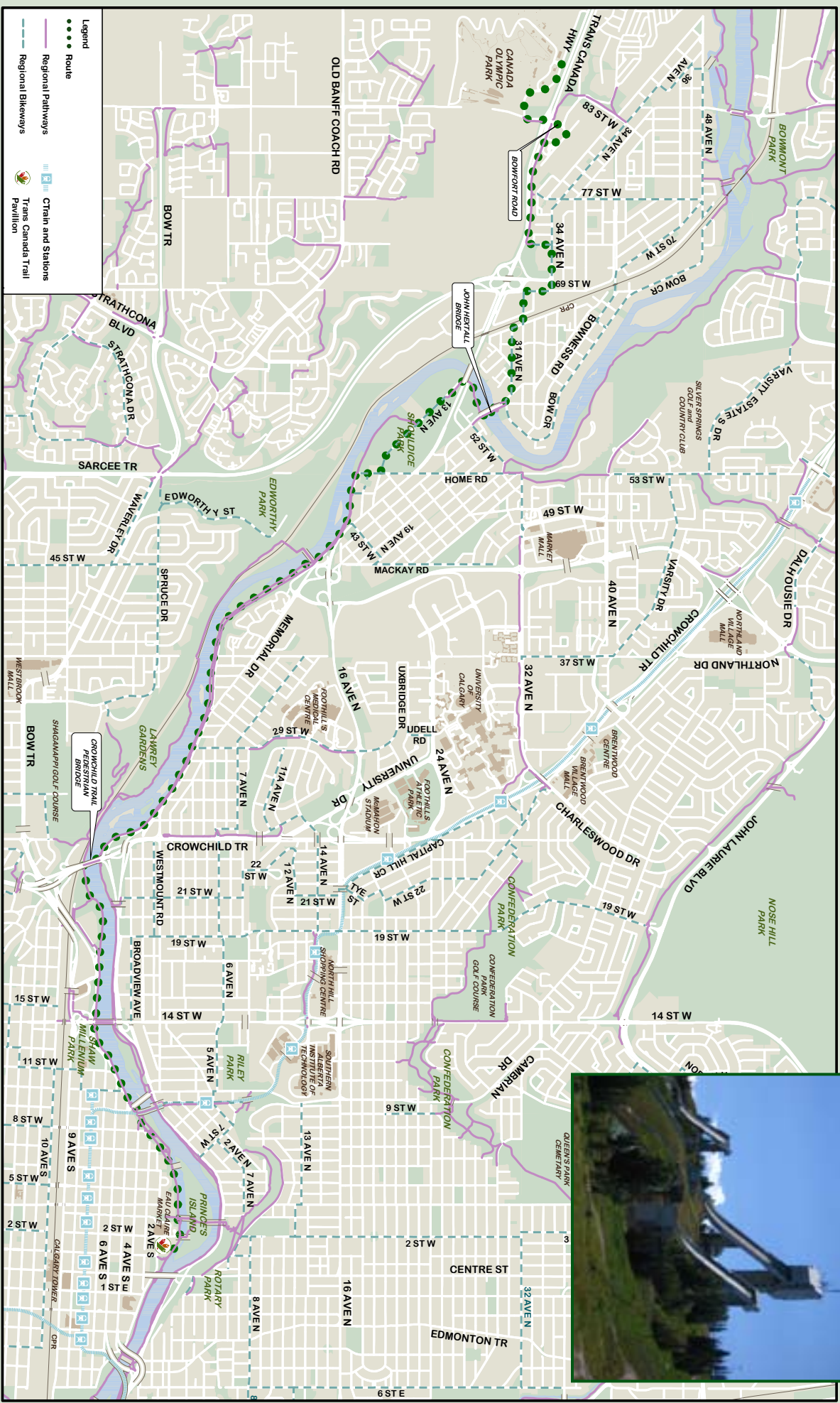
Turn left and continue west along the pathway. Proceed until the pathway twins and then travel ahead on Montgomery Boulevard N.W. Follow the road as it bends to the right and then turn left onto 13th Avenue N.W. and travel past the baseball diamonds. Cycle under the Bowness Road bridge and proceed through Shouldice Park.

Cross the river on the wood-surfaced John Hextall Bridge. Turn right immediately onto the pathway back underneath both bridges and follow the path onto Bowwood Drive N.W. Shortly after, turn left onto 31st Avenue N.W. and proceed west until you come to a T-intersection. Turn right onto 67th Street N.W. and then left onto 32nd Avenue N.W. Cross the railroad tracks and turn right onto 69th Street N.W. Turn left at the 34th Avenue N.W. intersection and travel west before turning left onto 73rd Street N.W. Rejoin the pathway and travel west up a slight hill until you reach Bowfort Road. Then turn left to cross the Trans Canada Highway and follow Canada Olympic Drive to the day lodge.

Canada Olympic Park (GOP)

88 Canada Olympic Road N.W.

Ski Jump Tower



www.calgary.ca | call 3-1-1

