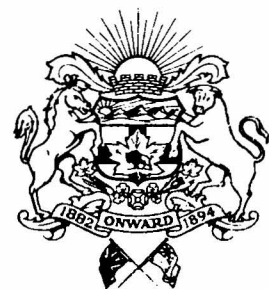


Annual Report

1965

PARKS RECREATION ZOO AND CEMETERIES

The City of Calgary



PARKS, RECREATION and CEMETERIES DEPARTMENT

ANNUAL REPORT 1965

<u>Contents</u>	<u>Page</u>
Superintendent's Report	1
Administration	5
Golf Courses, Camp Ground	6
Calgary Zoo, Tropical Aviary	7
Heritage Park	8
Planetarium, Recreation Facilities	9
Ice Facilities, Stadia & Athletic Fields	10
Swimming Pools	11
Playgrounds, Day Camps, Special Events	13
Sailing School, Winter Centres	14
Parks Operations	15
Park Services	19
Cemeteries	20
Greenhouses, Nursery	21
Weed Control	22
Expenditures and Revenues	23

His Worship the Mayor
Members of City Council
Board of City Commissioners.

Dear Sirs:

The following is a report of the highlights of the Parks and Recreation operations of the City of Calgary for the year 1965.

In the detailed reports which follow, it will be noted that old park areas such as Bowness were up-dated and improved and bulldozers began to contour the land at the site of the new Confederation Park.



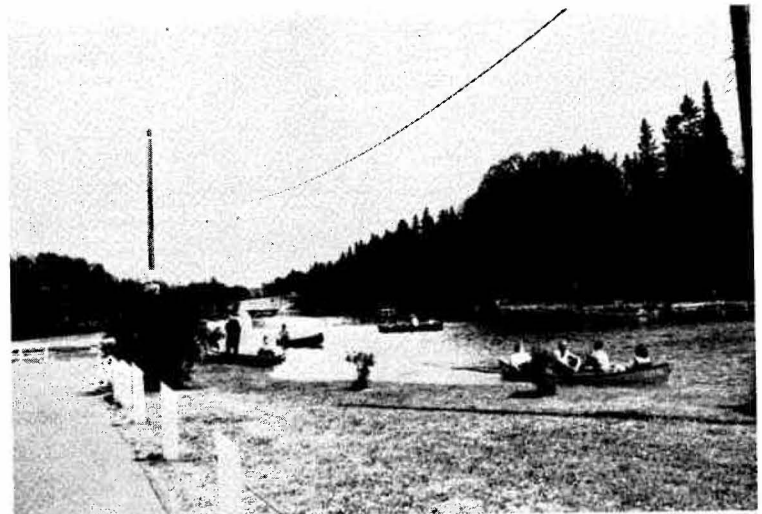
Trees & Shrubs Planted,
- 16,679.

Bedding Out Plants,
- 199,240.

Park Acreage - 3850

Value of Park and
Recreation Facilities
and Buildings.

Approximately
\$5,430,000.00





Operating Budget

\$ 2,545,677.06

Permanent Staff

186

Temporary Staff

759

The routine work of the Department which is directed towards our basic aim of beautifying the environment of Calgary and providing wholesome outlets for the leisure time activities of all age groups of Calgarians, was carried out with "service" and "efficiency" being the objective of management.

Swimming Pool

Attendance - 539,630.

Attendance at

Summer Recreation

Programs - 57,912.

Attendance at

Winter Recreation

Programs - 80,074.



This year 1965 was marked with a number of spectacular capital projects, the second indoor pool was completed, and enclosure of two existing pools was commenced. Foundations were laid for the Renfrew Arena and the Centennial Planetarium and the Moyie was launched at Heritage Park. The 1965 capital appropriations were \$1,549,231.26, in addition both the Heritage Park Society and the Calgary Zoological Society developed important capital projects.

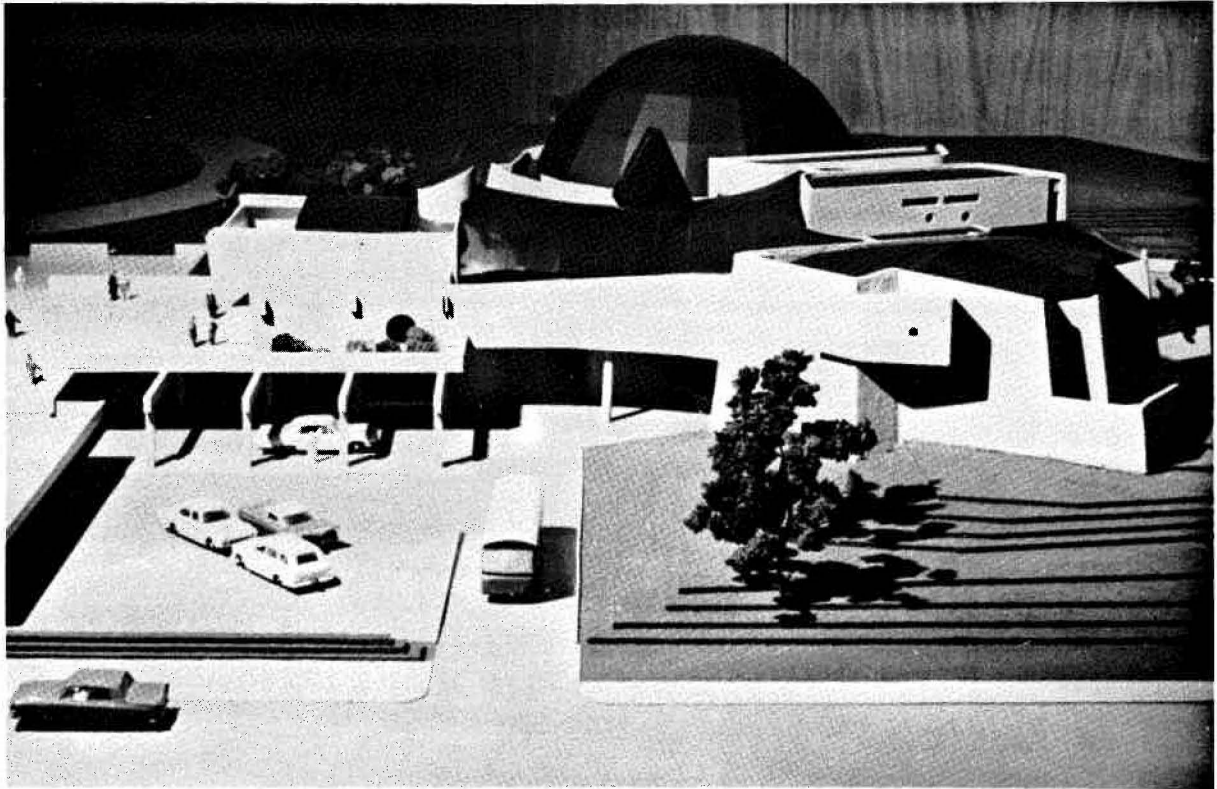


Capital Appropriation
- \$ 1,549,231.26

We wish to express our appreciation to members of the Zoological and Heritage Park Societies for their assistance to this Department and for their valuable contribution to parks and recreation in Calgary.



The Calgary City Centennial Committee with His Worship Mayor Leslie and later Alderman Law as Chairman, and the Recreation Study Committee with Alderman Berry as Chairman completed important planning projects which will have major effects on Calgary's Recreation Services in the years to come. The Study Committee's report was the first attempt to set down principles for the guidance of Parks and Recreation policies in Calgary. The Centennial Planetarium will be one of the City's most important recreation and educational facilities, in addition to making an interesting addition to the City's architecture.



In presenting this report, may I express my appreciation to the staff of the Department for the energetic approach to their various tasks and their attitude of sincere public service.

Yours truly,

H. Boothman,
Superintendent,
Parks, Recreation and
Cemeteries Department.

ADMINISTRATION

During 1965 there was a steady increase in the development of park land and the provision of facilities for the enjoyment of the public, brought about by the continuing development of new residential subdivisions.

As more parks are developed and equipped, and more buildings of various kinds provided there is inevitably a need to increase staff and equipment to maintain and service these added facilities. The recruitment and training of new personnel throughout the many sections of the Department is a continuous process and involves the efforts of many experienced members of the permanent staff. One of the complications in building up an efficient and reliable work force is the seasonal nature of many of our operations which results in the situation where we are not able to provide the bulk of employees with a full twelve months of employment, thus having to lose the benefit of experienced personnel in many cases each year.

In our horticultural section we have graduated our first group of five gardeners in our apprenticeship training program which is working out very well and providing a continuing source of trained gardeners for the future. A new group of five apprentices are now in training.

Due to the variety of our operations we are continually contacted by members of the public and various organizations for information and assistance and this is best illustrated by the following statistics with regard to the number of telephone inquiries received daily in our main office and at other locations within our operational organization. The number of calls are metered and recorded through our central call box operator. Reported here are peak months, with the daily average for the year for all calls being 137.

	<u>February</u>	<u>May</u>	<u>July</u>	<u>August</u>
General Information-Horticultural etc.	1127	1747	1155	554
Recreation Facilities & Programs etc.	1396	1605	1097	1112
Weed Complaints	--	384	489	417
Cemeteries	<u>118</u>	<u>133</u>	<u>106</u>	<u>58</u>
Total Calls	<u>2641</u>	<u>3869</u>	<u>2847</u>	<u>2141</u>

NOTE: The statements covering expenditures and revenues as shown this year cover both the years 1964 and 1965, thus bringing the statements up to date from the past two years when only appropriations for the report year were shown in order to provide the report earlier in the year. It was decided that this year the final figures for 1965 expenditures and revenues should be included in the report if available before the end of April, which has proved possible.

As mentioned earlier our staff of employees is gradually increasing in numbers due to the ever expanding scope of our operations, and following is the breakdown of our allowed establishment for 1965.

	<u>Established Positions</u>	<u>Part Time and Limited Term Positions</u>
Administration	12	--
Golf Course, Camp Ground and Heritage Park	6	20
Calgary Zoo	21	1
Cemeteries	15	60
Weed Control	4	23
Park Maintenance and Construction	47	250
Repair Shop and Plumbing	24	16
Greenhouses, Nursery and Conservatory	9	21
Recreation Facilities	27	28
Athletics and Aquatics	14	140
Recreation Services	<u>7</u>	<u>200</u>
	<u>186</u>	<u>759</u>

GOLF COURSES

Players Down

The Shaganappi course was open for play from April 22nd to November 6th which was a reduction in the length of the season over that of 1964 of some two weeks. This was due to a late wet spring and generally the entire season was adversely affected by cool and often damp weather conditions, with the result that patronage was reduced from the previous year.

More Parking

The course was maintained in good condition throughout the year and a number of improvements were carried out. The old frame storage building on the west side of the main parking lot was removed as it was becoming very unsightly. Additional parking space was created on the east side of the entrance road by removing some 25 poplar trees and transplanting them at various locations on the course. Clumps of caragana were also removed from this area and transplanted to form a hedge between the new parking area and the adjoining fairway. This parking lot will be further improved by black topping at a later date.

New Tees

Two new grass tees were constructed and put into use during the season on the 13th and 15th fairways.

Lakeview

The Lakeview Par 3 course was open for play between May 8th and October 13th, with patronage also down from the previous season due to the generally unfavourable weather conditions.

New Clubhouse

A permanent modern clubhouse was constructed at the course along with a small shelter at the first tee. A new seventh green was provided during the season and generally the course was in good condition. Some permanent chain link fencing was provided in the area of the parking lot.

Third Course

Approval was received for the construction of a 9 hole course in the park area to be known as Confederation Park with the golf course occupying the area lying between 14th Street and 19th Street N.W. A start was made on land preparation work during October and it was possible to continue work until approximately the end of November. This course is scheduled for completion in 1967.

CAMP GROUND

Registrations

In spite of generally cooler weather during the year and considerable rain, there was a total of 11,800 registered camp units representing an estimated total of almost 42,500 people who stayed at the grounds between May 21 and September 21, 1965.

Improvements

Conditions at St. Patrick's Island were improved before the camp opened by providing sand bases at some of the tent spaces and by the construction of a large barbecue pit surrounded by log benches. This feature was well received and much used during the evenings by the campers.

Pearce Estate

During Stampede week some nine hundred units were accommodated at the Pearce Estate overflow camp which was provided with extra washroom facilities before opening. This site is naturally suited to camping and has been recommended and approved for development as a future permanent camp ground. This will be necessary due to planned use of the St. Patrick's Island area as a portion of the Zoo in the future. No firm decision however, has been made with regard to when permanent development should commence.

CALGARY ZOO

Fine Exhibit

With the many improvements which have been made during the past few years at the zoo coupled with the unique attractions of the natural history park, it can be safely said that the St. George's Island Zoo complex is one of the most outstanding exhibits of its kind on this continent.

Zoo Conference

Of special note in 1965 was the hosting of the Western Regional Zoo Conference by the Calgary Zoological Society from Jun 6 - 9 here in Calgary. Chairman of the conference was Mr. Tom Baines, former Curator of the Calgary Zoo and a past president of this organization, the American Association of Zoological Parks and Aquariums. The distinction of having this conference held in Calgary will no doubt assist in promoting the Calgary Zoo as an outstanding attraction to many Canadian and American cities who were represented at the conference.

Director

The resignation in the fall of Mr. L.W. (Larry) Cahill, new Curator at the Zoo has resulted in a new search for a successor who when selected will be known as Director rather than Curator.

Improvements

In the spring of 1965 a new hospital and isolation building having a floor area of some 400 sq. ft. was completed, with outside runs covering another 200 sq. ft. This is a much needed improvement and will do much to facilitate the treatment of sick animals. An interesting addition to the Children's Zoo is the creation of a nocturnal house for night prowling animals which is illuminated for visitors only by red guiding lights. New guard rails were erected in front of the carnivore pens and the Cheetah enclosure. Paving of walkways was extended and an additional area of approximately twenty-five acres of land for hooved animals was fenced on the north side of the river. A storage section of over one thousand sq. ft. was added to the concession building during the year.

New Exhibits

In November, work was started on the construction of a new building to house Hippo's and Rhino's and it is planned to have it completed for occupancy in the spring of 1966. New animals and birds of interest arriving during 1965 were, Cheetahs, Fennec foxes, Arctic wolves, horned billed turaco, Knysna turaco, mountain sheep, Bausmans Pottos, European wildcats, Gila monster, grizzly bears, quonacos, and of particular interest was the birth of one polar bear cub.

Visitors to the Island and the Zoo during the year continued around the one and one half million mark.

NUMBER OF EXHIBITS FOR 1965:

435 Mammals	of 147 species
638 Birds	of 203 species
32 Reptiles	of 14 species
12 Fish	of 1 species

ACCOMMODATION FOR LIVE EXHIBITS ARE AS FOLLOWS:

Total area of buildings 59,718 sq. ft.
Total area of pens & cages 40,650 sq. ft.
Total area of enclosures for hooved animals 90 acres.

TROPICAL AVIARY

From July 1st to September 15th this very popular attraction was open to the public from 10:00 a.m. to 8:00 p.m. daily. During the balance of the year regular hours are from 10:00 a.m. to 4:30 p.m. daily. New visitors to the aviary continue to express surprise and pleasure at the arresting variety of plants and birds displayed at this location.

Main House

The attractiveness of the main house was improved by the construction of a balcony some eleven feet from the floor with a stairway at each end. This affords the visitors an opportunity to see the plants from a different angle and to sit and listen to the many beautiful song birds living freely in the building. Two small pools were constructed, one under each stairway, with one having a waterfall and the other a still pool for growing water lilies.

New Balcony

The steel posts supporting the balcony have been covered with the bark from cork oak trees imported from Spain, with two posts made to resemble trees by creating branches. The posts have also been planted with ornamental plants to improve their appearance.

Easter Lillies

At Easter there was a special fine display of hundreds of white lillies arranged around the main pool and along the north side of the house.

Banana Plants

The last of the banana plants commenced blooming late in November and it will take between two and three months for the seed to ripen after which the plant will die. About fifty edible bananas were harvested from the common banana plant (*Musa parasiaca*), which was undoubtedly an interesting and unusual sight for most visitors.

East House

In the east house throughout the year there was an attractive display of varieties of potted plants with a special Chrysanthemum display in the fall. This year's Chrysanthemum display featured 325 large, 41 cascade, 34 spray and, 86 pot plants.

Chrysanthemums

Most of the large mums were displayed in the centre bed with cascade mums along the south bench as well as yellow and pink Princess Ann pot mums for variation. Behind the glass partition on the east side was built an 8 foot high pyramid - shaped display of 23 cascade Chrysanthemums.

Christmas Display

As a special Christmas display, the centre bed where the large Chrysanthemums had been displayed was planted with red Poinsettias, with an arrangement of Cyclamen and Christmas Cherries on the south bench. A decorated Christmas tree was placed behind the glass partition and surrounded with about 30 red, white and pink Poinsettias. Some Orchids and Bromeliads were also displayed here.

West House

Throughout the year the west house featured a fairly permanent display of a variety of house plants. There are now about 150 plants in 60 different varieties which can be seen. Of special interest was a display of some 172 Begonias in 36 different varieties.

We are now able to maintain temperature control in each house independently through the installation of separate thermostats and power valves which is a great advantage.

HERITAGE PARK

During 1965 which was the second season of operation, some 250,000 people visited this park. Two additional buildings were moved into the park during the 1964 and 1965 winter period, these being the N.W.M.P. Barracks from Banff and the old Traders Bank Building from Munson, Alberta.

The highlight of the 1965 season was the launching of the 150 ton stern wheel boat, which is a half size replica of the C.P.R. "Moyie" which operated on the Kootenay Lake during the 1890-1950 era. During the 40 days that the boat was in operation, approximately 28,000 passengers were carried on a one hour tour of Glenmore Reservoir. This new and delightful addition coupled with the railway train which travels around the park on 4,100 ft. of standard gauge track will provide a lasting attraction for the visitors to the park, not to mention the hundreds of interesting artifacts displayed throughout the buildings and park.

Major projects planned in the 1965-1966 development program will include reconstruction of the old Canmore Opera House, a second General Store, restoration of Calgary's first Jewelry Store and, a full size replica of the Dingman Oil Derrick. Final completion of the Hudson Bay Trading Post will also be carried out.

Although attendance at the park during 1965 was no greater than in 1964 due to unfavourable weather conditions on many weekends, given a favourable break in the weather during the 1966 operating season, this should prove to be a most successful year, with the train and boat both operating for the full season and most other exhibits in a completed stage. At this date it is felt that the park affords a complete range of interests for children and adults alike.

THE CALGARY AND DISTRICT PLANETARIUM

Official Centennial Project

A new attraction in the City of Calgary now being constructed in Mewata Park will be administered by the Parks Department. This is our official Centennial Project, The Calgary and District Planetarium.

Sod Turned

Officials of the Parks Department worked throughout 1965 with the Architects, McMillan, Long and Associates, as well as with the Planetarium Consultant Dr. R.K. Marshall of New York. Plans were completed so that tenders might be called by late November. Contract for construction of the building was awarded by City Council to Hashman Construction Co. Limited on their low bid of \$1,224,870. A sod turning ceremony was held at the site on December 20 with Mayor Jack Leslie, assisted by Centennial Committee Chairman Alderman Marion Law, officiating.

The building is scheduled to open on July 1, 1967. However it must be completed several months ahead of this date to permit installation and testing of the delicate optical equipment being supplied by the firm of Carl Zeiss in East Germany.

Office and Shops to be Opened

Toward the end of 1965 recreational activities in the old army hut north of the Planetarium site came to a close. However the usefulness of this building will not be ended, for it will be used for workshops and offices, as well as for the storage of exhibits, prior to the Planetarium opening.

An Outstanding Planetarium

Experts who have examined the plans and model of the new Planetarium feel that it will be one of the most outstanding examples of this type of installation anywhere in the world. It will undoubtedly result in a great increase in the usefulness of Mewata Park to our citizens.

RECREATION FACILITIES

As the City continues to grow both in population and area the demand for additional recreational facilities of various kinds also increases. During 1965 the number of community pleasure rinks was increased by twelve, four additional community baseball backstops were installed, and there were seventeen additional playgrounds provided with tot-lot equipment.

One of the major annual undertakings is the provision at this time of more than ninety boarded hockey rinks in community parks, providing an initial flooding to establish an ice base and then removing them in the spring. Initial flooding of a considerably larger number of pleasure rinks, is also required. Snow removal after an excessive snowfall in connection with these rinks is also a sizeable job. Following is a list of the number of various recreation facilities available for use in 1965.

Swimming Pools - outdoor	10
Swimming Pools - indoor	2
Stadia and Athletic Park	6
Community Parks with Baseball Backstops	127
Playgrounds with Tot-lot Equipment	141
Community Hockey Rinks (natural)	94
Community Pleasure Skating Rinks (natural)	149
Hockey Rinks (natural) - City Operated	2
Artificial Ice Rink (uncovered) - City Operated	1
Artificial Ice Arenas - City Operated	2
Speed Skating Oval - (uncovered - 333 meters)	1
Fastball Park - City Operated	1
Rugger Fields - City Operated	3
Tennis Courts (4 double courts) - City Operated	3
Field Hockey Pitches - City Maintained	1
Cricket Pitches - City Maintained	1
Wading Pools	10
Playgrounds - Supervised	21
Winter Recreation Centres	26
Summer Day Camps for Children	2

USE OF CITY OPERATED ICE FACILITIES

The two city operated natural ice rinks at Bowview and the uncovered artificial ice rink at South Calgary received full use during the approximately four months of operation. This period of use which is dictated by weather conditions covered the period in 1965 from January to the middle of March and again from the middle of November to December 31st.

The two artificial ice arenas were in operation for a total of eight months of regular use, with the Foothills Arena providing a figure skating school program throughout the summer. Many more requests than could be handled were received for use of indoor ice from hockey groups and figure skating groups as a result of outdoor ice not always being available.

Recorded Use of the Four City Operated Ice Rinks were as follows:-

	<u>Figure Skating</u>	<u>Hockey</u>	<u>Pleasure Skating</u>	<u>Adult Skating</u>	<u>Teens Skating</u>	<u>Pre-Schoolers</u>	<u>Spectators</u>
Glenmore Arena	5,820	23,174	11,820	2,540	420	257	20,376
Foothills Arena	5,338	21,768	12,912	3,011	301	141	24,006

Approximate number of hockey games played by various organizations:-

	<u>Number of Games</u>	<u>Number of Organizations</u>
South Calgary	400	16
Bowview (2 rinks)	300	6
Foothills Arena	1,500	10
Glenmore Arena	1,300	15

Each organization sponsored many teams with the C.C.R.A. for example having 186 teams competing.

STADIA AND ATHLETIC FIELDS

The six locations operated by the Recreation Division for scheduled games by the many teams competing in various sports and events were used to varying degrees, with Mewata and Foothills being most heavily used.

The maintenance of the various features of these facilities during the comparatively short growing season which we have requires intensive and specialized care.

TABULATION OF EVENTS AT STADIA AND ATHLETIC FIELDS

	<u>Soccer</u>	<u>Rugger</u>	<u>Canadian Football</u>	<u>Field Hockey</u>	<u>Track</u>	<u>Miscellaneous Events</u>
Mewata	43	4	20	--	20	4
Foothills	51	3	32	--	--	-
Glenmore	20	30	22	--	--	1
Broadview	67	--	--	--	--	-
Renfrew - North	1	74	4	--	--	-
Renfrew - South	2	75	--	--	--	-
Kingsland	<u>31</u>	<u>--</u>	<u>--</u>	<u>1</u>	<u>--</u>	<u>--</u>
Totals	<u>215</u>	<u>186</u>	<u>78</u>	<u>1</u>	<u>20</u>	<u>5</u>

In addition the Field Hockey group was allowed unscheduled use of playing facilities at Stanley Park.

SWIMMING POOLS

Public use of the ten outdoor swimming pools was without exception much greater during 1965 than in 1964, despite the fact that the total number of days during which the pools were open was shorter by seven days, and the general weather pattern was on the cool side.

The two indoor pools were the most popular as the following attendance statements indicate. It is planned to convert two of the existing outdoor pools into enclosed types before next spring which will increase their popularity no doubt.

An extensive instructional program was conducted during the year at all the pools by the Canadian Red Cross and was well attended.

Competitive swim programs were held by Swim Clubs at the Foothills and Killarney indoor pools, and it is expected that entries in these meets will increase as a result of the successful instructional program being promoted.

CANADIAN RED CROSS SWIMMING INSTRUCTION
AT ALL CITY OF CALGARY POOLS

<u>Classification</u>	<u>Registration</u>	<u>Tested</u>	<u>Passed</u>	<u>Failed</u>
<u>Children</u>				
Beginners	3,789	2,180	1,520	660
Juniors	1,548	1,132	800	332
Intermediates	815	541	367	174
Seniors	307	192	150	42
<u>Adults</u>				
Beginners	514	239	203	36
Juniors	264	123	101	22
Intermediates	123	60	48	12
Seniors	72	41	37	4

ROYAL LIFE SAVING SOCIETY AWARDS PASSED

Elementary Certificate	1
Intermediate Certificate	13
Junior Artificial Respiration	2
Senior Artificial Respiration	18
Bronze	84
Bronze - Adults	9
Bronze Bar	2
Bronze Cross	12
Award of Merit	7

SWIMMING POOLS

1964 ATTENDANCE and REVENUE RETURN

Date OPENED May 16, 1964. Date CLOSED September 7, 1964. = 115 days.

<u>POOL</u>	<u>ATTENDANCE</u>	<u>REVENUE</u>
Mt. Pleasant	23,882	\$ 4,109.85
South Calgary	25,472	4,722.80
Bowview	28,084	4,750.45
Millican	13,831	2,230.15
Bridgeland	24,008	4,814.82
Acadia	27,236	4,280.05
Forest Lawn	30,012	4,826.10
Stanley Park	41,250	7,268.90
Highwood	34,494	5,828.75
Inglewood	16,134	2,558.15
*Killarney	<u>78,261</u>	<u>13,196.18</u>
	342,664	\$ 58,586.20

*Killarney Pool re-opened on September 15, 1964, for registration for Fall Swimming Classes.
Public Swimming resumed on October 1, 1964.

	<u>ATTENDANCE</u>	<u>REVENUE</u>
*Killarney	21,561	\$ 7,225.50 (Dec. 31)
Killarney Concession (Vending M/C)	_____	<u>403.34</u>
	<u>364,225</u>	<u>\$ 66,215.04</u>
	<u>TOTAL</u>	

1965 ATTENDANCE and REVENUE RETURN

Date OPENED May 22, 1965. Date CLOSED September 6, 1965. = 108 days.

<u>POOL</u>	<u>No. of Days</u>	<u>ATTENDANCE</u>	<u>REVENUE</u>
Mt. Pleasant	108	28,370	\$ 4,312.66
South Calgary	108	27,382	4,465.06
Bowview	108	30,613	4,549.47
Millican	108	19,880	3,059.76
Bridgeland	108	27,538	4,746.57
Acadia	108	35,193	5,167.51
Forest Lawn	94	35,745	5,402.06
Stanley Park	108	49,708	8,453.61
Inglewood	108	23,083	3,607.99
Highwood	108	40,930	6,492.26
Killarney (Jan. 1-Apr. 26)	130	49,069	
(May 8-Sept. 12)	114	75,229	
(Sept. 25-Dec. 31)	98	16,942	28,692.15
Foothills (June 2-Sept. 12)	103	61,800	
(Sept. 25-Dec. 31)	98	<u>18,148</u>	<u>18,062.93</u>
		539,630	\$ 97,012.03
		<u>TOTAL</u>	

SUMMER PLAYGROUNDS

For the summer of 1965 there were twenty-one supervised playgrounds in operation with the majority located in conjunction with school premises.

Playground staff were mainly recruited from the Calgary University and were given an intensive training session from June 14th to June 25th inclusive, with the theme for the season being Canada and the Pioneers. During the season which ended August 27th varying degrees of voluntary adult assistance was received from the Community Associations in connection with conducting the program. As the season commenced three days before schools closed only afternoon and evening activities were conducted on these days. Once the schools closed the regular weekly schedule consisted of Staff Training Meetings Monday 9:00 a.m. to 11:30 a.m. Playground hours Monday 1:30 p.m. to 5:30 p.m., Tuesday, Thursday and Friday 9:00 a.m. to 5:30 p.m., and Wednesday 1:30 p.m. to 5:30 p.m. and 6:30 p.m. to 8:30 p.m. Wednesday mornings commencing at 9:30 a.m. there were permanent staff meetings.

The program was divided between Arts and Crafts and physical activities, and at the close of the season a representative City-wide craft display was held at Eaton's store.

Registrations for the twenty-one playgrounds totalled 2,708 with total attendance being 57,912. Participation totals for the season was 123,150.

CHILDREN'S DAY CAMPS

Two camp locations were in operation during the summer, one being at Prince's Island and the second at Edworthy Park. Three two week camp sessions were conducted at each location with a total of 328 children attending.

Daily camps were from 9:30 a.m. to 4:30 p.m. with one overnight camp on which day the program started at 2:00 p.m. and ended at 11:00 a.m. the following morning. One Parent's Night was featured during each session with this program ending at 9:00 p.m.

Adequate training of suitable camp leaders prior to the opening of the camps is essential to the success of this recreational activity and fortunately this year most leaders had the advantage of previous camping experience.

Main activities featured at the camps were archery, hikes, games, sing songs, discussions, first aid, campcraft, nature lore and crafts and of course cook-outs. Expressions of enjoyment of the camps were received from the great majority of children, and response from parents was also good.

This activity would be much improved with the development of permanent shelter facilities at a suitably isolated location where outside interference would be minimal. Telephone service to the camp would be essential in addition to a pick-up truck for use by the director.

SPECIAL EVENTS

The usual recreational competitive program was conducted at the Stampede Grounds on July 9th for the benefit of the Indian children staying at the grounds. Some 220 children participated and were treated to a day of fun, games and free refreshments.

Three band concerts were arranged and held at Bowness Park during the summer, and this feature it is hoped will be expanded if plans for a more attractive and perhaps mobile band stand can be completed.

SAILING SCHOOL

Through a unique sponsorship arrangement a junior sailing school was conducted at Glenmore Lake with three qualified instructors assisted by a number of senior boys having considerable training with twenty sailboats being used. The junior course was attended by 250 children, with eighteen senior students as assisting instructors.

Theory classes were conducted in a large trailer at the dock site which was donated by an interested Trailer Company. Leadership and program was provided through the co-operation of City Recreation staff, Calgary Yacht Club, and the Glenmore Yacht Club.

An adult instructional course was also conducted in the evenings with a total of 114 students receiving instruction in the basic skills of small boat handling. Weather conditions were mostly favourable throughout the season with some squalls which helped to round out experience. The powered rescue boat crew was always on the alert.

Special events during the season were the hosting of the Sailing Seminar for the Prairie Regions, the Precentennial Flying Junior Regatta, the Fire Ball National Regatta and the Provincial Sailing Regatta.

It is anticipated that by next season there will be a permanent training building provided with additional and separate docking and launching facilities.

WINTER RECREATION CENTRES

During the January to April 1965 period there were twenty-five centres in operation mostly in school buildings, with Junior High School buildings offering the type of facilities essential to a satisfactory activity program.

Activities conducted at the various centres according to age groups were as follows. Registration and total attendance figures for the ten week period are shown below each age group.

<u>9 - 12 years</u>	<u>13 - 15 years</u>	<u>16 - 18 years</u>	<u>Adults</u>	
Baton	Badminton	Track and Field	Mosaic Tile	Ladies Keep Trim
Crafts	Volleyball	Basketball	Sewing	Interior Decorating
Scottish Dancing	Basketball		Millinery	Chinese Painting
Tumbling	Track and Field		Badminton	Advanced Sailing
Group Games	Tumbling		Bridge Instr.	Fishing Instr.
Stamp Collecting	Gymnastics		Golf Instr.	Men's Conditioning
Creative Dancing	Tennis		Track and Field	Tennis Instr.
Wrestling			Oil Painting	Hostess Instr.
Irish Dancing			Modern Dancing	Ceramics
Tap Dancing			Basketry	Leather Crafts
			Charm & Poise	Horsemanship
<u>Registration</u>			<u>Adult Registration</u>	
2,882	976	41	2,060	
<u>Attendance</u> - (Three age groups combined)-	26,953		<u>Adult Attendance</u> -	15,029

Every effort was made to provide a lively and well organized program at each centre, however, there is evidence of lack of enthusiasm for some activities resulting in low attendance. Increased training courses to develop qualified leaders to direct improved programs at the centres must be undertaken before next season.

The 1965 fall program over a period of nine weeks was conducted at twenty-six centres and the standard of qualified leadership and supervision showed some improvement.

Interest in activities offered for children increased slightly over the previous session. Activities for adults remained similar to those offered at the beginning of the 1965 centre period. There is still a great shortage of trained recreation staff available thus making continued In-Service staff training a necessity.

Total attendance figures for children and teens during this period totalled 26,239, with attendance of adults reaching 11,853.

PARKS OPERATIONS

Of great assistance to the administration of this phase of Department activities was the acquisition of the vacant offices at the Manchester Purchasing and Stores Building. The housing of those staff members under one roof, who are engaged in directing and supervising the park maintenance, park construction, provision and maintenance of park services and equipment, weed control program, tree planting and the greenhouse and nursery operations, resulted in vastly improved communications and co-operation.

Maintenance

Over 100 acres of newly developed parkland has been added to the maintenance section this year. Constant observation and close supervision of all crews made it possible to maintain a high standard of development in these additional new parks without a proportionate staff increase.

With an average development of 100 acres of new parkland each year, we are experiencing a shortage of skilled help. This may be overcome when the apprenticeship program has been fully developed.

Growing Conditions

All maintenance throughout the districts was carried out efficiently and economically. Weather conditions were not the best and a great deal of rain made it difficult to cope with the mowing operations, however the good moisture conditions provided excellent "Green Parks" throughout the summer months. It also was very noticeable that the cool weather had a negative effect on the growth of annual plants. These plants however recovered tremendously during the months of July and August when warm weather returned.

Man Power

At the peak of the season the total number of men employed in 1965 in this section was 34 permanent and 242 temporary employees.

Equipment

New equipment consisting of one 7-reel Parkmaster gang mower and one tractor with a Gyro mower attached were added to the large mowing equipment. This made it possible to provide an efficient mowing operation in all additional new parks.

Rose Garden

A rose garden planted this summer at Stanley Park has proven to be a successful achievement. All roses have grown very well and the display of colors was tremendous. Many visitors have admired the brilliant color display of the "Hybrid Teas" and "Florabunda" roses. Not all of the beds prepared were planted with roses, although this will be completed in the new year.

Tree Planting

A total of 7914 trees and shrubs were planted in various parks throughout the city. It was possible to prepare most of the tree holes and shrub borders during the fall with district and winter works crews. Preparation of tree holes and shrub beds during the fall has proven to be necessary for our planting program due to the short spring season (15 working days in 1965).

Tree Spraying

This is the second year that an extensive boulevard tree spraying program was carried out. All small to medium size trees have received two to three applications, whereas the older trees received only one application or as requested by residents. An extensive boulevard tree planting program carried out in previous years has made tree spraying a regular necessity. New insecticides are presently being tested, and will be used for more effective control in 1966.

Pruning

Pruning of trees throughout the city was concentrated mainly on the corrective pruning of all young trees on boulevards and in parks. It is very important to correct young trees and thus eliminate heavy pruning when they mature. Trees and shrubs at Burnsland Cemetery were also pruned by a park maintenance crew.

District Headquarters

In District #6 a new maintenance depot was provided at Stanley Park, complete with all necessary facilities which will ensure a more efficient operation in this large district. This building was constructed under the Winter Works program.

Mosquitoes and Fly Spraying

This is the first year that the mosquito and fly spraying operation was carried out by the Parks Department (Maintenance Section). Two units, consisting of one fog machine and one spray unit were used to keep them under control. Some difficulties were experienced due to the great amount of precipitation received during the summer months.

The "Fog Unit" was used in all large areas such as Bowness Park, Prince's Island, Glenmore Park etc., including all sloughs, whereas the "Spray Unit" concentrated on smaller areas, and areas which could be reached from the truck. A mixture of 100 gallons of oil with two pints of Baytex, was used in the fog machine.

Mosquitoes and
Fly Spraying

An early start preferably at the end of April or May, provided good weather prevails would ensure more efficient control throughout the year.

Development

An extensive program of renovating and new park development was carried out by the Maintenance Section. A large area the "North Capitol Hill Regional Park" has been graded and loamed and three large shrub beds have been excavated to a depth of thirty inches and supplied with good loam, prior to loam being spread on the park area.

The existence of springs made it necessary to install weeping tiles at the west side of the little creek. Work was terminated at the end of November. St. George's Heights Park was seeded to grass, also the dike at the west end of St. George's Island and fifteen other parks of varying sizes.

Several boulevards have been landscaped at the request of residents from older districts. Also, numerous minor jobs for the Engineers Department were completed.

An extensive top-dressing program was carried out during September and October to improve grass areas on older parks. This is very important, not only for establishing good grass, but also to reduce the amount of watering required.

Winter Works
Projects

In the early part of 1965, fifty 6 foot, heavy picnic tables were built in Bowness Park. 682 tree holes and, 23,250 sq. ft. of flower and shrub beds were prepared in October and November and are ready for the 1966 planting season.

Snow Removal

Snow removal on sidewalks adjacent to parkland was carried out at 218 locations on a regular basis.

STATISTICS

TREE & SHRUB PLANTING IN PARKS:

Trees 4118
Shrubs 3796

REPLACEMENTS ON BOULEVARDS:

Trees 5105
Shrubs 992

TREE PRUNING PARKS AND BOULEVARDS:

Trees 11494
Shrubs 2529

ANNUAL PLANTS ETC.:

Annual Flats 3045
Geraniums 3175
Perennials 2926
Dahlias 2310
Other Pot Plants 1311

LOAM USED IN ALL DISTRICTS: 9600 Cu. Yds.

GRASS SEED USED IN ALL DISTRICTS:

Fine Mix 2900 Lbs.
Boulevard Mix 80 Lbs.

MOSQUITO AND FLY SPRAY:

Oil 1710 Gallons
Korlan 34 Gallons
Baytex 165 Gallons

PEST CONTROL, TREE & SHRUBS:

Malathion 200 Gallons

FERTILIZERS:

Elephant Brand 16-20-0 15 Tons
Presto 2000 Lbs.

Construction

An extensive program of new construction was carried out during the year on areas generally categorized as City Parks, Regional Parks, Athletic Parks, Community Parks, Decorative Parks, New Subdivision Boulevards, Road Separation Strips and Sidebanks.

New and Re-Development

Work on a total of 105 land development projects was undertaken by the division, with most being completed and others still to receive final treatment next year. The Centennial Park - 10.50 acres, North Capital Hill Regional Park - 8 acres, Forest Heights Community Park - 9.00 acres, Foothills Athletic - 8.44 acres and Glenmore Athletic - 4.86 acres are a few of the larger projects undertaken.

Boulevard Tree Planting

During the late fall of 1964 and early spring of 1965, tree holes were dug in residential boulevards under the Winter Works program in preparation for the annual tree planting campaign in the following districts - Glenbrook, Chinook Park, Lincoln Park, Altadore, Parkdale, Balmoral, Westgate, Wildwood, Spruce Cliff and a number of special requests in many other districts. For the first time, we experimented with metal tree stakes, which proved to be superior to the wooden stakes since they can be used again many times.

Winter Works Projects

Also, under the Winter Works program considerable work was done. Four open fireplaces, 36 barbecues, 20 bleachers (50 seats) and 50 - 6 ft. picnic tables were built. Picnic site development and brush clearing projects were carried out at Pearce Estate, St. Andrews Heights, Lakeview Golf Course, 14 St. & 82 Ave., Glenmore Park, Bowness Park and St. Patrick's Island Camp Ground.

Fencing

The fencing crew was engaged not only in this type of work, but on various large projects carried out for the Engineering Department. A total of 72 fencing projects were completed excluding fence repairs. With the new post hole auger this work was more easily accomplished than in previous years.

Subdivision Developers

In the subdivisions of Brentwood, Charleswood, Collingwood, Lakeview, Acadia, Willow Park, University Heights, Varsity Acres and Mayland Heights a total of 5.1 miles of boulevards and 8 small decorative parks and playgrounds were seeded to grass.

Approximately 60 areas have been inspected by the Supervisors of Operations and Services. Half of these have been finally accepted and the rest listed under deficiencies, where the developers have not graded and loamed the boulevards or where no housing development has taken place.

Engineers Department Projects

In addition to park landscaping, a considerable amount of work was done for other departments. These include such major projects as the grading, loaming and seeding of boulevards and median strips on the south west bypass from 37 St. S.W. to the Banff Coach Road. The 28,832 cubic yards of loam required was provided by this division, with hired trucks and equipment. This major project consisted of 8 miles of boulevard and 4 miles of median strip, which varies in width from 12 feet to 60 feet. Total area 34 acres.

Other large developments were boulevards on 14 Street, from 66 Ave. to 75 Ave. and the median strip on the Blackfoot Trail from 34 to 42 Avenue.

Man Power

At the peak of the season there was a total of 9 permanent and 86 temporary men employed in this section of the Department.

New Equipment

The following new items of equipment were obtained in 1965 and were very useful in reducing the amount of hand labour required.

- 1 Post Hole Digger (with a 6" and 9" auger).
- 1 Viking Lawn Maker (5 ft. width).
- 1 Howard Rototiller - tractor drawn (5 ft. width).
- 1 Ariens Heavy Duty Self Propelled Rototiller (28" width).

DEVELOPMENT STATISTICS 1965

City Parks	19.95 Acres	
Regional Parks	10.25 Acres	
Athletic Parks	17.40 Acres	
Community Parks and Playgrounds	45.19 Acres	
Decorative Parks	11.94 Acres	
Miscellaneous Parks	10.53 Acres	
Road Separations and Engineering Projects	<u>56.34 Acres</u>	
TOTAL	<u>171.50 Acres</u>	
Boulevard Seeding	5.1 Miles	
Boulevard Trees and Shrubs Planting	2,668	
Loam (Single Contract)	90,165 Cu. Yds.	
Grass Seed	Fine Mix	19,520 Lbs.
	Boulevard Mix	26,000 Lbs.
	Playground Mix	6,200 Lbs.
	Barley	5,776 Lbs.
Parks Fencing	3 Foot Chain Link	425 Ft.
	4 Foot Chain Link	9,435 Ft.
	6 Foot Chain Link	3,520 Ft.
	7 Foot Chain Link	500 Ft.
	10 Foot Chain Link	60 Ft.
	12 Foot Chain Link	510 Ft.
	Post & Cable (4" x 6" Posts)	23,290 Ft.
	Mine Props (South Glenmore)	8,450 Ft.
Engineering Department Fencing (Completed)		
	4 Foot Chain Link	920 Ft.
	6 Foot Chain Link	13,900 Ft.
	Post & Cable Fencing	100 Ft.
	New Farm Fencing	3,300 Ft.
	Re-location of Farm Fencing	9,900 Ft.
	Re-location of Chain Link Fencing	1,200 Ft.

PARK SERVICES

Repair Shops

All machines, tools and other items of equipment used throughout the many sections of the Department were serviced and maintained by employees in the repair shop section. During the winter season all equipment was overhauled in readiness for the coming busy spring, summer and fall seasons. Once the growing season arrived the demand for the servicing of machines, sharpening of tools etc., increased steadily to the peak period during June, July, and August, during which months the demand was almost overwhelming.

Building Maintenance

In addition to the servicing of tools and equipment, this section provided for the production and maintenance of all types of park signs, and the painting and maintenance of the many buildings and various structures throughout the parks system.

Stores

Of importance also is the stores section of the repair shops whose function is to obtain and issue the many repair parts, supplies and tools required throughout the year, maintain inventories of all tools and equipment and arrange for storage of all items temporarily not in use.

New Building Needed

At the present time, with the expanding growth of the city resulting in a corresponding increased number of parks and facilities requiring development and maintenance, the building now being used as a repair shop, plumbing shop and storage centre, is functionally inadequate. It will be essential to the proper handling of these service operations that more suitable quarters will have to be provided in the very near future.

Plumbing Shop

The plumbing section was equally busy throughout the year attending to the turning on in the spring of the almost 400 separate park watering systems and carrying out needed repairs where necessary. In the fall these same systems were turned off and drained in readiness for winter.

New Services

During the year eighteen new park areas were provided with watering systems, and extensions to eleven existing systems were installed. Sixteen new service connections were installed at new park areas yet to be developed. In addition five new buildings were connected to water and sewer services.

QUANTITIES OF PIPE MATERIAL USED THROUGHOUT THE YEAR ARE AS FOLLOWS:

	<u>New Services and Extensions</u>	<u>Maintenance of Existing Lines</u>
Galvanized pipe 4 In.	2,616 Ft.	
Galvanized pipe 2 In.	14,524 Ft.	240 Ft.
Galvanized pipe 1½ In.	9,940 Ft.	70 Ft.
Galvanized pipe 1 In.	17,475 Ft.	368 Ft.
Galvanized pipe ¾ In.	238 Ft.	
Copper pipe 2 In.	40 Ft.	
Copper pipe 1½ In.		246 Ft.
Copper pipe 1¼ In.		103 Ft.
Copper pipe 1 In.	190 Ft.	
Copper pipe ¾ In.		406 Ft.
Copper pipe ½ In.		325 Ft.
Black pipe 2 In.		151 Ft.
Black pipe 1½ In.		141 Ft.
Black pipe 1¼ In.		627 Ft.
Black pipe 1 In.		112 Ft.
Black pipe ¾ In.		306 Ft.
Black pipe ½ In.		157 Ft.
Soil pipe 4 In.	286 Ft.	
Soil pipe 3 In.	35 Ft.	
Soil pipe 2 In.	10 Ft.	
Water main 6 In.	225 Ft. (Conduit)	
Aluminum pipe 2 In.	2,100 Ft. (Portable sprinklers)	
Tubing ¼ In.		200 Ft.

CEMETERIES

Queen's Park

Careful attention was given throughout the year to the maintenance of grave plots throughout the five city operated cemeteries, however this work was made difficult during much of the summer due to the many wet days experienced.

Damaged Graves

At Queen's Park Cemetery the heavy rains resulted in an above average number of sunken graves, with this situation being unfortunately aggravated by vandals who turned on stand taps overnight thus causing extensive flooding. There were also a number of monuments toppled and overthrown, resulting in damage and ultimate expense. A considerable amount of new seeding was lost and had to be redone as a result of untimely downpours.

Improvements

Paving of the main cemetery road out to 40 Avenue N.W. was completed, with two catch basins installed inside the cemetery for drainage purposes. Curbing of some existing road paving was done which will permit grassing down of the verges behind the curbs which should improve appearances and reduce maintenance work. Continued paving and curbing will be required for next year. Many more poplar and spruce trees were planted in the buffer strip along 40 and 30 Avenues, with seeding of the boulevard along 40 Avenue being completed. Considerable fill was obtained and placed along the north side of the ravine just south of 40 Avenue, after which the area was graded over and a modified slope created. A road was started to make this area accessible for burial purposes at a later date.

Buildings

The appearance of the cottage at this cemetery was improved by exterior painting and reshingling of the roof. The chapel and service building will require some repair work and exterior painting next year in order to keep it in good repair.

Union

The Union Cemetery complex which includes the Burnsland, St. Mary's and Chinese Cemeteries was maintained as well as could be done under the generally wet cool conditions. Over fifteen hundred sunken graves were repaired with many of these graves settling as a result of the heavy rains.

Improvements

Improvements to the Union Cemetery cottage were started by removal of the old verandah which had deteriorated badly. Preformed concrete steps were installed with metal railings and a canopy constructed overhead. The front of the building will be further improved by stucco over the basement wall after the old basement entrance is filled in. Flower beds are to be created on each side of the main steps, and some hard surfacing of the roadway at the entrance to the building carried out. A storage building for gasoline and oil was constructed away from the cottage which will remove the danger of fire from this building.

Burnsland

In the Burnsland Cemetery the veterans section was decorated with flags on decoration day which was June 7th. Flanders poppies were grown beside the headstones in this section and provided some vivid colour. An area in the north east corner of this cemetery was levelled out, loamed and seeded down along with three blocks of new grave lots which is a marked improvement. A stretch of new road to service this portion was cut out and will be gravelled in the spring, and some needed repairs to existing roads will be carried out.

St. Mary's

At St. Mary's Cemetery the burial section at the south end was loamed and seeded down to grass thus eliminating a rough and unsightly area. Grading and seeding of the boulevard strip along the west side of 1st Street East was carried out to eliminate a very weedy situation.

New Seeding

The new development area between 1st Street East and the Chinese Cemetery was graded over and seeded to coarse grass and the roadways cut out. The main roadway crossing this section was gravelled as it will be required for servicing the non-care section where three blocks of new grave lots were marked out.

Development

The Engineers' Department installed a storm sewer across the south end of this area for the purpose of draining the low portion of St. Mary's and the 1st Street East roadway, where trouble has been experienced each spring in the past from run-off water. Tree and shrub bed borders at the north end and south west corner of the new development part of St. Mary's were prepared and will be planted up in the spring. Considerable filling is required in the gully at the south end of St. Mary's extension and can be best accomplished by removing high ground to the east into the gully thus raising the ground level to where the natural slope of the land will become continuous.

Chinese

No major development or changes were required at the Chinese Cemetery during the year and this burial ground received regular and normal attention. The wrought iron fence along the 2nd Street East side was extensively damaged as the result of two private vehicles going out of control one night during the summer. However, a full police report was obtained and repairs were effected and the cost recovered from the insurance companies involved.

BURIALS DURING THE YEAR ARE AS FOLLOWS:

Queen's Park	841
Union	120
Burnsland	292
St. Mary's	304
Chinese	29
	<u>1,586</u>

GREENHOUSES

As in previous years a great number of plants of many varieties were raised and shipped out to the many floral parks and other locations within the parks system. Many special potted displays of plants for the Tropical Aviary were raised and brought to perfection in the greenhouses. Another house which will add another 1,500 sq. ft. of greenhouse space to the existing 11,800 sq. ft. is planned for construction during the winter of 1965/66.

Number of plants grown in 1965 are as follows:

Annuals	194,000
Rockery Plants	19,000
Perennials	11,000
Special Assorted Plants for the Tropical Aviary	12,462
Geraniums	3,560
Petunias (double)	1,680
Dahlias	2,315
Cannas	480
Assorted Plants	975
Hanging Baskets	50

NURSERY

Many thousands of tree and shrub specimens are developing to planting out size at the civic nursery, however, many of the specimens used in the 1965 parks and boulevards planting program were again brought in for planting through the calling of tenders. Total number of specimens planted in parks and on city boulevards, including replacements totalled 16,679.

The annual Arbor Day program which has been arranged for a number of seasons was again carried out between this Department and the Public and Separate School Boards. On May 14th, 1965 there were 6,970 Colorado Spruce seedlings individually packaged and distributed with instructions for planting to all Grade III pupils throughout the schools in the city. These seedlings were a gift from the Provincial Department of Agriculture, Field Crops Branch.

With the continued development of new residential subdivisions resulting in the creation of new parks and boulevards requiring beautification, an intensive program of plant propagation at the nursery will be essential for years to come.

WEED CONTROL

Weed Crews

Throughout the spring and summer, inspectors and weed cutting crews were faced with the immense task of attempting to control the growth of weeds and other undesirable plants as required by the weed control bylaw. During the period from May 3rd to November 12th there were four cutting crews operating, consisting of an average of six men in each crew including the foreman. Each crew was equipped with scythes and one or more Gravely tractor mowers with 3' cutting bar. In addition there were four Ferguson tractors equipped with 6' cutting bars operating along roadsides and on large undeveloped land areas.

Spraying

Two weed spraying units equipped with 200 gal. tanks for 2 - 4 D sprayed 2,500 acres of parks, undeveloped areas, and roadsides, with double shifts being employed during July and August. In addition some 30 acres of rough land was sprayed with sterilant type weed-killers.

Number of weed notices issued during 1965: 1,284
Number of private properties cleaned up by weed crews: 450

Increased Program

The last two items indicate an increase over 1964 of 523 notices issued, and 259 private properties attended to by city crews.

As a result of a report by the Weed Control Committee to City Council in December 1965, an increased weed control program for 1966 was endorsed.

STATEMENTS FOR EXPENDITURES AND REVENUES

ADMINISTRATION

	<u>1964</u>	<u>1965</u>
Appropriation:	\$65,821.00	\$66,668.00
Expenditures:	57,372.64	69,882.81
Salaries	\$58,935.08	\$61,683.02
Travel Expense	258.00	235.15
Private Car Allowance	1,320.00	1,320.00
Subscriptions and Association Dues	481.15	171.17
Printing, Stationery and Office Supplies	4,456.22	5,256.94
Furniture and Fixtures	938.95	463.62
Staff Development and Training	565.06	752.91
Holiday Suspense	<u>9,581.82 cr.</u>	<u>---</u>
	<u>\$57,372.64</u>	<u>\$69,882.81</u> ✓

ST. GEORGE'S ISLAND ZOO

Appropriation:	\$183,204.00	\$210,599.00
Expenditures:	190,780.28	202,100.56
Salaries	\$ 15,736.29	\$ 13,671.00
Wages	104,186.56	113,105.48
Private Car Allowance	365.00	420.00
Rental - Equipment and Services	244.27	509.72
Rental - City-owned Vehicles	2,051.83	3,216.59
Maintenance - Buildings and Property	8,106.28	4,289.12
Maintenance - Facilities	7,347.35	8,637.42
Utilities	25,231.13	23,416.21
Commissionaires and Policing	976.30	1,330.70
Feed Supplies	19,770.14	21,907.51
Sundry Materials	3,727.13	3,909.65
Horticultural and Agricultural Materials	<u>3,038.00</u>	<u>7,687.16</u>
	<u>\$190,780.28</u>	<u>\$202,100.56</u> ✓

DISTRICT MAINTENANCE

1964

1965

Appropriation: \$730,174.00
 Expenditures: 764,530.25

\$869,551.00
 853,511.87

Salaries
 Wages
 Rental - Equipment and Services
 Rental - City Owned Vehicles
 Mtce. - Buildings and Property
 Mtce. of Water Services
 Utilities
 Commissionaires and Policing
 Hydrant Water
 Materials
 New Equipment and Replacements

\$ 44,231.14
 481,600.77
 56,874.51
 35,029.76
 17,778.26
 33,651.57
 5,443.67
 2,277.60
 20,000.00
 64,858.78
 2,784.19

\$ 50,271.62
 530,326.91
 64,647.67
 40,522.14
 33,309.62
 34,118.24
 6,112.23
 2,417.42
 19,999.92
 71,786.10

\$764,530.25\$853,511.87 ✓STREET TREE PLANTING

Appropriation: \$38,170.00
 Expenditures: 37,379.37

\$36,287.00
 37,190.38

Wages
 Rental - Equipment and Services
 Rental - City Owned Vehicles
 Rental - Vehicles Not City Owned
 Materials

\$12,439.58
 421.81
 974.80
 916.44
 22,626.74

\$15,920.29
 1,256.81
 1,872.45

 18,140.83

\$37,379.37\$37,190.38 ✓WEED CONTROL

Appropriation: \$71,206.00
 Expenditures: 77,328.08

\$90,878.00
 90,795.92

Salaries
 Wages
 Rental - Equipment and Services
 Rental - City Owned Vehicles
 Materials
 Recoveries

\$ 8,990.46
 45,226.97
 9,996.02
 7,086.04
 6,028.59

\$ 8,497.72
 64,246.36
 10,765.36
 7,643.89
 6,589.44
 6,946.85 cr.

\$77,328.08\$90,795.92 ✓

ST. PATRICK'S ISLAND CAMP GROUND19641965

Appropriation:	\$13,170.00	\$ 7,825.00
Expenditures:	8,011.87	7,177.60
Revenues:	10,089.84	10,680.03

Wages	\$ 307.59	\$ 18.03
Rental - Equipment and Services	14.71	26.72
Rental - City Owned Vehicles	23.93	---
Maintenance - Buildings and Property	2,034.22	1,928.56
Maintenance - Facilities	2,736.75	1,671.48
Utilities	1,999.01	2,681.52
Materials	895.66	851.29
	<u>\$8,011.87</u>	<u>\$7,177.60</u>

CAMP GROUND REVENUE

Registrations - 34%	\$6,086.84	\$6,680.03
Basic Rental	4,000.00	4,000.00
Miscellaneous	3.00	---
	<u>\$10,089.84</u>	<u>\$10,680.03</u> ✓

HERITAGE PARK

Appropriation:	\$26,063.00	\$23,761.00
Expenditures:	19,274.47	40,963.46

Salaries	\$ 5,675.32	\$ 7,120.05
Wages	6,136.44	11,773.27
Private Car Allowances	397.06	360.00
Rental - Equipment and Services	---	1,475.16
Rental - City Owned Vehicles	1,609.96	1,276.25
Utilities	669.85	1,954.02
Insurance	---	2,547.00
Deficit from Society	---	9,112.36
Materials	4,785.84	4,645.35
Audit Fees	---	700.00
	<u>\$19,274.47</u>	<u>\$40,963.46</u> ✓

SWIMMING POOLS19641965

Appropriation: \$268,443.00
 Expenditures: 281,385.15

\$340,450.00
 336,833.47

Salaries	\$ 3,564.68	\$ 4,168.44
Wages	179,375.21	226,879.42
Private Car Allowance	350.00	858.27
Rental - City Owned Vehicles	404.70	1,059.14
Maintenance - Buildings and Equipment	39,533.54	41,610.65
Utilities	36,578.97	46,232.94
Laundry Service, Clothing and Incidentals	2,631.69	2,594.14
Chemicals	12,546.78	11,895.44
Materials	6,399.58	6,831.63
Swim Instruction Registration	---	5,296.60 cr.
	<u>\$281,385.15</u>	<u>\$336,833.47</u> ✓

ARENA PARKS

Appropriation: \$ 74,302.00
 Expenditures: 64,622.15

\$106,901.00
 117,650.61

Wages	\$ 41,528.47	\$ 81,341.01
Summer Skating School	---	1,599.77
Rental - Equipment and Services	1,860.43	6,487.93
Rental - City Owned Vehicles	40.10	---
Mtce. - Buildings and Facilities	3,421.51	5,397.66
Utilities	14,158.88	24,791.94
Materials	4,456.51	5,715.65
Floodlighting Fees	843.75 cr.	809.00 cr.
Figure Skating Fees	---	6,874.35 cr.
	<u>\$ 64,622.15</u>	<u>\$117,650.61</u> ✓

ATHLETIC FIELDS, PLAYGROUNDS & RINKS19641965

Appropriation: \$209,796.00

\$223,240.00

Expenditures: 198,231.40

206,768.56

Salaries	\$ 2,613.96	\$ 6,506.41
Wages	99,297.31	108,374.22
Private Car Allowances	720.00	720.00
Rental - Equipment and Services	9,535.48	9,781.17
Rental - City Owned Vehicles	9,284.63	9,220.97
Mtce. - Buildings and Facilities	31,612.22	16,342.78
Utilities	6,915.30	9,560.15
Hydrant Water	3,999.99	3,999.96
Community Floodlighting	32,760.00	32,856.50
Materials	2,944.26	11,090.65
Floodlighting Fees	<u>1,451.75</u> cr.	<u>1,684.25</u> cr.
	<u>\$198,231.40</u>	<u>\$206,768.56</u> ✓

RECREATION SERVICES

Appropriation: \$107,672.00

\$130,943.00

Expenditures: 97,154.31

119,053.29

Salaries	\$ 35,480.47	\$ 39,130.97
Wages	43,959.60	54,201.68
Private Car Allowances	4,332.52	4,771.38
Equipment Maintenance	1,752.16	1,453.95
Building and Property Mtce.	851.39	5,536.56
Utilities	433.93	1,554.17
Commissionaires and Policing	---	1,383.20
Rental - Buildings and Property	7,363.76	8,180.96
Adult Recreation Instructors Remuneration	12,488.75	11,934.50
Materials	6,104.73	7,433.27
Band Contests	35.00	---
Adult Registration Fees	14,045.50 cr.	14,745.50 cr.
Day Camp Registration	1,602.50 cr.	1,570.00 cr.
Tennis Court Fees	<u>---</u>	<u>211.85</u> cr.
	<u>\$ 97,154.31</u>	<u>\$119,053.29</u> ✓

GOLF COURSES

Appropriations:	\$67,289.00	\$71,691.00
Expenditures:	69,329.38	68,204.28
Revenues:	58,759.10	56,217.25

Wages	\$42,373.00	\$41,031.83
Rental - Equipment and Services	6,172.74	6,472.98
Rental - City-owned Vehicles	2,156.96	2,061.72
Maintenance - Buildings and Property	1,480.80	994.49
Maintenance - Water Services	2,460.43	1,608.68
Utilities	2,852.46	2,341.85
Management Remuneration	5,050.00	5,225.04
Materials	6,782.99	8,467.69
Contribution to Reserve for Improvements	---	---
	<u>\$69,329.38</u>	<u>\$68,204.28</u>

GOLF COURSE REVENUE - SHAGANAPPI

GREEN FEES

1,116 Jr. @ \$.75	\$ 837.00	839@ \$1.00	\$ 839.00
151 Jr. @ 1.00	151.00	99@ 1.50	148.50
5,931 Sr. @ 1.00	5,931.00	4,495@ 1.25	5,618.75
10,088 Sr. @ 1.50	15,132.00	7,032@ 2.00	14,064.00
33,606 (9) @ .60	<u>20,163.60</u>	27,711@ .75	<u>20,784.00</u>
	\$42,214.60		\$41,454.25

SEASON TICKETS

Gents & Ladies	3,915.00	2,470.00
Ladies & Senior Citizens (R)	690.00	1,230.00
Junior (R)	2,568.00	2,937.50
Man and Wife	<u>2,015.00</u>	<u>1,730.00</u>
	9,188.00	8,367.50

LOCKER RENTS

105.00	116.00
--------	--------

GREEN FEES - LAKEVIEW PAR 3

14,503 @ \$.50	<u>7,251.50</u>	12,559@ \$.50	<u>6,279.50</u>
	<u>\$58,759.10</u>		<u>\$56,217.25</u>

PLANETARIUM

1964

1965

Appropriation: Nil \$ 3,999.00
Expenditures: Nil 1,657.41

Salaries \$ 1,302.36
Travel Expense ---
Sundry Expense 355.05
\$ 1,657.41

GRANTS

Calgary Community Recreation Association \$ 300.00 \$ 300.00
Calgary and District Horticultural Society 500.00 500.00
Community Association Grants 25,000.00
Citizens Centennial Promotion 830.59
\$ 800.00 \$26,630.59 ✓

CENTENNIAL COMMITTEE

Appropriation: \$12,250.00 \$10,550.00
Expenditures: 12,474.99 9,230.83

Salaries \$ 3,192.60 \$ 5,414.88
Travel Expense 5,570.13 147.45
Building Rental 741.40 1,064.80
Equipment Maintenance --- 45.18
Telephones, Telegrams 297.30 277.09
Remuneration for Services 330.09 ---
Postage, Printing and Office Supplies 664.61 1,046.97
Sundry Contingencies 1,607.46 1,176.51
Office Machines and Equipment --- 52.40
Furniture and Fixtures 71.40 5.55
\$12,474.99 \$ 9,230.83 ✓

CEMETERIES19641965

Appropriation: \$197,988.00
 Expenditures: 188,118.65

\$196,741.00
 190,166.04

Salaries	\$ 16,018.93	\$ 15,418.42
Wages	158,959.85	161,208.25
Private Car Allowances	346.20	360.00
Employees Transit Tickets and Passes	25.00	25.00
Rental - Equipment & Services	25,075.63	26,723.83
Rental - City Owned Vehicles	4,049.21	4,306.65
Mtce. - Buildings and Property	1,705.93	5,299.33
Mtce. - Water Services	3,045.10	4,355.24
Utilities	1,121.89	1,128.14
Hydrant Water	6,000.00	6,000.00
New Equipment	1,139.56	1,876.62
Materials	8,835.59	4,712.59
Interest from Perpetual Care of Graves Fund	<u>38,204.24</u> cr.	<u>41,248.03</u> cr.
	<u>\$188,118.65</u>	<u>\$190,166.04</u> ✓
Perpetual Care Receipts	\$ 72,070.00	\$ 70,526.00

PARKS CONSTRUCTION

Appropriation: \$123,513.00
 Expenditures: 121,208.07

\$148,143.00
 157,918.86

Salaries	\$ 23,850.36	\$ 25,054.59
Wages	1,524.45	1,761.63
Telephones	412.95	122.15
Equipment Maintenance	1,307.47	1,895.27
Vehicle Rentals	5,162.80	4,826.96
Sundry Materials	5,035.48	3,333.26
Contribution to Capital	122,701.52	157,100.00
Charges Recovered from Other Budgets	<u>38,786.96</u> cr.	<u>36,175.00</u> cr.
	<u>\$ 121,208.07</u>	<u>\$ 157,918.86</u> ✓

SUPPORTING UNITSREPAIR SHOP

1964

Salaries	\$ 15,180.70	\$ 19,977.96
Wages	69,107.58	86,750.24
Equipment Maintenance	1,668.29	28.02
Rental - City-owned Vehicles	4,489.68	4,104.20
Rental - Buildings and Property	935.90	2,378.76
Materials	37,099.36	44,382.10
Tools	535.61	999.63
Contribution to Reserve for Equipment Replacement	8,133.36	---
Charges Recoverable	<u>137,150.48</u> cr.	<u>164,158.77</u> cr.
	<u>Nil</u>	Surplus <u>\$ 5,537.86</u> cr.

PLUMBING SHOP

Salaries	\$ 8,997.80	\$ 9,656.28
Wages	62,240.52	72,624.94
Rental - Equipment and Services	2,385.30	25.00
Rental - City-owned Vehicles	9,256.60	11,679.80
Rental - Buildings and Property	1,200.00	744.87
Sundry Materials	68,307.19	61,381.32
Charges Recoverable	<u>155,686.91</u> cr.	<u>164,773.02</u> cr.
	Surplus <u>\$ 3,299.50</u> cr.	<u>\$ 8,660.81</u> cr.

NURSERY

Salaries	\$ 4,074.10	\$ 8,431.32
Wages	34,339.20	26,856.29
Rental - Equipment and Services	930.80	911.30
Rental - City-owned Vehicles	1,536.01	1,493.91
Mtce. - Buildings and Property	1,823.87	4,767.47
Utilities	296.66	298.11
Materials	1,126.70	1,450.55
Inventory Adjustment	---	15,344.54
Charges Recoverable	<u>41,176.68</u> cr.	<u>42,269.30</u> cr.
	Deficit <u>\$ 2,950.66</u>	<u>\$ 17,284.19</u>

GREENHOUSE

Salaries	\$ 5,660.92	\$ 5,208.79
Wages	17,892.69	24,130.66
Rental - Equipment and Services	32.00	62.50
Rental - City-owned Vehicles	41.37	294.49
Mtce. - Buildings and Property	7,420.25	1,204.93
Utilities	2,659.98	2,533.05
Materials	3,682.65	4,056.65
Charges Recoverable	<u>25,717.35</u> cr.	<u>30,636.07</u> cr.
	Deficit <u>\$ 11,672.21</u>	<u>\$ 6,855.00</u>

SUMMARY OF APPROPRIATION and EXPENDITURES

	<u>1964</u>	<u>1965</u>
TOTAL OF APPROPRIATIONS	\$2,189,861.00	\$2,541,527.00

	<u>EXPENDITURE</u>	<u>EXPENDITURE</u>
Administration	\$ 57,372.64	\$ X69,882.81 X
St. George's Island Zoo	190,780.28	X202,100.56 X
District Maintenance	764,530.25	J 853,511.87 ✓
Street Tree Planting	37,379.37	J 37,190.38 ✓
Weed Control	77,328.08	J 90,795.92 ✓
St. Patrick's Island Camp Ground	8,011.87	X 7,177.60 ✓
Heritage Park	19,274.47	J 40,963.46 ✓
Swimming Pools	281,385.15	J 336,833.47 ✓
Arena Parks	64,622.15	J 117,650.61 ✓
Athletic Fields, Playgrounds and Rinks	198,231.40	J 206,768.56 ✓
Recreation Services	97,154.31	J 119,053.29 ✓
Golf Courses	69,329.38	X 68,204.28 ✓
Planetarium	---	J 1,657.41 ✓
Grants	800.00	J 26,630.59 ✓
Centennial Committee	12,474.99	J 9,230.83 ✓
Cemeteries	188,118.65	J 190,166.04 ✓
Parks Construction	121,208.07	J 157,918.86 ✓
Repair Shops	Surplus ---	J 5,537.86 cr. ✓
Plumbing Shop	3,299.50 cr.	J 8,660.81 cr. ✓
Nursery	Deficit 2,950.66	J 17,284.19 ✓
Greenhouse	Deficit 11,672.21	J 6,855.00 ✓
	<u>\$2,199,324.43</u>	<u>\$2,545,677.06</u>

STATEMENT OF REVENUE

Bowness Park	\$ 8,066.88 cr.	\$ 8,951.37 cr.
Camp Grounds	10,089.84 cr.	10,680.03 cr.
Swimming Pools	66,215.04 cr.	97,012.03 cr.
Arena Parks	19,787.71 cr.	31,405.60 cr.
Athletic Fields, Playgrounds and Rinks	2,727.93 cr.	5,336.64 cr.
Sundry Rentals	1,927.00 cr.	1,837.50 cr.
Cemeteries Fees	64,115.00 cr.	63,471.00 cr.
Golf Courses	58,759.10 cr.	56,217.25 cr.
	<u>\$ 231,688.50 cr.</u>	<u>\$ 274,911.42 cr.</u>

CAPITAL WORKS 1964

	<u>APPROPRIATION</u>	<u>EXPENDITURE</u>	<u>BALANCE</u>
Development of Park and Playground Areas	\$293,547.37	\$269,758.94	\$23,788.43
Cemeteries Development	11,526.58	4,984.48	6,542.10
Golf Course Development	4,000.00	---	4,000.00
Fencing Parks and Playgrounds	49,000.00	52,327.63	3,327.63 Dr.
Killarney Swimming Pool	357,400.00	363,331.43	5,931.43 Dr.
Foothills Arena	387,235.02	391,243.84	4,008.82 Dr.
New Buildings	58,000.00	49,725.25	8,274.75
Recreation Facilities	76,347.17	64,250.59	12,096.58
F.M. Communications Units	3,300.00	2,417.18	882.82
Heritage Park	<u>156,125.72</u>	<u>146,714.27</u>	<u>9,411.45</u>
	<u>\$1,396,481.86</u>	<u>\$1,344,753.61</u>	<u>\$51,728.25</u>

CAPITAL WORKS 1965

	<u>APPROPRIATION</u>	<u>EXPENDITURE</u>	<u>BALANCE</u>
Development of Park and Playground Areas	\$504,839.42	\$418,406.32	\$86,433.10
Cemeteries Development	16,542.10	14,790.87	1,751.23
Golf Course Development	149,700.00	35,121.94	114,578.06
Fencing Parks and Playgrounds	58,280.04	61,460.87	3,180.83 Dr.
Foothills Arena	202.77	202.77	---
Foothills Swimming Pool	388,692.00	389,354.01	662.01 Dr.
New Buildings	105,486.39	37,475.10	68,011.29
Vehicles and Equipment	38,698.71	18,226.58	20,472.13
Recreation Facilities	63,704.83	38,798.30	24,906.53
Heritage Park	<u>223,085.00</u>	<u>211,155.01</u>	<u>11,929.99</u>
	<u>\$1,549,231.26</u>	<u>\$1,224,991.77</u>	<u>\$324,239.49</u>