

**The City of Calgary**



PARKS, RECREATION and CEMETERIES DEPARTMENT

ANNUAL REPORT 1966

<u>Contents</u>	<u>Page</u>
Superintendent's Report	1
Administration	6
Calgary & District Planetarium	7
Heritage Park	8
Calgary Zoo	9
Parks Operations Division	11
Park Services Division	18
Weed Control	21
Greenhouse, Nursery & Tropical Aviary	22
Cemeteries	25
Golf Courses	27
Camp Ground	28
Recreation Division - Programs	29
Recreation Division - Facilities	32
Swimming Pools	34
Sailing, Tennis & Special Events	36
Expenditures and Revenue Statements	37

SUPERINTENDENT'S REPORT FOR THE YEAR OF 1966

His Worship the Mayor,  
Members of City Council,  
Board of City Commissioners.

Dear Sirs:

Please find here recorded the activities of the Parks and Recreation Department and other associated functions for the year 1966.

In making this annual review of these operations, the dominant impression is the ever-increasing demand for parks and recreation services reflected in new park lands and recreation facilities as indicated in the Department's operating budgets through the 1960's.

1960 -	1, 076, 717;
1961 -	1, 366, 693;
1962 -	1, 598, 671;
1963 -	1, 854, 323;
1964 -	2, 199, 324;
1965 -	2, 545, 677;
1966 -	3, 367, 324;
1967 -	4, 031, 858 (estimated)



GROWTH IN SERVICES:-

The Report sets out in detail the areas in service growth, these included the opening of two new indoor swimming pools at Acadia and Inglewood and a new arena at Renfrew.

(Growth in Services, continued)

In addition, some 26 community and decorative park sites were developed along with the beautification of 11 miles of highway landscaping.

In the year 1966, improved recreational Community Consultative and program services were initiated, as recommended by the Recreation Study Committee. These services included 10 additional supervised playgrounds, new day camps in Bowness Park, increased adult winter centre programs and the establishing of an improved athletic Co-ordinating and Consulting Section in the Recreation Division.



Major additions were added to the Calgary Zoo, Heritage Park and preparation work for the Planetarium was commenced.



## SCHOOL LIAISON

Closer co-operative and liaison procedures were established between the City Administrative and School Board Administrative staff which resulted in firmer procedures for:-

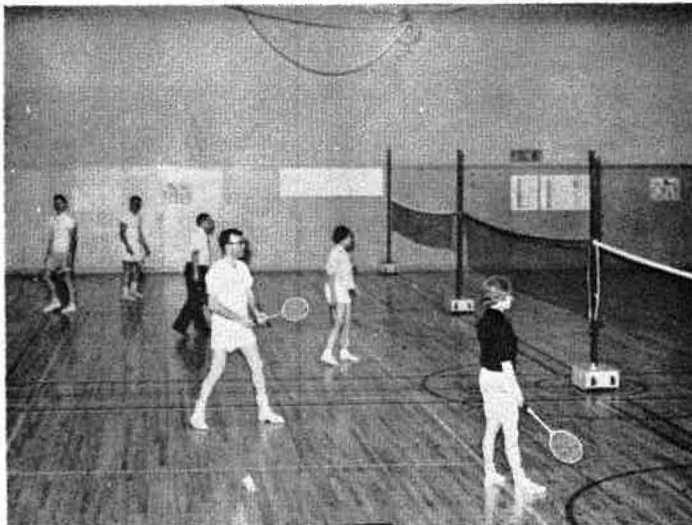


(a)

the joint-planning of all school and playground areas,

(b)

the opening of school facilities for Recreation Purposes.



(c)

the Recreation Division being responsible for the permitting of school grounds during the summer and other non-used times by the School Board.

A special Budget appropriation was made by City Council for the rental of school facilities for other groups carrying out recreation programs in addition to those operated by the Recreation Division of the City of Calgary.

## ADVISORY BOARD

A Recreation Advisory Board under the Chairmanship of Alderman Goodwin, was established in the fall of 1966, and so fulfilling one of the recommendations of the previous Recreation Study Committee. Members of the Board are:

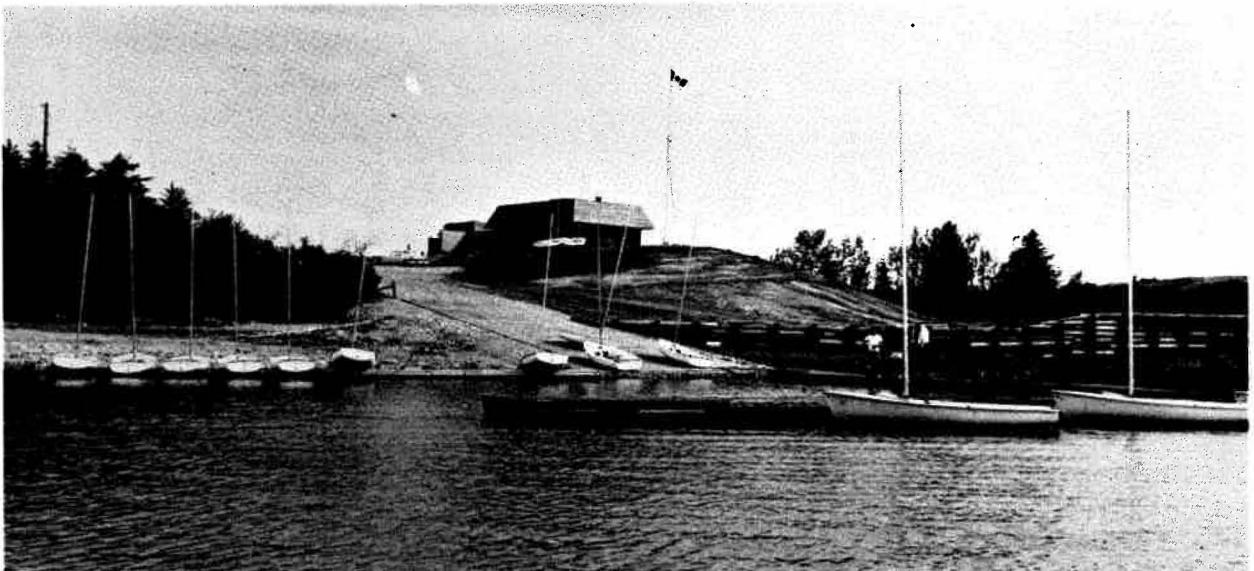
### Members:

Alderman L. Goodwin,  
Chairman,  
Mrs. M. D. Kovitz,  
Mrs. M. Southern,  
Dr. G.K. Higgins,  
Mr. L.J. Stack,  
Mr. B. Hawkes,  
Mr. A.D. Berry.

### Ex-officio Members

Mayor J.C. Leslie,  
Chief Commissioner,  
J.I. Strong,  
Commissioner,  
A.H. Nicolson,  
Commissioner,  
I.S. Forbes.  
Superintendent, H. Boothman.

(Ex-officio - continued)  
Recreation Director,  
J.H. Worsfold,  
Secretary, Deputy City  
Clerk, P. Carr.



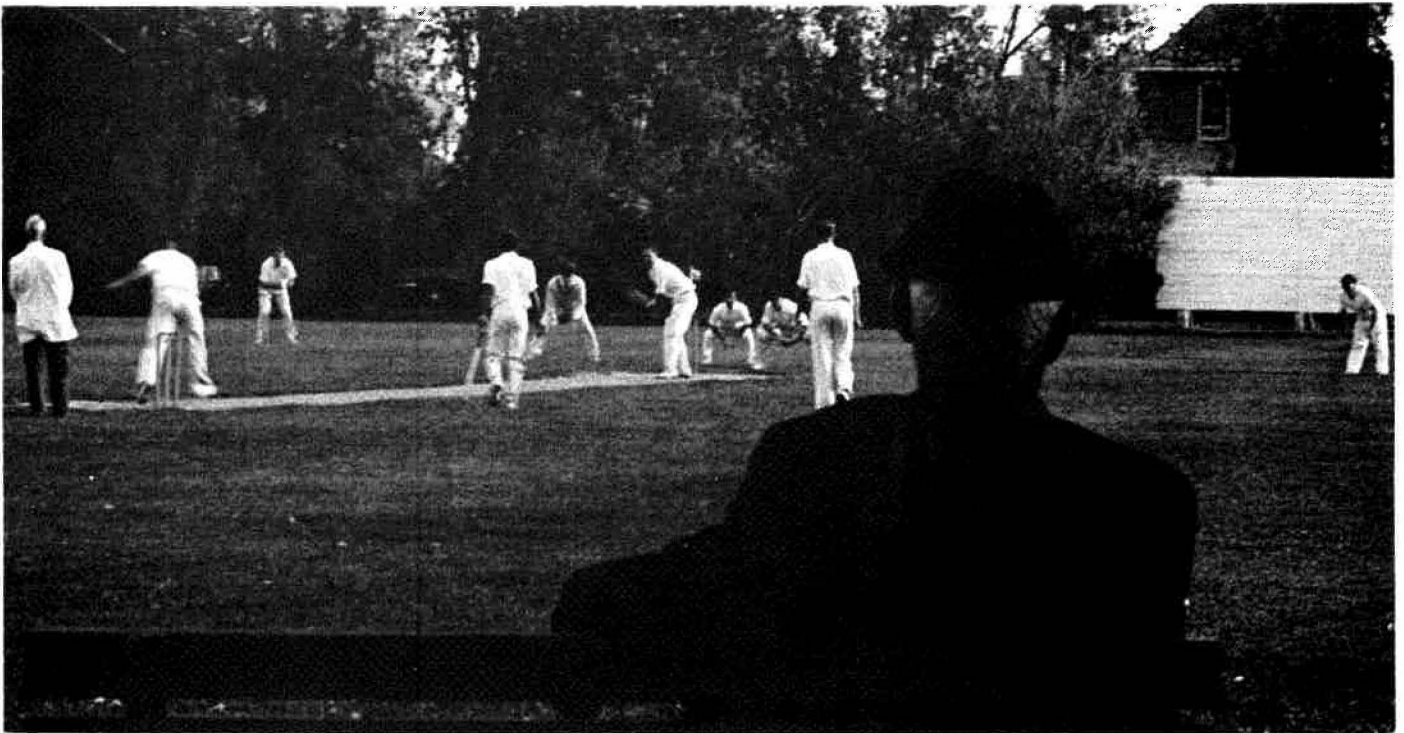
Mooring docks for Junior Sailors - Glenmore Park.

## ACKNOWLEDGEMENTS

The Department wishes to express appreciation and acknowledge the important contribution that this Citizens Committee is making to an improvement in the Recreation services to Calgarians. We would also acknowledge important contributions to parks and recreation services in Calgary of the Calgary Zoological Society, the Heritage Park Society and the Citizens Centennial Committee, responsible for the Planetarium development. The countless hours of service rendered by these citizens groups, Community Associations and Sports Governing Bodies, make a most significant contribution to parks and recreation services in Calgary. My work with these organizations also indicates that they too are appreciative of the encouragement and support of the Calgary City Council for their endeavours.

## THE ORGANIZATION

The organizational structure of the Parks and Recreation Department and its associated functions required a major readjustment in 1967 to meet the growth and challenges of increased services. While no additional administrative personnel were added, a number of changes in responsibility were assigned and a new organizational structure devised. The new organization chart of the Department is presented in this report from which it will be noted that a number of senior positions are now occupied by new personnel, principally, Mr. J.H. Worsfold, as Director of Recreation, Mr. William McKay as Zoo Director, Mr. S. Wieser, Planetarium Director, and Mr. M. Barraclough as the Cemetery Manager.



To these and other members of the Parks and Recreation Department, may I take this opportunity to express my appreciation for their energetic approach to their various tasks and their attitude of sincere public service.

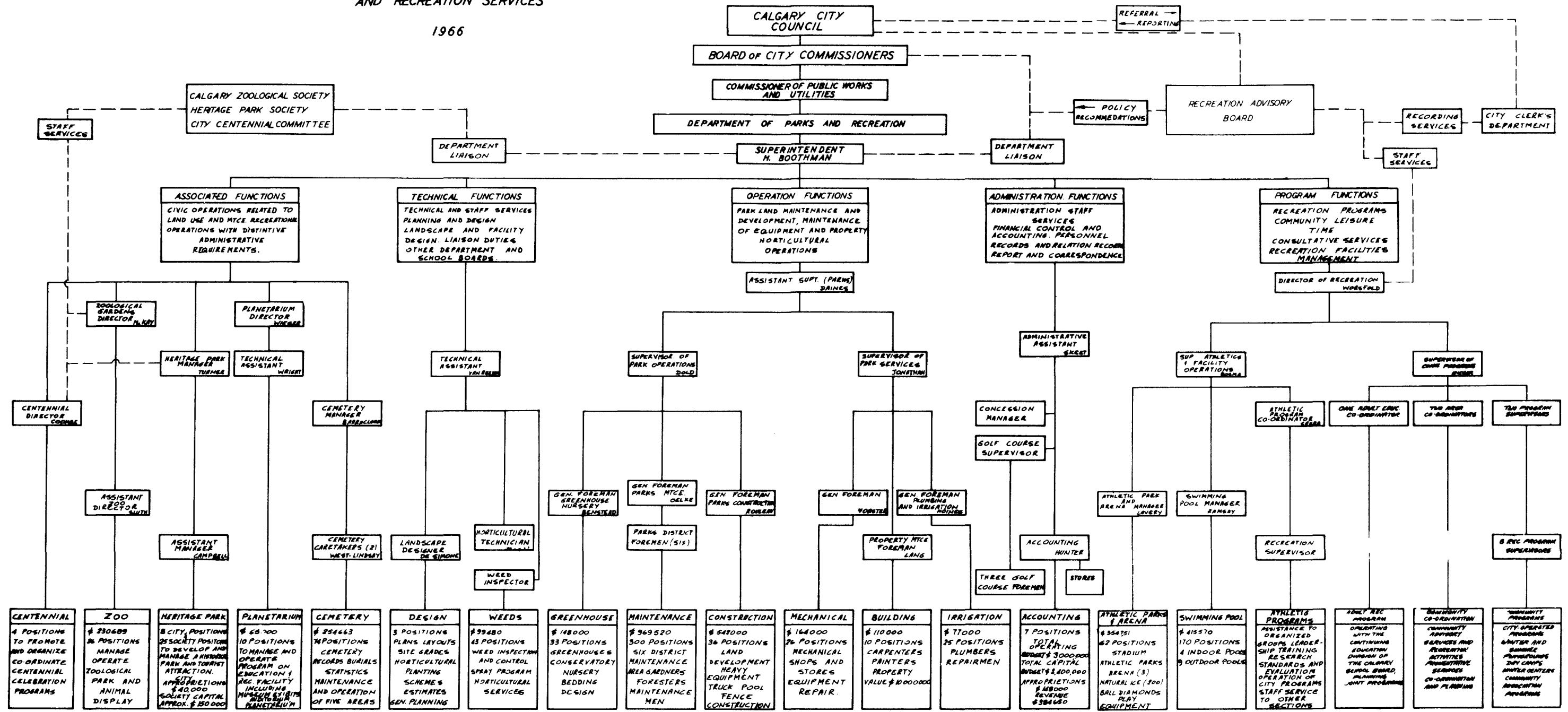
Detailed reports of the Department's activities are respectfully submitted in the following pages.

Yours truly,

H. Boothman, Superintendent,  
Parks, Recreation & Cemeteries Department.

ORGANIZATION OF CALGARY PARKS  
AND RECREATION SERVICES

1966



1966 CAPITAL APPROPRIATION \$2,410,036  
1966 OPERATING APPROPRIATION \$3,004,210

TOTAL PERMANENT EMPLOYEE 227  
TOTAL TEMPORARY EMPLOYEE 748

PARK ACREAGE: 3850  
FACILITY PROPERTY VALUE \$10,000,000 (APPROX.)

## ADMINISTRATION

Continued rapid growth of the city has inevitably resulted in a steady increase in the development of park land and the provision of various service and recreational facilities throughout the city. As a natural result of this growth, increases in maintenance and operational costs have resulted. Annual budgets continue to rise both as a result of expansion and also as a result of increased rates of pay necessitated by the demands of organized labour. No let-up in this spiraling pattern appears to be immediately possible, with the result that recruitment of additional staff and organizational changes have had to be made in most sections of the Department.

All this growth now poses new problems relating to accommodation, particularly in our administrative office and in our repair shop and storage section. The situation is now at the acute level and avenues are being explored to try and alleviate the situation and provide for future expected requirements. It is hoped that an early decision will be made with regard to the acquisition of a suitable site for the development of expanded service facilities.

In line with a previously developed pattern of developing and training new employees showing an aptitude for specialized work, an apprenticeship program for zoo attendants was started in 1966 and seven apprentices are being trained. This is a four year program and will qualify successful trainees at the end of this period for the status of zookeepers.

In spite of our gardener apprenticeship program we are presently short of fully qualified gardeners required to adequately staff our expanded park area. In many other sections qualified people are hard to find which results in a heavier load on key personnel and in some cases a reduced program of work in comparison to what would be possible if a full complement of experienced employees was available.

Following is a breakdown of our establishment for the year 1966.

	<u>Established Positions</u>	<u>Part time &amp; Limited Term Positions</u>
Administration	12	
Golf Course, Camp Ground and Heritage Park	7	20
Calgary Zoo	23	
Cemeteries	15	62
Weed Control	4	34
Park Maintenance & Construction	55	349
Repair Shop & Plumbing	28	31
Greenhouse, Nursery & Conservatory	10	21
Recreation Facilities	34	33
Athletics & Aquatics	20	126
Recreation Services	11	200
Planetarium	<u>4</u>	
	223	876

The following reports of activities within the various sections of the Department will provide a condensed version of the work program carried out during 1966.

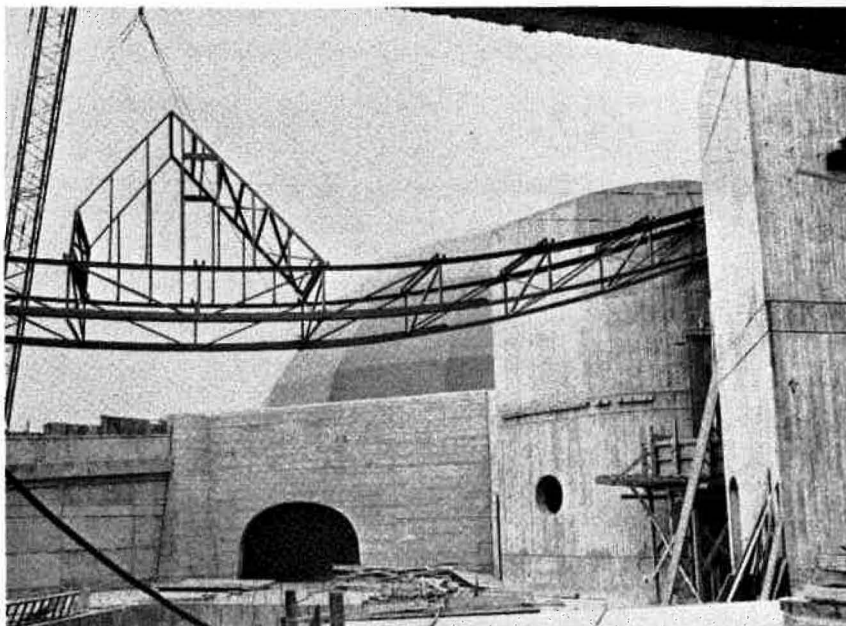
CALGARY AND DISTRICT PLANETARIUM - S. Wieser, Director

The official Centennial Project of the City of Calgary is the planetarium complex. It is presently under construction at Mewata Park and will be operated by the Parks Department.

Construction started on December 20, 1965, and during 1966, the building was about 75% completed. The planetarium is due to open on July 1, 1967, but the deadline for operational status is June 1, to allow for the training of staff and for minor adjustments.

The staff, operating from the Mewata Recreation Hut, has been active in construction of displays, in public relations work and in consulting for the planetarium. Talks were given to interested groups in the City explaining the purpose and the facilities of a planetarium. Star parties were held in three parks of the City to introduce the planetarium's telescopes to the public. They were attended by a total of over 1,000 interested citizens. The planetarium model was put on display at public schools and various exhibitions arranged by the Centennial Committees. Public lecture series were initiated in co-operation with the Royal Astronomical Society of Canada, Calgary Centre, to familiarize the public with the future facilities that the planetarium will offer.

In comparison to other planetaria in Canada, Calgary excels in the variety of facilities, in spaciousness, and in imaginative architecture. In general, the planetarium is well received by the Citizens of Calgary, and it will add greatly to the cultural and educational life of our community.



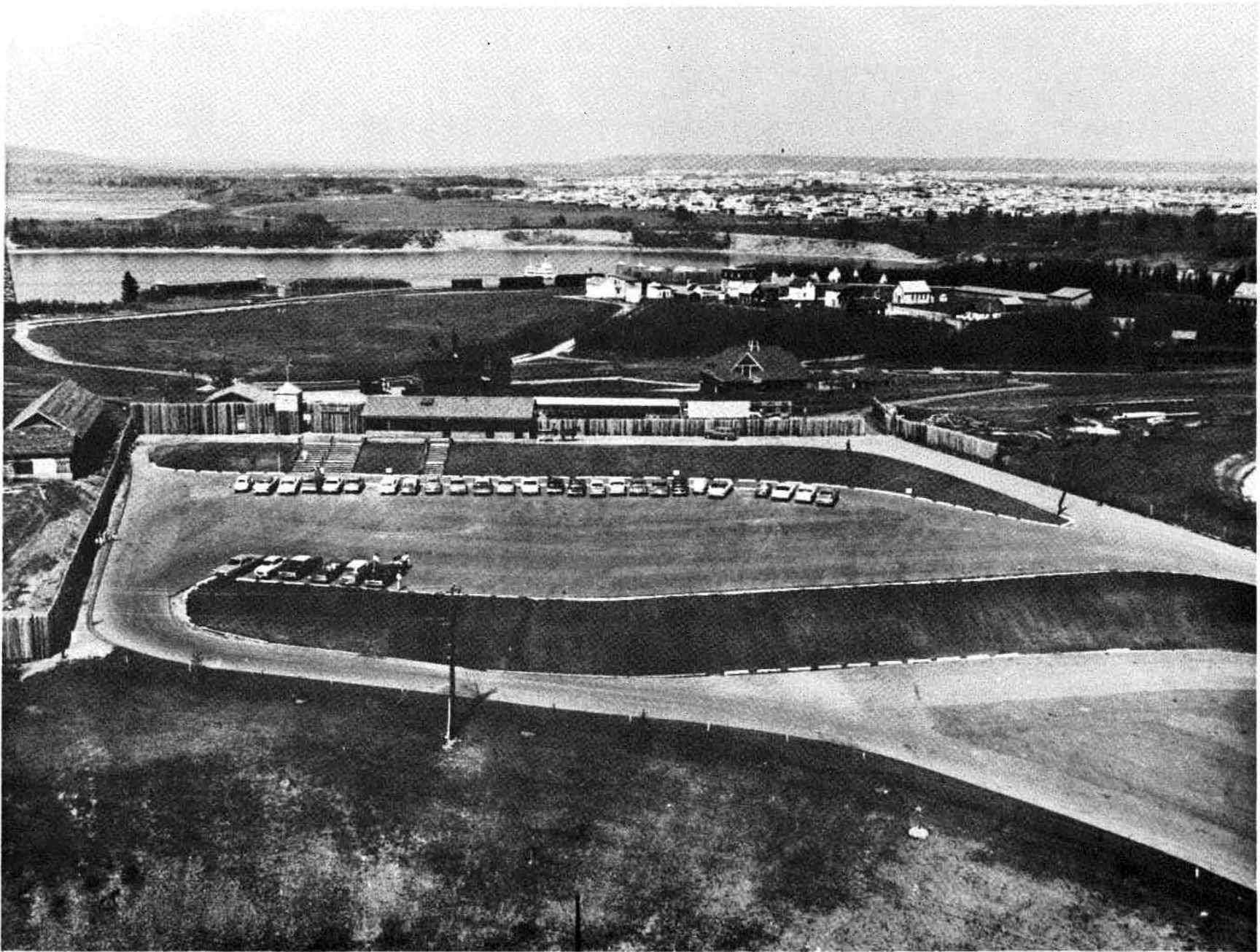
Construction of the Planetarium proceeds with 1967 completion date approaching fast.





Prairie winds and a liking for the rye bread of his native Russia inspired Wilhelm Mullen of the Bruderheim district of Alberta to build this windmill in 1912. The White Russian showed his skill and ingenuity - typifying the early settler - in the construction. The crown gear and pinion were hewn by hand from green birch cut from the bush. The windmill stands on the highest point of Calgary's 60 acre page of living history, Heritage Park, and looks down on the vista that greets visitors as they enter the main gate.





View of Heritage Park with townsite at right centre, and Hudson Bay Trading Post in background on the edge of Glenmore Lake, on which can be seen the sternwheeler Moyie approaching the dock. Just inside the stockade entrance in the foreground is the Midnapore Station and the Hull House, with the Canmore Opera House on the left edge of the picture.

HERITAGE PARK - D. Turner, Manager

Heritage Park during its 1966 operating season enjoyed its best season to date. A combination of fine weather and trouble free operation of the train and sternwheeler permitted 268,496 persons to make use of the facilities and view the artifacts on display.

New construction in the form of exhibits included a jewelry store, harness shop, oil derrick, bank, and improvements on the mine, boat dock, and ranch area, bringing the total number of buildings and exhibits to 49.

Towards the end of the season the Board of Directors had made plans for additional expansion in the form of new exhibits to be completed during the 1966 - 67 winter season, these being the Wainwright Hotel, grain elevator from Shonts, Alberta, a livery stable from Nanton, and the historic Prince House from 4th Avenue and 2nd Street S.W. in Calgary. It is hoped that these exhibits would be open for the 1967 Centennial year.

Statistics showing the continued growth of Heritage Park are shown below.

	1964	1965	1966
Gate Attendance	194,413	232,487	268,300
Gross Revenues	\$47,593.	\$91,034.	\$150,979.
Payroll	\$27,222.	\$55,317.	\$ 77,387.

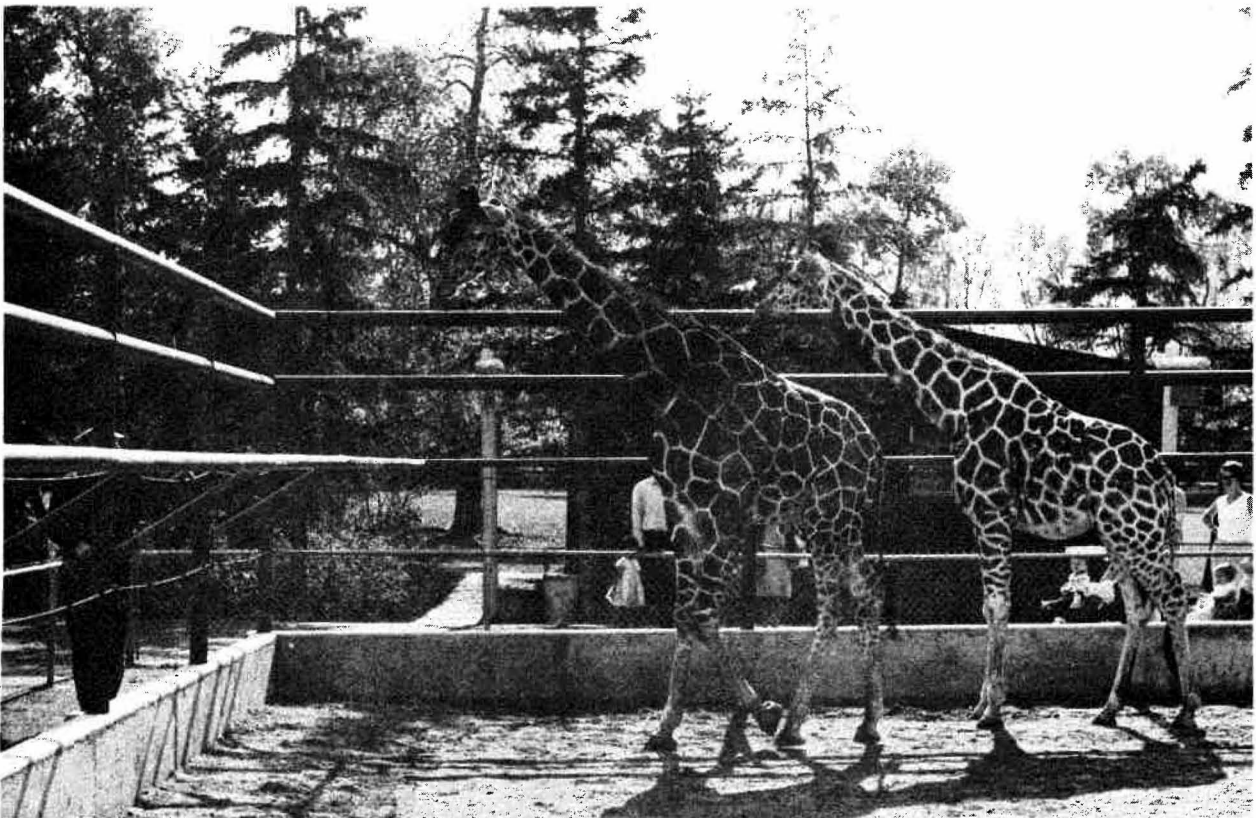
Barring prolonged periods of bad weather and mechanical breakdown of revenue producing facilities, Centennial year should be a memorable one for Heritage Park. Many special events are planned to mark Canada's 100th birthday highlighted by Princess Alexandra's visit on the 25th of May and a Centennial birthday party on the 25th of June.



Spaciousness is an attractive feature at Heritage Park

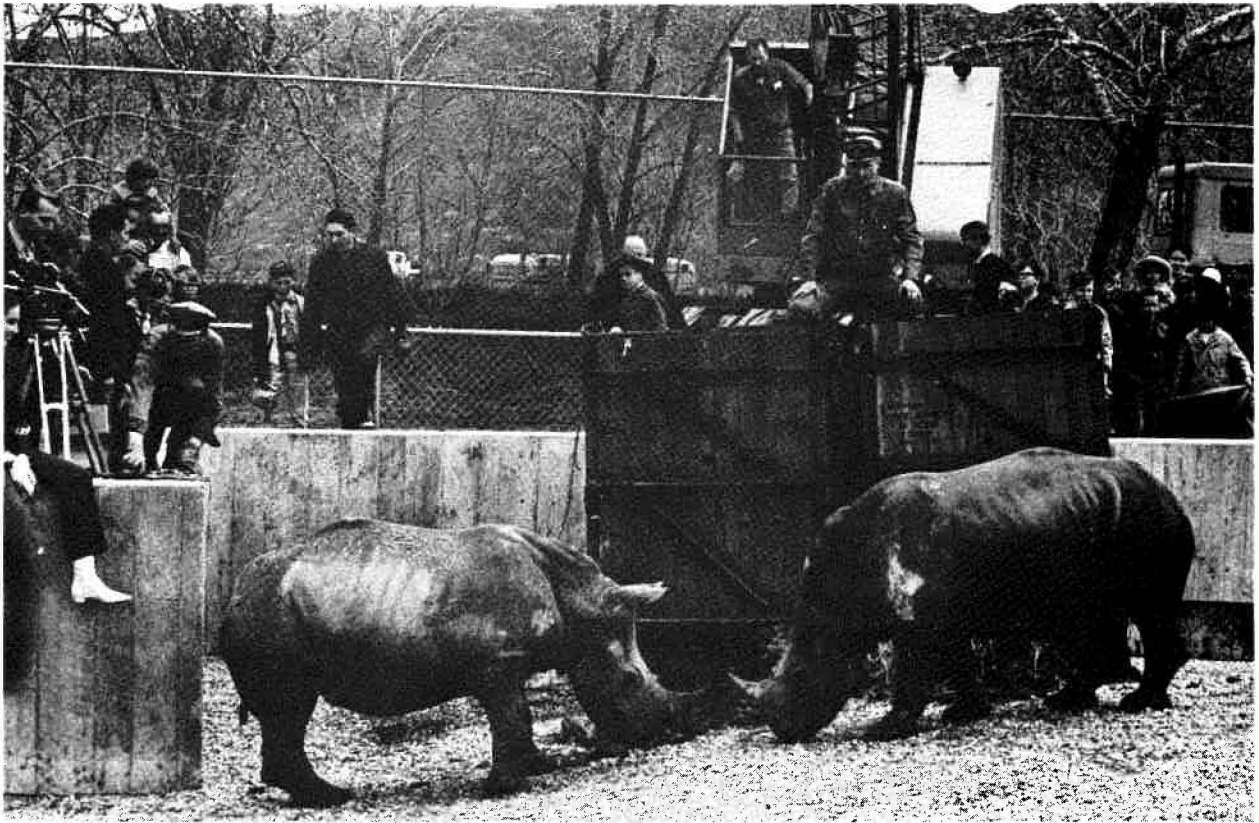


In bright spring sunshine on the morning of May 21st the extension to the large Mammal House was opened by Grant MacEwan, Alberta's Lieutenant Governor, who can be seen standing behind President John Ballem, awaiting his turn at the microphone to declare the building open.

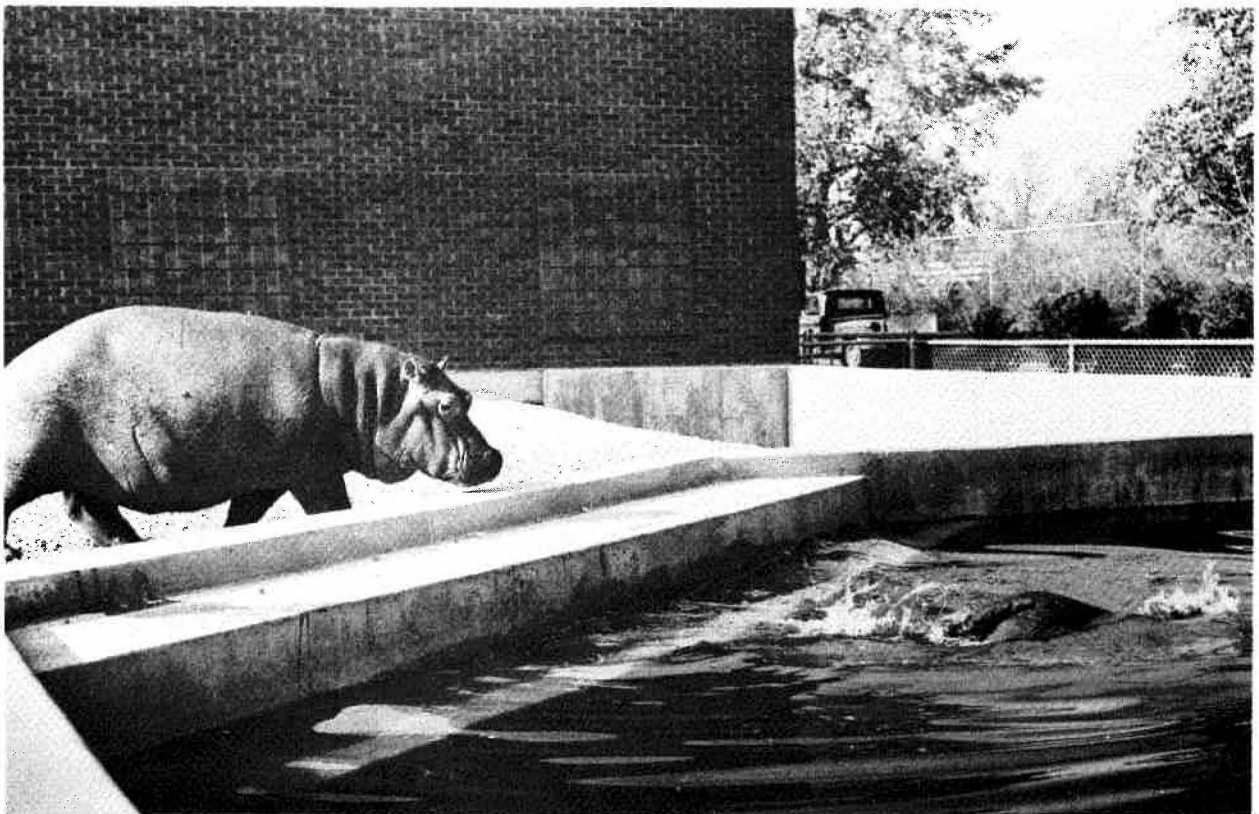


The giraffes as part of the collection of large mammals are always viewed with lasting interest





Janet and Duncan, the two Rhinoceros at the zoo, "Case the Joint" immediately upon being uncrated after their long journey from Africa. Obviously their brief discussion, pictured here, resulted in approving acceptance of their new northern home.



Newly arrived hippopotamuses take to this large private swimming pool.

Improvements - 1. Large Mammal House

The past year has been one of continuing progress, with completion of the addition to the Large Mammal House. Formally opened in May by the Lieutenant-Governor, the new section is occupied by a pair of white rhinoceroses, which were obtained from Africa and a pair of hippopotamuses, which came from Zoos in the United States. Calgary can now be considered as having a major zoo, because we display the four largest land mammals: elephant, rhino, hippo, and giraffe.

2. Tropical Aviary

The addition to the Tropical Aviary was commenced during the late summer and it is anticipated that this beautiful new structure will be opened in May 1967. Visitors here will be able to enjoy a new feature as there will be a restaurant which will command a view of tropical plants, waterfalls, miniature lakes, and tropical birds.

3. Classroom and Office Space

A new addition to the present restaurant and administration building includes a full-sized classroom with facilities for projecting films, slides and other teaching aids. Additional office space has also been provided.

4. Natural History

Several of the smaller dinosaur models have been repaired, painted and mounted on sandstone terraces behind the Fossil House.

Admission Charge - The City of Calgary authorized the establishment of an admission charge during the months of May through Sept. In 1966, this charge was not put into effect until the 1st of June and during the summer months, citizens of Calgary continued to support their Zoo and there was no decrease in attendance.

New Exhibits - Besides the rhinoceroses and hippopotamuses, some of the other arrivals during 1966 were: raccoon like-dog, tapir, giant anteater, patas monkeys, giant pouched rats and binturong. A total of 45 species in our zoo reproduced this year. A few of these were: yak, bison, zebra, mouflon, aoudad, bighorn, guanaco, muntjac, whitehanded gibbon, spider monkey, ring tailed lemur (twins), lion, cougar, black leopard, spotted leopard, jaguar, European wild cat, prehensile porcupine, hairy armidillo.

Future Plans - Plans for the construction of a Large Feline House are proceeding and building will commence as soon as final decisions have been made regarding the development of the Eastern End of the Island.

New Director - At the close of this my first year as Director I would like to express my thanks to the entire zoo staff, all members of the Zoological Society and the Parks Superintendent and various Dept. Supervisors and staff for all their help, encouragement and support which has helped me greatly in my efforts to make this a successful year.

Inventory

SPECIES STATUS AS AT DECEMBER 31st, 1966

	<u>Species</u>		<u>Individual</u>	
	<u>1965</u>	<u>1966</u>	<u>1965</u>	<u>1966</u>
Mammals	147	151	435	448
Birds	203	211	638	727
Reptiles	14	16	32	45
Fish	<u>1</u>	<u>1</u>	<u>12</u>	<u>56</u>
TOTALS	365	379	1117	1276

Accommodation for Live Exhibits are as follows:

Total area of buildings 62,218 sq. ft.  
Total area of pens & cages 40,650 sq. ft.  
Total area of enclosures for hoofed animals 90 acres



“Lady” adopts the one day old Black Leopard kittens June 8/1966. Calgary Zoo.

Both sections of this Division have experienced the busiest year yet. The energetic and cooperative approach of all staff members and employees throughout the entire season, made it possible to complete almost all Capital Projects, and carry out the Parks Maintenance Program, the Street Tree Planting Program, and the Insect & Pest Control Programs most efficiently and satisfactorily.

Without a proportionate staff increase 171 acres of additional parkland was maintained, and approximately 286 acres of parkland developed, or partially developed, with some seeding to be completed in 1967.

<u>MAN POWER:</u>	Parks Maintenance	41 permanent	309	Seasonal
	Parks Construction	<u>10</u> permanent	<u>86</u>	Seasonal
	Total	<u>51</u> permanent	<u>395</u>	Seasonal

In both sections a shortage of skilled help is apparent. This is the result of our limited establishment for permanent employees. The only answer to this problem is to recruit and train more men, particularly gardeners, foreman type and equipment operating personnel.

I wish at this time to express my sincere appreciation to all employees within the division, to the Superintendent and the office staff, and to the Supervisors, Foremen and employees of the other divisions of the Department for their cooperation and help during the past year.

MAINTENANCE SECTION

The year 1966 was characterized by a very late spring, and above normal rain falls well into mid summer. This resulted in the rapid growth of all shrubs, trees, flowers and particularly grass. With the new mowing units it was possible to cope with this situation. When we did get behind, the new "Lawn Groomer" proved to be the answer for picking up loads of grass clippings with hardly any hand work involved.

For the balance of the year, conditions were normal, as a matter of fact, fall conditions were so good, regular maintenance had to be carried out until the end of September. It was also possible to do many other important projects such as preparation of new shrub and tree planting sites. On a trial basis some 1700 trees and shrubs were planted in the fall.

In general it can be said, that the standard of maintenance in all our parks was very high. All men and equipment were fully occupied and utilized during the whole of 1966.

HIGHLIGHTS: Stanley Park.

The formal Rose Garden in this park was completely planted with an additional 400 Tea Hybrids and Polyantha Roses.

The old dressing rooms, and restrooms have been removed and the area around the new field house was turfed and beautified with some shrub and tree plantings.

Riley Park.

In this popular park the wading pool was completely renovated and the water level brought to a safe controlled depth of 18".



HIGHLIGHTS: In cooperation with the Dutch - Canadian Club, 10,400 Tulip Bulbs were planted in the large formal flower beds as their Centennial Project.

Bowness Park.

In this park, two new footbridges, a new boat dock and boathouse were built. The necessary landscaping around this area was also completed. In order to ensure orderly development of this large park, a master plan should be prepared as soon as possible!

Confederation Park. (East of 10 St. N.W.)

Hundreds of shrubs and trees have been planted in a large border along the entire north boundary, which will give this area back-ground.

A Centennial Emblem was constructed on the north slope. For dividing lines between the 11 white triangles 4" x 8" x 16" blocks were used. Then annual flowers in three different colors, orange, red and blue were planted. This looked very attractive during the summer.

Tree Planting as Centennial Project by Schools.

We assisted several schools with their worthy projects and planted a large number of trees in park areas and on boulevards adjacent to School Properties. And of course all Grade III pupils again were supplied with 8" to 10" size Colorado Spruce seedlings on Arbour Day.

TREE  
PLANTING  
IN PARKS

Tree planting was carried out throughout the City in numerous Parks, particularly at Glenmore Park, North Capital Hill Park, Centennial Park (East of 10 St. N.W.). Work has already been started to prepare another large shrub border along the South and East sides of the Centennial Park, to be planted in the early Spring of 1967. A total of 10,530 trees and shrubs were planted in parks exceeding the 1965 total by 2,616.

BOULEVARD  
TREE  
PLANTING

In Parkdale, Forest Lawn, Chinook Park, Glenbrook, Balmoral and Brentwood Districts, 2,992 Boulevard Trees and Shrubs were planted. The types planted were mostly Green Ash, American Elm, Cotoneaster and Villosa Lilacs. Tree and Shrub holes were dug under the 1965 - 1966 Winter Works Program.

TREE  
PRUNING

A systematic pruning system was adopted in all districts, which will eliminate the pruning of a small number of trees in any one block. In the case of requests by residents, where pruning is necessary, either the whole sub-district or at least one block will be pruned. The topping of larger trees has been kept to a minimum. Again, all young trees in Parks and on Boulevards have received the corrective pruning treatment.

TREE  
SPRAYING

The spraying of trees throughout the City on boulevards and parks to control various types of insects becomes more and more necessary. During the season five District Spray Units made every effort to remedy this problem, when it was required. The use of "Malathion" will be discontinued, because most of these insects are becoming immune to it. "Diazinon", a newer and more effective chemical will be used in 1967. Trials with this material have been carried out in the Civic Nursery and have proved satisfactory.

MOSQUITO  
AND FLY  
CONTROL

The mosquito and fly spraying program was very successful in spite of a very wet spring and early summer. An early start with both units has prevented mass breeding of mosquitoes. Golf Courses, large Parks and areas around sloughs have received priority treatment.

STATISTICS 1967

TREE & SHRUB PLANTING IN PARKS:

Trees ..... 5221  
Shrubs ..... 5309

REPLACEMENT, BOULEVARDS:

Trees ..... 3238  
Shrubs ..... 429

NEW PLANTING, BOULEVARDS:

Trees ..... 1908  
Shrubs ..... 1084

TREES AND SHRUBS PLANTED AT ELECTRIC LIGHT SUB STATIONS:

Trees ..... 50  
Shrubs ..... 152

TREE PRUNING, PARKS & BOULEVARDS:

Trees ..... 8097  
Shrubs ..... 4410

TREE HOLES AND SHRUB BORDERS PREPARED IN PARKS:

Tree Holes ..... (Fall 1966) ..... 1771  
Shrub Borders ..... (Fall 1966) ..... 32406 sq. ft

TREE HOLES PREPARED ON BOULEVARDS:

Tree holes ..... 2600

ANNUAL PLANTS PLANTED:

Annual, Flats ..... 2651  
Geraniums ..... 2459  
Dahlias ..... 2346  
Other Pot Plants ..... 4219  
Rockgarden Plants, Flats ..... 218  
Perennials Planted ..... 1902

LOAM USED IN ALL DISTRICTS: ..... 11,000 Cu. Yds.

GRASS SEED USED IN ALL DISTRICTS:

Fine Mix ..... 3260 lbs.  
Boulevard Mix ..... 150 lbs.

STATISTICS

MOSQUITO AND FLY SPRAY:

Oil .....	2700 Gallons
Korlan .....	4 Gallons
Baytex .....	125 Gallons

PEST CONTROL, TREE & SHRUBS:

Malathion .....	150 Gallons
-----------------	-------------

FERTILIZERS:

Elephant Brand .....	15 Tons
Presto .....	2900 Lbs.

NEW BUILDINGS:

1 New Depot .....	District #5
6 Portable Tool Sheds .....	For use in various Park Areas.

PICNIC TABLES:

6 Foot Light .....	75
7 Foot Heavy .....	25

CONSTRUCTION SECTION

This division in 1966 carried out the most extensive capital land development program ever undertaken by this department on all types of parks. Other work projects range from building moving, building demolition, building of break waters, floating docks, boat ramps, bridges, roads, parking lots, picnic tables, park benches, open fireplaces, barbeques, bleachers, horse jumps, etc., to the erection of all types of fences.

NEW LAND

DEVELOPMENT:

A total of 286 acres of new park land were developed during the year, with most projects being completed and others still to receive final treatment in 1967.

HIGHLIGHTS:

Confederation Parks System.

The Golf Course was the largest single project. This 107.39 acres site has been nearly completely fenced, graded, loamed and seeded including the boulevards outside the fence. Rough area loaming and seeding, tree and shrub planting, parking and clubhouse facilities, should all be completed by the 1967 opening date. During the construction phases of this project we encountered some difficulties, particularly with boggy soil and poor drainage conditions, and experienced three separate major washouts after seeding operations. At this point it should be stressed, that the path leading from the South to the North end, through the course, and designed for the use of students going to school, is not very practical, as a matter of fact is very dangerous and will interfere with golfers and the maintenance operations. Therefore I would like to recommend that it be closed.

Confederation Park East of 10 St. N.W.

On March 28th, we started with heavy equipment and made very good progress. Approximately 75 per cent of this large area of 51.81 acres has been loamed and seeded to grass, water services installed and a parking lot and road layed out and paved. The edges of the lagoon were stabilized with rockfilled 3' x 3' x 13' wire gabions, and a footbridge 6' x 36' in natural wood has been built. Areas to be completed in 1967 are the bottom land, both sides of the creek, the baseball field, the band stand area, the south road, a parking lot on the east side, and using large sandstones, build rock out-crops to blend into the landscape the six storm sewer outlets which unfortunately lead and drain into this park. Also extensive tree and shrub planting will be carried out in 1967.

Confederation Park Between 10th St. & 14th St. N.W.

A start was made in this section of the Confederation Park system by trenching the creek bed and excavating two large lagoons as a major feature to control flood waters. This area with 39.14 acres will receive continued development in 1967.

Confederation Park North Capitol Hill Section

The land development in this section of the System with 40.37 acres has been completed, including water services, with only a parking area, wading pool and tree and shrub planting to be done next year. For the first time, we used for land contouring large rubber tired earth moving units which resulted in a much faster operation. A large section of this park was left in its original state of well established prairie grass in order not to disturb many types of wild flowers and shrubs, which blend in very nicely with the rest of the park area.

WINTER  
WORKS  
PROJECTS

Under the 1965 - 1966 Winter Works Program a Bridal Path was laid out and completed in the South Glenmore Park area to accommodate members of the Olympic Equestrian Association and the public at large, who are interested in trail rides, etc. The same trails are also used during the winter months for Snow-Mobile and Ski-Doo activities. Many positive comments have been received in regard to this feature. In the same park other projects, such as roads, parking lots, boat ramps, breakwaters, boat storage, etc. were completed to serve the Parks Dept., Sailing School and Calgary's Sailors groups.

Also under the winter works program a boat dock, 20 bleachers (50 seats each), 8 open fireplaces, 36 barbeques, 12 park benches, and 6 floating docks have been constructed. Picnic site development and brush clearing projects were carried out at Bowness Park, Pearce Estate, Ogden Hill, Glenmore Park, Confederation Parks and Sandy Beach.

FENCING The Parks Dept. fencing crew was engaged fully throughout the entire year and completed a total of 60 fencing jobs (not including fence repairs), erecting all types of fencing for this Department as well as for the Engineering Dept. Installation costs were well under contractor prices, with the exception of some projects carried out under the Winter Works Program. With contributions from Senior Governments this will balance out the higher costs.

SUB - DIVISION DEVELOPERS In the Sub Divisions of Lakeview, Willow Park, Maple Ridge, Acadia, Brentwood, Charleswood, University Heights, Thorncliffe, North Haven, Varsity Acres, Mayland Heights, a total of 3.1 miles of boulevards and approximately 7 acres of park land was landscaped as decorative Parks.

NEW EQUIPMENT New items of equipment obtained in 1966 for both Maintenance and Construction Divisions were:

- M 1 - Tractor 9502 with Front End Loader and Backhoe
- M 1 - Tractor 9520 with Front End Loader
- M 6 - ½ Ton Pick Up Trucks for District Foreman
- M 1 - 7 Gang Park Masters
- M 2 - 5 Gang Park Masters
- M 3 - Garden Tractors Gravely with Attachments
- M 1 - Lawn Groomer
- C 3 - Utility Trailers
- C 1 - Rototiller Tractor Drawn
- C 1 - Rototiller Self Propelled
- C 6 - Section Harrows
- C 1 - Lawn Building Machine

DEVELOPMENT STATISTICS 1966

Number of Land Development Projects .....	117
Number of Other Projects including fencing .....	120
Confederation Golf Course .....	101 Acres
Decorative Parks .....	81 Acres
Athletic and Community Parks .....	46 Acres
Landscaping for Engineering Dept. ....	58 Acres
Total	<u>286 Acres</u>
Boulevard Seeding .....	3.1 Mile
Loam Contract .....	166,077 Cu. Yds.
Grass Seed .....	98,250 Lbs.
Park Fencing .....	
4 ft. Chain Link .....	4090 ft.
6 ft. Chain Link .....	12210 ft.
10 ft. Chain Link .....	600 ft.
12 ft. Chain Link .....	280 ft.
16 ft. Chain Link .....	600 ft.
Post & Cable (4" x 6" x 5' Posts) ....	12110 ft.
Mine Props & Cable .....	7357 ft.
Relocation (Mine Props for Eng. Home) ...	1000 ft.

Engineering Dept. Fencing:

4 ft. Chain Link .....	600 ft.
6 ft. Chain Link .....	17350 ft.
Post & Cable (4" x 5" x 5' Posts) ...	1000 ft.
Fence Relocation 6 ft. Chain Link ...	2000 ft.
Airport Fencing . 6 ft. Chain Link .....	1600 ft.



May '59 Canoe races at Bowness Park

REPAIR SHOPS:

During 1966 there was a record demand on this section to maintain and repair all the many types of equipment and machines used throughout the Department. Also, repair work was performed on fifty one various machines belonging to the Engineer's and Electric Light Departments.

As an indication of the work involved, there are 936 various types of sprinklers and 147,025 feet of hose in use. Over 670 tires on pieces of equipment require attention; 300 cutting reels, 88 knives for mowing equipment, 66 rotary mower blades and hundreds of hand tools such as grass shears, grass hooks, scythes, border shears, pruning shears, shovels, saws, axes, branch loppers, etc. were sharpened for use. Repairs and necessary maintenance to power mowers, motors, Gravelly tractors, pumps, air compressors, hand mowers, chain saws, lowering devices, golf ball washers, etc. was carried out. Emergency calls for repairs and maintenance in the field were many. The ordering of parts, supplies and equipment, the storage of same by the stores section, the issuing of tools and materials is a continuous process.

During the winter months necessary reconditioning and overhauling of machines and tools is carried out in readiness for spring and summer use, in addition to servicing the equipment in use during the winter for clearing snow, grave digging, rink flooding, brush clearing and other kinds of winter construction work.

Other specialized work carried out in the shop is the painting of various types of signs for use in parks, etc., and the making of special signs and plant labels from plastic with the printing being produced on a special engraving machine. Electrical repair work required on P.A. systems, amplifiers, tape recorders, etc., are also done by a member of the repair shop staff. The cutting of scores of keys and the recording of the many keys issued to individuals throughout the various sections of the Department is also a service performed by this section.

BUILDING MAINTENANCE:

Throughout the many areas of the parks system extensive repair work and painting was done on the various buildings and structures. In the six park districts renovations and painting of headquarter buildings, service buildings, restrooms and wading pools was carried out. Locations where much improvement was done were Riley Park, District 2 Headquarters, Prince's Island, Munro Park, Tuxedo Park, Capitol Hill Park, District 4 Headquarters, Rotary Park, Sandy Beach, District 5 Headquarters, Stanley Park, Elbow Park, Glenmore Park Boat dock, Haysboro Park and Bowness Park.

At Bowness Park two new bridges were constructed in addition to a new boat house and dock. Two bridges were also built in the new Confederation Park.

Bleachers and some buildings were repaired and painted at Foothills, Glenmore, Mewata, Renfrew and Bridgeland and also at the Bowness Recreation Centre. At the Shaganappi Golf Course the new service building and lunch room was completed and the pro-shop was painted inside and out.

The Chapel at Union Cemetery was completely renovated inside and out as well as the office, lunch room and waiting room. At Queen's Park Cemetery the chapel and service building was completely painted.



Painting and renovating of some buildings and heating frames at the greenhouses and Glenmore Nursery were carried out and two new cold frames were constructed.

Six portable Panabode type tool houses and three new trailer cabooses were built during the year.

At ten of the twelve City Swimming Pools, necessary painting of the pool tanks, filter tanks, dressing rooms, boiler rooms, showers and the outside of buildings and fences was carried out at opportune times. Repairs to hand rails, diving towers, windows, doors and locks at the swimming pools were also done.

The comfort stations, showers, picnic shelters, and picnic tables at the St. Patrick's Island camp ground received needed repairs and painting.

Buildings at St. George's Island Zoo, such as the lion house, various pens, monkey house, children's zoo, tropical bird and water fowl house were all painted. Needed repairs and painting of the Director's residence was completed also.

#### PLUMBING & WATER SERVICES:

During the year 27 new park services and sprinkler systems were completed. Fourteen other parks had services installed and sprinkler systems partially completed. Renovations and extensions were carried out at eight park locations. Six new rink connections were installed. Water, sewer and gas or hot water heating installations, as required, were made at the following buildings during the year, District 5 Headquarters, Bowness Boat House, Opera House at Heritage Park, Reader Rock Garden Service Building, Union Cemetery Chapel, Riley Park C Concession Building, Shaganappi Golf Course Service Building, Glenmore Nursery Service Building, New Greenhouse Unit and new cold frames.

A new water feed and drain system was installed at the Riley Park wading pool. At the new 9 hole golf course at Centennial Park an aluminum pipe sprinkler system was installed.

Plumbing repairs were done at the Rotary Park and St. George's Island wading pools. At the swimming pools a great deal of maintenance work was required, with major items being the installation of additional heat exchangers at several pools, and the installation of three new chlorinators. Vandalism necessitated the replacement of many fixtures at the camp ground and picnic area restrooms. Repair work was also done at the ice arenas, stadia and park service buildings as well as buildings used by the Electric Light System, Engineer's Department, Health Clinics, Police, Airport, and the City Hall and Administration Building.

As is customary and necessary all surface sprinkler systems were turned on in the spring and turned off and drained in the fall before freeze - up.

Quantities of Pipe Material Used Throughout the Year are as Follows:

	<u>New Services &amp; Extensions</u>	<u>Plumbing Installations &amp; Maintenance of Existing Lines</u>
Galvanized Pipe 4 "	2,855 ft.	
Galvanized Pipe 2 1/2"	26 ft.	
Galvanized Pipe 2 "	19,112 ft.	127 ft.
Galvanized Pipe 1 1/2"	16,489 ft.	79 ft.
Galvanized Pipe 1 "	16,298 ft.	337 ft.
Galvanized Pipe 3/4"	403 ft.	30 ft.
Galvanized Pipe 1/2"	245 ft.	
Copper Pipe 3 "		32 ft.
Copper Pipe 2 "		852 ft.
Copper Pipe 1 1/2"		730 ft.
Copper Pipe 1 1/4"		111 ft.
Copper Pipe 1 "		1158 ft.
Copper Pipe 3/4"		594 ft.
Copper Pipe 1/2"		795 ft.
Black Pipe 3 "		44 ft.
Black Pipe 2 1/2"		132 ft.
Black Pipe 2 "		220 ft.
Black Pipe 1 1/4"		1859 ft.
Black Pipe 1 "		304 ft.
Black Pipe 3/4"		1016 ft.
Black Pipe 1/2"		263 ft.
Black Pipe 3/8"		88 ft.
Soil Pipe 4 "		352 ft.
Soil Pipe 3 "		38 ft.
Soil Pipe 2 "		65 ft.
Water Main 10 "	40 ft.	
Water Main 6 "	319 ft.	
Tubing 3/8"		42 ft.
Tubing 1/4"		74 ft.
Plastic Pipe 1 "	1200 ft.	
Plastic Pipe 3/4"	262 ft.	
Cast Iron Pipe 4 "	480 ft.	

WEED CONTROL SECTION - G. Van Reekum,  
Weed Control Officer

WEED CREWS:

During the period from May 2 to November 11, we had up to six cutting crews mowing and cleaning up tall grasses and weeds in the various districts of the city. Each cutting crew was equipped with scythes, rakes and other hand tools and one or two Gravely type mowers with three foot cutting bars. During the very busy months of July and August our cutting crews were very hard pressed to keep up with requests from the public for weed control on both private and public owned land.

We also used four to five Ferguson tractors equipped with six foot cutting bars, which were mainly used for weed control and the mowing of grass along rural road sides and on large undeveloped land areas.

SPRAYING:

We also operated three spraying units equipped with 200 gallon tanks which were mounted on flat-deck trucks. Two of these spraying units sprayed a 2,4-D mixture on some 3000 acres of park land and undeveloped areas, and along rural road sides. During the optimum spraying period of June and July, our 2,4-D spraying units were employed on a double shift system. The early morning spraying proved to be most efficient because of the low wind conditions.

Our third weed spraying unit was mainly used for the application of a sterilant type of weed killer for complete vegetation control lasting up to five years. This sterilant was applied on undeveloped boulevards, along main thoroughfares, on undeveloped city owned vacant lots and bus loops, and in the ditch bottoms along rural roads. In the latter case, we, in conjunction with the Engineering Department intend to prevent weed growth in these ditch bottoms in order to speed up the water flow and subsequently improve the drainage of low lying areas.

WEED INSPECTORS:

We employed three weed inspectors on a temporary basis during the May to September period. Each Weed Inspector covered one-third of the total city area. Their main activities consisted of checking out weed complaints received by our department, mailing weed notices to the offending parties in case of weedy private properties, and writing out directives to our Weed Control foremen in cases of weedy city properties. A total of 1,224 Weed Notices were issued during 1966. Our city crews cleaned up a total of 220 privately owned properties.

BUDGET:

It was evident over the past year, that our Weed Control Section could not deal adequately with the number of requests by the public. An increased budget for 1967 will be required in order to have at least a minimal type of weed control program in operation.

CIVIC GREENHOUSES

During 1966 a new greenhouse was erected with a total area of 1,500 sq. feet of glass. A glass partition in this greenhouse gave an area of 650 sq. feet which is used for propagation. The propagating beds are equipped with automatic heating cables and an automatic misting system to supply humidity.

Two new heated frames were constructed to provide more area for bedding plants, and also to replace some of the older unheated frames.

A large centennial design was laid out on the hillside of Confederation Park. This emblem measuring forty feet across was planted up with red, blue and orange flowers. In the spring of 1967 this emblem will be planted up again including the dates of 1867 - 1967.

In general, the display of flowers in the various parks were very good considering the weather was very cool and wet during the late spring and early summer.

Plants Supplied to Civic Parks, Cemeteries and Other Locations:

Annuals .....	196,560
Rockery Plants .....	13,000
Geraniums .....	3,553 pots
Petunias Double .....	4,200 pots
Dahlias .....	2,800
Cannas .....	50
Tropical and flowering display plants .....	7,776
Assorted pot plants .....	920
Hanging Baskets .....	60
Boxes of Tulips .....	172

CIVIC NURSERY

During the spring of 1966, 10,417 trees and 6,974 shrubs were shipped to various parks and boulevards for planting. A total of 61,516 sq. feet of sod grown in the Nursery was supplied to the various districts during the year.

The annual Arbour Day distribution of spruce seedlings was carried out again this spring in co-operation with Calgary Public and Separate School Boards and the Provincial Government. A total of 7,395 Colorado Spruce seedlings, each packed in a water proof bag were distributed to Grade III pupils throughout the city schools. These seedlings are a gift from the Provincial Department of Agriculture, Field Crops Branch.

A total of 2,000 assorted perennials and 190 peonies were supplied to the various parks, Cemeteries and other locations.

The trial beds of roses located at Glenmore Nursery provided a beautiful show of color this summer. Included in this display was the Centennial Rose and also Miss Canada developed by a Canadian hybridizer and donated by the Calgary Rose Society.

A total of 1,535 lineal feet of grass verges were sown on lateral roads in the Civic Nursery, to improve the appearance of the grounds.

## TROPICAL AVIARY

### Easter Display

The main flowers for this special show were Easter Lilies, Hydrangea, Cineraria, Primula obconica, Kalanchoe, and Tulips. Again, as in past years, we planted 50 white Easter Lilies in the form of a cross, about 12 feet long and 9 feet wide. The bed area immediately around the cross was planted with 65 pink Hydrangeas, which were kept 4 to 6 inches below the blossoms of the Lilies, which stressed the appearance of the cross. We planted the area behind the little pool in the East house with Lilies and 37 pots of Tulips. Each color was grouped separately. On the South bench, we had a display of 120 colorful Cinerarias, 170 red Kalanchoe and 24 red Impatiens. This Easter Display was again a great attraction for many visitors.

### Thanksgiving Display

For this occasion, a visitor could see colorful flowers such as Gloxinia, Celosia, Tuberous Bogonis, Fuchsia, Primula obconica and Hibiscus. The very rare and interesting blossoms of the passion plant could also be seen during the month of October, as well as beautiful flowering orchids.

The main Thanksgiving show was held in the West House. It consisted of an altar, decorated with fruit, vegetables, corn, grain and flowers. A 12 by 12 foot backwall of an arch-shaped chapel with old fashion colored windows was placed right behind the altar. This 'chapel' was made from plywood and the surface was painted as an imitation brick wall. The area immediately in front of the altar was planted with Ferns, Asparagus, and blue Browallias.

Many photographers, amateur as well as professional took advantage of this unusual sight.

### Chrysanthemum Show

The most colorful and largest show of the year was undoubtedly the 'Mum Show', which was held in the East House during the month of November. There were about 540 plants in 20 different varieties.

The two ground beds in the center of the house were planted with 325 large Chrysanthemums, each plant had 2 to 3 large ball-shaped blooms. The taller plants were placed in the middle and the shorter ones around the edge of the bed.

We also planted behind the small pool, a group of tall spray mums with Asparagus sprengery as an edging. The 120 Princess Ann pot mums in three different colors were placed in the center of the south bench, as well as on the north corner bench. Many visitors were delighted to see such a mass of colors in one place, but the severe weather conditions also kept many from coming down.

### Christmas Display

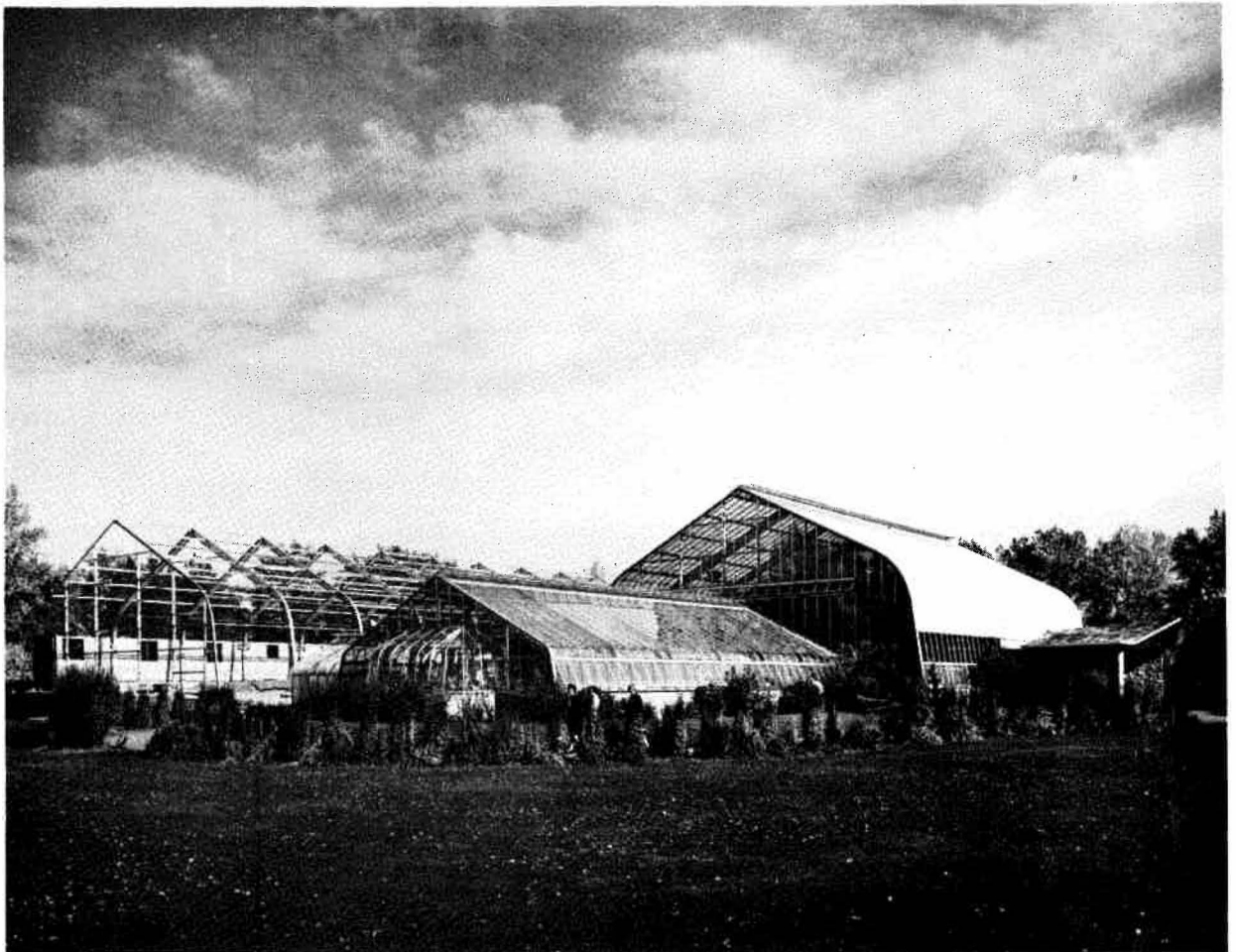
After the Chrysanthemum Show, we started to decorate the East and the Main House with the famous red, white and pink Poinsettias.

Joel Roberts Poinsett who became in 1825 the first U.S. Minister to Mexico, introduced this plant from Mexico to the United States. The large red oracts were a symbol for Christmas only in Central America for many years, but the *Euphorbia pulcherrima* has now many more admirers throughout the world.

Beside a large group of Poinsettias in the East and the Main House, we also had Cyclamen, *Primula obconica*, *Gesneria cardinalis*, pot mums, and orchids on display. The largest number of Poinsettias could be seen immediately around a 12 foot decorated Christmas tree in the East House.

#### TROPICAL AVIARY EXPANSION

A start was made this summer on an addition to the Tropical Aviary. This will add another 11,000 sq. feet of area to the existing complex. A tea room will be located between this addition and the existing Conservatory. A large waterfall will be created in one corner and a small stream will run into two pools containing water lilies and other aquatic plants.



Tropical aviary with new addition being added.

CEMETERIES - M. Barraclough, Manager

During 1966 a number of physical improvements were carried out within the cemeteries. These much needed improvements resulted in restoring an atmosphere of care which in some areas had begun to almost disappear.

At Queen's Park Cemetery no great improvements were required as this cemetery has not yet begun to age and needed care is applied at all times thus maintaining a consistently attractive appearance. Of assistance in this regard is the steady development of the flat marker section along the north side which is resulting in a pleasant sward of green grass which is much more economically maintained than are those sections where upright memorials are permitted. Land area is being conserved in this cemetery by consistently promoting the practice of two burials in a single grave. Also, as cremations are becoming more accepted this is helping to conserve burial space.

Paving of the main roadways was completed this year and it is planned to complete the remaining connecting links next year. The chapel and service building were completely painted outside which improved its appearance greatly. Planting of trees along the north boundary was continued and eventually a buffer will be realized. During the past summer an unusually high water table resulted in several inches of water seeping into the vault under the chapel. It is hoped that this is an abnormal occurrence and that perhaps the proposed installation of the underground storm drain through the cemetery will carry off this excess water in future.

In the Union Cemetery, which is our oldest cemetery a start was made to upgrade its appearance and erase some of the ravages of time. A new entrance was constructed to the basement under the cottage and the front of the building was improved by the creation of shrub and flower beds and a grass verge. The inside of the building was repainted and an unnecessary partition removed to provide an attractive waiting room adjacent to the caretaker's office. New floor covering was put down and some suitable furniture obtained. The roadway past the front of the building was paved as well as the parking area on the north side. Further improvements in the workmen's portion of the building are planned for next year.

The old chapel and vault were extensively renovated both inside and out and once more made usable. Electricity and gas heating were installed and the approach road improved. A start was made on the removal of an excess of old shrub beds in various sections where shrubs have become overgrown and unsightly and the beds have gradually encroached upon the grave plots. This work will be continued in the spring. Many old curbings and monuments have deteriorated to the point where they should be removed and an effort will be made to contact the owners who will be requested to arrange for repairs or agree to their removal. Removal of curbings will be most desirable as this will be an assistance in eliminating obstacles to easy maintenance of the turf.

Similar problems exist in the Burnsland Cemetery with regard to shrub beds and curbings, and appropriate remedial action is planned for next year in this area as well. The remaining burial area in the Field of Honour in this cemetery was laid out in blocks of grave lots and the area loamed and seeded. An access road around this portion was graded out and base gravel installed and it will be finished next year. Also planned is a new service and equipment storage building in this cemetery to replace the old frame garage which was completely inadequate. Work on the building has been started.



A new service and equipment storage building is in the planning stage to provide adequate work facilities in maintaining the St. Mary's and Chinese Cemeteries as well as providing sanitary facilities for the men and the public at these locations. During the past year the hill on the south end of the Chinese Cemetery was brought down to grade and the surplus earth was used to raise the level of the land in the south portion of the new extension to St. Mary's Cemetery. A considerable amount of additional fill is needed here to raise this area to the desired grade. This new portion of St. Mary's has been developed to some extent by the planting of a heavy shrub border along the north side and some trees were planted along the east fence and also along the south west boundary. Roads have been graded out and base gravel installed and a water line brought in from 1 St. S.E. Several blocks of graves have been laid out and a number of non-care graves have been used. The south and east sections of this addition have been restricted to flat markers as the result of a petition from nearby residents.

It is planned to improve the entrance to the main St. Mary's Cemetery by having much needed paving work done. A concentrated effort is planned to improve the appearance of all cemeteries in this complex by applying improved methods of renovation and by the use of better grass mowing machines.

Burials During the Year are as follows:

Queen's Park	994
Union	146
Burnsland	374
St. Mary's	273
Chinese	<u>35</u>
	1,822



Part of the Chinese Cemetery



A portion of Queen's Park Cemetery

## GOLF COURSES

### SHAGANAPPI

Due to early fine weather the course opened on April 1st, however it was necessary to close the course down for the winter on Oct. 31st which was about a week earlier than in the previous year. The number of players paying green fees increased both in the senior and junior groups over the previous year with an over-all increase in revenue from this source of \$8,407.50. Season ticket purchases were down from 1965 slightly in the over-all total with a very marked decrease in the couples group. Although the early fine weather did not last and quite a few wet days were experienced in May and June, the course was well patronized whenever the weather was favourable.

General condition of the course was good and many favourable comments were received. As a result of frequent requests, reserved starting times was instituted on weekends and holidays with good results.

The course was improved with the completion of three more grass tees and next season should see the eighteen hole course complete with all grass tees. A good number of trees were planted at suitable locations throughout the course and this annual program is now beginning to add greatly to the appearance of the landscape. Gas, water and electric services were connected to the equipment service building and this structure was also painted.

### LAKEVIEW

Play at this par 3 course started on April 8th and ended Oct. 10th. During the year over six thousand more players used the course than there did the previous season. The turf was kept in good condition throughout the year and no major improvements were required. Fencing of the course with chain link was completed during the winter prior to the opening of the course.

### CONFEDERATION

Construction of this new course under the direction of Mr. O. Anderson, advanced to the stage where all tees, greens and sand traps were completed and all fairways seeded to grass with a complete water system installed. This coming spring will see an extensive tree planting program carried out and the construction of a clubhouse, with the course being expected to open during the month of August.

### MAPLE RIDGE

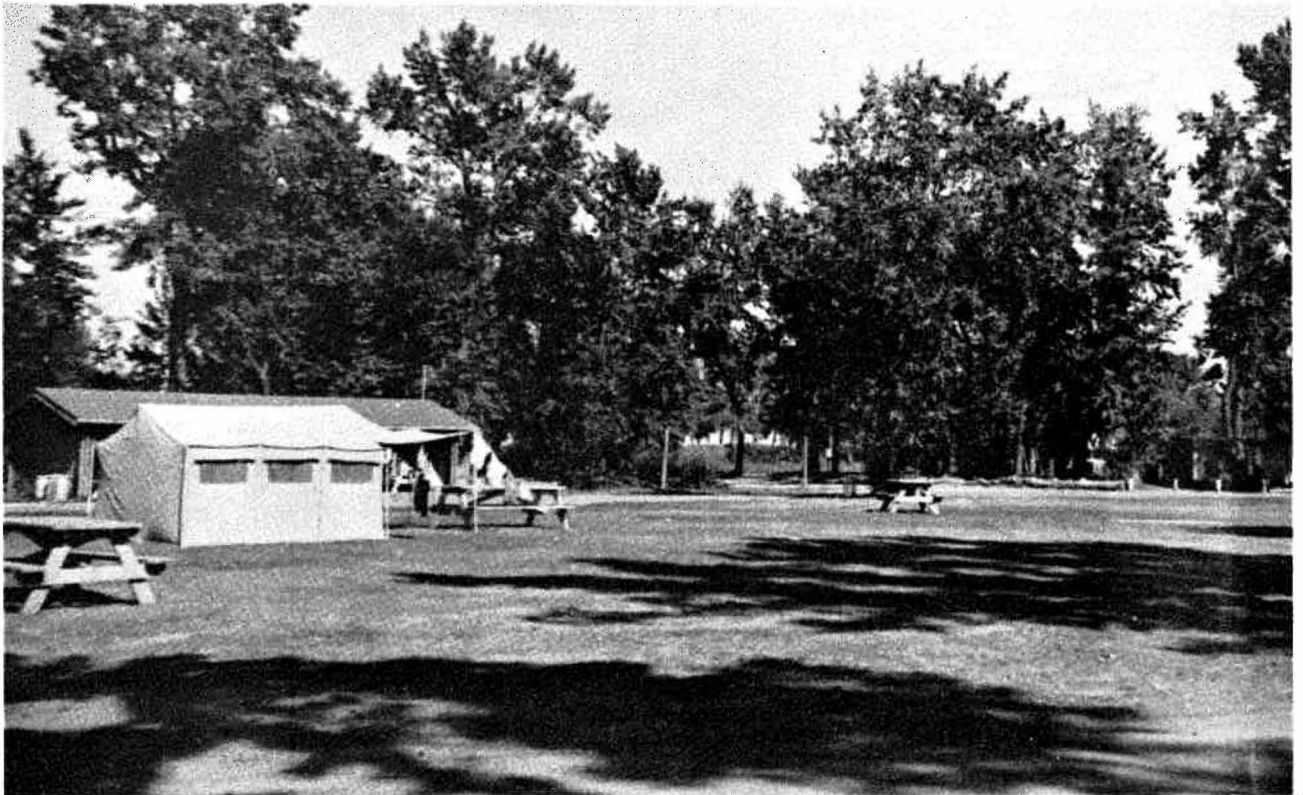
A fourth public course is now being planned in this subdivision on land donated for the purpose by the Kelwood Corporation, land developers in this area. Construction is expected to commence in 1967.

## CAMP GROUND

Registrations at St. Patrick's Island Camp Ground during 1966 numbered 10,999 which was slightly lower than the previous year. All campers were accommodated this year on the island even during Stampede week. This was made possible by enlargement of the camping space by filling and reclaiming the extreme west end of the island, and covering the area with a layer of course sand.

Additional wash rooms were installed at this end and it is hoped improvements can be made to these facilities and some of the other older units next year. A start was made on reclaiming additional land space on both sides of the entrance road by filling and levelling, and continuation of this work will be initiated next year.

The present operator's lease will expire this year and tenders will be called during the winter for another three year's operation. Much credit is due to Mr. L. Florence who has energetically and efficiently operated the camp ground during the past three seasons.



St. Patrick's Island Camp Ground before the crowds of visitors move in.

PROGRAMS

SUPERVISED PLAYGROUNDS

Thirty supervised playgrounds were operated in the summer of 1966. Nineteen were located in school premises, seven at community buildings, two in City owned facilities, and two as joint agency projects. These being, one at Renfrew Boy's Club and the other at Victoria. With a more specialized staff a much broader program was offered. The majority of part-time staff employed in this program were university students and they attended a two week training course in June. The 1966 Playground theme was "The West Indies" and this provided many interesting programs and special events.

City wide highlights in the program were: - Cross Country Race, Play Day, Playground Stampede, Arts and Craft Display, Swim Meet. Children from Grade I and over were eligible for registration and the season operated from July 4th to August 26th.

Total Registration	5,351
Total Attendance	102,555
Total Participation	228,127

DAY CAMPS

Once again a marked increase in interest was observed in this program. Camps were operated in three locations, Prince's Island, Bowness Park and Edworthy Park. Camps were open to both boys and girls from Grade 3 to 7. Again the staff employed were mostly university students and for the first time, a two week course for leaders was held on site. Each camp period was 9 days in length with one sleepout included. With more qualified leaders employed and with additional leadership training, a much broader and interesting program was offered. Each camp was filled to capacity.

Total Attendance - 354 (196 boys and 158 girls)

FALL & WINTER RECREATION CENTRES

Again these programs were offered in two ten week periods. One before Christmas and the other after. Twenty eight centres were in operation, being located mainly in Junior High Schools and High Schools. There was a marked improvement in registration and attendance figures. In adult programs several new courses were offered and the total number of adult courses numbered 25.

Special Group Programs were put into effect on a trial basis and included the following city wide groups:

- Volleyball Association
- Basketball Association
- Track and Field Club
- European Handball Association
- Gymnastic Club

Children's programs continued to be very popular with a marked improvement in leadership standards and additional activities being offered.

January - April                      9 - 12 years

Baton  
Crafts  
Group Games  
Scottish and Country Dancing  
Tumbling  
Cheerleading  
Tap Dancing  
Judo  
Brownies  
Irish Dancing  
Numbered registered ..... 3,050  
Total Attendance ..... 20,105

Teen Program                      13 - 18 years

Badminton  
Basketball  
Social Dancing  
Volleyball  
Teen Night  
Numbered registered ..... 1,170  
Total Attendance ..... 6,224

Adult Program

Badminton - free play	Leathercraft
Bridge	Men's Conditioning
Mosaic Crafts	Rugby Conditioning
Oil Painting	Ceramics
Modern and Social Dancing	Charm and Poise
Millinery	Chinese Painting
Dressmaking	Plastic Crafts
Golf	Interior Decorating
Method Acting (Drama)	Mosaic Tile Craft
Sailing	Hostess Course
Tennis	English Smocking
Ladies Keep Fit	Ladies Basketball
	Fishing

Adult Program

Number registered ..... 2,588  
Total Attendance ..... 17,871

TOTAL REGISTRATION - ALL PROGRAMS 6,817  
TOTAL ATTENDANCE - ALL PROGRAMS 44,200

September - December 1966

Children Registration..... 3,091  
Children Attendance ..... 20,690

Adult Registration..... 2,591  
Adult Attendance ..... 16,205

Teen Registration ..... 1,147  
Teen Attendance ..... 6,281

In the September to December session, fencing and jui jitsu were added to the Adult Program.

Total Registration ..... 6,829  
Total Attendance ..... 43,176

## ATHLETICS AND FACILITY OPERATIONS

### FACILITIES:

Again, during 1966, there was an increase in recreational facilities available for use by the Public.

The operation and maintenance of these facilities constitutes a major part of the work performed by this section.

The following list shows the number and variety of Recreation facilities available.

Swimming Pools - OUTDOOR	8
Swimming Pools - INDOOR	4
Stadia and Athletic Parks	6
(this includes tracks, football and soccer fields)	
Community Parks with Baseball Back Stops	120
Playgrounds with Tot-Lot Equipment	152
Community Hockey Rinks (natural)	93
Community Pleasure skating rinks (nat.)	147
Artificial Hockey Rinks (uncovered)	
City operated	1
Artificial Ice Arenas - City operated	3
Speed Skating Oval (natural) 333 1/3 met.	1
Fastball Park - City operated	1
Rugger Fields - City operated	2
Tennis Courts (4 courts at each location)	
City operated	3
Field Hockey Fields - City maintained	1
Cricket Pitches - City maintained	2
Wading Pools	10
Playgrounds Supervised	30
Winter Recreation Centers	28
Summer Day Camp sites for children	3
Sailing School Facility for Adults and Children	1

### CITY OPERATED ICE RINKS:

The two natural ice rinks at Bowview were operated only during the months of January, February, and March. South Calgary outdoor artificial ice rink was operated for the full winter season.

Foothills and Glenmore indoor artificial arenas were in use for eight months each with Foothills being used an additional two and one half months in the summer also, to accommodate the summer figure skating school. Again all ice facilities were used to capacity. The opening of Renfrew Arena in January, 1967 will no doubt alleviate some of the overcrowding of our present facilities.



RECORDED NUMBER OF HOCKEY GAMES:

Foothills Arena	1,052
Glenmore Arena	1,063
South Calgary	296
Bowview ( $\frac{1}{2}$ season only)	<u>201</u>
TOTAL	<u>2,612</u>

The participation figures at the Indoor facilities were as follows:

ACTIVITY	GLENMORE ARENA	FOOTHILLS ARENA
Calalta Figure Skaters	5,362	4,326
Public Skating (all ages)	9,163	16,432
Public Skating (adults)	2,307	3,427
Mothers and Pre: school Skaters	223	173
Hockey Players	17,489	20,169
Hockey Game Spectators	17,200	27,925
Misc. Events Spectators	630	-
Special Events	-	2,147 U.A.C. Frosh Dance
TOTAL PARTICIPATION	<u>52,374</u>	<u>74,599</u>

The Summer Figure Skating School, operated at Foothills Arena for the second summer was again a success. Registration totalled 132 students, not counting the adult dance session. Nine skating professionals were available for instruction and the high pass percentage on all tests indicates the high standard of instruction maintained.

ATHLETIC FIELDS:

All fields were again heavily used during 1966. Because of the large number of games at most locations, the fields cannot be given enough rest. This makes the maintenance an extremely difficult and specialized job.

The following list will give an indication of the number of events:

	SOCCER	RUGGER	FOOTBALL	TRACK	SPECIAL EVENTS
MEWATA	37	1	38	13	2
FOOTHILLS	37	1	32	-	-
GLENMORE	22	3	31	8	1
BROADVIEW	63	1	1	-	14
KINGSLAND	-	154	9	-	-
RENFREW	CLOSED	DURING	1966	FOR	REGRADING
TOTALS	159	160	111	21	17

In addition to the above, the field hockey group were granted a limited use of the Stanley Park field hockey pitches, and the Calgary fastball association used the Renfrew Fastball diamond on a seasonal basis.

COMMUNITY BASEBALL & FOOTBALL:

This Department schedules the use of all City, Community and School Board diamonds. A large portion of volunteer organized recreation in Calgary consists of fastball, and in maintaining and scheduling facilities the Parks and Recreation Department makes a much appreciated contribution.

The following diamonds were used during 1966:

Public School Diamonds	167
Separate School Diamonds	34
Community and City Diamonds	<u>89</u>

TOTAL 290

### SWIMMING POOLS:

The Public use of swimming pools during the summer decreased slightly during 1966, but increased in the winter. Inglewood and Acadia pools opened late in the summer owing to the construction of enclosures for these two pools.

Calgary now operated four indoor pools and eight outdoor pools. An additional outdoor pool is planned for opening in 1967.

Demand for swim instruction increased considerably, and all classes offered were filled to capacity.

SWIM REGISTRATION 1965 1966

#### CHILDREN

Beginners	3,789	4,838
Juniors	1,548	2,648
Intermediate	813	1,299
Senior	307	539

#### ADULTS

Beginners	514	1,164
Juniors	264	555
Intermediate	123	300
Senior	<u>72</u>	<u>176</u>
	7,432	11,519

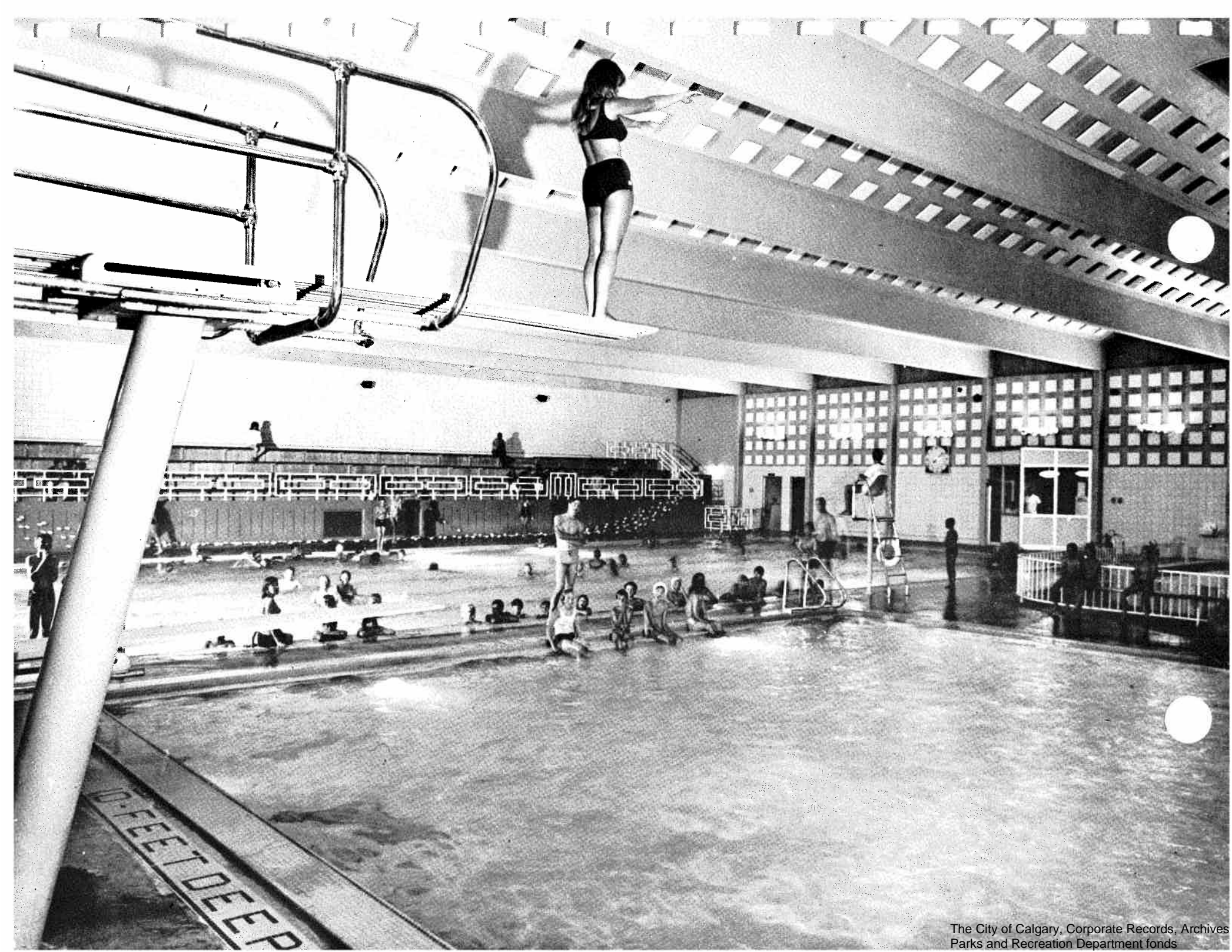
#### ROYAL LIFE-SAVING AWARDS PASSED

	1965	1966
Elementary Certificate	1	2
Intermediate Certificate	13	11
Junior Art. Respiration	2	26
Senior Art. Respiration	18	77
Bronze Medallion	95	125
Bronze Cross	12	15
Award of Merit	7	25
Distinction	-	5

In addition to the above a very successful competitive swimming and diving program is sponsored by the City at all pools.

Indoor pools were rented during the winter in off peak hours, to such institutions as the University of Calgary, Mt. Royal College, and the Jewish Community Council of Calgary.

A number of special events and swim meets were held at various pools.



COMPARATIVE STATEMENTS 1965 & 1966 ATTENDANCE & REVENUE

1965 ATTENDANCE & REVENUE RETURN

Date OPENED: May 22, 1965

Date CLOSED: Sept. 6, 1965 = 108 days

<u>POOL</u>	<u>NUMBER OF DAYS</u>	<u>ATTENDANCE</u>	<u>REVENUE</u>
Mt. Pleasant	108	28,370	\$ 4,312.66
South Calgary	108	27,382	4,465.06
Bowview	108	30,613	4,549.47
Millican	108	19,880	3,059.76
Bridgeland	108	27,538	4,746.57
Acadia	108	35,193	5,167.51
Forest Lawn	94	35,745	5,402.06
Stanley Park	108	49,708	8,453.61
Inglewood	108	23,083	3,607.99
Highwood	108	40,930	6,492.26
Killarney (Jan. 1-Apr. 26)	130	49,069	
(May 8-Sept 12)	114	75,229	
(Sept 25-Dec. 31)	98	16,942	28,692.15
Foothills (June 2-Sept 12)	103	61,800	
(Sept 25-Dec. 30)	98	18,148	18,062.93
		<u>539,630</u>	<u>\$97,012.03</u>

1966 ATTENDANCE & REVENUE RETURN

Date OPENED: May 22, 1966

Date CLOSED: Sept. 6, 1966 = 108 days

<u>POOL</u>	<u>NUMBER OF DAYS</u>	<u>ATTENDANCE</u>	<u>REVENUE</u>
Mt. Pleasant	108	22,685	\$ 3,308.15
South Calgary	108	26,503	4,141.20
Bowview	108	25,722	3,668.10
Millican	106	16,256	2,635.55
Bridgeland	76	16,113	2,674.15
Forest Lawn	108	39,532	5,250.60
Stanley Park	108	46,721	7,657.65
Highwood	108	35,527	5,002.35
Killarney (Jan. 1-May 20)	140	48,725	31,236.62
(May 21-Sept 5)	108	64,068	
(Sept 6-Dec. 31)	117	24,053	
Foothills (Jan. 1-May 20)	140	42,326	31,155.04
(May 21-Sept 5)	108	59,132	
(Sept 6-Dec. 31)	117	23,771	
Inglewood (Aug. 1-Sept 5)	36	8,215	3,602.20
(Sept 6-Dec. 31)	117	5,757	
Acadia (June 18-Sept 5)	80	41,342	9,336.85
(Sept 6-Dec. 31)	117	15,928	
		<u>562,376</u>	<u>\$109,668.46</u>

### SAILING SCHOOL:

The addition of a training building on the South shore of Glenmore Lake was of great value to the operation of sailing lessons this year.

A basic sailing course for housewives was conducted during the afternoons in June with nineteen participants. Evening adult classes during June, July and August were taken in by 105 adults.

Junior classes were again offered during July and August, and a total of 291 children from ten years of age to sixteen received instruction in practical and theoretical aspects of sailing and water safety.

Again the City of Calgary patrol boat operated on the lake daily from May 16 to October 23, to ensure the safety of the general public and the school participants, during their boating endeavours. A total of 108 boats were rescued by the patrol.

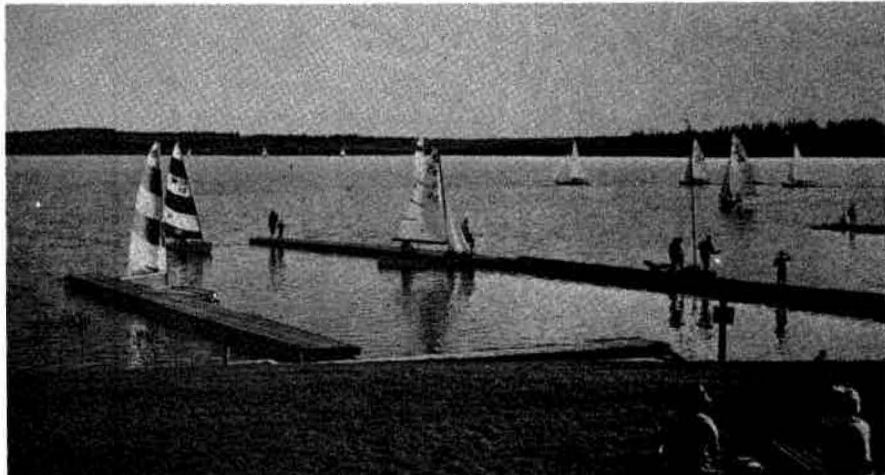
### TENNIS:

A growing interest was observed in this activity and eleven public tennis courts were in operation during the summer months. For the first time a municipal tennis instruction program was offered to the Public of Calgary for both children and adults. A part-time professional instructor was employed. This program proved to be very popular, with a total registration figure of 408.

### SPECIAL EVENTS:

The usual Indian track meet was conducted at the Stampede Grounds on July 15, for Indian children staying at the grounds.

Four band concerts were held at Bowness Park with the co-operation of the participating bands. This is a very worthwhile program which is enjoyed, by a large number of people during the Sunday afternoons in the summer.



STATEMENTS FOR EXPENDITURES AND REV. LS

ADMINISTRATION

1966

Appropriation: \$ 77,008.00  
 Expenditures: 77,079.08

Salaries	\$ 68,297.25
Travel Expense	181.00
Private Car Allowance	1,333.80
Subscriptions and Association Dues	223.66
Printing, Stationery and Office Supplies	4,133.67
Furniture and Fixtures	559.46
Staff Development and Training	<u>2,350.24</u>

\$ 77,079.08

ST. GEORGE'S ISLAND ZOO

Appropriation: \$ 231,545.00  
 Expenditures: 244,162.03

Salaries	16,053.30
Wages	130,816.05
Private Car Allowance	450.00
Rental - Equipment and Services	1,645.24
Rental - City-owned Vehicles	3,979.73
Maintenance - Buildings and Property	11,283.91
Maintenance - Facilities	6,637.08
Utilities	26,016.72
Commissionaires and Policing	1,601.00
Feed Supplies	29,724.61
Sundry Materials	4,317.53
Horticultural and Agricultural Materials	<u>11,636.86</u>

\$244,162.03



DISTRICT MAINTENANCE

1966

Appropriation: \$ 970,627.00  
 Expenditures: 1,013,388.66

Salaries	\$ 52,569.62
Wages	644,321.97
Rental - Equipment and Services	94,503.82
Rental - City Owned Vehicles	43,174.14
Mtce. - Buildings and Property	37,671.82
Mtce. of Water Services	33,838.11
Utilities	8,269.57
Commissionaires and Policing	4,055.41
Hydrant Water	19,999.92
Materials	86,277.78
Recoveries	<u>11,293.50</u> cr.

\$1,013,388.66

STREET TREE PLANTING

Appropriation: 44,740.00  
 Expenditures: 42,222.85

Wages	\$ 19,590.15
Rental - Equipment and Services	1,324.31
Rental - City Owned Vehicles	2,772.83
Materials	<u>18,635.56</u>

\$ 42,222.85

WEED CONTROL

Appropriation: 99,852.00  
 Expenditures: 111,913.40

Salaries	\$ 8,215.25
Wages	76,811.70
Rental - Equipment and Services	20,790.04
Rental - City Owned Vehicles	10,928.49
Materials	10,863.21
Recoveries	<u>15,695.29</u> cr.

\$ 111,913.40

ST. PATRICK'S ISLAND CAMP GROUND

1966

Appropriation: \$ 7,810.00  
Expenditures: 9,822.31  
Revenues: 10,462.78 cr.

Wages	\$ 1,530.24
Rental - Equipment and Services	531.49
Rental - City Owned Vehicles	225.24
Maintenance - Buildings and Property	2,416.67
Maintenance - Facilities	2,549.60
Utilities	2,266.75
Materials	<u>302.32</u>

\$ 9,822.31

CAMP GROUND REVENUE

Registrations - 34%	\$ 6,462.78
Basic Rental	<u>4,000.00</u>

\$ 10,462.78 cr.

HERITAGE PARK

Appropriation: \$ 39,559.00  
Expenditures: 48,904.39

Salaries	\$ 18,679.63
Wages	13,441.04
Private Car Allowances	360.00
Rental - Equipment and Services	1,949.51
Rental - City Owned Vehicles	1,492.24
Utilities	606.11
Insurance	5,317.22
Materials	<u>4,808.83</u>

\$ 48,904.39

SWIMMING POOLS

1966

Appropriation: \$ 415,852.00  
 Expenditures: 429,932.49

Salaries	\$ 7,536.06
Wages	281,781.70
Private Car Allowance	980.00
Rental - City Owned Vehicles	467.52
Maintenance - Buildings and Equipment	61,157.55
Utilities	62,592.95
Laundry Service, Clothing and Incidentals	4,951.80
Chemicals	12,107.61
Materials	9,162.30
Swim Instruction Registration	<u>10,805.00</u> cr.

\$ 429,932.49

ARENA & ATHLETIC PARKS

Appropriation: \$ 144,793.00  
 Expenditures: 131,621.82

Wages	\$ 91,132.77
Honorarium for Services	250.00
Rental - Equipment and Services	7,918.37
Mtce. - Buildings and Facilities	11,931.73
Utilities	22,697.01
Summer Skating Director Fees	1,000.00
Materials	7,035.23
Floodlighting Fees	1,172.00 cr.
Figure Skating Fees	<u>9,171.29</u> cr.

\$ 131,621.82

ATHLETIC SERVICES

Appropriation: \$ 28,148.00  
 Expenditures: 22,919.03

Salaries	\$ 6,909.61
Wages	13,658.03
Private Car Allowances	931.38
Equipment Maintenance	1,299.26
Rental - Building and Property	380.83
Materials	1,132.92
Tennis Court Fees	1,253.00 cr.
Sundry Recoveries	<u>140.00</u> cr.

\$ 22,919.03

SPORTS FIELDS, PLAYGROUNDS & RINKS

1966

Appropriation: \$ 210,357.00  
Expenditures: 222,103.29

Salaries	\$ 6,668.27
Wages	116,102.36
Private Car Allowances	720.00
Rental - Equipment and Services	7,531.17
Rental - City Owned Vehicles	8,896.53
Mtce. - Buildings and Facilities	21,561.86
Utilities	6,769.59
Hydrant Water	4,008.96
Community Floodlighting	37,311.00
Materials	13,511.80
Floodlighting Fees	<u>978.25</u> cr.

\$ 222,103.29

COMMUNITY PROGRAMS

Appropriation: \$ 141,263.00  
Expenditures: 134,825.47

Salaries	\$ 41,788.86
Wages	64,566.45
Private Car Allowances	3,967.70
Equipment Maintenance	2,858.99
Building and Property Mtce.	3,526.36
Utilities	1,792.83
Rental - Buildings and Property	9,011.14
Adult Recreation Instructors Remuneration	17,520.50
Materials	12,558.14
Adult Recreation Registration	21,085.50 cr.
Day Camp Registration	<u>1,680.00</u> cr.

\$ 134,825.47

GOLF COUR.

.66

Appropriation:	\$ 76,829.00
Expenditures:	69,968.66
<u>Revenues:</u>	66,666.25 cr.

Wages	\$ 39,776.57
Rental - Equipment and Services	6,454.42
Rental - City-owned Vehicles	1,973.60
Maintenance - Buildings and Property	1,857.97
Maintenance - Water Services	2,600.22
Utilities	2,743.40
Management Remuneration	5,125.04
Materials	7,302.95
Commissionaires and Policing	<u>2,134.49</u>

\$ 69,968.66

GOLF COURSE REVENUE - SHAGANAPPI - Opened April 1st, Closed October 31st.

GREEN FEES

982 Jr. @ \$1.00	\$ 982.00
63 Jr. @ 1.50	94.50
5,076 Sr. @ 1.25	6,345.00
8,928 Sr. @ 2.00	17,856.00
32,779 (9) @ .75	<u>24,584.25</u>

\$ 49,861.75

SEASON TICKETS

Gents & Ladies	\$1,755.00
Ladies & Senior	
Citizens (R)	1,470.00
Junior (R)	2,850.00
Man and Wife	<u>1,190.00</u>

\$ 7,265.00

LOCKER RENTS

112.00

GREEN FEES - LAKEVIEW PAR 3 - Opened April 8th, Closed October 10th.

18,855 @ \$ .50	<u>9,427.50</u>
-----------------	-----------------

\$ 9,427.50

\$ 66,666.25 cr.

PLANETARIUM

1966

Appropriation: \$ 28,978.00  
Expenditures: 29,358.92

Salaries	\$ 18,551.01
Travel Expense	544.82
Private Car Allowances	150.00
Rental Equipment and Services	235.84
Rental - City Owned Vehicles	497.16
Building and Property Maintenance	655.73
Utilities	336.51
Supplies	<u>8,387.85</u>

\$ 29,358.92

GRANTS

Appropriation: \$ 62,368.00  
Expenditures: 58,886.36

Calgary Community Recreation Association	750.00
Calgary and District Horticultural Society	500.52
Community Association Grants	25,728.26
Citizens Centennial Promotion	33,752.84
M.D. Rockyview Share of Centennial Project	1,117.00 cr.
Cont. Reserve Community Association Grants	<u>728.26 cr.</u>

\$ 58,886.36

CENTENNIAL COMMITTEE

Appropriation: \$ 27,200.00  
Expenditures: 24,647.80

Salaries	\$ 13,672.49
Travel Expense	748.00
Building Rental	4,482.50
Equipment Maintenance	36.00
Telephones, Telegrams	525.72
Remuneration for Services	86.00
Postage, Printing and Office Supplies	1,460.88
Sundry Contingencies	1,539.83
Office Machines and Equipment	26.08
Furniture and Fixtures	1,536.40
Sundry Services	<u>533.90</u>

\$ 24,647.80

CEMETERIES

1966

Appropriation: \$209,978.00  
 Expenditures: 205,018.86

Salaries	\$ 18,833.67
Wages	183,168.44
Private Car Allowances	860.00
Rental - Equipment and Services	31,627.63
Rental - City Owned Vehicles	5,645.39
Mtce. - Buildings and Property	6,970.30
Mtce. - Water Services	4,941.05
Utilities	1,135.49
Hydrant Water	6,000.00
New Equipment	1,917.02
Materials	7,679.42
Interest from Perpetual Care of Graves Fund	<u>63,759.55</u> cr.

\$205,018.86

Perpetual Care Receipts \$ 79,384.00

PARKS CONSTRUCTION

Appropriation: \$202,303.00  
 Expenditures: 310,313.61

Salaries	\$ 33,424.67
Wages	2,047.93
Telephones	149.60
Equipment Maintenance	1,949.43
Vehicle Rentals	5,249.28
Building Maintenance	1,533.26
Sundry Materials	3,095.27
Contribution to Capital	312,871.10
Charges Recovered from Other Budgets	<u>50,006.93</u> cr.

\$310,313.61



SUPPORTING UNITS

1966

REPAIR SHOP

Salaries	\$ 25,529.61	
Wages	100,090.40	
Equipment Maintenance	1,695.86	
Rental - City Owned Vehicles	7,598.26	
Rental - Buildings and Property	1,517.35	
Materials	59,140.89	
Tools	1,438.38	
Physical Inventory Adjustment	3,084.74	
Charges Recoverable	<u>193,970.11</u>	cr.
	<u>\$ 6,125.38</u>	Deficit

PLUMBING SHOP

Salaries	\$ 10,871.38	
Wages	95,948.79	
Rental - Equipment and Services	5,197.34	
Rental - City Owned Vehicles	11,298.88	
Rental - Buildings and Property	931.85	
Sundry Materials	61,829.23	
Physical Inventory Adjustment	701.95	cr.
Charges Recoverable	<u>188,774.73</u>	cr.
	<u>\$ 3,399.21</u>	cr. Surplus

NURSERY

Salaries	\$ 9,775.72	
Wages	32,824.12	
Rental - Equipment and Services	2,237.01	
Rental - City Owned Vehicles	1,909.85	
Mtce. - Buildings and Property	1,867.65	
Utilities	407.34	
Materials	23,177.24	
Physical Inventory Adjustment	24,083.24	
Charges Recoverable	<u>49,122.98</u>	cr.
	<u>\$ 47,159.19</u>	Deficit

GREENHOUSE

Salaries	4,623.67	
Wages	28,697.10	
Rental - Equipment and Services	410.40	
Mtce. - Buildings and Property	2,357.65	
Utilities	2,915.98	
Materials	4,798.87	
Charges Recoverable	<u>31,090.51</u>	cr.
	<u>\$ 12,713.16</u>	Deficit

SUMMARY OF APPROPRIATION and EXPENDITURES

TOTAL OF APPROPRIATIONS

\$ 3,019,210.00

1966

EXPENDITURES

Administration	\$ 77,079.08	
St. George's Island Zoo	244,162.03	
District Maintenance	1,013,388.66	
Street Tree Planting	42,222.85	
Weed Control	111,913.40	
St. Patrick's Island Camp Ground	9,822.31	
Heritage Park	48,904.39	
Swimming Pools	429,932.49	
Arena & Athletic Parks	131,621.82	
Athletic Services	22,919.03	
Sports Fields, Playgrounds and Rinks	222,103.29	
Community Programs	134,825.47	
Golf Courses	69,968.66	
Planetarium	29,358.92	
Grants	58,886.36	
Centennial Committee	24,647.80	
Cemeteries	205,018.86	
Parks Construction	310,313.61	
Repair Shops	6,125.38	Deficit
Plumbing Shop	3,399.21	Surplus
Nursery	47,159.19	Deficit
Greenhouse	12,713.16	Deficit
	<u>\$3,249,687.55</u>	

STATEMENT OF REVENUE

Bowness Park	12,079.59	cr.
Camp Grounds	10,462.78	cr.
Swimming Pools	109,668.46	cr.
Arena Rinks	36,121.93	cr.
Athletic Parks	5,055.17	cr.
Sundry Rentals	653.75	cr.
Cemeteries Fees	69,903.96	cr.
Golf Courses	66,666.25	cr.
	<u>\$ 310,611.89</u>	cr.

1966 CAPITAL BUDGET

<u>ITEM</u>	<u>APPROPRIATION</u>
Development of Parks and Playgrounds	\$ 681,926
Cemeteries Development	21,200
Golf Course Development - Shaganappi Improvement	\$ 6,700
- Confederation (2nd Phase)	<u>109,300</u>
	116,000
Fencing Parks and Playgrounds	35,791
Swimming Pools and Arenas -	
Renfrew Arena	\$ 420,025
Enclosing Acadia Pool	212,282
Enclosing Inglewood Pool	186,709
Miscellaneous Wading Pool Improvements	<u>38,000</u>
	857,016
New Buildings	82,179
Recreation Facilities	27,800
Vehicles and Equipment	88,550
Heritage Park	100,000
Centennial Planetarium (to complete)	754,000
	<hr/>
	\$2,764,462