



Bow to Bluff Public Realm Plan

Report Back // What we Heard
July 2017

Project overview

The City of Calgary is designing improvements to the corridor along the Northwest c-train line between the Bow River and McHugh Bluff. The starting point for the corridor design and engagement conversation was the Urban Design Framework that was developed by the community in 2011.

The goal of this engagement was to confirm the vision, design priorities and revitalization projects that were outlined by the community in 2011, and to obtain more specific details on the types of programs and design elements desired by the community.

Engagement overview

Two engagement channels were available to the public:

- An outdoor open house, which took place at the containR site on May 27 from 10 a.m. to 5 p.m.
- An online survey, which was available from May 27 to June 15

These activities were advertised through bold signs placed in the community, the project website, and Calgary Parks' social media feeds.

What we asked

Participants were asked to provide the following feedback at the in-person engagement:

Step A: Issues and Opportunities. Participants were asked to provide input on new considerations and ideas that could be used to update the design plan using a large map of the 2011 design framework.

Step B: Design the Corridor. Participants were asked to provide more detailed feedback on the programs and design features they would like to see in the different areas of the corridor.

Step C: Prioritize. Participants were asked to tell us how they would prioritize the timing of the various improvements in the corridor.

Step D: Corridor Elements and Programming. Building on the identified programs and design elements from the past framework such as bike racks, community gathering spaces, and seating, a selection of different design styles for each of these elements was shown. Participants were asked to select their preferences and comment on these images to help create a more detailed plan for the corridor.



Bow to Bluff Public Realm Plan

Report Back // What we Heard
July 2017

What we heard

In total, the engagement received:

- ▶ 148 comments about issues and opportunities
- ▶ 130 elements or programs placed on a map with an additional 32 comments
- ▶ 685 tallied selections for which projects should be prioritized, and
- ▶ 524 preference selections pertaining to the types of elements that are appropriate for the corridor

Generally, the comments that were received recommend the following eight actions:

- ▶ Add new vegetation and green space throughout
- ▶ More community spaces for activities and functions
- ▶ Improve pedestrian safety
- ▶ Create a better overall experience with more amenities
- ▶ Provide more cycling infrastructure
- ▶ Better maintenance
- ▶ More public art

Of the 13 sub-projects proposed, the top five priorities for construction are as follows:

- ▶ Parkette 3
- ▶ Active living park and Memorial Drive
- ▶ Parkette 2
- ▶ Parkette 4
- ▶ LRT Fence (south)

Of the 524 preference dots received, the top five elements and programs are as follows:

- ▶ Repurposed container
- ▶ Evening gathering space
- ▶ Community garden
- ▶ Vegetated fence
- ▶ Mural / public art

For a detailed summary of the input that was provided, please see the [Summary of Input](#) section.

For a verbatim listing of all the input that was provided, please see the [Verbatim Responses](#) section.



Bow to Bluff Public Realm Plan

Report Back // What we Heard
July 2017

Summary of Input

Part A: Issues and Opportunities

Theme/preference/value	Detailed explanation or example
Add new vegetation and green space throughout	<ul style="list-style-type: none"> ▶ Add more trees, green space, flower beds, wildflowers ▶ Add edible plants to the urban realm such as hops, public fruit trees, community gardens and urban farms ▶ Native plants and natural landscape that increases habitat value for more beneficial species - plants, bugs, animals ▶ Preserve green space / don't concrete over
More community spaces for activities and functions	<ul style="list-style-type: none"> ▶ Programming/events that people actually use such as live music or performance, movies in the park ▶ Public not private space ▶ More activation means less illegitimate activity ▶ Allow or encourage dogs ▶ Sacred spaces ▶ Make sure these spaces are programmed
Improve pedestrian safety	<ul style="list-style-type: none"> ▶ Use CPTED through the whole corridor ▶ Maintain/upgrade pathway infrastructure ▶ Create better sightlines and visibility ▶ Improve lighting ▶ Safe space needed ▶ Vegetation maintenance ▶ Winter snow maintenance ▶ Improve intersections and crossings ▶ Fix holes and cracks in walkways and sidewalks ▶ Fix ramps ▶ Woonerf
Create a better overall experience with more amenities	<ul style="list-style-type: none"> ▶ Seating in all green areas (however seating was also seen to encourage illicit and anti-social behaviour) ▶ Covered seating ▶ Wider pathways ▶ Lighting and/or art under the bridge ▶ Free wifi with power outlets ▶ Shade and shelter ▶ Exercise stations ▶ Public washrooms ▶ Active recreation amenities ▶ Some want a skateboard park but others do not ▶ Free library



Bow to Bluff Public Realm Plan

Report Back // What we Heard
July 2017

	<ul style="list-style-type: none"> ▶ Signage ▶ Dock/raft station ▶ Water fountain ▶ Payphone
Rethink traffic flows	<ul style="list-style-type: none"> ▶ Bad intersections; particular concern for where 9A St meets 2nd Ave NW due to limited sightlines, dangerous left turns, and increased congestion. Four-way stops needed.
Provide more cycling infrastructure	<ul style="list-style-type: none"> ▶ More bike racks ▶ Dedicated bike path ▶ Reroute traffic into the corridor ▶ Improve connectivity between the communities and two other trail networks
More public art	<ul style="list-style-type: none"> ▶ Paint laneway and garage murals ▶ Funky art ▶ Art under bridge (either permanent or temporary, interactive would also be good) ▶ Some residents willing to paint murals for the community

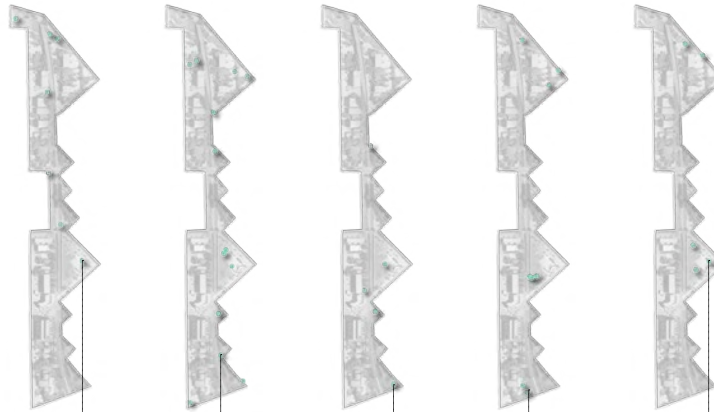


Part B: Design the Corridor



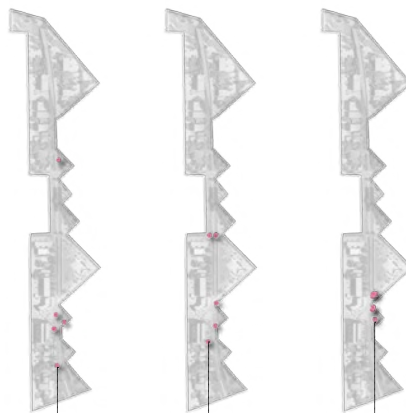
Park Use + Amenities

75 mapped elements



Connectivity + Accessibility

23 mapped elements





Identity + Experience

11 mapped elements



Evening Gathering Space



Vegetation

11 mapped elements



Fruit Trees



Safety + Maintenance

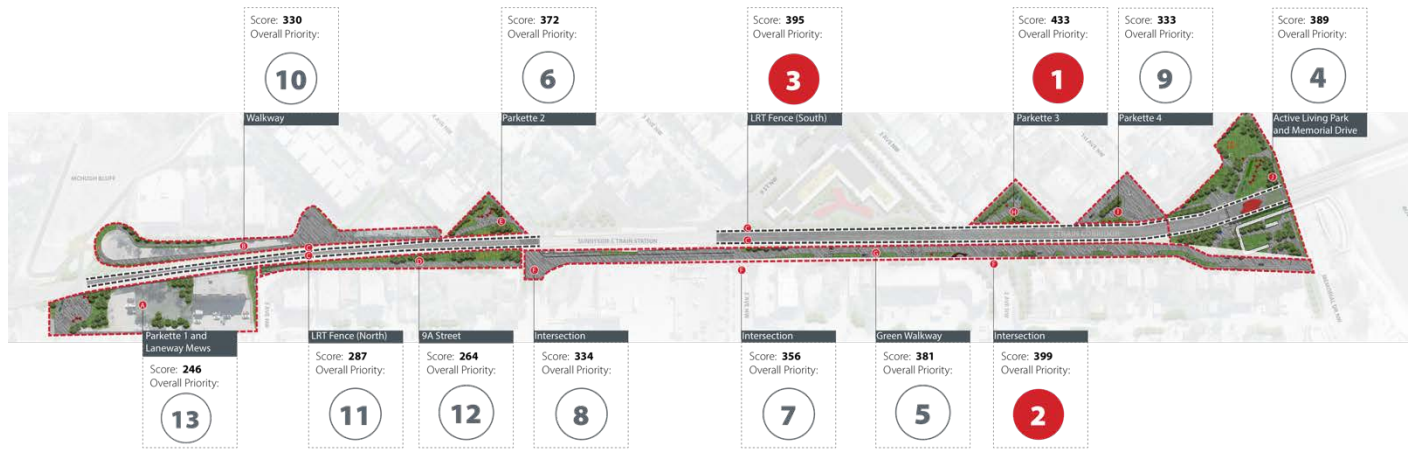
10 mapped elements



Lit Pathways

Part C: Prioritize

Analysis of 450 individual priorities was undertaken to determine the public’s overall preferences in the Bow to Bluff corridor. This was done by assigning an opposite value to each number that was placed; priorities 1 through 10 were reversed so that a 1 became worth a 10, a 2 worth a 9, and so on. An overall score was then determined for each category by tallying these opposite values. The larger the score, the higher the priority. Rather than simply averaging the priorities, this strategy ensured that the number of times an item was chosen to be prioritized was reflected in its overall score.



Part D: Corridor Elements and Programming

The most popular options from each theme are pictured below.



Park Use + Amenities 270 dots



Connectivity + Accessibility 90 dots



Identity + Experience 67 dots

Safety + Maintenance 35 dots



Bow to Bluff Public Realm Plan

Report Back // What we Heard
July 2017

Verbatim Comments

Part A: Issues and Opportunities

- Zipline
- grade of pathway
- Funnel 19th St and 5th Ave cycle traffic into / out of Bow to Bluff corridor
- Art under here
- Need a bridge / tunnel to connect west 10th St cycle lane to Bow to Bluff corridor
- SIGN for directions
- lighting
- more SHADE
- Address melt runoff issues. Sidewalks are low points and get flooded when snow melts.
- NO CONCRETE
- Bikes on sidewalk (dangerous)
- Multiple Exercise Stations
- Needs more SHADE. Monkey bars, bike rack. PULL UP BARS
- Crosswalk 4th Ave & 7th St.
- Don't close connections
- Plants
- Widen sidewalk but plant tree at end
- More flowing spaces across pathways instead of just being straight.
- Narrow
- Needs better lighting, better visibility
- Sacred safe place space
- Sidewalk connection, free library, bench with plants
- Make bike path
- "Fruit trees *
- Keep green
- No sidewalk
- No fake grass"
- "Public art space
- Funky art
- Seat"
- Wifi + power outlets

- "More trees
- Shade"
- Public washroom
- Keep heritage character of houses
- Left hand turn is nuts!
- Legalize left hand turns outside of rush hour
- Yes please [in response to left hand turns comment]
- No, thanks. Sunnyside will become drive thru [in response to left hand turns comment]
- Allow. Left turn during non-rush hour times for local traffic [in response to left hand turns comment]
- Covered bench
- Public washroom
- Make it so you can walk through here without having to cut through C-Tran station (please!)
- Clear snow
- Fix ramp
- Hole in walkway
- More dogs!
- Bike rack always full, needs more. Covered, art installation
- Programming in spaces (bands, BBQs)
- Actually use the space
- Flower bed
- Have something ppl on the train can interact with or look at
- Build no more than 3 storey housing
- Build lower height dev.
- Fix sidewalk
- Future development
- Low height dev. Under 6 st.
- Climbing wall - sports machines
- Make it green & use bridge as shelter + more seating
- "Agreed [arrow pointing to ""make it green"" comment]
- Greenspace + seating + arts"
- 4 way stop
- Narrow 2nd Ave + add Blvd with trees like memorial
- Keep as green space
- Make this place more inviting, it looks little shoddy right now.
- I don't like housing development in this site
- Community engaged. Shared public
- "Do NOT concrete over areas

- Pipes back-up + sewers"
- "Share spaces, not just for developers
- Make spaces for everyone"
- HOPS vine along fence!
- I don't like idea of fencing caz [sp.] it is less interactive with people in the train to the l's walking on path.
- Limited view for left hand turns. Traffic bottleneck
- Disallow left hand turns from 9A to 2nd Ave
- Too dangerous
- Terrifying intersections
- Bench beside restaurant -- space is too small for walker
- Bike path!
- Traffic light or 4 way stop
- Connect 1st Ave N laneway to 9th Street traffic light for cyclists / commuters
- 3 neighbours are willing to paint garage murals in laneway!
- Make this 1st Av N laneway the connector bet. Peace Bridge + 9th St traffic light and B2B corridor and Kensington
- Using paint on laneway and garage murals / signage, encourage cyclists to use B2B corridor bet Kensington and downtown.
- When designing B2B, do not off-load CPTED-related issues to 1st Ave cul-de-sac and laneway
- Activate this pocket park to encourage legit activity, "eyes on park"
- "Take down green fence in this pocket park
- Illicit / anti-social behaviour is a HUGE problem (drugs)"
- NO benches in pocket parks as they are a centre of illicit activity.
- More visibility from outside this park (e.g. get rid of the garden fence)
- Benches in all green spots
- Library boxes
- Public fruit trees + edible plants for everyone
- Improve crosswalk on 2nd Ave + 9A Street on both sides of LRT with paint --> then funnel cycling traffic into laneway bet 1st Ave & 2nd Ave -- reduce illicit / anti-social activity and reduce cycling traffic on 10th Street --> Peace Bridge / DT
- Tremendous pressure of increased population means 2nd Ave + 9A St crossing very congested
- Funnel cycle traffic from Peace Bridge into Kensington via B2B corridor
- Get bikes off 10th St between river and 5th Ave
- This U-turn can be better optimized. Many drivers use paved back lanes instead of U-turn
- Make wider path
- Unless it's being widened for bikes, this width is fine for a ped. pathway
- Light sculptural garden under the bridge --> to light up the area, safer for pedestrian

- More spaces to organize public events
- If fun things are seen from Memorial, people will slow down
- Climbing wall OR exercise machines - people on Memorial will see
- More Garden + Urban Farm
- Pull-up bars and other bar structures for exercise
- Temporary interactive installation art --> under
- Make 2nd left turn option
- Change one way into another option to get from Kensington Rd to Memorial
- Pedestrian scramble intersection?
- This intersection sucks: get rid of
- Cars trying to turn, but interrupted by: pedestrians -->
- [drawing of what looks like an angel, with speech bubble that reads] Why can't I come out for the Calgary?
- Rain Barrels / Green Roofs
- Raft docking station
- Dock!
- "Travelling Rings" See Santa Monica
- Adult Alpine Training Park
- Pettable dogs
- Wild / native gardens
- Native plants / habitat gardens
- Perennial flowers
- Seating here
- Washrooms
- No steel no glass
- ART!
- Water or beer fountain
- Skateboard park
- Skateboard park
- Skateboard park
- No skateboard park
- No skateboard park anywhere
- Payphone
- Safe place
- Drum circle
- Sacred space
- Free wifi so I can chill in the park and work / study
- YES!! [in response to wifi comment]

- Flexible seating like Riverwalk
- Incorporate a labyrinth into a greenspace
- 9A St woonerf PLEASE!
- Keep garden going strong
- Plant wildflowers / lantural landscape that promotes more beneficial species - plants, bugs, animals
- WI-FI!!! (free)
- More dogs!
- Overall better communication needed for clean up and maintenance of plants, grass, trees. More \$, training and discussing conditions of areas needed.
- Need more community spaces for shared experiences like live music or performances
- Improve the shipping containR site, taller walls to enclose sound and prevent sound pollution / make a nice impressive site. It captures the imagination! Keep it, help it grow, make it better / cleaner while maintaining the character
- Container has been around long enough to garner a following - build on that with some permanent public event + garden infrastructure. Public, prominent space in a flagship community is important to nurturing a vibrant city.
- WIFI HOTSPOTS! + Power for laptops & outdoor "workstation" seating
- Instead of 🚫 don't signs, place signs of what you can do. Positive influence
- Organized community garden!
- Spray for dandelions
- Check out "Pop Brixton" in London
- Patios on top of this C-Can! Liquor License
- Food trucks with liquor
- "More parks
- Less highrise
- Walking areas
- Safe"
- ❤️👤 More dogs!!!!!! ❤️👤
- More cool places to take pics
- More dogs!!!!!!
- Movies in the park
- More interactive spaces... with easy flow [hand drawn diagram]
- "Public wifi is good because I like bringing my laptop & work in the park"
- More dogs!



Bow to Bluff Public Realm Plan

Report Back // What we Heard
July 2017

Part B: Design the Corridor

- Rain Barrels / Green Roofs
- Raft docking station
- Dock!
- "Travelling Rings" See Santa Monica
- Adult Alpine Training Park
- Pettable dogs
- Wild / native gardens
- Native plants / habitat gardens
- Perennial flowers
- Seating here
- Washrooms
- No steel no glass
- ART!
- Water or beer fountain
- Skateboard park
- Skateboard park
- Skateboard park
- No skateboard park
- No skateboard park anywhere
- Payphone
- Safe place
- Drum circle
- Sacred space
- Free wifi so I can chill in the park and work / study
- YES!! [in response to wifi comment]
- Flexible seating like Riverwalk
- Incorporate a labyrinth into a greenspace
- 9A St woonerf PLEASE!
- Keep garden going strong
- Plant wildflowers / lantural landscape that promotes more beneficial species - plants, bugs, animals
- WI-FI!!! (free)
- More dogs!
- Overall better communication needed for clean up and maintenance of plants, grass, trees. More \$, training and discussing conditions of areas needed.
- Need more community spaces for shared experiences like live music or performances



Bow to Bluff Public Realm Plan

Report Back // What we Heard
July 2017

- Improve the shipping containR site, taller walls to enclose sound and prevent sound pollution / make a nice impressive site. It captures the imagination! Keep it, help it grow, make it better / cleaner while maintaining the character
- Container has been around long enough to garner a following - build on that with some permanent public event + garden infrastructure. Public, prominent space in a flagship community is important to nurturing a vibrant city.

Part D: Corridor Elements and Programming

- WIFI HOTSPOTS! + Power for laptops & outdoor "workstation" seating
- Instead of 🚫 don't signs, place signs of what you can do. Positive influence
- Organized community garden!
- Spray for dandelions
- Check out "Pop Brixton" in London



Park Use + Amenities

These are public realm elements such as furniture or programs

Shelter



Semi-covered

10



Fully-covered

6

Power



Power for Events

6



Solar Charging Stations

10

Open Spaces



Flexible Lawn

10



Flexible Paved Area

3



Skating Area

12



Natural Area

11

Performance Area



Open

8



Sheltered

5

Seating



Flexible

5



Fixed

11



Individual Benches

3



Group Seating

6



Iconic Seating

5



Artistic

10



Community Gathering + Food



Harvest Table

2



Picnic Table

4



Community Oven

13



BBQ Grills

13

Food / Drink Kiosk



Repurposed Container

19



Seasonal Food Access

11

Dogs in the Park



Off-leash

8

Public Art



Temporary Installation

8



Permanent Installation

1



Fence Treatments

5

Free Library



Free Library

5

Bike Racks



Bike Racks

5

Drinking Fountain



Drinking Fountain

11

Exercise + Play



Single Area

0



Multiple Stations

8



Prefab / Metal

8



Custom / Natural

4



Petanque / Bocce

4



Winter Play

3



Ping-pong Tables

5



Adventure

7



Climbing Wall

3



Prefab / Metal

2

Vegetation

● These are plantings that enhance biodiversity, define or soften urban edges, and create beautiful places

Plantings



Planter Seating

7



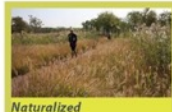
Annual

1



Perennial / Winter

3



Naturalized

11



Trees



5



11

Low Impact Design



1



6

Garden Allotments



17

Connectivity + Accessibility

These are improvements that create a cohesive and accessible network for moving around the area by foot, bike, vehicle or transit.

Crossings



2



2



1



5

Pathway Types



5



2



8



0



3

Sidewalk



8

Wayfinding + Signage



3



1



2



3



6



3

Fence Treatments



0



16



6



14



Safety + Maintenance

These are features or design techniques that create a safe, 24/7 environment for all visitors

Safety + Maintenance



Emergency Call Box

3



Snow Clearing on Paths

5



Improved Sightlines

9



Vegetation Upkeep

5

Lighting



Lit Open Space

7



Lit Pathways

6

Identity + Experience

These are overall types of spaces you would like to create. The elements and activities in the space will influence its identity and experience

Identity + Experience



Flexible Areas

8



Pathway Activities

6



Natural Area

7



Quiet Spaces

13



Community Places

7



Recreational Spaces

2



Winter Gathering Space

7



Evening Gathering Space

17



What did we miss? Use a sticky note to write your comment here.