

“PLAY IS THE BRAIN’S FAVORITE WAY TO LEARN”



ALL ABOUT EARLY CHILDHOOD DEVELOPMENT COALITIONS



ECCA Community Coalitions

Coalitions are a:

Group of individuals that have come together to support the development of community-specific action plans for enhancing early childhood development (ECD) outcomes.

Coalitions are comprised of members that live, work or play in that community, and may include parents, citizens, service organizations, funders and community partners.



Early Childhood Coalitions

- There are 98 coalitions in Alberta.
- Coalitions support the cross-ministry government program implemented by...

Alberta  Education

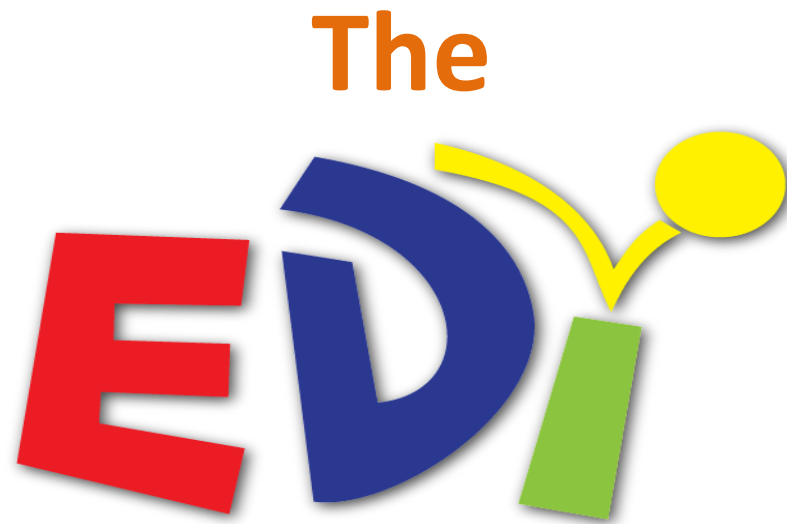
Alberta  Community and
Social Services

Alberta  Health

What do coalitions do?



- Raise public awareness of the importance of the early years
- Share the data we have and encourage community partners to use this data in decision making
- Identify community strengths and unmet needs
- Identify and increase awareness of existing community resources



The Early Development Instrument

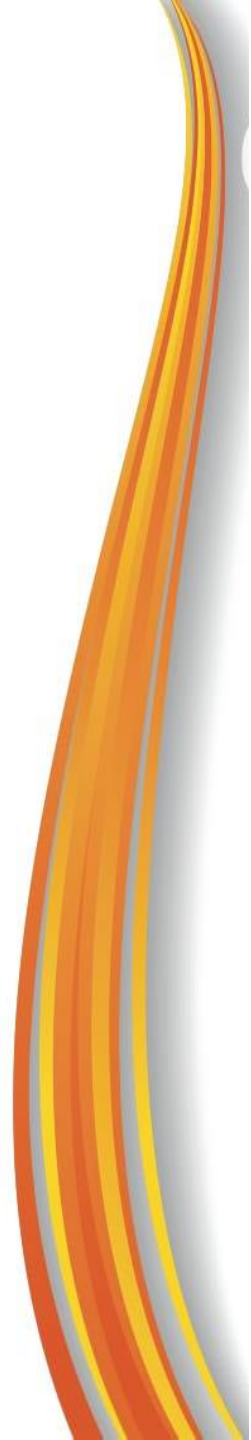
*- A tool developed by the
Offord Centre for Child Studies*



What is the Early Development Instrument?



<https://offordcentre.com/edi-early-years/>



EDI in Canada



1,124,169

Completed EDIs

The EDI information collected for
five-year-old children in Canada
since 2004



12 of 13

Provinces & territories

Canadian provinces and territories
EDI has been implemented in

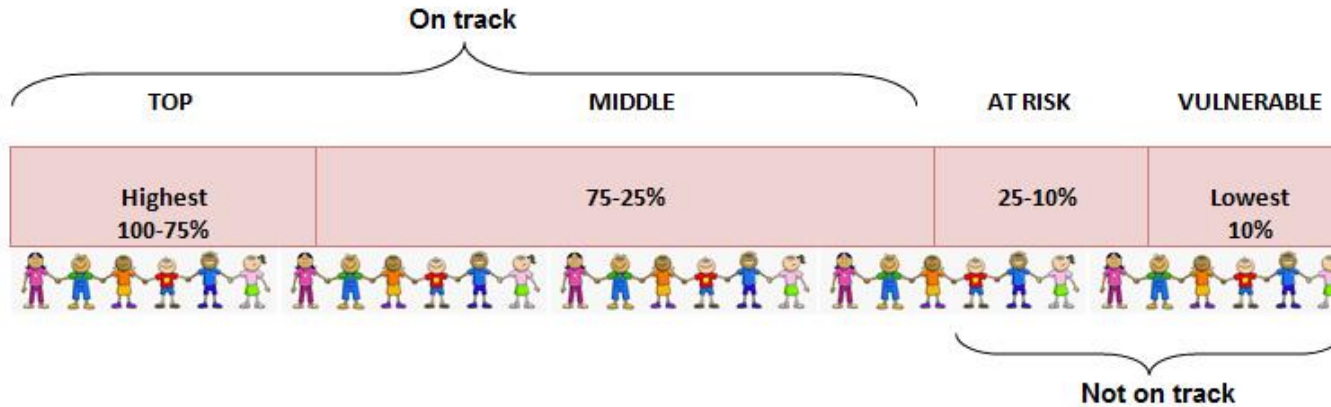
How Alberta defined Special Needs for EDI collection

- Two categories that were **included** in the provincial and community reports:
 - mild/moderate disabilities or delays (M/MD)
 - severe delay involving language (SDL)
- One Category which was **reported on separately** from provincial and community results.
 - severe disabilities (SD)

Category includes: severe cognitive disability; severe emotional, behavioural disability; severe multiple disability; severe physical or medical disability; deafness; and blindness.



Early Development Instrument Categories



- Children with scores falling within the top 75 percent are categorized as **On Track**
- Children with scores between the 10 – 25 percent are categorized as **At Risk**
- Children scoring in the bottom 10 percent are categorized as **Vulnerable**

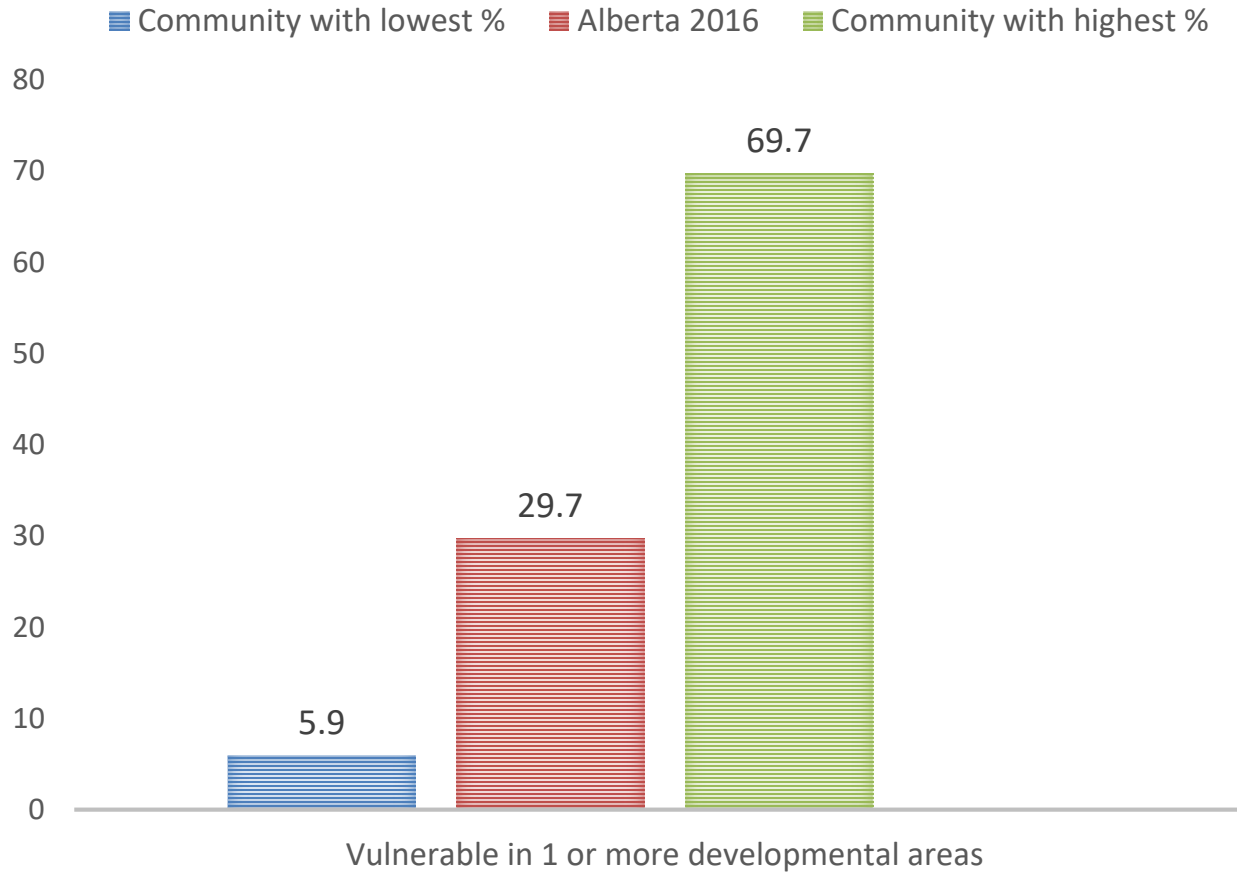
2016

Early Development Instrument Alberta Results

Figure 2: Vulnerability in one or more, and two or more domains.



Vulnerability Varies Across Alberta

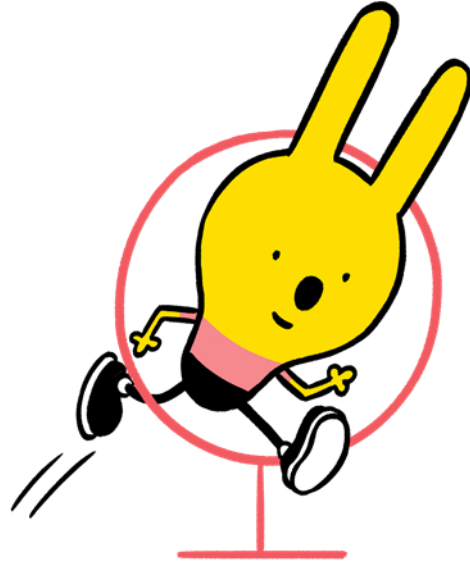


The EDI Measures Five Areas, or Domains, of Early Childhood Development





Physical Health and Wellbeing



Able to use the washroom Independently?

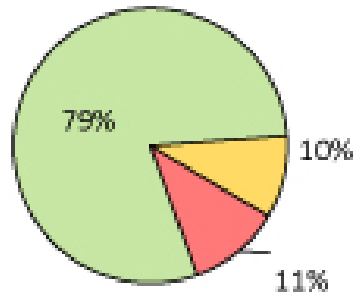
Able to hold a crayon?

Dressed and feed appropriately?



Physical Health and Wellbeing

Calgary Citywide



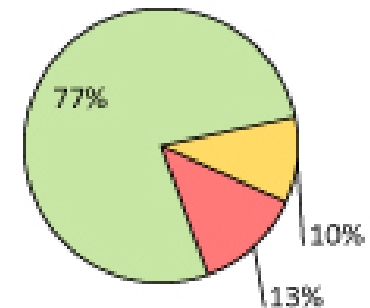
On Track At Risk Vulnerable

Physical Health and Wellbeing



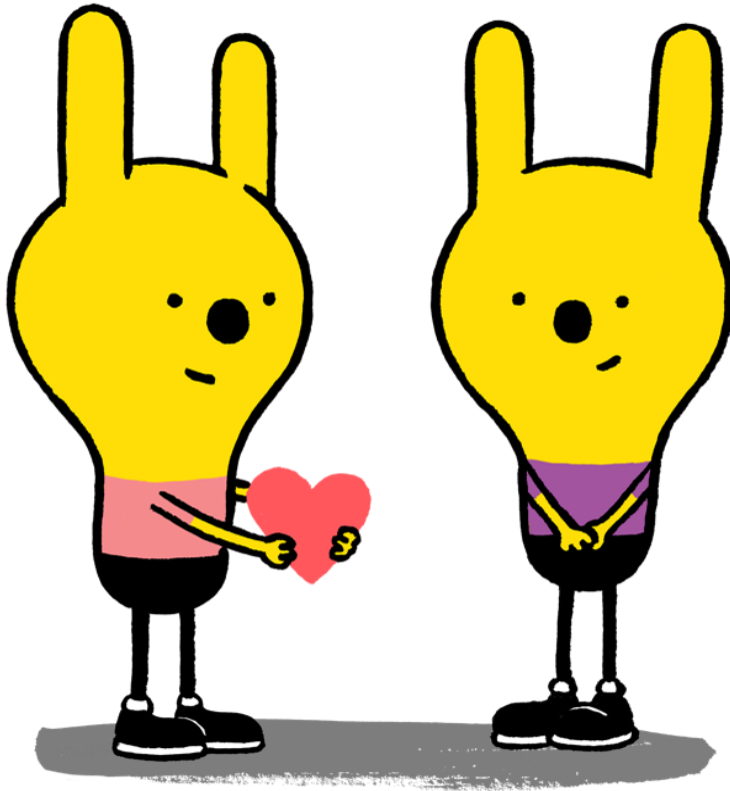
Gross and fine motor skills (e.g. holding a pencil, running, motor coordination), energy levels for activities, independence in looking after own needs, and daily living skills.

Alberta





Social Competence

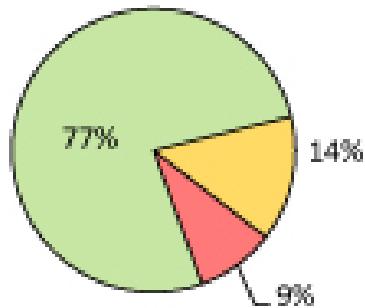


- Demonstrates respect
- Able to follow routines
- Accepts responsibility for actions
- Able to follow rules
- Plays and gets along with other children



Social Competence

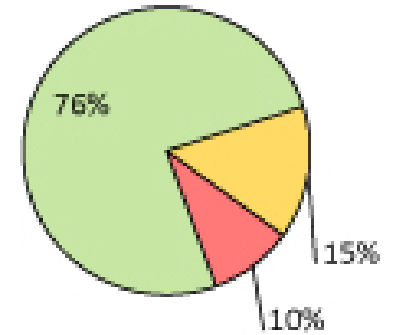
Calgary Citywide



On Track At Risk Vulnerable

<p>Social Competence</p>	<p>Curiosity, eagerness to try new experiences, ability to control own behaviour, respect, cooperation, following rules, and ability to play and work with other children.</p>
--------------------------	--

Alberta





Emotional Maturity

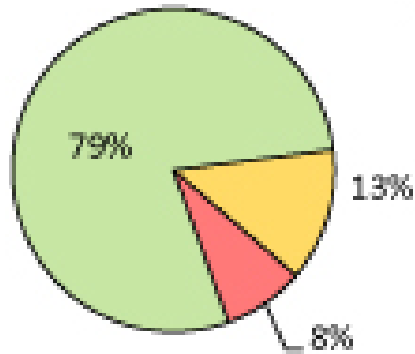
- Not too fearful/Not too impulsive
- Able to deal with feelings at an age appropriate level
- Able to focus
- Able to separate from Parents





Emotional Maturity

Calgary Citywide

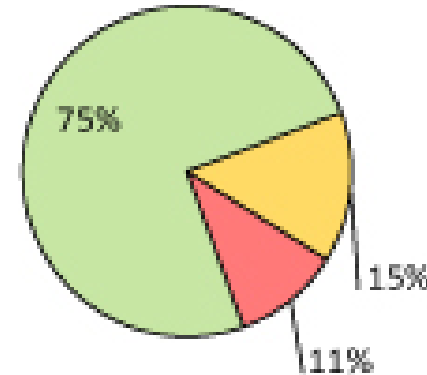


On Track

At Risk

Vulnerable

Alberta

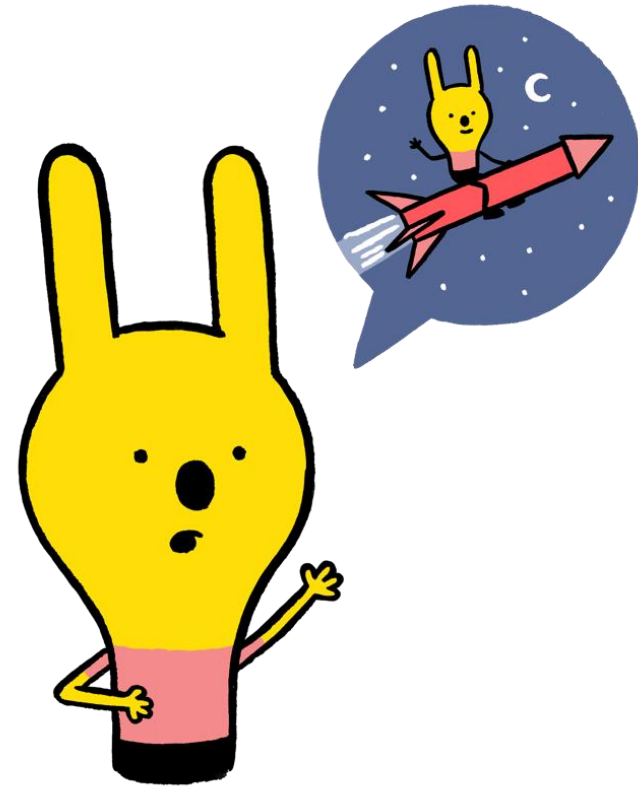


<p>Emotional Maturity</p>	<p>The ability to think before acting, impulse control, ability to deal with feelings at an age-appropriate level, and empathy for other people's feelings.</p>
---------------------------	---



Language and Cognitive Development

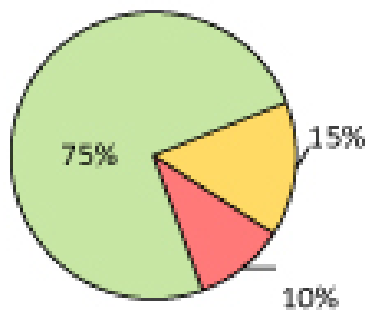
- Able to Identify at least 10 Letters of the Alphabet
- Interested in Reading
- Able to Count to 20
- Able to write his/her own name.






Language and Cognitive Development

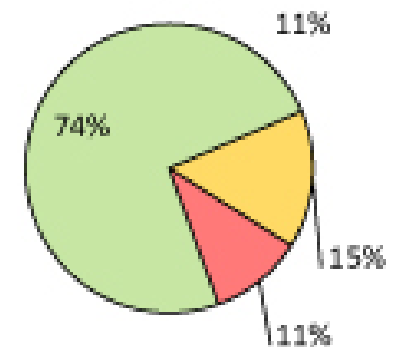
Calgary Citywide



On Track At Risk Vulnerable

<p>Language and Cognitive Development</p> 	<p>Early writing skills, reading awareness, age-appropriate literacy and numeracy skills, ability to understand similarities and differences, and memory.</p>
---	---

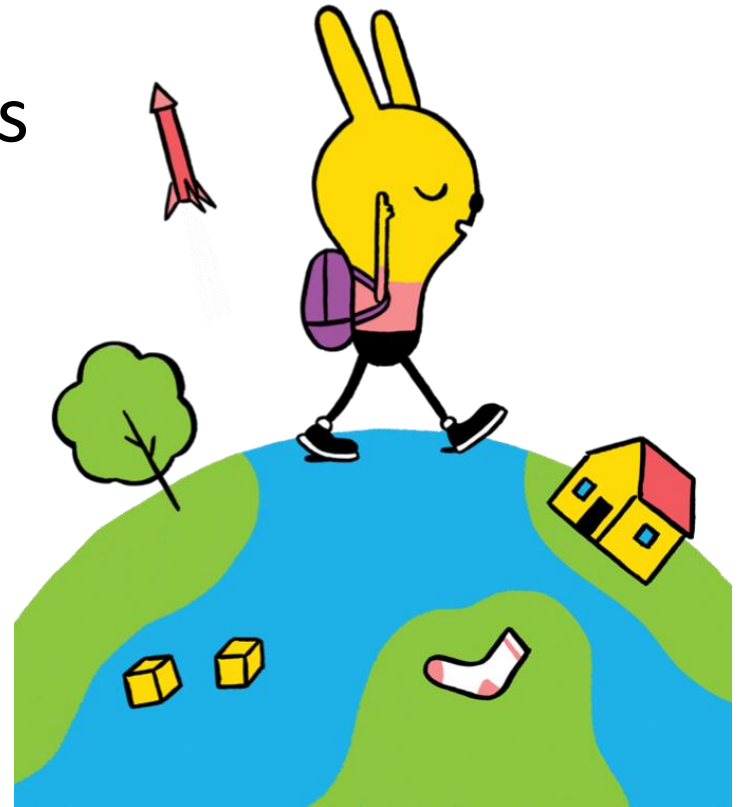
Alberta





Communication Skills and General Knowledge

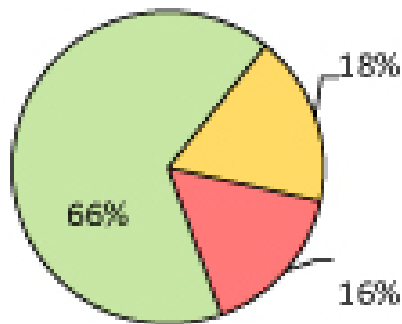
- Able to communicate needs and wants in a socially appropriate way
- Able to tell stories
- Able to say words clearly
- Able to take part in imaginative play





Communication Skills and General Knowledge

Calgary Citywide

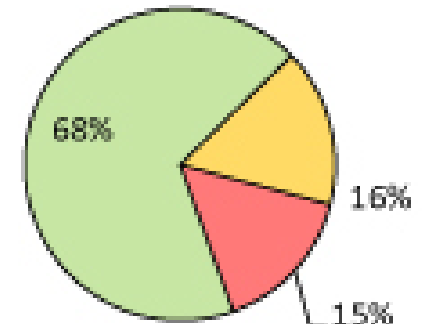


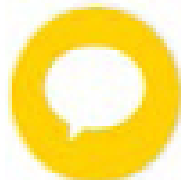
On Track

At Risk

Vulnerable

Alberta



<p>Communication Skills and General Knowledge</p> 	<p>Skills to communicate needs and wants in socially appropriate ways, symbolic use of language, storytelling, and age-appropriate knowledge about the life and world around.</p>
---	---

Nearly a third (33 per cent) of Calgary's Children are at RISK or VALUERABLE in communications skills and general knowledge, the area that appears to be the biggest challenge across Alberta.



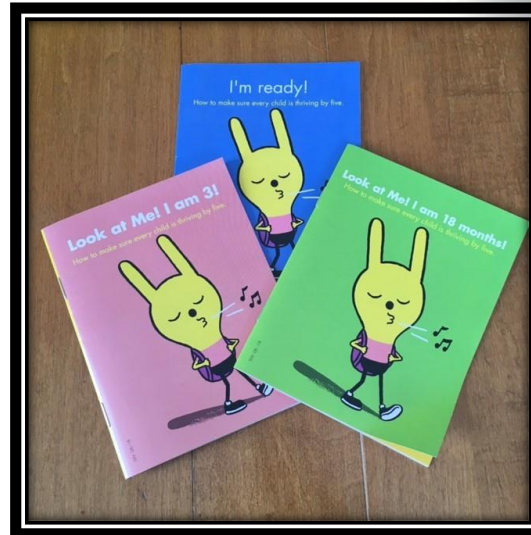
The Prescription

While each community coalitions has a grass roots response to the EDI most coalitions have identified the following key items to support Optimal Early Childhood Development:

- **Strong Communities**
- **Play**
- **Serve and Return Interactions with Loving Adults**



Calgary Coalitions Initiatives



Calgary Play Charter

**Calgary's Early Childhood Coalitions signed
with the First 2000 Days Network and
committed to 4 Big Things.**

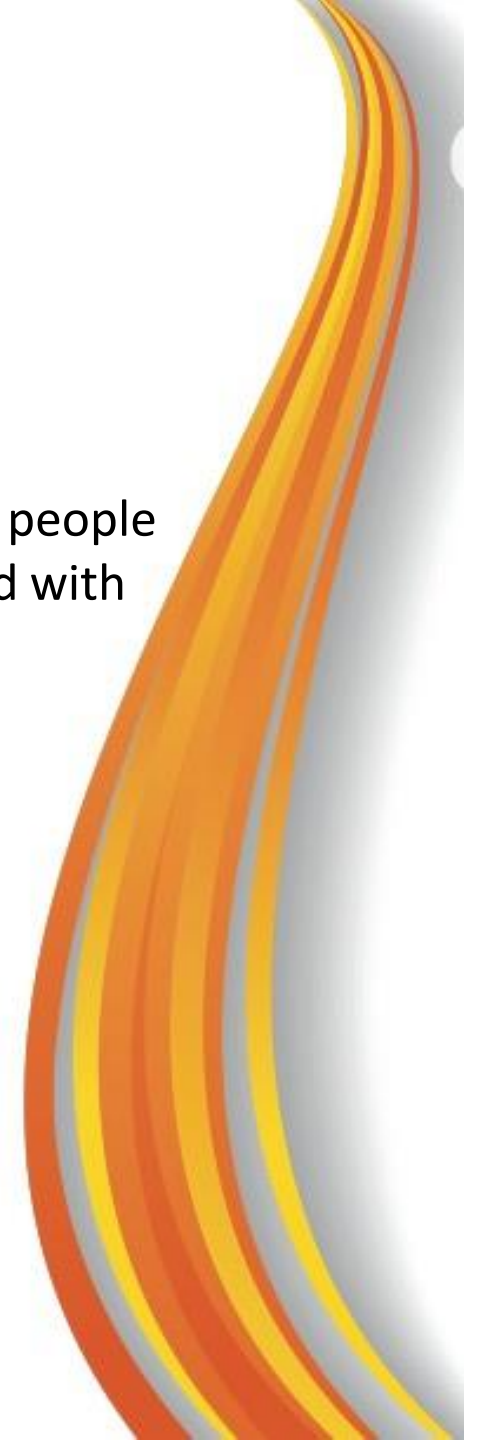


Calgary Play Charter

Our 4 Big Things:

1. Advocacy and Promotion

- 6 workshops/presentations around play, to over 150 people
- 24 play opportunities for families, where we engaged with approximately 650 families



Calgary Play Charter

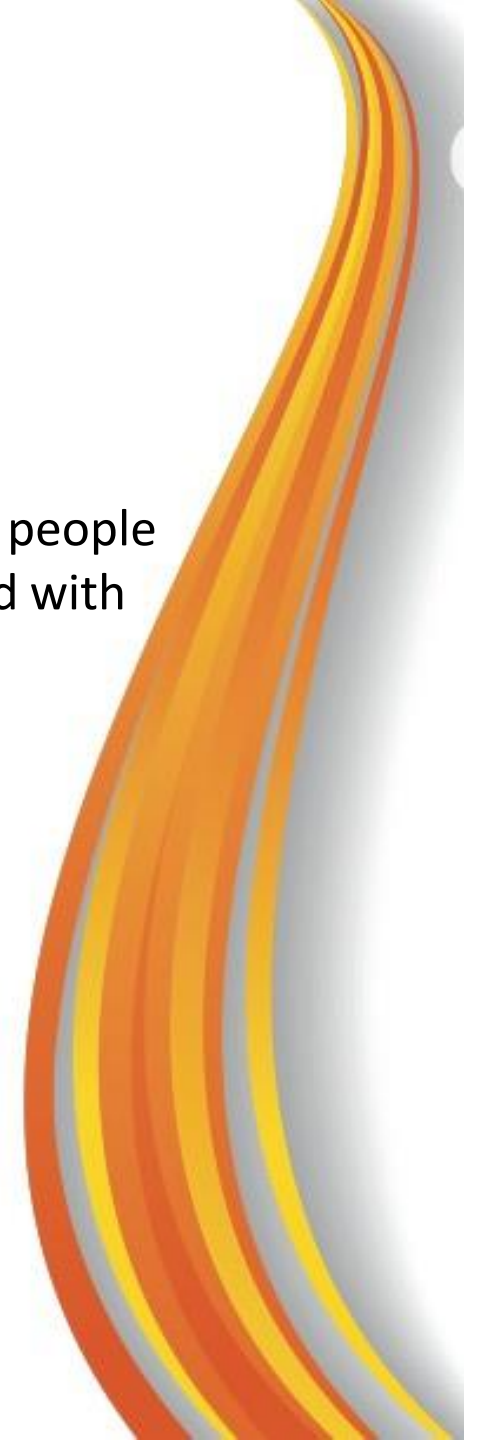
Our 4 Big Things:

1. Advocacy and Promotion

- 6 workshops/presentations around play, to over 150 people
- 24 play opportunities for families, where we engaged with approximately 650 families

2. Communication and Marketing

- Articles around play were published in print in community newsletters and emailed through the First 2000 Days 7 different times
- Social media was used extensively posting articles and play opportunities, multiple times a month
- Play articles were given out at 2 early learning conferences



Calgary Play Charter

Our 4 Big Things:

3. Partnerships

- 28 partnerships were utilized in order to offer play education and opportunities



Calgary Play Charter

Our 4 Big Things:

3. Partnerships

- 28 partnerships were utilized in order to offer play education and opportunities

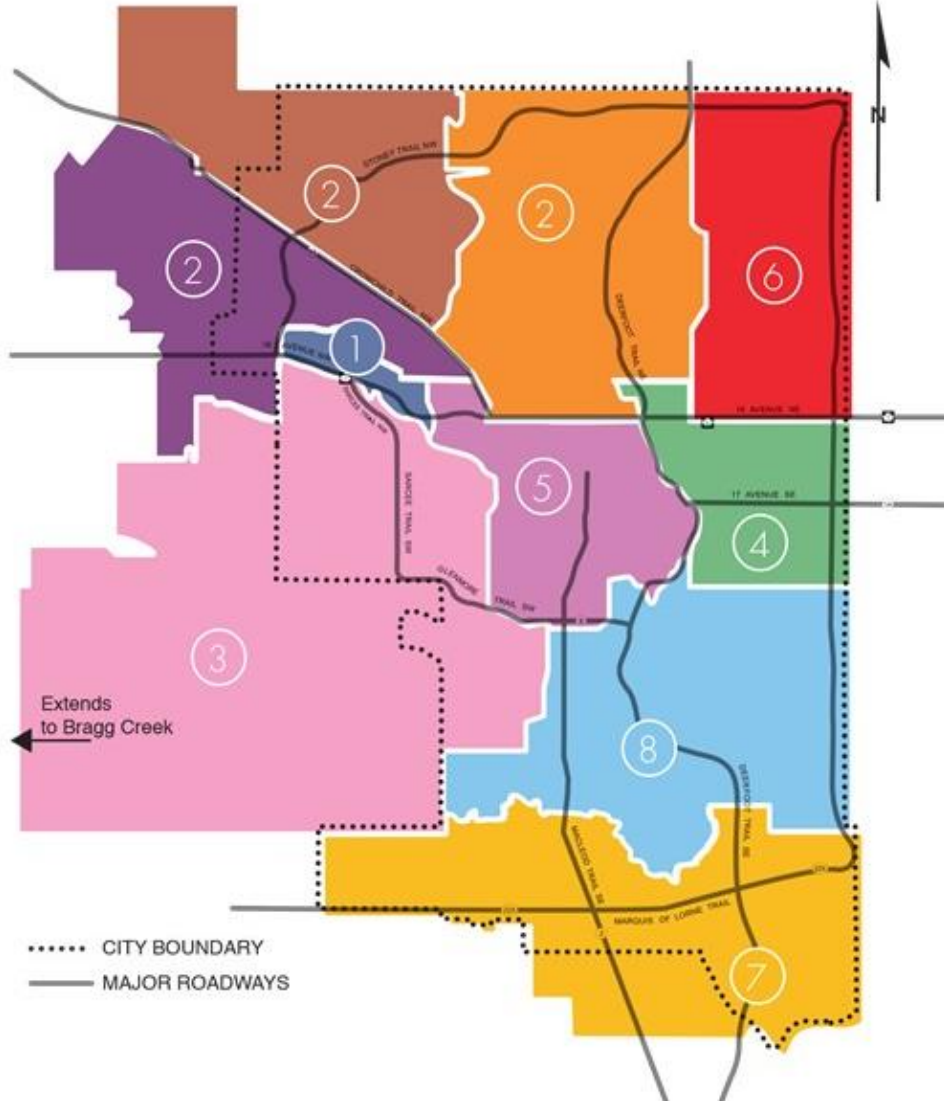
4. Training

- 5 workshops focused specifically on different types of play
- Our play events gave us a chance to educate over 250 adults

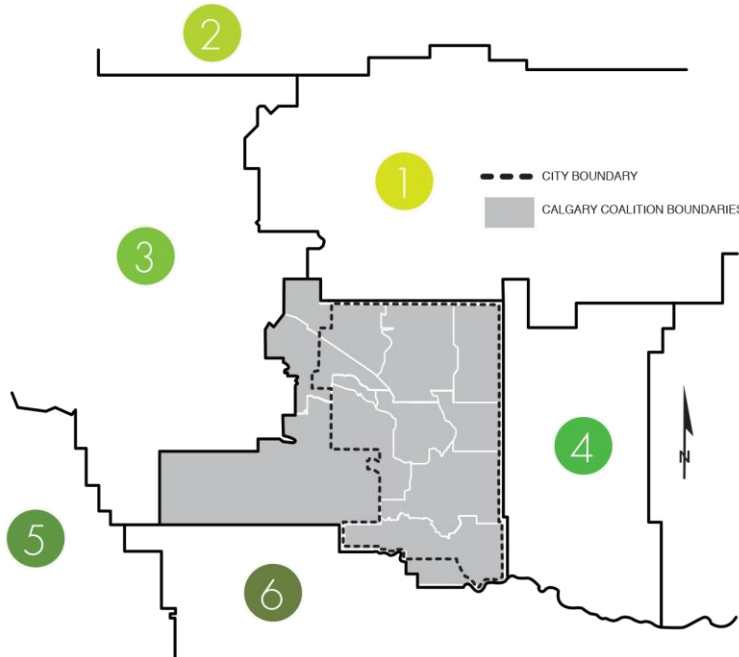


Calgary Coalitions

The "on the ground" force for good in Early Childhood Development.
Contact your area coordinator to learn more and see how you can help.



Local Area Coalitions



1

North Rocky View
Pathways to Success ECD
Coalition
northrocky1@fcssaa.org

2

Mt. View County
mountainview1@fcssaa.org

3

Cochrane ECD Coalition
cochrane1@fcssaa.org

4

Formative 5 – Chestermere
Southeast Rocky View
chesterrocky1@fcssaa.org

5

Bow Valley ECD Coalition
bowvalley1@fcssaa.org

6

Foothills ECD Coalition
(Children's Wellness
Network)
foothills1@fcssaa.org

Thank you

