



THE CITY OF  
**CALGARY**



Rocky Ridge Recreation Facility

CALGARY PLANNING COMMISSION COUNCILLOR PRESENTATION

May 2014





# ROCKY RIDGE RECREATION FACILITY CPC DESIGN NARRATIVE

## Site Layout and Building Design

The Rocky Ridge Recreation Facility is a 'building within a park' located on the edge of the Calgary city limits, between the developing northwest and Rocky View County. The facility reflects and responds to its natural surroundings. The physically diverse 26.1 hectare site has a large hill in its northeast corner, the highest natural elevation in the city limits, a wetland in the southwest, and views to the Rocky Mountains beyond. The southeast corner of the site has been set aside for future development. Integrating the facility into this park-like setting provides northwest Calgary with natural recreation opportunities.

The 26,000m<sup>2</sup> facility provides 100 000 residents in northwest Calgary with essential health and wellness services. It provides a place for gathering, for diverse community and arts programs, for health and wellness opportunities, and for child care services. Inspired by the hills and ribbon-like horizon of the foothills region, the soft curving undulations of the building create an open and integrated facility connecting the natural features of the site with the activity inside. The material palette for the facility draws from the colours of the site and the regional landscape. The shingled metal cladding is softly reflective and will take on the golden hue of the surrounding foothills while changing subtly throughout the seasons.

The Council-approved program includes a 25m 8-lane pool and leisure pool, triple gymnasium, fitness centre and fitness studios, leisure and recreation ice rinks, flexible performance theatre, art space, art gallery, and library kiosk.

Program elements are set beneath a curved, undulating glued laminated timber roof structure that links spaces together and responds to their individual height requirements. The plan form allows all major athletic and theatre components visual access to the outdoors while maintaining a compact building perimeter. The upper ribbon of the façade spans large curving expanses of high performance glazing, providing key views within the facility while selectively revealing activity within to passersby's.

A grand public concourse overlooks activity areas and provides visual access for spectators to the aquatics, fitness, gymnasium, and ice areas. The public concourse is generously sized to facilitate flexible and un-programmed gathering. A second level entry separates controlled and uncontrolled spaces. A single control point on the public concourse accommodates membership and drop-in participants. The facility will be a cultural nucleus: a library, gallery, art studios, and a community theatre will provide an accessible space for the community to actively engage in the arts. These activities are arranged around the public concourse to promote interaction between users.

With its strong natural amenities, the site encourages substantial outdoor programming. Trails wind their way across the site, connecting the facility with the hill, archaeological sites, wetland, and regional pathway system. Walking, hiking, running, biking, cross-country skiing and snowshoeing are all accessible to the public, activating the landscape, and further connecting the facility to its surroundings. Areas of respite in the form of seating spaces and picnic tables situated along the wetland pathway allow visitors to take solace in their surroundings. A basketball court, skate park and tennis courts enhance the outdoor programming.

918 parking stalls are provided, less than the bylaw requirement of 1,082 parking stalls for an Indoor Recreation Facility. The parking areas are integrated into the overall landscape with bioswales, trees and pedestrian walkways.

The schematic design of the Rocky Ridge Recreation Facility meets the program requirements approved by Council in June 2012.

## Landscaping

The Rocky Ridge Recreational Facility landscape plan includes a reconstructed wetland and integration of the natural grasslands on the hill adjacent to the new facility.

The reconstructed wetland meets the compensation requirement for the removed existing wetlands on the site and will also function as a stormwater management facility and passive recreational amenity. Users of the Rocky Ridge Recreational Facility can cross the wetland via a boardwalk that connects it with the facility's larger pathway system providing the opportunity to experience and enjoy the vegetative diversity of the wetland and the natural character of the site.

Stormwater runoff from the parking lots and roads will receive basic pretreatment in bioswales and oil grit separators (OGS) prior to entering the wetland system. The bioswales in the parking lots are planted with a trembling aspen and a fescue grass mix. Pretreated stormwater enters the wetland system through a densely vegetated zone to optimize the filtration process. The stormwater is further treated in the wetland through various natural processes before it eventually flows into the Royal Oak drainage system.

The wetland has been designed with vegetative zones which occur in irregularly shaped concentric rings giving the wetland a naturalized aesthetic. The aquatic or (wet) zone at the waters edge has been designed meandering belts of wet meadow, shallow and deep marsh vegetation including sedges, bulrushes and cattails. The riparian (wet-dry interface) zone is comprised of multiple native species of willows including beaked willow, sandbar and yellow twig willow and include an approved riparian grass / sedge mix. The upland prairie (semi-dry) zone will consist of a mix of native prairie grasses, native shrubs including saskatoon, red osier Dogwood, native prickly rose, gooseberry, silverberry and golden flowering currant. Deciduous and coniferous trees will include trembling aspen, balsam poplar, bur oak, white spruce and siberian larch. The planting palette for the remainder of the site is composed of native and adaptive species that thrive in the southern Alberta climate with minimal watering beyond normal rainfall once established. This planting scheme provides a visual aesthetic and embodies a natural character that is distinctly Albertan.

## Environmental Sustainability

The Rocky Ridge Recreation Facility is being designed in accordance with the City of Calgary's sustainability design guidelines and is intended to achieve LEED Gold certification. Additional sustainable site design and access initiatives include the following:

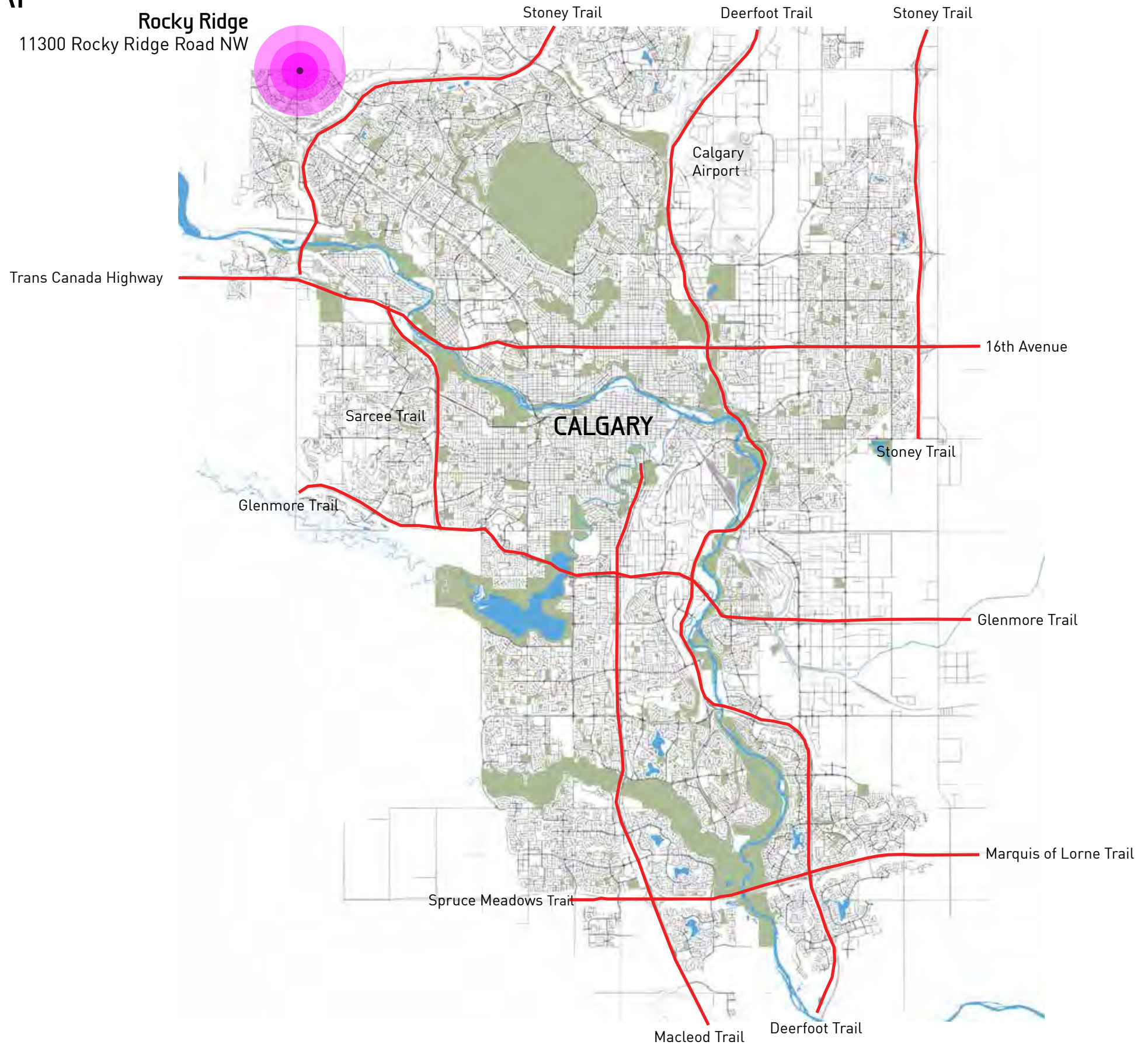
- Bus route and bus stops on site.
- Bicycle parking.
- Limit site disturbance and restoration of habitat.
- Stormwater management and quality control.
- Light pollution reduction.
- Low-water automatic drip irrigation system (irrigation to be provided to the trees and shrubs only).

Sustainable design initiatives incorporated into the building design include:

- Energy modeling.
- The use of Co-Generation for energy production and the capture of heat for re-use.
- Durable building envelope.
- Water use reduction and low-flow fixtures throughout.
- Enhanced building commissioning.
- Installation of measurement and verification systems within the building to monitor energy and utility use, including outdoor air delivery monitoring.
- Construction waste management.
- Recycled and regional materials.
- FSC wood, minimum 50%.
- Interior finishes will be low-emitting. As the design develops options for regional materials and recycled content are being explored.

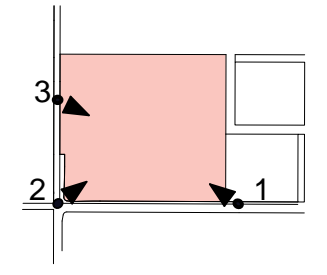
# CITY OF CALGARY CONTEXT MAP

**Rocky Ridge**  
11300 Rocky Ridge Road NW





# SITE PHOTOS



January 2012

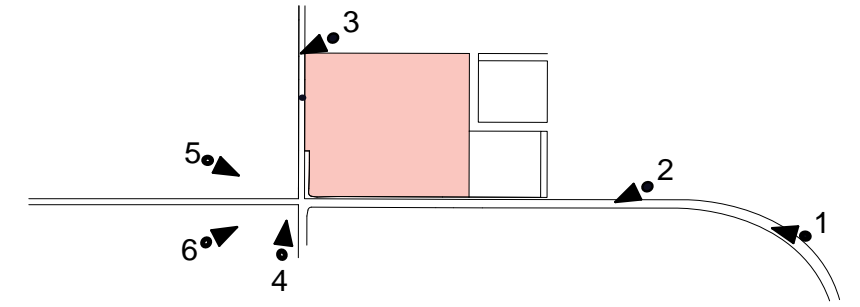


August 2012



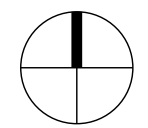
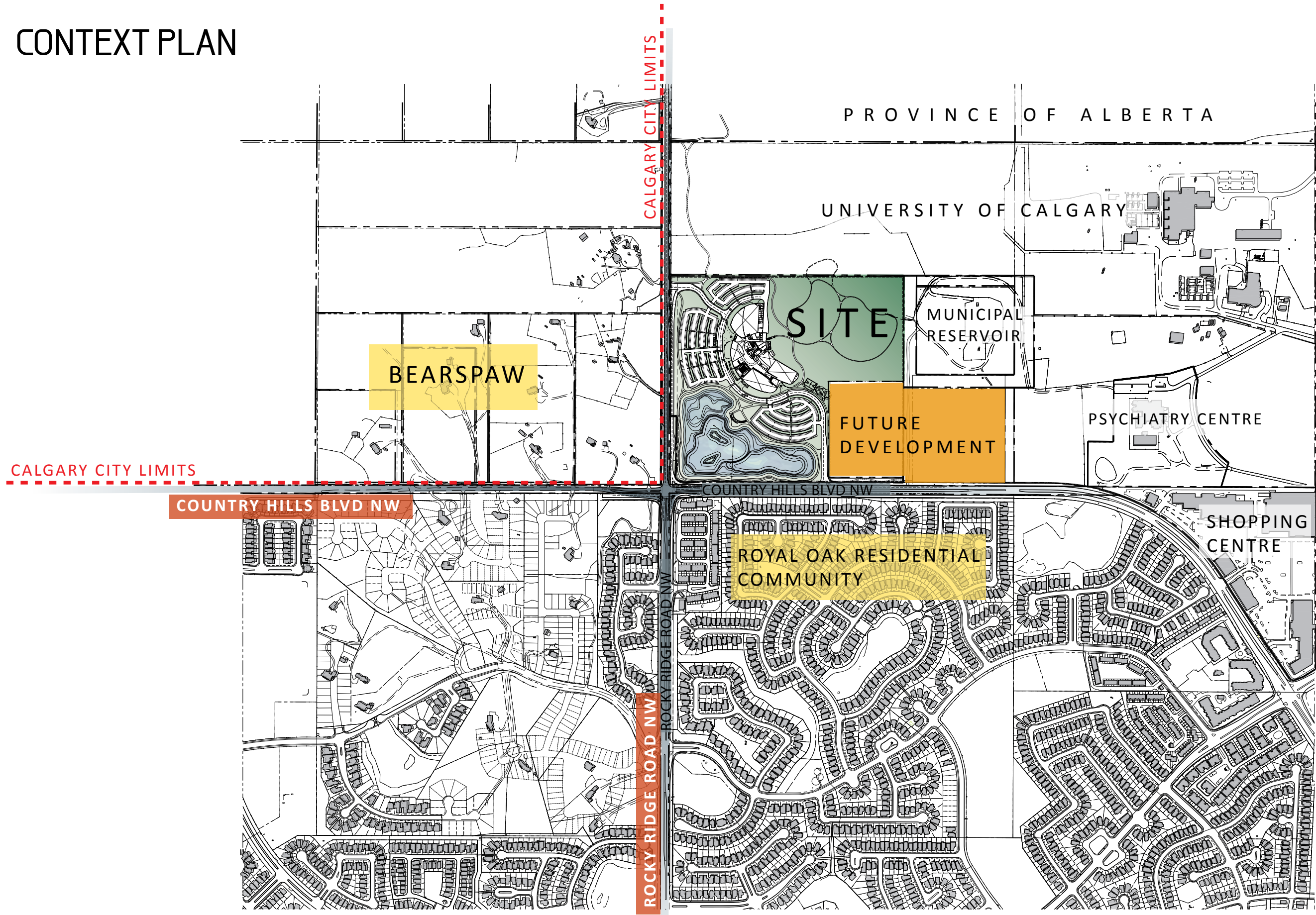


# CONTEXT PHOTOS



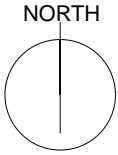


# CONTEXT PLAN





# AERIAL PHOTO



COUNTRY HILLS BLVD. NW





ROCKY RIDGE RD. NW



# SITE PLAN | LANDSCAPE PLAN

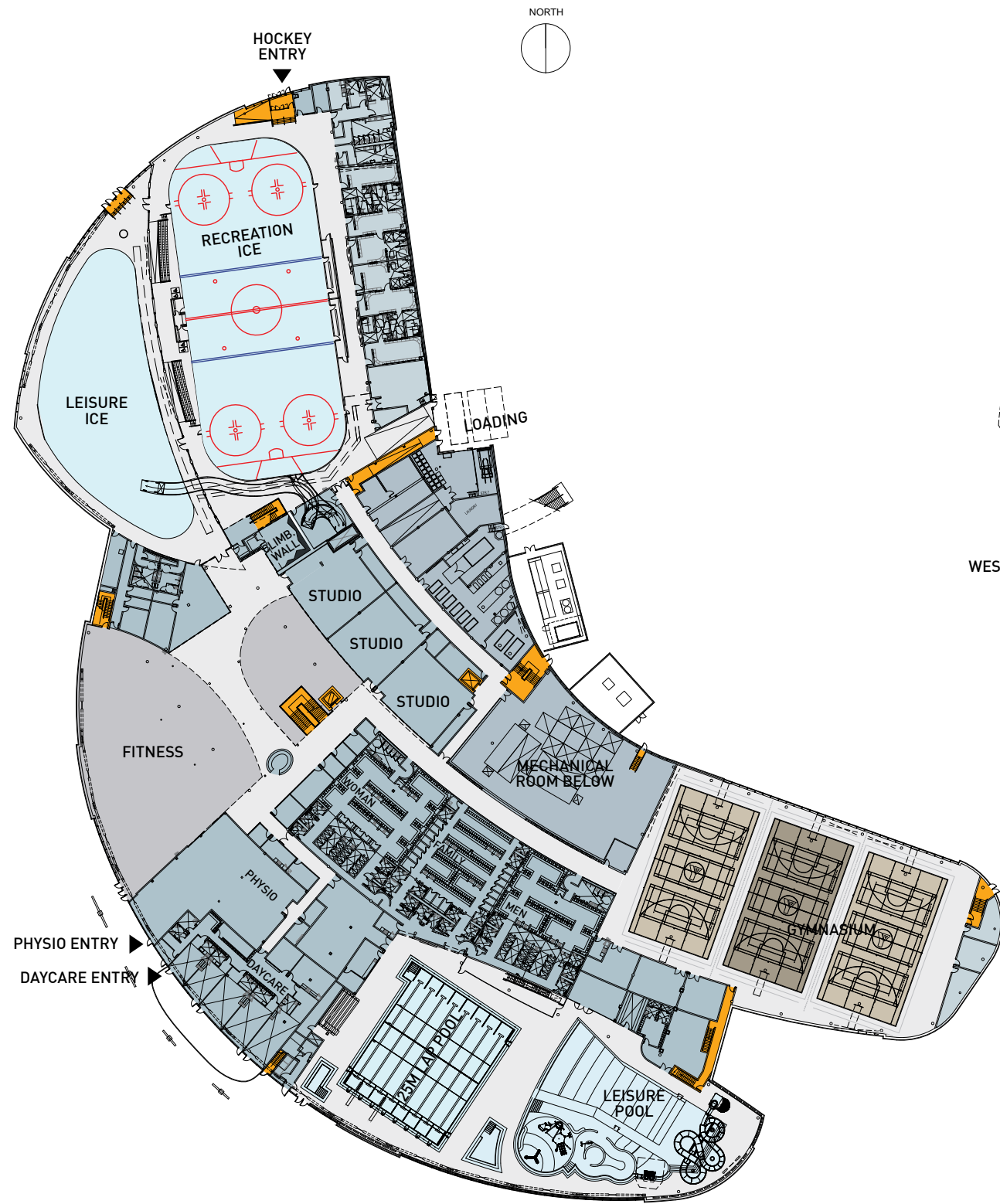


## LEGEND

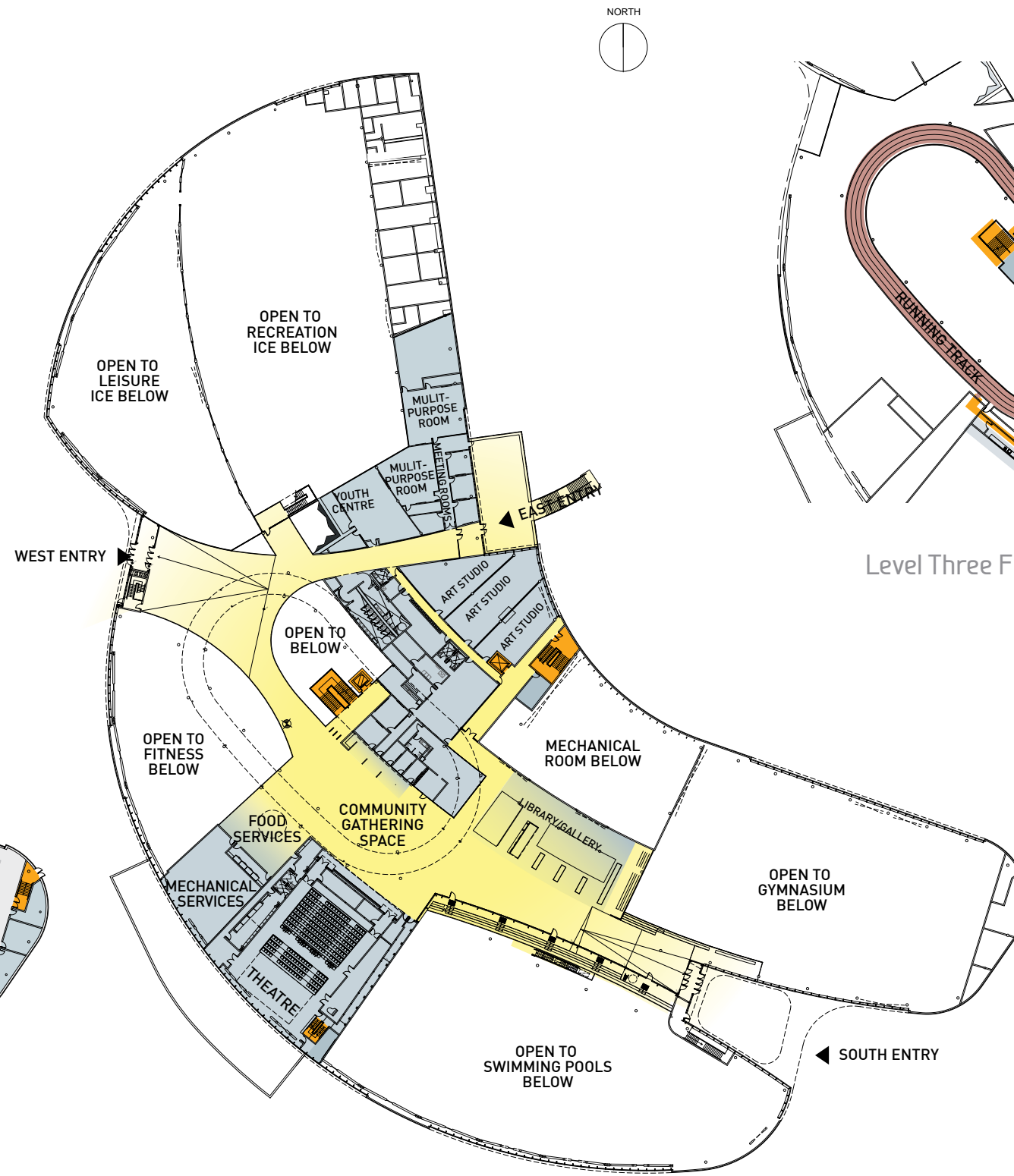
-  Natural Trails
-  Internal Site Pathway
-  Regional Pathway
-  Maintenance Access Pathway



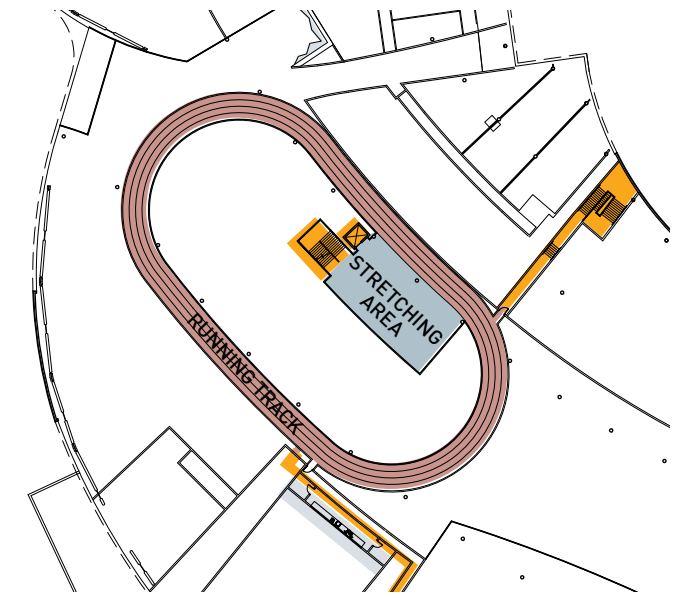
# FLOOR PLANS



Level One Floor Plan (Activity Level)



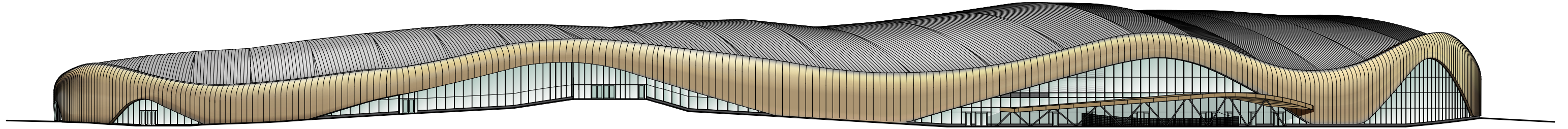
Level Two Floor Plan (Entry, Theatre, Library Level)



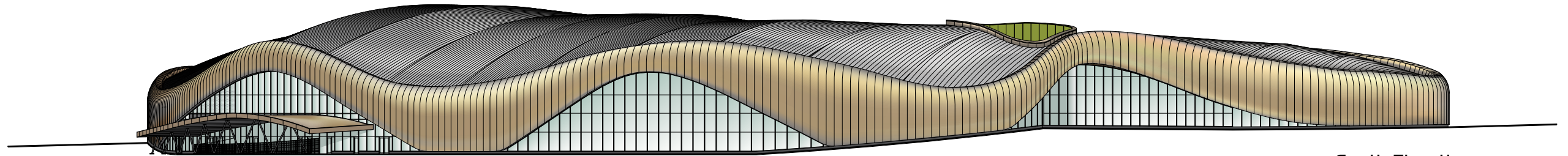
Level Three Floor Plan (Running Track Level)



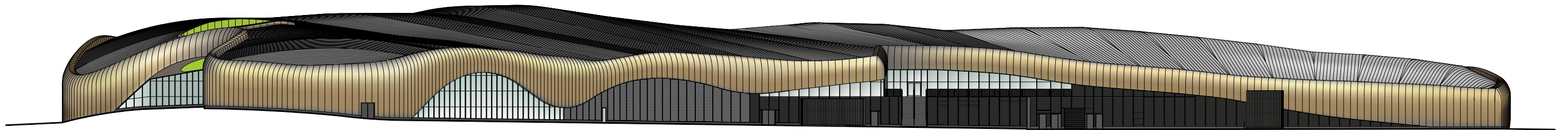
# ELEVATIONS



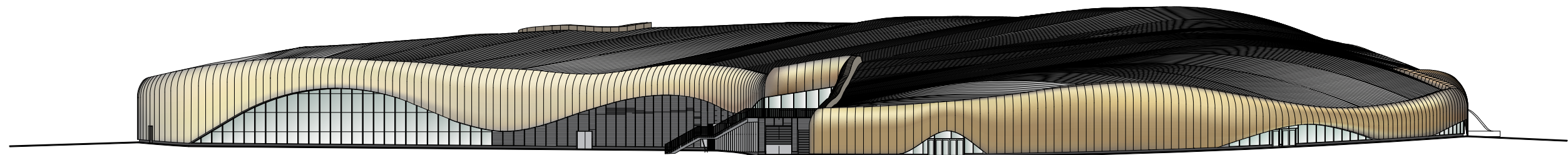
West Elevation



South Elevation



East Elevation



North Elevation



# EXTERIOR RENDERINGS





# EXTERIOR RENDERINGS



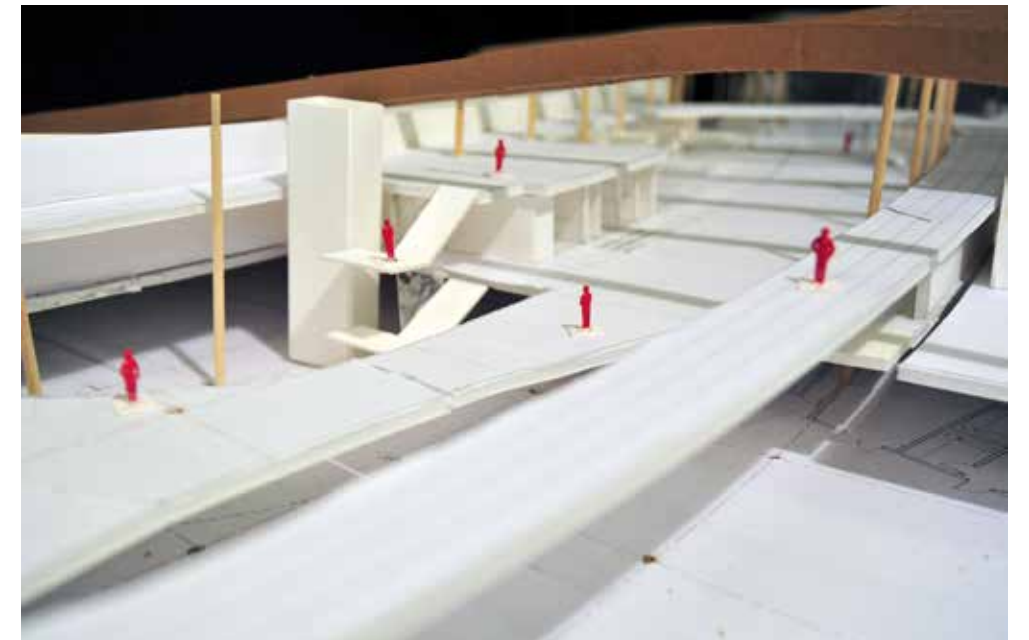
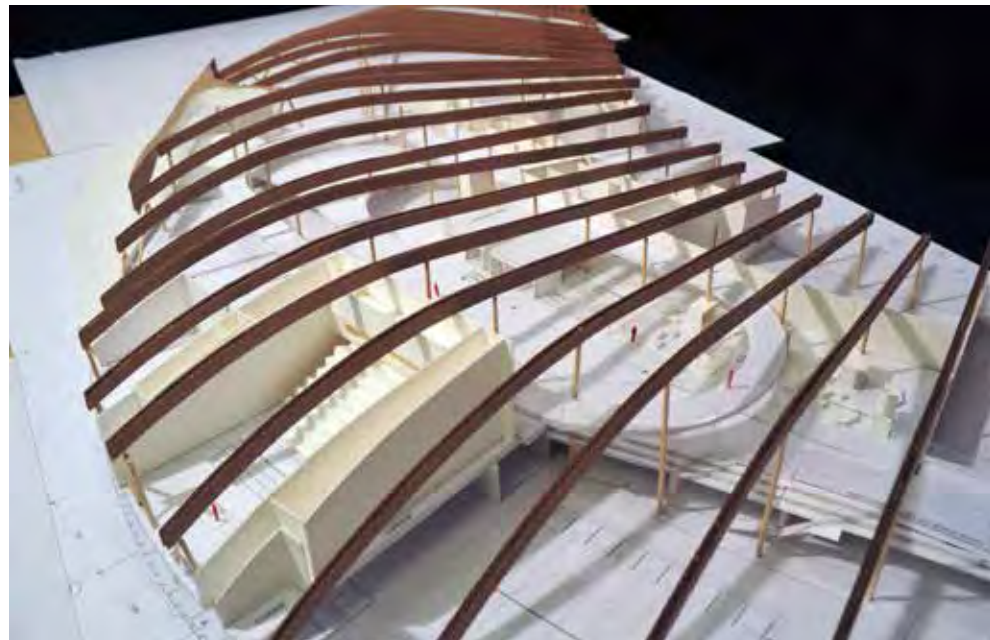
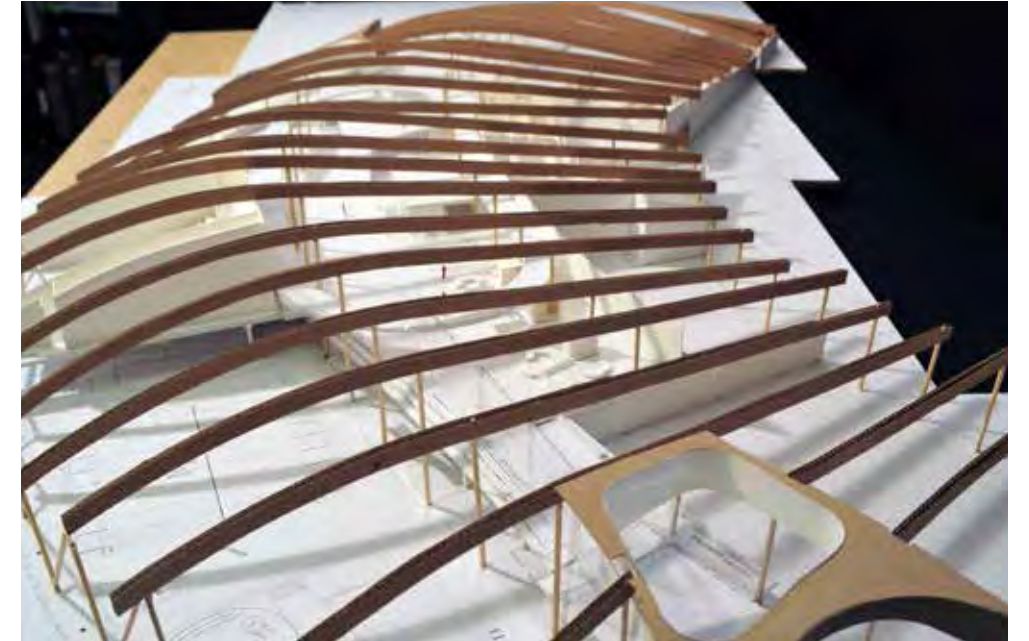
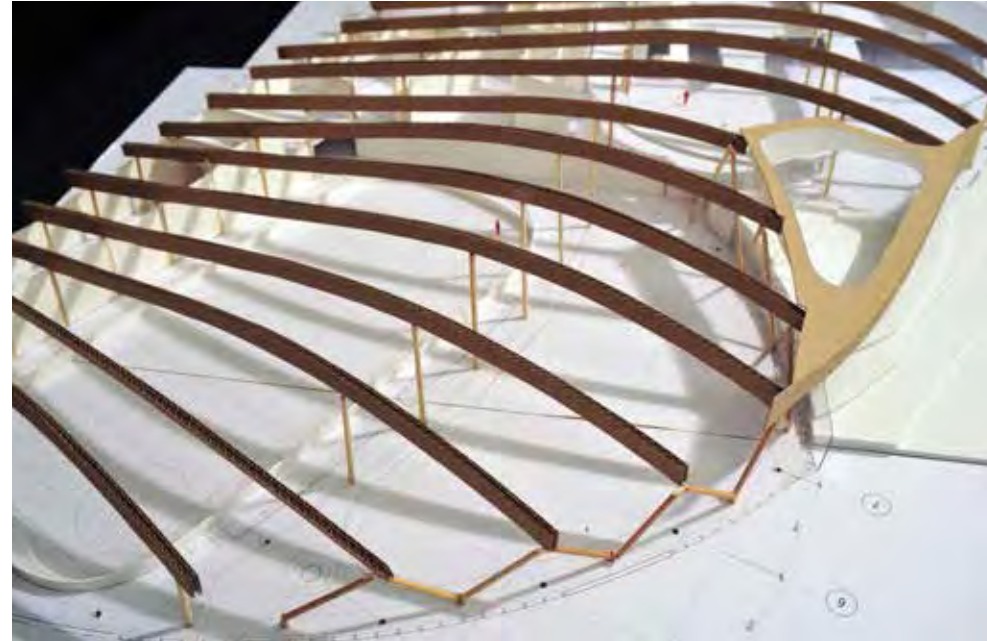
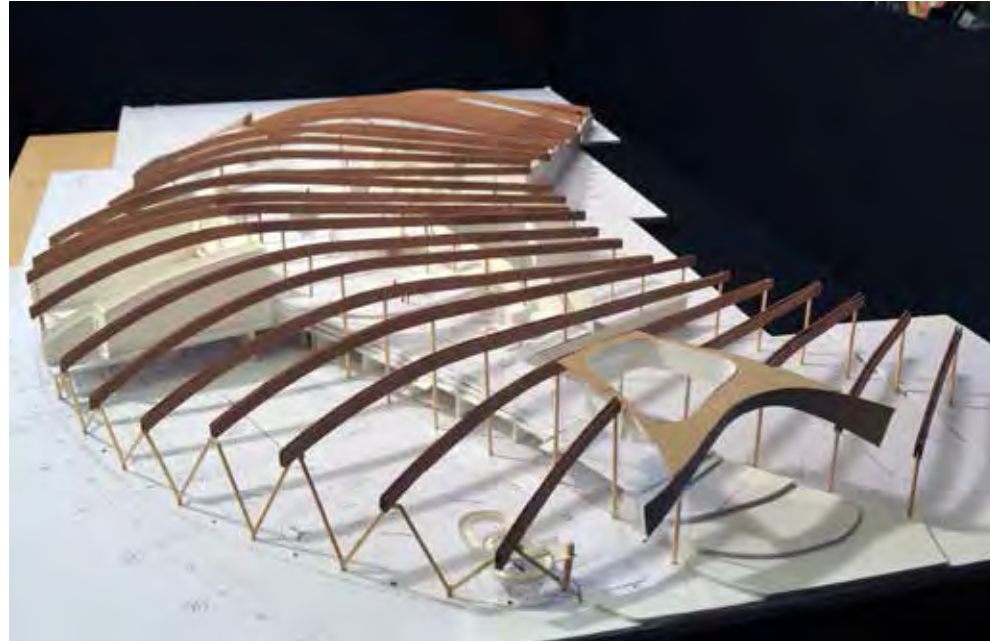


# EXTERIOR RENDERINGS





# MODEL IMAGES





# FITNESS AREA





# AQUATICS





# LEISURE ICE





# RECREATION ICE







**Calgary**  
Suite 300, 2207 4<sup>th</sup> Street SW  
Calgary, AB T2S 1X1  
T: 403.283.7796  
F: 403.283.7779

**Edmonton**  
#104, 10345 – 105<sup>th</sup> Street  
Edmonton, AB T5J 1E8  
T: 780.421.8060  
F: 780.756.9015