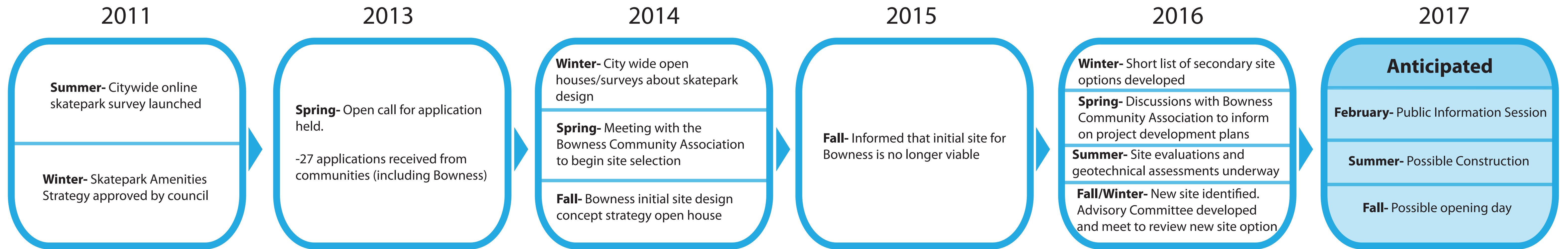


GENESIS PROJECT TIMELINE



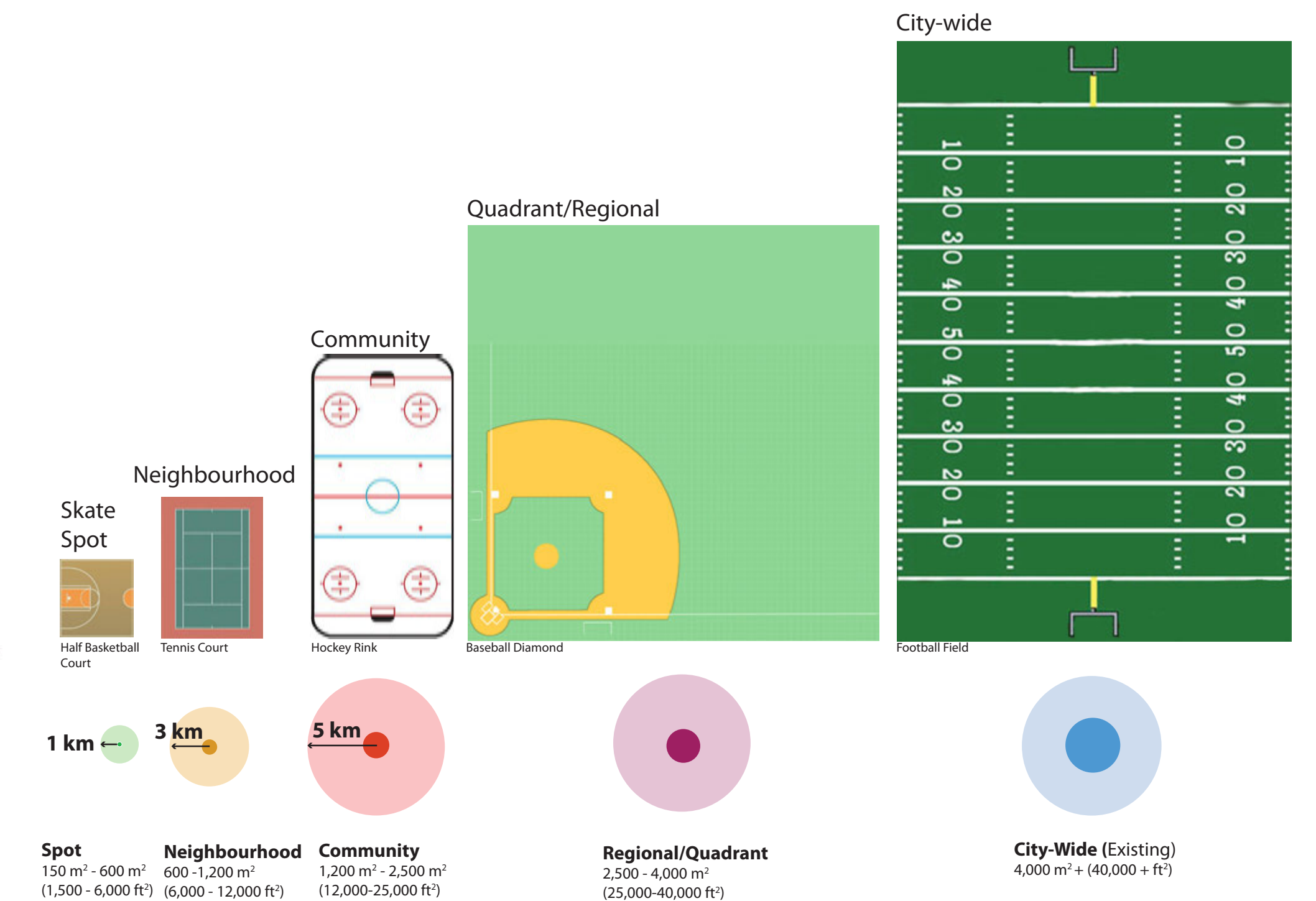
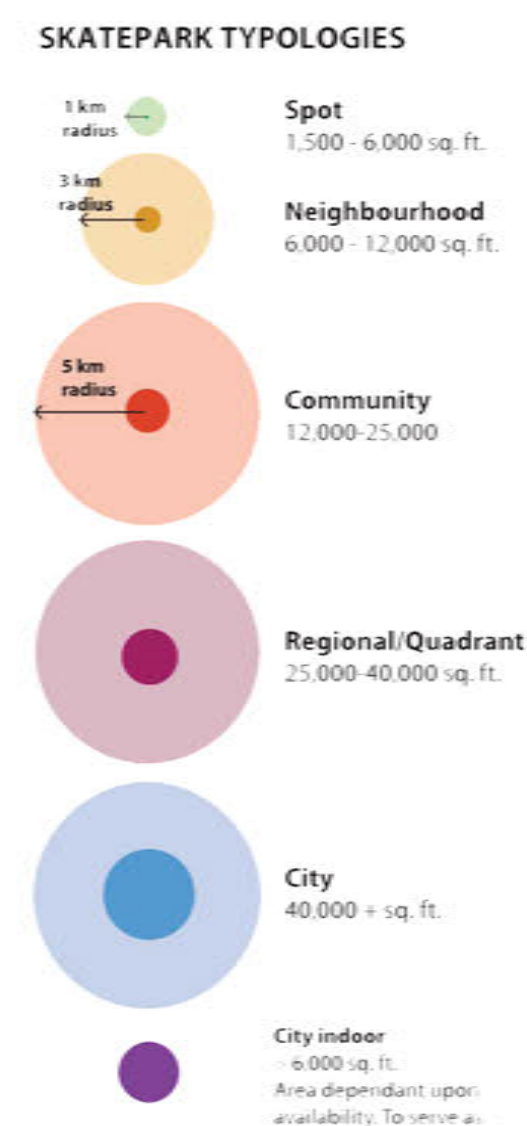
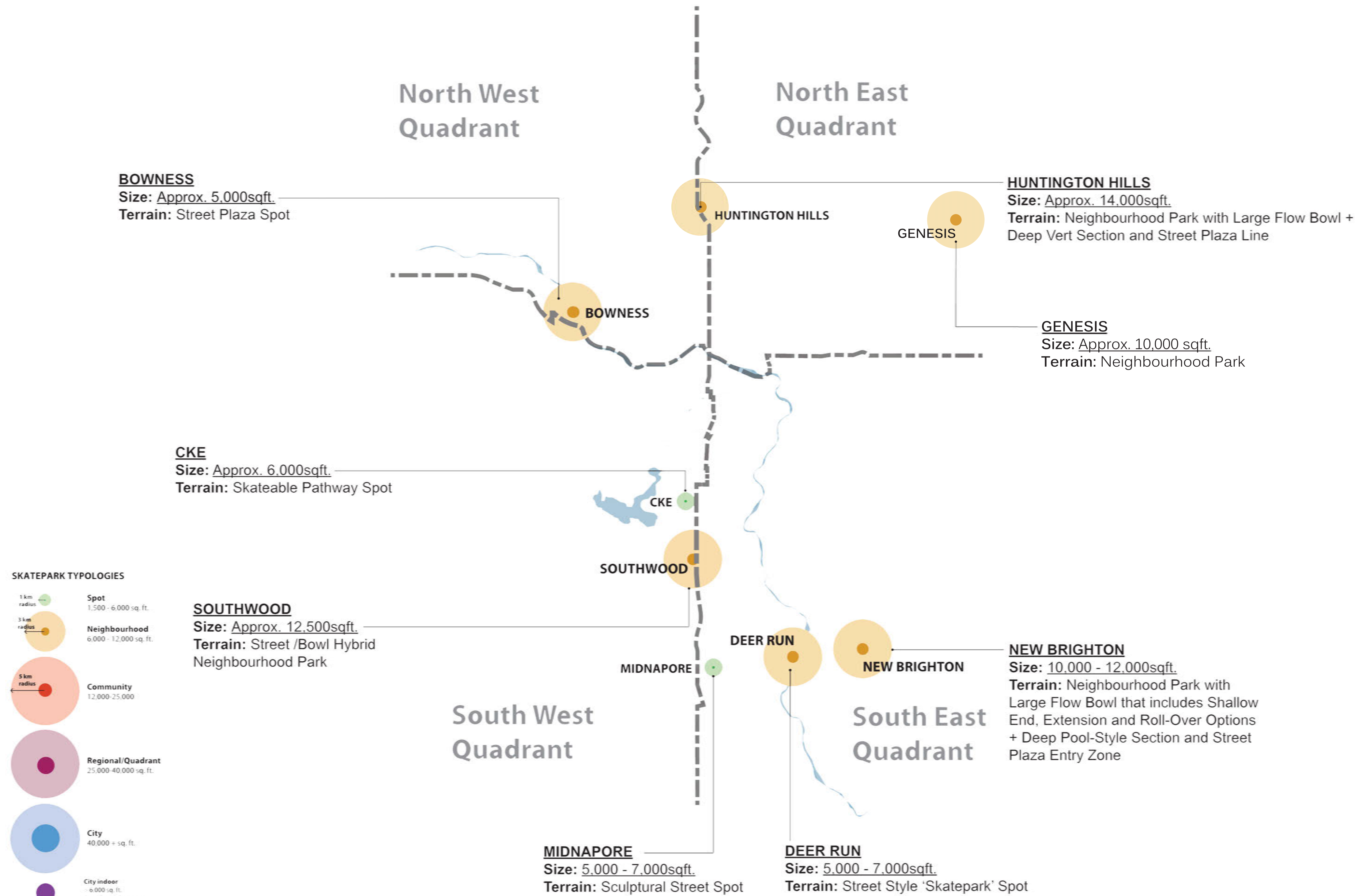
CALGARY SKATEBOARDING AMENITIES STRATEGY CONSTRUCTION TIMELINE

	2015	2016	2017
CKE Skatepark	X		
Southwood Skatepark	X		
Huntington Skatepark	X		
New Brighton Skatepark		X	
Deer Run Skatepark		X	
Midnapore Skatepark		X	
Bowness Skatepark			X
Genesis			Anticipated



PARK LOCATIONS

TYPOLOGIES EXAMPLES



Skatespot: Comparable to CKE



Neighbourhood Park: Comparable to New Brighton



Community Park: Comparable to Huntington Hills



Regional: Comparable to Chinook Winds - Airdrie

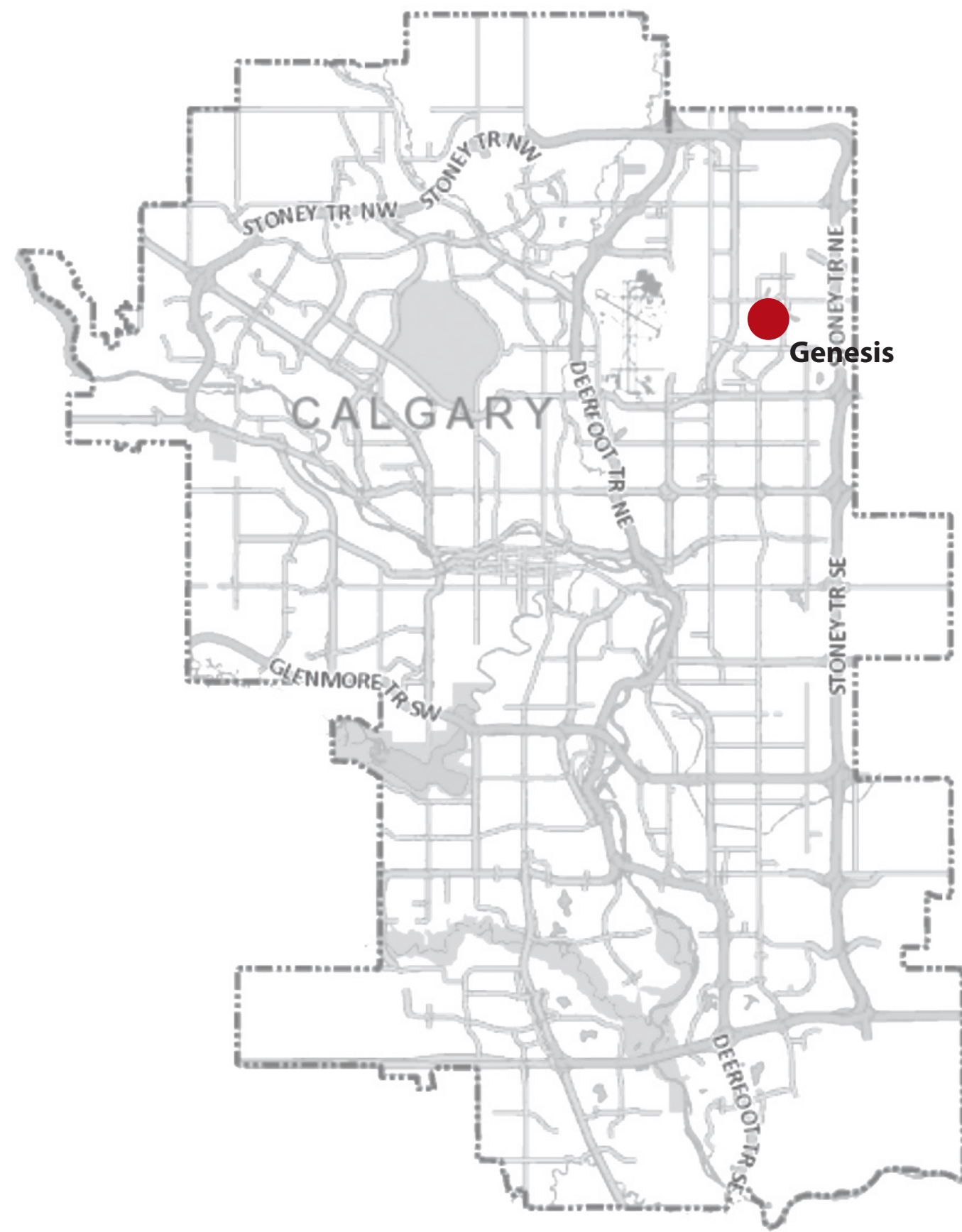


City Wide Park: Comparable to Shaw Millennium Park



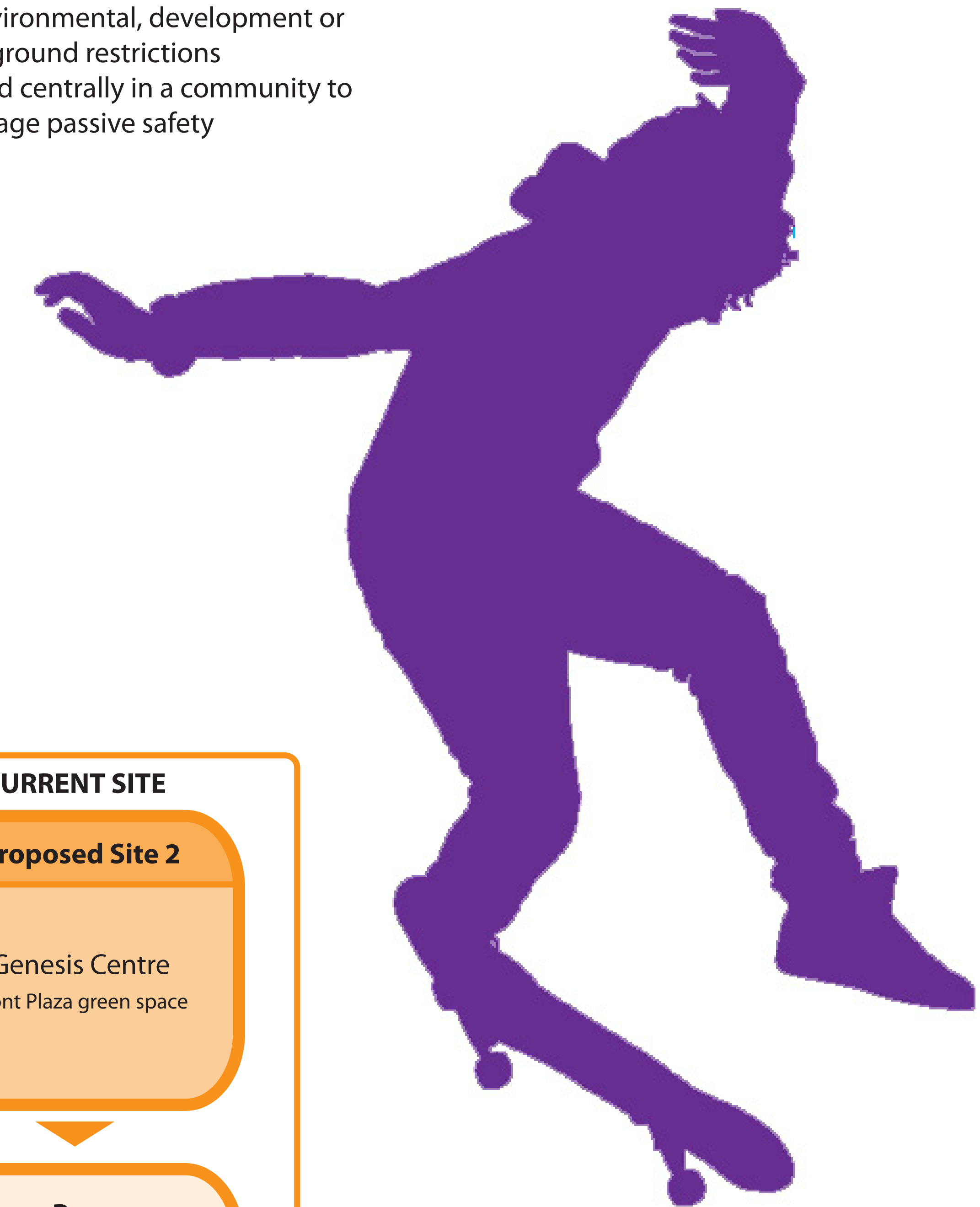
SITE HISTORY & SITE SELECTION CRITERIA

PROJECT LOCATION



SITE SELECTION CRITERIA

- City land
- No other developments planned
- No pre-existing uses on the land
- Supported by other City amenities
- No environmental, development or underground restrictions
- Located centrally in a community to encourage passive safety



SITE SELECTION

Review of NE quadrant

- Ensuring distribution of parks across the network for ease of access for all Calgarians
- Identify area within the NE quadrant to locate park
- Review of Mobile Skatepark attendance and bookings history

Proposed Site 1

Saddletown C-Train Station

Green space across from C-train station, behind businesses and beside Calgary Police Station

Pros

- Located near public amenities (stores, C – Train)
- Located close to Police for passive security
- Located near playground structures

Cons

- Ground not suitable for development
- Limited space due to site layout would impact possible design

CURRENT SITE

Proposed Site 2

Genesis Centre
Front Plaza green space

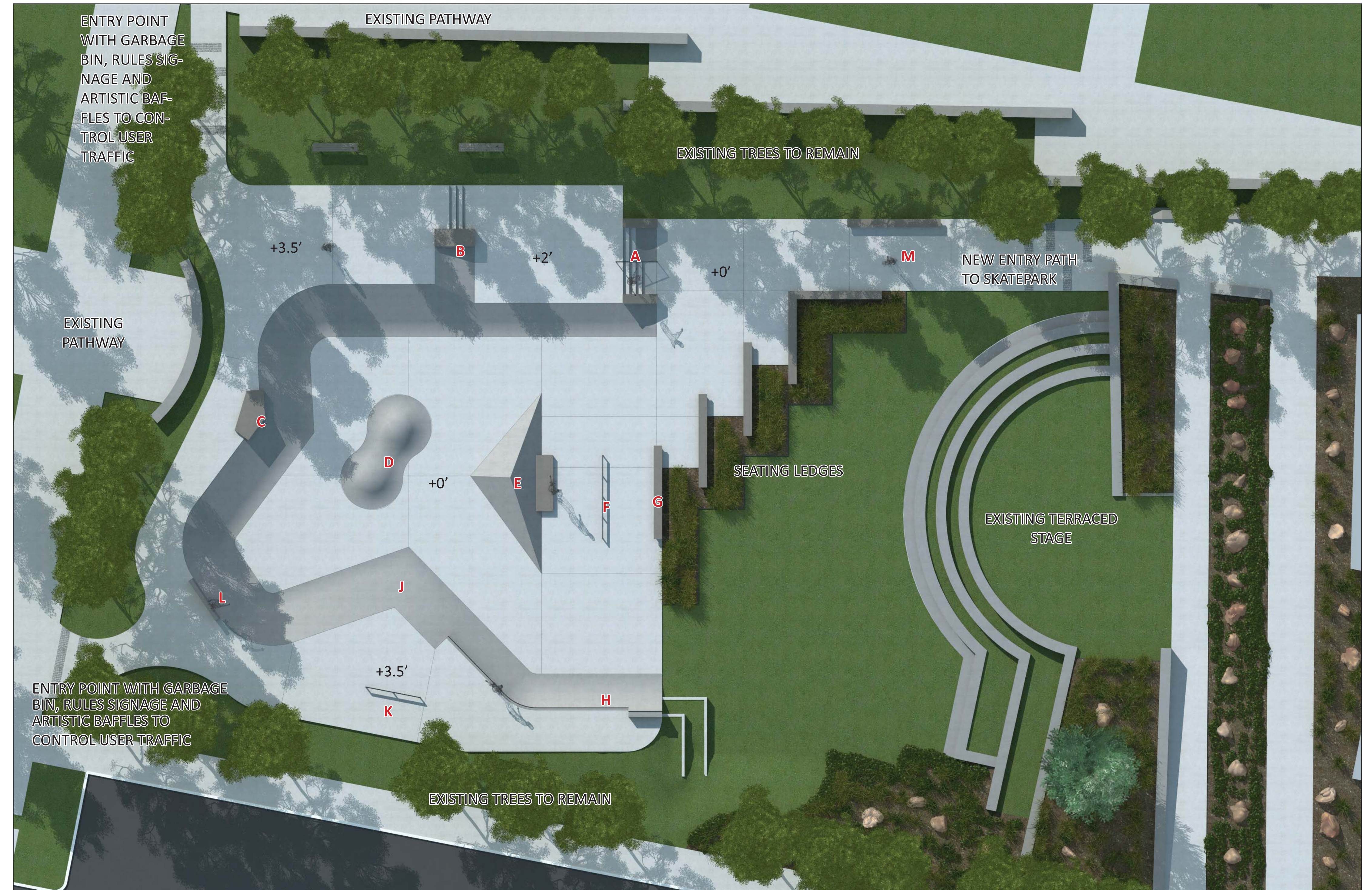
Pros

- Located at a Community hub
- Supported by other Recreation amenities
- Nearest to new school
- Passive security provided

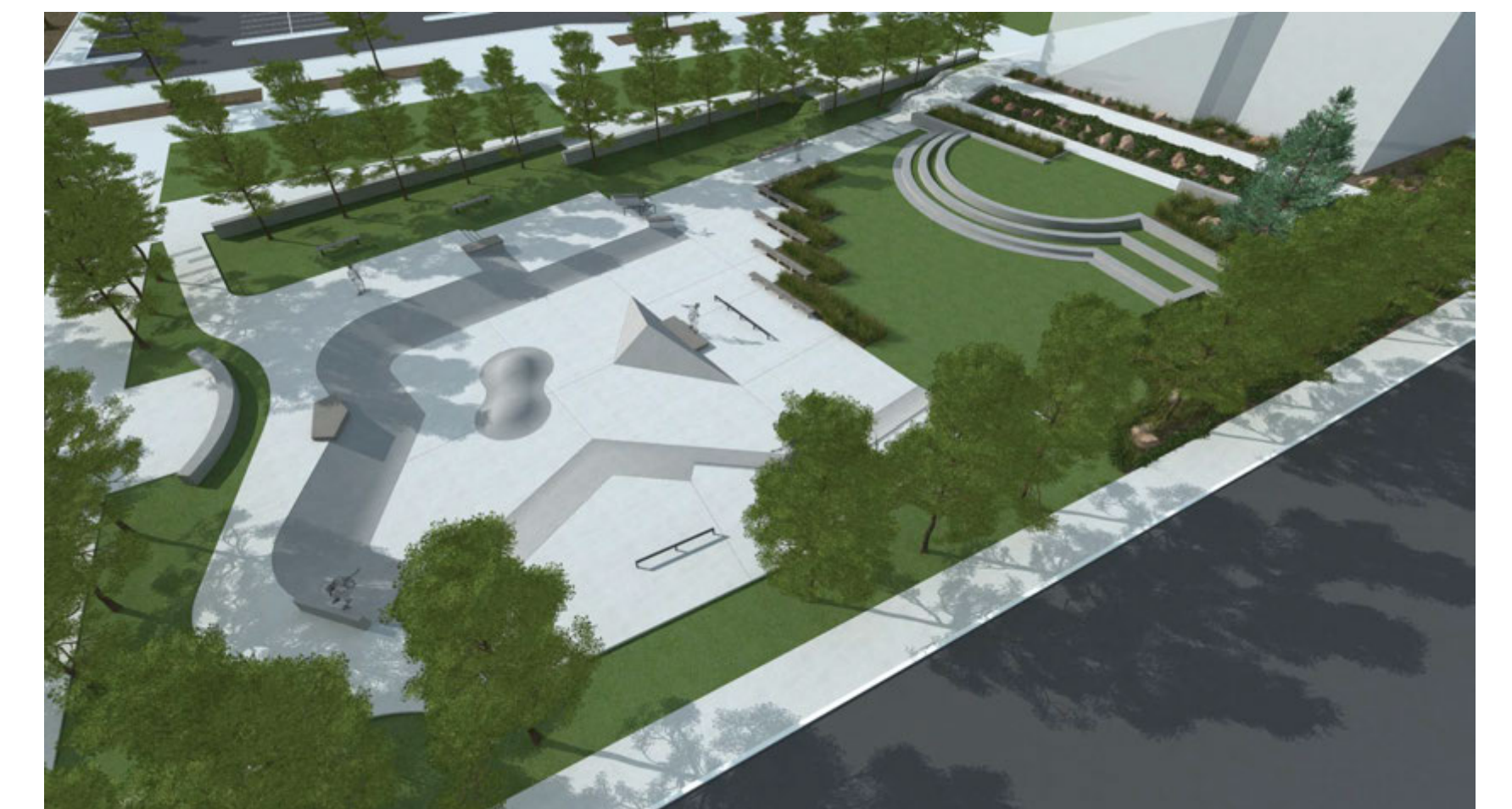
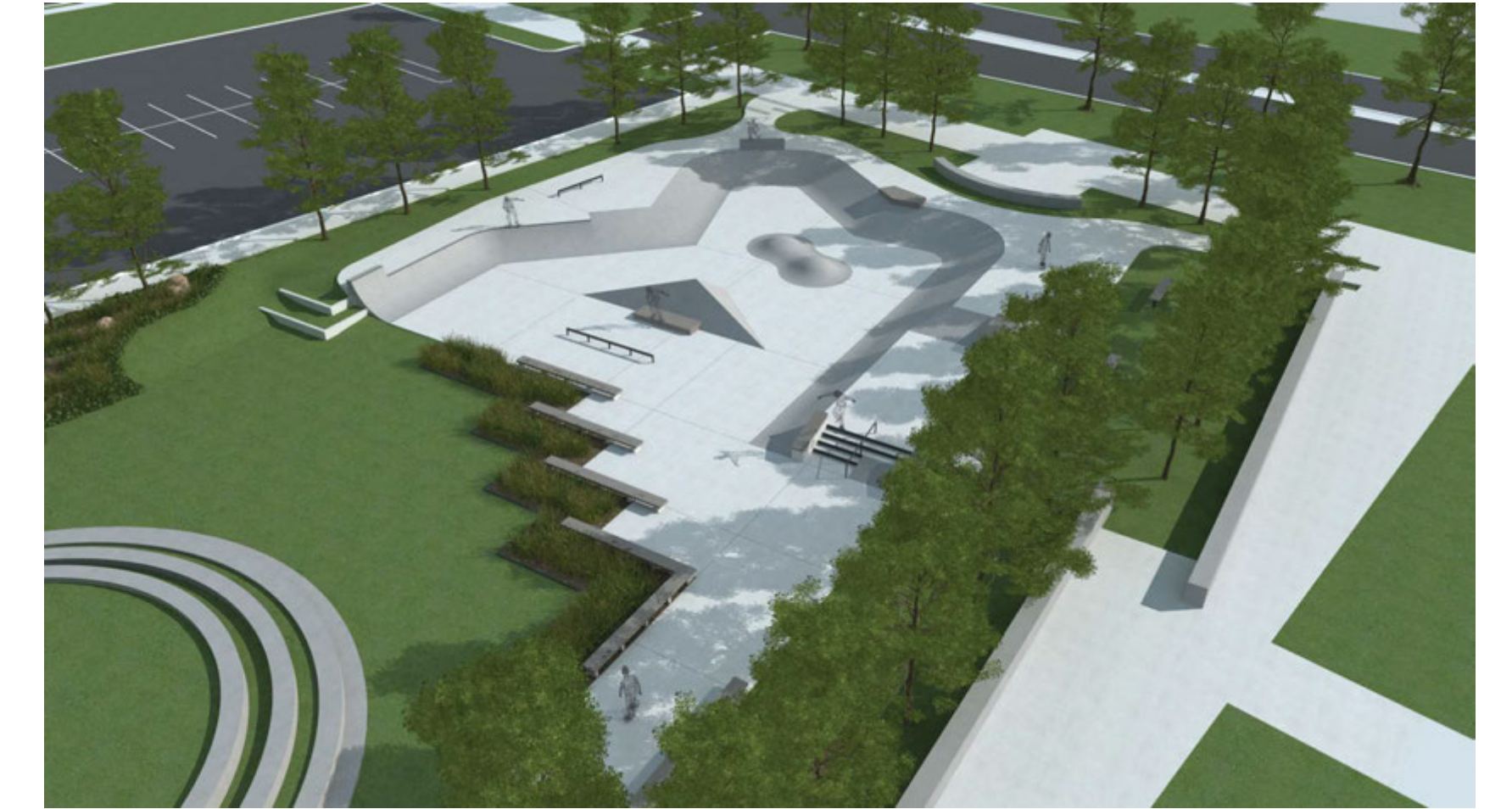
SITE PLAN

FEATURE LIST

- A:** 4 Stair set with hubba ledges, down rail and up-gap
- B:** 3 Stair set with Pier 7 manual pad and bank
- C:** Bank hip to ledge
- D:** peanut pump bump
- E:** Pyramid with manual pad
- F:** Round flat rail
- G:** 14" high flat ledge
- H:** Quarterpipe with extension
- J:** Bank hip
- K:** Square tube flat rail
- L:** Bank to curb
- M:** 16" high flat ledge



3D RENDER



3D RENDER

