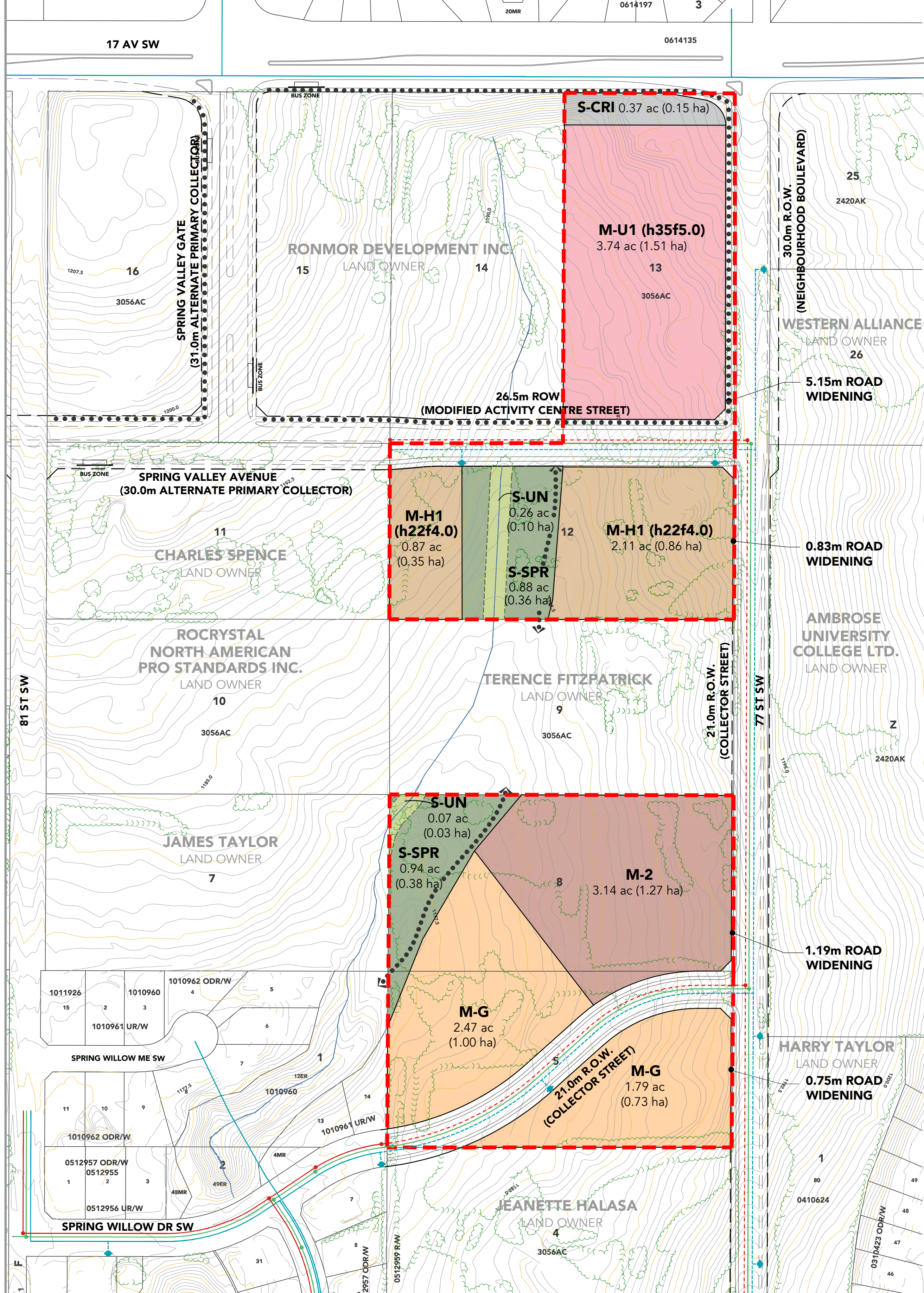


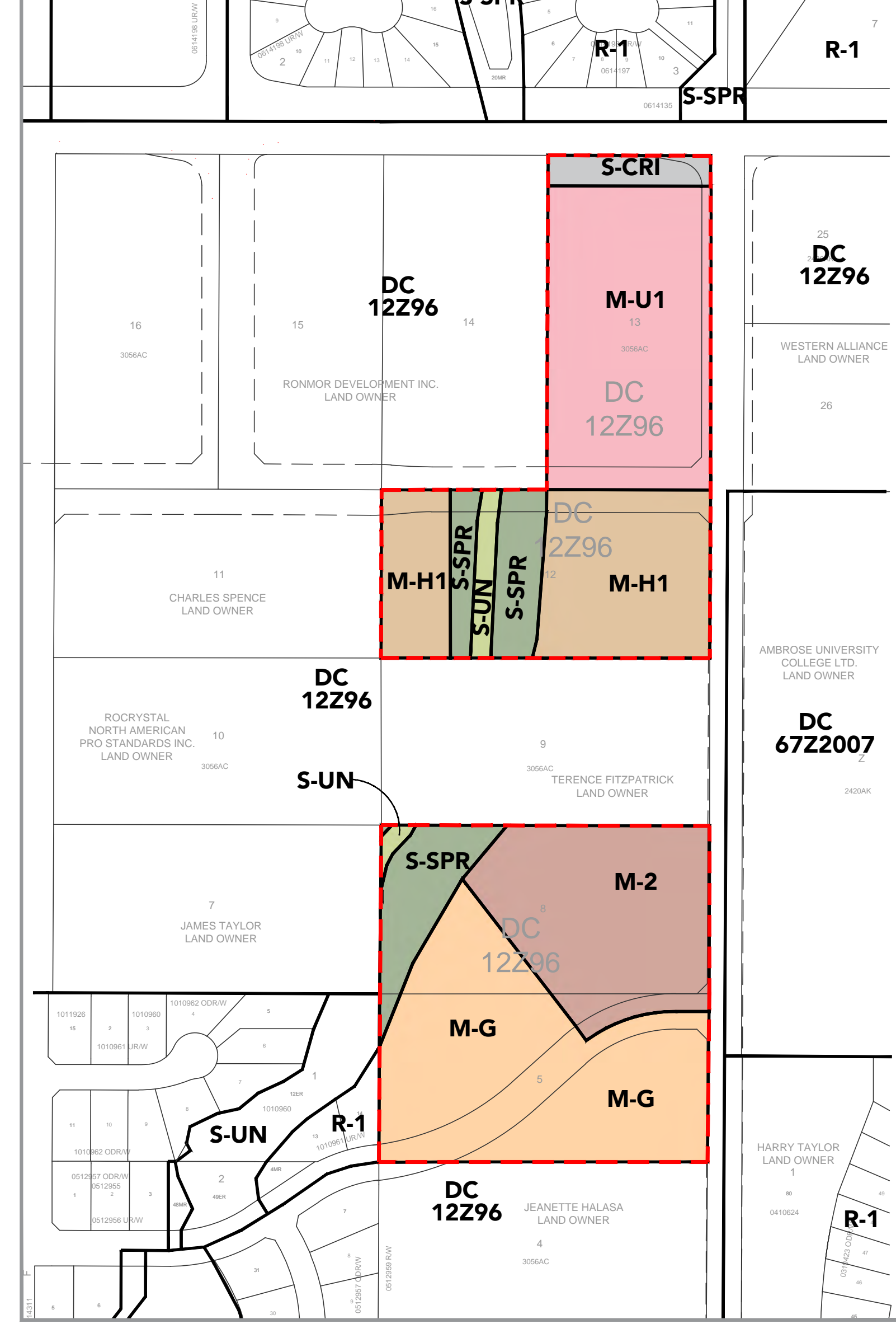
PROPOSED OUTLINE PLAN

Scale 1:1500



PROPOSED LAND USE REDESIGNATION

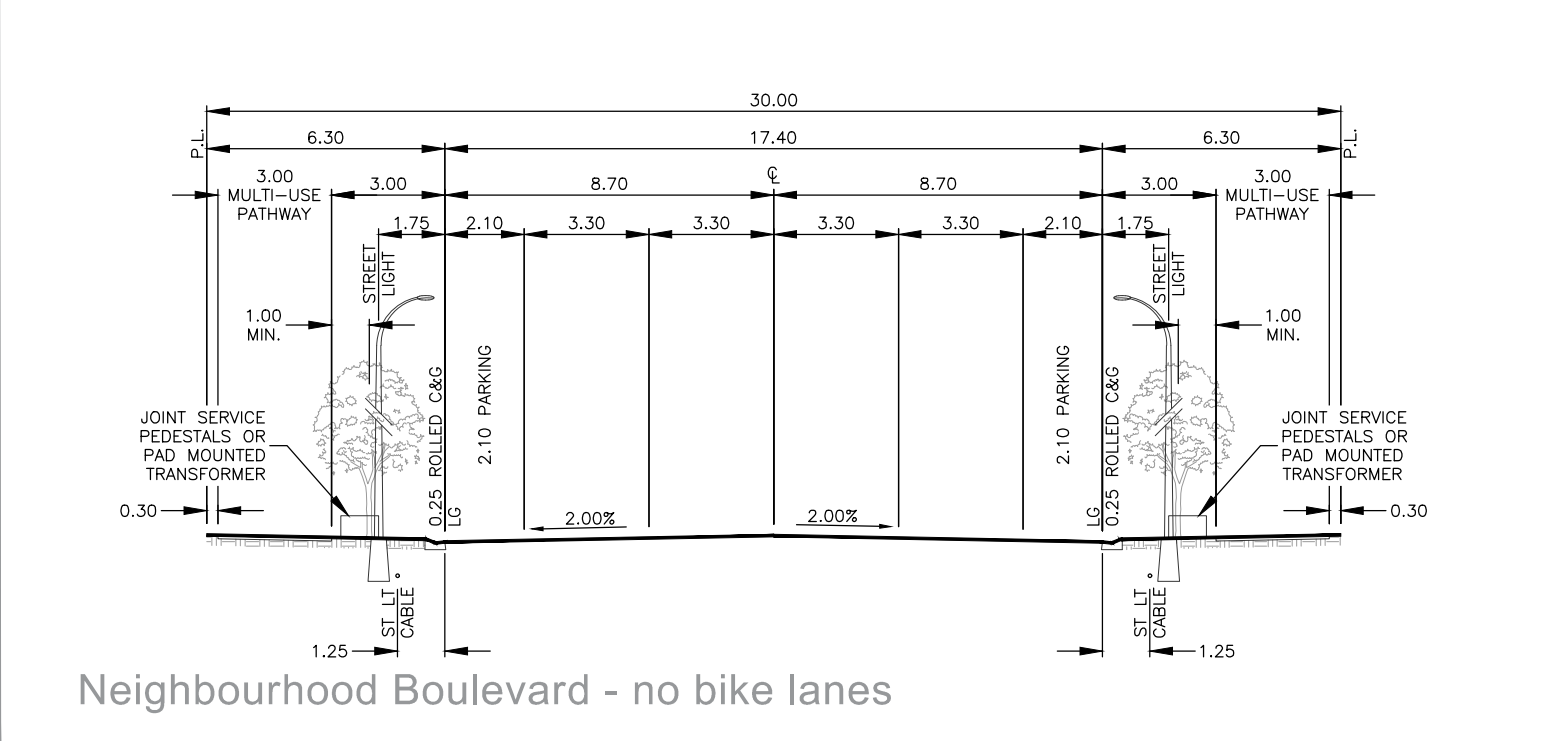
Scale 1:2500



Legend

- - - Outline Plan Boundary
- 2.5m Paved Sidewalk
- 3.0m Regional Path Connection
- ~ Contours (0.25m Intervals)
- ~ Existing Vegetation
- - - Proposed Sanitary Line
- - - Proposed Water Line
- - - Proposed Storm Line
- Existing Sanitary Line
- Existing Water Line
- Existing Storm Line

Road Cross Sections



Outline Plan Statistics

	±Acres	±Hectares	%
Total Site Areas	19.04	7.70	
Special Purpose (S-UN)	0.33	0.13	
Urban Nature District			
Special Purpose (S-CRI)	0.37	0.15	
City & Regional Infrastructure District			
Net Developable	18.34	7.42	100.00
Multi- Residential (M-G) at Grade Housing District	4.26	1.73	23.22
Multi- Residential (M-2) Medium Profile District	3.14	1.27	17.12
Multi- Residential (M-H1) Medium Profile District	2.98	1.21	16.24
Multi- Residential (M-U1) Medium Profile District	3.74	1.51	20.39
Special Purpose (S-SPR) School, Park & Community Reserve District	1.83	0.74	10.00
Roads & Road Widening	2.39	0.96	13.03

Land Use Statistics

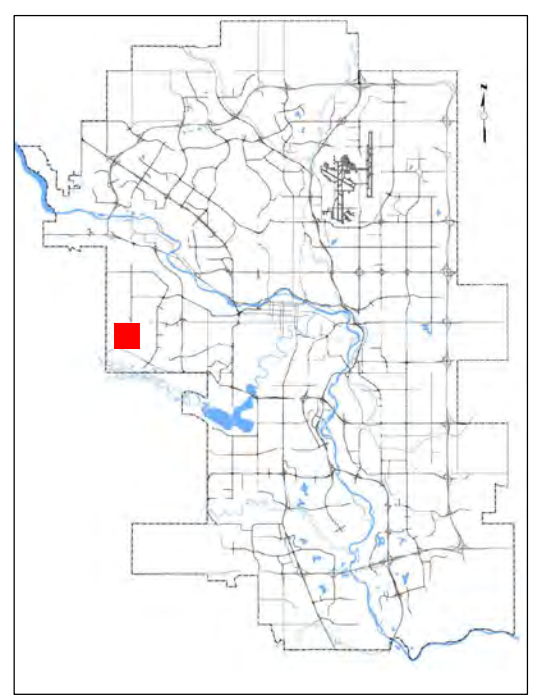
	±Acres	±Hectares
DC12Z96 to M-G	5.17	2.09
DC12Z96 to M-2	3.37	1.36
DC12Z96 to M-H1	3.45	1.40
DC12Z96 to M-U1	4.29	1.74
DC12Z96 to S-UN	0.36	0.15
DC12Z96 to S-SPR	1.97	0.79
DC12Z96 to S-CRI	0.43	0.17

Anticipated Density

Multi - Residential (M-G)	+/-79 units (19 upa) (46 uph)
Multi - Residential (M-2)	+/-192 units (60 upa) (152 uph)
Multi - Residential (MH1)	+/-324 units (109 upa) (270 uph)
Multi - Residential (M-U1)	+/-552 units (148 upa) (366 uph)
Total number of Units	1147 Units

OUTLINE PLAN & LAND USE

City of Calgary - Within the Springank Hill ASP Area
1919, 2025, 2229 & 2331 77 Street SW
Portion of NW 10 - 24 - 2 W5M



Date: 27.03.2018
Project: 14-018



FIG. 1