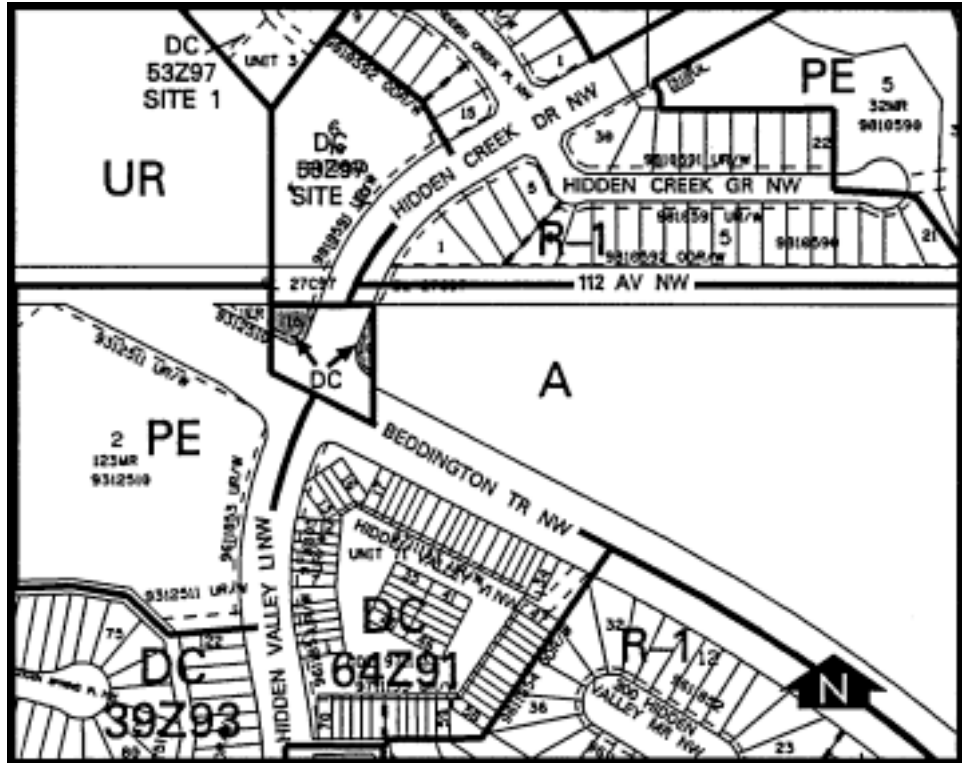


Amendment No. 98/088
Bylaw No. 121Z98
Council Approval: 09 November 1998

SCHEDULE B



1. Land Use

The land shall be used for privately owned and maintained ornamental entrance parks and associated community identification signage only.

2. Development Guidelines

The General Rules for Special Districts contained in Section 48 of Bylaw 2P80 and the Permitted and Discretionary Use rules of the A Agricultural and Open Space District shall apply unless otherwise noted below:

- a) The ornamental entrance park and associated community identification signage shall be developed to the satisfaction of the Approving Authority in consultation with the Director of Parks & Recreation.
- b) Approval of this application does not constitute approval of a Development Permit. Comprehensive plans, including building design, site layout, exterior

finishes and colour, landscaping, parking and access shall subsequently be submitted to the Approving Authority as part of a Development Permit application.