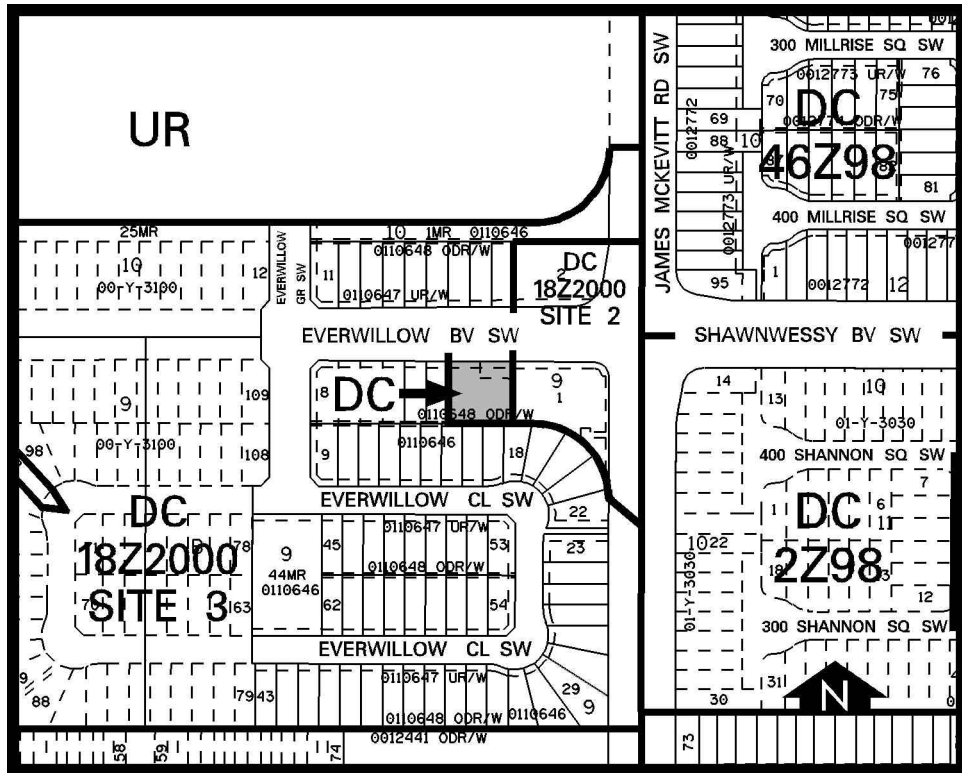


Amendment # 2001/002
Bylaw # 32Z2001
Council Approval: 2001 May 14

SCHEDULE B



DC DIRECT CONTROL DISTRICT

1. Land Use

The Permitted and Discretionary Uses of the R-1 Residential Single-Detached District of Bylaw 2P80 shall be the Permitted and Discretionary Uses respectively with the additional Discretionary Uses of parks, community identification signs and a homeowners association building.

2. Development Guidelines

The General Rules for Residential Districts contained in Section 20 of Bylaw 2P80 and the Permitted and Discretionary Use Rules of the R-1 Residential Single-Detached District shall apply.