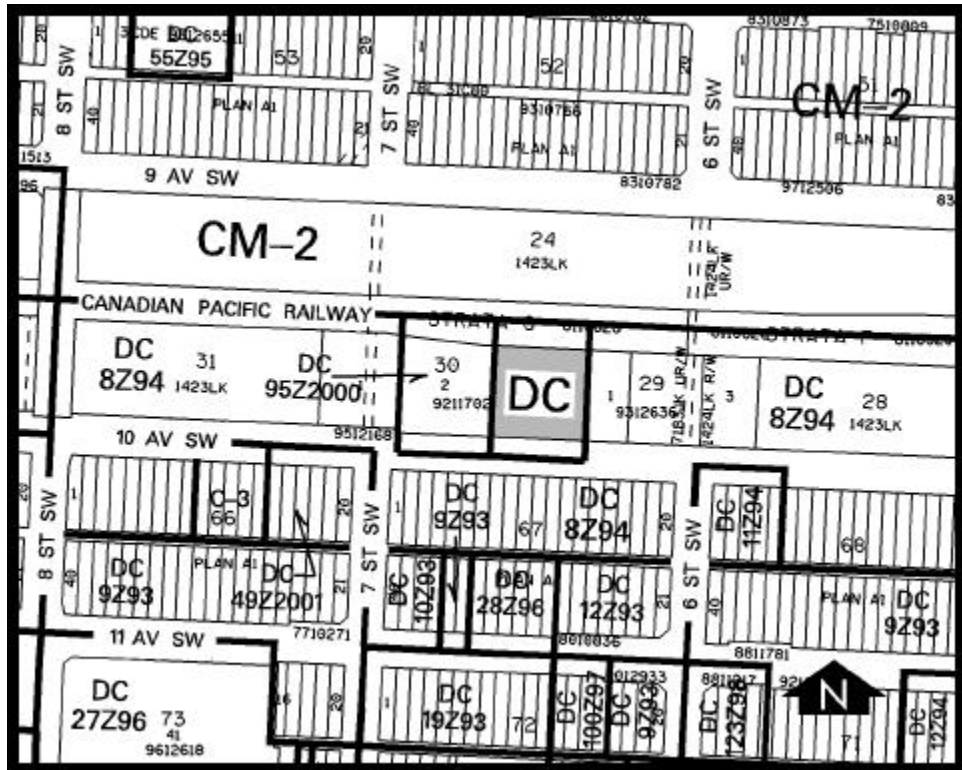


Amendment # 2001/086
Bylaw # 82Z2001
Council Approval: 2001 September 10

SCHEDULE B



DC DIRECT CONTROL DISTRICT

1. Land Use

The Permitted and Discretionary Uses of the C-4 General Commercial District of Bylaw 2P80 shall be the Permitted and Discretionary Uses respectively with the additional Discretionary Uses of apartment buildings and apartment-hotels.

2. Development Guidelines

The General Rules for Commercial Districts contained in Section 33 of Bylaw 2P80 and the Permitted and Discretionary Use Rules of the C-4 General Commercial District shall apply unless otherwise noted below:

(a) Commercial Component

The main floor shall be used for commercial uses only.

(b) Landscaped Area

A comprehensive landscape plan, satisfactory to the Development Authority, shall be submitted with a development permit application for this site.

(c) +15 Requirements

Any development on this site must provide for connection to and maintain the continuity of the +15 system between 10 Avenue SW and the downtown core. A development agreement shall be entered into at the time of development with respect to +15 and public space obligations.