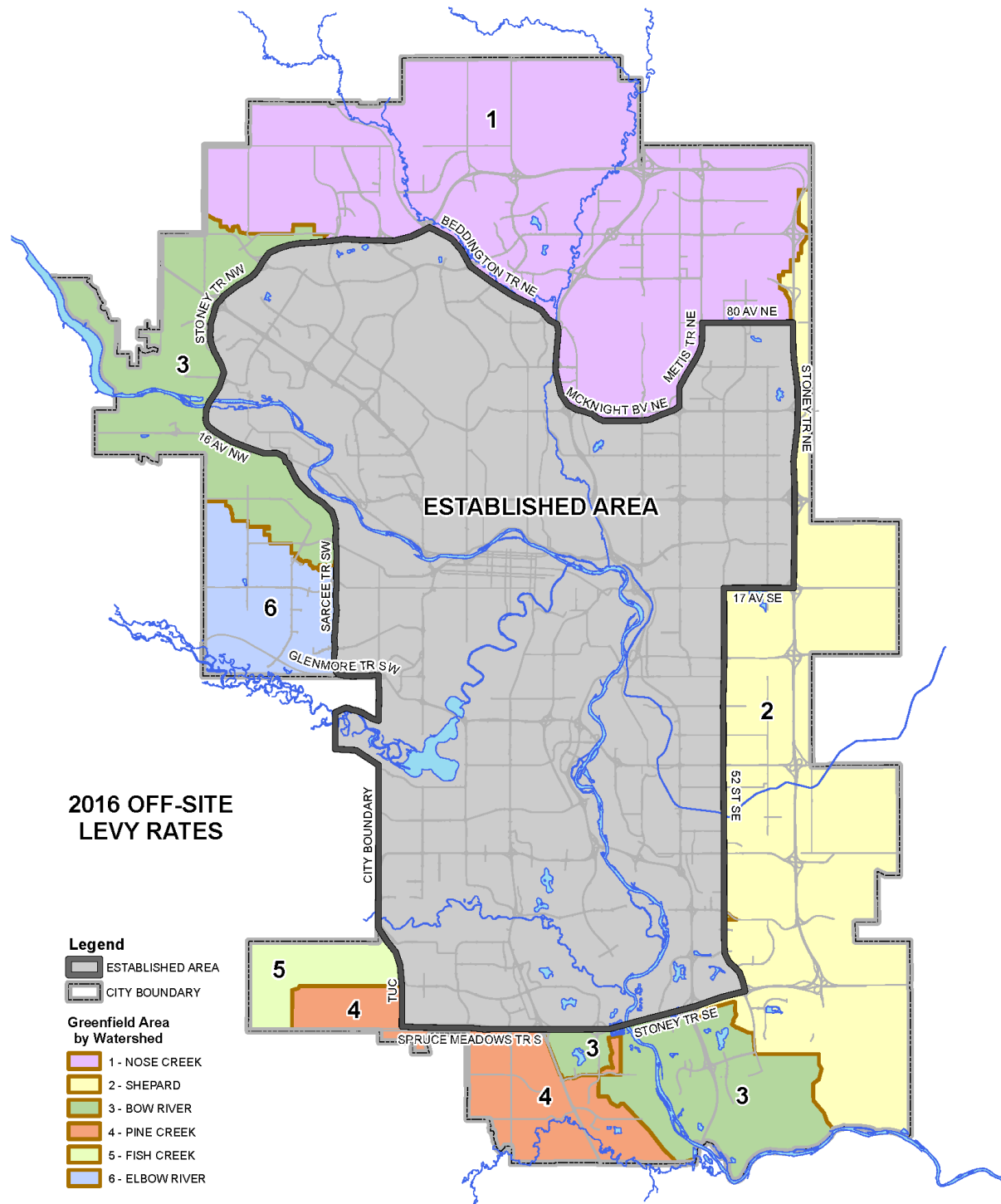




2016 Levies (Off-site Levy Bylaw 2M2016)



Greenfield Area

Levies are determined at the time of subdivision and area paid on a 3-year payment plan of 30%, 30% and 40% per year.

| Greenfield Area 2016 Levy Rate (\$/ha) | |
|--|-----------|
| 1 Nose Creek Watershed | \$354,548 |
| 2 Shepard Watershed | \$385,927 |
| 3 Bow River Watershed | \$350,206 |
| 4 Pine Creek Watershed | \$360,035 |
| 5 Fish Creek Watershed | \$343,223 |
| 6 Elbow River Watershed | \$343,223 |
| 2016 Community Services Charge (\$/ha) | |
| 1 Nose Creek Watershed | \$78,850 |
| 2 Shepard Watershed | \$78,850 |
| 3 Bow River Watershed | \$78,850 |
| 4 Pine Creek Watershed | \$78,850 |
| 5 Fish Creek Watershed | \$78,850 |
| 6 Elbow River Watershed | \$78,850 |

Established Area

Levies are determined through a development permit and are paid prior to development completion certificate. If a development reaches a density equivalent of 285 or more people and jobs per hectare, they qualify for the density incentive program and their levy rate is capped.

| Residential Levy Rate (\$/Unit) | |
|--|---------|
| Single Detached | \$2,089 |
| Semi-Detached/Duplex | \$1,873 |
| Multi-residential Grade-Oriented | \$1,297 |
| Multi-residential Non Grade-Oriented (2 bedroom or more) | \$1,081 |
| Multi-residential Non Grade-Oriented (1 bedroom or less) | \$864 |
| Non-Residential 2016 Levy Rate (\$/m2 Gross Floor Area) | |
| Commercial Development Levy Rate | \$12.21 |
| Industrial Development Levy Rate | \$5.86 |