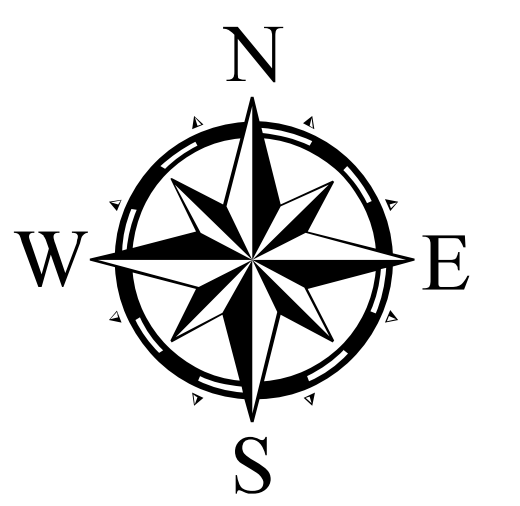




Capital Works - May 2025



TWP. 26

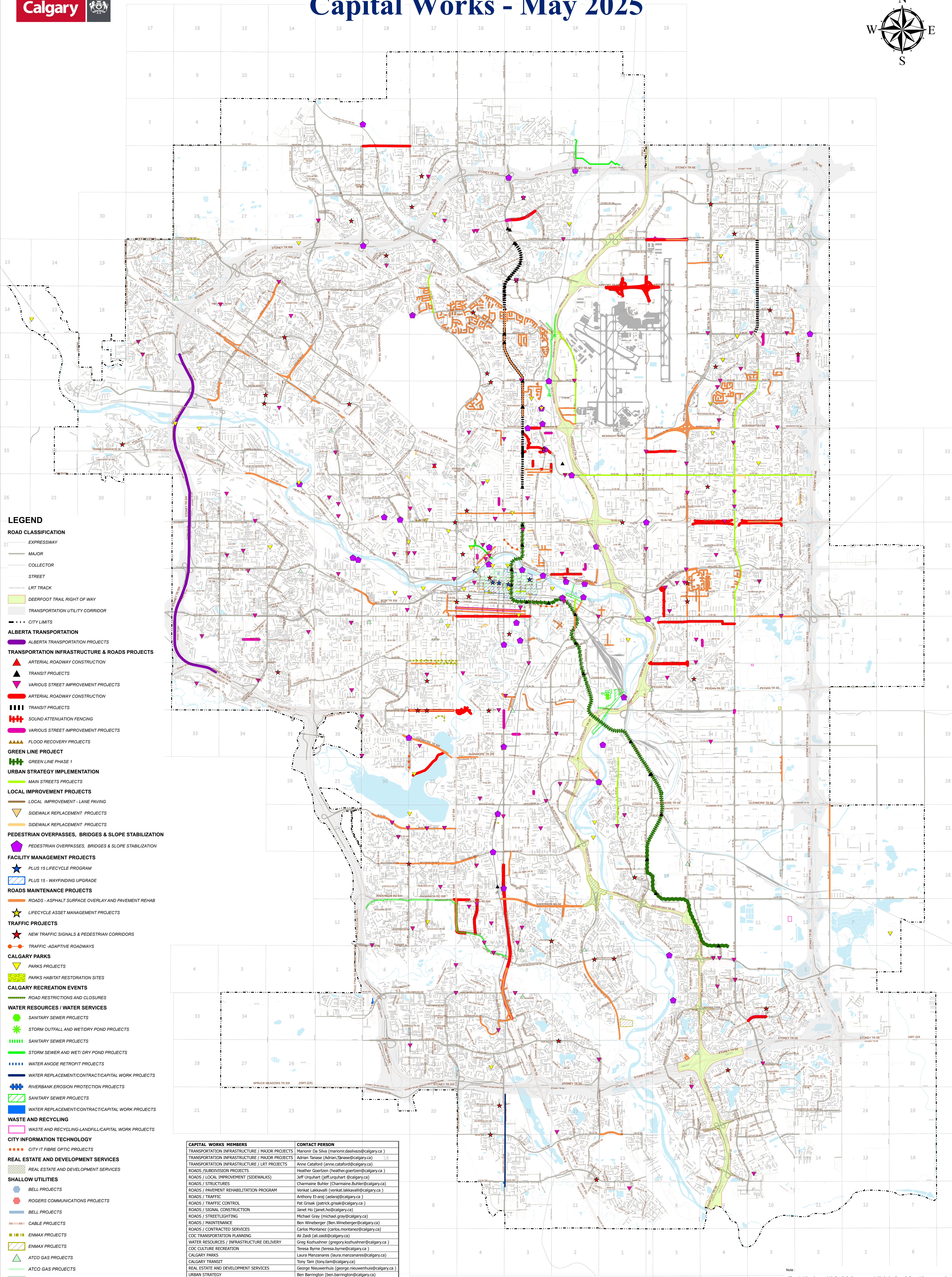
TWP. 25

TWP. 24

TWP. 23

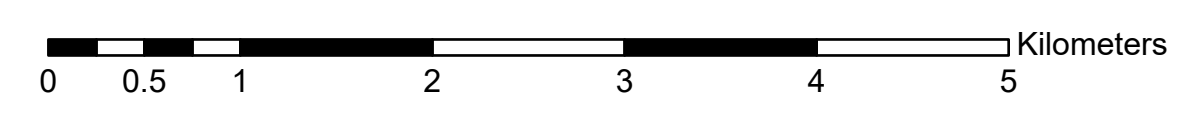
TWP. 22

TWP. 21



- LEGEND**
- ROAD CLASSIFICATION**
 - EXPRESSWAY
 - MAJOR
 - COLLECTOR
 - STREET
 - LRT TRACK
 - DEERFOOT TRAIL RIGHT OF WAY
 - TRANSPORTATION UTILITY CORRIDOR
 - CITY LIMITS
 - ALBERTA TRANSPORTATION**
 - ALBERTA TRANSPORTATION PROJECTS
 - TRANSPORTATION INFRASTRUCTURE & ROADS PROJECTS**
 - ARTERIAL ROADWAY CONSTRUCTION
 - TRANSIT PROJECTS
 - VARIOUS STREET IMPROVEMENT PROJECTS
 - ARTERIAL ROADWAY CONSTRUCTION
 - TRANSIT PROJECTS
 - SOUND ATTENUATION FENCING
 - VARIOUS STREET IMPROVEMENT PROJECTS
 - FLOOD RECOVERY PROJECTS
 - GREEN LINE PROJECT**
 - GREEN LINE PHASE 1
 - URBAN STRATEGY IMPLEMENTATION**
 - MAIN STREETS PROJECTS
 - LOCAL IMPROVEMENT PROJECTS**
 - LOCAL IMPROVEMENT - LANE PAVING
 - SIDEWALK REPLACEMENT PROJECTS
 - SIDEWALK REPLACEMENT PROJECTS
 - PEDESTRIAN OVERPASSES, BRIDGES & SLOPE STABILIZATION**
 - PEDESTRIAN OVERPASSES, BRIDGES & SLOPE STABILIZATION
 - FACILITY MANAGEMENT PROJECTS**
 - PLUS 15 LIFECYCLE PROGRAM
 - PLUS 15 - WAYFINDING UPGRADE
 - ROADS MAINTENANCE PROJECTS**
 - ROADS - ASPHALT SURFACE OVERLAY AND PAVEMENT REHAB
 - LIFECYCLE ASSET MANAGEMENT PROJECTS
 - TRAFFIC PROJECTS**
 - NEW TRAFFIC SIGNALS & PEDESTRIAN CORRIDORS
 - TRAFFIC -ADAPTIVE ROADWAYS
 - CALGARY PARKS**
 - PARKS PROJECTS
 - PARKS HABITAT RESTORATION SITES
 - CALGARY RECREATION EVENTS**
 - ROAD RESTRICTIONS AND CLOSURES
 - WATER RESOURCES / WATER SERVICES**
 - SANITARY SEWER PROJECTS
 - STORM OUTFALL AND WET/DRY POND PROJECTS
 - SANITARY SEWER PROJECTS
 - STORM SEWER AND WET/DRY POND PROJECTS
 - WATER ANODE RETROFIT PROJECTS
 - WATER REPLACEMENT/CONTRACT/CAPITAL WORK PROJECTS
 - RIVERBANK EROSION PROTECTION PROJECTS
 - SANITARY SEWER PROJECTS
 - WATER REPLACEMENT/CONTRACT/CAPITAL WORK PROJECTS
 - WASTE AND RECYCLING**
 - WASTE AND RECYCLING-LANDFILL/CAPITAL WORK PROJECTS
 - CITY INFORMATION TECHNOLOGY**
 - CITY IT FIBRE OPTIC PROJECTS
 - REAL ESTATE AND DEVELOPMENT SERVICES**
 - REAL ESTATE AND DEVELOPMENT SERVICES
 - SHALLOW UTILITIES**
 - BELL PROJECTS
 - ROGERS COMMUNICATIONS PROJECTS
 - BELL PROJECTS
 - CABLE PROJECTS
 - ENMAX PROJECTS
 - ENMAX PROJECTS
 - ATCO GAS PROJECTS
 - ATCO GAS PROJECTS
 - ATCO GAS PROJECTS
 - ATCO GAS TRANSMISSION PROJECTS
 - ATCO GAS TRANSMISSION PROJECTS

CAPITAL WORKS MEMBERS	CONTACT PERSON
TRANSPORTATION INFRASTRUCTURE / MAJOR PROJECTS	Marion Da Silva (marion.da.silva@calgary.ca)
TRANSPORTATION INFRASTRUCTURE / MAJOR PROJECTS	Adrian Tanase (Adrian.Tanase@calgary.ca)
TRANSPORTATION INFRASTRUCTURE / LRT PROJECTS	Anne Catalford (anne.catalford@calgary.ca)
ROADS / SUBDIVISION PROJECTS	Heather Goertzen (heather.goertzen@calgary.ca)
ROADS / LOCAL IMPROVEMENT (SIDEWALKS)	Jeff Urquhart (jeff.urquhart@calgary.ca)
ROADS / STRUCTURES	Charmaine Butler (Charmaine.Butler@calgary.ca)
ROADS / PAVEMENT REHABILITATION PROGRAM	Venkat Lakshminarayana (venkat.lakshminarayana@calgary.ca)
ROADS / TRAFFIC	Anthony El-ara (anthony.elara@calgary.ca)
ROADS / TRAFFIC CONTROL	Pat Grisak (pat.grisak@calgary.ca)
ROADS / SIGNAL CONSTRUCTION	Janet Ho (janet.ho@calgary.ca)
ROADS / STREETLIGHTING	Michael Gray (michael.gray@calgary.ca)
ROADS / MAINTENANCE	Ben Weinberger (Ben.Weinberger@calgary.ca)
ROADS / CONTRACTED SERVICES	Carlos Montanez (carlos.montanez@calgary.ca)
COC TRANSPORTATION PLANNING	Ali Zaidi (ali.zaidi@calgary.ca)
WATER RESOURCES / INFRASTRUCTURE DELIVERY	Greg Kozhushner (greg.kozhushner@calgary.ca)
COC CULTURE RECREATION	Teresa Byrne (teresa.byrne@calgary.ca)
CALGARY PARKS	Laura Manzanarez (laura.manzanarez@calgary.ca)
CALGARY TRANSIT	Tony Tam (tony.tam@calgary.ca)
REAL ESTATE AND DEVELOPMENT SERVICES	George Neuenhuis (george.neuenhuis@calgary.ca)
URBAN STRATEGY	Ben Barrington (ben.barrington@calgary.ca)
ROGERS COMMUNICATIONS	Lloyd Boulter
ALBERTA TRANSPORTATION	Alan Dixon (alan.dixon@gov.ab.ca)
ATCO GAS AND PIPELINES	Kathleen Knox (kathleen.knox@atco.com)
ENMAX DISTRICT ENERGY	Sheryl Pui (spui@enmax.com)
ENMAX POWER	Cary Sabraw (csabraw@enmax.com)
SHAW CABLE	RJ Callaghan (rj.callaghan@shaw.ca)
TELUS	Sherif Gress (sherif.gress@telus.com)
BELL	Peter Kirillo (peter.kirillo@bell.ca)



Note:
 - All provincial roadways outside the city limits are represented by broken lines whether existing or proposed.
 - This plan is intended as a conceptual representation of Calgary's existing and future transportation networks, road designations and alignments contained in various planning documents.
 © 2025, The City of Calgary. All rights reserved.
 No part of this drawing may be reproduced in any form or by any means without the prior written consent of The City of Calgary. The City of Calgary used commercially reasonable efforts to ensure the accuracy and reliability of the drawings.
 Notwithstanding, The City of Calgary disclaims all warranties or conditions, express or implied, including without limitation, warranties and conditions of merchantability and fitness for any particular purpose or non-entanglement. The City of Calgary is not responsible for any direct, indirect, incidental, consequential or other damages resulting from the use, misuse or misinterpretation of the drawings.
 Prepared by: I&M Urban Design