

2017 Calgary Truck Route MAP



LEGEND

- A** No trucks 19:00 – 07:00
- B** No trucks 23:00 – 07:00
- C** No trucks 19:00 – 07:00 Mon – Fri & No Trucks All Day Saturday
- D** Maximum Three-Axle Trucks
- Orange Circles Traffic Circles
- Dangerous Goods Route
- Future Truck Route
- Future Dangerous Goods Route
- Truck Route
- Restricted Truck Route
- TUC
- Unrestricted Truck Route Area
- Major Parks
- LRT
- Central Business District
- Unrestricted Truck Route with Dangerous Goods Restrictions

ATTENTION TRUCKERS!

To contact 311 from outside the city, call (403) 243-0776

All persons using this information are reminded that it has been consolidated for information purposes and that it has no legal force or effect. Consult the relevant Acts or Bylaws for the purpose of interpreting and applying the law.

- The Traffic Bylaws that apply to the City of Calgary
- The City of Calgary Traffic Bylaws
- The City of Calgary Transport of Dangerous Goods Bylaws
- The City of Calgary Code Standard #1 (Cargo Securement)

Four new routes:

- Blacksburg Trail from Stony Trail to South City Limits
- North Hill from Stony Trail to South City Limits
- Sutton Boulevard from Deerfoot Trail to South City Limits
- Sutton Boulevard from Stony Trail to South City Limits

Summary of Penalties

Traveling off truck route	\$500
Parked off truck route	\$215
Procedure load	\$250
Using engine retarder brake within city limits	\$250
Transporting dangerous goods off route	\$400
Truck parked on private property without permission	\$300

Overweights

Truck over 4,500 kg parked on residential street \$75

Trucks over 4,500 kg parked on residential area \$215 between 20:00 – 08:00

Overweight (on axle or posted restriction) \$100 per each 500 kg

Overweights over DW

up to 5,000 kg over \$25 per 100kg

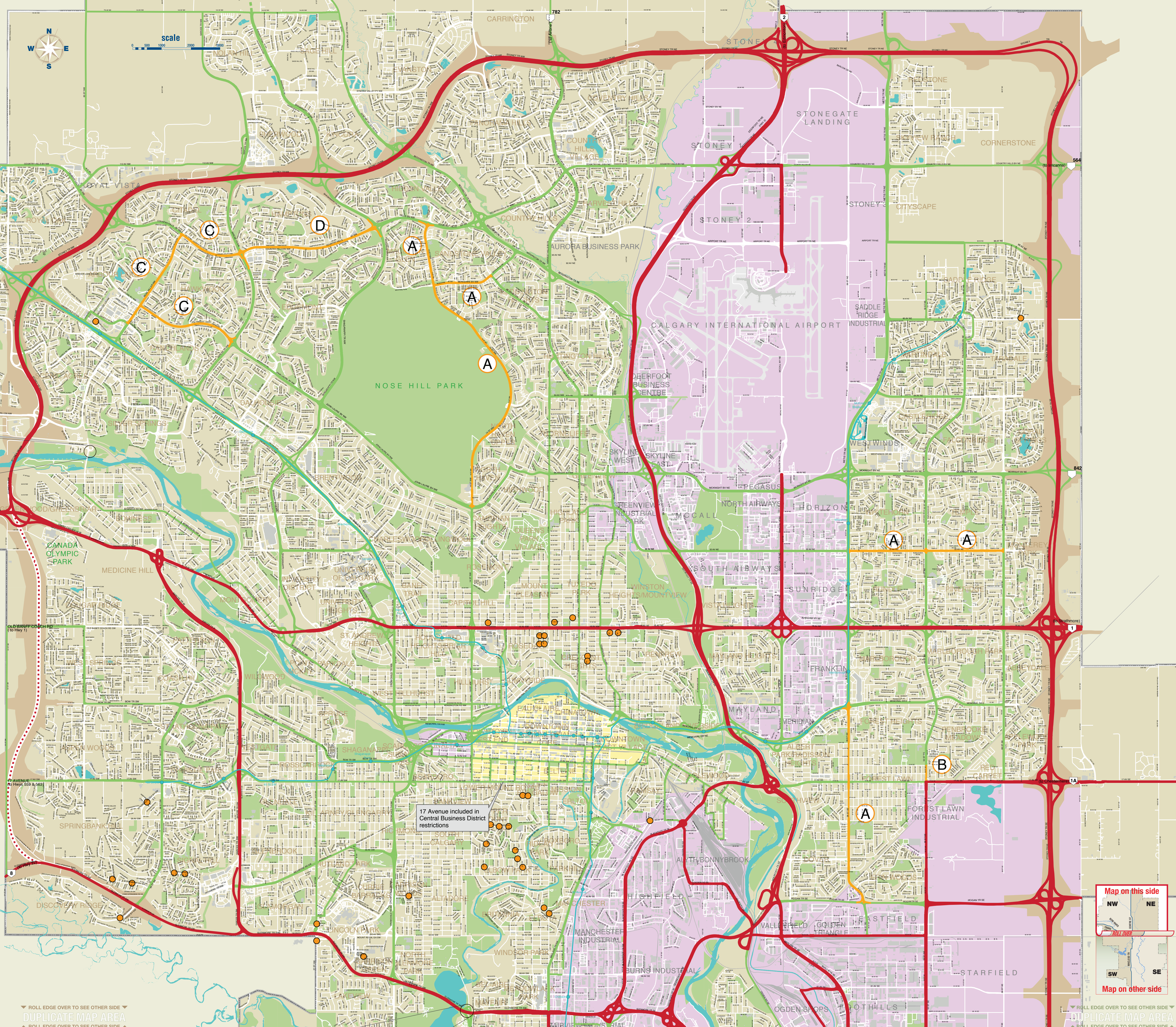
loads in excess of 5,000 kg over \$35 per 100kg plus 15% surcharge under Victims of Crime Act

Leaving the Truck Route

When it becomes necessary to leave the designated truck route for the purpose of picking up or delivering material or merchandise, supplying a service or obtaining fuel, repairs, food or accommodation, a truck driver must take the nearest truck route to the destination and directly back to the truck route again.

If a truck driver has another delivery in the immediate area, the driver may proceed directly to that delivery and then return to the nearest truck route by the most direct, accessible connection.

As professionals, truck drivers are expected to be aware of and plan their routes along current, approved truck routes.



Truck Routes

The City of Calgary designates certain roads or areas for use by trucks, and restricts certain truck routes by the times of day, such as 19:00 to 07:00, or by the number of axles. Trucks are prohibited from all other roads except where necessary to make deliveries, accept a commercial bid, repairs, food or accommodation (at commercial premises).

The City of Calgary Truck Route By-law defines a truck as:

- A truck-type vehicle with a maximum weight in excess of 4,500 kilograms.
- Any self-propelled vehicle, excluding Calgary Transit buses and school buses, with a maximum weight in excess of 4,500 kilograms.
- A tractor, grader, road building or road maintenance equipment or construction equipment (other than truck-type vehicle) regardless of weight.
- A school bus by definition, only qualifies as a school bus, as long as it is actively engaged in the transport of pupils or authorized school-related activities. Once the bus is no longer being operated in this manner & is carrying passengers or completing the trip from the school, it ceases to operate as a school bus and is therefore subject to all the restrictions otherwise placed on trucks or truck-type vehicles. As a consequence, school buses are categorized as trucks when parked unless they are parked at a school, or a school-related destination, between the hours of 8 a.m. and 5 p.m., school days.

Dangerous Goods

Vehicles transporting placardable quantities of dangerous goods are required to travel on the designated dangerous goods routes.

When it becomes necessary to leave the designated dangerous goods route for the purpose of making a delivery or supplying a service, a carrier must proceed on the designated goods route to the nearest truck route which forms the most direct, accessible connection to the destination point, and, if necessary, proceed from the truck route to the street that forms the most direct accessible connection to the destination point. The carrier must return to the designated goods route using the same street or truck route. A carrier may also leave a dangerous goods route to obtain emergency repairs or service at the nearest service station or repair depot located on or near a truck route.

Central Business District:

The transportation of dangerous goods is restricted to the Central Business District from 0600 hours to 1800 hours, Monday through Saturday.

Carriers entering the Central Business District between the hours of 0600 to 1300 and 1330 to 1800, Monday through Saturday, for the purpose of obtaining or delivering dangerous goods from or to a location within the Central Business District provided that no dangerous goods are being transported which require a placard under existing Provincial or Federal legislation. From Friday 02:00, an amendment of Bylaw 1320205.

The Central Business District is the area bounded in the north by the Bow River, in the east by the Elbow River, on the south by 17 Avenue S and on the west by 14 Street W.

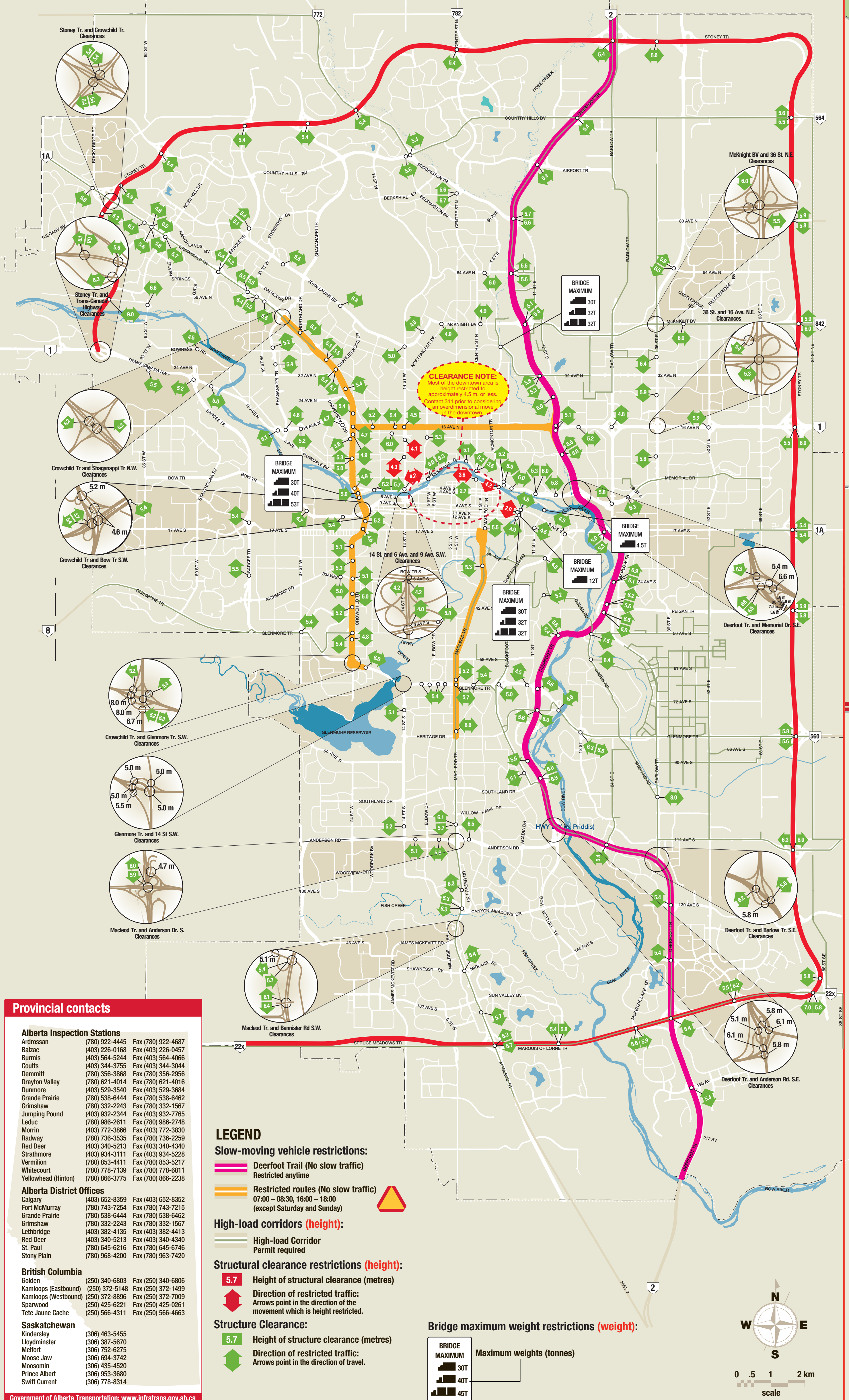
Special rules are imposed by the Fire Department Hazardous Materials Section, which can be reached at 311.

These rules, 17 Ave SW can be included as part of the Central Business District.

Other Restrictions

Carriers with class 6 dangerous goods are prohibited from using Glenmore Trail SW over the Glenmore Reservoir. For additional dangerous goods information, contact the Fire Dept. at 311.

SLOW: Slow-moving vehicles HEIGHT: Structural clearances, high-load corridors WEIGHT: Bridge maximum weights



LEGEND

- Blue line Slow-moving vehicle restrictions:
- Red line Deerfoot Trail (No slow traffic)
- Green line Restricted routes (No slow traffic) 07:00 – 08:30, 16:00 – 18:00 (except Saturday and Sunday)
- Yellow line Restricted routes (No slow traffic)

High-load corridors (height):

- High-load corridor
- Permit required

Structural clearance restrictions (height):

- Height of structural clearance (metres)
- Direction of restricted traffic: Arrow points in the direction of the movement which is height restricted.

Structural Clearance:

- Height of structure clearance (metres)
- Direction of restricted traffic: Arrow points in the direction of the movement which is height restricted.

Bridge maximum weight restrictions (weight):

- Maximum weights (tonnes)

Provincial contacts

Alberta Inspection Stations

Edmonton	(780) 445-6600 Fax (780) 922-4687
Calgary	(403) 243-0776 Fax (403) 226-0427
Stettin	(403) 244-5204 Fax (403) 244-5846
Grande Prairie	(780) 534-5254 Fax (780) 534-5254
Grande Prairie	(780) 534-5254 Fax (780) 534-5254
Grande Prairie	(780) 534-5254 Fax (780) 534-5254
Grande Prairie	(780) 534-5254 Fax (780) 534-5254
Grande Prairie	(780) 534-5254 Fax (780) 534-5254
Grande Prairie	(780) 534-5254 Fax (780) 534-5254
Grande Prairie	(780) 534-5254 Fax (780) 534-5254

Alberta District Offices

Calgary	(403) 624-8389 Fax (403) 624-8382
Edmonton	(780) 342-7254 Fax (780) 748-2724
Grande Prairie	(780) 534-6444 Fax (780) 534-6442
Grande Prairie	(780) 534-6444 Fax (780) 534-6442
Grande Prairie	(780) 534-6444 Fax (780) 534-6442
Grande Prairie	(780) 534-6444 Fax (780) 534-6442
Grande Prairie	(780) 534-6444 Fax (780) 534-6442
Grande Prairie	(780) 534-6444 Fax (780) 534-6442
Grande Prairie	(780) 534-6444 Fax (780) 534-6442
Grande Prairie	(780) 534-6444 Fax (780) 534-6442

GLENMORE CAUSEWAY NO CLASS 6 DANGEROUS GOODS

17 Avenue included in Central Business District restrictions

Weights

The maximum gross vehicle weights for particular axle and wheel configurations are established by the Alberta Provincial Government. The City of Calgary adopts these weights to minimize the damage to roadways.

Overweight and overdimensional vehicle permits are issued by Alberta Transportation at Vehicle Inspection Stations. For weight or dimension information or to obtain permits, contact Central Permits (Alberta Transportation) in Red Deer at 1-800-662-7138 (out of province call 1-403-342-7138).

Bridge maximums:

This sign indicates the maximum weight allowed for the three common truck configurations.

A City of Calgary permit may be required to move an overdimensional vehicle or load, or to cross a bridge with an overweight load. Over-dimensional permits can be obtained by calling 311. Over weight permits to cross bridges can be obtained by contacting 311.

Overdimensional loads

Vehicles with dimensions exceeding the allowable dimensions listed below require an Overdimensional permit.

Maximum height

4.15 m (13 ft 6 in) from the road surface, providing that there is a sufficient clearance under bridges or structures for the vehicle and the load to clear safely.

Most of the above clearance is height restricted to approximately 4.5 m. Prior to considering an overdimensional move, contact 311.

Maximum width

2.6 m (8 ft 6 in) measured at the widest part of the vehicle or load.

Maximum length

- 12.5 m (41 ft) for any single unit.
- 20 m (65 ft) for tractor-trailer and semi-trailer.
- 25 m (78 ft) for tractor-trailer.
- 25 m (82 ft) for TAC vehicles.

Operators of overdimensional vehicles or loads must obtain a permit before moving within the city.

Please plan your route and request your permit 24 hours in advance.

For route assistance or a permit, visit permits.ca/calgary.ca or contact 311.

For Highway #1 and Highway #2 only (loads up to 4.5 m (15 ft) high and 4.5 m (15 ft) wide)

TRAFFIC BYLAW 2616M

NO COVER OR OPERATOR SHIRT:

- (a) drive on or along a street a motor truck or other motor vehicle with or without trailer with either the door of the motor truck, the motor body filled with refuse, sand, gravel, rocks, earth or other loose material, whether similar or dissimilar to the load being transported, or
- (b) drive on or along a street a motor truck or other motor vehicle with a box or body filled with sand, gravel, rocks, earth or other loose material, whether similar or dissimilar to the load being transported, and which has not been cleaned of loose material and the load is distributed in such a manner that no portion of the material can escape upon a City street or upon land in the vicinity of a City street.

COVER YOUR BACKS

If your backside isn't covered, the fine is \$500.

Traffic Bylaw 2616M requires truck drivers to cover and secure loads of loose material. It applies to all trucks, buses and trailers carrying refuse, sand, gravel, rocks or other loose material.

All loads of loose material must be completely covered with a tarp or other type of cover. Police and bylaw officers are working with truckers and trucking companies to ensure they comply with the bylaw.

TRUCKERS MUST WEAR SEATBELTS

The penalty for using an engine retarder brake within city limits is \$250.

Engine retarder brakes

The use of all engine retarder brakes is prohibited in the City of Calgary. The sound of an engine retarder brake can be very disturbing to residents in communities close to truck routes.

Under the provisions of the Calgary Traffic Bylaw, the penalty for using an engine retarder brake within city limits is \$250.

Slow-moving vehicle restrictions

Slow-moving vehicles are prohibited on certain roadways (less than 07:00 to 08:00 and from 18:00 to 19:00, Monday through Friday). Slow-moving vehicles are prohibited on Deerfoot Trail from the north city limit to Anderson Road 24 hours a day, seven days a week. In addition to these restrictions, slow-moving vehicles may not operate at night on any street with a posted speed limit of 70 km/h or more unless the slow-moving vehicle is followed by a trail vehicle.

A slow-moving vehicle is any vehicle or equipment, any all-terrain vehicle, or any other machinery designed for use at speeds of less than 40 km/h, and which normally travels at or is used at speeds of less than 40 km/h.

Seasonal restrictions:

The government, school buses and some gravelled roads must be protected by reducing allowable axle weights in the springtime. Restricted roadways are posted with signs showing the required axle weight reduction (expressed as a percentage of the licensed axle weight). Information on spring road care can be obtained by calling 311.

Parking

No person in charge or control of any truck shall park or permit the truck to be parked on any street other than a truck route, except during such time as the truck is being used to make a delivery or in the performance of some work or service.

A moving van used to load or unload furniture from a building may park on the street in the vicinity of the building for a period not exceeding 24 hours.

No person shall park a truck on private property unless the property is zoned for this use or a Development permit has been issued permitting the use under the Land Use Bylaw 2590. No person shall park a truck on private property without the permission of the person in charge of the property.

LEGEND

- A** No trucks 19:00 – 07:00
- B** No trucks 23:00 – 07:00
- C** No trucks 19:00 – 07:00 Mon – Fri. & No Trucks All Day Saturday
- D** Maximum Three-Axle Trucks
- Orange Circles Traffic Circles
- Dangerous Goods Route
- Future Truck Route
- Future Dangerous Goods Route
- Truck Route
- Restricted Truck Route
- TUC
- Unrestricted Truck Route Area
- Major Parks
- LRT
- Central Business District
- Unrestricted Truck Route with Dangerous Goods Restrictions

Reduced Load Limit and Legal Load Limit Maximum allowable Bridge Weights

Bridge Max Weight (tonnes)	Maximum Allowable Bridge Weight (tonnes)
5.0	5.0
7.0	7.0
10.0	10.0
15.0	15.0
20.0	20.0
25.0	25.0
30.0	30.0
35.0	35.0
40.0	40.0
45.0	45.0
50.0	50.0
60.0	60.0
70.0	70.0
80.0	80.0
90.0	90.0
100.0	100.0

Contacts

- The City of Calgary, Roads Traffic Engineering Division (Overdimensional Permits) Maintenance Division (Seasonal Restrictions) Structures Division (Overweight Permits) P.O. Box 1740, Station M, Calgary, AB T2P 6M5 call 311
- 403-243-5850
- Central Truck Registry 403-250-9091
- Calgary Fire Department 403-244-2300
- Alberta Motor Transport Association (AMTA) 6508 115 St. N.E., Calgary, AB T2E 7J4 403-567-4000, Fax 403-974-0999
- Alberta Motor Transport Association (AMTA) 6101 145 Avenue N, Calgary, AB T2A 6E2 403-243-4161, Fax 403-243-4910
- Alberta Construction Trucking Association P.O. Box 4025, Station C, Calgary, AB T2T 9A3 403-244-4487, Fax 403-244-2340