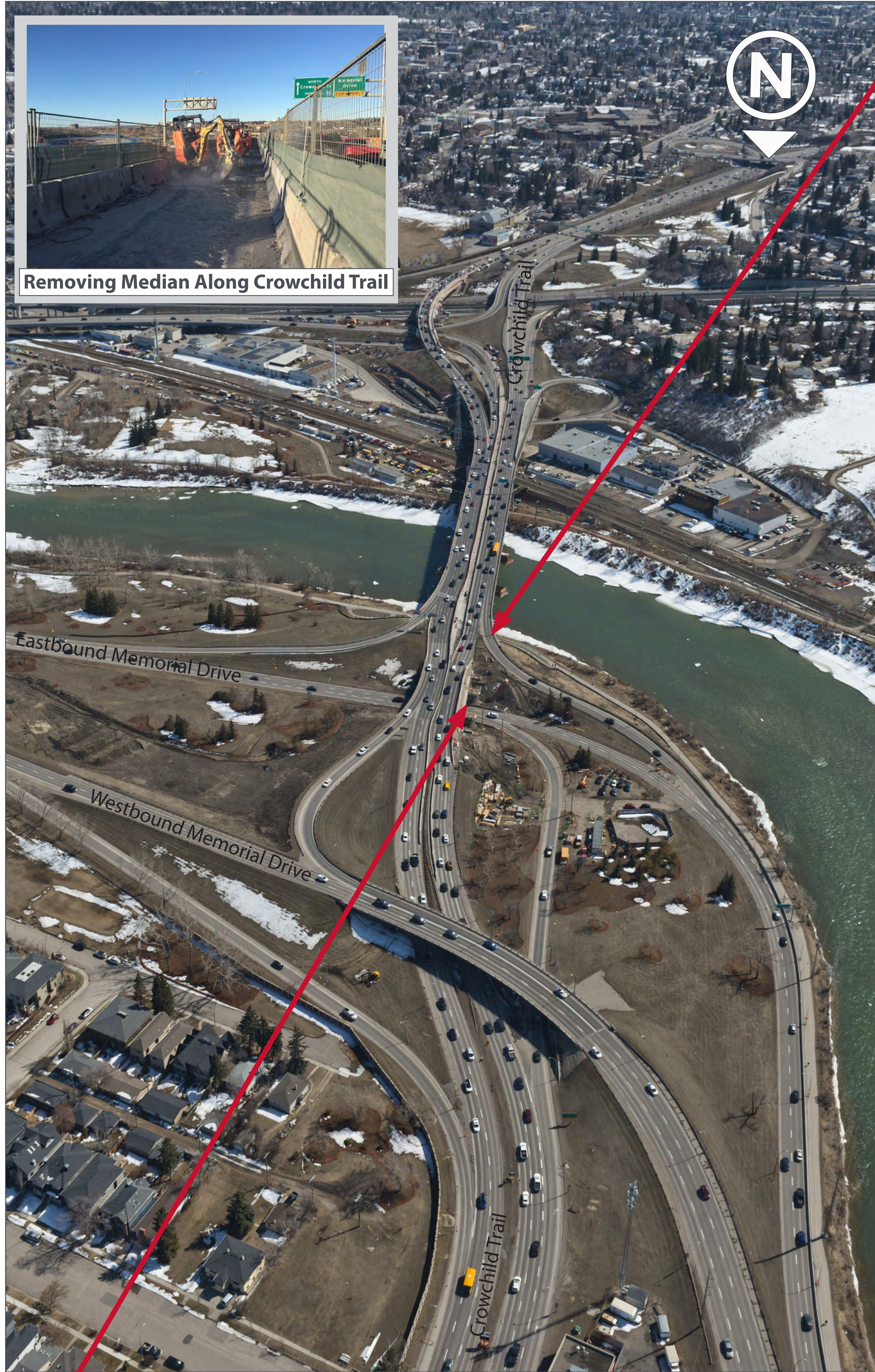


# What's Been Happening?

## Bow River Bridge Northbound to Memorial Drive



Removing Median Along Crowchild Trail



Widening and re-enforcing of the Bow River Bridge piers



Widening of the bridge over Memorial Drive

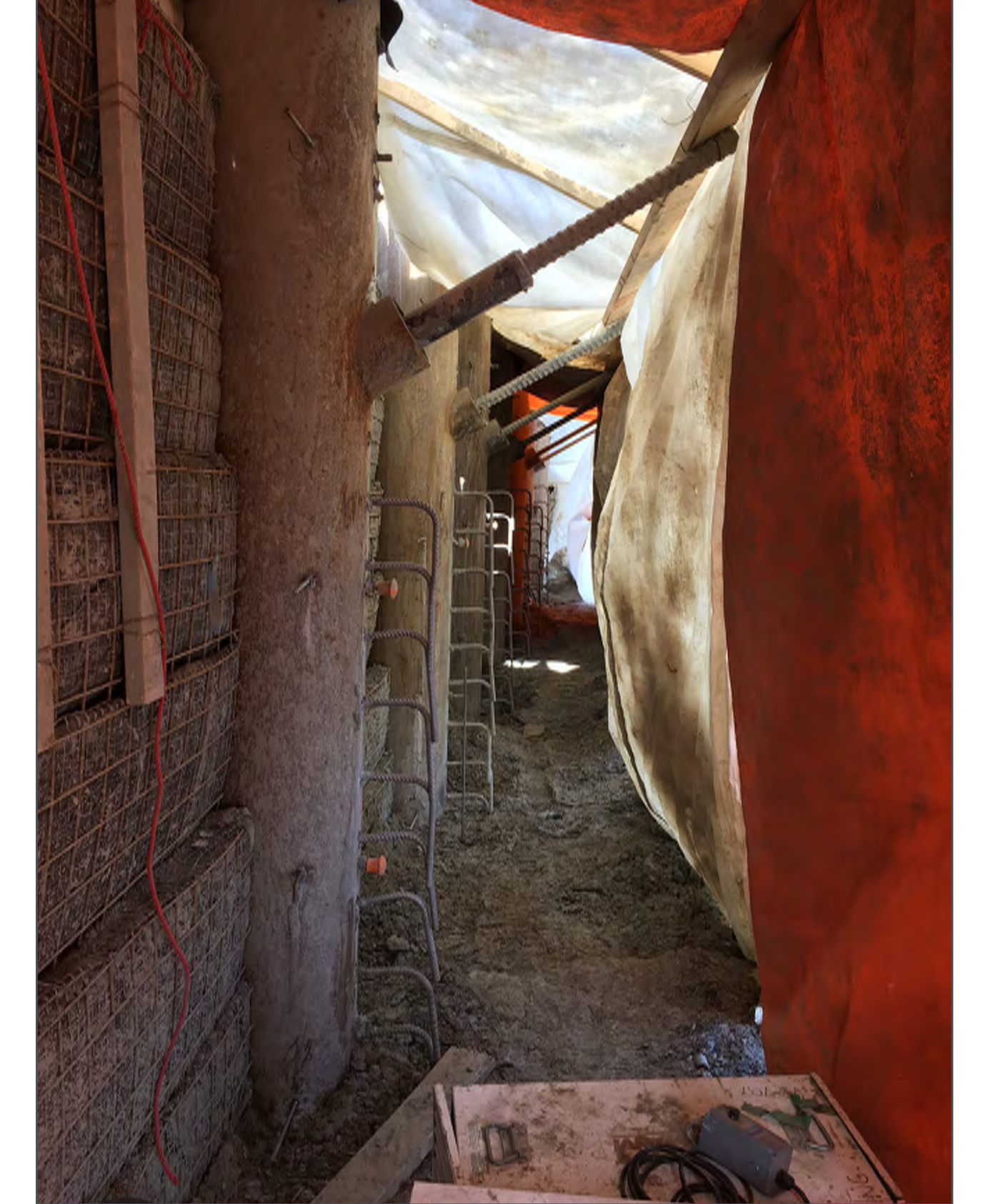


# What's Been Happening?

## Bow River Bridge Southbound to Bow Trail



Retaining wall being built for new Bow Trail and 10 Avenue S.W. on-ramps



Widening of Bow Trail Bridge, including the installation of work platforms

