

# Macleod Trail / 162 Avenue S Interchange

# Background Information

The City of Calgary plans to upgrade the existing Macleod Trail and 162 Ave S intersection to an interchange to *improve the experience* for all travel modes.

## Study Goals:

- Accommodate policy goals of the Calgary Transportation Plan.
- Integrate stakeholder input to the extent possible.
- Develop a cost-effective plan that accommodates all modes of travel.

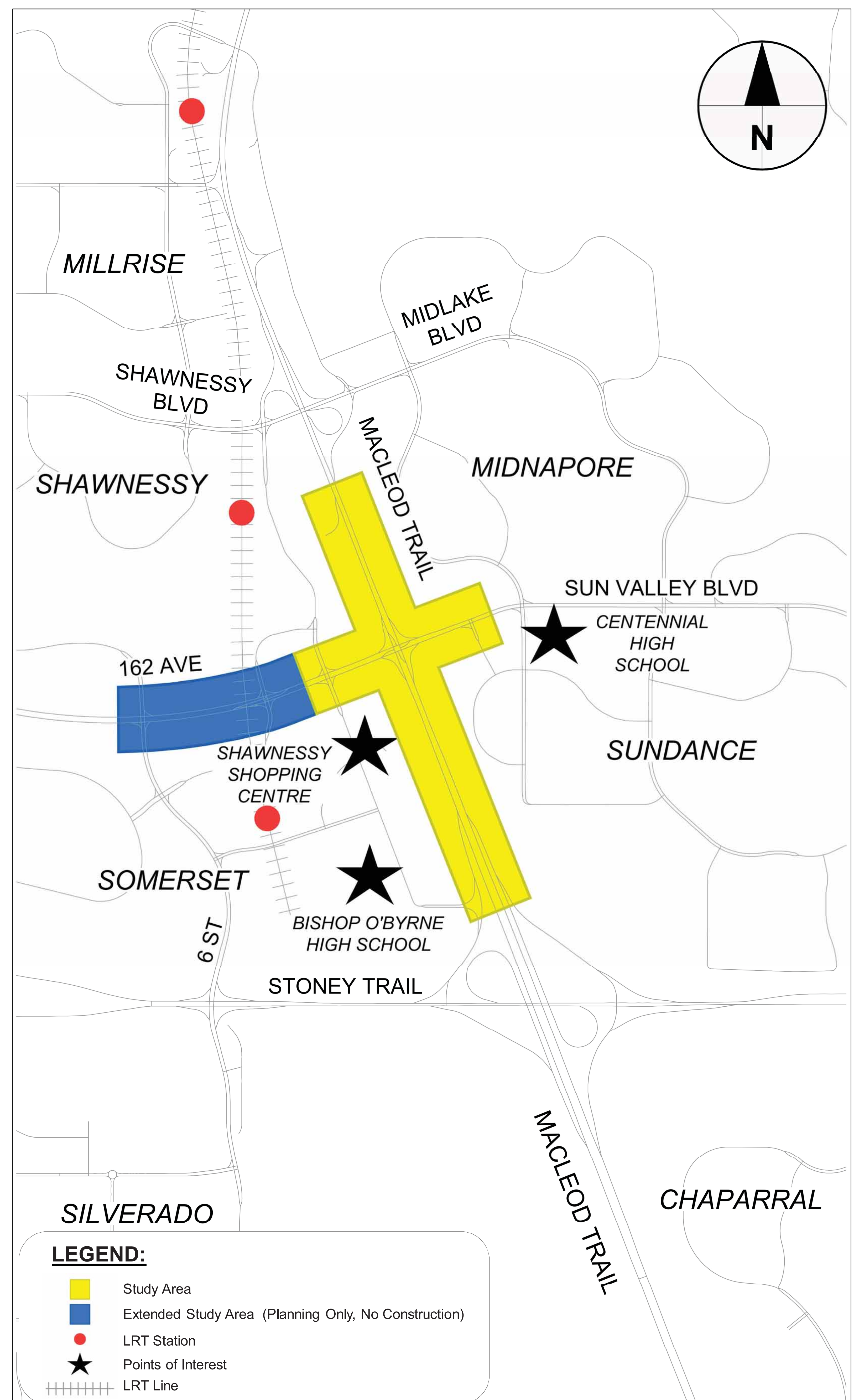
## Previous Information Sessions:

- In October 2014, an Information Session was held to introduce the project.
- In February 2015, an Information Session was held to present and obtain input on the short-listed options

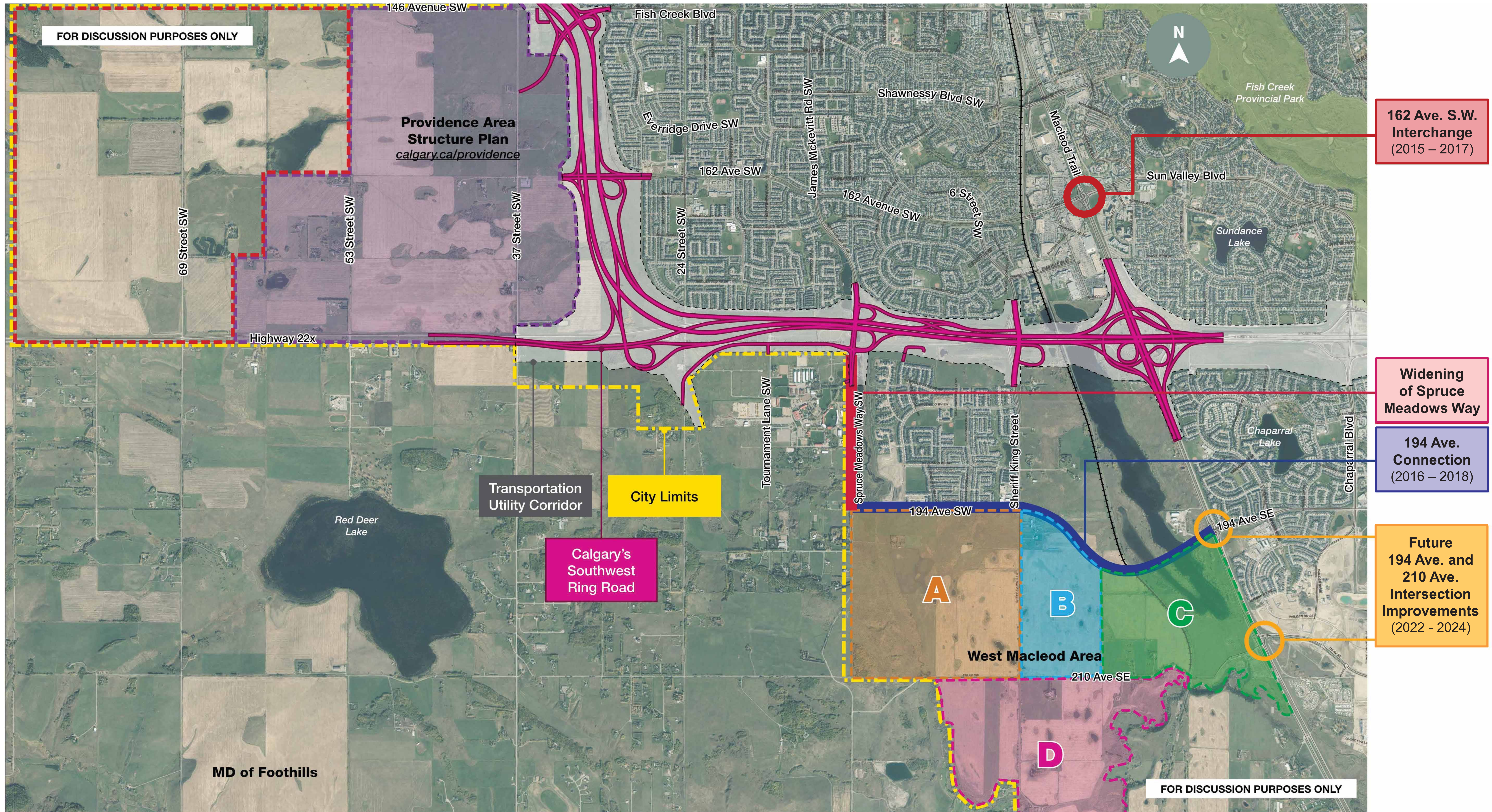
## June 2015 Information Session:

- Share recommended interchange plan
- Provide information about the upcoming construction plans.

## Location Plan and Key Community Features



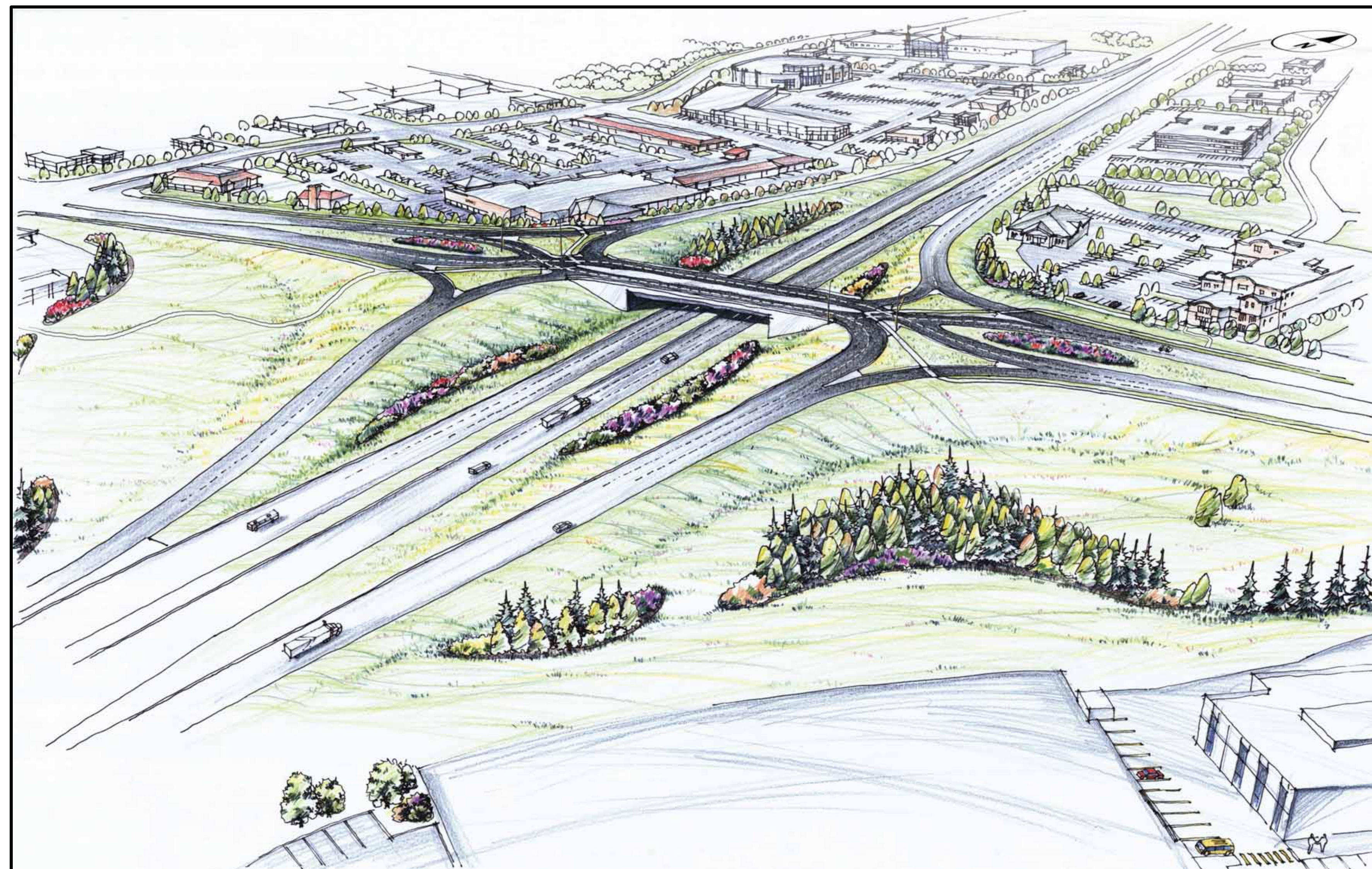
# Regional Context



# What you Said: Interchange Configurations

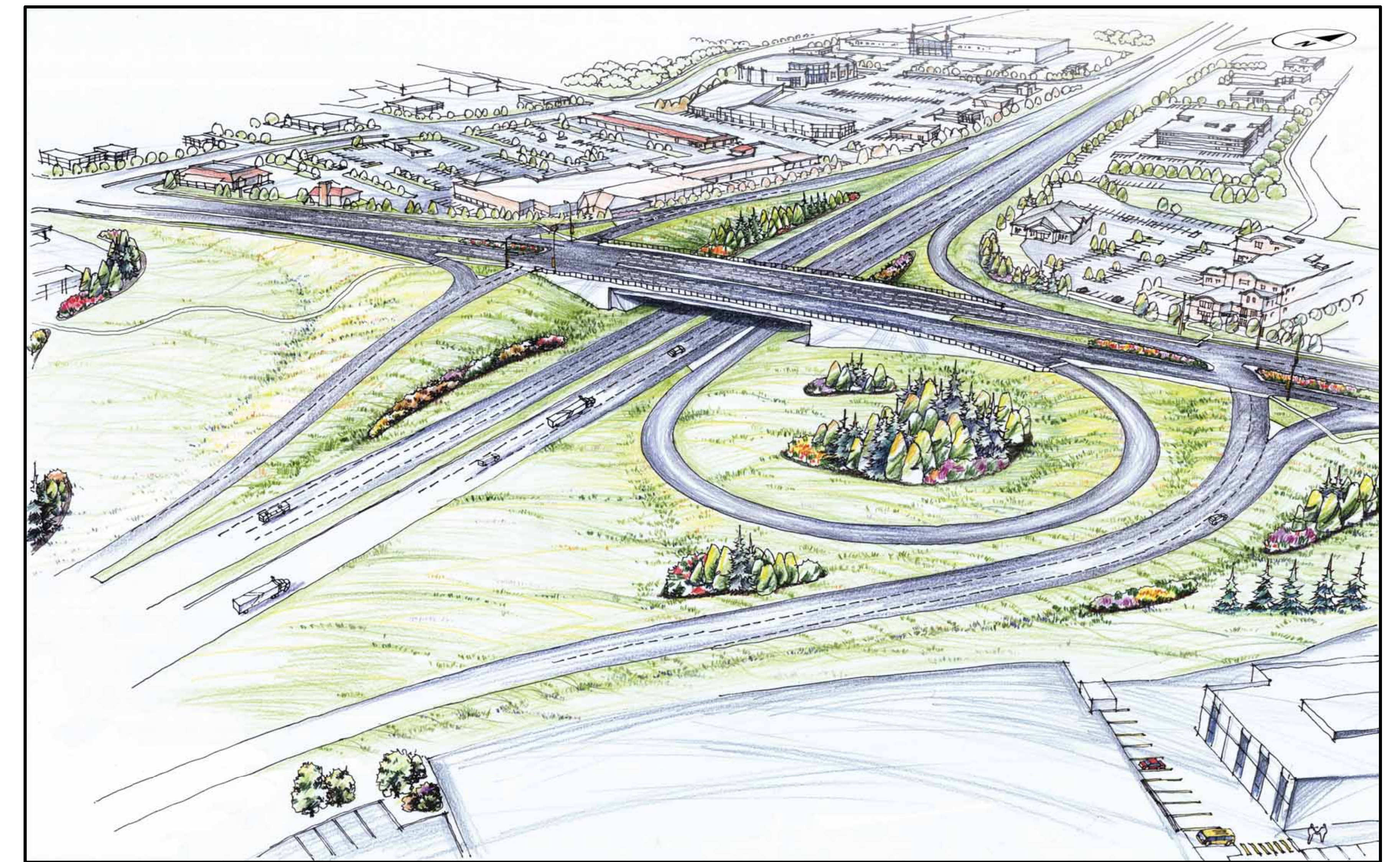
At the previous Information Session, two short-listed interchange configurations were presented. Your comments included:

## Diverging Diamond Interchange (DDI)



- Most people preferred this interchange configuration
- Enhanced mobility for pedestrians and cyclists
- Information on how to use a DDI will be important

## Partial Clover Leaf (Parclo A)

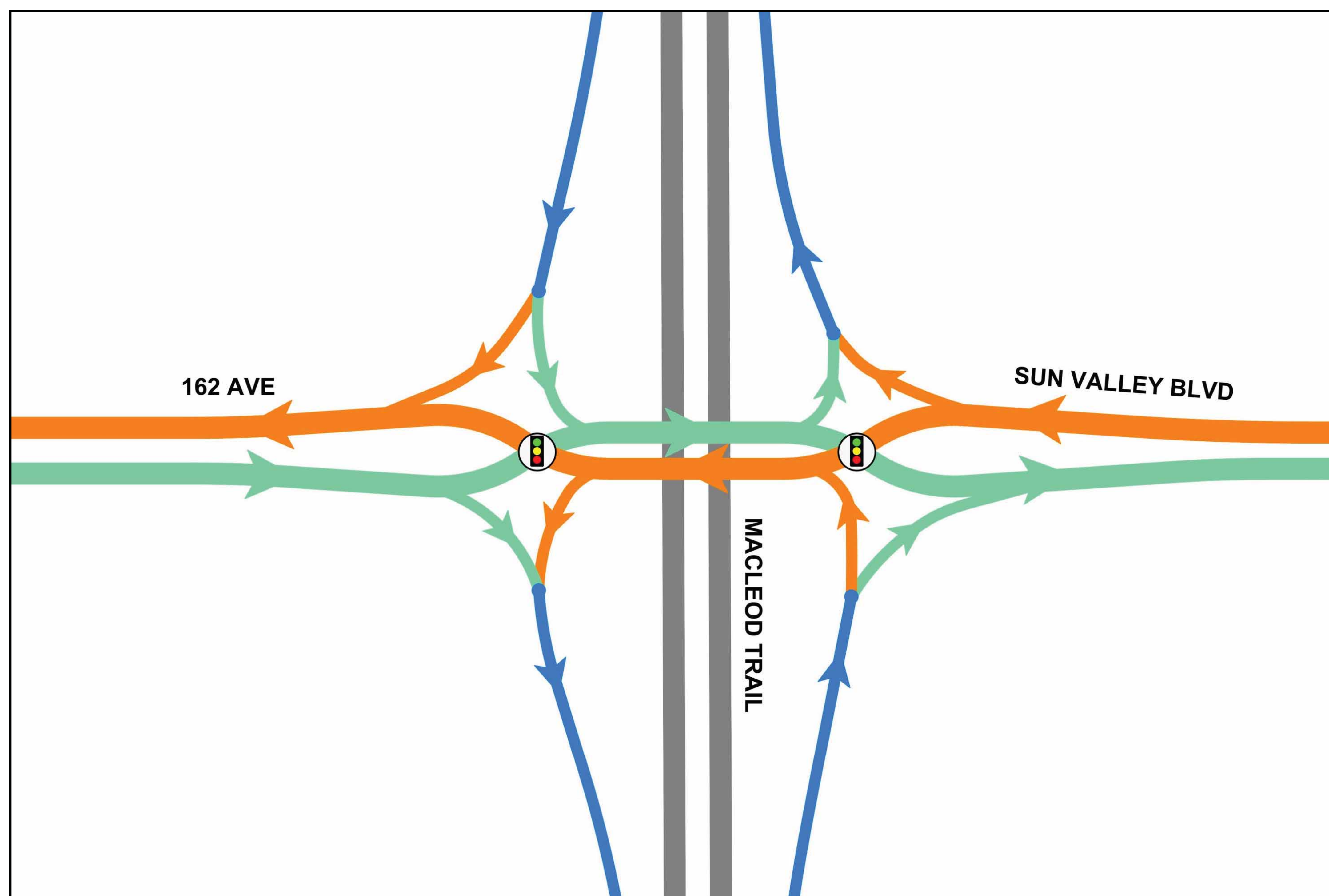


- Parclo A is familiar to Calgarians
- Liked loops for free flow movement
- Partial clover leaf at Shawnessy Blvd / Midlake Blvd not efficient with short merge

# Interchange Evaluation

Following the previous Information Session, further analysis was completed. Upon evaluation, the DDI was selected by The City. Reasons include:

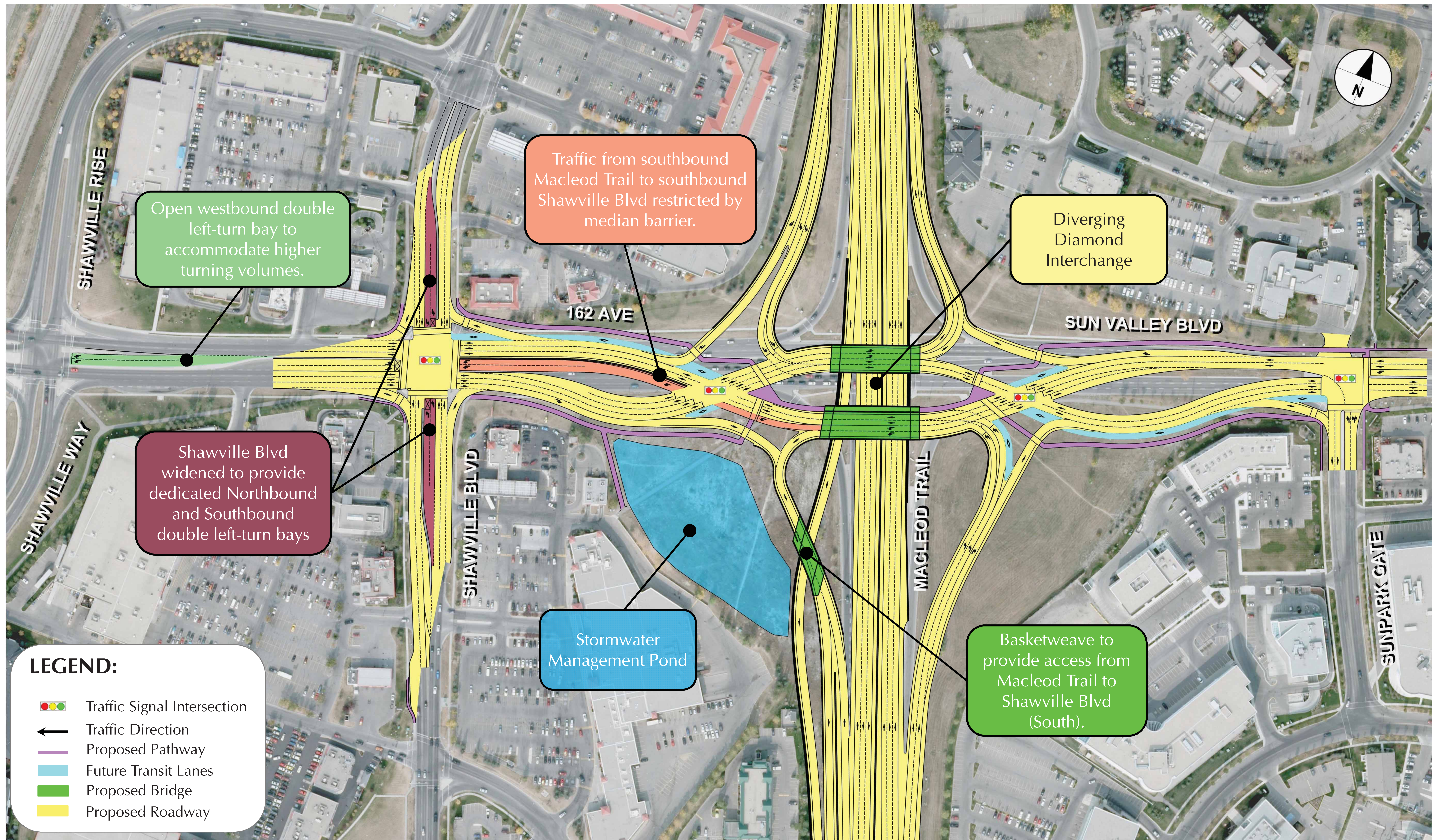
- Public supported this new interchange configuration.
- Public supported the enhanced mobility of pedestrians and cyclists provided by the DDI.
- Free-flow left-turn movements from 162 Avenue to Macleod Trail accommodates high volume movements.
- Simplified traffic signal operations as no left-turn arrow phases are needed (more efficient operations and less delay).
- The DDI configuration allows for better transit service.
- Allows for earlier construction start.



# Macleod Trail / 162 Avenue Interchange Recommended Plan



# Macleod Trail/162 Avenue Recommended Plan



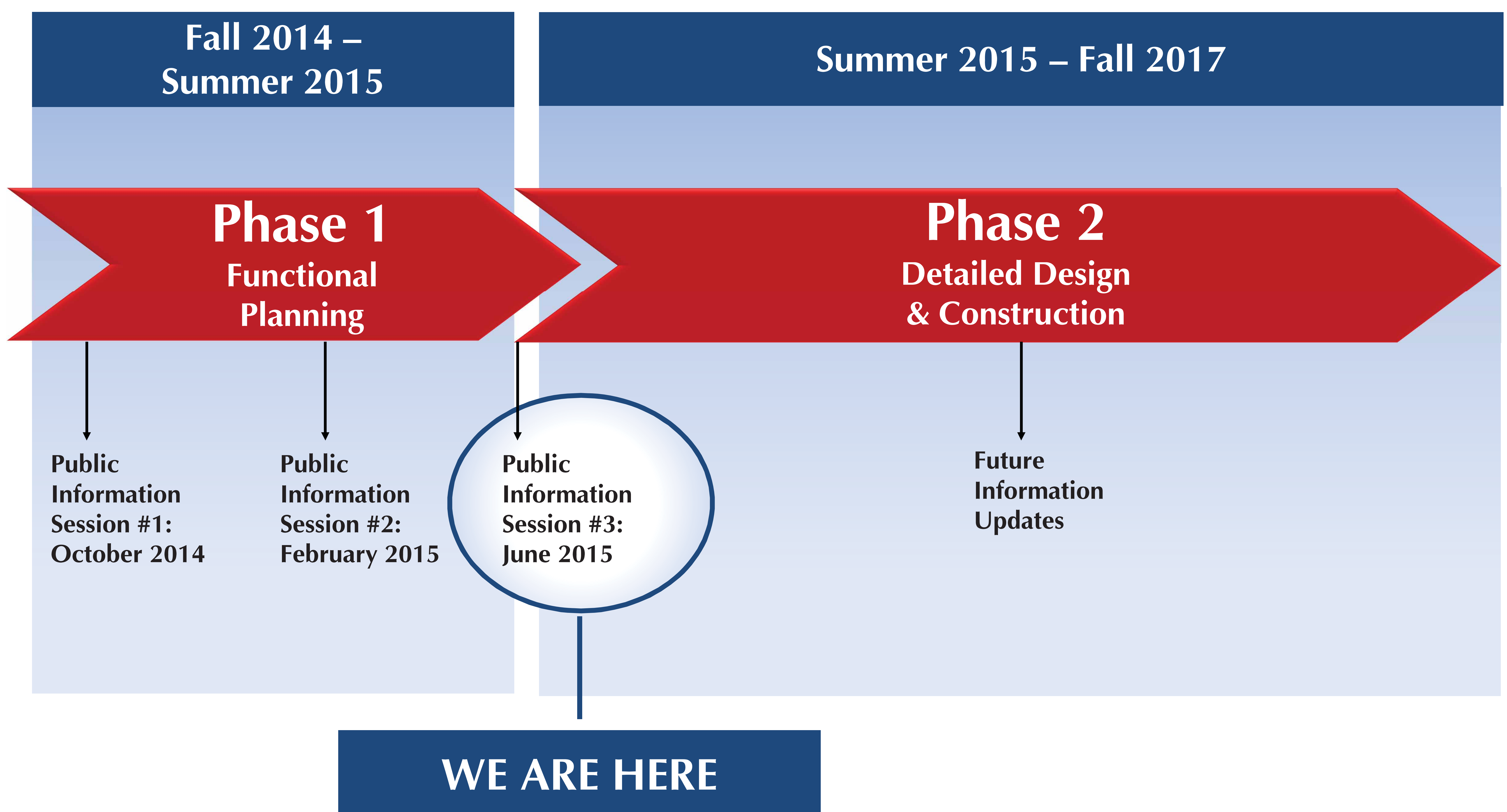
# Moving Forward

## Next Steps:

### The City will:

- Finalize the Functional Planning Study
- Begin detour construction summer 2015
- Begin bridge construction late 2015
- Update the public on future detour stages in 2016 and 2017

## Project Schedule:



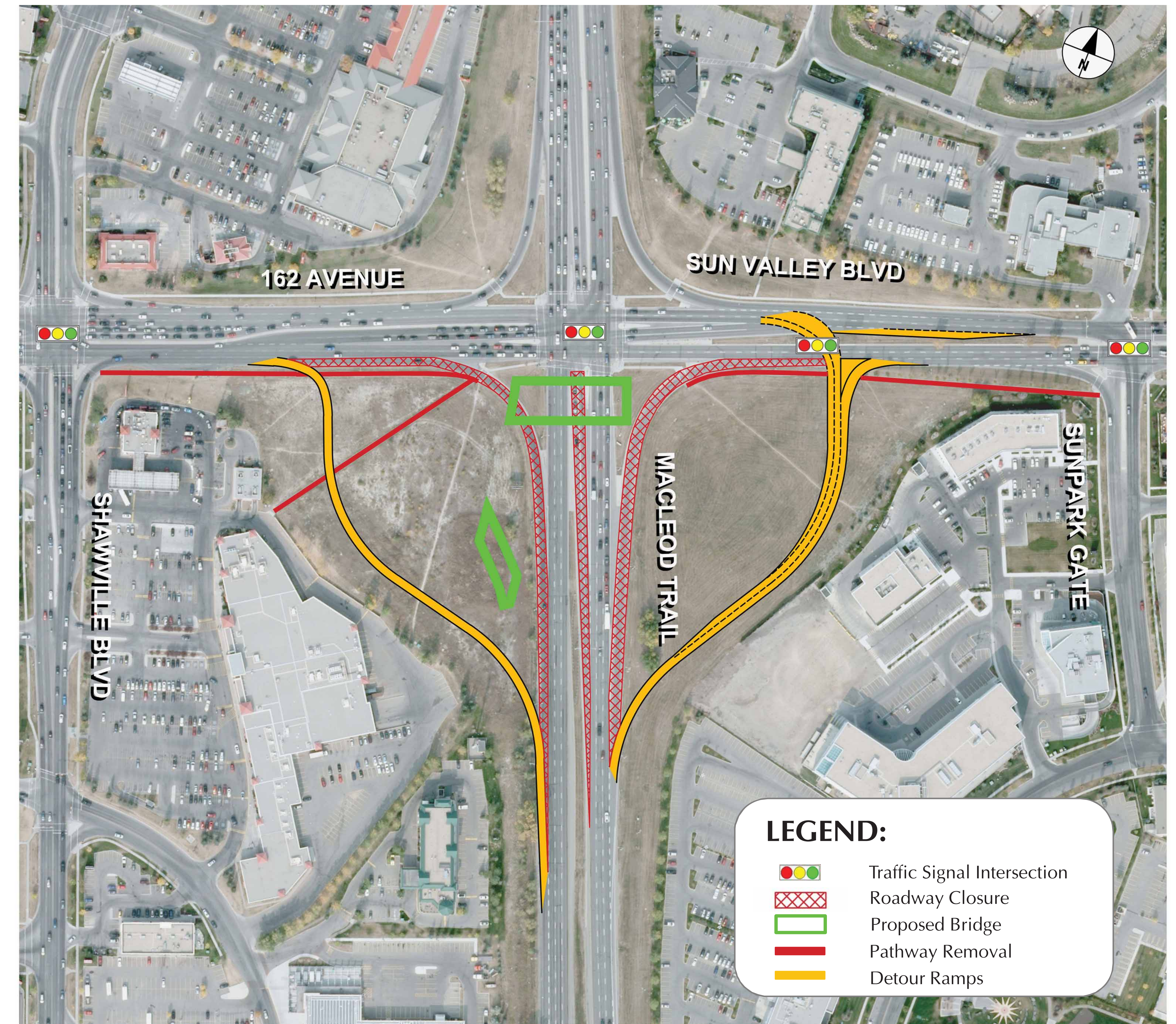


# Detour Construction – Phase 1

Construction of the Macleod Trail / 162 Avenue interchange will begin this summer. The Phase 1 detour will allow bridge construction to begin in late 2015.

Activities will include:

- Construction of detour ramps to replace three of the turning lanes at Macleod Trail
- A new temporary traffic signal on Sun Valley Blvd to allow left-turn traffic on to 162 Avenue from northbound Macleod Trail
- Site preparation for the main interchange project (including tree removal)
- Removal of south sidewalk and pathway between Shawville Blvd and Sunpark Gate



## Future Detour Phases:

The City will provide information on future detour phases as it is developed in 2016 and 2017.

# THANK YOU

Thank you for participating in this  
Public Information Session for

Macleod Trail / 162 Avenue S  
Interchange  
and

Macleod Trail / 194 Avenue S –  
West Connection

Please take some time today to  
complete a comment sheet before you leave today.

[www.calgary.ca/Macleod162Ave](http://www.calgary.ca/Macleod162Ave) [www.calgary.ca/Macleod194Ave](http://www.calgary.ca/Macleod194Ave)

