

October 11, 2019

## **INFORMATION**   **Construction in Ramsay** **NOTICE**   **Construction Update – October 2019**

In preparation for the Green Line LRT, The City will be completing several Enabling Works construction projects along the future Green Line alignment. These projects include utility relocations and land preparation. Doing this work now ensures the right-of-way will be ready for major Green Line construction scheduled to start in 2020.

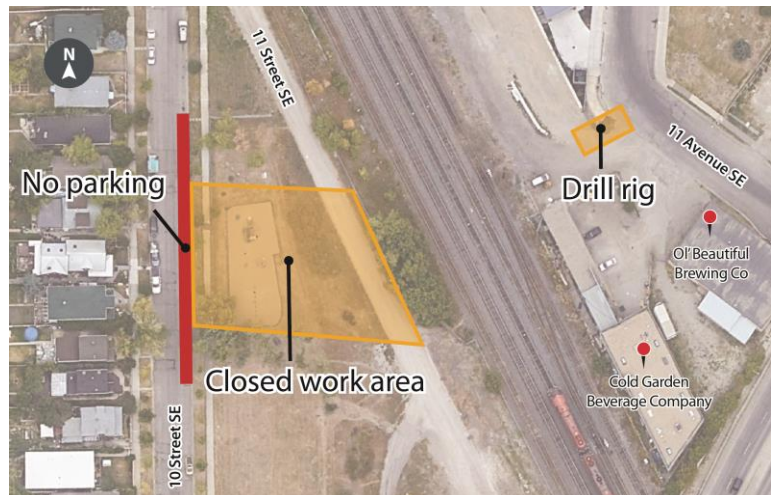
### **GREEN LINE UTILITY RELOCATIONS**

#### **What work is about to start in your neighbourhood?**

TELUS crews will be returning to Jefferies Park in early October to relocate telecommunications utilities in the park and beneath the CP railway.

The work will be completed in two phases:

- **Phase 1** will include deep excavation, drilling beneath the CP railway (similar to the recent water main work) and construction will occur on both the east and west side of the CP railway tracks and within the boundaries of Jefferies Park. This phase is expected to take up to two months and be complete by end of December 2019.
- **Phase 2** will include cable placing and splicing and will be more localized work around the manholes on 10 Street S.E. and 17 Ave. This phase includes landscaping, with Jefferies Park being returned to a green space Spring 2020.



#### **What to Expect**

It is anticipated that crews will be working Monday to Friday, from approximately 7 a.m. to 7 p.m. along City-owned roadways and boulevards. During construction hours you can expect:

- General construction noise and vibration (trucks, excavation equipment)
- Increased construction traffic in the neighbourhood
- On street parking will be removed on the east side of 10 Street S.E. while this work is being completed.

Detours will be in place for vehicles, pedestrians and cyclists as required.

## **What work has already been completed in your neighbourhood?**

Adelaide Street:

- Relocation of City Fibre Optics and ATCO gas line is complete
- Adelaide Street has been permanently closed to accommodate the future LRT tracks

11 Avenue S.E. and 10 Street S.E. and Jefferies Park:

- A new watermain has been installed through Jefferies Park and the roadway has been realigned at 11 Avenue S.E. and 10 Street S.E.
- Playground structure has been permanently removed and Jefferies Park has been returned to a green space.

Artpoint Gallery and 11 Street S.E.:

- Construction of new access driveway off 17 Avenue S.E. is complete
- 11 Street S.E. has been permanently closed to accommodate the future LRT tracks.

11 Street S.E. and 17 Avenue S.E.:

- Relocation of Atco gas line is complete

## **MORE INFORMATION**

For more information about the Green Line project, please visit [Calgary.ca/GreenLine](https://calgary.ca/GreenLine) or call 311.