

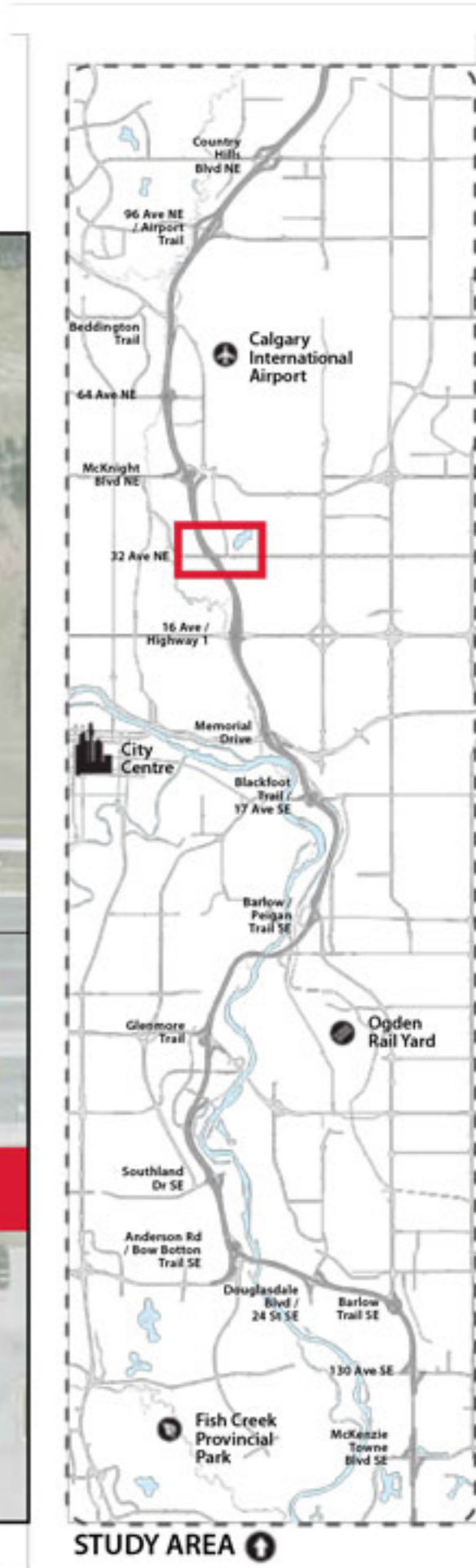
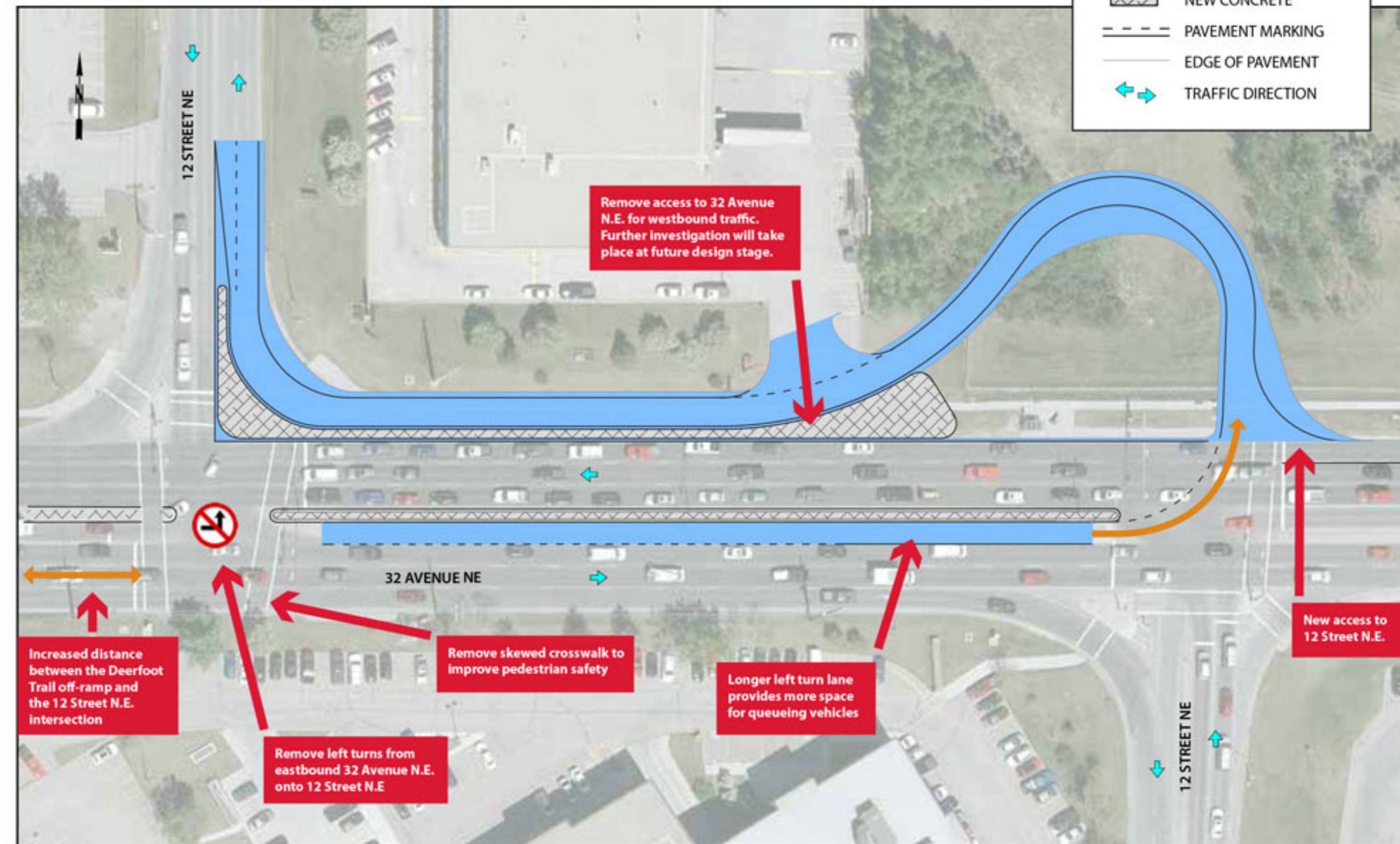
Deerfoot Trail Study Short-term recommendations

'Jughandle' intersection at 32 Ave. and 12 St. N.E.

- ✓ Improves safety by providing more space and time to merge across 32 Avenue N.E. to make a northbound turn onto 12 Street N.E.
- ✓ Removes the left-turn signal phase on eastbound 32 Avenue N.E. at 12 Street N.E., providing more green light time for other traffic and relieving congestion
- ✓ Reduces congestion and improves travel times
- ✓ Simplifies pedestrian crossings to improve safety
- ✗ The new access to 12 Street N.E. via the 'jughandle' is not intuitive
- ✗ Requires land from McCall Lake Golf Course

Please note: This plan is no long valid

Short-term Recommendation



Existing Conditions

