

Welcome to the Northmount Drive N.W. Improvement Project information session

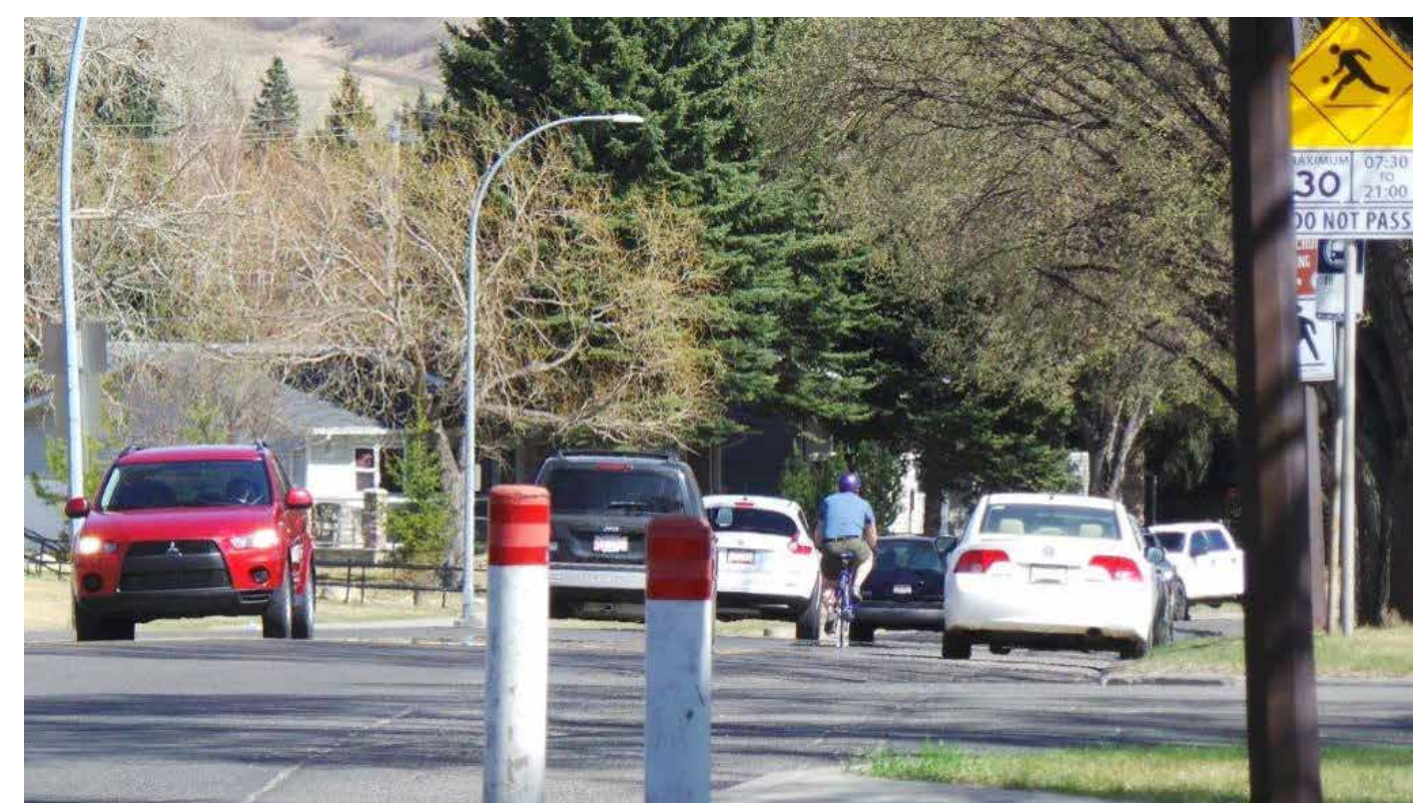
Thank you for coming!

Please come in and have a look at the information boards.
The project team will be happy to answer your questions.

What is the purpose of today's information session?

To share project updates with the public including:

- Project phasing
- Updated Phase 1 design
- Construction timelines
- Project alignment with 14 Street N.W. surface overlay

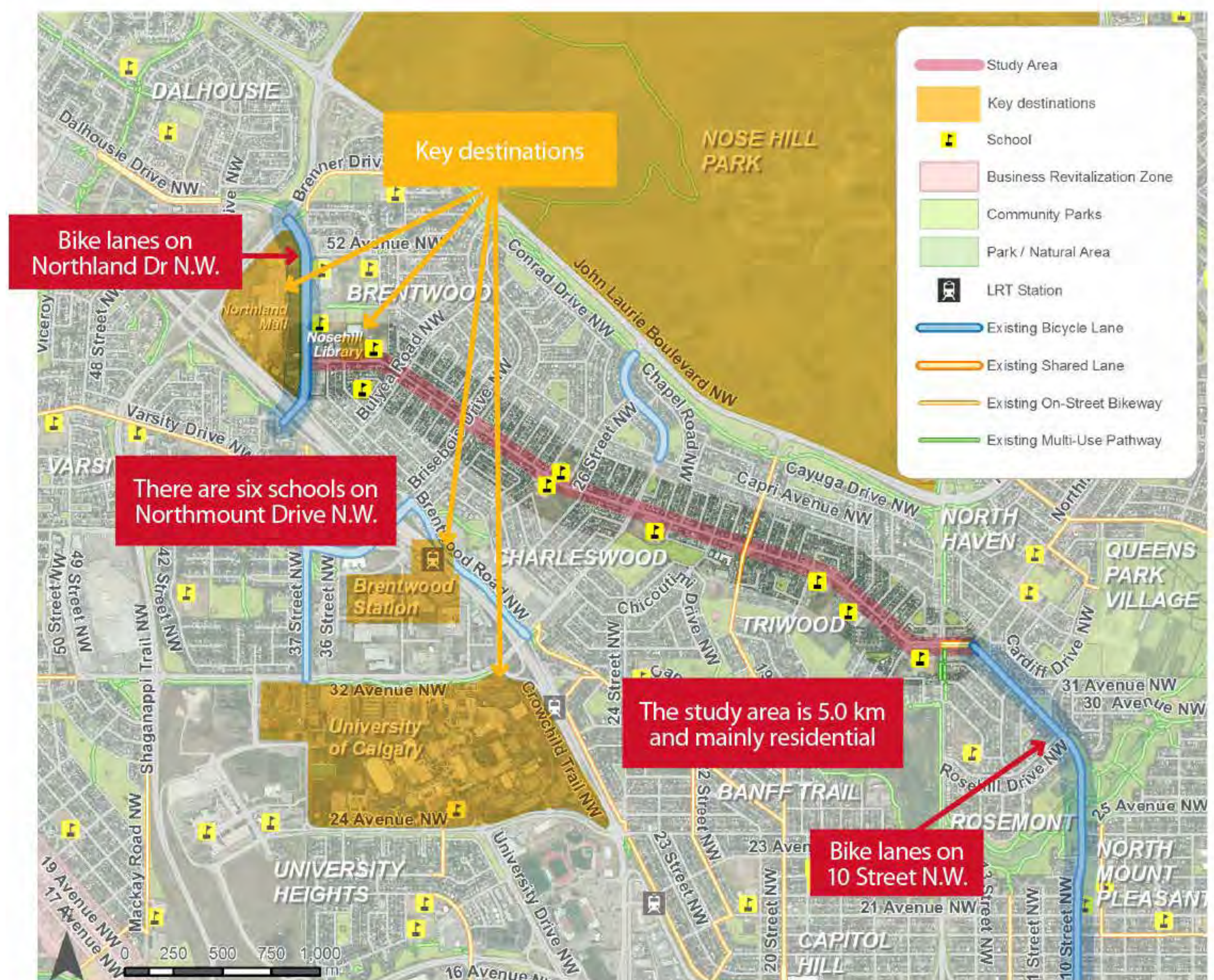


Northmount Drive N.W. Improvement Project

This project will consider ways to improve traffic flow, pedestrian crossings and school zones, as well as accommodate bicycles.

The City aims to improve Calgary overall by:

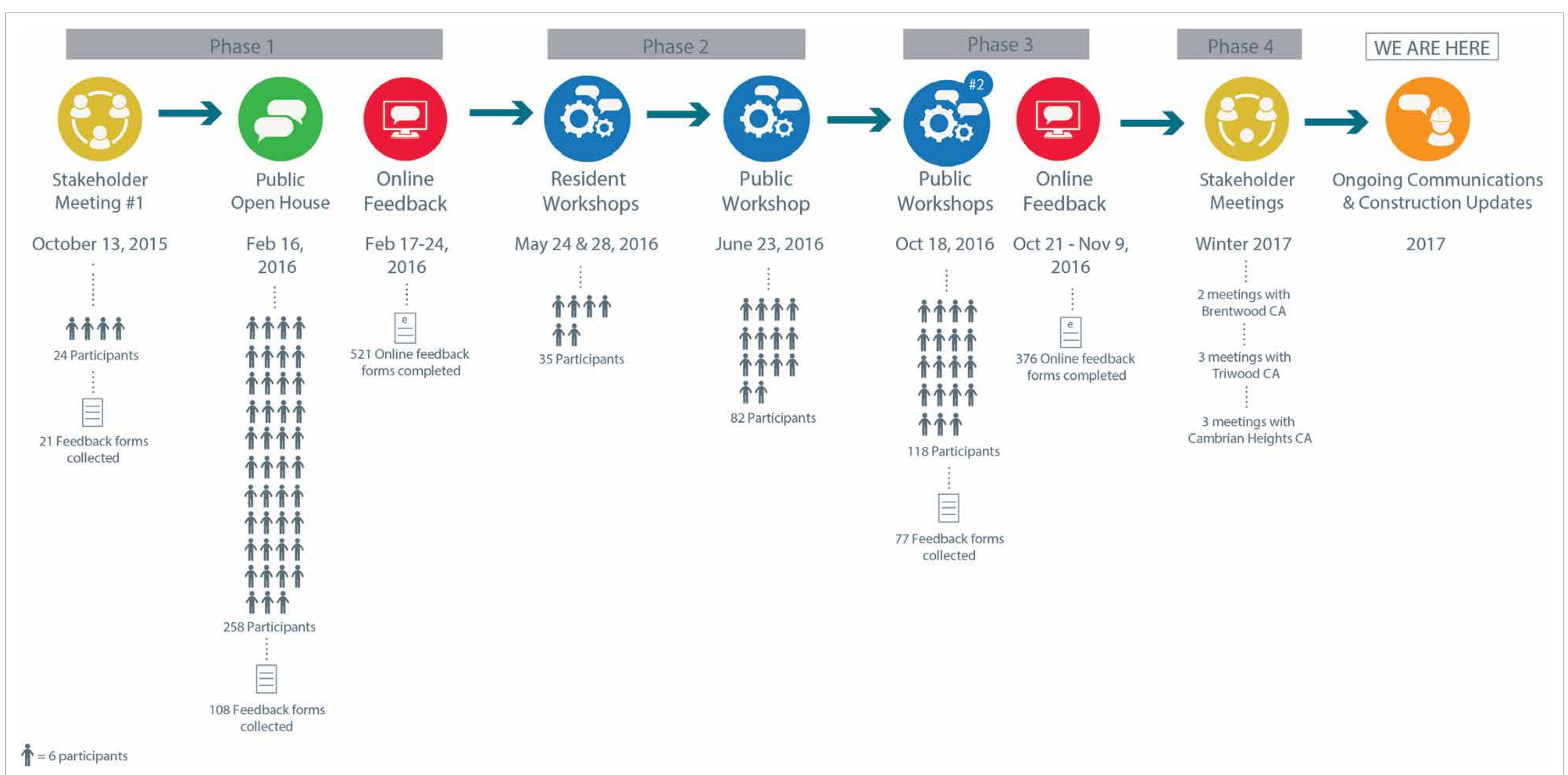
- Planning for growth
- Providing and connecting transportation choices
- Creating vibrant, healthy communities
- Improving safety for all road users



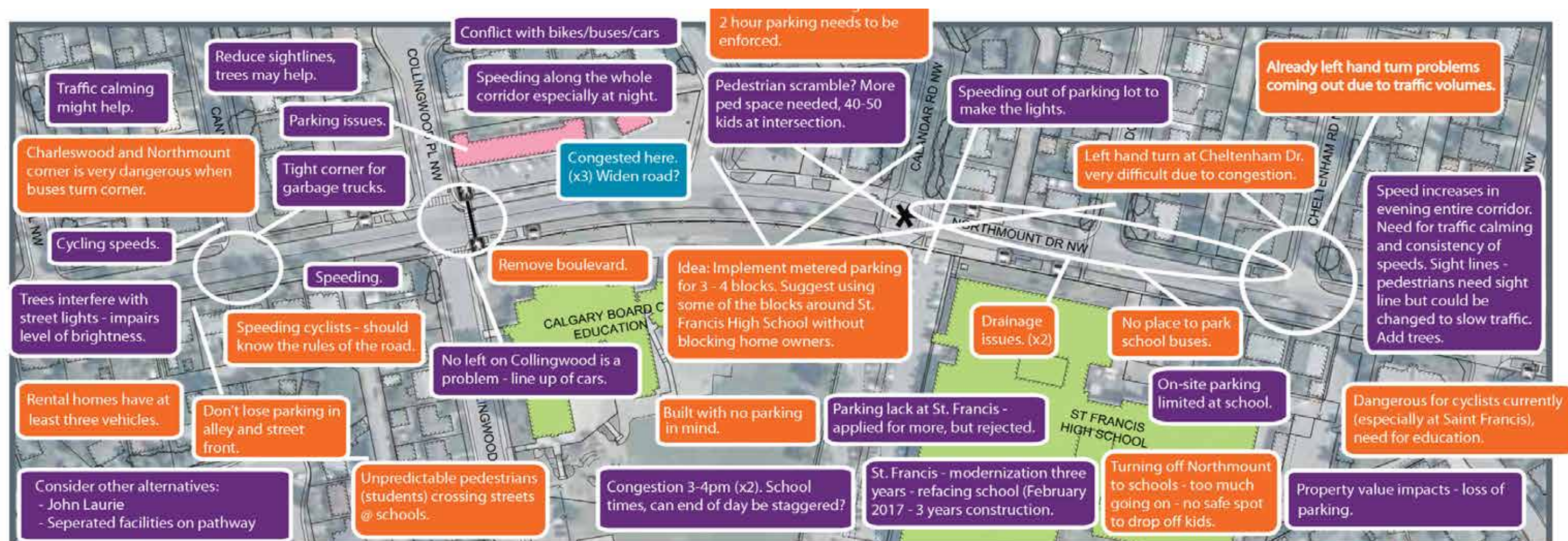
Project background

Since 2015, The City has been working with people who live, work and travel along Northmount Drive N.W. to develop a Complete Street improvement plan from Northland Drive N.W. to Cambrian Drive N.W.

Throughout the year-long engagement process, over 500 people attended the engagement events and over 1,000 in-person and online feedback forms were collected.



Throughout this engagement, The City heard that issues of **speeding, pedestrian safety, congestion and school site safety** are long-standing concerns along the corridor.



Project update



After the fall 2016 workshops, The City worked with the community and stakeholders to develop a design to better address the concerns that were heard about the corridor.



The final design for Northmount Drive N.W. addresses community and stakeholder concerns with a focus on:

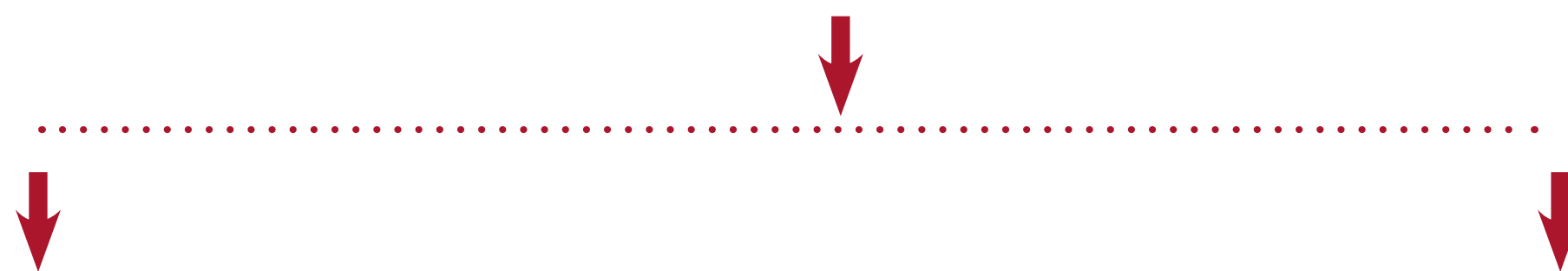
- Maintaining current vehicle flow while increasing turn capacity
- Retaining as much parking along the corridor as possible (approximately two-thirds)

The City conducted two parking studies and found that the peak parking demand did not exceed 50 per cent of the total available parking supply

- Enhancing pedestrian crossings with curb extensions
- Creating narrower travel lanes to reduce speeding
- Creating dedicated spaces for people cycling and buses



With increased scope and costs for a design that better reflects the community's wants, The City will phase construction on Northmount Drive N.W. starting with **pedestrian improvements** along the corridor and **operational improvements at the 14 Street N.W. intersection.**



Phase 1:

- 14 Street N.W. safety and operational improvements for all travel modes
- New pavement between Cambrian Drive N.W. and Carol Drive N.W.
- Pedestrian improvements along Northmount Drive N.W. including locations in front of schools
- Bicycle connection through Northmount Drive and 14 Street N.W. intersection for improved safety and future connectivity

**Construction to begin this summer*



Phase 2:

- Bicycle lanes along Northmount Drive N.W. to improve safety for people cycling
- Intersection improvements at Northland Drive N.W., Brisebois Drive N.W., Charleswood Drive N.W. and 19 Street N.W.
- School-site improvements at Captain John Palliser School, Saint Francis School and Brentwood School
- Phase 1 low-cost curb extensions will be poured with concrete

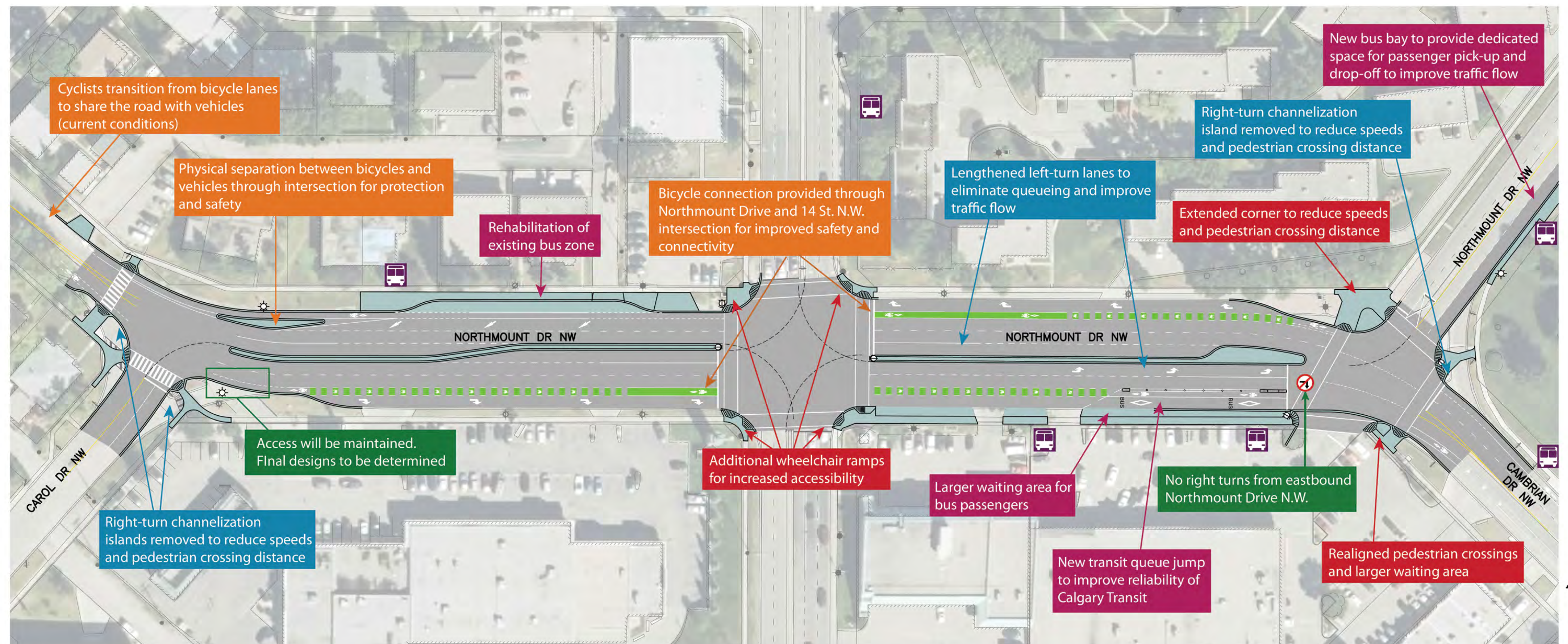
**Phase 2 will be constructed as funding becomes available*

Northmount Drive N.W. Final Design



- | | |
|---|--|
| Intersection improvements | Bicycle facilities |
| School-site improvements | Transit improvements |
| Pedestrian improvements | Parking impacts |

Phase 1: 14 Street N.W. Intersection Final Design



- | | | | | | | | |
|---|--------------|---|---------------------------|---|----------------------|---|---------------------|
|  | New concrete |  | Bicycle facilities |  | Transit improvements |  | Bus route number |
|  | New asphalt |  | Intersection improvements |  | Access modifications |  | Bus stop |
| | |  | Pedestrian improvements | | |  | Bus route direction |



Phase 1: Pedestrian and school-site safety improvements

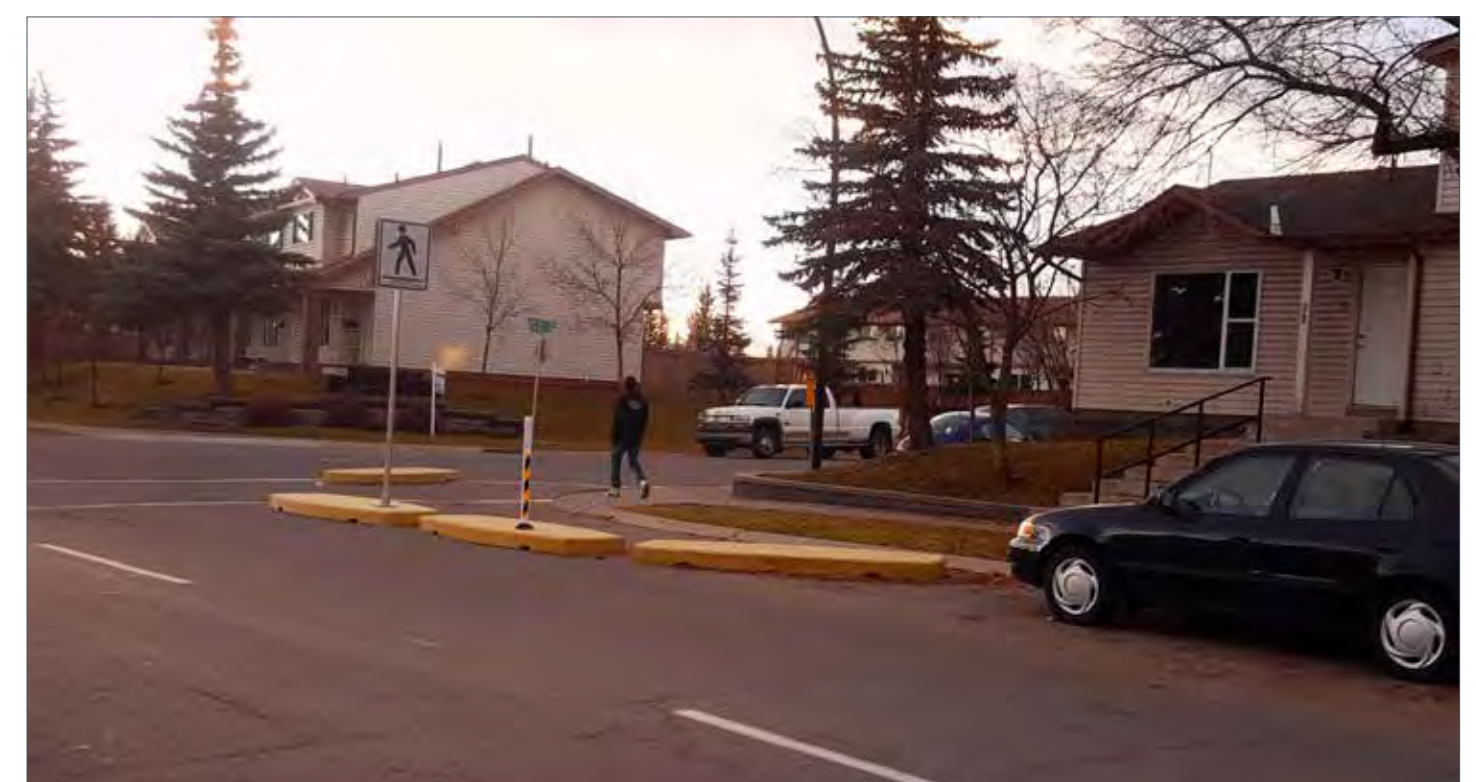
Phase 1 will include the addition of 10 low-cost curb extensions along the corridor to improve pedestrian safety by:

- Reducing crossing distances
- Improving visibility by defining the space between parked cars and intersection crossings
- Providing a safe space to wait before crossing the street
- Narrowing the street, which reduces vehicle speeds and increases safety for people walking and biking in the community

The curb extensions will be poured with concrete in Phase 2 when funding becomes available.



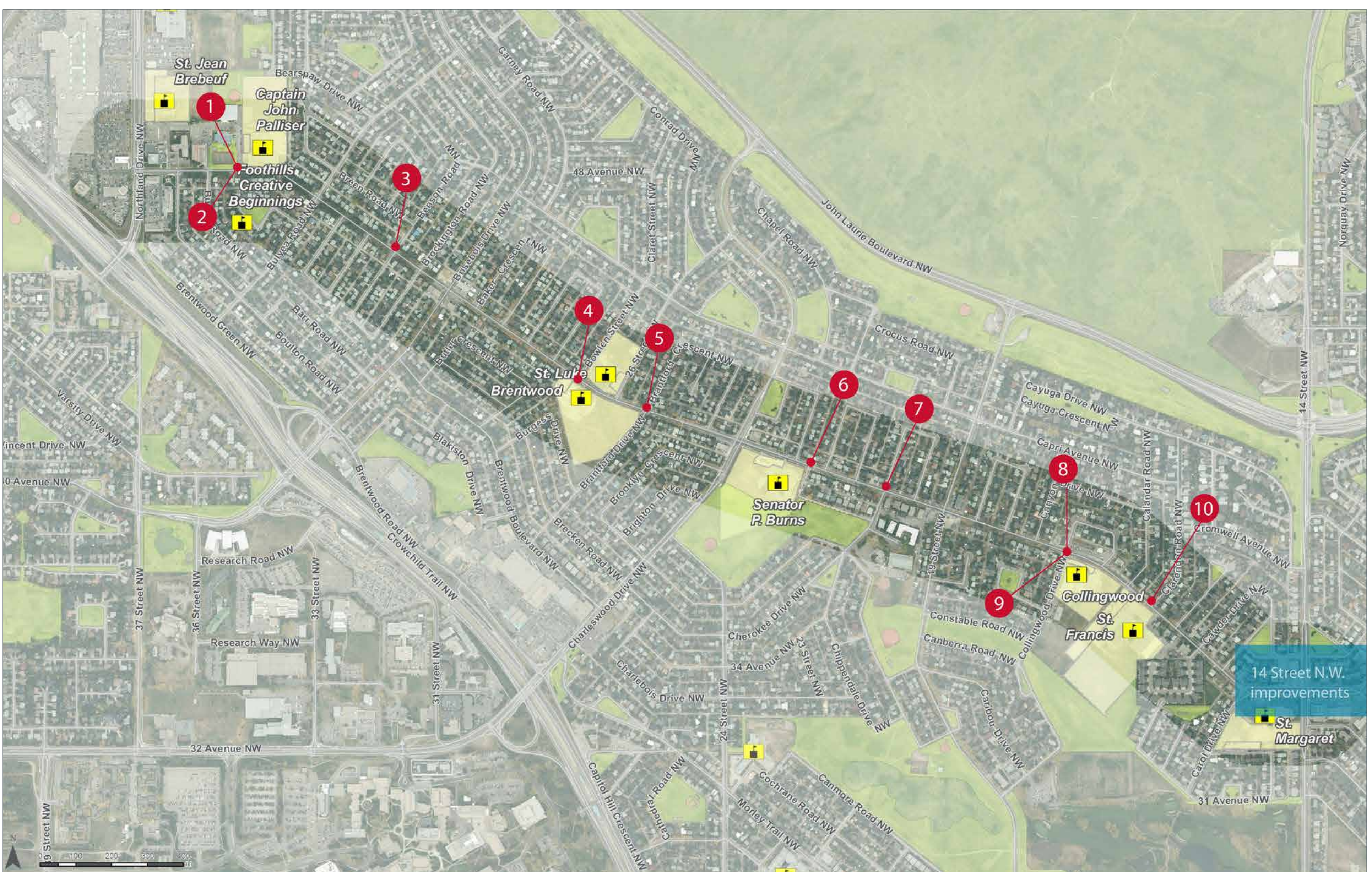
Before



After

Check out the mock-up curb extension on display tonight to experience how they will look and feel as someone who is driving and walking.

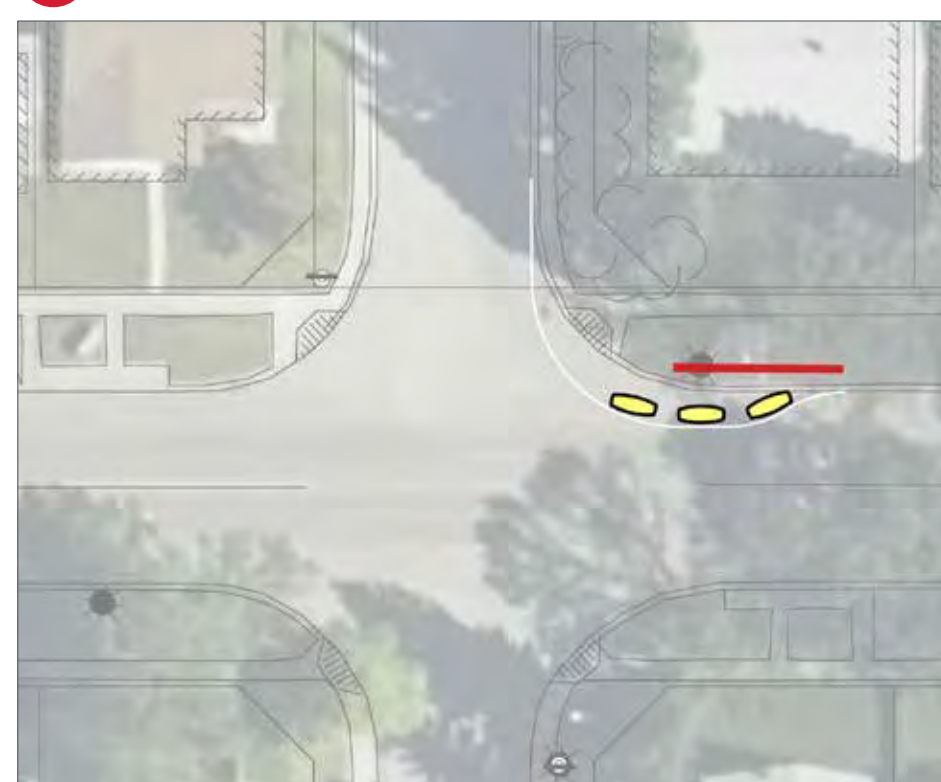
Phase 1: Pedestrian and school-site safety improvements



1 2 Northmount Dr. / 34 St. N.W.



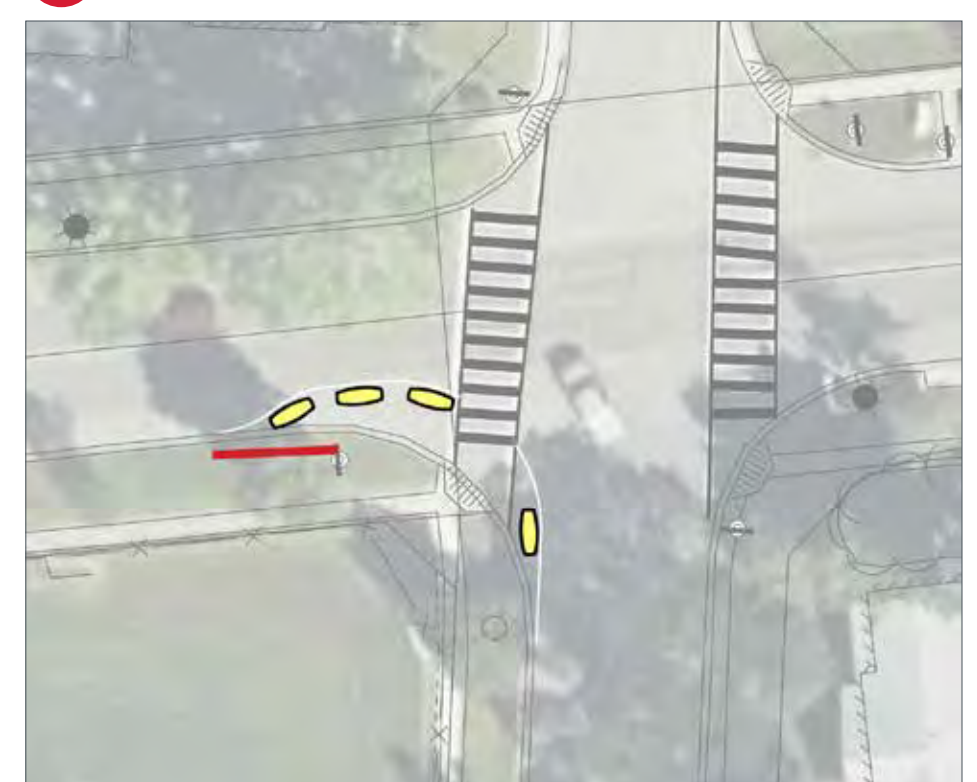
3 Northmount Dr. / Benson Rd. N.W.



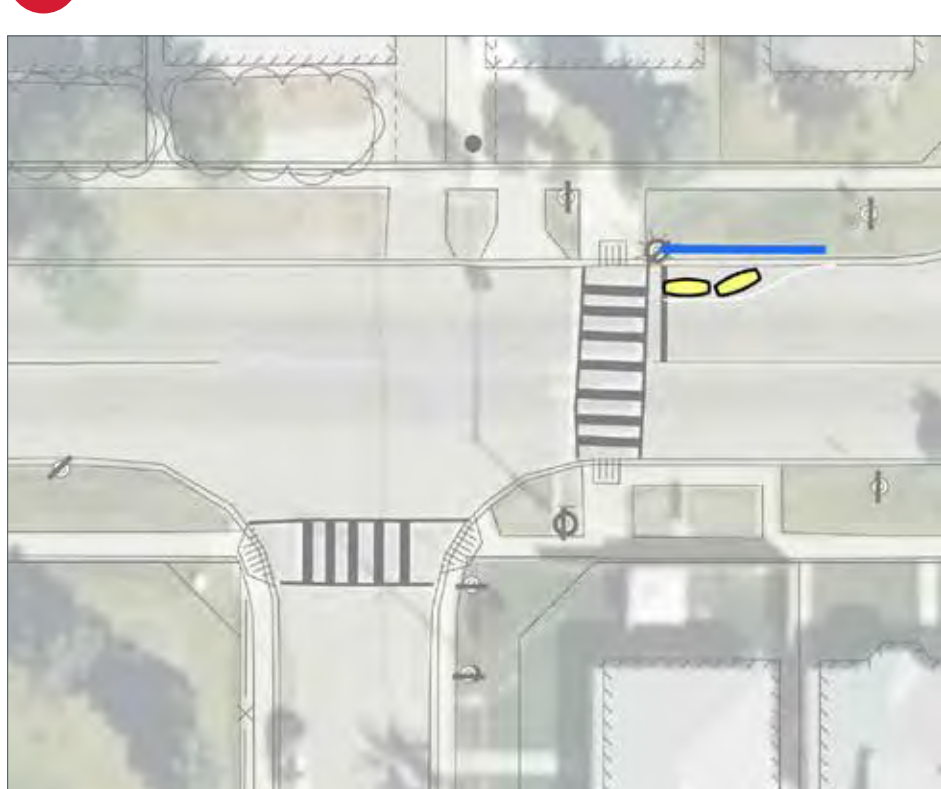
4 Northmount Dr. / Bowlen St. N.W.



5 Northmount Dr. / Brantford Dr. N.W.



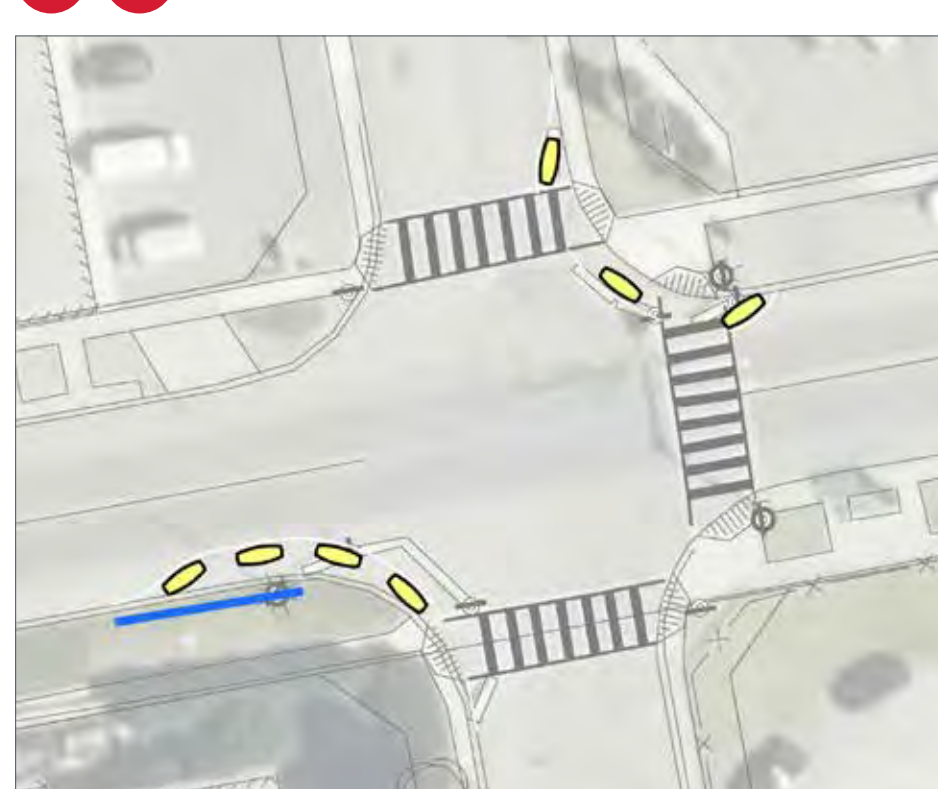
6 Northmount Dr. / Cheyenne Cr. / Chilcotin Rd.



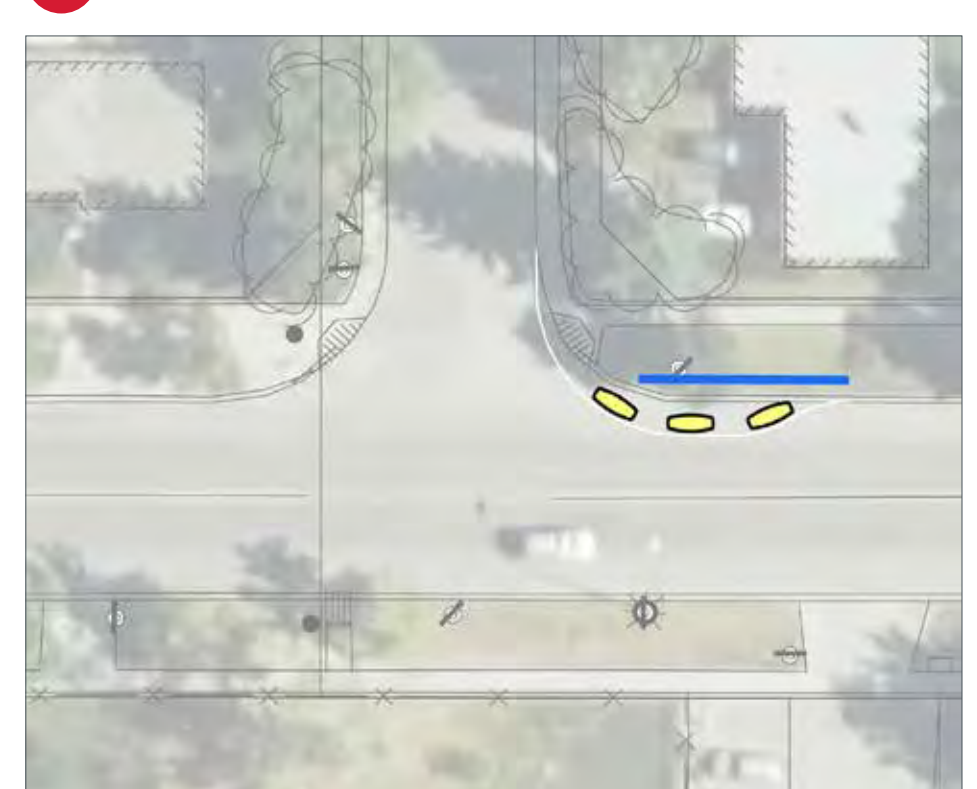
7 Northmount Dr. / Cherokee Dr. N.W.





8 9 Northmount Dr. / Collingwood Dr. N.W.



10 Northmount Dr. / Clarendon Dr. N.W.



 Parking changes
 Existing parking restrictions

Construction phasing and impacts

The City is committed to working with adjacent businesses and property owners to minimize disruptions and impacts during construction as much as possible.

Phase 1: 14 Street N.W. intersection improvements and paving

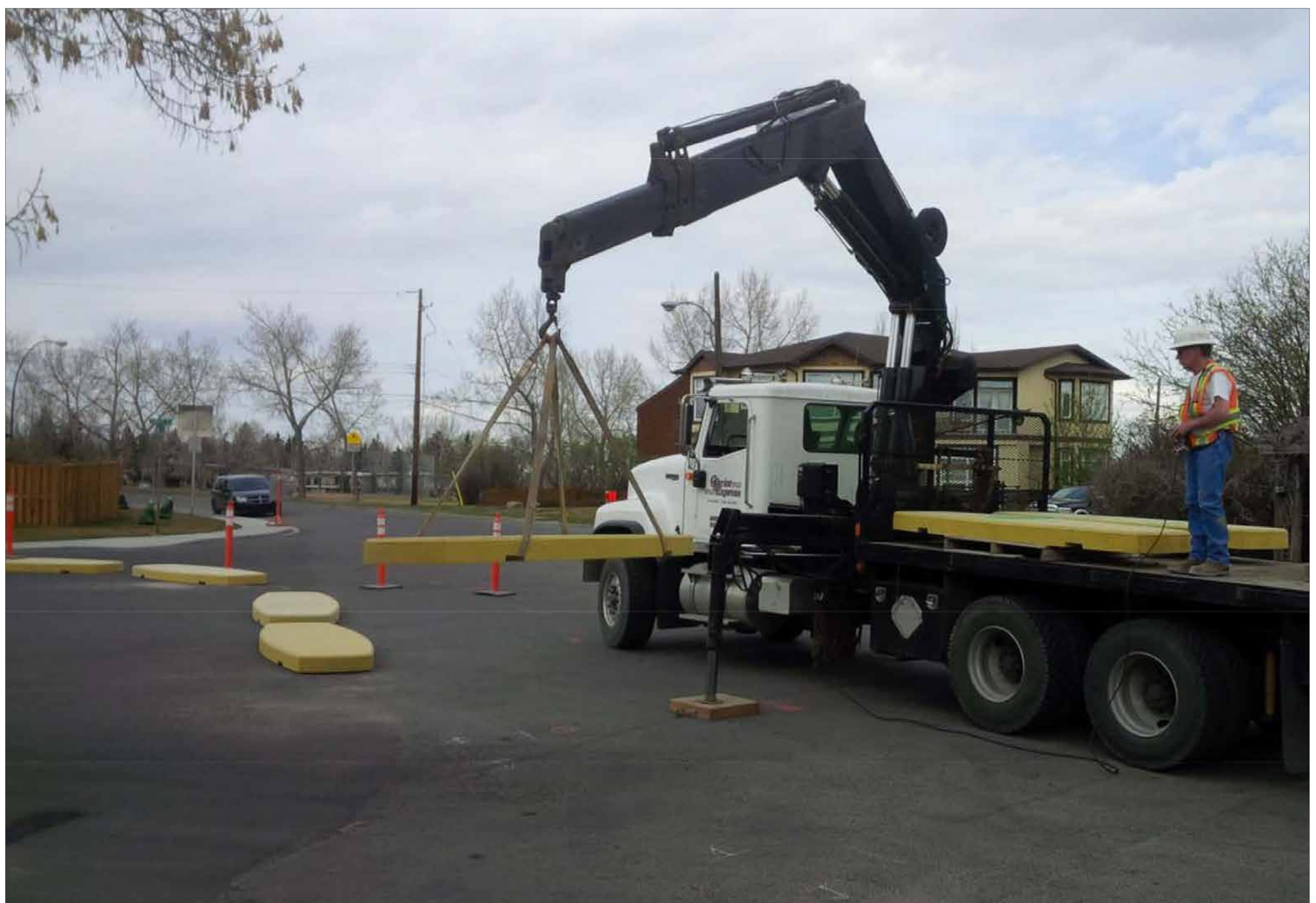
Construction is expected to begin at the end of June 2017 and be complete by the end of October 2017.

The contractor will notify businesses and residents prior to construction if access will be temporarily impacted.

During construction, any sidewalk or lane detours will be clearly marked.

Pedestrian improvements

The curb extensions will be built off-site and moved in place by a truck-mounted crane. Work is expected to take place during off-peak hours and there will be minimal impacts during this time.



Next steps

The City will communicate with stakeholders and provide updates throughout Phase 1 construction.

- Please contact 311 if you observe any issues during construction.
- We will let you know when funding becomes available for Phase 2 improvements.
- Sign up to receive construction and project updates at this information session or at calgary.ca/northmount

Thank you for coming!