

Calgary



Welcome!

**Northmount Drive N.W.
Improvement Project**

October 18, 2016

Options Evaluation Workshop



Purpose of Tonight's Workshop

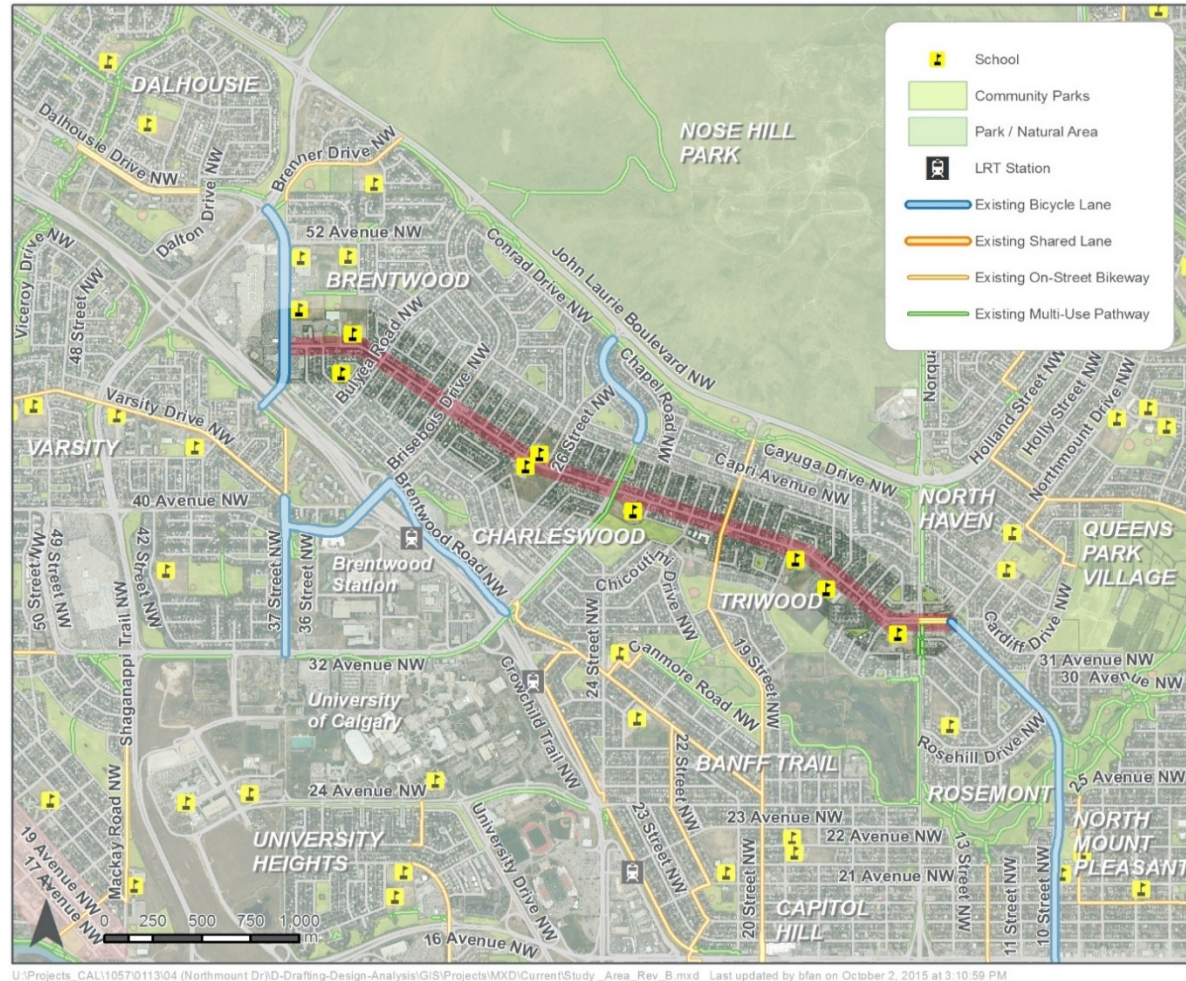
- Share **what we've heard** so far and how we have **incorporated your input** to address the issues you've identified
- Discuss the overall concept and **gather feedback on options**
- Discuss **next steps**





Project Overview

- Northmount Drive N.W. is **scheduled for re-paving** in 2017. This work presents an opportunity to **cost-effectively** improve the roadway design so it functions better for **everyone**.
- Improve **safety and mobility** for all users on Northmount Drive N.W.
- Council policies (Complete Streets and Pathway and Bikeway Implementation Plan)



U:\Projects_CAL\1057\0113\04 (Northmount Dr)\D-Drafting-Design-Analysis\GIS\Projects\MXD\Current\Study_Area_Rev_B.mxd Last updated by bfan on October 2, 2015 at 3:10:59 PM

Safety and mobility improvements for people walking

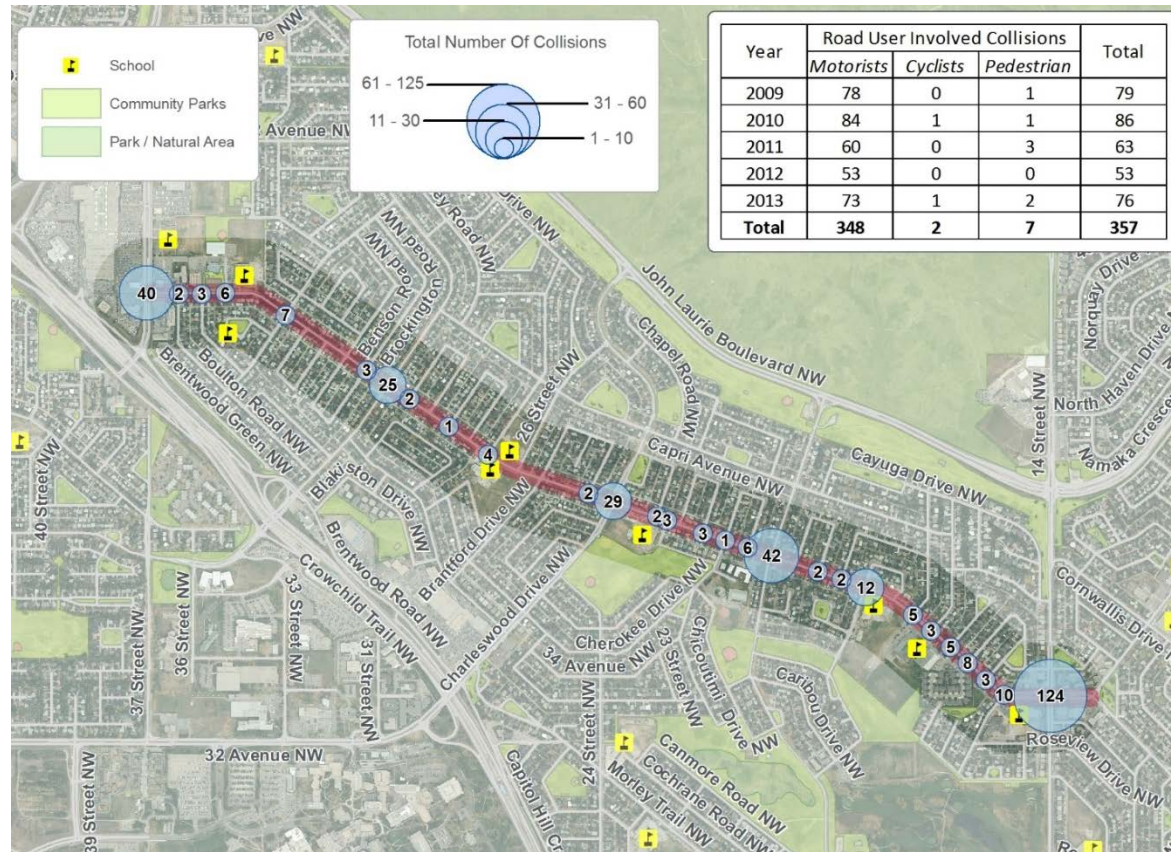
- Improve existing pedestrian crossings
- Identify new pedestrian crossings
- Reduce speeding





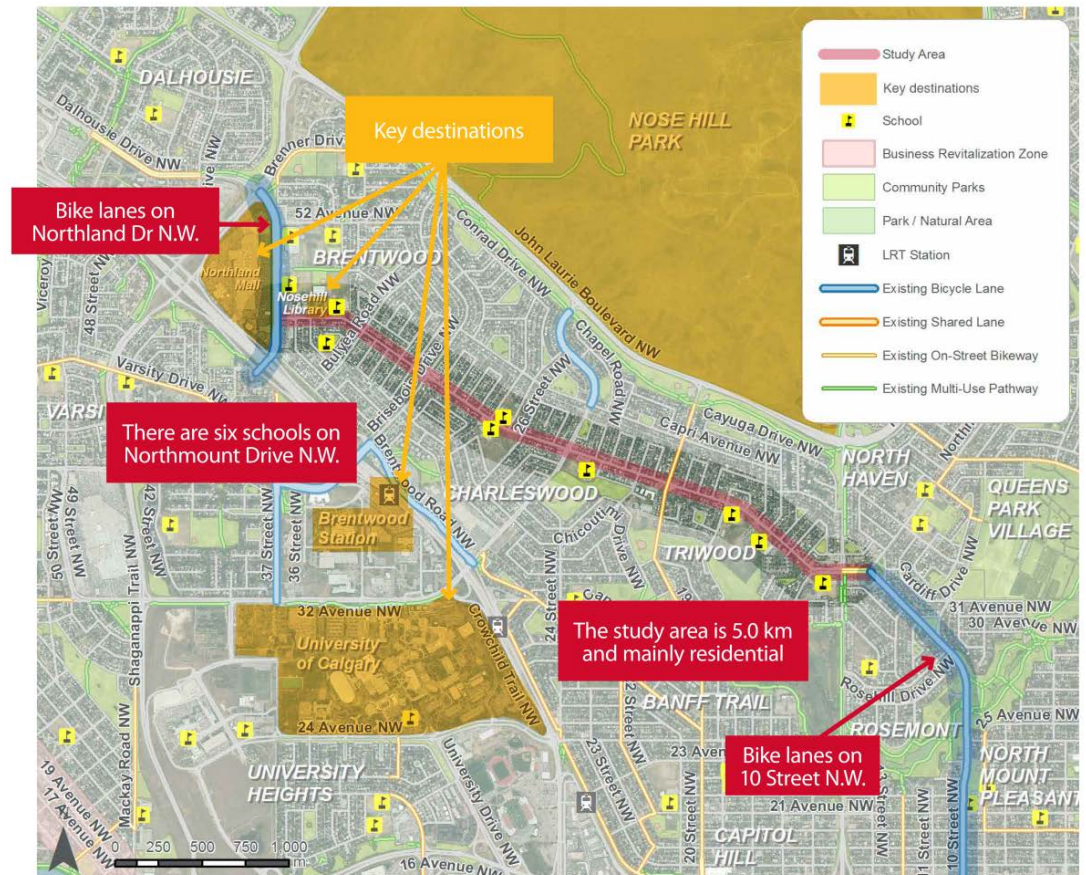
Safety and mobility improvements for people *driving*

- Improve and/or manage congestion
- Reduce speeding
- Reduce collisions
- Make the road more predictable
- Improve school bus zones



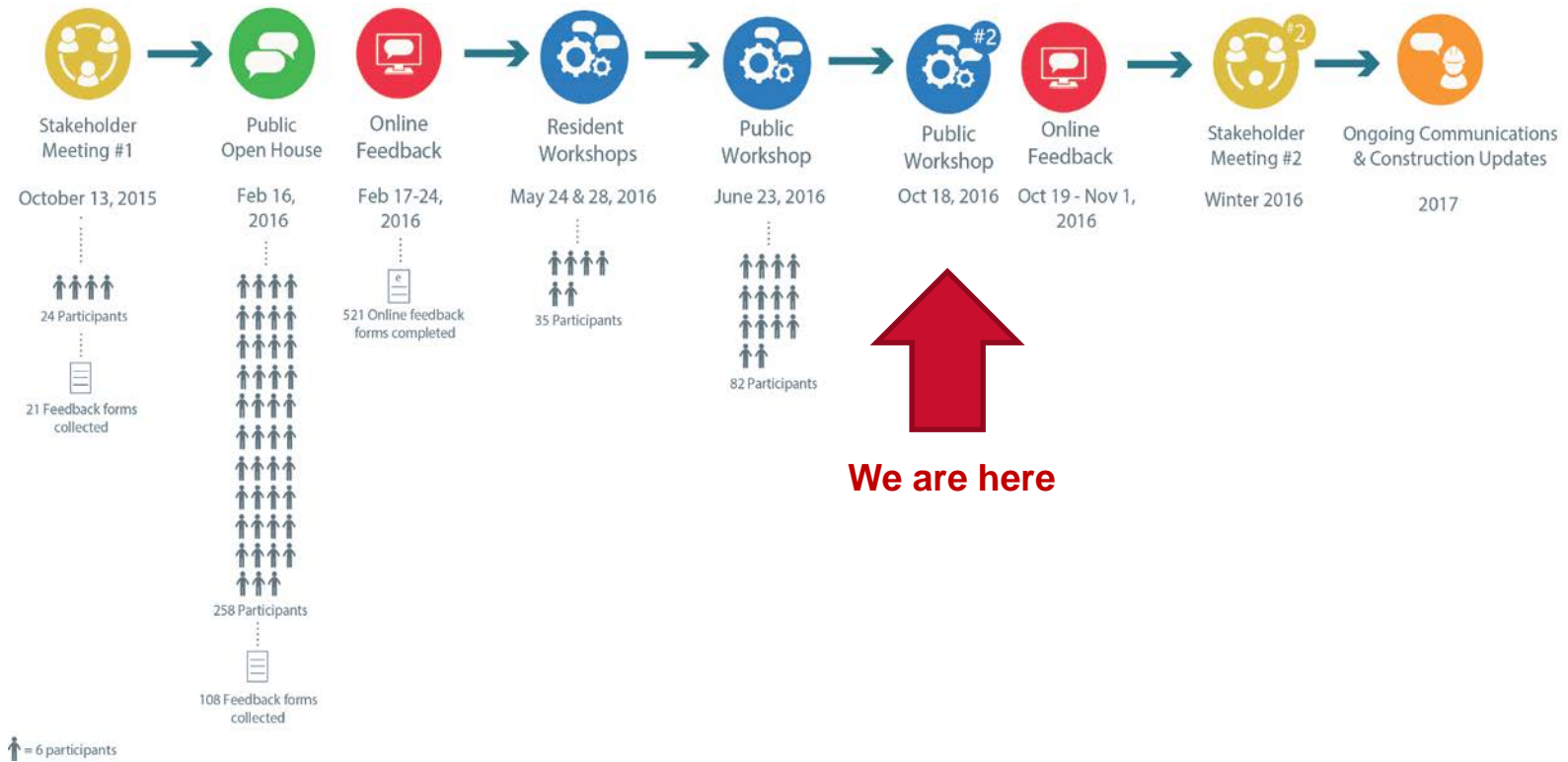
Safety and mobility improvements for people cycling

- Complete a gap in the bicycle network between Northland Drive N.W. and 10 Street N.W.
- Improve cycling connections to key destinations





Community Engagement Process





Key Issues and Improvements

Congestion



School Sites



Pedestrian Safety



Parking





What We Heard

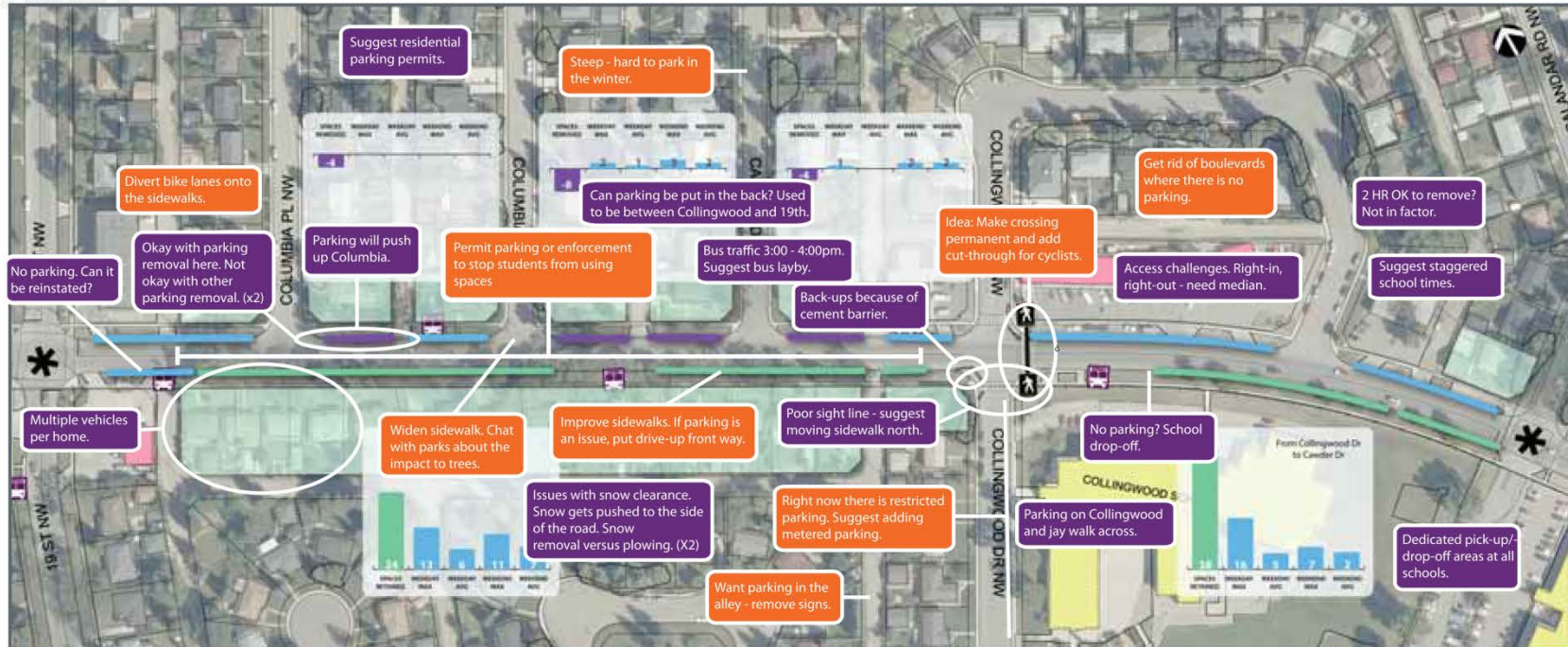
- Concerns about impacts of **parking** removal on access to homes
- **Safety** for all road users should be improved
- **Education** about the rules of the road is needed
- Limit **tree removal**
- **School bus** zones need to be improved
- **Improve facilities** for those who bike and walk
- New and improved **pedestrian crossings**
- **Speeding** and inconsistent speeds along the corridor are a concern
- **Congestion** is an issue at key locations



What We Heard

Detailed Comments (example)

PARKING



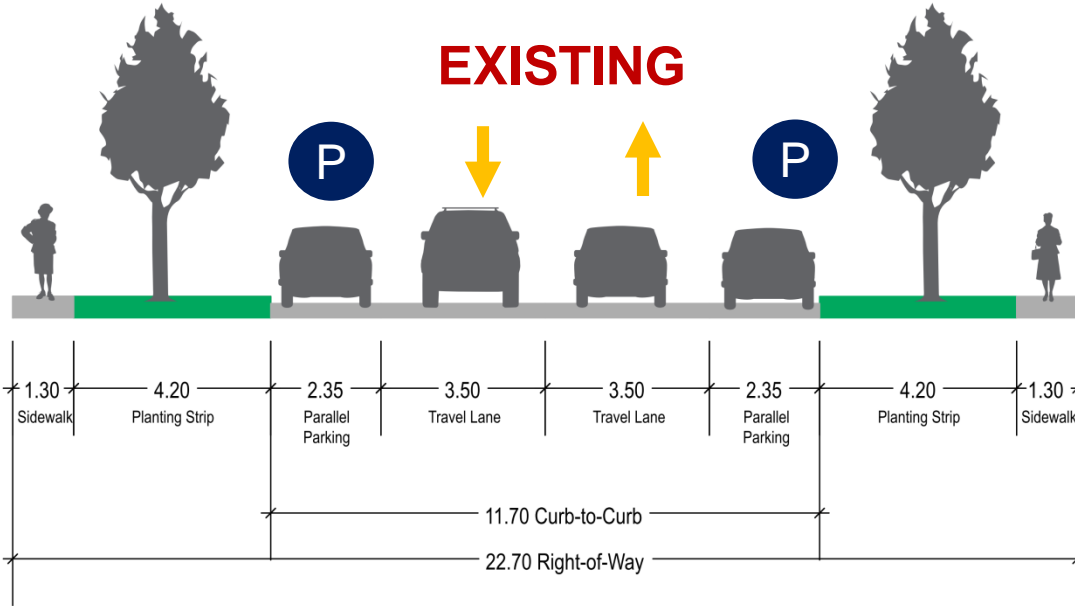
LEGEND:

- -- Public
- -- Residential

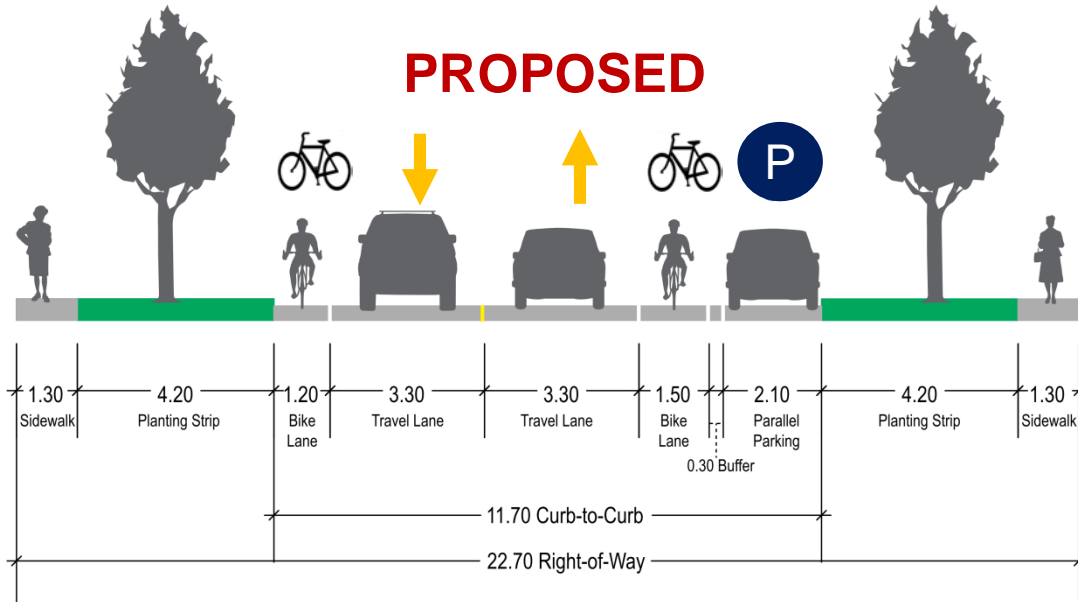


Overall Corridor Concept

EXISTING



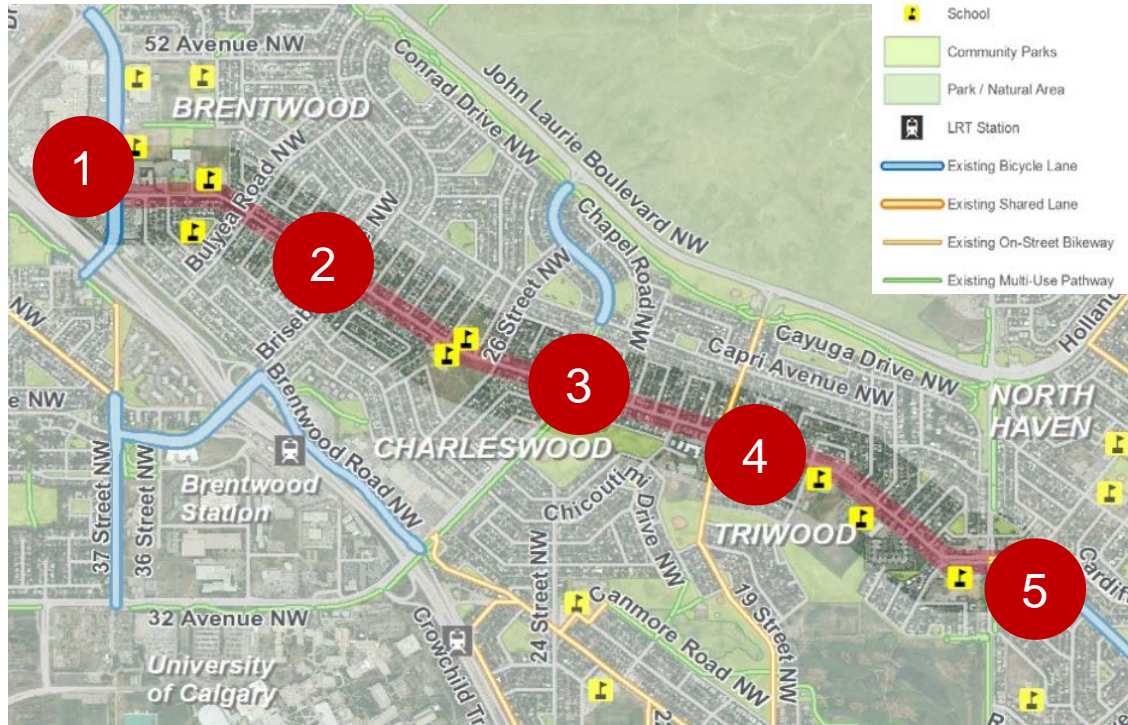
PROPOSED



- Bicycle lanes on both sides of the street
- No change to vehicle lanes
- Parking on one side of the street, except in areas of high demand



Congestion

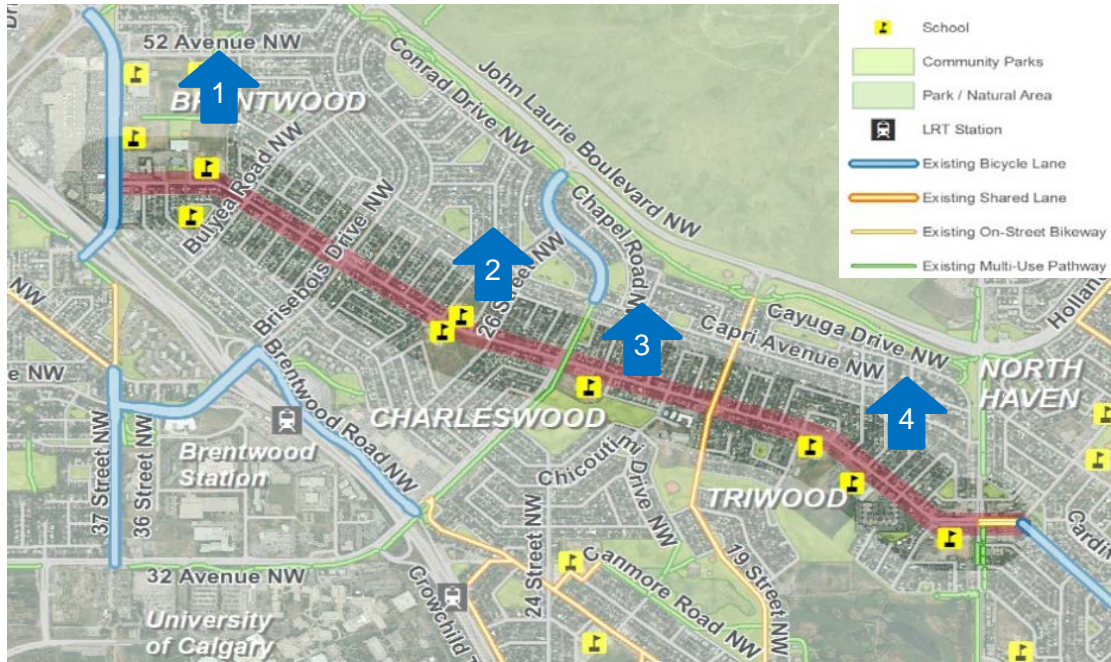


- 1 Northland Drive N.W.
- 2 Brisebois Drive N.W.
- 3 Charleswood Drive N.W.
- 4 19 Street N.W.
- 5 Carol Drive / 14 Street / Cambrian Drive N.W.

Options include:

- Improving traffic flow with new turn lanes
- Adjusting signal timing
- Improving pedestrian and cycling safety
- Maintaining or adding new parking

School Sites



- 1 Captain John Palliser
- 2 St. Luke Brentwood
- 3 Senator Patrick Burns
- 4 Collingwood St. Francis

Options include:

- Dedicated school bus waiting areas
- New pedestrian crossings
- Curb extensions
- Flashing pedestrian signals



Pedestrian Safety



Refuge Islands



Curb Extensions



Rapid Flashing Beacons





Parking

- Parking consolidated to one side of street in areas of lower demand
- Identify opportunities to minimize parking change
 - Fewest stalls impacted
 - Fewest fronting homes impacted
 - Lowest utilization
- Widening at select locations in higher demand areas
 - Higher cost
 - Utility impacts
 - Tree impacts
- Changes should ensure supply still satisfies demand

Thank You!

