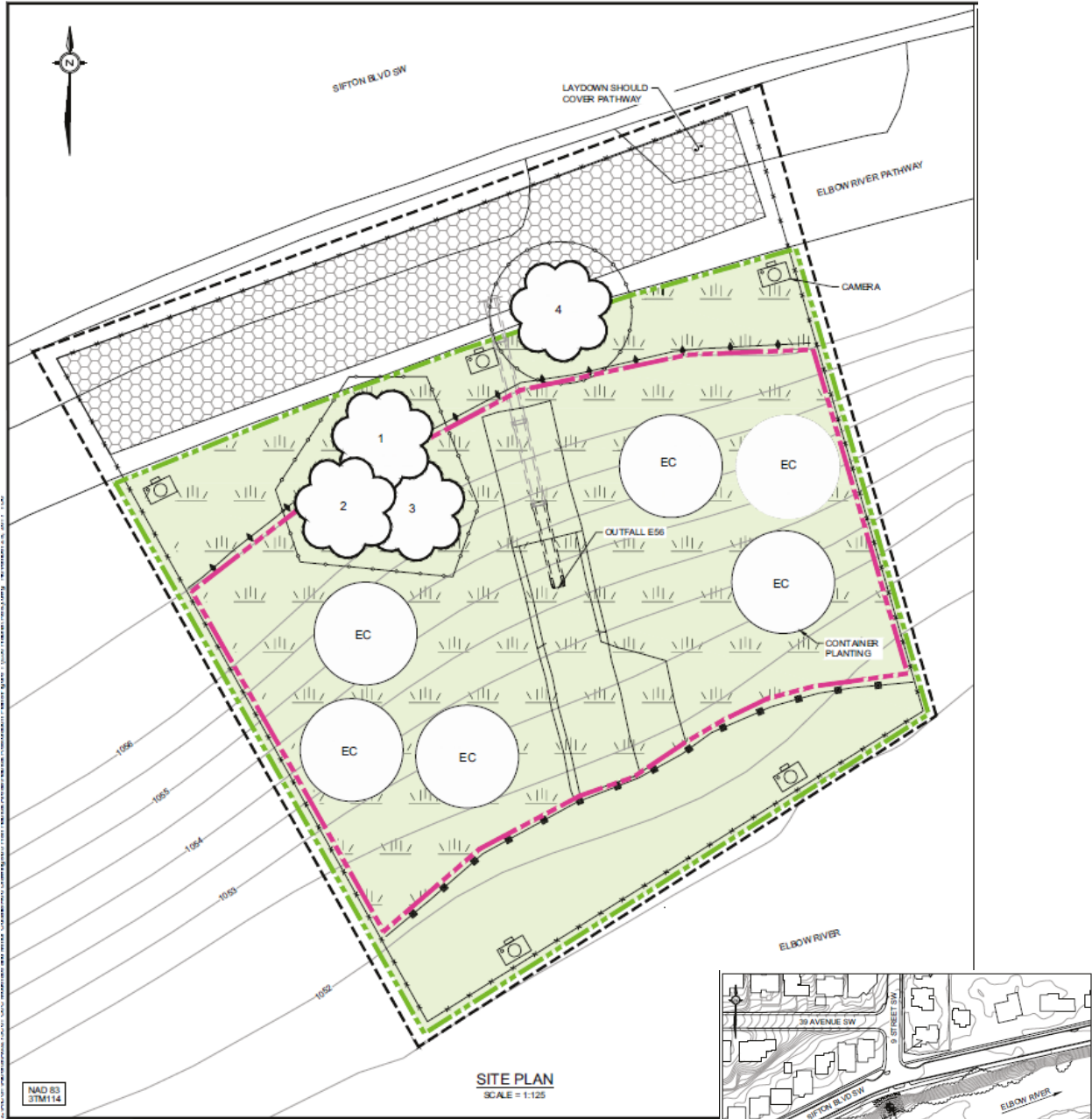
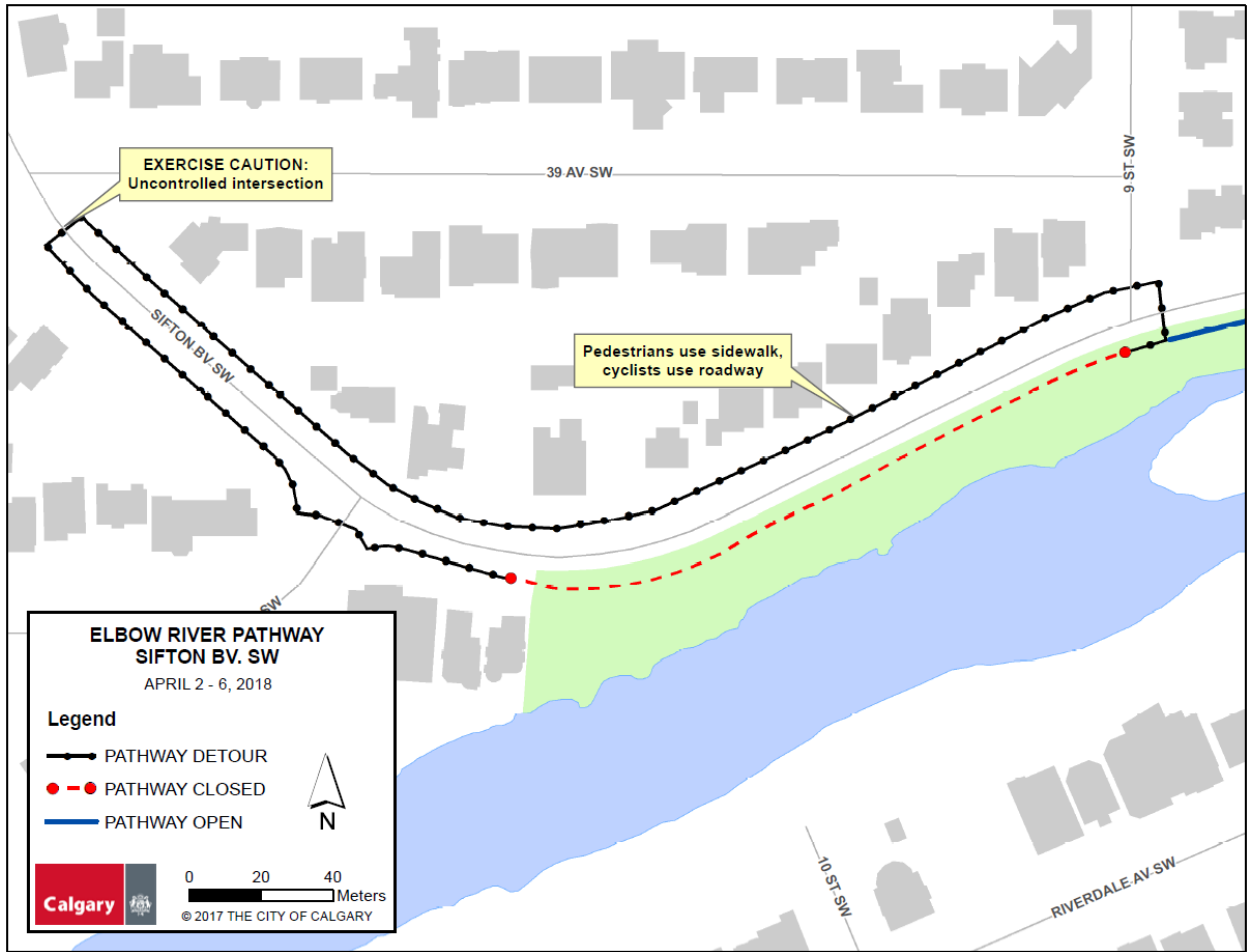


**E56 Project Summary:**

At outfall E56, the existing concrete apron and pipe sections at the outfall are damaged and have become separated from each other, resulting in seepage between sections of pipe. We will replace the concrete apron and pipe sections with a galvanized steel pipe to allow flows to enter into the Elbow River. Placement of bedding gravel and rip rap will be added to the outfall which will provide erosion protection for the outfall and the Elbow River.



**E56 Site Map**



E56 Pathway Detour Map