

Labour Market Review

Patrick Walters, City Economist | Estella Scruggs, Corporate Research Analyst

March 7, 2014

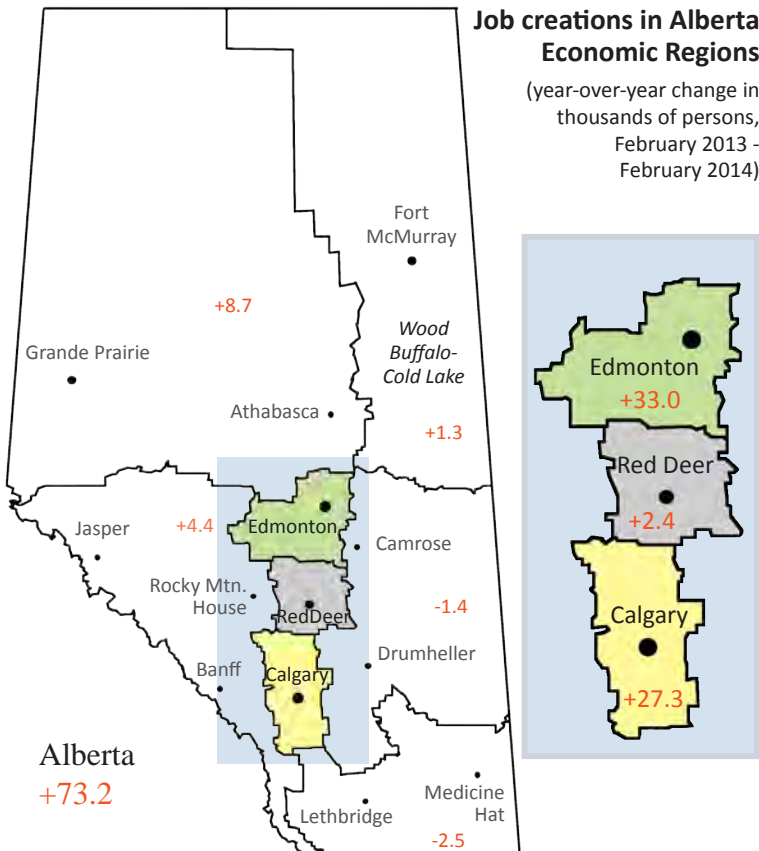
CER unemployment rate was 4.5 per cent in February 2014

The seasonally unadjusted data from Statistics Canada's February 2014 Labour Force Survey for the Calgary Economic Region (CER) showed the following:

- Total employment in the CER was estimated at 841,700 in February 2014, down from 845,400 in the previous month but up 27,300 over the same time in 2013. Full-time employment was estimated at 701,000 and part-time employment at 140,700. Full-time employment increased 17,700 and part-time employment by 9,600 year-over-year. The majority of jobs created were in the goods-producing sector (26,200). Within that sector, the construction industry had an employment increase of 19,300; which was largely in response to relatively strong employment and population growth. Job losses were mainly in the service-producing sector. Major job losses were in transportation and warehousing (-10,000) and educational services (-8,500).
- Total job growth in the Calgary-Edmonton Corridor was estimated at 62,700: Calgary (27,300), Red Deer (2,400) and Edmonton (33,000). The Calgary-Edmonton Corridor accounted for 85.7 per cent of the jobs created in Alberta over the previous twelve months.

- The unemployment rate was estimated at 4.5 per cent, unchanged from the previous month but down from 5.0 per cent in February 2013. In the twelve month period between February 2013 and February 2014, the decline in the unemployment rate was in response to employment growing (27,300) at a faster rate than labour force growth (24,100).
- The working age population was estimated at 1,204,000 in February 2014, up from 1,158,100 in February 2013. Also, the labour force was estimated at 881,000 in February 2014, up from 857,000 a year earlier. Consequently, the labour force participation rate was estimated at 73.2 per cent in February 2014, down from 74.0 per cent in February 2013.
- The hourly wage rate in Calgary was estimated at \$28.78 as of February 2014, down from \$29.08 in February 2013. The 12-month-moving-average for the hourly wage rate was estimated at \$28.89 for February 2014, up from \$27.98 in February 2013.

Next update: April 4 2014



Source: Statistics Canada, Corporate Economics, March 2014

Labour Force Statistics

Economic Regions (Seasonally Adjusted 3-Month-Moving-Average)

	Description	Feb-14	Jan-14	Feb-13	Annual Change
Calgary	Working Age Population ('000)	1,204.0	1,200.9	1,158.0	46.0
	Labour Force ('000)	889.3	891.1	865.0	24.3
	Labour Force Participation Rate (%)	73.5	73.7	74.3	(0.8)
	Employment ('000)	850.1	850.2	822.5	27.6
	Employment Rate (%)	70.6	70.8	71.0	(0.4)
	Unemployment ('000)	39.7	40.5	41.8	(2.1)
Edmonton	Working Age Population ('000)	1,085.1	1,082.5	1,045.6	39.5
	Labour Force ('000)	803.7	803.1	764.2	39.5
	Labour Force Participation Rate (%)	74.0	74.1	73.0	1.0
	Employment ('000)	762.8	760.1	729.6	33.3
	Employment Rate (%)	70.4	70.5	69.9	0.5
	Unemployment ('000)	39.4	40.9	33.4	6.0
Alberta	Working Age Population ('000)	3,230.8	3,222.9	3,121.8	109.0
	Labour Force ('000)	2,356.2	2,354.1	2,279.0	77.3
	Labour Force Participation Rate (%)	73.0	73.1	73.0	0.0
	Employment ('000)	2,258.6	2,251.7	2,184.4	74.1
	Employment Rate (%)	69.9	69.9	69.9	(0.0)
	Unemployment ('000)	105.9	108.2	102.4	3.4
	Unemployment Rate (%)	4.5	4.6	4.5	0.0

Source: Statistics Canada, seasonally adjusted by Corporate Economics, March 2014

Labour Market Review

Patrick Walters, City Economist | Estella Scruggs, Corporate Research Analyst

March 7, 2014

Who We Are

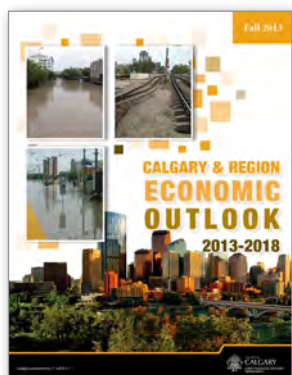
Corporate Economics provides services in four areas: forecasting, information provision, policy analysis and consulting. We also monitor the current economic trends which allows us to develop unique insights on how external events are impacting the local economy and the Municipal government. We are experienced at researching different economic topics and developed reliable methods of forecasting and analysis.

For more information, please contact:

Patrick Walters
403.268.1335 or patrick.walters@calgary.ca

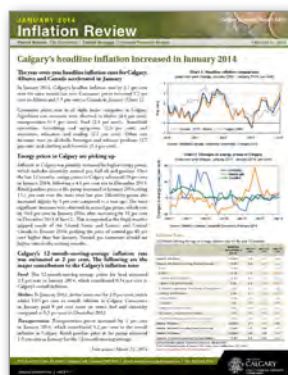
Many of our publications are available on the internet at www.calgary.ca/economy.

Forecasting



- ▶ Calgary & Region Economic Outlook
- ▶ Energy Reports on Natural Gas and Crude Oil

Information Provision



- ▶ Labour Market Review
- ▶ Inflation Review
- ▶ Current Economic Analysis
- ▶ Construction Inflation

Policy Analysis



- ▶ A Case of Fiscal Imbalance: The Calgary Experience
- ▶ Diesel Fuel Price Pass-Through in Calgary
- ▶ Calgary Residential and Commercial Real Estate Markets

Corporate Research Analyst: Estella Scruggs

The City of Calgary provides this information in good faith. However, the aforementioned organization makes no representation, warranty or condition, statutory express or implied, takes no responsibility for any errors and omissions which may contained herein and accepts no liability for any loss arising from any use or reliance on this report.

Source: Statistics Canada and Corporate Economics