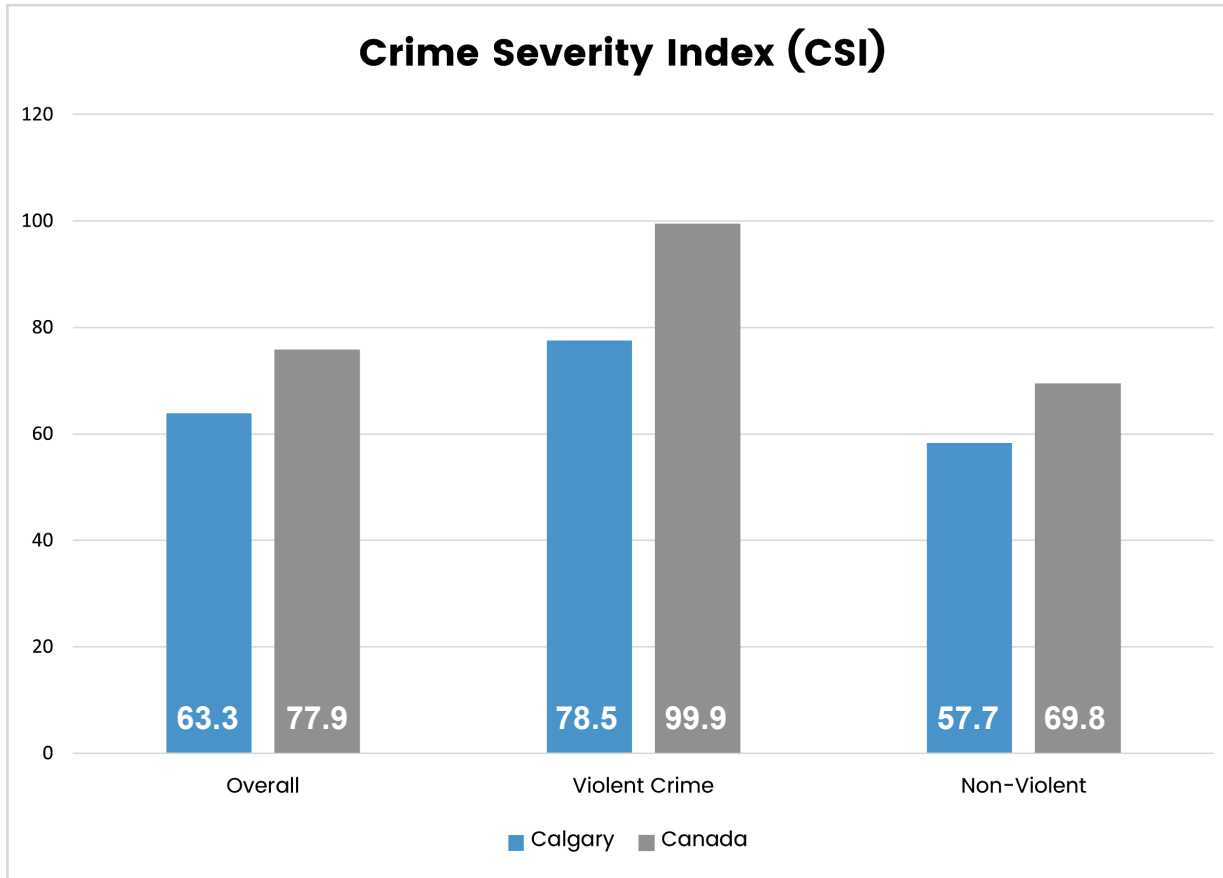


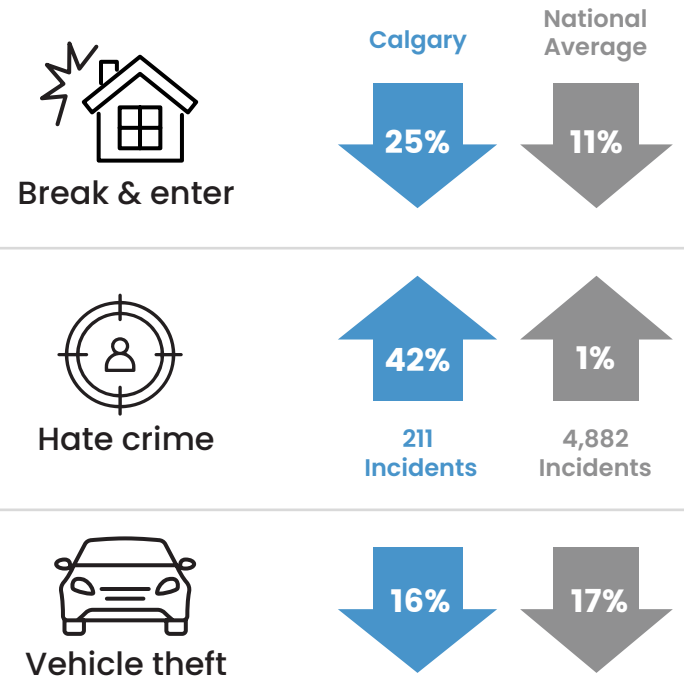


# CRIME SEVERITY INDEX (CSI)

Calgary's Crime Severity Index (CSI) is 63.3, representing a continued decline since 2022, and well below the national average.



## Police-reported Crime in Canada 2024 Highlights



The CSI considers the number and the severity of crimes across the country and is tallied every year since 2009 by Statistics Canada. Unlike conventional ways of counting the number of crimes in a city, the CSI considers the seriousness of each offence, which provides a more nuanced view. Seriousness is determined based on court sentences across Canada.

For example, conventional crime data rates a homicide as equal to a property theft. With the CSI, a homicide has 280 times the impact of a property theft. Researchers use both the CSI, along with conventional crime rates, to better understand our population, economy, resources, culture, environment and society.

For more information about police-reported crime in Canada, visit <https://www.statcan.gc.ca/>