

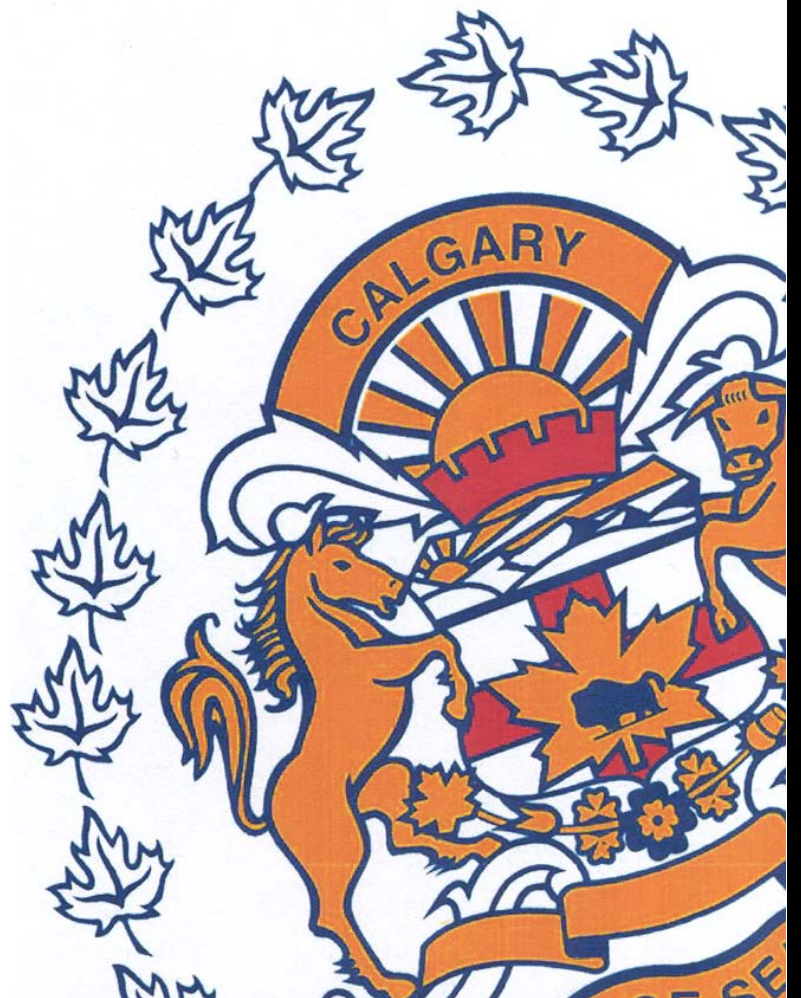
MARCH

Monthly Statistical

REPORT

2015

Compiled by: Centralized Analysis Unit
Crime and Intelligence Analytical Section
Strategic Services Division
© Calgary Police Service 2015



The Calgary Police Service provides this information in good faith but it provides no warranty, nor accepts any liability arising from any incorrect, incomplete or misleading information.

TABLE OF CONTENTS

	<i>Page</i>
Monthly Highlights - STATIC NUMBER COMPARISON	1
Calgary Crime Statistics – STATIC NUMBERS	
Person Crimes	2
Property Crimes	3
Other Criminal Code/Selected Other/Drug Offences	4
Calgary Traffic Collisions – CUMULATIVE NUMBERS	5
Calgary Crime Statistics - CUMULATIVE NUMBERS	6

REPORT NOTES

Most of the statistical data in this report are derived from the Police Information Management System (PIMS) and compiled by the Centralized Analysis Unit. The numbers reported may change on a daily basis due to the dynamic nature of offences being reported and cleared. Disorder data is derived from the CAD system and is static.

To a large extent, the data in this report are based on accumulated to date information. ***(Except for the Monthly Highlights which are based on static information (i.e.: a snap-shot in time).***

- For offences based on accumulated to date information, the number of offences recorded may be higher than previously reported (i.e. in previous statistical reports) due to late reporting. Although this does not greatly affect the number of occurrences for all offences, for some categories it may be as high as a 30-40% increase. The published data for the current period can therefore be expected to increase as time passes. As a result, readers should exercise caution when making comparisons between historical data and current data (i.e. previous year to this year) as data for the historic period will now include late reported offences, but data for the current period will not at this time. To achieve an effective comparison, current data should be evaluated against the originally published data for the historic period.
- Likewise, late reporting affects the number and percentage of offences cleared. Cases are often cleared months and sometimes years later. Consequently, clearances for previous years may appear to be much higher than those of the present year. Cases “cleared by charge” and those “cleared otherwise” are included in these totals.
- For offences based on “static” or “snap-shot” information, data totals will only reflect the number of offences reported in the original publication. They are not updated. Although late reporting may occur, and offences may continue to be cleared as time passes, these new events are not taken into account when preparing this statistical report.

A single incident may result in multiple offences, with each unique *Criminal Code* violation within the incident being counted as an offence. Furthermore, person crime offences are typically counted by the number of victims. Please note that offences are assigned to the month in which the offence "started", not the month they were reported or cleared. Also note that “attempted” incidents are included in these totals. For a more detailed explanation of the Offence counting procedure, please contact the Centralized Analysis Unit.

Monthly Highlights – STATIC NUMBER COMPARISON

To reduce the impact of late reporting, comments on this page are a comparison between the CPS March 2015 Statistical Report and the CPS March 2014 Statistical Report. To achieve an effective comparison, current data should be evaluated against the originally published data for the historic period.

MARCH 2015

PERSON CRIME

- ◆ Reported **person crimes** for the month of March 2015 increased 19.3% when compared to March 2014 (685 offences in March 2015 vs. 574 in March 2014).
- ◆ Total **robbery** offences for the month of March 2015 increased 47.4% when compared to March 2014 (84 offences in March 2015 vs. 57 in March 2014);
During March 2015 there were:
 - 6 **financial robberies** (compared to 0 in March 2014);
 - 24 **commercial robberies** (compared to 13 in March 2014);
 - 51 **person robberies** (compared to 41 in March 2014); and
 - 3 **home invasions** (this count hasn't changed from 3 in March 2014).
- ◆ **Assaults** increased 15.6% this month (518 offences in March 2015 vs. 448 in March 2014).
- ◆ **Sex offences** increased 47.4% this month (56 **sex offences** in March 2015 compared to 38 in March 2014).

PROPERTY CRIME

- ◆ Reported **property crimes** this month increased 65.1% when compared to March 2014 (4353 offences in March 2015 compared to 2636 in March 2014).
- ◆ **Vehicle theft** (including attempts) increased 155.6% this month when compared to March 2014 (749 offences in March 2015 vs. 293 in March 2014).
- ◆ **Theft** offences increased 67.2% this month when compared to March 2014 (2072 offences in March 2015 vs. 1239 in March 2014).
- ◆ **Break and enter** offences this month increased 47.0% when compared to March 2014 (672 offences this month compared to 457 in March 2014).
 - **Residential break and enter** offences this month increased 50.3% when compared to March 2014 (242 offences in March 2015 vs. 161 in March 2014); and
 - **Commercial break and enter** offences increased 31.7% this month when compared to March 2014 (287 offences in March 2015 vs. 218 in March 2014).
- ◆ **Fraud related** offences increased 40.0% this month (245 offences in March 2015 vs. 175 in March 2014).

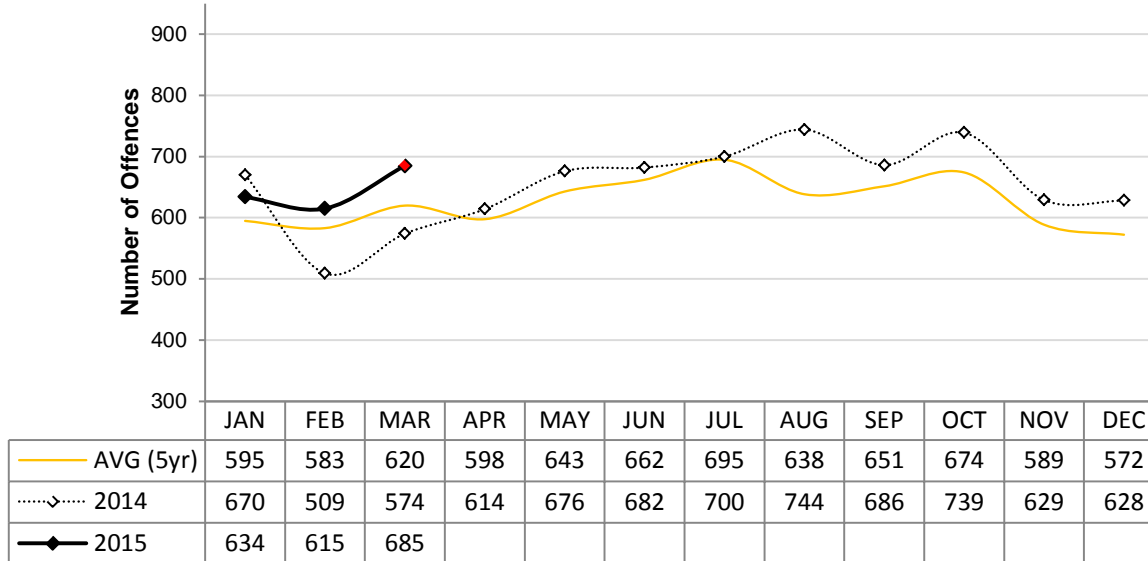
Calgary Person Crime Statistics – STATIC NUMBERS

The static crime numbers on this page are derived from historical Calgary Police Service Monthly Statistical Reports. These statistics are used when writing the Monthly Highlights page in order to make a fair comparison using data which has not been allowed to increase due to late reporting of crime. Using static numbers allows us to compare crime levels at a specific point in time and make an accurate determination of increases or decreases. The cumulative crime numbers (pages 8 – 11) are statistics derived from the CPS Police Information Management System. P.I.M.S. cannot produce static numbers and therefore the cumulative numbers reflect any late reporting of crime. To achieve an effective comparison, current data should be evaluated against the originally published data for the historic period. *Due to the dynamic nature of ongoing homicide investigations these numbers may have been manually updated to reflect the current homicide count. Due to manually updating, it's possible 1 or more homicides may be reflected within the assault category. The homicide counts are provided by the homicide unit.

MARCH 2015

	Current Month Number Of Offences			Year To Date Number Of Offences			% Cleared 2015
	2014	2015	% Change (2014-2015)	2014	2015	% Change (2014-2015)	
PERSON CRIMES							
Homicide*	1	1	0.0%	6	7	16.7%	42.9%
Other Offences Causing Death	0	0	N/A	0	0	N/A	N/A
Attempted Homicide	1	0	-100.0%	1	4	300.0%	0.0%
Sex Offences	38	56	47.4%	136	165	21.3%	23.0%
Robbery:							
Financial	0	6	N/A	8	8	0.0%	87.5%
Commercial	13	24	84.6%	46	63	37.0%	11.1%
Person	41	51	24.4%	127	143	12.6%	24.5%
Home Invasion	3	3	0.0%	14	20	42.9%	25.0%
Total Robbery	57	84	47.4%	195	234	20.0%	23.1%
Assault:							
Level 3 - Aggravated	10	9	-10.0%	32	23	-28.1%	52.2%
Level 2 - Weapon/Bodily Harm	88	124	40.9%	293	361	23.2%	59.3%
Level 1 - Common Assault	329	365	10.9%	1005	1018	1.3%	71.7%
Assault Police Officer	20	16	-20.0%	44	51	15.9%	100.0%
Discharge Firearm with Intent	0	0	N/A	7	0	-100.0%	N/A
Other Assaults	1	4	300.0%	3	11	266.7%	72.7%
Total Assault	448	518	15.6%	1384	1464	5.8%	69.3%
Misc Person Crimes	29	26	-10.3%	92	132	43.5%	40.9%
TOTAL PERSON CRIMES	574	685	19.3%	1814	2006	10.6%	58.0%

**Person Crime-Static Numbers
YTD Jan 01 to Mar 31 2015**

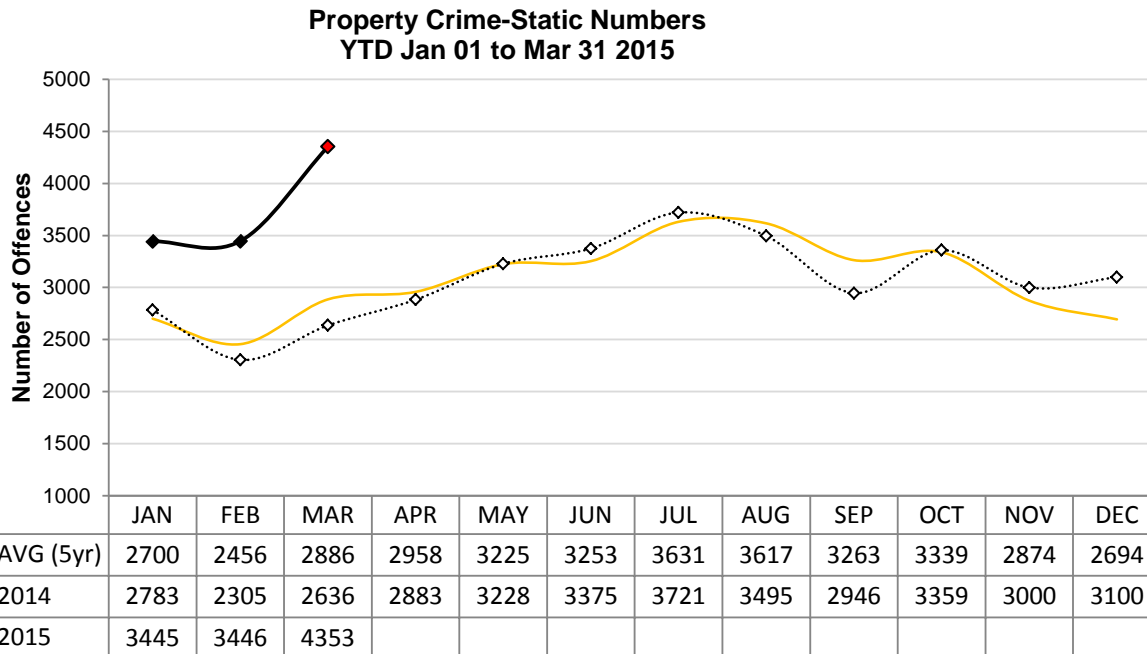


Calgary Property Crime Statistics – STATIC NUMBERS

The static crime numbers on this page are derived from historical Calgary Police Service Monthly Statistical Reports. These statistics are used when writing the Monthly Highlights page in order to make a fair comparison using data which has not been allowed to increase due to late reporting of crime. Using static numbers allows us to compare crime levels at a specific point in time and make an accurate determination of increases or decreases. The cumulative crime numbers (pages 8 – 11) are statistics derived from the CPS Police Information Management System. P.I.M.S. cannot produce static numbers and therefore the cumulative numbers reflect any late reporting of crime. To achieve an effective comparison, current data should be evaluated against the originally published data for the historic period.

MARCH 2015

	Current Month Number Of Offences			Year To Date Number Of Offences			% Cleared 2015
	2014	2015	% Change (2014-2015)	2014	2015	% Change (2014-2015)	
PROPERTY CRIMES							
Break and Enter:							
Residential B&E	161	242	50.3%	516	666	29.1%	7.5%
Commercial B&E	218	287	31.7%	517	828	60.2%	6.5%
Other B&E	74	140	89.2%	210	348	65.7%	6.9%
Unlawfully in Residence	4	3	-25.0%	10	9	-10.0%	77.8%
Total Break and Enter	457	672	47.0%	1253	1851	47.7%	7.3%
Theft	1239	2072	67.2%	3851	5627	46.1%	23.3%
Vehicle Theft (including attempts)	293	749	155.6%	987	1959	98.5%	7.6%
Fraud Related	175	245	40.0%	623	720	15.6%	35.3%
Other Property Crimes	472	615	30.3%	1432	1622	13.3%	22.0%
TOTAL PROPERTY CRIMES	2636	4353	65.1%	8146	11779	44.6%	18.8%



Calgary Other Crime Statistics – STATIC NUMBERS

The static crime numbers on this page are derived from historical Calgary Police Service Monthly Statistical Reports. These statistics are used when writing the Monthly Highlights page in order to make a fair comparison using data which has not been allowed to increase due to late reporting of crime. Using static numbers allows us to compare crime levels at a specific point in time and make an accurate determination of increases or decreases. The cumulative crime numbers (pages 8 – 11) are statistics derived from the CPS Police Information Management System. P.I.M.S. cannot produce static numbers and therefore the cumulative numbers reflect any late reporting of crime. To achieve an effective comparison, current data should be evaluated against the originally published data for the historic period.

MARCH 2015

	Current Month Number Of Offences			Year To Date Number Of Offences			% Cleared 2015
	2014	2015	% Change (2014-2015)	2014	2015	% Change (2014-2015)	
OTHER CRIMINAL CODE							
Vice	1	4	300.0%	5	5	0.0%	80.0%
Gaming	0	0	N/A	1	0	-100.0%	100.0%
Weapon Related	61	76	24.6%	195	272	39.5%	99.5%
Misc	537	604	12.5%	1509	1771	17.4%	90.9%
TOTAL OTHER CRIMINAL CODE	599	684	14.2%	1710	2048	19.8%	91.9%
TOTAL OVERALL CRIMINAL CODE (excluding traffic)	1198	1368	14.2%	3420	4096	19.8%	38.5%
SELECTED OTHER							
Criminal Code Traffic	223	229	2.7%	666	599	-10.1%	99.8%
Drugs	130	142	9.2%	418	416	-0.5%	100.0%
Selected Non Criminal Code:							
Accidental/Sudden Death	73	55	-24.7%	179	181	1.1%	N/A
Missing Persons	180	220	22.2%	557	663	19.0%	N/A
Court Order	96	134	39.6%	290	352	21.4%	N/A
Domestic Information	1013	1127	11.3%	2999	3236	7.9%	N/A
Domestic Information Standby	60	76	26.7%	178	226	27.0%	N/A
Total Selected Non Criminal Code	1422	1612	13.4%	4203	4658	10.8%	N/A
Statutes (Federal/Provincial/Municipal)	65	67	3.1%	208	211	1.4%	99.5%
TOTAL SELECTED OTHER	1840	2050	11.4%	5495	5884	7.1%	99.8%

Number of Drug Offences Year To Date

	2011	2012	2013	2014	2015	Trend	
Demand	196	235	226	274	235		
Supply	225	192	148	144	181		
Total	421	427	374	418	416		
	Drug Type						
	Cannabis	282	268	220	257	192	
	Cocaine/Crack	111	120	121	112	138	
	Heroin	1	6	6	10	24	
	All Other Drugs	27	33	27	39	62	
	Total	421	427	374	418	416	

Calgary Traffic Collisions – CUMULATIVE NUMBERS

MARCH 2015

	Current Month # of Collisions			Year To Date # of Collisions			Year To Date Rate per 100,000 population		
	2013	2014	2015	2013	2014	2015	2013	2014	2015
Fatal Collisions	1	3	2	6	9	2	0.5	0.8	0.2
Injury Collisions	218	209	176	627	670	568	54.5	58.3	47.5
Property Damage Collisions	3639	4039	2487	10028	12426	9960	872.3	1080.9	833.3
e-Collision Reports*	24	28	260	73	69	472	6.4	6.0	39.5
Total Collisions	3882	4279	2925	10734	13174	11002	933.8	1146.0	920.5
<i>Parking Lot Collisions</i>	744	767	486	2125	2267	1709	184.9	197.2	143.0
Total Reportable Collisions	3138	3512	2439	8609	10907	9293	748.9	948.8	777.5

Source: Cumulative data; PIMS (April 2014)

NOTE: Total Reportable Collisions exclude collisions along private roadways or public parking lots.

The number of reported traffic collisions may continue to increase over time. Due to data collection and reporting methods, totals for the current month may not be comparable to previous years.

* e-Collision reporting is a data system which became operational in July 2009. At the time this report was published it was not possible to separate all collisions based on level of severity or to determine whether they occurred in a parking lot. Therefore, as e-Collision reports are completed and entered into the CPS records management system, it is determined whether or not they are reportable, and they are removed from the e-Collision count total and reclassified based on level of severity.

Top Collision Locations and Primary Cause of Events

Number of Collisions	Location	Primary Cause of Event	Primary Direction of Travel
21	Deerfoot Trail NE & 16 Avenue NE	Rear End	N
13	Deerfoot Trail NE & 32 Avenue NE	Rear End	N
11	Deerfoot Trail SE & 17 Avenue SE	Rear End	E
10	Deerfoot Trail NE & McKnight Boulevard NE	Rear End	N
9	Anderson Road SW & 14 Street SW	Rear End	S
9	Glenmore Trail SW & 14 Street SW	Rear End	W
8	Crowchild Trail NW & Kensington Road NW	Rear End	S
8	Deerfoot Trail SE & Memorial Drive SE	Rear End	E

Source: Static data; PIMS (April 2014)

When interpreting these data, it is imperative to consider that these figures represent only the number of collisions and they do not account for associated traffic volumes, weather conditions, collision types, driver experience, or any other variables which may or may not be significant factors. The locations denoted might be associated with intersections, on/off ramps, or mid-block locations, which are in close proximity but not necessarily at the exact specified locations. Collisions occurring on private property, such as shopping mall parking lots have been excluded from the data in order to strictly assess intersection related collisions.

NOTE: This table excludes reports made through the e-Collision reporting system.

Calgary Crime Statistics - CUMULATIVE NUMBERS

MARCH 2015

<i>PERSON CRIMES</i>	Current Month			Year To Date			Accumulated To Date		
	Number Of Offences			Number Of Offences			Percentage Cleared		
	2013	2014	2015	2013	2014	2015	2013	2014	2015
Homicide									
1st Degree	1	0	1	1	4	5	100.0%	25.0%	40.0%
2nd Degree	1	1	0	5	2	1	100.0%	50.0%	0.0%
Manslaughter	0	0	0	0	1	1	-	0.0%	100.0%
Infanticide	0	0	0	0	0	0	-	-	-
TOTAL	2	1	1	6	7	7	100.0%	28.6%	42.9%
Other Offences Causing Death									
Criminal Negligence	0	0	0	0	0	0	-	-	-
Other Offences Causing Death	0	0	0	0	0	0	-	-	-
TOTAL	0	0	0	0	0	0	-	-	-
Attempted Homicide									
Attempted Murder	0	1	0	0	1	4	-	100.0%	0.0%
Conspiracy To Commit	0	0	0	0	0	0	-	-	-
TOTAL	0	1	0	0	1	4	-	100.0%	0.0%
Sex Offences									
Level 3 Aggravated Sexual Assault	0	1	0	0	1	0	-	0.0%	-
Level 2 Weapon/Threat/Bodily Harm	0	1	0	1	3	1	100.0%	33.3%	100.0%
Level 1 Sexual Assault	42	32	38	133	114	128	30.8%	28.1%	19.5%
Indecent Acts	7	7	14	20	21	25	50.0%	47.6%	24.0%
Other	16	9	4	30	37	11	53.3%	37.8%	54.5%
TOTAL	65	50	56	184	176	165	37.0%	32.4%	23.0%
Robbery									
Financial	3	0	6	4	8	8	25.0%	87.5%	87.5%
Commercial	20	13	24	55	47	63	49.1%	38.3%	11.1%
Person	63	41	51	166	126	143	23.5%	23.8%	24.5%
Home Invasion	8	3	3	16	14	20	12.5%	28.6%	25.0%
Robbery of Firearm	0	0	0	0	0	0	-	-	-
TOTAL	94	57	84	241	195	234	28.6%	30.3%	23.1%
Assault									
Level 3 - Aggravated	17	12	9	38	34	23	68.4%	70.6%	52.2%
Level 2 - Weapon/Bodily Harm	115	92	124	314	300	361	63.4%	62.0%	59.3%
Level 1 - Common Assault	328	345	365	890	1035	1018	73.4%	70.1%	71.7%
Assault Police Officer	20	20	16	56	44	51	98.2%	100.0%	100.0%
Discharge Firearm with Intent	5	0	0	6	7	0	0.0%	0.0%	-
Other Assaults	5	1	4	7	4	11	100.0%	75.0%	72.7%
TOTAL	490	470	518	1311	1424	1464	71.7%	69.0%	69.3%
Miscellaneous Person Crimes									
Kidnapping/Abduction	3	2	0	6	8	2	33.3%	37.5%	0.0%
Forcible Confinement	8	8	7	32	26	23	75.0%	84.6%	69.6%
Extortion	4	3	4	7	9	38	57.1%	55.6%	10.5%
Criminal Harassment	22	16	14	69	49	57	62.3%	59.2%	50.9%
Indecent/Harassing Calls	3	6	1	12	12	12	16.7%	16.7%	41.7%
TOTAL	40	35	26	126	104	132	59.5%	58.7%	40.9%
TOTAL PERSON CRIMES	691	614	685	1868	1907	2006	62.0%	61.0%	58.0%

Calgary Crime Statistics - CUMULATIVE NUMBERS

MARCH 2015

<i>PROPERTY CRIMES</i>	Current Month			Year To Date			Accumulated To Date		
	Number Of Offences			Number Of Offences			Percentage Cleared		
	2013	2014	2015	2013	2014	2015	2013	2014	2015
Break and Enter									
Residential	174	168	241	477	530	665	23.5%	16.6%	7.5%
Commercial	178	228	287	487	532	828	13.1%	17.3%	6.5%
Other B&E	65	80	140	209	220	348	10.5%	16.8%	6.9%
Unlawfully in Residence	7	4	3	9	11	9	88.9%	72.7%	77.8%
B&E Firearms	0	0	1	0	0	1	-	-	0.0%
TOTAL	424	480	672	1182	1293	1851	17.4%	17.4%	7.3%
Theft									
Theft Over	25	30	20	58	62	61	17.2%	11.3%	13.1%
Theft Under	490	532	536	1417	1475	1506	12.1%	11.1%	8.3%
Possession Stolen Property	92	66	110	235	225	324	100.0%	100.0%	100.0%
From Vehicle Over	10	2	9	23	9	25	4.3%	11.1%	0.0%
From Vehicle Under	587	424	979	1688	1367	2520	3.7%	4.0%	2.2%
Shoplift Over	0	0	1	2	3	4	0.0%	33.3%	0.0%
Shoplift Under	301	316	417	880	962	1187	72.6%	74.0%	67.2%
TOTAL	1505	1370	2072	4303	4103	5627	26.0%	28.4%	23.3%
Vehicle Theft									
Theft Over	389	270	581	986	875	1535	9.5%	10.3%	7.1%
Theft Under	48	43	137	120	130	351	17.5%	23.1%	11.1%
Attempted	20	7	31	32	25	73	0.0%	0.0%	0.0%
TOTAL	457	320	749	1138	1030	1959	10.1%	11.7%	7.6%
Fraud Related									
False Pretences	4	3	1	14	6	1	78.6%	66.7%	0.0%
Forgery/Uttering	34	32	22	109	105	84	81.7%	59.0%	66.7%
Forgery-Credit Card	27	30	21	62	86	68	35.5%	23.3%	5.9%
Impersonation	39	43	26	101	123	96	65.3%	37.4%	55.2%
Food/Lodging/Transportation	26	19	29	63	64	73	55.6%	62.5%	63.0%
Defraud Person (Under/Over)	133	155	134	425	437	367	41.2%	32.0%	21.3%
Other Fraud	15	11	12	27	38	31	66.7%	55.3%	54.8%
TOTAL	278	293	245	801	859	720	51.9%	38.8%	35.3%
Other Property Crimes									
Mischief Over \$5,000	6	7	10	15	24	25	20.0%	25.0%	24.0%
Mischief Under \$5,000	256	225	226	649	632	621	27.1%	29.0%	21.4%
Other Mischief	97	96	80	259	266	217	85.3%	84.6%	74.2%
Vehicle Damage	193	174	279	621	566	714	8.1%	8.7%	6.3%
Arson	6	14	20	30	30	45	20.0%	23.3%	26.7%
TOTAL	558	516	615	1574	1518	1622	29.0%	31.0%	22.0%
TOTAL PROPERTY CRIMES	3222	2979	4353	8998	8803	11779	25.7%	26.2%	18.8%

Calgary Crime Statistics - CUMULATIVE NUMBERS

MARCH 2015

<i>OTHER CRIMINAL CODE</i>	Current Month			Year To Date			Accumulated To Date		
	Number Of Offences			Number Of Offences			Percentage Cleared		
	2013	2014	2015	2013	2014	2015	2013	2014	2015
Vice									
Impede/Communicate	18	0	0	29	1	0	100.0%	100.0%	-
Live on Avails	0	0	0	3	1	0	100.0%	100.0%	-
Bawdy House	0	0	0	2	1	0	100.0%	100.0%	-
Procure/Solicit	2	2	4	5	5	5	80.0%	80.0%	20.0%
TOTAL	20	2	4	39	8	5	97.4%	87.5%	20.0%
Gaming									
Gaming House	0	0	0	0	0	0	-	-	-
Betting	0	0	0	0	0	0	-	-	-
Lotteries/Games	0	0	0	0	0	0	-	-	-
Other	0	0	0	0	1	0	-	100.0%	-
TOTAL	0	0	0	0	1	0	-	100.0%	-
Weapon Related									
Prohibited	18	16	14	41	44	40	100.0%	100.0%	100.0%
Restricted	28	14	19	55	48	75	100.0%	100.0%	100.0%
Explosives	0	0	0	1	0	0	100.0%	-	-
Possess Prohibited	0	0	0	0	0	0	-	-	-
Use Firearm in Offence	0	0	0	2	1	0	100.0%	100.0%	-
FAC Related	8	7	10	19	18	40	100.0%	100.0%	100.0%
Other	57	30	33	150	93	117	98.7%	97.8%	98.3%
TOTAL	111	67	76	268	204	272	99.3%	99.0%	99.3%
Miscellaneous									
Counterfeiting	13	10	41	43	40	129	2.3%	2.5%	15.5%
Obstruct Peace Officer	59	61	55	138	135	152	97.8%	100.0%	98.0%
Bail Violation/Fail to attend	229	331	286	748	881	881	100.0%	100.0%	99.9%
Fail to comply with Probation	67	46	64	163	132	171	100.0%	100.0%	99.4%
Escape Custody/UAL	17	10	20	50	29	46	100.0%	96.6%	97.8%
Attempt to commit/accessory	1	1	5	5	4	10	100.0%	75.0%	50.0%
Miscellaneous	140	137	133	388	387	382	75.3%	73.9%	72.3%
TOTAL	526	596	604	1535	1608	1771	90.8%	91.2%	87.2%
TOTAL OTHER CRIMINAL CODE	657	665	684	1842	1821	2048	92.2%	92.0%	88.7%
TOTAL CRIMINAL CODE (EXCL. TRAFFIC)	4570	4258	5722	12708	12531	15833	40.7%	41.1%	32.8%

Calgary Crime Statistics - CUMULATIVE NUMBERS

MARCH 2015

<i>SELECTED OTHER</i>	Current Month			Year To Date			Accumulated To Date		
	Number Of Offences			Number Of Offences			Percentage Cleared		
	2013	2014	2015	2013	2014	2015	2013	2014	2015
Criminal Code Traffic									
Impaired Causing Death	0	0	0	0	0	0	-	-	-
Impaired Causing Bodily Harm	1	0	2	2	0	2	100.0%	-	50.0%
Impaired > .08	113	77	66	305	248	192	100.0%	100.0%	100.0%
Impaired Driving	144	102	102	384	312	273	99.7%	100.0%	100.0%
Fail/Refuse	37	39	43	101	87	95	100.0%	100.0%	100.0%
Dangerous Causing Death	0	0	0	1	0	0	100.0%	-	-
Dangerous Operation Causing Harm	1	0	1	2	0	1	100.0%	-	100.0%
Dangerous Operation of Motor Vehicle.....	17	14	15	38	36	36	97.4%	100.0%	100.0%
Impaired Driving (Drugs)	0	0	0	1	0	0	100.0%	-	-
TOTAL	313	232	229	834	683	599	99.8%	100.0%	99.8%
Drugs									
CDSA/NCA/FDA Possession	88	101	81	236	287	235	100.0%	100.0%	100.0%
CDSA/NCA/FDA Trafficking	13	8	12	41	45	38	100.0%	100.0%	100.0%
CDSA/NCA/FDA Possession for Purpose	45	32	47	114	102	137	100.0%	100.0%	100.0%
CDSA/NCA Importation/Export	0	0	0	0	0	0	-	-	-
CDSA/NCA Cultivation/Production	4	1	2	10	6	6	100.0%	100.0%	100.0%
CDSA/NCA/FDA Prop./Proc. from Trafficking	0	0	0	0	0	0	-	-	-
TOTAL	150	142	142	401	440	416	100.0%	100.0%	100.0%
Selected Non Criminal Code Incidents									
Accidental/Sudden Death.....	77	73	55	205	180	181	N/A	N/A	N/A
Missing Persons	271	185	220	665	571	663	N/A	N/A	N/A
Court Order	122	102	134	311	294	352	N/A	N/A	N/A
Domestic Information.....	1102	1042	1127	3094	3060	3236	N/A	N/A	N/A
Domestic Information Standby	78	61	76	252	186	226	N/A	N/A	N/A
TOTAL	1650	1463	1612	4527	4291	4658	N/A	N/A	N/A
Statutes									
Federal	36	32	26	90	89	68	100.0%	100.0%	100.0%
Provincial	52	30	39	138	105	127	100.0%	98.1%	99.2%
Municipal	5	8	2	28	20	16	100.0%	100.0%	100.0%
TOTAL	93	70	67	256	214	211	100.0%	99.1%	99.5%
TOTAL SELECTED OTHER	2206	1907	2050	6018	5628	5884	99.9%	99.9%	99.8%