

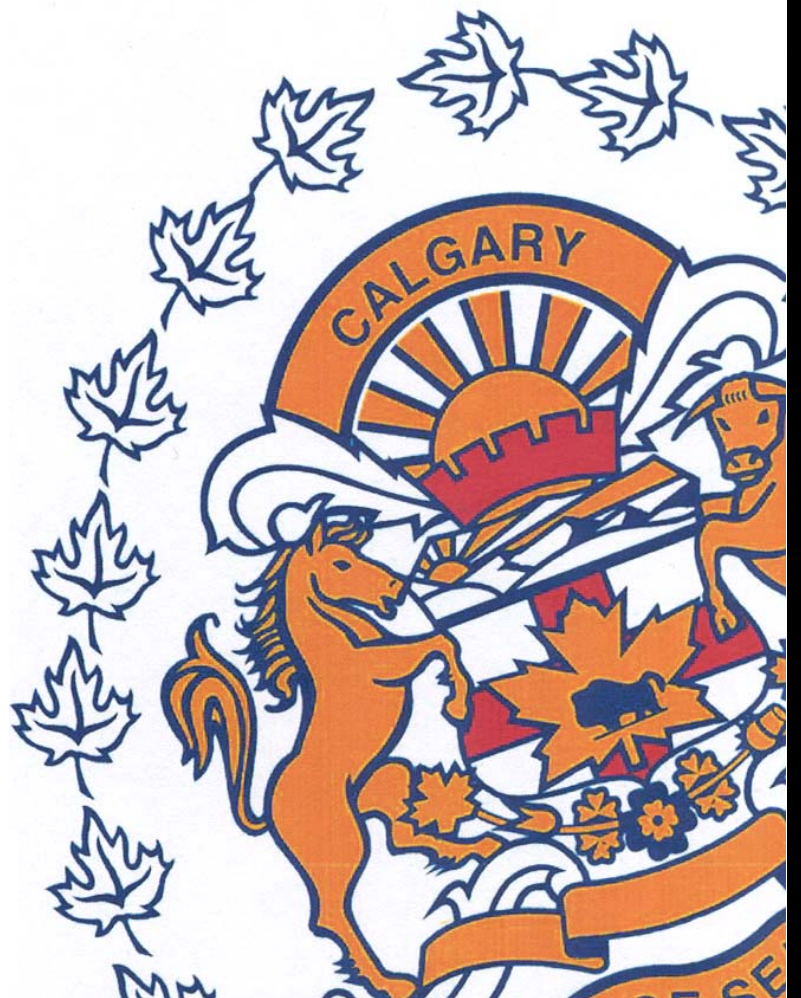
JUNE

Monthly Statistical

REPORT

2015

Compiled by: Centralized Analysis Unit
Crime and Intelligence Analytical Section
Strategic Services Division
© Calgary Police Service 2015



The Calgary Police Service provides this information in good faith but it provides no warranty, nor accepts any liability arising from any incorrect, incomplete or misleading information.

TABLE OF CONTENTS

	<i>Page</i>
Monthly Highlights - STATIC NUMBER COMPARISON	1
Calgary Crime Statistics – STATIC NUMBERS	
Person Crimes	2
Property Crimes	3
Other Criminal Code/Selected Other/Drug Offences	4
Calgary Traffic Collisions – CUMULATIVE NUMBERS	5
Calgary Crime Statistics - CUMULATIVE NUMBERS	6

REPORT NOTES

Most of the statistical data in this report are derived from the Police Information Management System (PIMS) and compiled by the Centralized Analysis Unit. The numbers reported may change on a daily basis due to the dynamic nature of offences being reported and cleared. Disorder data is derived from the CAD system and is static.

To a large extent, the data in this report are based on accumulated to date information. ***(Except for the Monthly Highlights which are based on static information (i.e.: a snap-shot in time).***

- For offences based on accumulated to date information, the number of offences recorded may be higher than previously reported (i.e. in previous statistical reports) due to late reporting. Although this does not greatly affect the number of occurrences for all offences, for some categories it may be as high as a 30-40% increase. The published data for the current period can therefore be expected to increase as time passes. As a result, readers should exercise caution when making comparisons between historical data and current data (i.e. previous year to this year) as data for the historic period will now include late reported offences, but data for the current period will not at this time. To achieve an effective comparison, current data should be evaluated against the originally published data for the historic period.
- Likewise, late reporting affects the number and percentage of offences cleared. Cases are often cleared months and sometimes years later. Consequently, clearances for previous years may appear to be much higher than those of the present year. Cases “cleared by charge” and those “cleared otherwise” are included in these totals.
- For offences based on “static” or “snap-shot” information, data totals will only reflect the number of offences reported in the original publication. They are not updated. Although late reporting may occur, and offences may continue to be cleared as time passes, these new events are not taken into account when preparing this statistical report.

A single incident may result in multiple offences, with each unique *Criminal Code* violation within the incident being counted as an offence. Furthermore, person crime offences are typically counted by the number of victims. Please note that offences are assigned to the month in which the offence "started", not the month they were reported or cleared. Also note that “attempted” incidents are included in these totals. For a more detailed explanation of the Offence counting procedure, please contact the Centralized Analysis Unit.

Monthly Highlights – STATIC NUMBER COMPARISON

To reduce the impact of late reporting, comments on this page are a comparison between the CPS June 2015 Statistical Report and the CPS June 2014 Statistical Report. To achieve an effective comparison, current data should be evaluated against the originally published data for the historic period.

JUNE 2015

PERSON CRIME

- ◆ Reported **person crimes** for the month of June 2015 remained comparable with June 2014, decreasing 0.1% (681 offences in June 2015 vs. 682 in June 2014).
- ◆ Total **robbery** offences for the month of June 2015 increased 2.4% when compared to June 2014 (85 offences in June 2015 vs. 83 in June 2014); During the month of June 2015 there were:
 - 10 **financial robberies** (compared to 4 in June 2014);
 - 18 **commercial robberies** (compared to 20 in June 2014);
 - 49 **person robberies** (compared to 56 in June 2014) and
 - 8 **home invasions** (compared to 3 in June 2014).
- ◆ **Assaults** decreased 3.1% this month (493 offences in June 2015 vs. 509 in June 2014).
- ◆ **Sex offences** increased slightly, 1.6% this month (64 **sex offences** in June 2015 compared to 63 in June 2014).

PROPERTY CRIME

- ◆ Reported **property crimes** this month increased 33.0% when compared to June 2014 (4490 offences in June 2015 compared to 3375 in June 2014).
- ◆ **Vehicle theft** (including attempts) increased 66.2% this month when compared to June 2014 (660 offences in June 2015 vs. 397 in June 2014).
- ◆ **Theft** offences increased 30.8% this month when compared to June 2014 (2232 offences in June 2015 vs. 1706 in June 2014).
- ◆ **Break and enter** offences this month increased 55.7% when compared to June 2014 (802 offences this month compared to 515 in June 2014).
 - **Residential break and enter** offences this month increased 42.0% when compared to June 2014 (328 offences in June 2015 vs. 231 in June 2014); and
 - **Commercial break and enter** offences increased 82.2% this month when compared to June 2014 (277 offences in June 2015 vs. 152 in June 2014).
- ◆ **Fraud related** offences increased 33.5% this month (215 offences in June 2015 vs. 161 in June 2014).

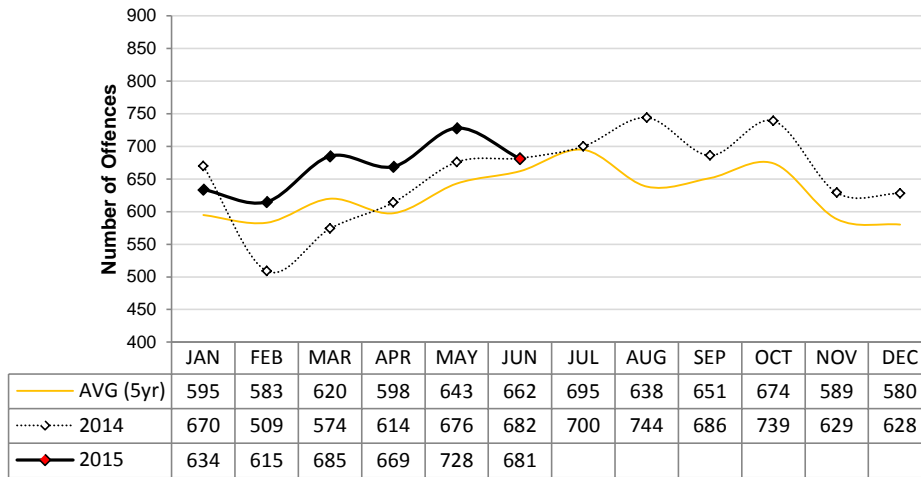
Calgary Person Crime Statistics – STATIC NUMBERS

The static crime numbers on this page are derived from historical Calgary Police Service Monthly Statistical Reports. These statistics are used when writing the Monthly Highlights page in order to make a fair comparison using data which has not been allowed to increase due to late reporting of crime. Using static numbers allows us to compare crime levels at a specific point in time and make an accurate determination of increases or decreases. The cumulative crime numbers (pages 7 – 10) are statistics derived from the CPS Police Information Management System. P.I.M.S. cannot produce static numbers and therefore the cumulative numbers reflect any late reporting of crime. To achieve an effective comparison, current data should be evaluated against the originally published data for the historic period. *Due to the dynamic nature of ongoing homicide investigations these numbers may have been manually updated to reflect the current homicide count. Due to manually updating, it's possible 1 or more homicides may be reflected within the assault category. The homicide counts are provided by the homicide unit.

JUNE 2015

	Current Month Number Of Offences			Year To Date Number Of Offences			
	2014	2015	% Change (2014-2015)	2014	2015	% Change (2014-2015)	% Cleared 2015
PERSON CRIMES							
Homicide*	1	1	0.0%	15	11	-26.7%	45.5%
Other Offences Causing Death	0	1	N/A	0	1	N/A	100.0%
Attempted Homicide	0	0	N/A	3	6	100.0%	16.7%
Sex Offences	63	64	1.6%	353	372	5.4%	32.0%
Robbery:							
Financial	4	10	150.0%	17	20	17.6%	55.0%
Commercial	20	18	-10.0%	100	132	32.0%	25.0%
Person	56	49	-12.5%	292	280	-4.1%	27.9%
Home Invasion	3	8	166.7%	26	43	65.4%	16.3%
Total Robbery	83	85	2.4%	435	475	9.2%	27.2%
Assault:							
Level 3 - Aggravated	10	3	-70.0%	60	47	-21.7%	61.7%
Level 2 - Weapon/Bodily Harm	109	113	3.7%	642	745	16.0%	57.9%
Level 1 - Common Assault	379	362	-4.5%	2114	2202	4.2%	71.2%
Assault Police Officer	9	12	33.3%	77	102	32.5%	98.0%
Discharge Firearm with Intent	0	1	N/A	9	4	-55.6%	50.0%
Other Assaults	2	2	0.0%	8	23	187.5%	87.0%
Total Assault	509	493	-3.1%	2910	3123	7.3%	68.8%
Misc Person Crimes	26	37	42.3%	198	259	30.8%	45.9%
TOTAL PERSON CRIMES	682	681	-0.1%	3914	4247	8.5%	59.4%

**Person Crime-Static Numbers
YTD Jan 01 to June 30 2015**



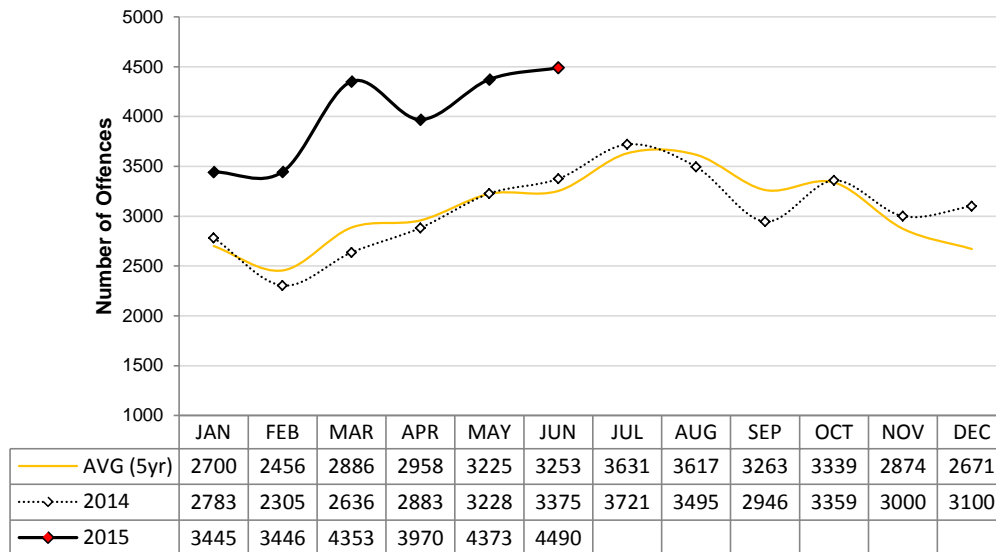
Calgary Property Crime Statistics – STATIC NUMBERS

The static crime numbers on this page are derived from historical Calgary Police Service Monthly Statistical Reports. These statistics are used when writing the Monthly Highlights page in order to make a fair comparison using data which has not been allowed to increase due to late reporting of crime. Using static numbers allows us to compare crime levels at a specific point in time and make an accurate determination of increases or decreases. The cumulative crime numbers (pages 7 – 10) are statistics derived from the CPS Police Information Management System. P.I.M.S. cannot produce static numbers and therefore the cumulative numbers reflect any late reporting of crime. To achieve an effective comparison, current data should be evaluated against the originally published data for the historic period.

JUNE 2015

	Current Month			Year To Date			
	Number Of Offences			Number Of Offences			
	2014	2015	% Change (2014-2015)	2014	2015	% Change (2014-2015)	% Cleared 2015
PROPERTY CRIMES							
Break and Enter:							
<i>Residential B&E</i>	231	328	42.0%	1200	1573	31.1%	8.8%
<i>Commercial B&E</i>	152	277	82.2%	1010	1748	73.1%	6.6%
<i>Other B&E</i>	126	195	54.8%	583	879	50.8%	4.4%
<i>Unlawfully in Residence</i>	6	2	-66.7%	24	20	-16.7%	70.0%
Total Break and Enter	515	802	55.7%	2817	4220	49.8%	7.3%
Theft	1706	2232	30.8%	8955	12489	39.5%	22.2%
Vehicle Theft (including attempts)	397	660	66.2%	2146	3915	82.4%	8.3%
Fraud Related	161	215	33.5%	1397	1632	16.8%	31.5%
Other Property Crimes	596	581	-2.5%	3178	3571	12.4%	22.4%
TOTAL PROPERTY CRIMES	3375	4490	33.0%	18493	25827	39.7%	18.2%

**Property Crime-Static Numbers
YTD Jan 01 to June 30 2015**



Calgary Other Crime Statistics – STATIC NUMBERS

The static crime numbers on this page are derived from historical Calgary Police Service Monthly Statistical Reports. These statistics are used when writing the Monthly Highlights page in order to make a fair comparison using data which has not been allowed to increase due to late reporting of crime. Using static numbers allows us to compare crime levels at a specific point in time and make an accurate determination of increases or decreases. The cumulative crime numbers (pages 7 – 10) are statistics derived from the CPS Police Information Management System. P.I.M.S. cannot produce static numbers and therefore the cumulative numbers reflect any late reporting of crime. To achieve an effective comparison, current data should be evaluated against the originally published data for the historic period.

JUNE 2015

	Current Month Number Of Offences			Year To Date Number Of Offences			% Cleared 2015
	2014	2015	% Change (2014-2015)	2014	2015	% Change (2014-2015)	
OTHER CRIMINAL CODE							
Vice	23	0	-100.0%	54	6	-88.9%	16.7%
Gaming	0	0	N/A	1	0	-100.0%	N/A
Weapon Related	49	56	14.3%	440	533	21.1%	99.1%
Misc	512	510	-0.4%	3203	3479	8.6%	86.1%
TOTAL OTHER CRIMINAL CODE	584	566	-3.1%	3698	4018	8.7%	87.7%
TOTAL OVERALL CRIMINAL CODE (excluding traffic)	4641	5737	23.6%	26105	34092	30.6%	31.6%
SELECTED OTHER							
Criminal Code Traffic	205	131	-36.1%	1358	1076	-20.8%	99.9%
Drugs	151	95	-37.1%	1006	732	-27.2%	100.0%
Selected Non Criminal Code:							
<i>Accidental/Sudden Death</i>	55	50	-9.1%	346	369	6.6%	N/A
<i>Missing Persons</i>	307	316	2.9%	1340	1534	14.5%	N/A
<i>Court Order</i>	89	120	34.8%	568	717	26.2%	N/A
<i>Domestic Information</i>	1074	1150	7.1%	6111	6717	9.9%	N/A
<i>Domestic Information Standby</i>	67	72	7.5%	378	482	27.5%	N/A
Total Selected Non Criminal Code	1592	1708	7.3%	8743	9819	12.3%	N/A
Statutes (Federal/Provincial/Municipal)	65	59	-9.2%	420	430	2.4%	99.1%

Number of Drug Offences Year To Date

	2011	2012	2013	2014	2015	Trend	
Demand	460	492	505	591	425		
Supply	442	435	310	415	307		
Total	902	927	815	1006	732		
	Drug Type						
	Cannabis	582	532	506	568	335	
	Cocaine/Crack	235	325	236	325	232	
	Heroin	14	10	11	23	45	
	All Other Drugs	71	60	62	90	120	
	Total	902	927	815	1006	732	

Calgary Traffic Collisions – CUMULATIVE NUMBERS

JUNE 2015

	Current Month # of Collisions			Year To Date # of Collisions			Year To Date Rate per 100,000 population		
	2013	2014	2015	2013	2014	2015	2013	2014	2015
Fatal Collisions	3	0	4	17	13	11	1.5	1.1	0.9
Injury Collisions	234	260	188	1272	1365	1209	110.7	114.2	101.2
Property Damage Collisions	3158	3311	2891	19506	21993	19972	1696.8	1840.1	1671.0
e-Collision Reports*	34	17	316	172	126	697	15.0	10.5	58.3
Total Collisions	3429	3588	3399	20967	23497	21889	1823.9	1966.0	1831.4
<i>Parking Lot Collisions</i>	789	706	578	4440	4411	4004	386.2	369.1	335.0
Total Reportable Collisions	2640	2882	2821	16527	19086	17885	1437.7	1596.9	1496.4

Source: Cumulative data; PIMS (July 2015)

NOTE: Total Reportable Collisions exclude collisions along private roadways or public parking lots.

The number of reported traffic collisions may continue to increase over time. Due to data collection and reporting methods, totals for the current month may not be comparable to previous years.

* e-Collision reporting is a data system which became operational in July 2009. At the time this report was published it was not possible to separate all collisions based on level of severity or to determine whether they occurred in a parking lot. Therefore, as e-Collision reports are completed and entered into the CPS records management system, it is determined whether or not they are reportable, and they are removed from the e-Collision count total and reclassified based on level of severity.

Top Collision Locations and Primary Cause of Events

Number of Collisions	Location	Primary Cause of Event	Primary Direction of Travel
33	Deerfoot Trail SE & Glenmore Trail SE	Rear End	S
17	Deerfoot Trail NE & Memorial Drive E	Rear End	E
17	Deerfoot Trail NE & 16 Avenue NE	Rear End	S
15	Deerfoot Trail NE & 32 Avenue NE	Rear End	N
12	Deerfoot Trail SE & Southland Drive SE	Rear End	N
10	Anderson Road SW & 14 Street SW	Rear End	S
8	Acadia Drive SE & Anderson Road SE	Rear End	E
8	Deerfoot Trail NE & McKnight Boulevard NE	Rear End	N
8	Edmonton Trail NE & 16 Avenue NE	Rear End	N

Source: Static data; PIMS (July 2015)

When interpreting these data, it is imperative to consider that these figures represent only the number of collisions and they do not account for associated traffic volumes, weather conditions, collision types, driver experience, or any other variables which may or may not be significant factors. The locations denoted might be associated with intersections, on/off ramps, or mid-block locations, which are in close proximity but not necessarily at the exact specified locations. Collisions occurring on private property, such as shopping mall parking lots have been excluded from the data in order to strictly assess intersection related collisions.

NOTE: This table excludes reports made through the e-Collision reporting system.

Calgary Crime Statistics - CUMULATIVE NUMBERS

JULY 2015

PERSON CRIMES	Current Month			Year To Date			Accumulated To Date		
	Number Of Offences			Number Of Offences			Percentage Cleared		
	2013	2014	2015	2013	2014	2015	2013	2014	2015
Homicide									
1st Degree	0	1	1	5	12	5	80.0%	66.7%	60.0%
2nd Degree	3	2	1	11	8	4	90.9%	87.5%	50.0%
Manslaughter	0	1	0	0	2	1	-	50.0%	100.0%
Infanticide	0	0	0	0	0	0	-	-	-
TOTAL	3	4	2	16	22	10	87.5%	72.7%	60.0%
Other Offences Causing Death									
Criminal Negligence	0	0	0	0	0	1	-	-	100.0%
Other Offences Causing Death	0	0	0	0	0	0	-	-	-
TOTAL	0	0	0	0	0	1	-	-	100.0%
Attempted Homicide									
Attempted Murder	1	0	1	5	3	7	80.0%	33.3%	14.3%
Conspiracy To Commit	0	0	0	4	0	0	100.0%	-	-
TOTAL	1	0	1	9	3	7	88.9%	33.3%	14.3%
Sex Offences									
Level 3 Aggravated Sexual Assault	1	0	0	2	2	0	50.0%	0.0%	-
Level 2 Weapon/Threat/Bodily Harm	0	0	0	4	5	3	100.0%	60.0%	66.7%
Level 1 Sexual Assault	55	57	42	334	312	309	27.8%	28.8%	26.5%
Indecent Acts	10	33	14	84	105	85	48.8%	41.9%	37.6%
Other	5	12	9	61	78	48	54.1%	48.7%	47.9%
TOTAL	71	102	65	485	502	445	35.5%	34.9%	31.2%
Robbery									
Financial	2	0	11	16	17	31	62.5%	70.6%	61.3%
Commercial	3	15	19	85	116	151	38.8%	38.8%	25.8%
Person	51	65	48	349	361	334	22.9%	23.0%	26.0%
Home Invasion	2	6	6	27	32	49	14.8%	21.9%	14.3%
Robbery of Firearm	0	0	0	0	0	0	-	-	-
TOTAL	58	86	84	477	526	565	26.6%	27.9%	26.9%
Assault									
Level 3 - Aggravated	6	5	10	77	67	58	75.3%	65.7%	58.6%
Level 2 - Weapon/Bodily Harm	140	139	151	825	807	901	61.3%	58.2%	57.0%
Level 1 - Common Assault	332	351	409	2137	2505	2624	71.7%	69.9%	71.0%
Assault Police Officer	31	18	29	133	95	132	98.5%	100.0%	97.0%
Discharge Firearm with Intent	0	0	0	10	10	4	40.0%	0.0%	50.0%
Other Assaults	0	4	4	10	13	27	100.0%	76.9%	88.9%
TOTAL	509	517	603	3192	3497	3746	70.2%	67.8%	68.5%
Miscellaneous Person Crimes									
Kidnapping/Abduction	1	1	3	18	18	10	38.9%	27.8%	40.0%
Forcible Confinement	13	17	8	68	77	59	79.4%	77.9%	74.6%
Extortion	3	3	3	17	27	54	64.7%	44.4%	14.8%
Criminal Harassment	26	21	14	168	118	144	61.9%	58.5%	50.7%
Indecent/Harassing Calls	1	2	4	24	21	33	29.2%	28.6%	42.4%
TOTAL	44	44	32	295	261	300	62.0%	58.2%	47.7%
TOTAL PERSON CRIMES	686	753	787	4474	4811	5074	61.4%	59.5%	59.3%

Calgary Crime Statistics - CUMULATIVE NUMBERS

JULY 2015

PROPERTY CRIMES	Current Month			Year To Date			Accumulated To Date		
	Number Of Offences			Number Of Offences			Percentage Cleared		
	2013	2014	2015	2013	2014	2015	2013	2014	2015
Break and Enter									
Residential	230	197	422	1261	1430	2013	20.1%	16.7%	10.3%
Commercial	145	124	290	1097	1164	2064	15.4%	17.0%	7.5%
Other B&E	119	112	169	621	717	1051	11.3%	16.6%	5.5%
Unlawfully in Residence	3	7	1	20	32	21	85.0%	84.4%	66.7%
B&E Firearms	0	0	0	0	1	2	-	0.0%	0.0%
TOTAL	497	440	882	2999	3344	5151	17.0%	17.4%	8.4%
Theft									
Theft Over	33	24	25	161	149	176	14.9%	11.4%	8.5%
Theft Under	751	764	791	3928	4161	4560	10.1%	10.6%	7.9%
Possession Stolen Property	0	4	5	10	19	25	100.0%	100.0%	100.0%
From Vehicle Over	12	14	17	60	43	72	3.3%	7.0%	0.0%
From Vehicle Under	859	900	1173	4608	4116	6752	3.8%	3.4%	2.1%
Shoplift Over	0	0	4	5	7	9	20.0%	28.6%	11.1%
Shoplift Under	302	312	343	2012	2335	2734	73.8%	73.4%	68.3%
TOTAL	1957	2018	2358	10784	10830	14328	19.4%	21.5%	16.8%
Vehicle Theft									
Theft Over	380	403	525	2434	2253	3623	9.0%	10.3%	7.3%
Theft Under	79	71	117	357	367	843	19.3%	19.9%	11.6%
Attempted	19	18	21	91	77	157	0.0%	2.6%	1.9%
TOTAL	478	492	663	2882	2697	4623	10.0%	11.4%	7.9%
Fraud Related									
False Pretences	2	4	0	19	17	14	73.7%	70.6%	57.1%
Forgery/Uttering	30	27	11	227	224	172	79.3%	59.4%	62.2%
Forgery-Credit Card	21	23	23	133	199	226	33.1%	26.6%	16.8%
Impersonation	23	63	54	204	309	295	63.7%	39.2%	46.8%
Food/Lodging/Transportation	20	18	25	140	134	181	54.3%	65.7%	60.8%
Defraud Person (Under/Over)	128	175	157	938	1044	1054	40.6%	29.5%	20.9%
Other Fraud	6	14	3	59	85	71	64.4%	52.9%	47.9%
TOTAL	230	324	273	1720	2012	2013	50.2%	37.8%	32.5%
Other Property Crimes									
Mischief Over \$5,000	11	8	12	39	59	61	20.5%	18.6%	18.0%
Mischief Under \$5,000	273	272	260	1696	1554	1561	30.9%	26.6%	21.3%
Other Mischief	156	97	100	785	638	626	84.7%	81.7%	75.1%
Vehicle Damage	361	334	319	1786	1663	1962	8.2%	8.4%	8.3%
Arson	16	31	19	100	118	127	21.0%	15.3%	18.1%
TOTAL	817	742	710	4406	4032	4337	31.0%	27.4%	23.0%
TOTAL PROPERTY CRIMES	3979	4016	4886	22791	22915	30452	22.5%	22.2%	16.0%

Calgary Crime Statistics - CUMULATIVE NUMBERS

JULY 2015

OTHER CRIMINAL CODE	Current Month			Year To Date			Accumulated To Date		
	Number Of Offences			Number Of Offences			Percentage Cleared		
	2013	2014	2015	2013	2014	2015	2013	2014	2015
Vice									
Impede/Communicate	0	1	0	29	48	0	100.0%	100.0%	-
Live on Avails	1	0	0	7	2	0	100.0%	100.0%	-
Bawdy House	3	0	0	6	3	0	100.0%	100.0%	-
Procure/Solicit	5	1	0	19	8	8	89.5%	75.0%	37.5%
TOTAL	9	2	0	61	61	8	96.7%	96.7%	37.5%
Gaming									
Gaming House	0	0	0	1	0	0	100.0%	-	-
Betting	0	0	0	0	0	0	-	-	-
Lotteries/Games	0	0	0	0	0	0	-	-	-
Other	0	0	0	0	1	0	-	100.0%	-
TOTAL	0	0	0	1	1	0	100.0%	100.0%	-
Weapon Related									
Prohibited	8	12	17	85	94	88	100.0%	100.0%	100.0%
Restricted	21	15	24	122	134	169	100.0%	100.0%	100.0%
Explosives	0	0	0	1	0	1	100.0%	-	0.0%
Possess Prohibited	0	0	0	0	0	0	-	-	-
Use Firearm in Offence	0	0	0	4	1	0	100.0%	100.0%	-
FAC Related	5	3	4	46	52	80	100.0%	100.0%	100.0%
Other	52	36	42	344	234	286	98.3%	98.3%	98.3%
TOTAL	86	66	87	602	515	624	99.0%	99.2%	99.0%
Miscellaneous									
Counterfeiting	5	41	50	97	148	346	3.1%	4.7%	15.6%
Obstruct Peace Officer	48	50	47	324	311	347	98.5%	99.0%	98.6%
Bail Violation/Fail to attend	271	367	318	1792	2104	2020	99.9%	100.0%	100.0%
Fail to comply with Probation	48	66	75	384	344	404	100.0%	100.0%	99.8%
Escape Custody/UAL	13	12	18	114	84	123	100.0%	98.8%	93.5%
Attempt to commit/accessory	1	0	5	14	14	22	100.0%	92.9%	63.6%
Miscellaneous	121	152	151	913	995	946	74.3%	71.6%	71.4%
TOTAL	507	688	664	3638	4000	4208	90.8%	89.3%	86.1%
TOTAL OTHER CRIMINAL CODE	602	756	751	4302	4577	4840	92.0%	90.5%	87.7%
TOTAL CRIMINAL CODE (EXCL. TRAFFIC)	5267	5525	6424	31567	32303	40366	37.5%	37.4%	30.0%

Calgary Crime Statistics - CUMULATIVE NUMBERS

JULY 2015

SELECTED OTHER	Current Month			Year To Date			Accumulated To Date		
	Number Of Offences			Number Of Offences			Percentage Cleared		
	2013	2014	2015	2013	2014	2015	2013	2014	2015
Criminal Code Traffic									
Impaired Causing Death	0	0	0	0	0	2	-	-	100.0%
Impaired Causing Bodily Harm	0	0	0	3	2	5	100.0%	100.0%	100.0%
Impaired > .08	89	76	62	640	571	420	100.0%	100.0%	100.0%
Impaired Driving	108	109	87	818	737	573	99.9%	100.0%	100.0%
Fail/Refuse	25	35	32	209	217	193	100.0%	100.0%	100.0%
Dangerous Causing Death	0	0	0	1	0	3	100.0%	-	100.0%
Dangerous Operation Causing Harm	1	2	0	6	3	3	100.0%	100.0%	100.0%
Dangerous Operation of Motor Vehicle	13	17	9	83	95	72	98.8%	100.0%	98.6%
Impaired Driving (Drugs)	0	0	0	1	0	0	100.0%	-	-
TOTAL	236	239	190	1761	1625	1271	99.9%	100.0%	99.9%
Drugs									
CDSA/NCA/FDA Possession	95	90	81	610	689	510	100.0%	100.0%	100.0%
CDSA/NCA/FDA Trafficking	41	15	7	128	199	65	100.0%	100.0%	100.0%
CDSA/NCA/FDA Possession for Purpose	62	34	33	287	262	278	100.0%	100.0%	100.0%
CDSA/NCA Importation/Export	0	0	1	1	0	1	100.0%	-	100.0%
CDSA/NCA Cultivation/Production	3	4	2	24	16	11	100.0%	100.0%	100.0%
CDSA/NCA/FDA Prop./Proc. from Trafficking	0	0	0	0	0	0	-	-	-
TOTAL	201	143	124	1050	1166	865	100.0%	100.0%	100.0%
Selected Non Criminal Code Incidents									
Accidental/Sudden Death	62	60	56	423	410	428	0.0%	0.0%	0.0%
Missing Persons	259	244	273	1796	1596	1809	0.0%	0.0%	0.0%
Court Order	152	107	108	773	676	832	0.0%	0.0%	0.0%
Domestic Information	1228	1181	1181	7626	7393	7915	0.0%	0.0%	0.0%
Domestic Information Standby	100	72	78	551	459	562	0.0%	0.0%	0.0%
TOTAL	1801	1664	1696	11169	10534	11546	0.0%	0.0%	0.0%
Statutes									
Federal	17	25	28	184	210	178	100.0%	100.0%	99.4%
Provincial	29	39	37	286	251	290	99.3%	98.8%	99.0%
Municipal	2	3	7	56	46	42	100.0%	100.0%	100.0%
TOTAL	48	67	72	526	507	510	99.6%	99.4%	99.2%
TOTAL SELECTED OTHER	2286	2113	2082	14506	13832	14192	23.0%	23.8%	18.6%