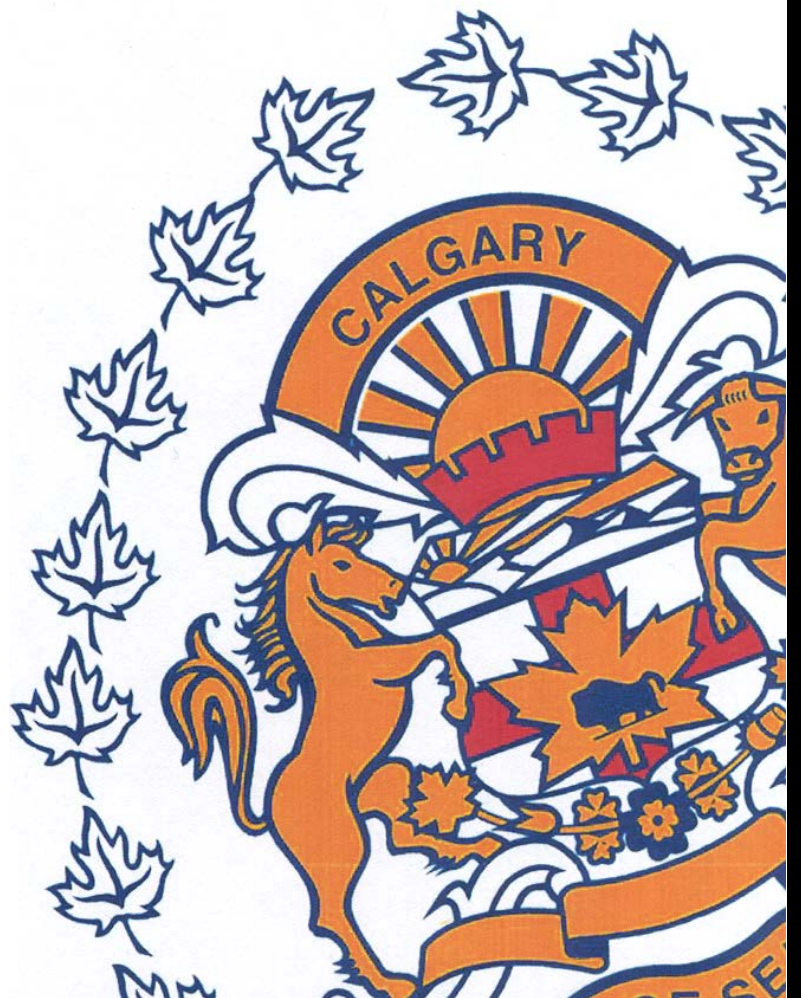


# SEPTEMBER

## Monthly Statistical REPORT 2015

Compiled by: Centralized Analysis Unit  
Crime and Intelligence Analytical Section  
Strategic Services Division  
© Calgary Police Service 2016



*The Calgary Police Service provides this information in good faith but it provides no warranty, nor accepts any liability arising from any incorrect, incomplete or misleading information.*

# TABLE OF CONTENTS

	<i>Page</i>
<b>Monthly Highlights - STATIC NUMBER COMPARISON</b>	<b>1</b>
<b>Calgary Crime Statistics – STATIC NUMBERS</b>	
<b>Person Crimes</b>	<b>2</b>
<b>Property Crimes</b>	<b>3</b>
<b>Other Criminal Code/Selected Other/Drug Offences</b>	<b>4</b>
<b>Calgary Traffic Collisions – CUMULATIVE NUMBERS</b>	<b>5</b>
<b>Calgary Crime Statistics - CUMULATIVE NUMBERS</b>	<b>6</b>

---

## REPORT NOTES

Most of the statistical data in this report are derived from the Police Information Management System (PIMS) and compiled by the Centralized Analysis Unit. The numbers reported may change on a daily basis due to the dynamic nature of offences being reported and cleared. Disorder data is derived from the CAD system and is static.

To a large extent, the data in this report are based on accumulated to date information. ***(Except for the Monthly Highlights which are based on static information (i.e.: a snap-shot in time).***

- For offences based on accumulated to date information, the number of offences recorded may be higher than previously reported (i.e. in previous statistical reports) due to late reporting. Although this does not greatly affect the number of occurrences for all offences, for some categories it may be as high as a 30-40% increase. The published data for the current period can therefore be expected to increase as time passes. As a result, readers should exercise caution when making comparisons between historical data and current data (i.e. previous year to this year) as data for the historic period will now include late reported offences, but data for the current period will not at this time. To achieve an effective comparison, current data should be evaluated against the originally published data for the historic period.
- Likewise, late reporting affects the number and percentage of offences cleared. Cases are often cleared months and sometimes years later. Consequently, clearances for previous years may appear to be much higher than those of the present year. Cases “cleared by charge” and those “cleared otherwise” are included in these totals.
- For offences based on “static” or “snap-shot” information, data totals will only reflect the number of offences reported in the original publication. They are not updated. Although late reporting may occur, and offences may continue to be cleared as time passes, these new events are not taken into account when preparing this statistical report.

A single incident may result in multiple offences, with each unique *Criminal Code* violation within the incident being counted as an offence. Furthermore, person crime offences are typically counted by the number of victims. Please note that offences are assigned to the month in which the offence "started", not the month they were reported or cleared. Also note that “attempted” incidents are included in these totals. For a more detailed explanation of the Offence counting procedure, please contact the Centralized Analysis Unit.

## Monthly Highlights – STATIC NUMBER COMPARISON

To reduce the impact of late reporting, comments on this page are a comparison between the CPS September 2015 Statistical Report and the CPS September 2014 Statistical Report. To achieve an effective comparison, current data should be evaluated against the originally published data for the historic period.

### SEPTEMBER 2015

#### PERSON CRIME

- ◆ Reported **person crimes** for the month of September 2015 increased 8.3% when compared to September 2014 (743 offences in September 2015 vs. 686 in September 2014). Person crimes were also 14.1% above the five year September average.
- ◆ Total **robbery** offences for the month of September 2015 increased 19.5% when compared to September 2014 (92 offences in September 2015 vs. 77 in September 2014); During September 2015 there were:
  - 2 **financial robberies** (compared to 5 in September 2014);
  - 38 **commercial robberies** (compared to 15 in September 2014);
  - 48 **person robberies** (compared to 50 in September 2014);and
  - 4 **home invasions** (compared to 7 in September 2014).
- ◆ **Assaults** remained exactly at par this month (525 offences in September 2015 vs. 525 in September 2014).
- ◆ **Sex offences** increased 47.8% this month (68 **sex offences** in September 2015 vs. 46 in September 2014).

#### PROPERTY CRIME

- ◆ Reported **property crimes** this month increased 50.3% when compared to September 2014 (4427 offences in September 2015 compared to 2946 in September 2014). Property crimes were also 35.7% above the five year September average.
- ◆ **Vehicle theft** (including attempts) significantly increased 82.7% when compared to September 2014 (614 offences in September 2015 vs. 336 in September 2014).
- ◆ **Theft** offences increased 47.5% this month when compared to September 2014 (2292 offences in September 2015 vs. 1554 in September 2014).
- ◆ **Break and enter** offences this month significantly increased, by 89.2% when compared to September 2014 (700 offences this month compared to 370 in September 2014).
  - **Residential break and enter** offences this month increased 65.5% when compared to September 2014 (278 offences in September 2015 vs. 168 in September 2014); and
  - **Commercial break and enter** offences increased 97.3% this month when compared to September 2014 (221 offences in September 2015 vs. 112 in September 2014).
- ◆ **Fraud related** offences increased 33.1% this month (209 offences in September 2015 vs. 157 in September 2014).

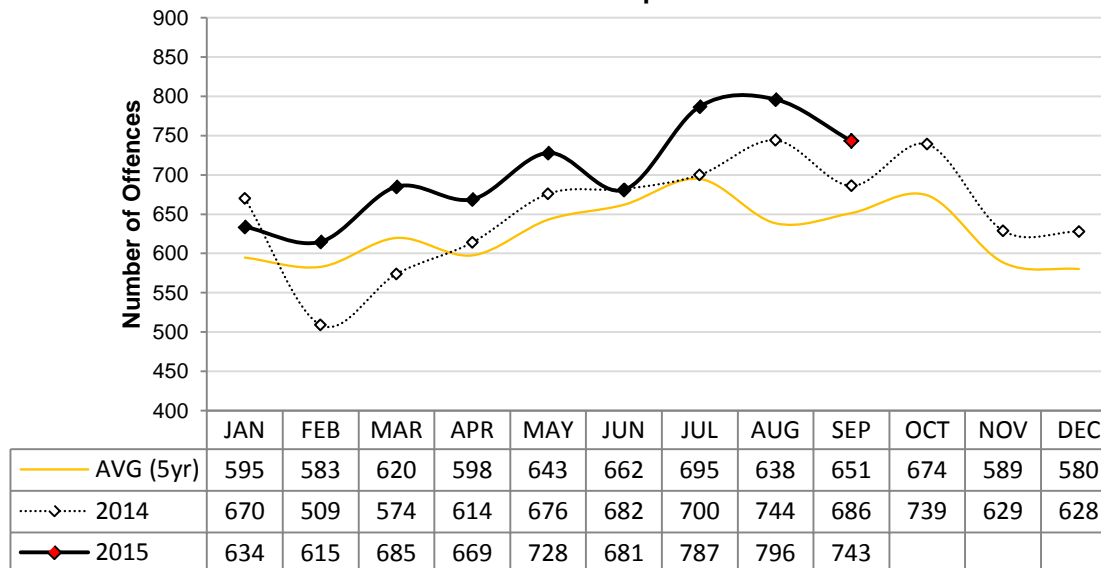
## Calgary Person Crime Statistics – STATIC NUMBERS

The static crime numbers on this page are derived from historical Calgary Police Service Monthly Statistical Reports. These statistics are used when writing the Monthly Highlights page in order to make a fair comparison using data which has not been allowed to increase due to late reporting of crime. Using static numbers allows us to compare crime levels at a specific point in time and make an accurate determination of increases or decreases. The cumulative crime numbers (pages 7 – 10) are statistics derived from the CPS Police Information Management System. P.I.M.S. cannot produce static numbers and therefore the cumulative numbers reflect any late reporting of crime. To achieve an effective comparison, current data should be evaluated against the originally published data for the historic period. \*Due to the dynamic nature of ongoing homicide investigations these numbers may have been manually updated to reflect the current homicide count. Due to manually updating, it's possible 1 or more homicides may be reflected within the assault category. The homicide counts are provided by the homicide unit.

### SEPTEMBER 2015

	Current Month Number Of Offences			Year To Date Number Of Offences			% Cleared 2015
	2014	2015	% Change (2014-2015)	2014	2015	% Change (2014-2015)	
<b>PERSON CRIMES</b>							
Homicide*	3	4	33.3%	26	22	-15.4%	54.5%
Other Offences Causing Death	0	0	N/A	0	1	N/A	100.0%
Attempted Homicide	0	2	N/A	4	9	125.0%	33.3%
Sex Offences	46	68	47.8%	586	619	5.6%	31.7%
<b>Robbery:</b>							
Financial	5	2	-60.0%	26	44	69.2%	79.5%
Commercial	15	38	153.3%	145	203	40.0%	25.6%
Person	50	48	-4.0%	462	443	-4.1%	25.1%
Home Invasion	7	4	-42.9%	42	57	35.7%	22.8%
<b>Total Robbery</b>	<b>77</b>	<b>92</b>	<b>19.5%</b>	<b>675</b>	<b>747</b>	<b>10.7%</b>	<b>28.2%</b>
<b>Assault:</b>							
Level 3 - Aggravated	11	7	-36.4%	81	77	-4.9%	57.1%
Level 2 - Weapon/Bodily Harm	128	136	6.3%	1063	1200	12.9%	57.9%
Level 1 - Common Assault	360	360	0.0%	3255	3434	5.5%	70.6%
Assault Police Officer	24	18	-25.0%	134	171	27.6%	98.2%
Discharge Firearm with Intent	0	0	N/A	12	6	-50.0%	33.3%
Other Assaults	2	4	100.0%	19	37	94.7%	89.2%
<b>Total Assault</b>	<b>525</b>	<b>525</b>	<b>0.0%</b>	<b>4564</b>	<b>4925</b>	<b>7.9%</b>	<b>68.4%</b>
Misc Person Crimes	35	52	48.6%	322	405	25.8%	49.1%
<b>TOTAL PERSON CRIMES</b>	<b>686</b>	<b>743</b>	<b>8.3%</b>	<b>6177</b>	<b>6728</b>	<b>8.9%</b>	<b>59.3%</b>

**Person Crime-Static Numbers  
YTD Jan 01 to Sep 30 2015**



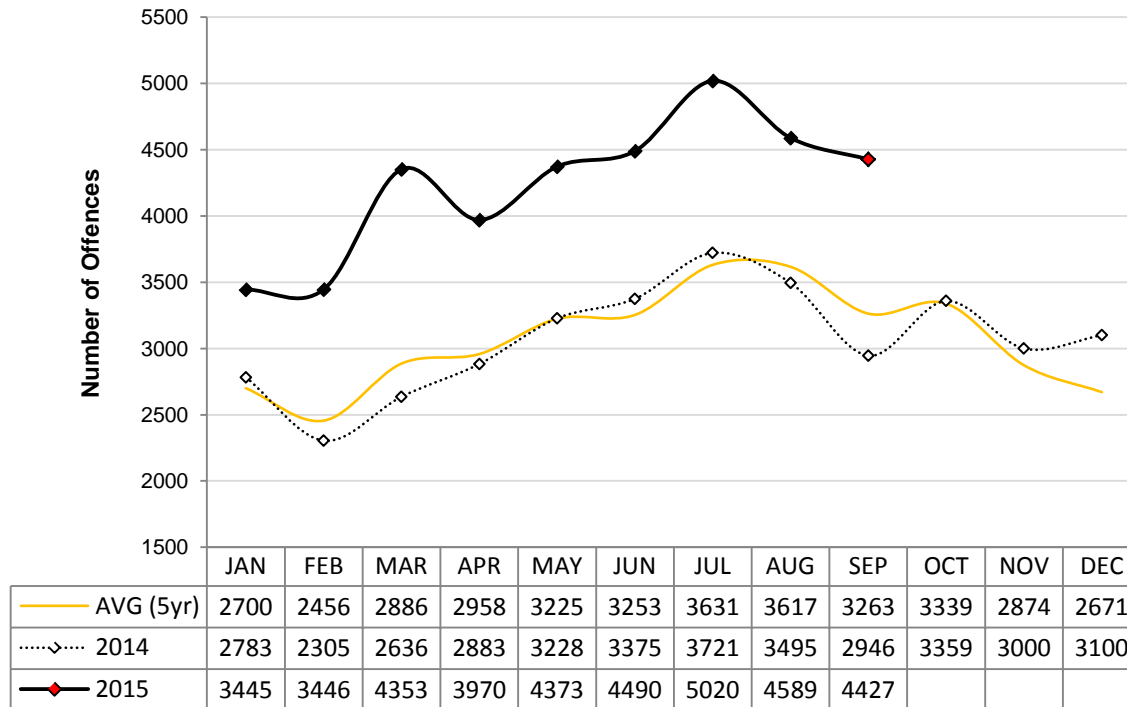
## Calgary Property Crime Statistics – STATIC NUMBERS

The static crime numbers on this page are derived from historical Calgary Police Service Monthly Statistical Reports. These statistics are used when writing the Monthly Highlights page in order to make a fair comparison using data which has not been allowed to increase due to late reporting of crime. Using static numbers allows us to compare crime levels at a specific point in time and make an accurate determination of increases or decreases. The cumulative crime numbers (pages 7 – 10) are statistics derived from the CPS Police Information Management System. P.I.M.S. cannot produce static numbers and therefore the cumulative numbers reflect any late reporting of crime. To achieve an effective comparison, current data should be evaluated against the originally published data for the historic period.

### SEPTEMBER 2015

	Current Month Number Of Offences			Year To Date Number Of Offences			% Cleared 2015
	2014	2015	% Change (2014-2015)	2014	2015	% Change (2014-2015)	
<b>PROPERTY CRIMES</b>							
<b>Break and Enter:</b>							
<i>Residential B&amp;E</i>	168	278	65.5%	1877	2639	40.6%	13.7%
<i>Commercial B&amp;E</i>	112	221	97.3%	1398	2666	90.7%	9.4%
<i>Other B&amp;E</i>	87	196	125.3%	891	1447	62.4%	4.9%
<i>Unlawfully in Residence</i>	3	5	66.7%	45	29	-35.6%	75.9%
<b>Total Break and Enter</b>	<b>370</b>	<b>700</b>	<b>89.2%</b>	<b>4211</b>	<b>6781</b>	<b>61.0%</b>	<b>10.4%</b>
<b>Theft</b>	<b>1554</b>	<b>2292</b>	<b>47.5%</b>	<b>14253</b>	<b>20185</b>	<b>41.6%</b>	<b>21.1%</b>
<b>Vehicle Theft (including attempts)</b>	<b>336</b>	<b>614</b>	<b>82.7%</b>	<b>3425</b>	<b>5913</b>	<b>72.6%</b>	<b>8.4%</b>
<b>Fraud Related</b>	<b>157</b>	<b>209</b>	<b>33.1%</b>	<b>2196</b>	<b>2754</b>	<b>25.4%</b>	<b>32.1%</b>
<b>Other Property Crimes</b>	<b>529</b>	<b>612</b>	<b>15.7%</b>	<b>5198</b>	<b>5809</b>	<b>11.8%</b>	<b>23.6%</b>
<b>TOTAL PROPERTY CRIMES</b>	<b>2946</b>	<b>4427</b>	<b>50.3%</b>	<b>29283</b>	<b>41442</b>	<b>41.5%</b>	<b>18.7%</b>

**Property Crime-Static Numbers  
YTD Jan 01 to Sep 31 2015**



## Calgary Other Crime Statistics – STATIC NUMBERS

The static crime numbers on this page are derived from historical Calgary Police Service Monthly Statistical Reports. These statistics are used when writing the Monthly Highlights page in order to make a fair comparison using data which has not been allowed to increase due to late reporting of crime. Using static numbers allows us to compare crime levels at a specific point in time and make an accurate determination of increases or decreases. The cumulative crime numbers (pages 7 – 10) are statistics derived from the CPS Police Information Management System. P.I.M.S. cannot produce static numbers and therefore the cumulative numbers reflect any late reporting of crime. To achieve an effective comparison, current data should be evaluated against the originally published data for the historic period.

### SEPTEMBER 2015

	Current Month Number Of Offences			Year To Date Number Of Offences			% Cleared 2015
	2014	2015	% Change (2014-2015)	2014	2015	% Change (2014-2015)	
<b>OTHER CRIMINAL CODE</b>							
Vice	1	0	-100.0%	58	11	-81.0%	27.3%
Gaming	0	0	N/A	1	0	-100.0%	N/A
Weapon Related	53	82	54.7%	638	798	25.1%	99.0%
Misc	454	610	34.4%	4987	5588	12.1%	85.8%
<b>TOTAL OTHER CRIMINAL CODE</b>	<b>508</b>	<b>692</b>	<b>36.2%</b>	<b>5684</b>	<b>6397</b>	<b>12.5%</b>	<b>87.3%</b>
<b>TOTAL OVERALL CRIMINAL CODE (excluding traffic)</b>	<b>4140</b>	<b>5862</b>	<b>41.6%</b>	<b>41144</b>	<b>54567</b>	<b>32.6%</b>	<b>25.6%</b>
<b>SELECTED OTHER</b>							
Criminal Code Traffic	212	182	-14.2%	2034	1654	-18.7%	99.9%
Drugs	103	111	7.8%	1409	1101	-21.9%	100.0%
<b>Selected Non Criminal Code:</b>							
<i>Accidental/Sudden Death</i>	63	50	-20.6%	521	530	1.7%	N/A
<i>Missing Persons</i>	295	286	-3.1%	2164	2388	10.4%	N/A
<i>Court Order</i>	102	136	33.3%	890	1083	21.7%	N/A
<i>Domestic Information</i>	1024	1131	10.4%	9552	10272	7.5%	N/A
<i>Domestic Information Standby</i>	72	94	30.6%	622	745	19.8%	N/A
<b>Total Selected Non Criminal Code</b>	<b>1556</b>	<b>1697</b>	<b>9.1%</b>	<b>13749</b>	<b>15018</b>	<b>9.2%</b>	<b>N/A</b>
<b>Statutes (Federal/Provincial/Municipal)</b>	<b>43</b>	<b>69</b>	<b>60.5%</b>	<b>601</b>	<b>656</b>	<b>9.2%</b>	<b>99.4%</b>

### Number of Drug Offences Year To Date

		2011	2012	2013	2014	2015	Trend
Demand		714	752	770	832	665	
Supply		712	612	529	577	436	
<b>Total</b>		<b>1426</b>	<b>1364</b>	<b>1299</b>	<b>1409</b>	<b>1101</b>	
	<b>Drug Type</b>						
	Cannabis	891	783	780	795	497	
	Cocaine/Crack	415	461	395	441	343	
	Heroin	17	20	27	34	69	
	All Other Drugs	103	100	97	139	192	
<b>Total</b>	<b>1426</b>	<b>1364</b>	<b>1299</b>	<b>1409</b>	<b>1101</b>		

# Calgary Traffic Collisions – CUMULATIVE NUMBERS

**SEPTEMBER 2015**

	Current Month # of Collisions			Year To Date # of Collisions			Year To Date Rate per 100,000 population		
	2013	2014	2015	2013	2014	2015	2013	2014	2015
Fatal Collisions	3	4	1	28	21	20	2.4	1.8	1.6
Injury Collisions	295	284	223	2063	2146	1938	178.4	179.6	157.4
Property Damage Collisions	3383	3670	2989	29250	31795	29883	2528.8	2660.2	2427.7
e-Collision Reports*	29	29	258	235	201	922	20.3	16.8	74.9
<b>Total Collisions</b>	<b>3710</b>	<b>3987</b>	<b>3471</b>	<b>31576</b>	<b>34163</b>	<b>32763</b>	<b>2729.9</b>	<b>2858.4</b>	<b>2661.7</b>
<i>Parking Lot Collisions</i>	750	745	494	6711	6609	6051	580.2	553.0	491.6
<b>Total Reportable Collisions</b>	<b>2960</b>	<b>3242</b>	<b>2977</b>	<b>24865</b>	<b>27554</b>	<b>26712</b>	<b>2149.7</b>	<b>2305.4</b>	<b>2170.1</b>

Source: Cumulative data; PIMS (October 2015)

NOTE: Total Reportable Collisions exclude collisions along private roadways or public parking lots.

The number of reported traffic collisions may continue to increase over time. Due to data collection and reporting methods, totals for the current month may not be comparable to previous years.

\* e-Collision reporting is a data system which became operational in July 2009. At the time this report was published it was not possible to separate all collisions based on level of severity or to determine whether they occurred in a parking lot. Therefore, as e-Collision reports are completed and entered into the CPS records management system, it is determined whether or not they are reportable, and they are removed from the e-Collision count total and reclassified based on level of severity.

## Top Collision Locations and Primary Cause of Events

Number of Collisions	Location	Primary Cause of Event	Primary Direction of Travel
21	Deerfoot Trail NE & 16 Avenue NE	Rear End	N
15	Deerfoot Trail NE & McKnight Boulevard NE	Rear End	N
14	Deerfoot Trail NE & Memorial Drive E	Rear End	S
14	Deerfoot Trail SE & Glenmore Trail SE	Rear End	S
11	Glenmore Trail SW & 14 Street SW	Rear End	E
10	Crowchild Trail SW & Glenmore Trail SW	Rear End	W
10	Edmonton Trail NE & 16 Avenue NE	Struck Object	W
9	Crowchild Trail NW & 16 Avenue NW	Rear End	N/W
9	16 Avenue NE & 19 Street NE	Rear End	W

Source: Static data; PIMS (October 2015)

When interpreting these data, it is imperative to consider that these figures represent only the number of collisions and they do not account for associated traffic volumes, weather conditions, collision types, driver experience, or any other variables which may or may not be significant factors. The locations denoted might be associated with intersections, on/off ramps, or mid-block locations, which are in close proximity but not necessarily at the exact specified locations. Collisions occurring on private property, such as shopping mall parking lots have been excluded from the data in order to strictly assess intersection related collisions.

NOTE: This table excludes reports made through the e-Collision reporting system.

# Calgary Crime Statistics - CUMULATIVE NUMBERS

SEPTEMBER 2015

<i>PERSON CRIMES</i>	Current Month			Year To Date			Accumulated To Date		
	Number Of Offences			Number Of Offences			Percentage Cleared		
	2013	2014	2015	2013	2014	2015	2013	2014	2015
<b>Homicide</b>									
1st Degree .....	0	1	1	5	13	11	80.0%	69.2%	36.4%
2nd Degree .....	0	2	3	12	11	10	91.7%	90.9%	70.0%
Manslaughter .....	0	0	0	1	2	1	100.0%	50.0%	100.0%
Infanticide .....	0	0	0	0	0	0	-	-	-
<b>TOTAL</b>	<b>0</b>	<b>3</b>	<b>4</b>	<b>18</b>	<b>26</b>	<b>22</b>	<b>88.9%</b>	<b>76.9%</b>	<b>54.5%</b>
<b>Other Offences Causing Death</b>									
Criminal Negligence .....	0	0	0	0	0	1	-	-	100.0%
Other Offences Causing Death .....	0	0	0	0	0	0	-	-	-
<b>TOTAL</b>	<b>0</b>	<b>0</b>	<b>0</b>	<b>0</b>	<b>0</b>	<b>1</b>	<b>-</b>	<b>-</b>	<b>100.0%</b>
<b>Attempted Homicide</b>									
Attempted Murder .....	0	0	2	7	4	9	71.4%	50.0%	33.3%
Conspiracy To Commit .....	0	0	0	4	0	0	100.0%	-	-
<b>TOTAL</b>	<b>0</b>	<b>0</b>	<b>2</b>	<b>11</b>	<b>4</b>	<b>9</b>	<b>81.8%</b>	<b>50.0%</b>	<b>33.3%</b>
<b>Sex Offences</b>									
Level 3 Aggravated Sexual Assault .....	0	0	0	2	2	0	50.0%	0.0%	-
Level 2 Weapon/Threat/Bodily Harm .....	1	0	0	6	5	3	83.3%	60.0%	66.7%
Level 1 Sexual Assault .....	55	44	51	449	415	438	27.6%	28.2%	28.1%
Indecent Acts .....	16	9	12	116	135	110	47.4%	42.2%	33.6%
Other .....	24	4	5	91	96	68	56.0%	47.9%	50.0%
<b>TOTAL</b>	<b>96</b>	<b>57</b>	<b>68</b>	<b>664</b>	<b>653</b>	<b>619</b>	<b>35.5%</b>	<b>34.2%</b>	<b>31.7%</b>
<b>Robbery</b>									
Financial .....	7	5	2	27	26	44	66.7%	73.1%	79.5%
Commercial .....	21	14	38	123	145	203	39.8%	40.7%	25.6%
Person .....	49	52	48	458	466	443	22.1%	23.2%	25.1%
Home Invasion .....	3	7	4	33	42	57	15.2%	16.7%	22.8%
Robbery of Firearm .....	0	0	0	0	0	0	-	-	-
<b>TOTAL</b>	<b>80</b>	<b>78</b>	<b>92</b>	<b>641</b>	<b>679</b>	<b>747</b>	<b>27.0%</b>	<b>28.4%</b>	<b>28.2%</b>
<b>Assault</b>									
Level 3 - Aggravated .....	4	14	7	90	87	77	76.7%	67.8%	57.1%
Level 2 - Weapon/Bodily Harm .....	128	131	136	1096	1075	1200	60.4%	58.8%	57.9%
Level 1 - Common Assault .....	305	394	360	2768	3327	3434	69.9%	69.0%	70.6%
Assault Police Officer .....	14	24	18	164	135	171	98.8%	99.3%	98.2%
Discharge Firearm with Intent .....	0	0	0	10	13	6	40.0%	23.1%	33.3%
Other Assaults .....	2	3	4	13	22	37	92.3%	81.8%	89.2%
<b>TOTAL</b>	<b>453</b>	<b>566</b>	<b>525</b>	<b>4141</b>	<b>4659</b>	<b>4925</b>	<b>68.7%</b>	<b>67.4%</b>	<b>68.4%</b>
<b>Miscellaneous Person Crimes</b>									
Kidnapping/Abduction .....	6	4	2	26	24	14	46.2%	37.5%	57.1%
Forcible Confinement .....	9	10	17	82	97	87	81.7%	80.4%	73.6%
Extortion .....	1	4	9	20	37	70	60.0%	40.5%	20.0%
Criminal Harassment .....	32	28	21	219	181	191	58.0%	53.0%	50.3%
Indecent/Harassing Calls .....	7	8	3	35	33	43	28.6%	21.2%	39.5%
<b>TOTAL</b>	<b>55</b>	<b>54</b>	<b>52</b>	<b>382</b>	<b>372</b>	<b>405</b>	<b>59.7%</b>	<b>55.1%</b>	<b>49.1%</b>
<b>TOTAL PERSON CRIMES</b>	<b>684</b>	<b>758</b>	<b>743</b>	<b>5857</b>	<b>6393</b>	<b>6728</b>	<b>59.9%</b>	<b>59.2%</b>	<b>59.3%</b>



# Calgary Crime Statistics - CUMULATIVE NUMBERS

SEPTEMBER 2015

<i><b>PROPERTY CRIMES</b></i>	<b>Current Month</b>			<b>Year To Date</b>			<b>Accumulated To Date</b>		
	<b>Number Of Offences</b>			<b>Number Of Offences</b>			<b>Percentage Cleared</b>		
	2013	2014	2015	2013	2014	2015	2013	2014	2015
<b>Break and Enter</b>									
Residential .....	269	183	278	1785	1901	2639	20.1%	16.2%	13.7%
Commercial .....	210	119	221	1518	1419	2666	16.0%	15.3%	9.4%
Other B&E .....	97	95	196	830	907	1445	9.2%	14.7%	4.9%
Unlawfully in Residence .....	2	3	5	25	45	29	84.0%	82.2%	75.9%
B&E Firearms .....	0	0	0	0	1	2	-	0.0%	0.0%
<b>TOTAL</b>	<b>578</b>	<b>400</b>	<b>700</b>	<b>4158</b>	<b>4273</b>	<b>6781</b>	<b>16.8%</b>	<b>16.3%</b>	<b>10.4%</b>
<b>Theft</b>									
Theft Over .....	20	18	12	206	192	219	15.5%	12.5%	9.6%
Theft Under .....	695	608	701	5399	5424	6082	9.9%	9.8%	8.0%
Possession Stolen Property .....	91	110	146	745	753	1210	100.0%	100.0%	100.0%
From Vehicle Over .....	10	8	8	74	58	93	5.4%	5.2%	0.0%
From Vehicle Under .....	748	685	1075	6201	5622	9112	4.0%	3.4%	2.2%
Shoplift Over .....	1	2	1	6	10	13	16.7%	30.0%	15.4%
Shoplift Under .....	295	339	349	2600	3027	3456	73.3%	73.5%	67.7%
<b>TOTAL</b>	<b>1860</b>	<b>1770</b>	<b>2292</b>	<b>15231</b>	<b>15086</b>	<b>20185</b>	<b>22.8%</b>	<b>24.7%</b>	<b>21.1%</b>
<b>Vehicle Theft</b>									
Theft Over .....	413	299	497	3199	2889	4628	8.7%	10.0%	7.7%
Theft Under .....	70	61	100	491	498	1095	18.5%	19.5%	12.4%
Attempted .....	12	7	17	123	101	190	1.6%	3.0%	1.6%
<b>TOTAL</b>	<b>495</b>	<b>367</b>	<b>614</b>	<b>3813</b>	<b>3488</b>	<b>5913</b>	<b>9.7%</b>	<b>11.2%</b>	<b>8.4%</b>
<b>Fraud Related</b>									
False Pretences .....	0	1	1	20	21	15	75.0%	61.9%	60.0%
Forgery/Uttering .....	17	32	16	274	281	260	78.1%	60.1%	58.5%
Forgery-Credit Card .....	23	25	42	167	247	331	35.3%	25.5%	21.5%
Impersonation .....	24	41	31	246	397	420	61.8%	38.8%	44.8%
Food/Lodging/Transportation .....	11	18	23	170	169	237	57.1%	61.5%	57.4%
Defraud Person (Under/Over) .....	135	146	91	1205	1314	1395	40.2%	28.0%	20.4%
Other Fraud .....	9	18	5	74	110	96	66.2%	54.5%	44.8%
<b>TOTAL</b>	<b>219</b>	<b>281</b>	<b>209</b>	<b>2156</b>	<b>2539</b>	<b>2754</b>	<b>49.6%</b>	<b>36.7%</b>	<b>32.1%</b>
<b>Other Property Crimes</b>									
Mischief Over \$5,000 .....	3	7	8	51	72	77	19.6%	20.8%	23.4%
Mischief Under \$5,000 .....	258	187	238	2235	1966	2094	32.7%	26.1%	21.0%
Other Mischief .....	143	85	89	1077	835	844	85.1%	83.2%	77.4%
Vehicle Damage .....	274	259	267	2376	2244	2632	8.5%	8.8%	8.5%
Arson .....	16	29	10	129	165	162	20.2%	15.2%	21.0%
<b>TOTAL</b>	<b>694</b>	<b>567</b>	<b>612</b>	<b>5868</b>	<b>5282</b>	<b>5809</b>	<b>32.1%</b>	<b>27.4%</b>	<b>23.6%</b>
<b>TOTAL PROPERTY CRIMES</b>	<b>3846</b>	<b>3385</b>	<b>4427</b>	<b>31226</b>	<b>30668</b>	<b>41442</b>	<b>24.0%</b>	<b>23.5%</b>	<b>18.7%</b>

# Calgary Crime Statistics - CUMULATIVE NUMBERS

SEPTEMBER 2015

<i><b>OTHER CRIMINAL CODE</b></i>	<b>Current Month</b>			<b>Year To Date</b>			<b>Accumulated To Date</b>		
	<b>Number Of Offences</b>			<b>Number Of Offences</b>			<b>Percentage Cleared</b>		
	2013	2014	2015	2013	2014	2015	2013	2014	2015
<b>Vice</b>									
Impede/Communicate .....	31	0	0	60	48	0	100.0%	100.0%	-
Live on Avails .....	0	0	0	9	3	0	100.0%	100.0%	-
Bawdy House .....	0	0	0	7	3	0	100.0%	100.0%	-
Procure/Solicit .....	4	1	0	29	11	11	93.1%	81.8%	27.3%
<b>TOTAL</b>	<b>35</b>	<b>1</b>	<b>0</b>	<b>105</b>	<b>65</b>	<b>11</b>	<b>98.1%</b>	<b>96.9%</b>	<b>27.3%</b>
<b>Gaming</b>									
Gaming House .....	0	0	0	1	0	0	100.0%	-	-
Betting .....	0	0	0	0	0	0	-	-	-
Lotteries/Games .....	0	0	0	0	0	0	-	-	-
Other .....	0	0	0	0	1	0	-	100.0%	-
<b>TOTAL</b>	<b>0</b>	<b>0</b>	<b>0</b>	<b>1</b>	<b>1</b>	<b>0</b>	<b>100.0%</b>	<b>100.0%</b>	<b>-</b>
<b>Weapon Related</b>									
Prohibited .....	10	8	10	103	113	103	100.0%	100.0%	100.0%
Restricted .....	17	17	17	153	168	214	100.0%	100.0%	100.0%
Explosives .....	0	0	0	1	0	1	100.0%	-	0.0%
Possess Prohibited .....	0	0	0	0	0	0	-	-	-
Use Firearm in Offence .....	1	0	1	5	2	2	100.0%	100.0%	100.0%
FAC Related .....	8	6	11	65	63	105	100.0%	100.0%	100.0%
Other .....	39	30	43	427	303	373	98.6%	98.0%	98.1%
<b>TOTAL</b>	<b>75</b>	<b>61</b>	<b>82</b>	<b>754</b>	<b>649</b>	<b>798</b>	<b>99.2%</b>	<b>99.1%</b>	<b>99.0%</b>
<b>Miscellaneous</b>									
Counterfeiting .....	8	15	47	111	181	463	3.6%	4.4%	16.2%
Obstruct Peace Officer .....	31	44	52	397	400	457	98.7%	99.0%	98.5%
Bail Violation/Fail to attend .....	288	254	286	2375	2690	2634	100.0%	100.0%	100.0%
Fail to comply with Probation .....	47	54	67	471	459	539	100.0%	100.0%	99.8%
Escape Custody/UAL .....	18	10	14	149	103	166	100.0%	99.0%	94.6%
Attempt to commit/accessory .....	3	3	0	19	20	26	94.7%	95.0%	69.2%
Miscellaneous .....	117	128	144	1143	1281	1303	72.7%	70.1%	70.8%
<b>TOTAL</b>	<b>512</b>	<b>508</b>	<b>610</b>	<b>4665</b>	<b>5134</b>	<b>5588</b>	<b>90.9%</b>	<b>89.1%</b>	<b>85.8%</b>
<b>TOTAL OTHER CRIMINAL CODE</b>	<b>622</b>	<b>570</b>	<b>692</b>	<b>5525</b>	<b>5849</b>	<b>6397</b>	<b>92.1%</b>	<b>90.3%</b>	<b>87.3%</b>
<b>TOTAL CRIMINAL CODE (EXCL. TRAFFIC)</b>	<b>5152</b>	<b>4713</b>	<b>5862</b>	<b>42608</b>	<b>42910</b>	<b>54567</b>	<b>37.8%</b>	<b>37.9%</b>	<b>31.7%</b>

# Calgary Crime Statistics - CUMULATIVE NUMBERS

SEPTEMBER 2015

<i><b>SELECTED OTHER</b></i>	<b>Current Month</b>			<b>Year To Date</b>			<b>Accumulated To Date</b>		
	<b>Number Of Offences</b>			<b>Number Of Offences</b>			<b>Percentage Cleared</b>		
	2013	2014	2015	2013	2014	2015	2013	2014	2015
<b>Criminal Code Traffic</b>									
Impaired Causing Death .....	2	0	0	2	0	4	100.0%	-	100.0%
Impaired Causing Bodily Harm .....	2	0	0	5	2	5	100.0%	100.0%	100.0%
Impaired > .08 .....	81	68	58	810	712	547	100.0%	100.0%	100.0%
Impaired Driving.....	105	101	78	1030	934	734	99.9%	100.0%	100.0%
Fail/Refuse .....	31	36	30	267	281	244	100.0%	100.0%	100.0%
Dangerous Causing Death .....	2	0	0	3	0	4	100.0%	-	100.0%
Dangerous Operation Causing Harm .....	4	1	2	10	5	6	100.0%	100.0%	100.0%
Dangerous Operation of Motor Vehicle .....	9	16	14	104	121	110	99.0%	99.2%	98.2%
Impaired Driving (Drugs) .....	0	0	0	1	1	0	100.0%	100.0%	-
<b>TOTAL</b>	<b>236</b>	<b>222</b>	<b>182</b>	<b>2232</b>	<b>2056</b>	<b>1654</b>	<b>99.9%</b>	<b>100.0%</b>	<b>99.9%</b>
<b>Drugs</b>									
CDSA/NCA/FDA Possession .....	92	67	76	786	839	665	100.0%	100.0%	100.0%
CDSA/NCA/FDA Trafficking .....	24	8	7	169	229	80	100.0%	100.0%	100.0%
CDSA/NCA/FDA Possession for Purpose .....	30	38	28	348	337	341	100.0%	100.0%	100.0%
CDSA/NCA Importation/Export .....	1	0	0	2	0	3	100.0%	-	100.0%
CDSA/NCA Cultivation/Production .....	2	2	0	29	19	12	100.0%	100.0%	100.0%
CDSA/NCA/FDA Prop./Proc. from Trafficking	0	0	0	0	0	0	-	-	-
<b>TOTAL</b>	<b>149</b>	<b>115</b>	<b>111</b>	<b>1334</b>	<b>1424</b>	<b>1101</b>	<b>100.0%</b>	<b>100.0%</b>	<b>100.0%</b>
<b>Selected Non Criminal Code Incidents</b>									
Accidental/Sudden Death.....	54	65	50	528	524	530	N/A	N/A	N/A
Missing Persons .....	217	298	286	2254	2176	2388	N/A	N/A	N/A
Court Order .....	86	102	136	961	889	1083	N/A	N/A	N/A
Domestic Information.....	1132	1061	1131	9941	9648	10272	N/A	N/A	N/A
Domestic Information Standby .....	80	76	94	703	635	745	N/A	N/A	N/A
<b>TOTAL</b>	<b>1569</b>	<b>1602</b>	<b>1697</b>	<b>14387</b>	<b>13872</b>	<b>15018</b>	<b>N/A</b>	<b>N/A</b>	<b>N/A</b>
<b>Statutes</b>									
Federal .....	23	18	25	228	245	227	100.0%	100.0%	99.6%
Provincial .....	30	28	39	355	318	373	99.4%	98.4%	99.2%
Municipal .....	12	6	5	75	55	56	100.0%	100.0%	100.0%
<b>TOTAL</b>	<b>65</b>	<b>52</b>	<b>69</b>	<b>658</b>	<b>618</b>	<b>656</b>	<b>99.7%</b>	<b>99.2%</b>	<b>99.4%</b>
<b>TOTAL SELECTED OTHER</b>	<b>2019</b>	<b>1991</b>	<b>2059</b>	<b>18611</b>	<b>17970</b>	<b>18429</b>	<b>99.9%</b>	<b>99.9%</b>	<b>99.8%</b>