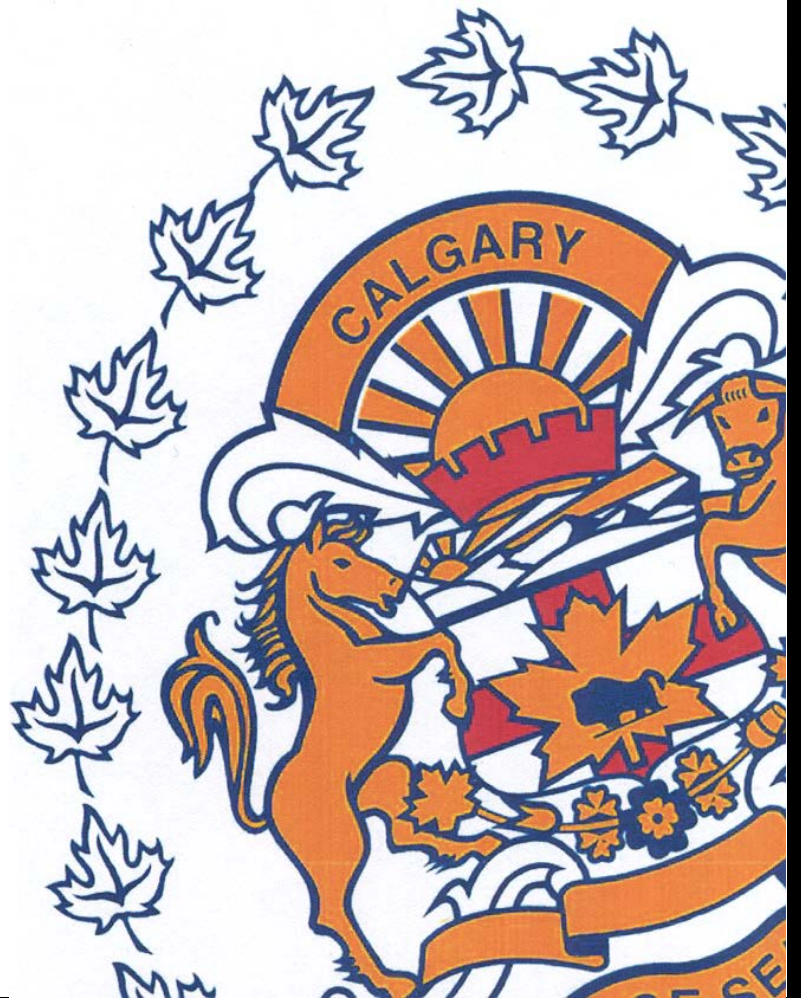


OCTOBER

Monthly Statistical REPORT 2015

Compiled by: Centralized Analysis Unit
Crime and Intelligence Analytical Section
Strategic Services Division
© Calgary Police Service 2016



The Calgary Police Service provides this information in good faith but it provides no warranty, nor accepts any liability arising from any incorrect, incomplete or misleading information.

TABLE OF CONTENTS

	<i>Page</i>
Monthly Highlights - STATIC NUMBER COMPARISON	1
Calgary Crime Statistics – STATIC NUMBERS	
Person Crimes	2
Property Crimes	3
Other Criminal Code/Selected Other/Drug Offences	4
Calgary Traffic Collisions – CUMULATIVE NUMBERS	5
Calgary Crime Statistics - CUMULATIVE NUMBERS	6

REPORT NOTES

Most of the statistical data in this report are derived from the Police Information Management System (PIMS) and compiled by the Centralized Analysis Unit. The numbers reported may change on a daily basis due to the dynamic nature of offences being reported and cleared. Disorder data is derived from the CAD system and is static.

To a large extent, the data in this report are based on accumulated to date information. ***(Except for the Monthly Highlights which are based on static information (i.e.: a snap-shot in time).***

- For offences based on accumulated to date information, the number of offences recorded may be higher than previously reported (i.e. in previous statistical reports) due to late reporting. Although this does not greatly affect the number of occurrences for all offences, for some categories it may be as high as a 30-40% increase. The published data for the current period can therefore be expected to increase as time passes. As a result, readers should exercise caution when making comparisons between historical data and current data (i.e. previous year to this year) as data for the historic period will now include late reported offences, but data for the current period will not at this time. To achieve an effective comparison, current data should be evaluated against the originally published data for the historic period.
- Likewise, late reporting affects the number and percentage of offences cleared. Cases are often cleared months and sometimes years later. Consequently, clearances for previous years may appear to be much higher than those of the present year. Cases “cleared by charge” and those “cleared otherwise” are included in these totals.
- For offences based on “static” or “snap-shot” information, data totals will only reflect the number of offences reported in the original publication. They are not updated. Although late reporting may occur, and offences may continue to be cleared as time passes, these new events are not taken into account when preparing this statistical report.

A single incident may result in multiple offences, with each unique *Criminal Code* violation within the incident being counted as an offence. Furthermore, person crime offences are typically counted by the number of victims. Please note that offences are assigned to the month in which the offence "started", not the month they were reported or cleared. Also note that “attempted” incidents are included in these totals. For a more detailed explanation of the Offence counting procedure, please contact the Centralized Analysis Unit.

Monthly Highlights – STATIC NUMBER COMPARISON

To reduce the impact of late reporting, comments on this page are a comparison between the CPS October 2015 Statistical Report and the CPS October 2014 Statistical Report. To achieve an effective comparison, current data should be evaluated against the originally published data for the historic period.

OCTOBER 2015

PERSON CRIME

- ◆ Reported **person crimes** for the month of October 2015 increased 8.1% when compared to October 2014 (798 offences in October 2015 vs. 738 in October 2014). Person crimes also increased over the five year average for October, by 12.2%.
- ◆ Total **robbery** offences for the month of October 2015 increased 31.4% when compared to October 2014 (113 offences in October 2015 vs. 86 in October 2014); During October 2015 there were:
 - 4 **financial robberies** (compared to 3 in October 2014);
 - 35 **commercial robberies** (compared to 19 in October 2014);
 - 63 **person robberies** (compared to 62 in October 2014); and
 - 11 **home invasions** (compared to 2 in October 2014).
- ◆ **Assaults** increased very slightly this month (563 offences in October 2015 vs. 557 in October 2014).
- ◆ **Sex offences** increased by 32.1% this month (70 **sex offences** in October 2015 vs. 53 in October 2014).

PROPERTY CRIME

- ◆ Reported **property crimes** this month increased 50.7% when compared to October 2014 (5061 offences in October 2015 compared to 3359 in October 2014) and also increased 51.6% over the five year October average of 3339.
- ◆ **Vehicle theft** (including attempts) increased 62.0% when compared to October 2014 (703 offences in October 2015 vs. 434 in October 2014).
- ◆ **Theft** offences increased 44.1% this month when compared to October 2014 (2458 offences in October 2015 vs. 1706 in October 2014).
- ◆ **Break and enter** offences this month increased 123.4% when compared to October 2014 (925 offences this month compared to 414 in October 2014).
 - **Residential break and enter** offences this month increased 88.9% when compared to October 2014 (340 offences in October 2015 vs. 180 in October 2014); and
 - **Commercial break and enter** offences increased 211.4% this month when compared to October 2014 (383 offences in October 2015 vs. 123 in October 2014).
- ◆ **Fraud related** offences increased 55.2% this month (256 offences in October 2015 vs. 165 in October 2014).

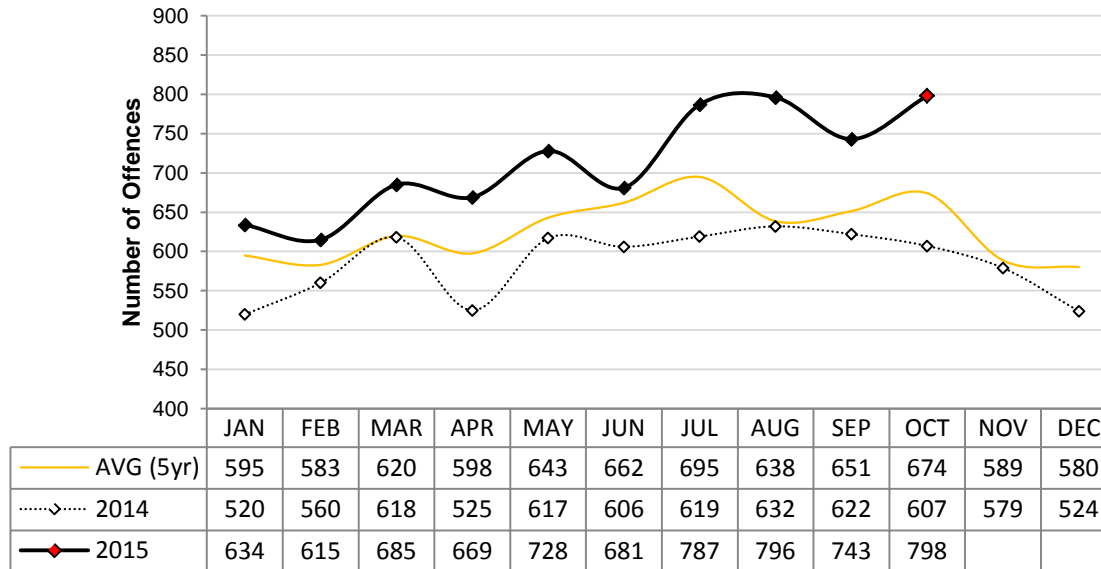
Calgary Person Crime Statistics – STATIC NUMBERS

The static crime numbers on this page are derived from historical Calgary Police Service Monthly Statistical Reports. These statistics are used when writing the Monthly Highlights page in order to make a fair comparison using data which has not been allowed to increase due to late reporting of crime. Using static numbers allows us to compare crime levels at a specific point in time and make an accurate determination of increases or decreases. The cumulative crime numbers (pages 7 – 10) are statistics derived from the CPS Police Information Management System. P.I.M.S. cannot produce static numbers and therefore the cumulative numbers reflect any late reporting of crime. To achieve an effective comparison, current data should be evaluated against the originally published data for the historic period. *Due to the dynamic nature of ongoing homicide investigations these numbers may have been manually updated to reflect the current homicide count. Due to manually updating, it's possible 1 or more homicides may be reflected within the assault category. The homicide counts are provided by the homicide unit.

OCTOBER 2015

	Current Month Number Of Offences			Year To Date Number Of Offences			% Cleared 2015
	2014	2015	% Change (2014-2015)	2014	2015	% Change (2014-2015)	
PERSON CRIMES							
Homicide*	2	4	100.0%	28	27	-3.6%	51.9%
Other Offences Causing Death	0	0	N/A	0	1	N/A	100.0%
Attempted Homicide	1	2	100.0%	5	11	120.0%	36.4%
Sex Offences	53	70	32.1%	656	711	8.4%	34.3%
Robbery:							
Financial	3	4	33.3%	29	48	65.5%	77.1%
Commercial	19	35	84.2%	165	237	43.6%	23.6%
Person	62	63	1.6%	525	509	-3.0%	24.4%
Home Invasion	2	11	450.0%	44	69	56.8%	20.3%
Total Robbery	86	113	31.4%	763	863	13.1%	26.8%
Assault:							
Level 3 - Aggravated	10	10	0.0%	94	89	-5.3%	57.3%
Level 2 - Weapon/Bodily Harm	141	135	-4.3%	1213	1342	10.6%	57.9%
Level 1 - Common Assault	390	394	1.0%	3675	3844	4.6%	70.9%
Assault Police Officer	11	20	81.8%	145	193	33.1%	98.4%
Discharge Firearm with Intent	5	1	-80.0%	17	7	-58.8%	28.6%
Other Assaults	0	3	N/A	19	40	110.5%	85.0%
Total Assault	557	563	1.1%	5163	5515	6.8%	68.5%
Misc Person Crimes	39	46	17.9%	373	474	27.1%	50.0%
TOTAL PERSON CRIMES	738	798	8.1%	6988	7602	8.8%	59.3%

**Person Crime-Static Numbers
YTD Jan 01 to Oct 31 2015**



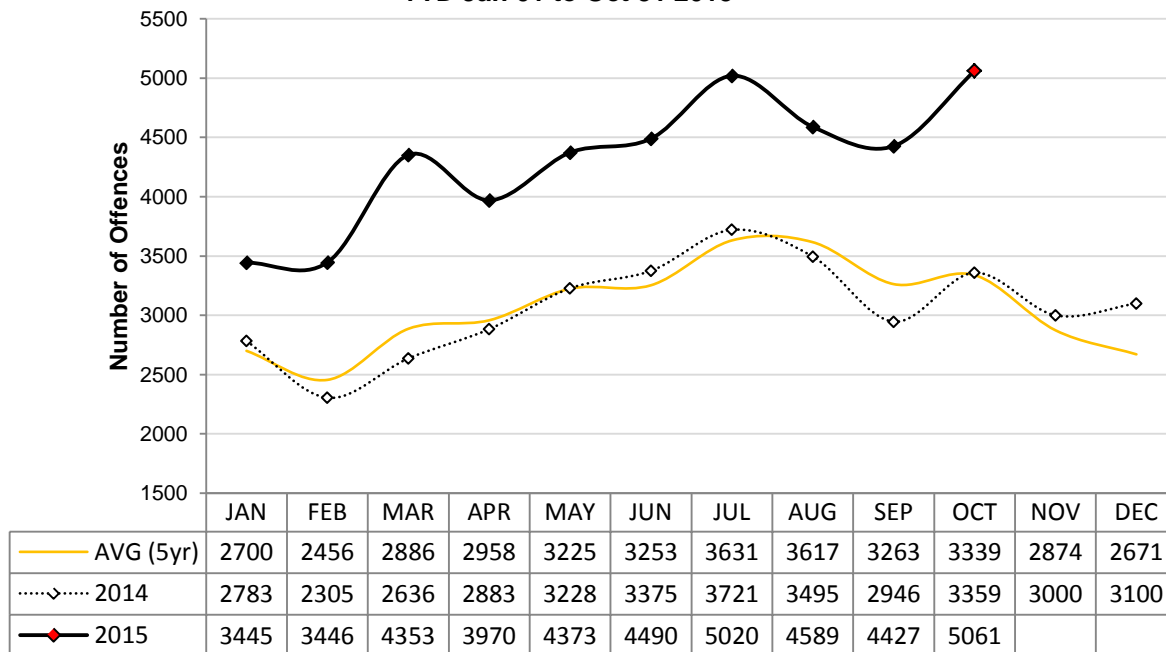
Calgary Property Crime Statistics – STATIC NUMBERS

The static crime numbers on this page are derived from historical Calgary Police Service Monthly Statistical Reports. These statistics are used when writing the Monthly Highlights page in order to make a fair comparison using data which has not been allowed to increase due to late reporting of crime. Using static numbers allows us to compare crime levels at a specific point in time and make an accurate determination of increases or decreases. The cumulative crime numbers (pages 7 – 10) are statistics derived from the CPS Police Information Management System. P.I.M.S. cannot produce static numbers and therefore the cumulative numbers reflect any late reporting of crime. To achieve an effective comparison, current data should be evaluated against the originally published data for the historic period.

OCTOBER 2015

	Current Month			Year To Date			
	Number Of Offences			Number Of Offences			
	2014	2015	% Change (2014-2015)	2014	2015	% Change (2014-2015)	% Cleared 2015
PROPERTY CRIMES							
Break and Enter:							
<i>Residential B&E</i>	180	340	88.9%	2066	2993	44.9%	13.4%
<i>Commercial B&E</i>	123	383	211.4%	1527	3066	100.8%	9.9%
<i>Other B&E</i>	106	197	85.8%	1008	1654	64.1%	5.3%
<i>Unlawfully in Residence</i>	5	5	0.0%	50	34	-32.0%	79.4%
Total Break and Enter	414	925	123.4%	4651	7747	66.6%	10.6%
Theft	1706	2458	44.1%	16582	22903	38.1%	21.0%
Vehicle Theft (including attempts)	434	703	62.0%	3891	6662	71.2%	8.2%
Fraud Related	165	256	55.2%	2464	3171	28.7%	32.0%
Other Property Crimes	640	719	12.3%	5872	6580	12.1%	23.7%
TOTAL PROPERTY CRIMES	3359	5061	50.7%	33460	47063	40.7%	18.7%

**Property Crime-Static Numbers
YTD Jan 01 to Oct 31 2015**



Calgary Other Crime Statistics – STATIC NUMBERS

The static crime numbers on this page are derived from historical Calgary Police Service Monthly Statistical Reports. These statistics are used when writing the Monthly Highlights page in order to make a fair comparison using data which has not been allowed to increase due to late reporting of crime. Using static numbers allows us to compare crime levels at a specific point in time and make an accurate determination of increases or decreases. The cumulative crime numbers (pages 7 – 10) are statistics derived from the CPS Police Information Management System. P.I.M.S. cannot produce static numbers and therefore the cumulative numbers reflect any late reporting of crime. To achieve an effective comparison, current data should be evaluated against the originally published data for the historic period.

OCTOBER 2015

	Current Month Number Of Offences			Year To Date Number Of Offences			% Cleared 2015
	2014	2015	% Change (2014-2015)	2014	2015	% Change (2014-2015)	
OTHER CRIMINAL CODE							
Vice	0	0	N/A	61	12	-80.3%	98.4%
Gaming	0	0	N/A	1	0	-100.0%	100.0%
Weapon Related	75	96	28.0%	714	913	27.9%	99.2%
Misc	513	605	17.9%	5555	6233	12.2%	89.3%
TOTAL OTHER CRIMINAL CODE	588	701	19.2%	6331	7158	13.1%	87.9%
TOTAL OVERALL CRIMINAL CODE (excluding traffic)	4685	6560	40.0%	46779	61823	32.2%	31.6%
SELECTED OTHER							
Criminal Code Traffic	232	170	-26.7%	2270	1836	-19.1%	99.9%
Drugs	157	134	-14.6%	1576	1255	-20.4%	100.0%
Selected Non Criminal Code:							
<i>Accidental/Sudden Death</i>	56	52	-7.1%	578	583	0.9%	N/A
<i>Missing Persons</i>	280	284	1.4%	2453	2674	9.0%	N/A
<i>Court Order</i>	97	121	24.7%	986	1202	21.9%	N/A
<i>Domestic Information</i>	1036	1055	1.8%	10628	11362	6.9%	N/A
<i>Domestic Information Standby</i>	74	89	20.3%	701	834	19.0%	N/A
Total Selected Non Criminal Code	1543	1601	3.8%	15346	16655	8.5%	N/A
Statutes (Federal/Provincial/Municipal)	78	74	-5.1%	688	735	6.8%	99.5%
TOTAL SELECTED OTHER	2010	1979	-1.5%	19880	20481	3.0%	99.8%

Number of Drug Offences Year To Date

	2011	2012	2013	2014	2015	Trend
Demand	818	850	877	934	765	
Supply	781	664	591	642	490	
Total	1599	1514	1468	1576	1255	
	Drug Type					
Cannabis	997	867	881	879	569	
Cocaine/Crack	461	507	448	501	386	
Heroin	19	23	28	43	80	
All Other Drugs	122	117	111	153	220	
Total	1599	1514	1468	1576	1255	

Calgary Traffic Collisions – CUMULATIVE NUMBERS

OCTOBER 2015

	Current Month # of Collisions			Year To Date # of Collisions			Year To Date Rate per 100,000 population		
	2013	2014	2015	2013	2014	2015	2013	2014	2015
Fatal Collisions	5	3	0	33	24	20	2.9	2.0	1.6
Injury Collisions	267	308	247	2330	2454	2227	201.4	205.3	180.9
Property Damage Collisions	3710	3403	3263	32960	35198	33737	2849.5	2945.0	2740.8
e-Collision Reports*	22	47	255	257	244	962	22.2	20.4	78.2
Total Collisions	4004	3761	3765	35580	37920	36946	3076.0	3172.7	3001.5
<i>Parking Lot Collisions</i>	707	662	551	7418	7271	6744	641.3	608.4	547.9
Total Reportable Collisions	3297	3099	3214	28162	30649	30202	2434.7	2564.4	2453.6

Source: Cumulative data; PIMS (November 2015)

NOTE: Total Reportable Collisions exclude collisions along private roadways or public parking lots.

The number of reported traffic collisions may continue to increase over time. Due to data collection and reporting methods, totals for the current month may not be comparable to previous years.

* e-Collision reporting is a data system which became operational in July 2009. At the time this report was published it was not possible to separate all collisions based on level of severity or to determine whether they occurred in a parking lot. Therefore, as e-Collision reports are completed and entered into the CPS records management system, it is determined whether or not they are reportable, and they are removed from the e-Collision count total and reclassified based on level of severity.

Top Collision Locations and Primary Cause of Events

Number of Collisions	Location	Primary Cause of Event	Primary Direction of Travel
22	Deerfoot Trail NE & McKnight Boulevard NE	Rear End	N / S
16	Deerfoot Trail NE & Memorial Drive E	Rear End	S
15	Deerfoot Trail SE & Glenmore Trail SE	Rear End	E
15	Deerfoot Trail SE & 17 Avenue SE	Rear End	N
14	Deerfoot Trail NE & 16 Avenue NE	Rear End	N / W
14	Deerfoot Trail SE & Peigan Trail SE	Rear End	N / S
12	Glenmore Trail SW & 14 Street SW	Rear End	E / W
11	16 Avenue NE & 52 Street NE	Rear End	S
10	Deerfoot Trail NE & 64 Avenue NE	Rear End	S
10	John Laurie Boulevard NW & Shaganappi Trail NW	Rear End	S

Source: Static data; PIMS (December 2015)

When interpreting these data, it is imperative to consider that these figures represent only the number of collisions and they do not account for associated traffic volumes, weather conditions, collision types, driver experience, or any other variables which may or may not be significant factors. The locations denoted might be associated with intersections, on/off ramps, or mid-block locations, which are in close proximity but not necessarily at the exact specified locations. Collisions occurring on private property, such as shopping mall parking lots have been excluded from the data in order to strictly assess intersection related collisions.

NOTE: This table excludes reports made through the e-Collision reporting system.

Calgary Crime Statistics - CUMULATIVE NUMBERS

OCTOBER 2015

<i>PERSON CRIMES</i>	Current Month			Year To Date			Accumulated To Date		
	Number Of Offences			Number Of Offences			Percentage Cleared		
	2013	2014	2015	2013	2014	2015	2013	2014	2015
Homicide									
1st Degree	3	1	3	8	14	14	75.0%	64.3%	28.6%
2nd Degree	0	1	1	12	12	11	91.7%	91.7%	72.7%
Manslaughter	0	0	0	1	2	2	100.0%	50.0%	100.0%
Infanticide	0	0	0	0	0	0	-	-	-
TOTAL	3	2	4	21	28	27	85.7%	75.0%	52.9%
Other Offences Causing Death									
Criminal Negligence	3	0	0	3	0	1	100.0%	-	100.0%
Other Offences Causing Death	0	0	0	0	0	0	-	-	-
TOTAL	3	0	0	3	0	1	100.0%	-	100.0%
Attempted Homicide									
Attempted Murder	1	1	2	8	5	11	62.5%	60.0%	36.4%
Conspiracy To Commit	0	0	0	4	0	0	100.0%	-	-
TOTAL	1	1	2	12	5	11	75.0%	60.0%	36.4%
Sex Offences									
Level 3 Aggravated Sexual Assault	2	0	0	4	2	0	25.0%	0.0%	-
Level 2 Weapon/Threat/Bodily Harm	1	0	0	7	5	3	85.7%	60.0%	66.7%
Level 1 Sexual Assault	40	61	41	489	476	495	27.8%	27.1%	30.7%
Indecent Acts	15	10	17	131	145	128	47.3%	40.0%	36.7%
Other	9	6	12	100	102	85	57.0%	48.0%	50.6%
TOTAL	67	77	70	731	730	711	35.8%	32.7%	34.3%
Robbery									
Financial	3	3	4	30	29	48	66.7%	75.9%	77.1%
Commercial	32	19	35	155	164	237	38.1%	41.5%	23.6%
Person	50	65	63	508	531	509	22.4%	21.8%	24.4%
Home Invasion	4	3	11	37	45	69	13.5%	15.6%	20.3%
Robbery of Firearm	0	0	0	0	0	0	-	-	-
TOTAL	89	90	113	730	769	863	27.1%	27.7%	26.8%
Assault									
Level 3 - Aggravated	8	10	10	98	97	89	74.5%	70.1%	57.3%
Level 2 - Weapon/Bodily Harm	127	153	135	1223	1228	1342	59.9%	57.7%	57.9%
Level 1 - Common Assault	309	399	394	3077	3726	3844	69.1%	68.8%	70.9%
Assault Police Officer	17	11	20	181	146	193	98.9%	99.3%	98.4%
Discharge Firearm with Intent	6	6	1	16	19	7	62.5%	31.6%	28.6%
Other Assaults	0	1	3	13	23	40	92.3%	82.6%	85.0%
TOTAL	467	580	563	4608	5239	5515	68.0%	67.0%	68.5%
Miscellaneous Person Crimes									
Kidnapping/Abduction	4	3	6	30	27	20	50.0%	33.3%	40.0%
Forcible Confinement	4	12	7	86	109	102	82.6%	81.7%	74.5%
Extortion	3	6	3	23	43	74	52.2%	41.9%	20.3%
Criminal Harassment	27	30	25	246	211	229	57.7%	53.1%	52.4%
Indecent/Harassing Calls	6	0	5	41	33	49	29.3%	21.2%	36.7%
TOTAL	44	51	46	426	423	474	59.2%	55.6%	50.0%
TOTAL PERSON CRIMES	674	801	798	6531	7194	7602	59.3%	58.7%	59.3%

Calgary Crime Statistics - CUMULATIVE NUMBERS

OCTOBER 2015

<i>PROPERTY CRIMES</i>	Current Month			Year To Date			Accumulated To Date		
	Number Of Offences			Number Of Offences			Percentage Cleared		
	2013	2014	2015	2013	2014	2015	2013	2014	2015
Break and Enter									
Residential	352	189	340	2137	2090	2993	21.3%	16.4%	13.4%
Commercial	186	140	383	1704	1559	3066	15.9%	14.6%	9.9%
Other B&E	86	112	197	916	1019	1652	9.3%	13.5%	5.3%
Unlawfully in Residence	10	5	5	35	50	34	82.9%	82.0%	79.4%
B&E Firearms	0	0	0	0	1	2	-	0.0%	0.0%
TOTAL	634	446	925	4792	4719	7747	17.5%	15.9%	10.6%
Theft									
Theft Over	20	27	19	226	219	249	15.0%	12.8%	9.2%
Theft Under	691	645	705	6090	6069	6856	10.1%	9.7%	8.1%
Possession Stolen Property	86	73	127	832	826	1377	100.0%	100.0%	100.0%
From Vehicle Over	4	8	11	78	66	104	5.1%	4.5%	0.0%
From Vehicle Under	722	794	1167	6923	6416	10390	3.8%	3.1%	2.2%
Shoplift Over	2	2	1	8	12	14	25.0%	25.0%	14.3%
Shoplift Under	269	313	428	2869	3340	3913	72.9%	73.2%	67.4%
TOTAL	1794	1862	2458	17026	16948	22903	22.6%	24.1%	21.0%
Vehicle Theft									
Theft Over	399	377	546	3598	3266	5196	8.9%	10.0%	7.5%
Theft Under	71	94	135	562	592	1252	18.7%	19.4%	12.4%
Attempted	28	14	22	151	115	214	2.6%	2.6%	1.4%
TOTAL	498	485	703	4311	3973	6662	10.0%	11.2%	8.2%
Fraud Related									
False Pretences	4	3	4	24	24	21	75.0%	62.5%	42.9%
Forgery/Uttering	20	35	20	294	316	296	76.5%	60.4%	58.1%
Forgery-Credit Card	14	32	35	181	279	386	33.7%	25.8%	21.5%
Impersonation	42	59	43	288	456	502	59.7%	39.0%	44.6%
Food/Lodging/Transportation	28	20	30	198	189	271	58.6%	58.7%	55.4%
Defraud Person (Under/Over)	167	158	118	1372	1472	1587	39.8%	28.0%	20.8%
Other Fraud	6	11	6	80	121	108	65.0%	57.9%	44.4%
TOTAL	281	318	256	2437	2857	3171	48.8%	36.7%	32.0%
Other Property Crimes									
Mischief Over \$5,000	10	10	22	61	82	101	21.3%	20.7%	23.8%
Mischief Under \$5,000	273	238	266	2508	2204	2372	32.2%	25.4%	21.2%
Other Mischief	123	78	109	1200	913	962	84.4%	83.1%	77.2%
Vehicle Damage	334	335	307	2710	2579	2967	8.3%	8.5%	8.6%
Arson	30	33	15	159	198	178	18.2%	18.2%	20.2%
TOTAL	770	694	719	6638	5976	6580	31.4%	26.6%	23.7%
TOTAL PROPERTY CRIMES	3977	3805	5061	35204	34473	47063	23.8%	23.0%	18.7%

Calgary Crime Statistics - CUMULATIVE NUMBERS

OCTOBER 2015

<i>OTHER CRIMINAL CODE</i>	Current Month			Year To Date			Accumulated To Date		
	Number Of Offences			Number Of Offences			Percentage Cleared		
	2013	2014	2015	2013	2014	2015	2013	2014	2015
Vice									
Impede/Communicate	32	0	0	92	48	0	100.0%	100.0%	-
Live on Avails	0	0	0	9	3	0	100.0%	100.0%	-
Bawdy House	0	0	0	7	3	0	100.0%	100.0%	-
Procure/Solicit	0	1	0	29	12	12	93.1%	83.3%	41.7%
TOTAL	32	1	0	137	66	12	98.5%	97.0%	41.7%
Gaming									
Gaming House	0	0	0	1	0	0	100.0%	-	-
Betting	0	0	0	0	0	0	-	-	-
Lotteries/Games	0	0	0	0	0	0	-	-	-
Other	0	0	0	0	1	0	-	100.0%	-
TOTAL	0	0	0	1	1	0	100.0%	100.0%	-
Weapon Related									
Prohibited	11	13	11	114	126	114	100.0%	100.0%	100.0%
Restricted	25	20	22	178	188	242	100.0%	100.0%	100.0%
Explosives	0	0	0	1	0	1	100.0%	-	0.0%
Possess Prohibited	0	0	0	0	0	0	-	-	-
Use Firearm in Offence	1	3	0	6	5	3	100.0%	100.0%	100.0%
FAC Related	8	5	21	73	68	129	100.0%	100.0%	100.0%
Other	43	53	42	470	356	424	98.5%	98.0%	98.1%
TOTAL	88	94	96	842	743	913	99.2%	99.1%	99.0%
Miscellaneous									
Counterfeiting	8	5	21	119	186	487	3.4%	4.8%	16.6%
Obstruct Peace Officer	44	44	40	441	444	500	98.9%	98.9%	98.8%
Bail Violation/Fail to attend	328	285	310	2703	2975	2960	99.9%	100.0%	100.0%
Fail to comply with Probation	62	49	60	533	508	602	100.0%	100.0%	100.0%
Escape Custody/UAL	13	13	22	162	116	188	100.0%	99.1%	94.7%
Attempt to commit/accessory	5	4	4	24	24	30	95.8%	91.7%	70.0%
Miscellaneous	130	166	148	1273	1447	1466	72.6%	70.8%	71.5%
TOTAL	590	566	605	5255	5700	6233	91.0%	89.4%	86.4%
TOTAL OTHER CRIMINAL CODE	710	661	701	6235	6510	7158	92.3%	90.5%	87.9%
TOTAL CRIMINAL CODE (EXCL. TRAFFIC)	5361	5267	6560	47970	48177	61823	37.6%	37.5%	31.6%

Calgary Crime Statistics - CUMULATIVE NUMBERS

OCTOBER 2015

<i>SELECTED OTHER</i>	Current Month			Year To Date			Accumulated To Date		
	Number Of Offences			Number Of Offences			Percentage Cleared		
	2013	2014	2015	2013	2014	2015	2013	2014	2015
Criminal Code Traffic									
Impaired Causing Death	1	0	0	3	0	4	100.0%	-	100.0%
Impaired Causing Bodily Harm	1	0	0	6	2	5	100.0%	100.0%	100.0%
Impaired > .08	96	81	54	906	793	603	100.0%	100.0%	100.0%
Impaired Driving	127	106	76	1157	1040	814	99.9%	100.0%	100.0%
Fail/Refuse	30	34	29	297	315	274	100.0%	100.0%	100.0%
Dangerous Causing Death	1	0	0	4	0	4	100.0%	-	100.0%
Dangerous Operation Causing Harm	2	0	1	12	5	9	100.0%	100.0%	100.0%
Dangerous Operation of Motor Vehicle	13	18	10	117	139	123	99.1%	99.3%	98.4%
Impaired Driving (Drugs)	0	0	0	1	1	0	100.0%	100.0%	-
TOTAL	271	239	170	2503	2295	1836	99.9%	100.0%	99.9%
Drugs									
CDSA/NCA/FDA Possession	110	111	94	896	950	765	100.0%	100.0%	100.0%
CDSA/NCA/FDA Trafficking	17	17	11	186	246	92	100.0%	100.0%	100.0%
CDSA/NCA/FDA Possession for Purpose	47	46	29	395	383	383	100.0%	100.0%	100.0%
CDSA/NCA Importation/Export	0	0	0	2	0	3	100.0%	-	100.0%
CDSA/NCA Cultivation/Production	2	5	0	31	24	12	100.0%	100.0%	100.0%
CDSA/NCA/FDA Prop./Proc. from Trafficking	0	0	0	0	0	0	-	-	-
TOTAL	176	179	134	1510	1603	1255	100.0%	100.0%	100.0%
Selected Non Criminal Code Incidents									
Accidental/Sudden Death	66	57	52	594	581	583	N/A	N/A	N/A
Missing Persons	230	286	284	2484	2462	2674	N/A	N/A	N/A
Court Order	107	96	121	1068	985	1202	N/A	N/A	N/A
Domestic Information	1087	1072	1055	11028	10720	11362	N/A	N/A	N/A
Domestic Information Standby	71	74	89	774	709	834	N/A	N/A	N/A
TOTAL	1561	1585	1601	15948	15457	16655	N/A	N/A	N/A
Statutes									
Federal	25	21	20	253	266	248	99.6%	100.0%	99.6%
Provincial	41	57	49	396	375	424	99.5%	98.4%	99.3%
Municipal	5	9	5	80	64	63	100.0%	100.0%	100.0%
TOTAL	71	87	74	729	705	735	99.6%	99.1%	99.5%
TOTAL SELECTED OTHER	2079	2090	1979	20690	20060	20481	99.9%	99.9%	99.8%