

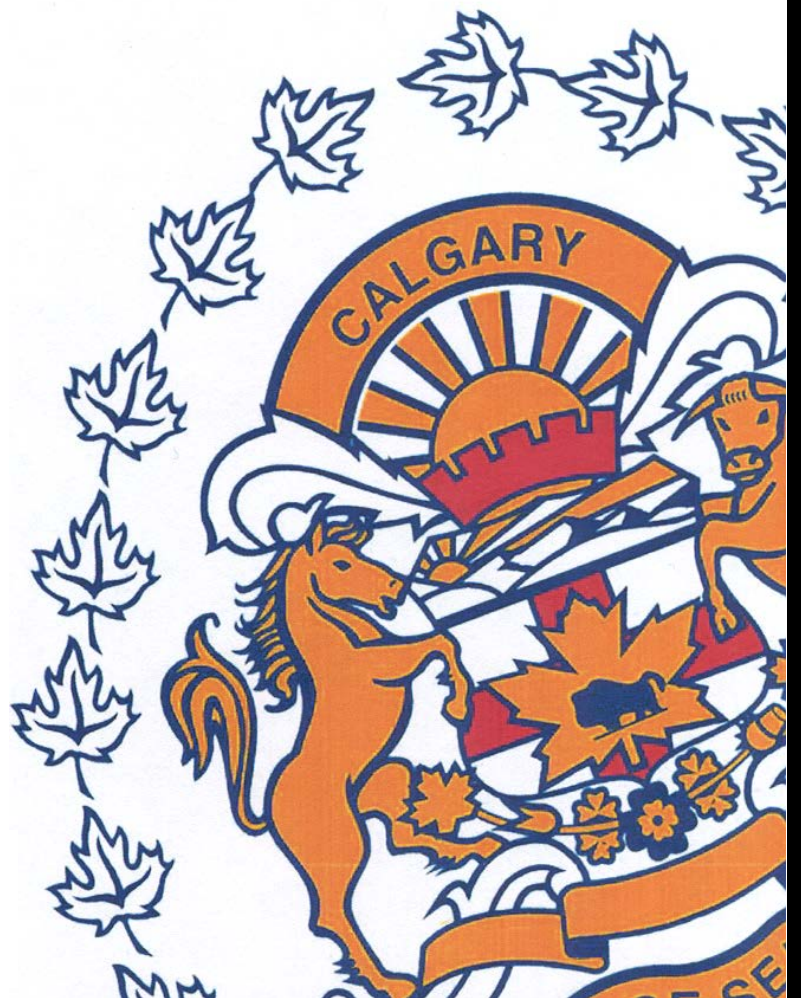
# JANUARY

## Monthly Statistical

# REPORT

# 2015

Compiled by: Centralized Analysis Unit  
Crime and Intelligence Analytical Section  
Strategic Services Division  
© Calgary Police Service 2015



*The Calgary Police Service provides this information in good faith but it provides no warranty, nor accepts any liability arising from any incorrect, incomplete or misleading information.*

# TABLE OF CONTENTS

	<i>Page</i>
<b>Monthly Highlights - STATIC NUMBER COMPARISON</b>	<b>1</b>
<b>Calgary Crime Statistics – STATIC NUMBERS</b>	
<b>Person Crimes</b>	<b>2</b>
<b>Property Crimes</b>	<b>3</b>
<b>Other Criminal Code/Selected Other/Drug Offences</b>	<b>4</b>
<b>Calgary Traffic Collisions – CUMULATIVE NUMBERS</b>	<b>5</b>
<b>Calgary Crime Statistics - CUMULATIVE NUMBERS</b>	<b>6</b>

---

## REPORT NOTES

Most of the statistical data in this report are derived from the Police Information Management System (PIMS) and compiled by the Centralized Analysis Unit. The numbers reported may change on a daily basis due to the dynamic nature of offences being reported and cleared. Disorder data is derived from the CAD system and is static.

To a large extent, the data in this report are based on accumulated to date information. ***(Except for the Monthly Highlights which are based on static information (i.e.: a snap-shot in time).***

- For offences based on accumulated to date information, the number of offences recorded may be higher than previously reported (i.e. in previous statistical reports) due to late reporting. Although this does not greatly affect the number of occurrences for all offences, for some categories it may be as high as a 30-40% increase. The published data for the current period can therefore be expected to increase as time passes. As a result, readers should exercise caution when making comparisons between historical data and current data (i.e. previous year to this year) as data for the historic period will now include late reported offences, but data for the current period will not at this time. To achieve an effective comparison, current data should be evaluated against the originally published data for the historic period.
- Likewise, late reporting affects the number and percentage of offences cleared. Cases are often cleared months and sometimes years later. Consequently, clearances for previous years may appear to be much higher than those of the present year. Cases “cleared by charge” and those “cleared otherwise” are included in these totals.
- For offences based on “static” or “snap-shot” information, data totals will only reflect the number of offences reported in the original publication. They are not updated. Although late reporting may occur, and offences may continue to be cleared as time passes, these new events are not taken into account when preparing this statistical report.

A single incident may result in multiple offences, with each unique *Criminal Code* violation within the incident being counted as an offence. Furthermore, person crime offences are typically counted by the number of victims. Please note that offences are assigned to the month in which the offence "started", not the month they were reported or cleared. Also note that “attempted” incidents are included in these totals. For a more detailed explanation of the Offence counting procedure, please contact the Centralized Analysis Unit.

## Monthly Highlights – STATIC NUMBER COMPARISON

To reduce the impact of late reporting, comments on this page are a comparison between the CPS January 2015 Statistical Report and the CPS January 2014 Statistical Report. To achieve an effective comparison, current data should be evaluated against the originally published data for the historic period.

### JANUARY 2015

#### PERSON CRIME

- ◆ Reported **person crimes** for the month of January 2015 decreased 5.4% when compared to January 2014 (634 offences in January 2015 vs. 670 in January 2014).
- ◆ Total **robbery** offences for the month of January 2015 increased 15.8% when compared to January 2014 (88 offences in January 2015 vs. 76 in January 2014). In January 2014 there were:
  - 1 **financial robbery** (compared to 2 in January 2014);
  - 26 **commercial robberies** (compared to 22 in January 2014);
  - 49 **person robberies** (compared to 46 in January 2014); and
  - 12 **home invasions** (compared to 6 in January 2014).
- ◆ **Assaults** decreased 13.7% this month (453 offences in January 2015 vs. 525 in January 2014).
- ◆ **Sex offences** decreased 16.7% this month (35 **sex offences** in January 2015 compared to 42 in January 2014).

#### PROPERTY CRIME

- ◆ Reported **property crimes** this month increased 23.8% when compared to January 2014 (3445 offences in January 2015 compared to 2783 in January 2014).
- ◆ **Vehicle theft** (including attempts) increased 65.0% this month when compared to January 2014 (561 offences in January 2015 vs. 340 in January 2014).
- ◆ **Theft** offences increased 22.9% this month when compared to January 2014 (1664 offences in January 2015 vs. 1354 in January 2014).
- ◆ **Break and enter** offences this month increased 43.1% when compared to January 2014 (561 offences this month compared to 392 in January 2014).
  - **Residential break and enter** offences this month increased 11.9% when compared to January 2014 (198 offences in January 2015 vs. 177 in January 2014); and
  - **Commercial break and enter** offences increased 67.9% this month when compared to January 2014 (267 offences in January 2015 vs. 159 in January 2014).
- ◆ **Fraud related** offences increased 9.3% this month (199 offences in January 2015 vs. 182 in January 2014).

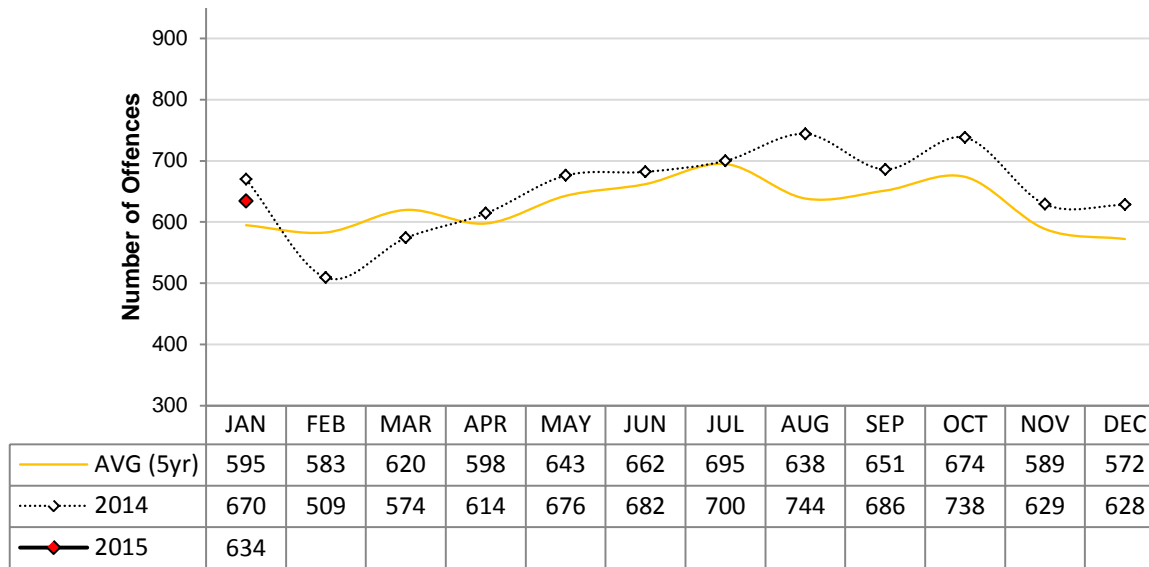
## Calgary Person Crime Statistics – STATIC NUMBERS

The static crime numbers on this page are derived from historical Calgary Police Service Monthly Statistical Reports. These statistics are used when writing the Monthly Highlights page in order to make a fair comparison using data which has not been allowed to increase due to late reporting of crime. Using static numbers allows us to compare crime levels at a specific point in time and make an accurate determination of increases or decreases. The cumulative crime numbers (pages 7 – 10) are statistics derived from the CPS Police Information Management System. P.I.M.S. cannot produce static numbers and therefore the cumulative numbers reflect any late reporting of crime. To achieve an effective comparison, current data should be evaluated against the originally published data for the historic period. \*Due to the dynamic nature of ongoing homicide investigations these numbers may have been manually updated to reflect the current homicide count. Due to manually updating, it's possible 1 or more homicides may be reflected within the assault category. The homicide counts are provided by the homicide unit.

### JANUARY 2015

	Current Month Number Of Offences			Year To Date Number Of Offences			% Cleared 2015
	2014	2015	% Change (2014-2015)	2014	2015	% Change (2014-2015)	
<b>PERSON CRIMES</b>							
<b>Homicide*</b>	2	3	50.0%	2	3	50.0%	0.0%
<b>Other Offences Causing Death</b>	0	0	N/A	0	0	N/A	N/A
<b>Attempted Homicide</b>	0	3	N/A	0	3	N/A	0.0%
<b>Sex Offences</b>	42	35	-16.7%	42	35	-16.7%	22.9%
<b>Robbery:</b>							
<i>Financial</i>	2	1	-50.0%	2	1	-50.0%	100.0%
<i>Commercial</i>	22	26	18.2%	22	26	18.2%	11.5%
<i>Person</i>	46	49	6.5%	46	49	6.5%	24.5%
<i>Home Invasion</i>	6	12	100.0%	6	12	100.0%	25.0%
<b>Total Robbery</b>	76	88	15.8%	76	88	15.8%	21.6%
<b>Assault:</b>							
<i>Level 3 - Aggravated</i>	9	7	-22.2%	9	7	-22.2%	28.6%
<i>Level 2 - Weapon/Bodily Harm</i>	115	122	6.1%	115	122	6.1%	57.4%
<i>Level 1 - Common Assault</i>	376	297	-21.0%	376	297	-21.0%	71.4%
<i>Assault Police Officer</i>	17	23	35.3%	17	23	35.3%	100.0%
<i>Discharge Firearm with Intent</i>	7	0	-100.0%	7	0	-100.0%	N/A
<i>Other Assaults</i>	1	4	300.0%	1	4	300.0%	75.0%
<b>Total Assault</b>	525	453	-13.7%	525	453	-13.7%	68.4%
<b>Misc Person Crimes</b>	25	52	108.0%	25	52	108.0%	50.0%
<b>TOTAL PERSON CRIMES</b>	<b>670</b>	<b>634</b>	<b>-5.4%</b>	<b>670</b>	<b>634</b>	<b>-5.4%</b>	<b>57.3%</b>

**Person Crime-Static Numbers  
YTD Jan 01 to Jan 31 2015**



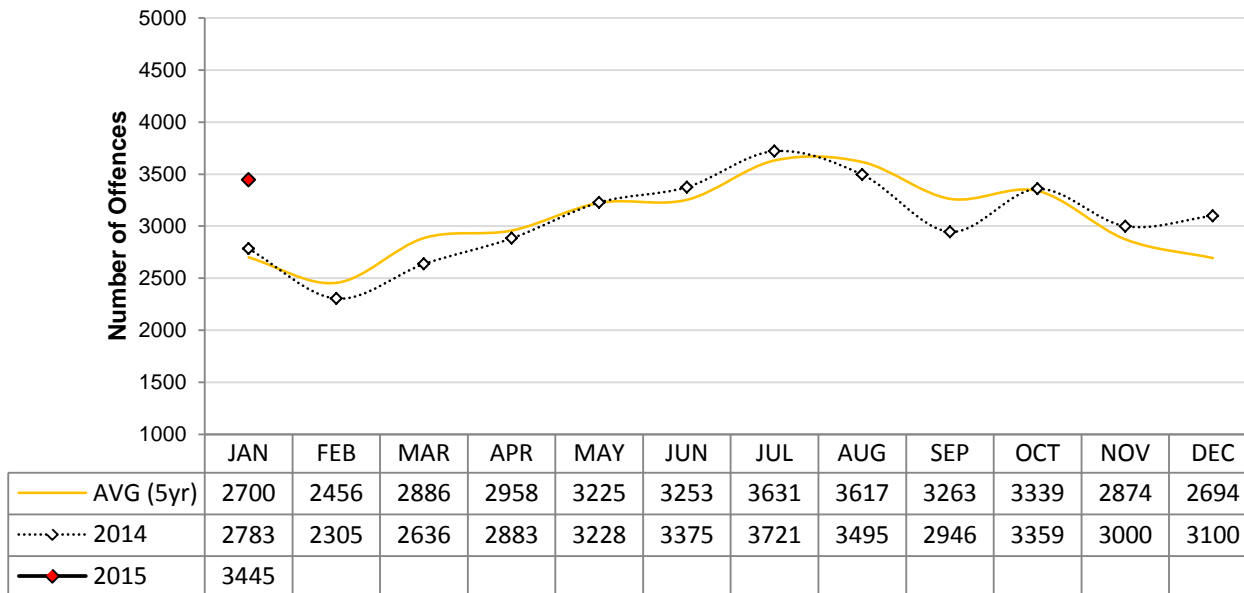
## Calgary Property Crime Statistics – STATIC NUMBERS

The static crime numbers on this page are derived from historical Calgary Police Service Monthly Statistical Reports. These statistics are used when writing the Monthly Highlights page in order to make a fair comparison using data which has not been allowed to increase due to late reporting of crime. Using static numbers allows us to compare crime levels at a specific point in time and make an accurate determination of increases or decreases. The cumulative crime numbers (pages 7 – 10) are statistics derived from the CPS Police Information Management System. P.I.M.S. cannot produce static numbers and therefore the cumulative numbers reflect any late reporting of crime. To achieve an effective comparison, current data should be evaluated against the originally published data for the historic period.

### JANUARY 2015

	Current Month Number Of Offences			Year To Date Number Of Offences			% Cleared 2015
	2014	2015	% Change (2014-2015)	2014	2015	% Change (2014-2015)	
<b>PROPERTY CRIMES</b>							
<b>Break and Enter:</b>							
<i>Residential B&amp;E</i>	177	198	11.9%	177	198	11.9%	8.1%
<i>Commercial B&amp;E</i>	159	267	67.9%	159	267	67.9%	8.2%
<i>Other B&amp;E</i>	55	93	69.1%	55	93	69.1%	5.4%
<i>Unlawfully in Residence</i>	1	3	200.0%	1	3	200.0%	100.0%
<b>Total Break and Enter</b>	<b>392</b>	<b>561</b>	<b>43.1%</b>	<b>392</b>	<b>561</b>	<b>43.1%</b>	<b>8.2%</b>
<b>Theft</b>	<b>1354</b>	<b>1664</b>	<b>22.9%</b>	<b>1354</b>	<b>1664</b>	<b>22.9%</b>	<b>25.8%</b>
<b>Vehicle Theft (including attempts)</b>	<b>340</b>	<b>561</b>	<b>65.0%</b>	<b>340</b>	<b>561</b>	<b>65.0%</b>	<b>6.6%</b>
<b>Fraud Related</b>	<b>182</b>	<b>199</b>	<b>9.3%</b>	<b>182</b>	<b>199</b>	<b>9.3%</b>	<b>37.2%</b>
<b>Other Property Crimes</b>	<b>515</b>	<b>460</b>	<b>-10.7%</b>	<b>515</b>	<b>460</b>	<b>-10.7%</b>	<b>21.3%</b>
<b>TOTAL PROPERTY CRIMES</b>	<b>2783</b>	<b>3445</b>	<b>23.8%</b>	<b>2783</b>	<b>3445</b>	<b>23.8%</b>	<b>19.9%</b>

**Property Crime-Static Numbers  
YTD Jan 01 to Jan 31 2015**



## Calgary Other Crime Statistics – STATIC NUMBERS

The static crime numbers on this page are derived from historical Calgary Police Service Monthly Statistical Reports. These statistics are used when writing the Monthly Highlights page in order to make a fair comparison using data which has not been allowed to increase due to late reporting of crime. Using static numbers allows us to compare crime levels at a specific point in time and make an accurate determination of increases or decreases. The cumulative crime numbers (pages 7 – 10) are statistics derived from the CPS Police Information Management System. P.I.M.S. cannot produce static numbers and therefore the cumulative numbers reflect any late reporting of crime. To achieve an effective comparison, current data should be evaluated against the originally published data for the historic period.

### JANUARY 2015

	Current Month Number Of Offences			Year To Date Number Of Offences			% Cleared 2015
	2014	2015	% Change (2014-2015)	2014	2015	% Change (2014-2015)	
<b>OTHER CRIMINAL CODE</b>							
Vice	1	0	N/A	1	0	N/A	-
Gaming	0	0	N/A	0	0	N/A	-
Weapon Related	68	97	42.6%	68	97	42.6%	97.9%
Misc	505	589	16.6%	505	589	16.6%	85.7%
<b>TOTAL OTHER CRIMINAL CODE</b>	<b>574</b>	<b>686</b>	<b>19.5%</b>	<b>574</b>	<b>686</b>	<b>19.5%</b>	<b>87.5%</b>
<b>TOTAL OVERALL CRIMINAL CODE (excluding traffic)</b>	<b>4027</b>	<b>4765</b>	<b>18.3%</b>	<b>4027</b>	<b>4765</b>	<b>18.3%</b>	<b>34.6%</b>
<b>SELECTED OTHER</b>							
Criminal Code Traffic	231	199	-13.9%	231	199	-13.9%	100.0%
Drugs	150	118	-21.3%	150	118	-21.3%	100.0%
<b>Selected Non Criminal Code:</b>							
<i>Accidental/Sudden Death</i>	49	60	22.4%	49	60	22.4%	N/A
<i>Missing Persons</i>	195	247	26.7%	195	247	26.7%	N/A
<i>Court Order</i>	88	112	27.3%	88	112	27.3%	N/A
<i>Domestic Information</i>	1015	1057	4.1%	1015	1057	4.1%	N/A
<i>Domestic Information Standby</i>	69	71	2.9%	69	71	2.9%	N/A
<b>Total Selected Non Criminal Code</b>	<b>1416</b>	<b>1547</b>	<b>9.3%</b>	<b>1416</b>	<b>1547</b>	<b>9.3%</b>	<b>N/A</b>
<b>Statutes (Federal/Provincial/Municipal)</b>	<b>77</b>	<b>75</b>	<b>-2.6%</b>	<b>77</b>	<b>75</b>	<b>-2.6%</b>	<b>98.7%</b>
<b>TOTAL SELECTED OTHER</b>	<b>1874</b>	<b>1939</b>	<b>3.5%</b>	<b>1874</b>	<b>1939</b>	<b>3.5%</b>	<b>99.9%</b>

### Number of Drug Offences Year To Date

		2011	2012	2013	2014	2015	Trend
Demand		72	64	70	100	66	
Supply		77	50	41	50	52	
<b>Total</b>		<b>149</b>	<b>114</b>	<b>111</b>	<b>150</b>	<b>118</b>	
	<b>Drug Type</b>						
	Cannabis	101	80	64	103	53	
	Cocaine/Crack	39	27	37	33	39	
	Heroin	0	3	2	4	6	
	All Other Drugs	9	4	8	10	20	
<b>Total</b>		<b>149</b>	<b>114</b>	<b>111</b>	<b>150</b>	<b>118</b>	

# Calgary Traffic Collisions – CUMULATIVE NUMBERS

JANUARY 2015

	Current Month # of Collisions			Year To Date # of Collisions			Year To Date Rate per 100,000 population		
	2013	2014	2015	2013	2014	2015	2013	2014	2015
Fatal Collisions	3	3	0	3	3	0	0.3	0.3	0.0
Injury Collisions	215	233	196	215	233	196	18.7	20.3	16.4
Property Damage Collisions	3624	4316	3985	3624	4316	3985	315.3	375.5	333.4
e-Collision Reports*	28	23	357	28	23	357	2.4	2.0	29.9
<b>Total Collisions</b>	<b>3870</b>	<b>4575</b>	<b>4538</b>	<b>3870</b>	<b>4575</b>	<b>4538</b>	<b>336.7</b>	<b>398.0</b>	<b>379.7</b>
<i>Parking Lot Collisions</i>	719	735	584	719	735	584	62.5	63.9	48.9
<b>Total Reportable Collisions</b>	<b>3151</b>	<b>3840</b>	<b>3954</b>	<b>3151</b>	<b>3840</b>	<b>3954</b>	<b>274.1</b>	<b>334.0</b>	<b>330.8</b>

Source: Cumulative data; PIMS (March 2015)

NOTE: Total Reportable Collisions exclude collisions along private roadways or public parking lots.

The number of reported traffic collisions may continue to increase over time. Due to data collection and reporting methods, totals for the current month may not be comparable to previous years.

\* e-Collision reporting is a data system which became operational in July 2009. At the time this report was published it was not possible to separate all collisions based on level of severity or to determine whether they occurred in a parking lot. Therefore, as e-Collision reports are completed and entered into the CPS records management system, it is determined whether or not they are reportable, and they are removed from the e-Collision count total and reclassified based on level of severity.

## Top Collision Locations and Primary Cause of Events

Number of Collisions	Location	Primary Cause of Event	Primary Direction of Travel
29	Deerfoot Trail NE & Memorial Drive E	Sideswipe – Same Direction	N
24	Deerfoot Trail NE & 16 Avenue NE	Rear End	N/S
23	Deerfoot Trail SE & 17 Avenue SE	Rear End	N/S
20	Deerfoot Trail SE & Glenmore Trail SE	Rear End	S
14	Bow Trail SW & Sarcee Trail SW	Rear End	N
14	16 Avenue NE & 19 Street NE	Rear End	W
14	Castleridge Blvd NE & Falconridge Blvd NE	Rear End	S
12	Deerfoot Trail NE & 64 Avenue NE	Rear End	S
12	McKnight Trail NE & 52 Street NE	Rear End	N
12	Deerfoot Trail NE & Beddington Trail NE	Struck Object	E

Source: Static data; PIMS (March 2015)

When interpreting these data, it is imperative to consider that these figures represent only the number of collisions and they do not account for associated traffic volumes, weather conditions, collision types, driver experience, or any other variables which may or may not be significant factors. The locations denoted might be associated with intersections, on/off ramps, or mid-block locations, which are in close proximity but not necessarily at the exact specified locations. Collisions occurring on private property, such as shopping mall parking lots have been excluded from the data in order to strictly assess intersection related collisions.

NOTE: This table excludes reports made through the e-Collision reporting system.

# Calgary Crime Statistics - CUMULATIVE NUMBERS

JANUARY 2015

<i>PERSON CRIMES</i>	Current Month			Year To Date			Accumulated To Date		
	Number Of Offences			Number Of Offences			Percentage Cleared		
	2013	2014	2015	2013	2014	2015	2013	2014	2015
<b>Homicide</b>									
1st Degree .....	0	2	2	0	2	2	-	50.0%	0.0%
2nd Degree .....	3	0	1	3	0	1	100.0%	-	0.0%
Manslaughter .....	0	0	0	0	0	0	-	-	-
Infanticide .....	0	0	0	0	0	0	-	-	-
<b>TOTAL</b>	<b>3</b>	<b>2</b>	<b>3</b>	<b>3</b>	<b>2</b>	<b>3</b>	<b>100.0%</b>	<b>50.0%</b>	<b>0.0%</b>
<b>Other Offences Causing Death</b>									
Criminal Negligence .....	0	0	0	0	0	0	-	-	-
Other Offences Causing Death .....	0	0	0	0	0	0	-	-	-
<b>TOTAL</b>	<b>0</b>	<b>0</b>	<b>0</b>	<b>0</b>	<b>0</b>	<b>0</b>	<b>-</b>	<b>-</b>	<b>-</b>
<b>Attempted Homicide</b>									
Attempted Murder .....	0	0	3	0	0	3	-	-	0.0%
Conspiracy To Commit .....	0	0	0	0	0	0	-	-	-
<b>TOTAL</b>	<b>0</b>	<b>0</b>	<b>3</b>	<b>0</b>	<b>0</b>	<b>3</b>	<b>-</b>	<b>-</b>	<b>0.0%</b>
<b>Sex Offences</b>									
Level 3 Aggravated Sexual Assault .....	0	0	0	0	0	0	-	-	-
Level 2 Weapon/Threat/Bodily Harm .....	0	2	0	0	2	0	-	50.0%	-
Level 1 Sexual Assault .....	44	53	32	44	53	32	29.5%	35.8%	25.0%
Indecent Acts .....	11	9	2	11	9	2	54.5%	66.7%	0.0%
Other .....	8	20	1	8	20	1	50.0%	35.0%	0.0%
<b>TOTAL</b>	<b>63</b>	<b>84</b>	<b>35</b>	<b>63</b>	<b>84</b>	<b>35</b>	<b>36.5%</b>	<b>39.3%</b>	<b>22.9%</b>
<b>Robbery</b>									
Financial .....	0	2	1	0	2	1	-	50.0%	100.0%
Commercial .....	15	22	26	15	22	26	60.0%	40.9%	11.5%
Person .....	56	48	49	56	48	49	30.4%	18.8%	24.5%
Home Invasion .....	4	7	12	4	7	12	0.0%	42.9%	25.0%
Robbery of Firearm .....	0	0	0	0	0	0	-	-	-
<b>TOTAL</b>	<b>75</b>	<b>79</b>	<b>88</b>	<b>75</b>	<b>79</b>	<b>88</b>	<b>34.7%</b>	<b>27.8%</b>	<b>21.6%</b>
<b>Assault</b>									
Level 3 - Aggravated .....	14	11	7	14	11	7	64.3%	81.8%	28.6%
Level 2 - Weapon/Bodily Harm .....	80	119	122	80	119	122	63.8%	60.5%	57.4%
Level 1 - Common Assault .....	264	395	297	264	395	297	78.0%	67.3%	71.4%
Assault Police Officer .....	15	17	23	15	17	23	93.3%	100.0%	100.0%
Discharge Firearm with Intent .....	1	7	0	1	7	0	0.0%	0.0%	-
Other Assaults .....	1	3	4	1	3	4	100.0%	66.7%	75.0%
<b>TOTAL</b>	<b>375</b>	<b>552</b>	<b>453</b>	<b>375</b>	<b>552</b>	<b>453</b>	<b>74.9%</b>	<b>66.3%</b>	<b>68.4%</b>
<b>Miscellaneous Person Crimes</b>									
Kidnapping/Abduction .....	2	2	2	2	2	2	0.0%	50.0%	0.0%
Forcible Confinement .....	12	11	11	12	11	11	91.7%	100.0%	72.7%
Extortion .....	0	3	8	0	3	8	-	66.7%	12.5%
Criminal Harassment .....	31	15	24	31	15	24	67.7%	66.7%	58.3%
Indecent/Harassing Calls .....	3	3	7	3	3	7	33.3%	0.0%	42.9%
<b>TOTAL</b>	<b>48</b>	<b>34</b>	<b>52</b>	<b>48</b>	<b>34</b>	<b>52</b>	<b>68.8%</b>	<b>70.6%</b>	<b>50.0%</b>
<b>TOTAL PERSON CRIMES</b>	<b>564</b>	<b>751</b>	<b>634</b>	<b>564</b>	<b>751</b>	<b>634</b>	<b>64.9%</b>	<b>59.4%</b>	<b>57.3%</b>



# Calgary Crime Statistics - CUMULATIVE NUMBERS

JANUARY 2015

<i><b>PROPERTY CRIMES</b></i>	<b>Current Month</b>			<b>Year To Date</b>			<b>Accumulated To Date</b>		
	<b>Number Of Offences</b>			<b>Number Of Offences</b>			<b>Percentage Cleared</b>		
	2013	2014	2015	2013	2014	2015	2013	2014	2015
<b>Break and Enter</b>									
Residential .....	137	187	198	137	187	198	25.5%	16.0%	8.1%
Commercial .....	133	174	267	133	174	267	7.5%	23.0%	8.2%
Other B&E .....	85	64	93	85	64	93	9.4%	6.3%	5.4%
Unlawfully in Residence .....	1	1	3	1	1	3	100.0%	100.0%	100.0%
B&E Firearms .....	0	0	0	0	0	0	-	-	-
<b>TOTAL</b>	<b>356</b>	<b>426</b>	<b>561</b>	<b>356</b>	<b>426</b>	<b>561</b>	<b>15.2%</b>	<b>17.6%</b>	<b>8.2%</b>
<b>Theft</b>									
Theft Over .....	20	21	21	20	21	21	20.0%	19.0%	14.3%
Theft Under .....	476	497	483	476	497	483	9.5%	11.5%	9.9%
Possession Stolen Property .....	66	93	93	66	93	93	100.0%	100.0%	100.0%
From Vehicle Over .....	6	2	7	6	2	7	0.0%	50.0%	0.0%
From Vehicle Under .....	573	569	670	573	569	670	3.0%	4.0%	1.5%
Shoplift Over .....	0	1	2	0	1	2	-	100.0%	0.0%
Shoplift Under .....	274	339	388	274	339	388	72.3%	72.9%	70.9%
<b>TOTAL</b>	<b>1415</b>	<b>1522</b>	<b>1664</b>	<b>1415</b>	<b>1522</b>	<b>1664</b>	<b>23.3%</b>	<b>28.1%</b>	<b>25.8%</b>
<b>Vehicle Theft</b>									
Theft Over .....	335	311	456	335	311	456	7.8%	9.0%	5.7%
Theft Under .....	36	44	84	36	44	84	13.9%	22.7%	13.1%
Attempted .....	7	11	21	7	11	21	0.0%	0.0%	0.0%
<b>TOTAL</b>	<b>378</b>	<b>366</b>	<b>561</b>	<b>378</b>	<b>366</b>	<b>561</b>	<b>8.2%</b>	<b>10.4%</b>	<b>6.6%</b>
<b>Fraud Related</b>									
False Pretences .....	4	2	0	4	2	0	50.0%	100.0%	-
Forgery/Uttering .....	41	51	22	41	51	22	80.5%	64.7%	59.1%
Forgery-Credit Card .....	17	27	23	17	27	23	11.8%	14.8%	8.7%
Impersonation .....	31	42	31	31	42	31	54.8%	42.9%	71.0%
Food/Lodging/Transportation .....	16	24	25	16	24	25	68.8%	62.5%	56.0%
Defraud Person (Under/Over) .....	151	153	88	151	153	88	39.1%	34.6%	19.3%
Other Fraud .....	3	18	10	3	18	10	100.0%	77.8%	60.0%
<b>TOTAL</b>	<b>263</b>	<b>317</b>	<b>199</b>	<b>263</b>	<b>317</b>	<b>199</b>	<b>48.3%</b>	<b>43.8%</b>	<b>37.2%</b>
<b>Other Property Crimes</b>									
Mischief Over \$5,000 .....	7	6	8	7	6	8	28.6%	33.3%	12.5%
Mischief Under \$5,000 .....	202	211	186	202	211	186	26.7%	28.4%	20.4%
Other Mischief .....	79	96	63	79	96	63	86.1%	87.5%	73.0%
Vehicle Damage .....	213	248	190	213	248	190	7.5%	9.3%	6.3%
Arson .....	11	6	13	11	6	13	27.3%	33.3%	7.7%
<b>TOTAL</b>	<b>512</b>	<b>567</b>	<b>460</b>	<b>512</b>	<b>567</b>	<b>460</b>	<b>27.9%</b>	<b>30.2%</b>	<b>21.3%</b>
<b>TOTAL PROPERTY CRIMES</b>	<b>2924</b>	<b>3198</b>	<b>3445</b>	<b>2924</b>	<b>3198</b>	<b>3445</b>	<b>23.4%</b>	<b>27.2%</b>	<b>19.9%</b>

# Calgary Crime Statistics - CUMULATIVE NUMBERS

JANUARY 2015

<i><b>OTHER CRIMINAL CODE</b></i>	<b>Current Month</b>			<b>Year To Date</b>			<b>Accumulated To Date</b>		
	<b>Number Of Offences</b>			<b>Number Of Offences</b>			<b>Percentage Cleared</b>		
	2013	2014	2015	2013	2014	2015	2013	2014	2015
<b>Vice</b>									
Impede/Communicate .....	0	1	0	0	1	0	-	100.0%	-
Live on Avails .....	3	1	0	3	1	0	100.0%	100.0%	-
Bawdy House .....	1	1	0	1	1	0	100.0%	100.0%	-
Procure/Solicit .....	2	3	0	2	3	0	50.0%	100.0%	-
<b>TOTAL</b>	<b>6</b>	<b>6</b>	<b>0</b>	<b>6</b>	<b>6</b>	<b>0</b>	<b>83.3%</b>	<b>100.0%</b>	<b>-</b>
<b>Gaming</b>									
Gaming House .....	0	0	0	0	0	0	-	-	-
Betting .....	0	0	0	0	0	0	-	-	-
Lotteries/Games .....	0	0	0	0	0	0	-	-	-
Other .....	0	0	0	0	0	0	-	-	-
<b>TOTAL</b>	<b>0</b>	<b>0</b>	<b>0</b>	<b>0</b>	<b>0</b>	<b>0</b>	<b>-</b>	<b>-</b>	<b>-</b>
<b>Weapon Related</b>									
Prohibited .....	9	17	13	9	17	13	100.0%	100.0%	100.0%
Restricted .....	7	21	34	7	21	34	100.0%	100.0%	100.0%
Explosives .....	1	0	0	1	0	0	100.0%	-	-
Possess Prohibited .....	0	0	0	0	0	0	-	-	-
Use Firearm in Offence .....	0	0	0	0	0	0	-	-	-
FAC Related .....	5	5	11	5	5	11	100.0%	100.0%	100.0%
Other .....	39	34	39	39	34	39	97.4%	97.1%	94.9%
<b>TOTAL</b>	<b>61</b>	<b>77</b>	<b>97</b>	<b>61</b>	<b>77</b>	<b>97</b>	<b>98.4%</b>	<b>98.7%</b>	<b>97.9%</b>
<b>Miscellaneous</b>									
Counterfeiting .....	12	19	45	12	19	45	0.0%	0.0%	6.7%
Obstruct Peace Officer .....	45	35	45	45	35	45	97.8%	100.0%	95.6%
Bail Violation/Fail to attend .....	270	304	314	270	304	314	100.0%	100.0%	99.7%
Fail to comply with Probation .....	49	48	58	49	48	58	100.0%	100.0%	98.3%
Escape Custody/UAL .....	14	12	11	14	12	11	100.0%	91.7%	90.9%
Attempt to commit/accessory .....	3	3	1	3	3	1	100.0%	66.7%	100.0%
Miscellaneous .....	123	140	115	123	140	115	78.0%	81.4%	67.8%
<b>TOTAL</b>	<b>516</b>	<b>561</b>	<b>589</b>	<b>516</b>	<b>561</b>	<b>589</b>	<b>92.2%</b>	<b>91.6%</b>	<b>85.7%</b>
<b>TOTAL OTHER CRIMINAL CODE</b>	<b>583</b>	<b>644</b>	<b>686</b>	<b>583</b>	<b>644</b>	<b>686</b>	<b>92.8%</b>	<b>92.5%</b>	<b>87.5%</b>
<b>TOTAL CRIMINAL CODE (EXCL. TRAFFIC)</b>	<b>4071</b>	<b>4593</b>	<b>4765</b>	<b>4071</b>	<b>4593</b>	<b>4765</b>	<b>39.1%</b>	<b>41.2%</b>	<b>34.6%</b>

# Calgary Crime Statistics - CUMULATIVE NUMBERS

JANUARY 2015

<i><b>SELECTED OTHER</b></i>	<b>Current Month</b>			<b>Year To Date</b>			<b>Accumulated To Date</b>		
	<b>Number Of Offences</b>			<b>Number Of Offences</b>			<b>Percentage Cleared</b>		
	2013	2014	2015	2013	2014	2015	2013	2014	2015
<b>Criminal Code Traffic</b>									
Impaired Causing Death .....	0	0	0	0	0	0	-	-	-
Impaired Causing Bodily Harm .....	0	0	0	0	0	0	-	-	-
Impaired > .08 .....	99	89	70	99	89	70	100.0%	100.0%	100.0%
Impaired Driving.....	123	109	93	123	109	93	99.2%	100.0%	100.0%
Fail/Refuse .....	31	24	26	31	24	26	100.0%	100.0%	100.0%
Dangerous Causing Death .....	1	0	0	1	0	0	100.0%	-	-
Dangerous Operation Causing Harm .....	1	0	0	1	0	0	100.0%	-	-
Dangerous Operation of Motor Vehicle .....	8	12	10	8	12	10	100.0%	100.0%	100.0%
Impaired Driving (Drugs) .....	1	0	0	1	0	0	100.0%	-	-
<b>TOTAL</b>	<b>264</b>	<b>234</b>	<b>199</b>	<b>264</b>	<b>234</b>	<b>199</b>	<b>99.6%</b>	<b>100.0%</b>	<b>100.0%</b>
<b>Drugs</b>									
CDSA/NCA/FDA Possession .....	75	109	66	75	109	66	100.0%	100.0%	100.0%
CDSA/NCA/FDA Trafficking .....	10	22	13	10	22	13	100.0%	100.0%	100.0%
CDSA/NCA/FDA Possession for Purpose .....	39	34	38	39	34	38	100.0%	100.0%	100.0%
CDSA/NCA Importation/Export .....	0	0	0	0	0	0	-	-	-
CDSA/NCA Cultivation/Production .....	3	0	1	3	0	1	100.0%	-	100.0%
CDSA/NCA/FDA Prop./Proc. from Trafficking	0	0	0	0	0	0	-	-	-
<b>TOTAL</b>	<b>127</b>	<b>165</b>	<b>118</b>	<b>127</b>	<b>165</b>	<b>118</b>	<b>100.0%</b>	<b>100.0%</b>	<b>100.0%</b>
<b>Selected Non Criminal Code Incidents</b>									
Accidental/Sudden Death.....	78	50	60	78	50	60	N/A	N/A	N/A
Missing Persons .....	188	200	247	188	200	247	N/A	N/A	N/A
Court Order.....	103	91	112	103	91	112	N/A	N/A	N/A
Domestic Information.....	1035	1053	1057	1035	1053	1057	N/A	N/A	N/A
Domestic Information Standby .....	94	72	71	94	72	71	N/A	N/A	N/A
<b>TOTAL</b>	<b>1498</b>	<b>1466</b>	<b>1547</b>	<b>1498</b>	<b>1466</b>	<b>1547</b>	<b>N/A</b>	<b>N/A</b>	<b>N/A</b>
<b>Statutes</b>									
Federal .....	21	26	25	21	26	25	100.0%	100.0%	100.0%
Provincial .....	47	50	46	47	50	46	100.0%	98.0%	97.8%
Municipal .....	11	5	4	11	5	4	100.0%	100.0%	100.0%
<b>TOTAL</b>	<b>79</b>	<b>81</b>	<b>75</b>	<b>79</b>	<b>81</b>	<b>75</b>	<b>100.0%</b>	<b>98.8%</b>	<b>98.7%</b>
<b>TOTAL SELECTED OTHER</b>	<b>1968</b>	<b>1946</b>	<b>1939</b>	<b>1968</b>	<b>1946</b>	<b>1939</b>	<b>99.9%</b>	<b>99.9%</b>	<b>99.9%</b>