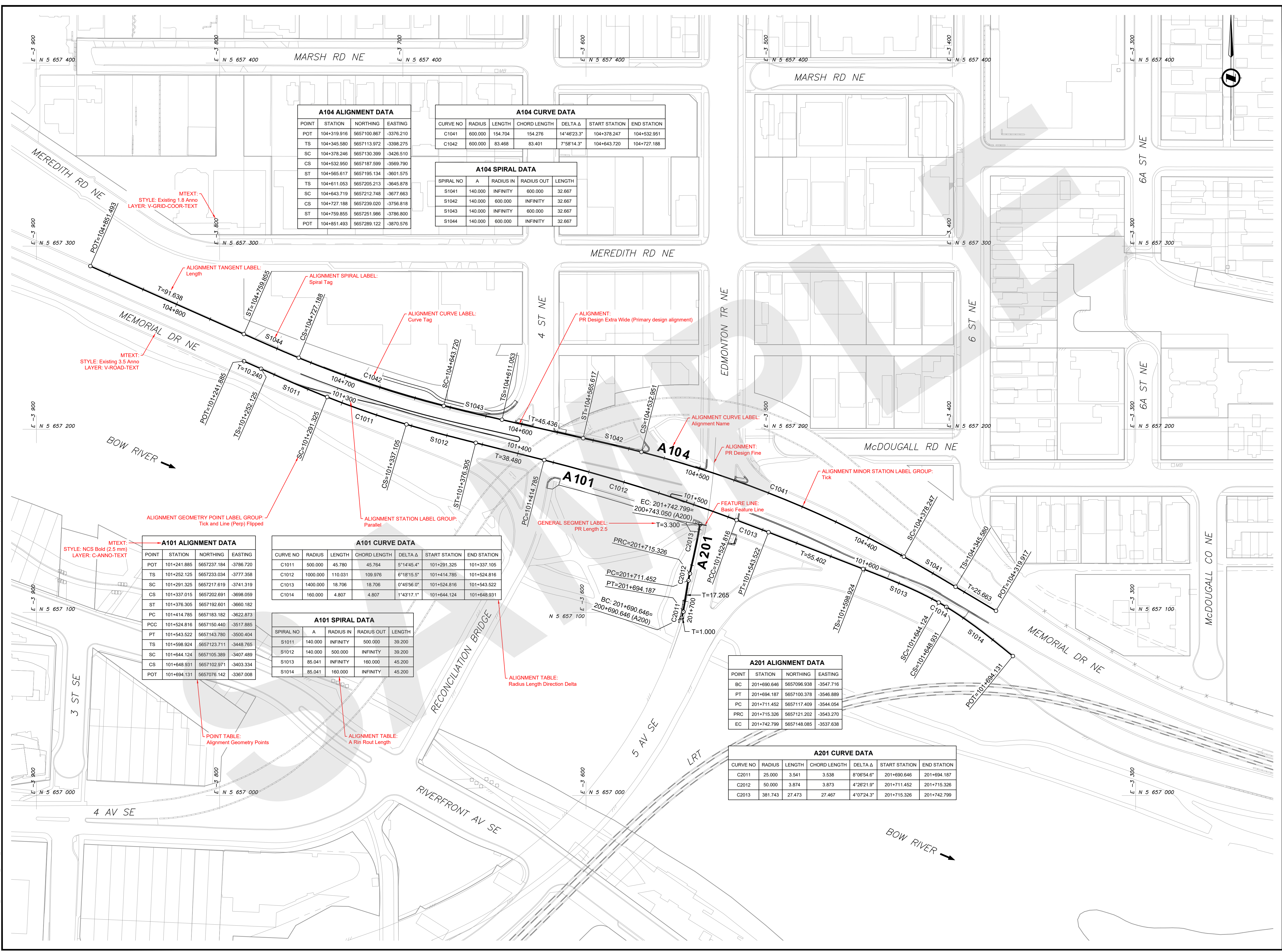


FILE: Z:\SPECIALTY\CONTRACT_SEED_DIRECTORIES\CONSTRUCTION DRAFTING STANDARDS AND TEMPLATES\SEED\PROJECT\12345678C-102.DWG [DATE: Monday, November 21, 2022 10:28:50 AM]



A104 ALIGNMENT DATA

POINT	STATION	NORTHING	EASTING
POT	104+319.916	5657100.867	-3376.210
TS	104+345.580	5657113.972	-3398.275
SC	104+378.246	5657130.399	-3426.510
CS	104+532.950	5657187.599	-3569.790
ST	104+565.617	5657195.134	-3601.575
TS	104+611.053	5657205.213	-3645.878
SC	104+643.719	5657212.748	-3677.663
CS	104+727.188	5657239.020	-3756.818
ST	104+759.855	5657251.986	-3786.800
POT	104+851.493	5657289.122	-3870.576

A104 CURVE DATA

CURVE NO	RADIUS	LENGTH	CHORD LENGTH	DELTA A	START STATION	END STATION
C1041	600.000	154.704	154.276	14°46'23.3"	104+378.247	104+532.951
C1042	600.000	83.468	83.401	7°58'14.3"	104+643.720	104+727.188

A104 SPIRAL DATA

SPIRAL NO	A	RADIUS IN	RADIUS OUT	LENGTH
S1041	140.000	INFINITY	600.000	32.667
S1042	140.000	600.000	INFINITY	32.667
S1043	140.000	INFINITY	600.000	32.667
S1044	140.000	600.000	INFINITY	32.667

A101 ALIGNMENT DATA

POINT	STATION	NORTHING	EASTING
POT	101+241.885	5657237.184	-3786.720
TS	101+252.125	5657233.034	-3777.358
SC	101+291.325	5657217.619	-3741.319
CS	101+337.015	5657202.691	-3698.059
ST	101+376.305	5657192.601	-3660.182
PC	101+414.785	5657183.182	-3622.873
PCC	101+524.816	5657150.440	-3517.885
PT	101+543.522	5657143.780	-3500.404
TS	101+598.924	5657123.711	-3448.765
SC	101+644.124	5657105.389	-3407.489
CS	101+648.931	5657102.971	-3403.334
POT	101+694.131	5657076.142	-3367.008

A101 CURVE DATA

CURVE NO	RADIUS	LENGTH	CHORD LENGTH	DELTA A	START STATION	END STATION
C1011	500.000	45.790	45.764	5°14'45.4"	101+291.325	101+337.015
C1012	1000.000	110.031	109.976	6°18'15.5"	101+414.785	101+524.816
C1013	1400.000	18.706	18.706	0°45'56.0"	101+524.816	101+543.522
C1014	160.000	4.807	4.807	1°43'17.1"	101+644.124	101+648.931

A101 SPIRAL DATA

SPIRAL NO	A	RADIUS IN	RADIUS OUT	LENGTH
S1011	140.000	INFINITY	500.000	39.200
S1012	140.000	500.000	INFINITY	39.200
S1013	85.041	INFINITY	160.000	45.200
S1014	85.041	160.000	INFINITY	45.200

A201 ALIGNMENT DATA

POINT	STATION	NORTHING	EASTING
BC	201+690.646	5657096.938	-3547.716
PT	201+694.187	5657100.378	-3546.889
PC	201+711.452	5657117.409	-3544.054
PRC	201+715.326	5657121.202	-3543.270
EC	201+742.799	5657148.085	-3537.638

A201 CURVE DATA

CURVE NO	RADIUS	LENGTH	CHORD LENGTH	DELTA A	START STATION	END STATION
C2011	25.000	3.541	3.538	8°06'54.6"	201+690.646	201+694.187
C2012	50.000	3.874	3.873	4°28'21.9"	201+711.452	201+715.326
C2013	381.743	27.473	27.467	4°07'24.3"	201+715.326	201+742.799

NOTES

- ALL PIPE SIZES ARE IN MILLIMETRES AND ALL DIMENSIONS ARE IN METRES UNLESS OTHERWISE NOTED.
- ALL COORDINATES AND DISTANCES ARE BASED ON 3TM COORDINATE SYSTEM (NAD 83).

Click Before You Dig

NAD 83 COORDINATES

ISSUED FOR REVIEW

NO.	DESCRIPTION	DATE	BY	APPD
A	ISSUED FOR REVIEW	2019-01-13	DEF	GHI

PERMIT: _____ SEAL: _____

DESIGNED	BY	DATE
ABC	ABC	2019-01-13
DRAWN	DEF	2019-01-13
DEF	DEF	2019-01-13
CHECKED	GHI	2019-01-13
GHI	GHI	2019-01-13

SCALE: 1:1000

Calgary CONSULTANT'S LOGO

PROJECT
THE CITY OF CALGARY
CONSTRUCTION DRAFTING STANDARDS AND TEMPLATES
 SEC. 14, 15, 22 - TWP. 24 - RGE. 1 - W 5th M

SHEET TITLE
CONTRACT SET
ALIGNMENT
SAMPLE SHEET

FILE NO.	ENG DWG NO.		
12345678C-102.dwg	012.3456.005		
SHEET ID.	SHEET NO.		
C-102	005		
DRAWN	BY	DATE	PROFILE NO.

ISC: _____ SHEET SIZE ANSI D 25 mm

THIS DRAWING SAMPLE IS INTENDED TO ILLUSTRATE THE NEW CAD STANDARDS AND ARE FOR REFERENCE PURPOSES ONLY. PLEASE CONFIRM WITH YOUR APPROPRIATE CITY OF CALGARY CONTACT FOR SPECIFIC CONTENT REQUIREMENTS.