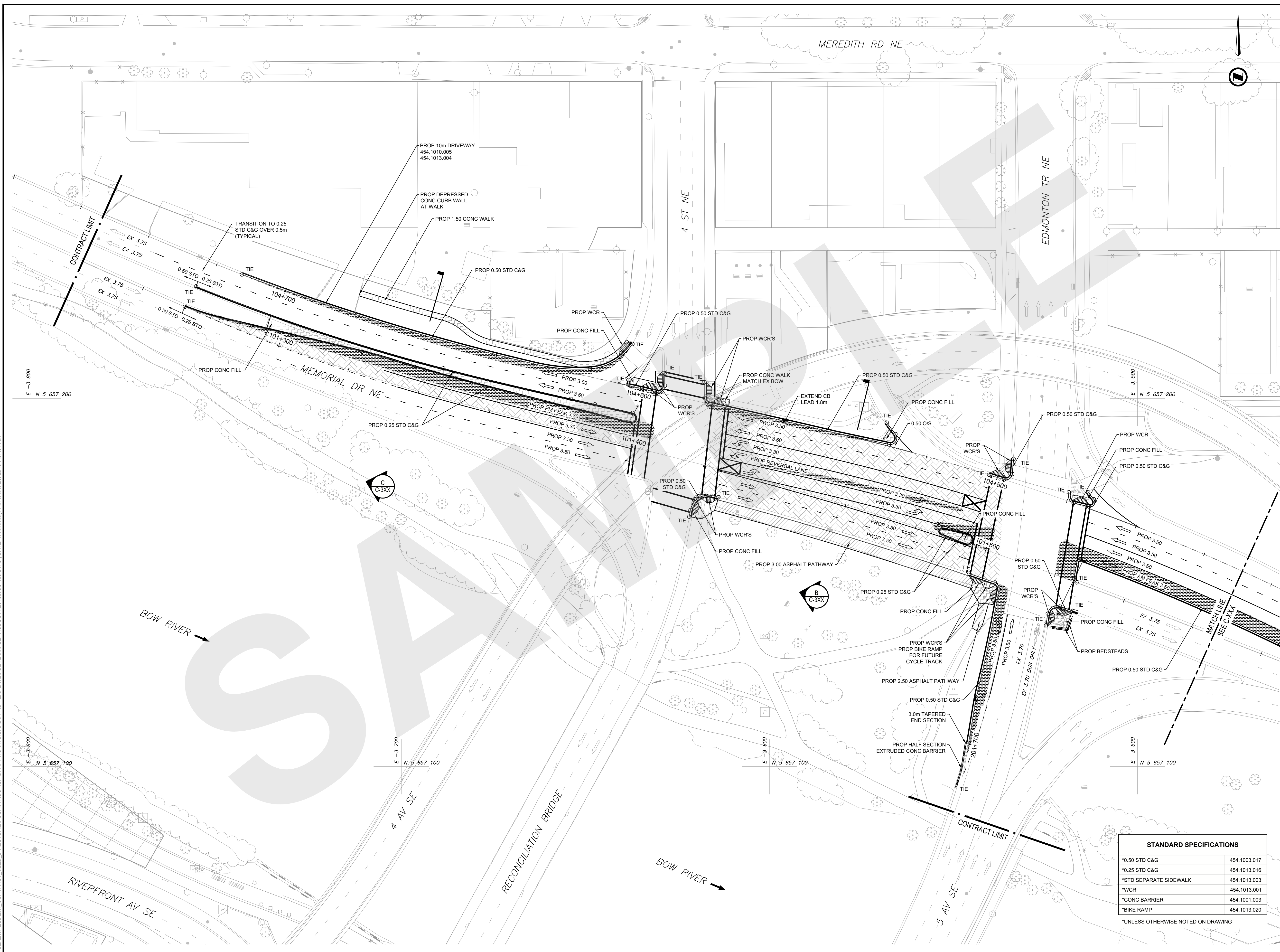


FILE: Z:\SPEC\ALT1.CONTRACT.SET\DIRECTORIES\CONSTRUCTION DRAFTING STANDARDS AND TEMPLATES\DEV\INPL\PRODUCT\12345678C-103.DWG | DATE: Wednesday, November 20, 2019 7:37:04 AM

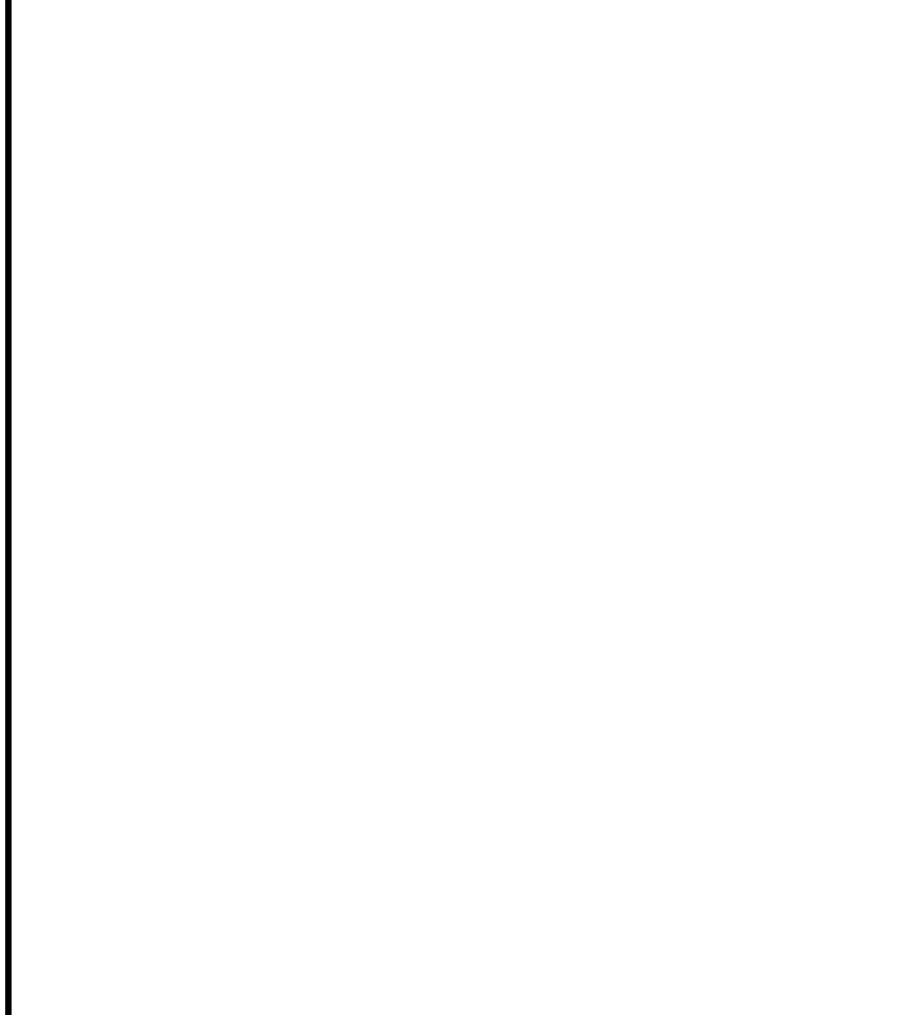


### LEGEND

	PROPOSED ASPHALT PAVEMENT
	PROPOSED ASPHALT PATHWAY
	PROPOSED CONCRETE
	PROPOSED MILL & OVERLAY

### NOTES

- ALL PIPE SIZES ARE IN MILLIMETRES AND ALL DIMENSIONS ARE IN METRES UNLESS OTHERWISE NOTED.
- ALL COORDINATES AND DISTANCES ARE BASED ON 3TM COORDINATE SYSTEM (NAD 83).



**ALBERTA ONECALL** **NAD 83 COORDINATES**

**ISSUED FOR REVIEW**

NO.	DESCRIPTION	DATE	BY	APPD
A	ISSUED FOR REVIEW	2019-01-13	DEF	GHI

DESIGNED	ABC	2019-01-13
DRAWN	DEF	2019-01-13
CHECKED	GHI	2019-01-13

SCALE: 1:500

**Calgary** **CONSULTANT'S LOGO**

**PROJECT**  
**THE CITY OF CALGARY**  
**CONSTRUCTION DRAFTING STANDARDS AND TEMPLATES**  
 SEC: 14, 15, 22 - TWP: 24 - RGE: 1 - W 5th M

**SHEET TITLE**  
**CONTRACT SET**  
**PAVEMENT PLAN**  
**SAMPLE SHEET**

FILE NO. 12345678C-103.dwg	ENG DWG NO. 012.3456.008	
SHEET ID. <b>C-103</b>	SHEET NO. <b>008</b>	
DRAWN	DATE	PROFILE NO.

**STANDARD SPECIFICATIONS**

*0.50 STD C&G	454.1003.017
*0.25 STD C&G	454.1013.016
*STD SEPARATE SIDEWALK	454.1013.003
*WCR	454.1013.001
*CONC BARRIER	454.1001.003
*BIKE RAMP	454.1013.020

\*UNLESS OTHERWISE NOTED ON DRAWING

THIS DRAWING SAMPLE IS INTENDED TO ILLUSTRATE THE NEW CAD STANDARDS AND ARE FOR REFERENCE PURPOSES ONLY. PLEASE CONFIRM WITH YOUR APPROPRIATE CITY OF CALGARY CONTACT FOR SPECIFIC CONTENT REQUIREMENTS.