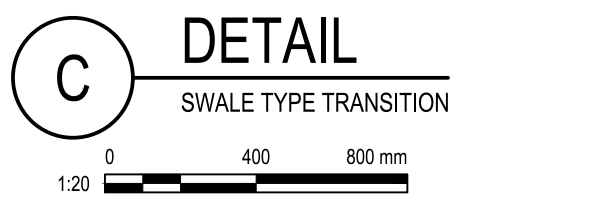
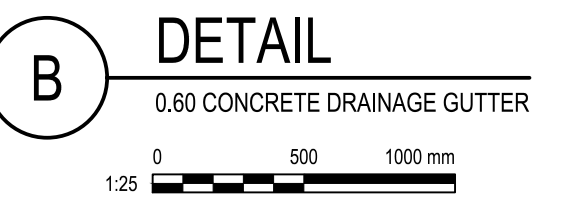
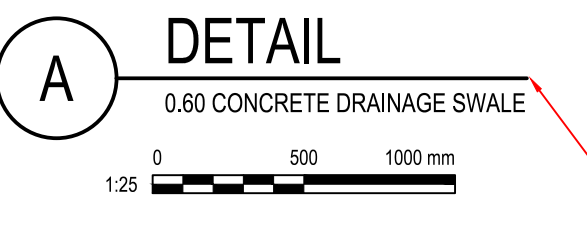
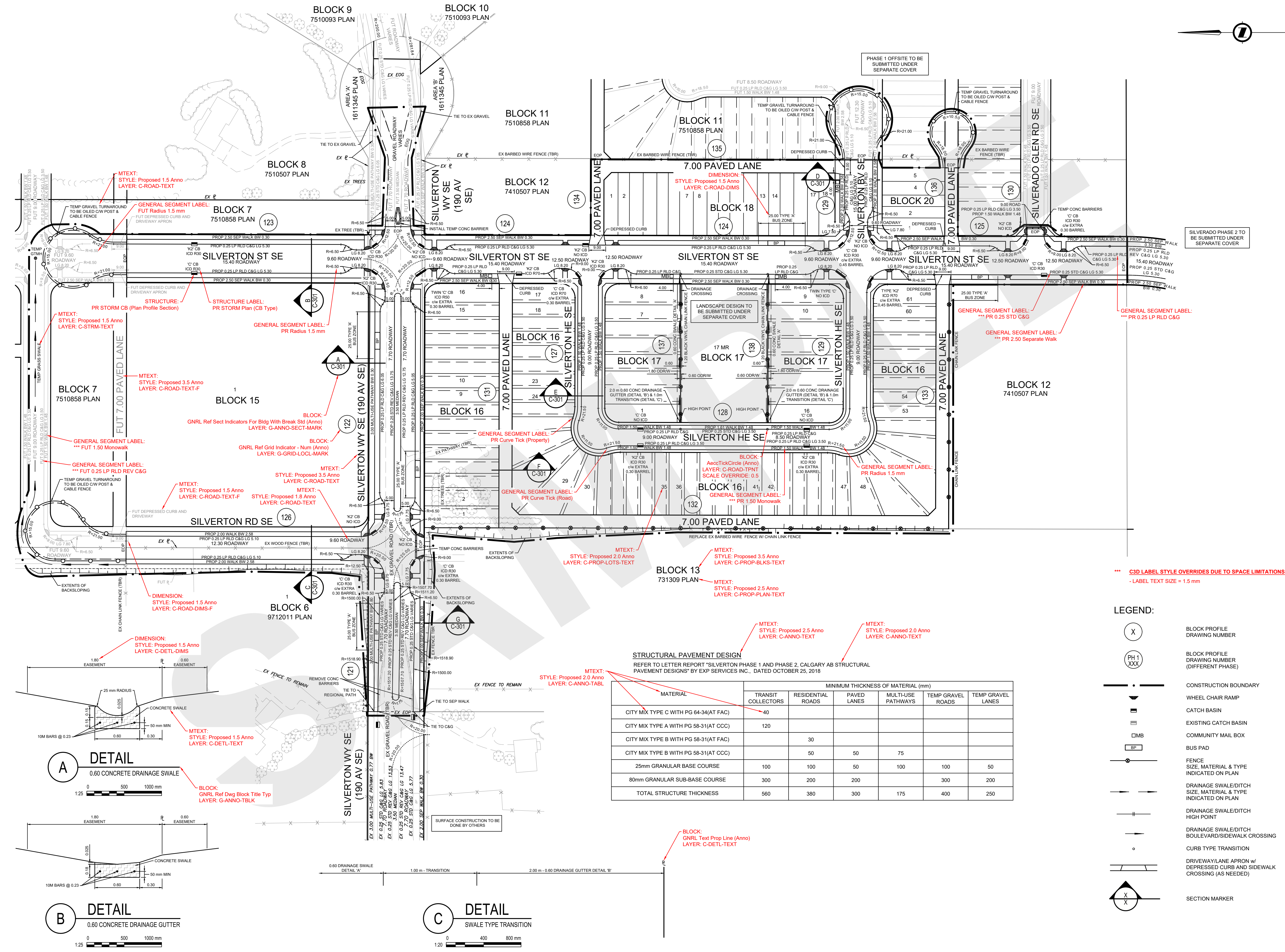


FILE: Z:\SPEC\ALTI_CONTRACT_SEED_DIRECTORIES\CONSTRUCTION DRAFTING STANDARDS AND TEMPLATES\DEV\SNPL_EXP-2\PRODUCT\12345678C-103.DWG | DATE: Thursday, December 05, 2019 11:07:46 AM



STRUCTURAL PAVEMENT DESIGN
REFER TO LETTER REPORT 'SILVERTON PHASE 1 AND PHASE 2, CALGARY AB STRUCTURAL PAVEMENT DESIGNS' BY EXP SERVICES INC., DATED OCTOBER 25, 2018

MATERIAL	MINIMUM THICKNESS OF MATERIAL (mm)				
	TRANSIT COLLECTORS	RESIDENTIAL ROADS	PAVED LANES	MULTI-USE PATHWAYS	TEMP GRAVEL ROADS
CITY MIX TYPE C WITH PG 64-34(AT FAC)	40				
CITY MIX TYPE A WITH PG 58-31(AT CCC)	120				
CITY MIX TYPE B WITH PG 58-31(AT FAC)		30			
CITY MIX TYPE B WITH PG 58-31(AT CCC)		50	50	75	
25mm GRANULAR BASE COURSE	100	100	50	100	50
80mm GRANULAR SUB-BASE COURSE	300	200	200		300
TOTAL STRUCTURE THICKNESS	560	380	300	175	250

LEGEND:

	BLOCK PROFILE DRAWING NUMBER
	BLOCK PROFILE DRAWING NUMBER (DIFFERENT PHASE)
	CONSTRUCTION BOUNDARY
	WHEEL CHAIR RAMP
	CATCH BASIN
	EXISTING CATCH BASIN
	COMMUNITY MAIL BOX
	BUS PAD
	FENCE, MATERIAL & TYPE INDICATED ON PLAN
	DRAINAGE SWALE/DITCH SIZE, MATERIAL & TYPE INDICATED ON PLAN
	DRAINAGE SWALE/DITCH HIGH POINT
	DRAINAGE SWALE/DITCH BOULEVARD/SIDEWALK CROSSING
	CURB TYPE TRANSITION
	DRIVEWAY/LANE APRON w/ DEPRESSED CURB AND SIDEWALK CROSSING (AS NEEDED)
	SECTION MARKER

NOTES

GENERAL NOTES (GN):

- ALL PIPE SIZES ARE IN MILLIMETRES AND ALL DIMENSIONS ARE IN METRES UNLESS OTHERWISE NOTED.
- ALL COORDINATES AND DISTANCES ARE BASED ON 3TM COORDINATE SYSTEM (NAD 83).
- ALL CONSTRUCTION AND MATERIALS TO BE IN ACCORDANCE WITH CURRENT CITY OF CALGARY SPECIFICATIONS.
- NO CONSTRUCTION UNTIL ALL APPROPRIATE REGULATORY APPROVALS ARE OBTAINED.
- ALL PLANS SUBJECT TO TERMS OF THE DEVELOPMENT AGREEMENT/PERMIT AND THE CONTRACT DOCUMENTS.
- ANY ERRORS OR DISCREPANCIES TO BE REPORTED TO THE ENGINEER PRIOR TO COMMENCEMENT OF CONSTRUCTION.
- ALL FILL MATERIAL SHALL BE PLACED AND COMPACTED TO CITY OF CALGARY SPECIFICATIONS.
- ALL ELEVATIONS ARE GEODETIC WITH DATUM=0.
- CONTRACTOR TO BE RESPONSIBLE FOR LOCATION AND ALIGNMENT OF ALL EXISTING UTILITIES.
- CONTRACTOR TO TAKE CARE WHEN WORKING NEAR EXISTING INFRASTRUCTURE.
- CONTRACTOR TO COORDINATE ALL CONSTRUCTION WITH ASSOCIATED OWNER(S) WHEN WORKING NEAR EXISTING INFRASTRUCTURE.
- EXISTING SURFACE FEATURES TO BE REINSTATED TO CONDITIONS PRECEDING CONSTRUCTION WHERE EXISTING CONDITIONS WILL BE MAINTAINED.
- COMBINED FACTOR APPLIED=0.999736 (1/0.000264).
- ALL NORTHING-EASTING COORDINATES ARE AT SEA LEVEL.

ROAD AND SIDEWALK NOTES (RSN):

- THE LOCATION OF ALL EXISTING INFRASTRUCTURE (HORIZONTAL AND VERTICAL) TO BE CONFIRMED IN THE FIELD BEFORE CONSTRUCTION BEGINS.
- ALL EXISTING ROADS ARE OPERATIONAL AND MUST BE MAINTAINED AS SUCH DURING CONSTRUCTION OR SUITABLE ALTERNATE ACCESS CONDITIONS PROVIDED.
- NO BACK-SLOPING PERMITTED ON ANY ADJACENT PROPERTY WITHOUT WRITTEN CONSENT FROM THE ASSOCIATED LAND OWNER.
- DEPRESSED CURB REQUIRED AT ALL CMB LOCATIONS NOT ADJACENT TO A SIDEWALK.
- ALL PAVEMENT STRUCTURE CONDITIONS ARE AS PER THE RELATED PAVEMENT STRUCTURE DESIGNS PREPARED BY THE GEOTECHNICAL ENGINEER.
- ALL PUBLIC OPEN SPACE (MRI) AND BOULEVARD/MEDIAN LANDSCAPE DESIGN FEATURES TO BE SUBMITTED UNDER SEPARATE COVER.
- ALL EXISTING SURFACE FEATURES SHOWN ARE PART OF THE OTHER SCOPE OF DEVELOPMENT AND INCLUDED IN SEPARATE DRAWING SUBMISSION SETS.
- SWALE DRAINAGE CROSSING AS PER C.O.C SPEC 454.1013.015 FOR SEPARATE WALK OR REGIONAL PATHWAY AND 454.1013.016 FOR MONOLITHIC WALK.
- SIDEWALK CROSSING AS PER C.O.C SPEC 454.1013.005 FOR MONOLITHIC WALK AND 454.1013.004 FOR SEPARATE WALK.
- CONCRETE SWALES SHALL BE LOCATED ON PRIVATE PROPERTY.
- ALL FENCES AND THEIR ASSOCIATED COMPONENTS SHALL BE LOCATED ON PRIVATE PROPERTY.
- WOOD SCREEN FENCE AS PER C.O.C SPEC 454.1001.038 AND POST AND CABLE FENCE AS PER C.O.C SPEC 454.1001.013.
- ALL ROAD CROSS SECTIONS AS PER CITY OF CALGARY DESIGN GUIDELINES FOR SUBDIVISION SERVICING 2014 OR APPROVED OUTLINE PLAN.

exp.

ALBERTA ONECALL

NAD 83 COORDINATES

ISSUED FOR PRELIMINARY APPROVAL

NO.	DESCRIPTION	DATE	BY	APPD
0	ISSUED FOR PRELIMINARY APPROVAL	2018-11-14	RCM	RG

PERMIT NO. _____ SEAL _____

DESIGNED	BY	DATE
RCM	RCM	2018-07-09
DRAWN	BY	DATE
LH	LH	2018-07-09
CHECKED	BY	DATE
RG	RG	2018-09-01

SCALE: 1:1000

DEVELOPER'S LOGO

PROJECT
THE CITY OF CALGARY
CONSTRUCTION DRAFTING STANDARDS AND TEMPLATES
SEC: 22 - TWP: 22 - RGE: 01 - W 5th M

SHEET TITLE
SUBDIVISION
SURFACE IMPROVEMENTS
SAMPLE SHEET

FILE NO. 12345678C-103.dwg	ENG DWG NO.	
SHEET ID. C-103	SHEET NO. 005	
BY	DATE	PROFILE NO.

ISC: SHEET SIZE ANSI D 25 mm

THIS DRAWING SAMPLE IS INTENDED TO ILLUSTRATE THE NEW CAD STANDARDS AND ARE FOR REFERENCE PURPOSES ONLY. PLEASE CONFIRM WITH YOUR APPROPRIATE CITY OF CALGARY CONTACT FOR SPECIFIC CONTENT REQUIREMENTS.